

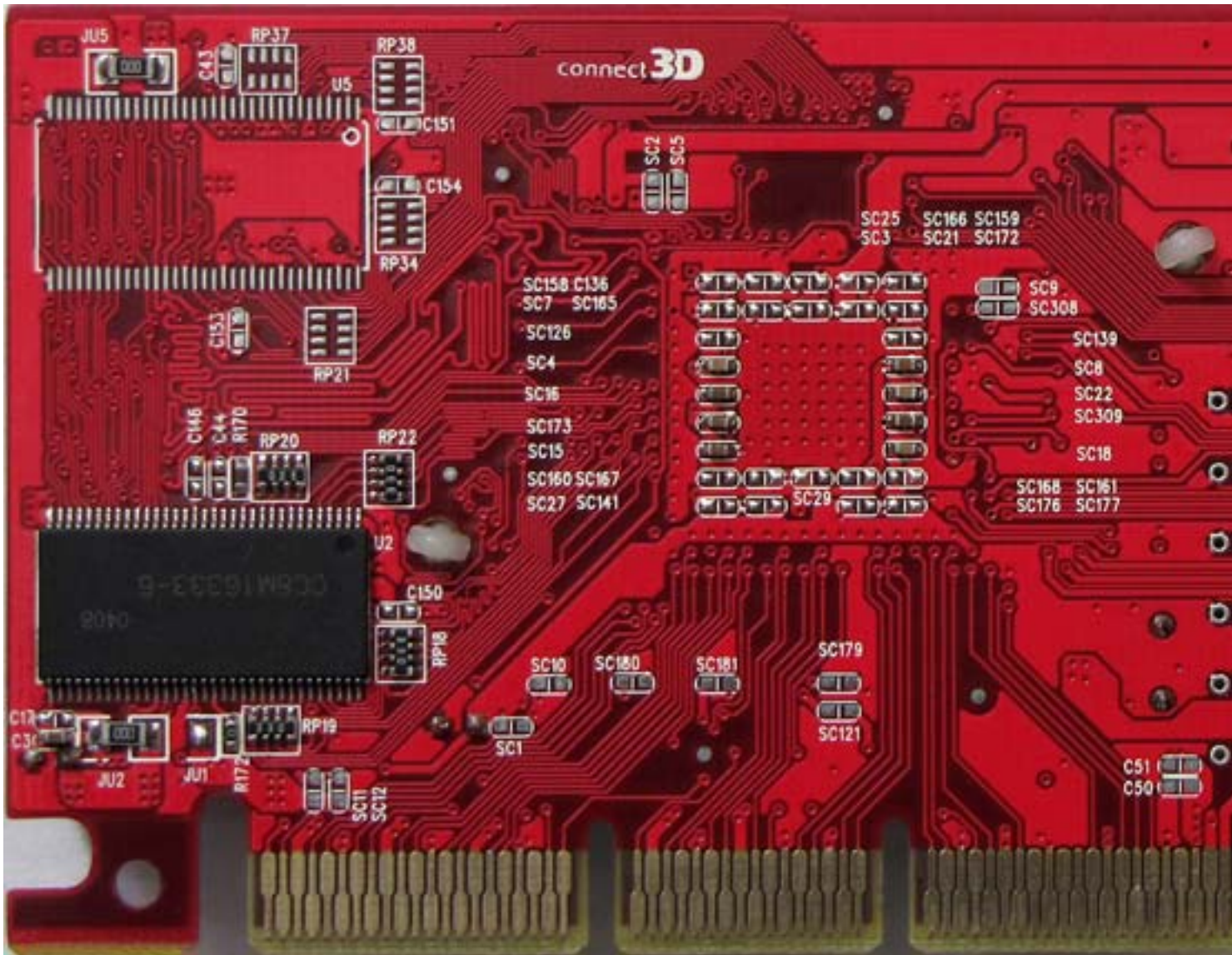


# ATI Radeon 7000

Written by Vlask

Saturday, 18 September 2010 19:13 - Last Updated Monday, 06 May 2013 22:53

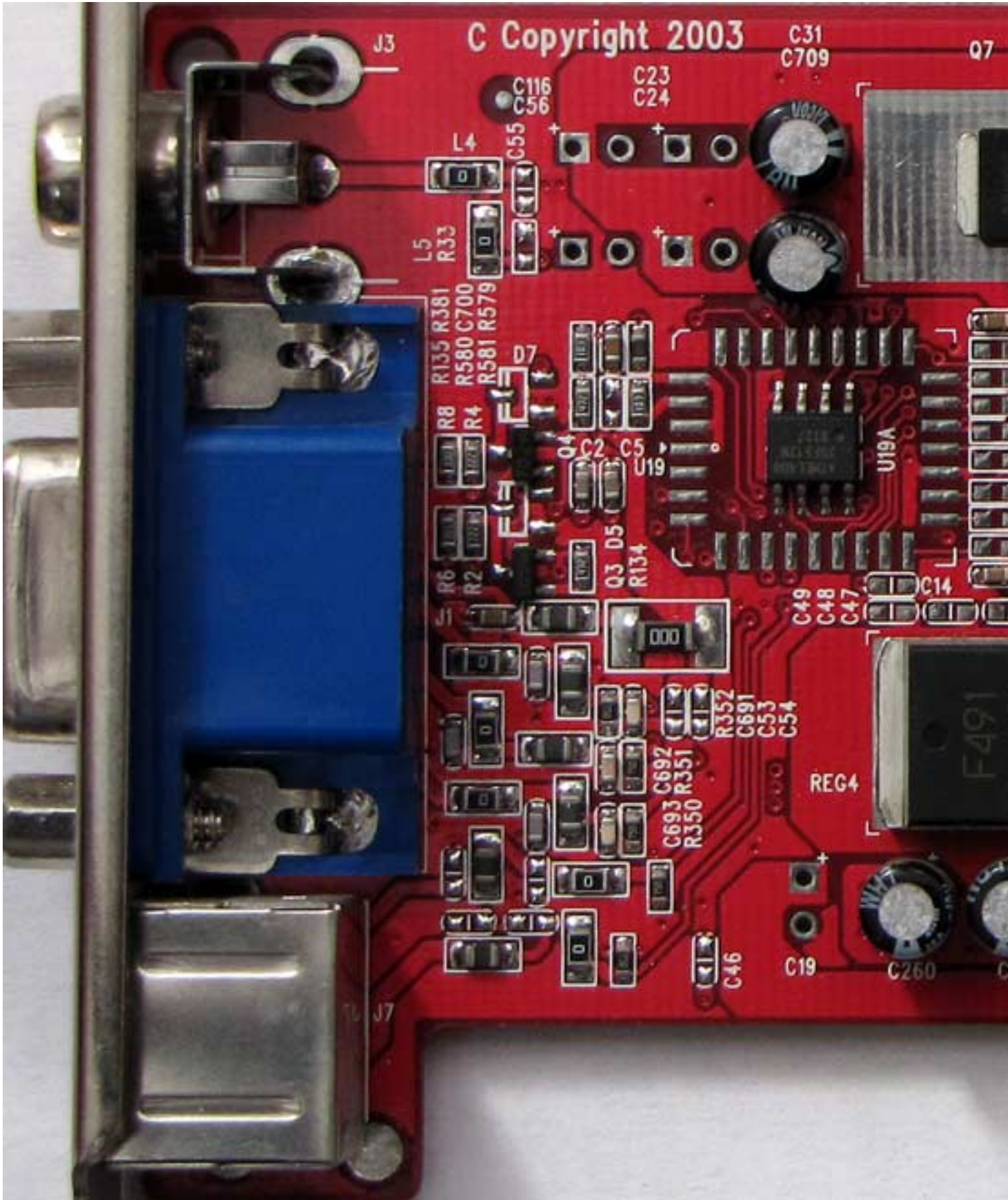
---



# ATI Radeon 7000

Written by Vlask

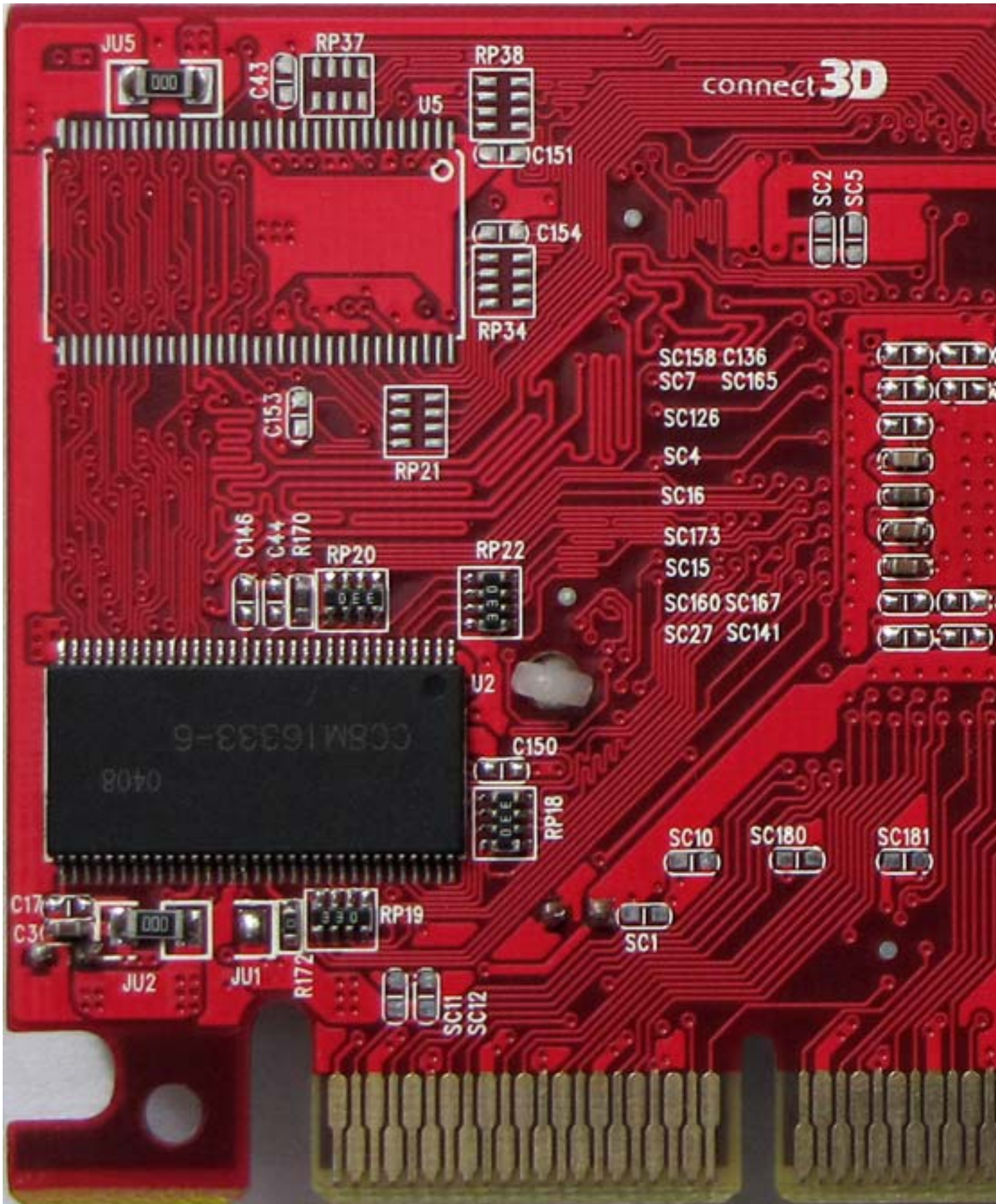
Saturday, 18 September 2010 19:13 - Last Updated Monday, 06 May 2013 22:53



# ATI Radeon 7000

Written by Vlask

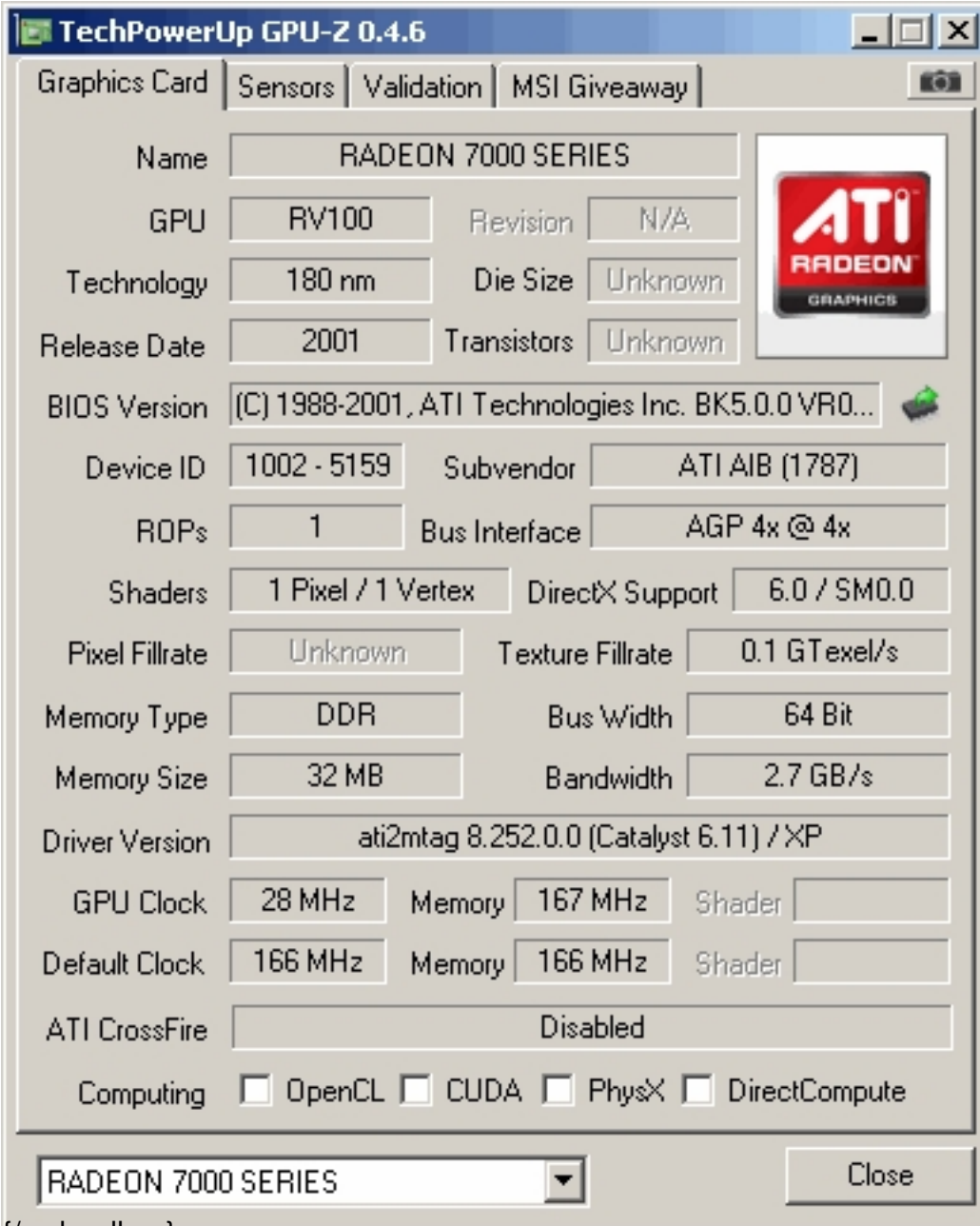
Saturday, 18 September 2010 19:13 - Last Updated Monday, 06 May 2013 22:53



## ATI Radeon 7000

Written by Vlask

Saturday, 18 September 2010 19:13 - Last Updated Monday, 06 May 2013 22:53



The screenshot shows the TechPowerUp GPU-Z 0.4.6 application window. The 'Graphics Card' tab is selected, displaying the following information:

Field	Value
Name	RADEON 7000 SERIES
GPU	RV100
Revision	N/A
Technology	180 nm
Die Size	Unknown
Release Date	2001
Transistors	Unknown
BIOS Version	(C) 1988-2001, ATI Technologies Inc. BK5.0.0 VR0...
Device ID	1002 - 5159
Subvendor	ATI AIB (1787)
ROPs	1
Bus Interface	AGP 4x @ 4x
Shaders	1 Pixel / 1 Vertex
DirectX Support	6.0 / SM0.0
Pixel Fillrate	Unknown
Texture Fillrate	0.1 GTexel/s
Memory Type	DDR
Bus Width	64 Bit
Memory Size	32 MB
Bandwidth	2.7 GB/s
Driver Version	ati2mtag 8.252.0.0 (Catalyst 6.11) / XP
GPU Clock	28 MHz
Memory Clock	167 MHz
Shader Clock	
Default GPU Clock	166 MHz
Default Memory Clock	166 MHz
Default Shader Clock	
ATI CrossFire	Disabled
Computing	<input type="checkbox"/> OpenCL <input type="checkbox"/> CUDA <input type="checkbox"/> PhysX <input type="checkbox"/> DirectCompute

At the bottom of the window, there is a dropdown menu showing 'RADEON 7000 SERIES' and a 'Close' button.

{/webgallery}