

Diamond Stealth SE

Written by Vlask

Saturday, 23 January 2010 13:31 - Last Updated Saturday, 07 April 2012 17:24



Core: S3 Trio32 ?MHz 32bit

Memory: 1MB ?MHz 32bit

Year: 1994 **Bus:** PCI

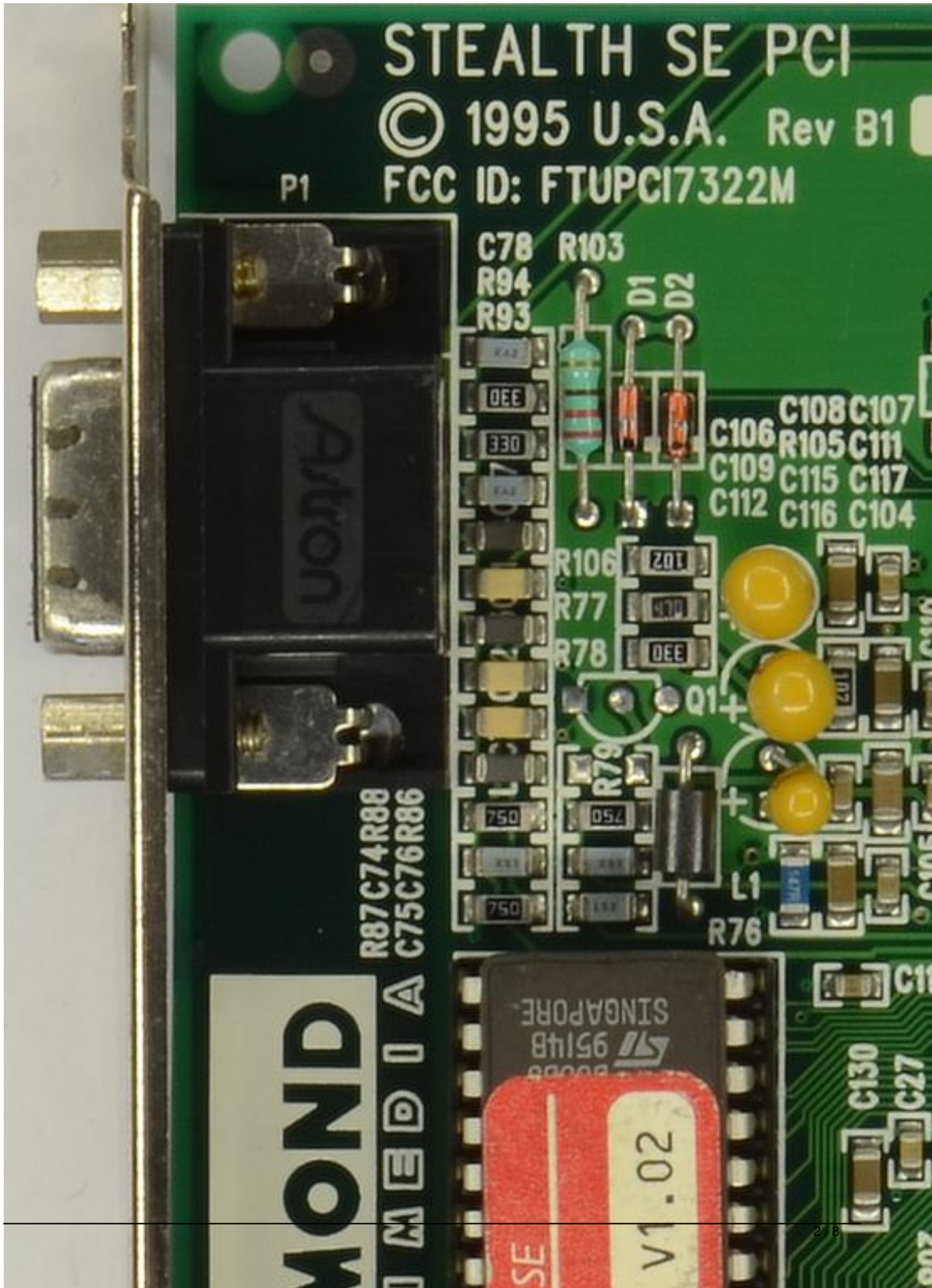
Made: Taiwan, Korea **Links:** none known

{webgallery}

Diamond Stealth SE

Written by Vlask

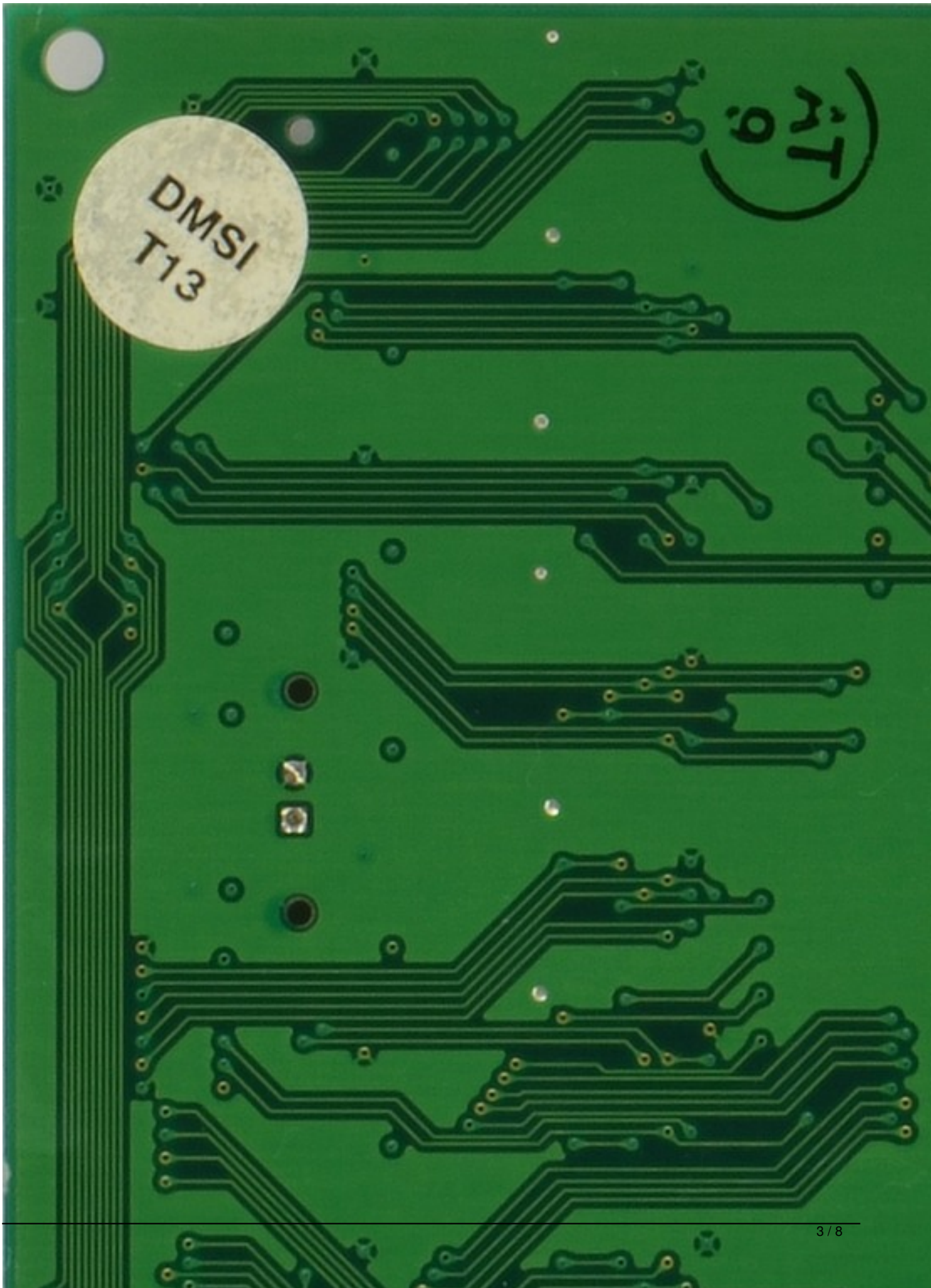
Saturday, 23 January 2010 13:31 - Last Updated Saturday, 07 April 2012 17:24



Diamond Stealth SE

Written by Vlask

Saturday, 23 January 2010 13:31 - Last Updated Saturday, 07 April 2012 17:24



Diamond Stealth SE

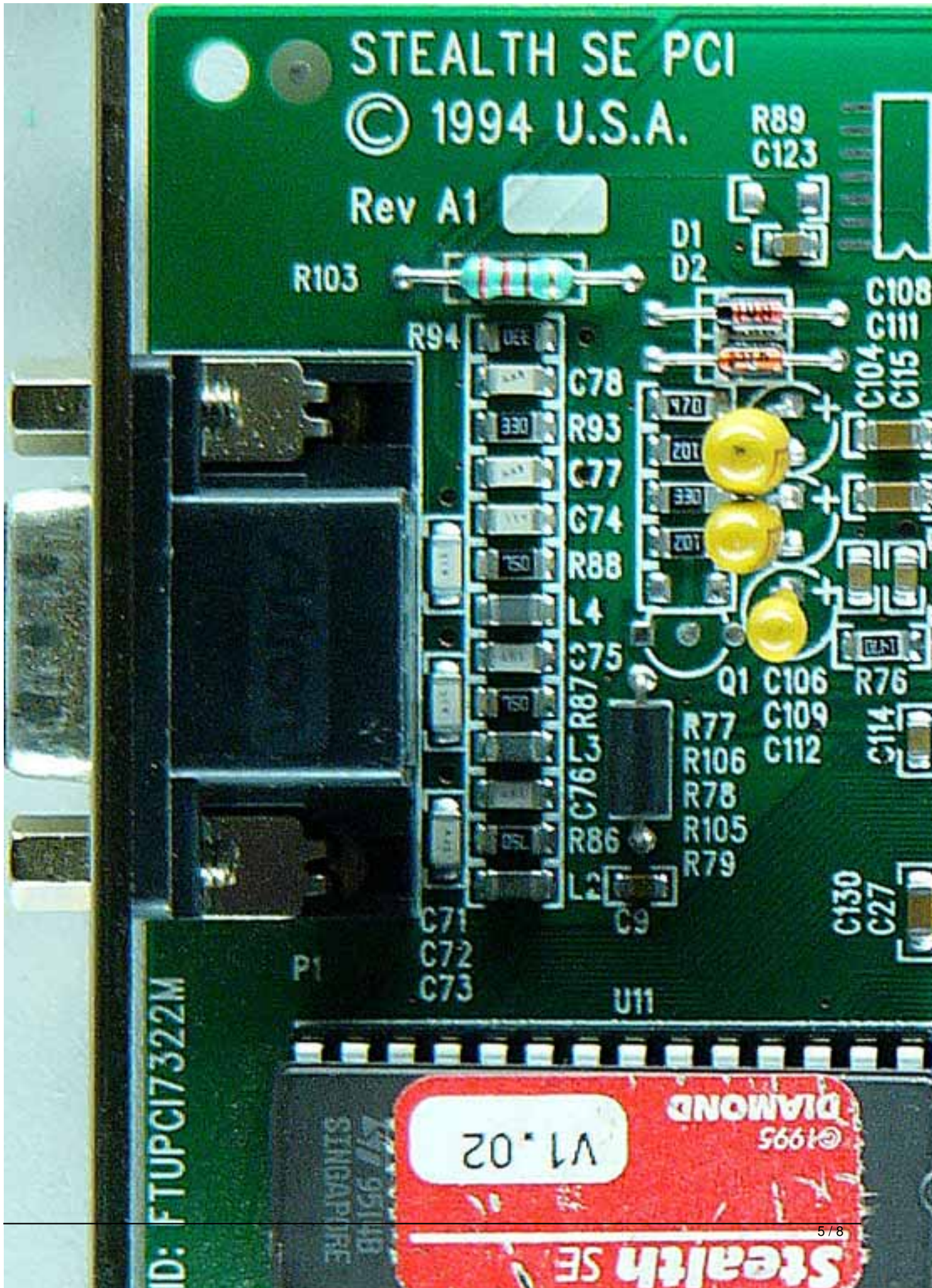
Written by Vlask

Saturday, 23 January 2010 13:31 - Last Updated Saturday, 07 April 2012 17:24

Diamond Stealth SE

Written by Vlask

Saturday, 23 January 2010 13:31 - Last Updated Saturday, 07 April 2012 17:24



Diamond Stealth SE

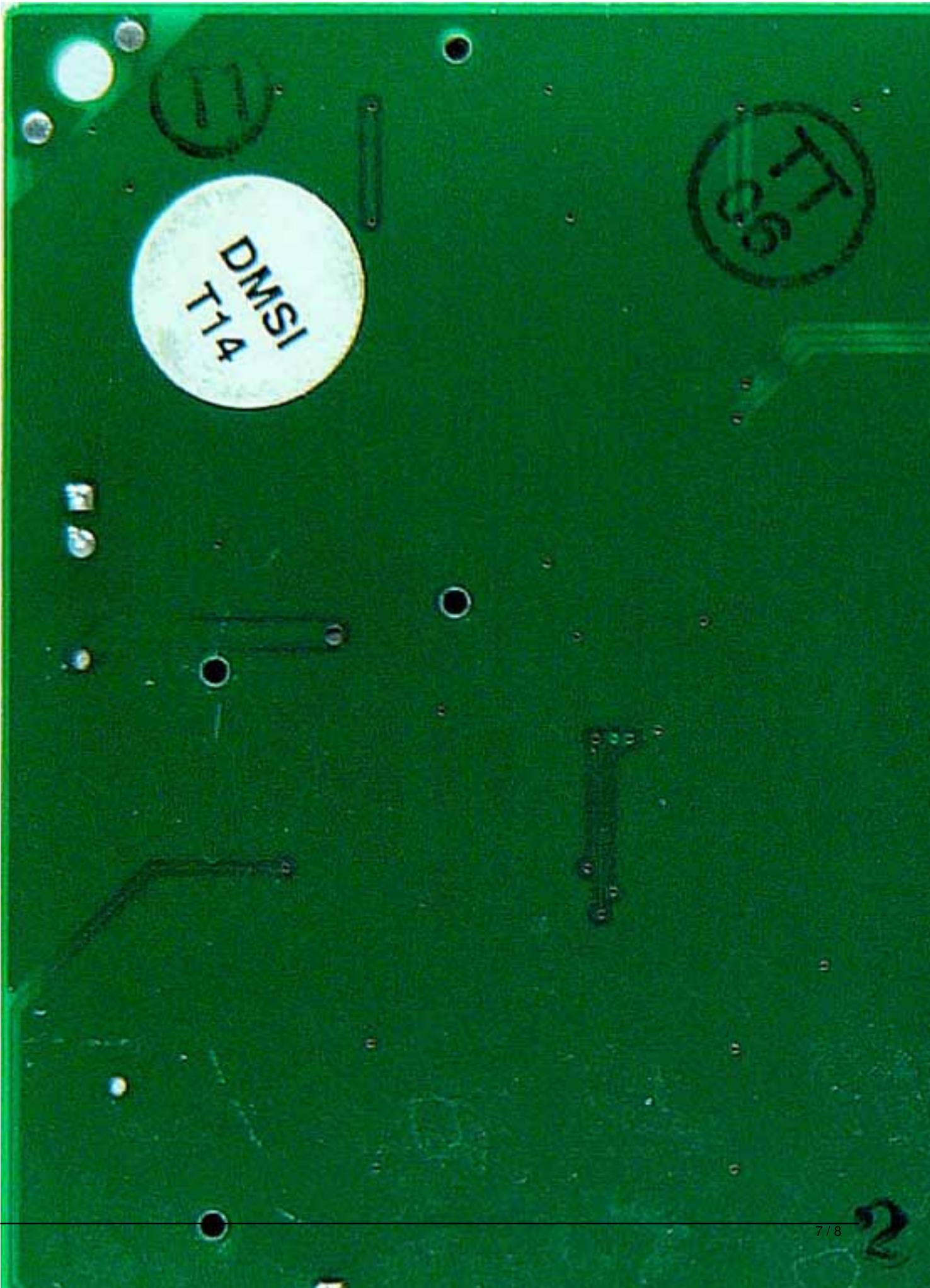
Written by Vlask

Saturday, 23 January 2010 13:31 - Last Updated Saturday, 07 April 2012 17:24

Diamond Stealth SE

Written by Vlask

Saturday, 23 January 2010 13:31 - Last Updated Saturday, 07 April 2012 17:24



Diamond Stealth SE

Written by Vlask

Saturday, 23 January 2010 13:31 - Last Updated Saturday, 07 April 2012 17:24

{/webgallery}