

ATi Radeon HD5970

Written by Zaatharen
Saturday, 17 May 2014 00:30



Core: 2x Hemlock XT 725MHz 256bit

Memory: 2GB GDDR5 4000MHz 256bit (1GB per GPU) **Year:** 2009 **Bus:** PCI-E 16x 2.1 **Litography:**

40nm

Transistors:

2154 milion per GPU

ROPs: 64 **TMUs:** 160 **DirectX:** 11 **Unified shaders:** 3200 (v 5.1) **Memory bandwidth:** 256 GB/s

Special:

CrossFire

Pixel fillrate:

47040 MPixel/s

Texel Fillrate:

117600 MTexel/s

ATI PowerPlay (BIOS)

State #1 GPU: 735 MHz, Memory: 1010 MHz (Boot)

State #2 GPU: 735 MHz, Memory: 1010 MHz

State #3 GPU: 400 MHz, Memory: 900 MHz (UVD)

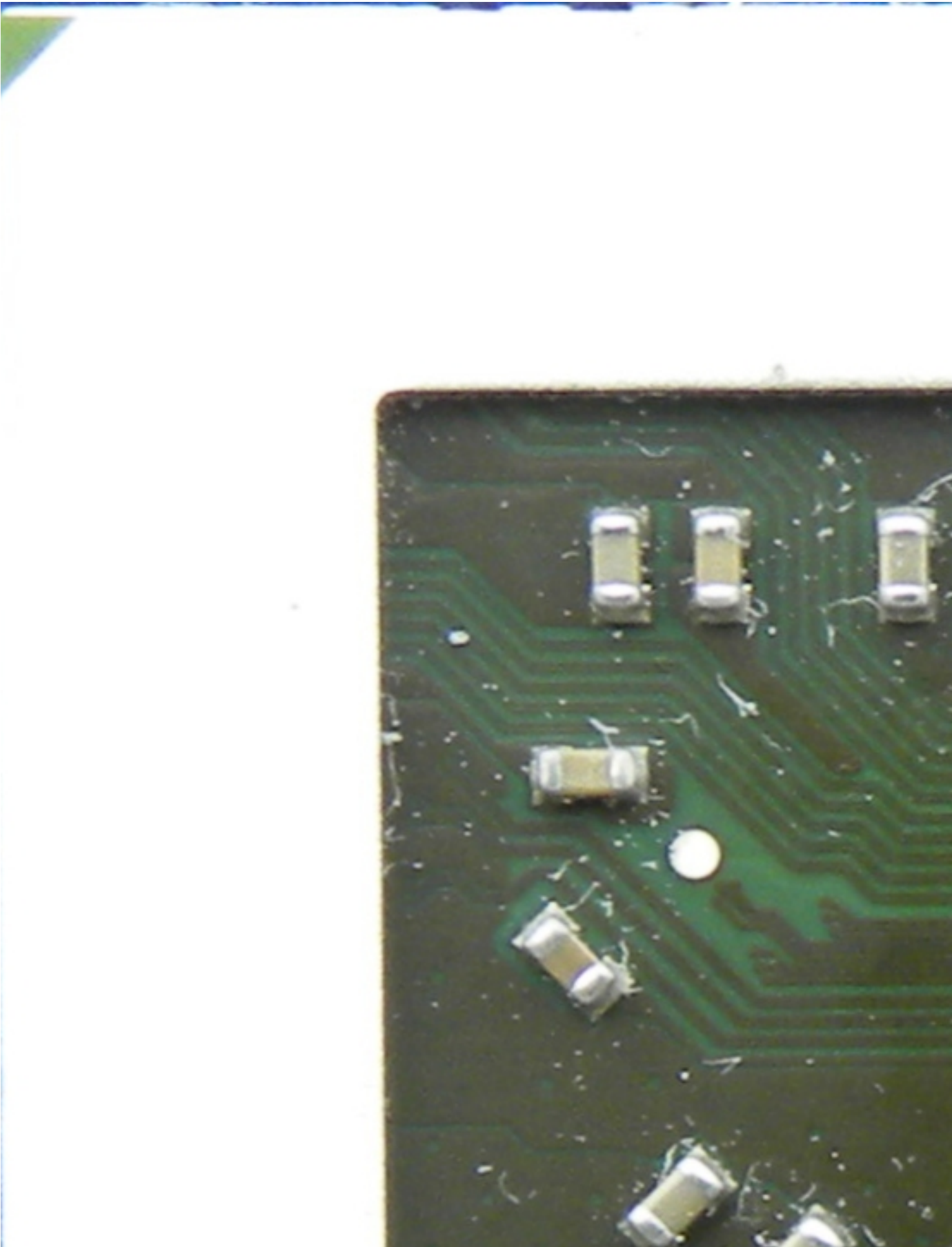
State #4 GPU: 735 MHz, Memory: 1010 MHz

State #5 GPU: 157 MHz, Memory: 300 MHz

{webgallery}

ATi Radeon HD5970

Written by Zaatharen
Saturday, 17 May 2014 00:30

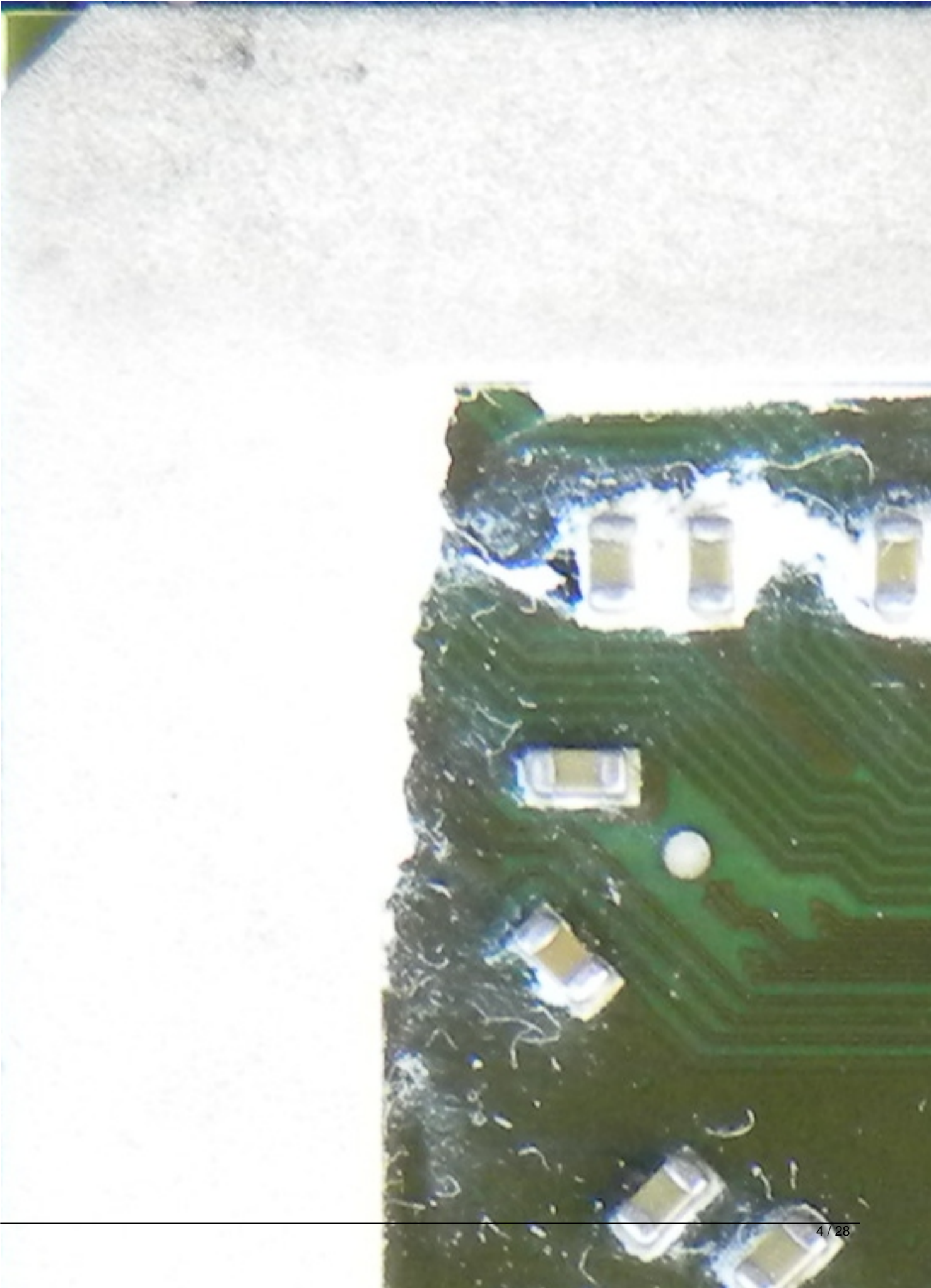


ATi Radeon HD5970

Written by Zaatharen
Saturday, 17 May 2014 00:30

ATi Radeon HD5970

Written by Zaatharen
Saturday, 17 May 2014 00:30



ATi Radeon HD5970

Written by Zaatharen
Saturday, 17 May 2014 00:30

ATI Radeon HD5970

Written by Zaatharen
Saturday, 17 May 2014 00:30



ATi Radeon HD5970

Written by Zaatharen
Saturday, 17 May 2014 00:30

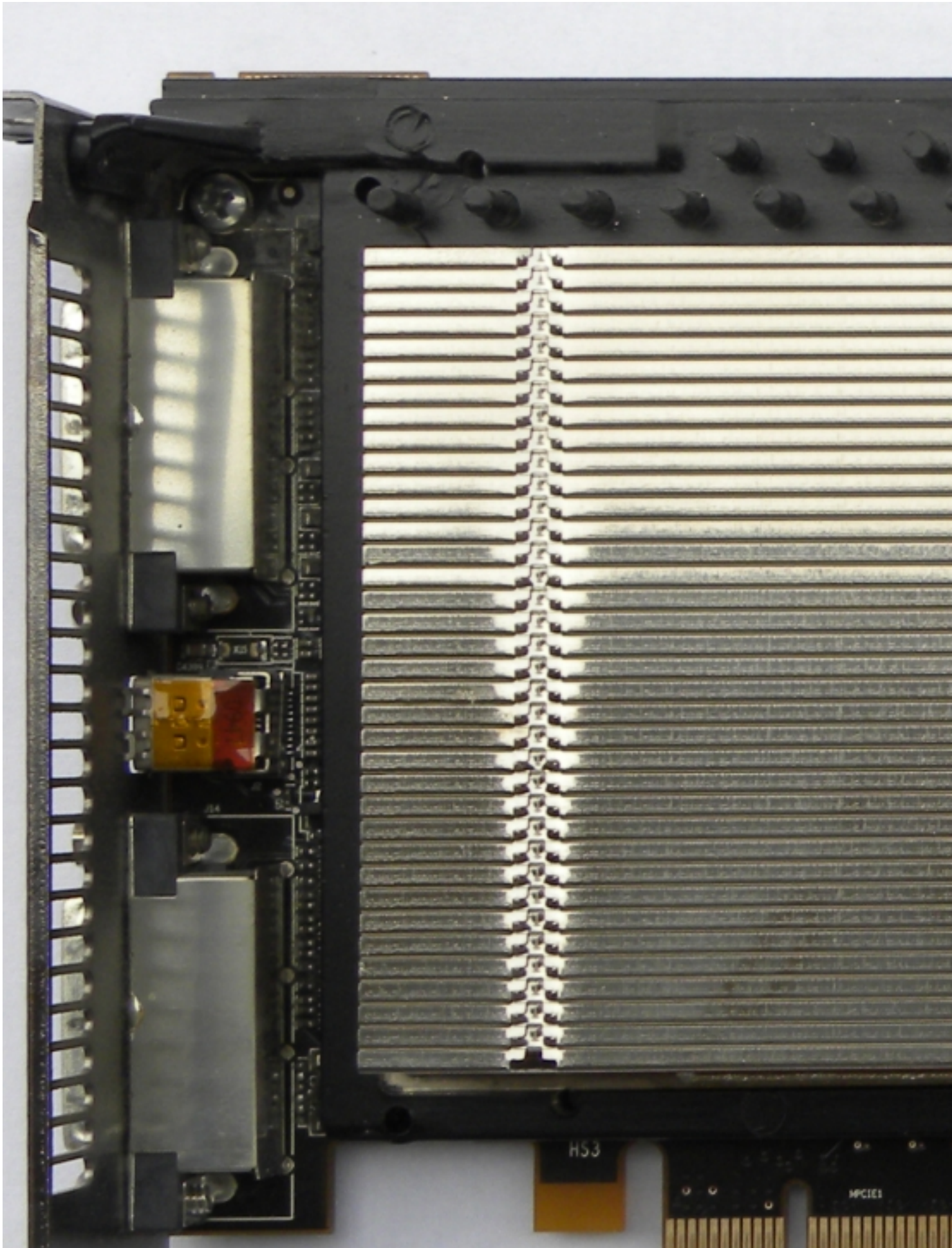


ATi Radeon HD5970

Written by Zaatharen
Saturday, 17 May 2014 00:30

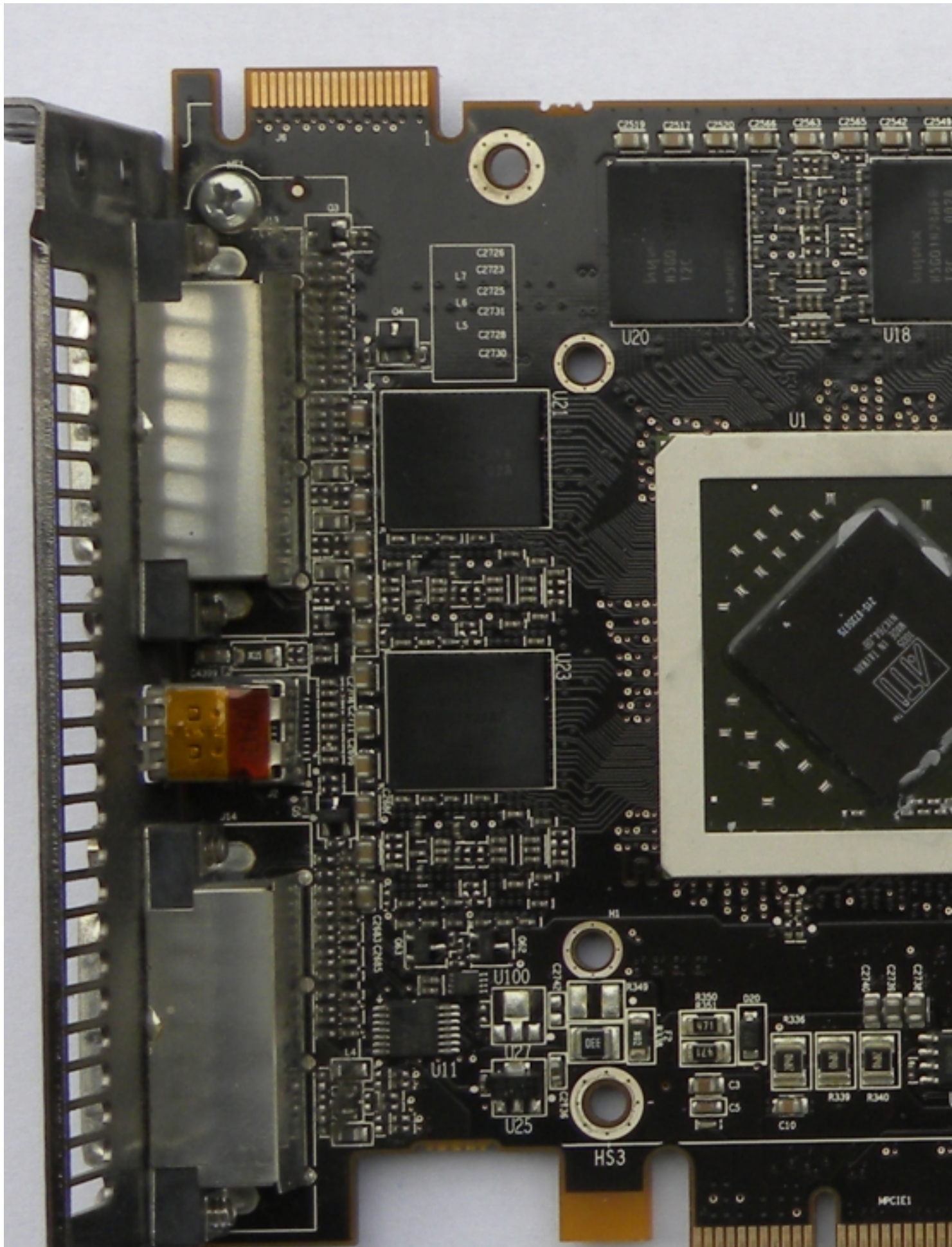
ATI Radeon HD5970

Written by Zaatharen
Saturday, 17 May 2014 00:30



ATI Radeon HD5970

Written by Zaatharen
Saturday, 17 May 2014 00:30



ATi Radeon HD5970

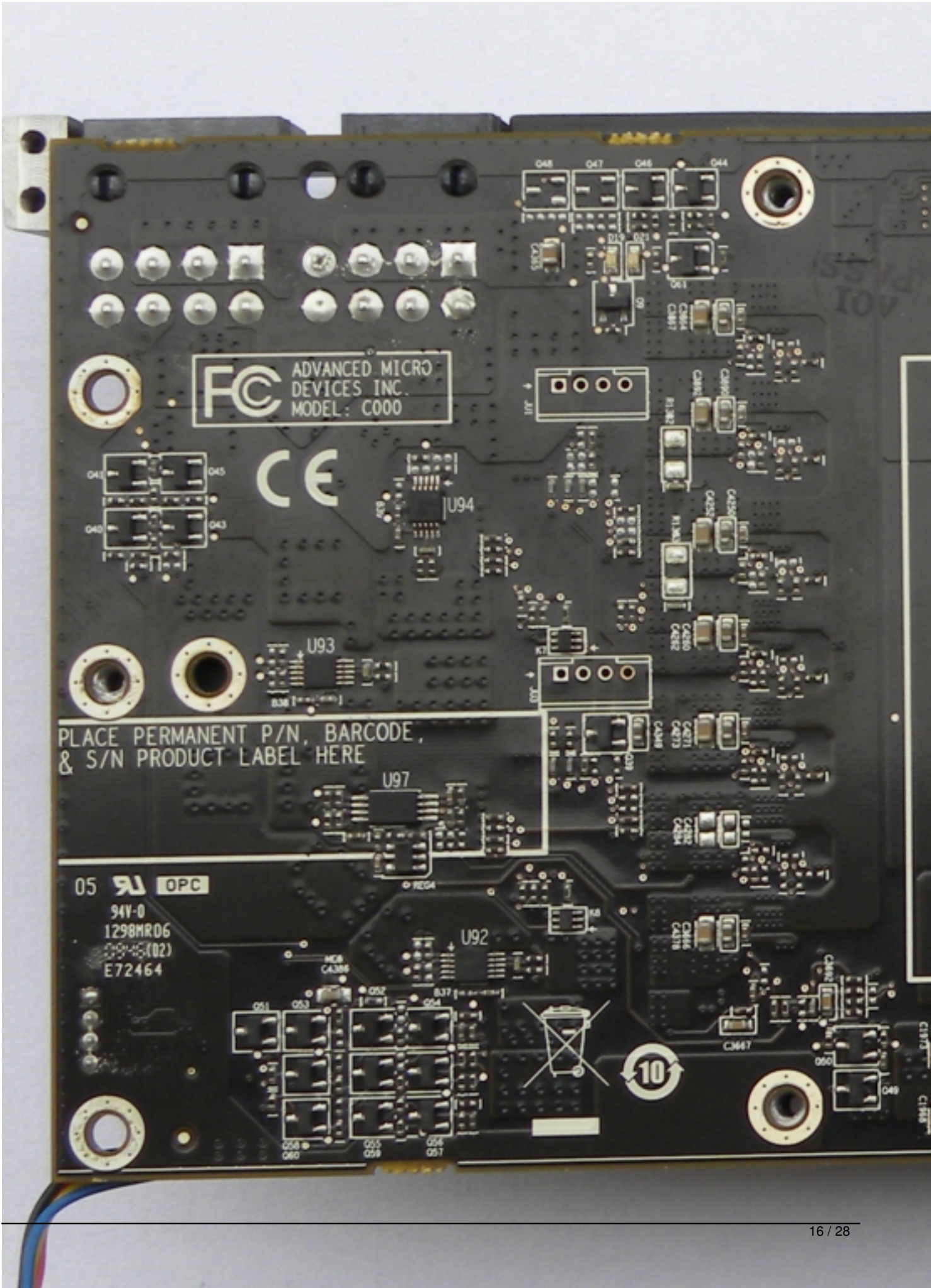
Written by Zaatharen

Saturday, 17 May 2014 00:30



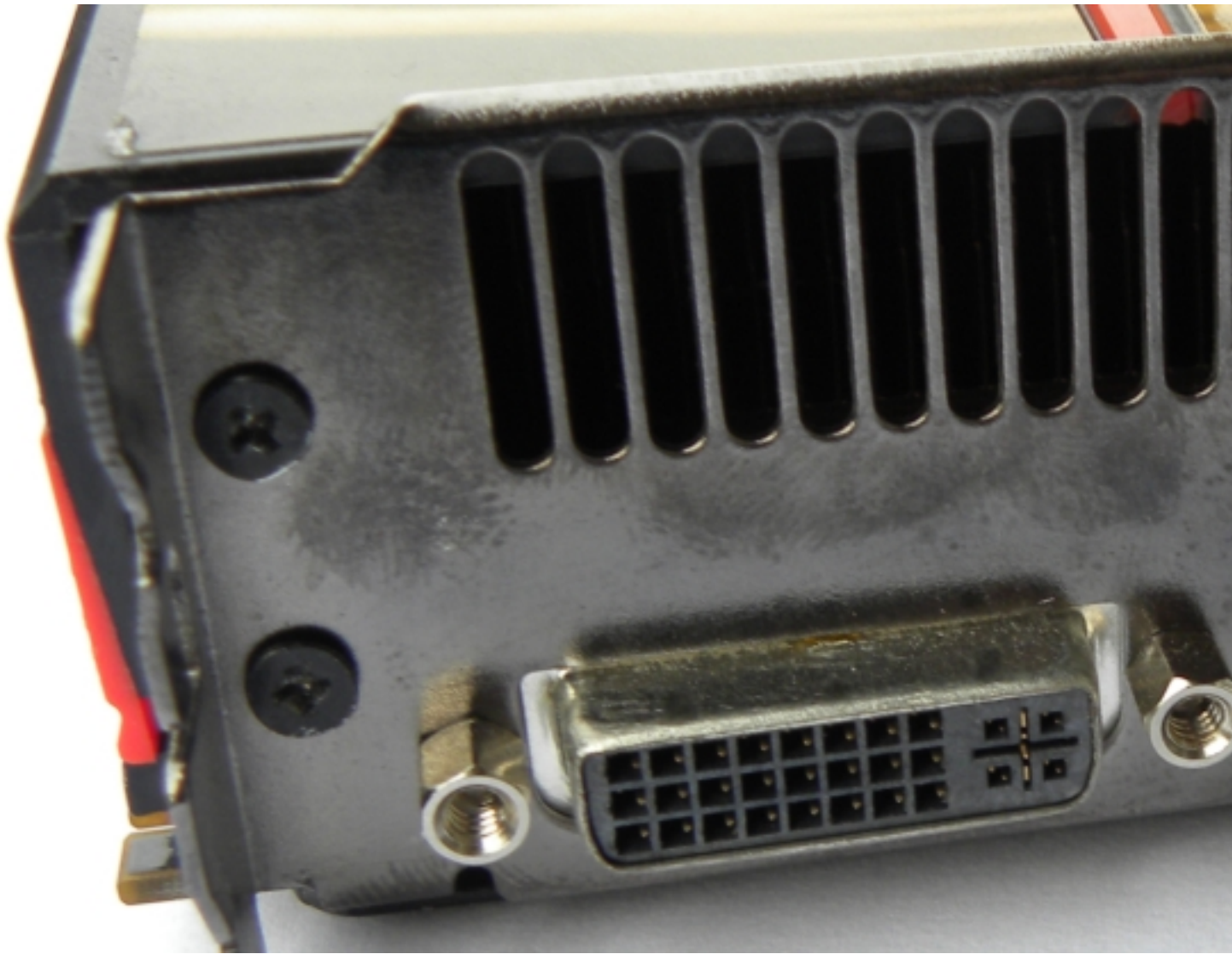
ATI Radeon HD5970

Written by Zaatharen
Saturday, 17 May 2014 00:30



ATi Radeon HD5970

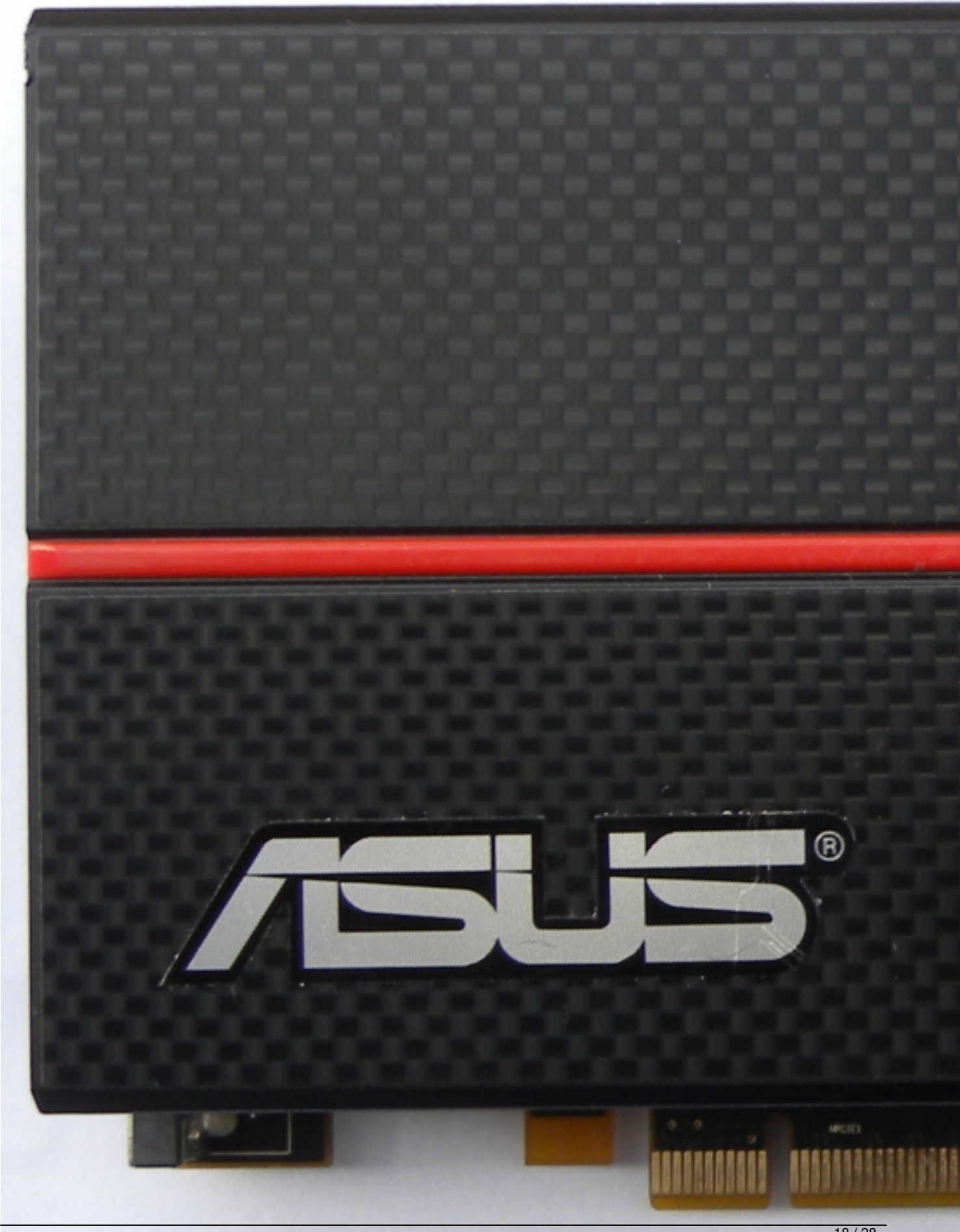
Written by Zaatharen
Saturday, 17 May 2014 00:30



ATi Radeon HD5970

Written by Zaatharen

Saturday, 17 May 2014 00:30



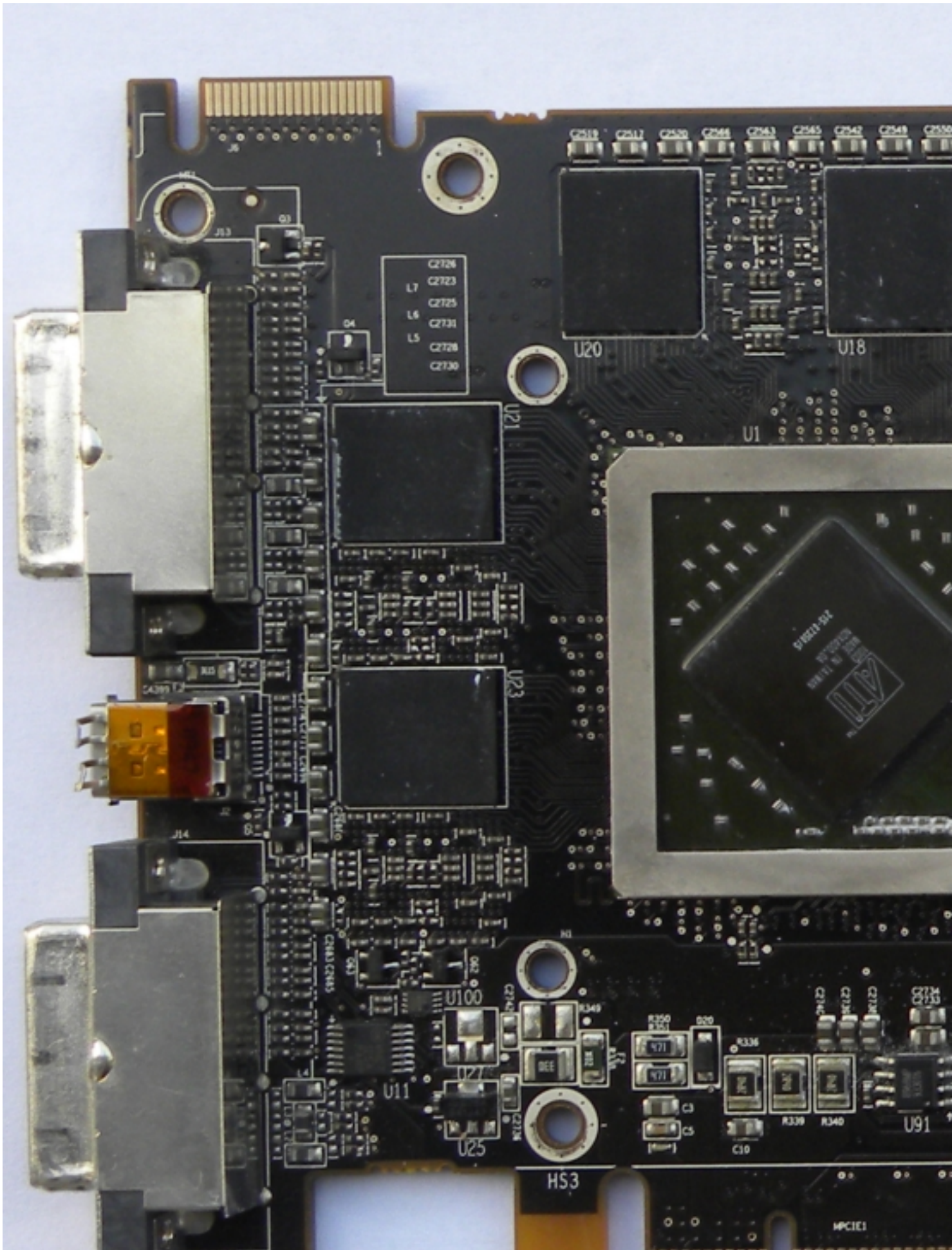
ATi Radeon HD5970

Written by Zaatharen
Saturday, 17 May 2014 00:30



ATI Radeon HD5970

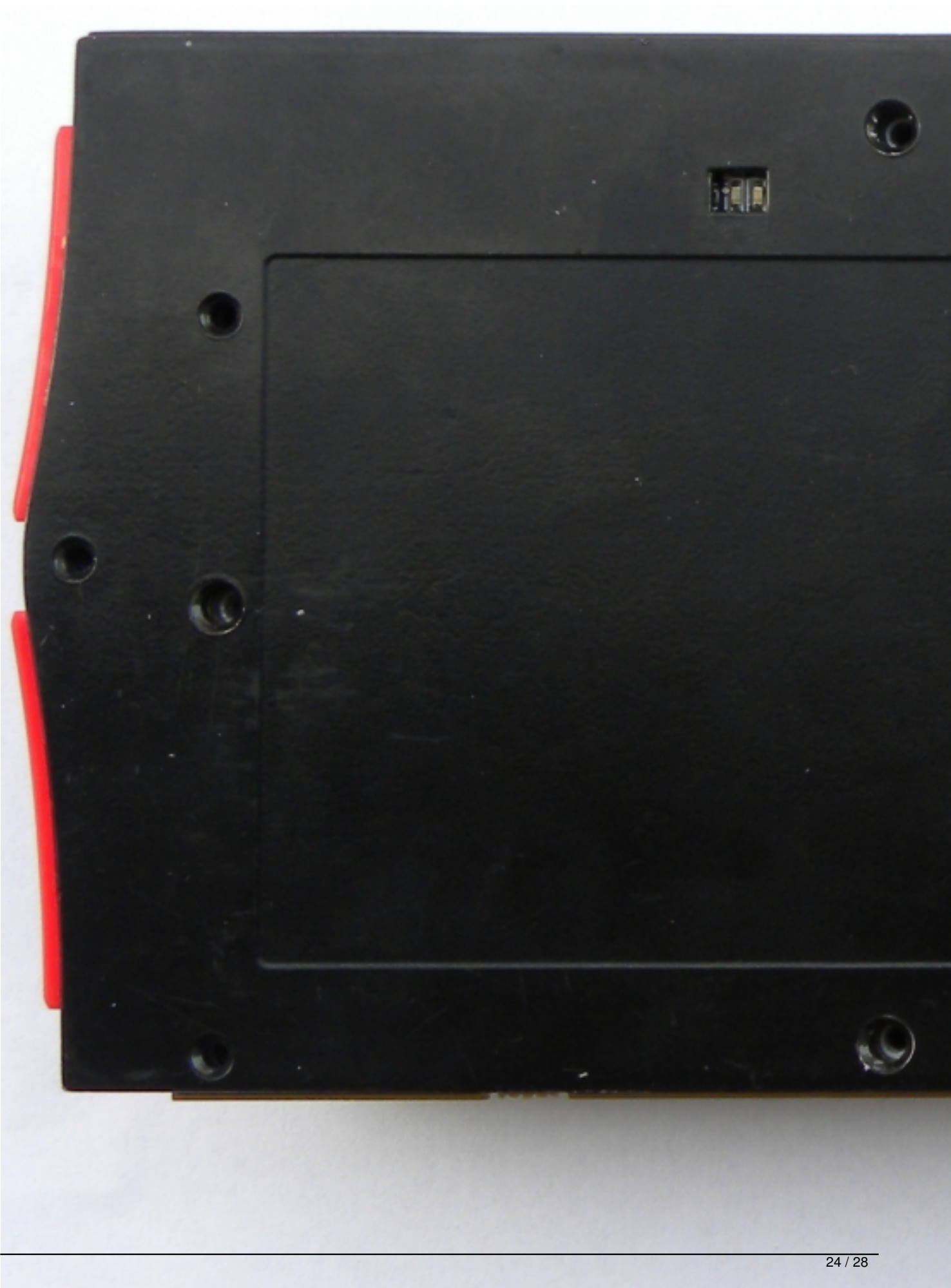
Written by Zaatharen
Saturday, 17 May 2014 00:30



ATi Radeon HD5970

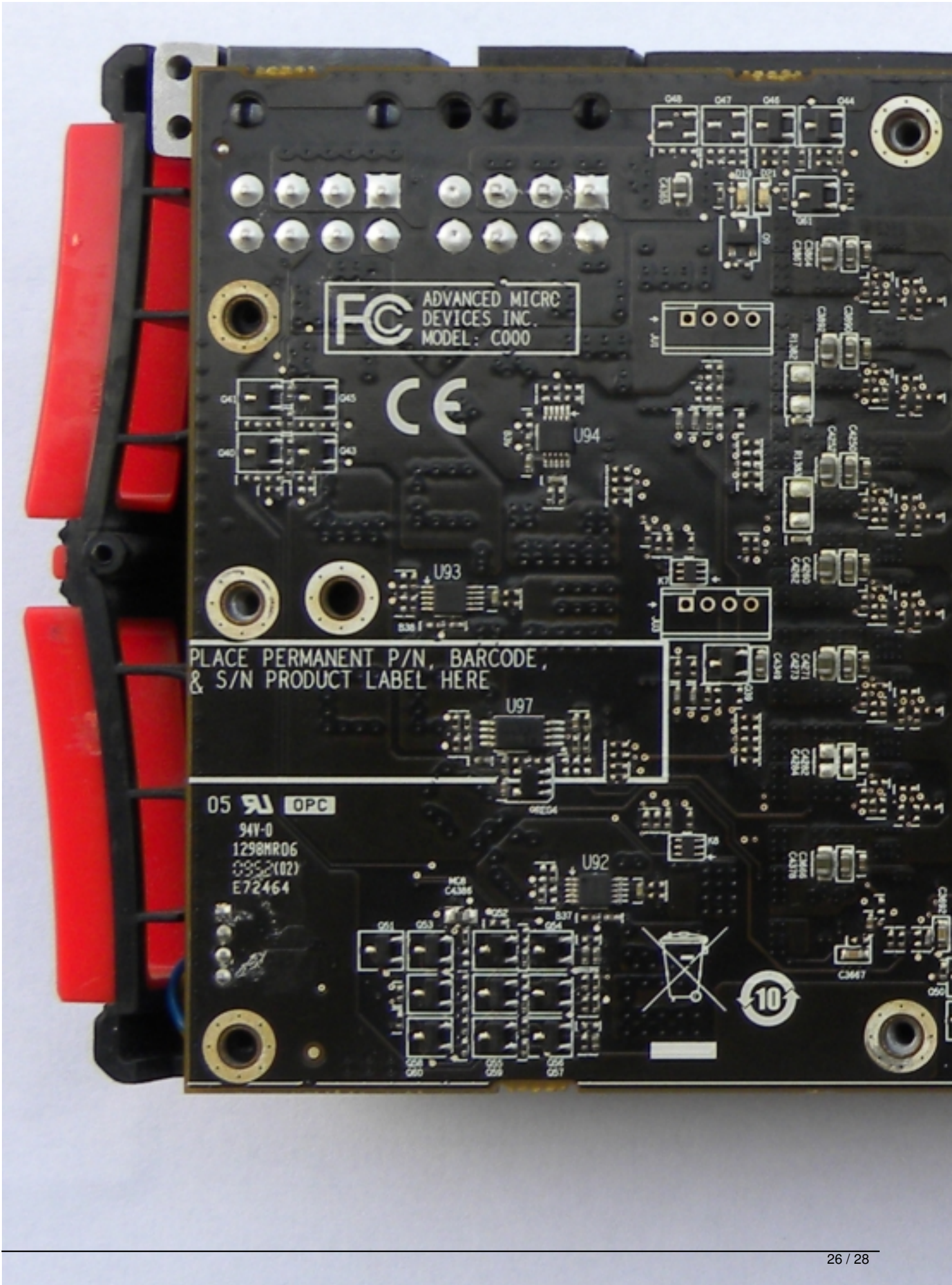
Written by Zaatharen

Saturday, 17 May 2014 00:30



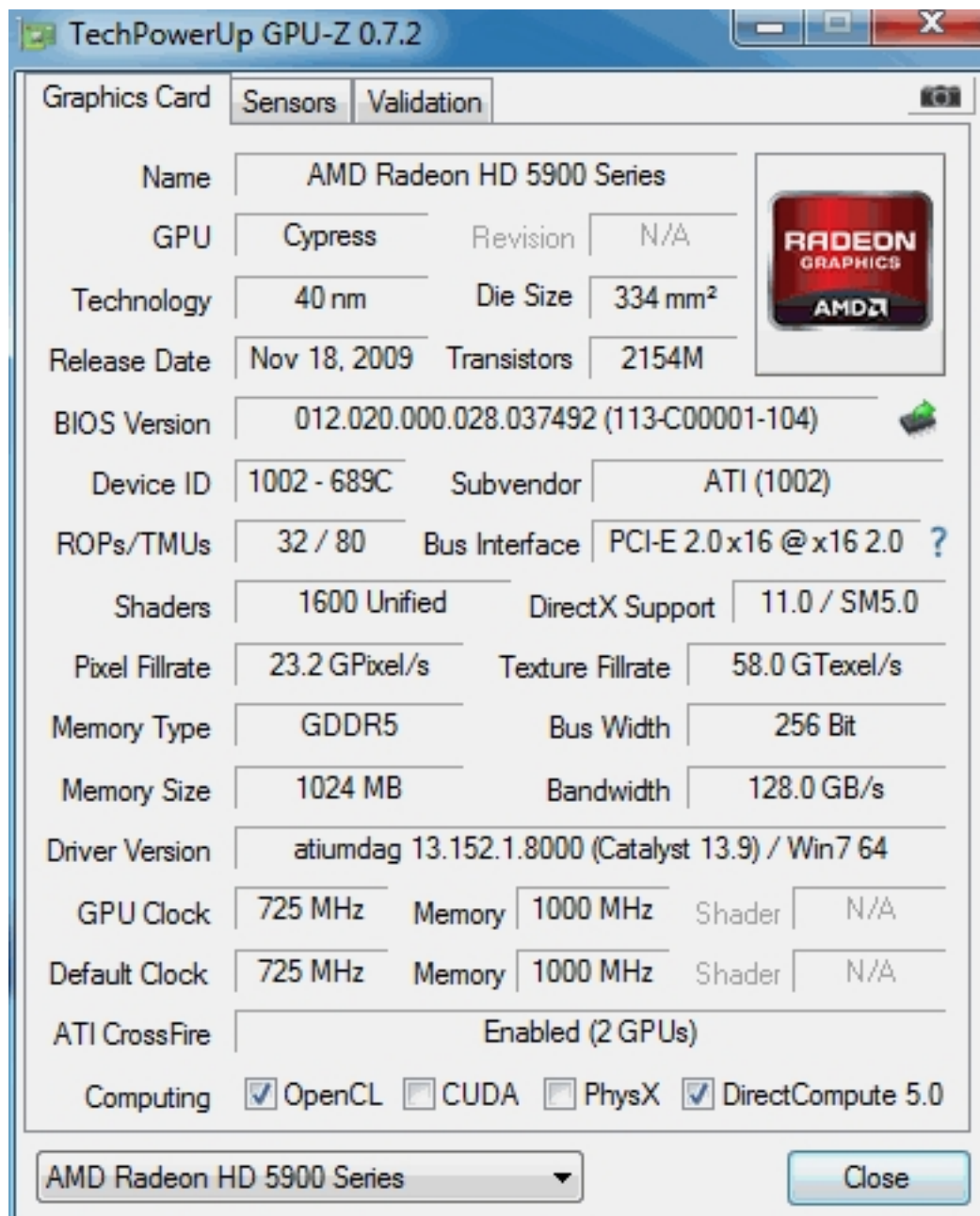
ATI Radeon HD5970

Written by Zaatharen
Saturday, 17 May 2014 00:30



ATi Radeon HD5970

Written by Zaatharen
Saturday, 17 May 2014 00:30



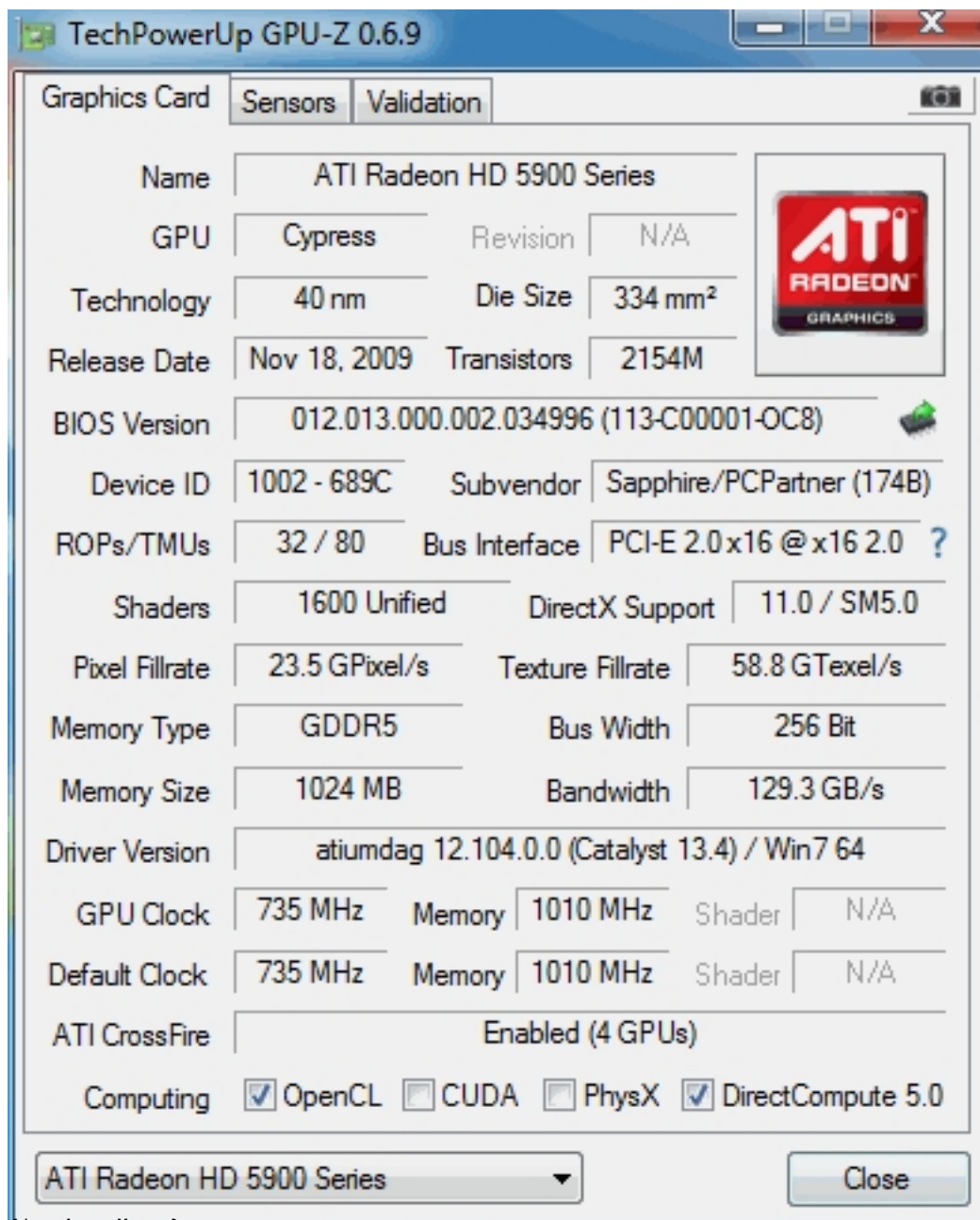
The screenshot displays the TechPowerUp GPU-Z 0.7.2 application window. The 'Graphics Card' tab is active, showing detailed specifications for an AMD Radeon HD 5900 Series GPU. The interface includes a top navigation bar with 'Sensors' and 'Validation' tabs, and a 'Close' button at the bottom right. The specifications are organized into a grid-like layout with labels and values.

Graphics Card		Sensors	Validation
Name	AMD Radeon HD 5900 Series		
GPU	Cypress	Revision	N/A
Technology	40 nm	Die Size	334 mm ²
Release Date	Nov 18, 2009	Transistors	2154M
BIOS Version	012.020.000.028.037492 (113-C00001-104)		
Device ID	1002 - 689C	Subvendor	ATI (1002)
ROPs/TMUs	32 / 80	Bus Interface	PCI-E 2.0x16 @ x16 2.0 ?
Shaders	1600 Unified	DirectX Support	11.0 / SM5.0
Pixel Fillrate	23.2 GPixel/s	Texture Fillrate	58.0 GTexel/s
Memory Type	GDDR5	Bus Width	256 Bit
Memory Size	1024 MB	Bandwidth	128.0 GB/s
Driver Version	atiumdag 13.152.1.8000 (Catalyst 13.9) / Win7 64		
GPU Clock	725 MHz	Memory	1000 MHz
Default Clock	725 MHz	Memory	1000 MHz
ATI CrossFire	Enabled (2 GPUs)		
Computing	<input checked="" type="checkbox"/> OpenCL <input type="checkbox"/> CUDA <input type="checkbox"/> PhysX <input checked="" type="checkbox"/> DirectCompute 5.0		

AMD Radeon HD 5900 Series Close

ATi Radeon HD5970

Written by Zaatharen
Saturday, 17 May 2014 00:30



The screenshot displays the TechPowerUp GPU-Z 0.6.9 application window. The main content area is titled 'Graphics Card' and contains a 'Sensors' tab and a 'Validation' tab. The GPU information is as follows:

Name	ATI Radeon HD 5900 Series				
GPU	Cypress	Revision	N/A		
Technology	40 nm	Die Size	334 mm ²		
Release Date	Nov 18, 2009	Transistors	2154M		
BIOS Version	012.013.000.002.034996 (113-C00001-OC8)				
Device ID	1002 - 689C	Subvendor	Sapphire/PCPartner (174B)		
ROPs/TMUs	32 / 80	Bus Interface	PCI-E 2.0x16 @ x16 2.0 ?		
Shaders	1600 Unified	DirectX Support	11.0 / SM5.0		
Pixel Fillrate	23.5 GPixel/s	Texture Fillrate	58.8 GTexel/s		
Memory Type	GDDR5	Bus Width	256 Bit		
Memory Size	1024 MB	Bandwidth	129.3 GB/s		
Driver Version	atiumdag 12.104.0.0 (Catalyst 13.4) / Win7 64				
GPU Clock	735 MHz	Memory	1010 MHz	Shader	N/A
Default Clock	735 MHz	Memory	1010 MHz	Shader	N/A
ATI CrossFire	Enabled (4 GPUs)				
Computing	<input checked="" type="checkbox"/> OpenCL	<input type="checkbox"/> CUDA	<input type="checkbox"/> PhysX	<input checked="" type="checkbox"/> DirectCompute 5.0	

At the bottom of the window, there is a dropdown menu showing 'ATI Radeon HD 5900 Series' and a 'Close' button.

{/webgallery}