

ATI Rage 128 Pro

Written by Vlask

Sunday, 27 September 2009 11:30



Core: ATI Rage 128 Pro 120MHz 128bit

Memory: 32MB SDR 120MHz 64bit

Year: 1999 **Bus:** AGP 4x

Made: 250nm **Links:** [Press](#) [AiW](#) [AiW review](#) [Tom's Hardware](#) [Opengl](#) [Register guide](#) **Pri**
ce:

\$99, AiW-\$279

Bios: [Ati](#) [AiW](#)

Variants: All-in-Wonder 128 PRO - 32MB SDR 140MHz 64bit, core 118MHz

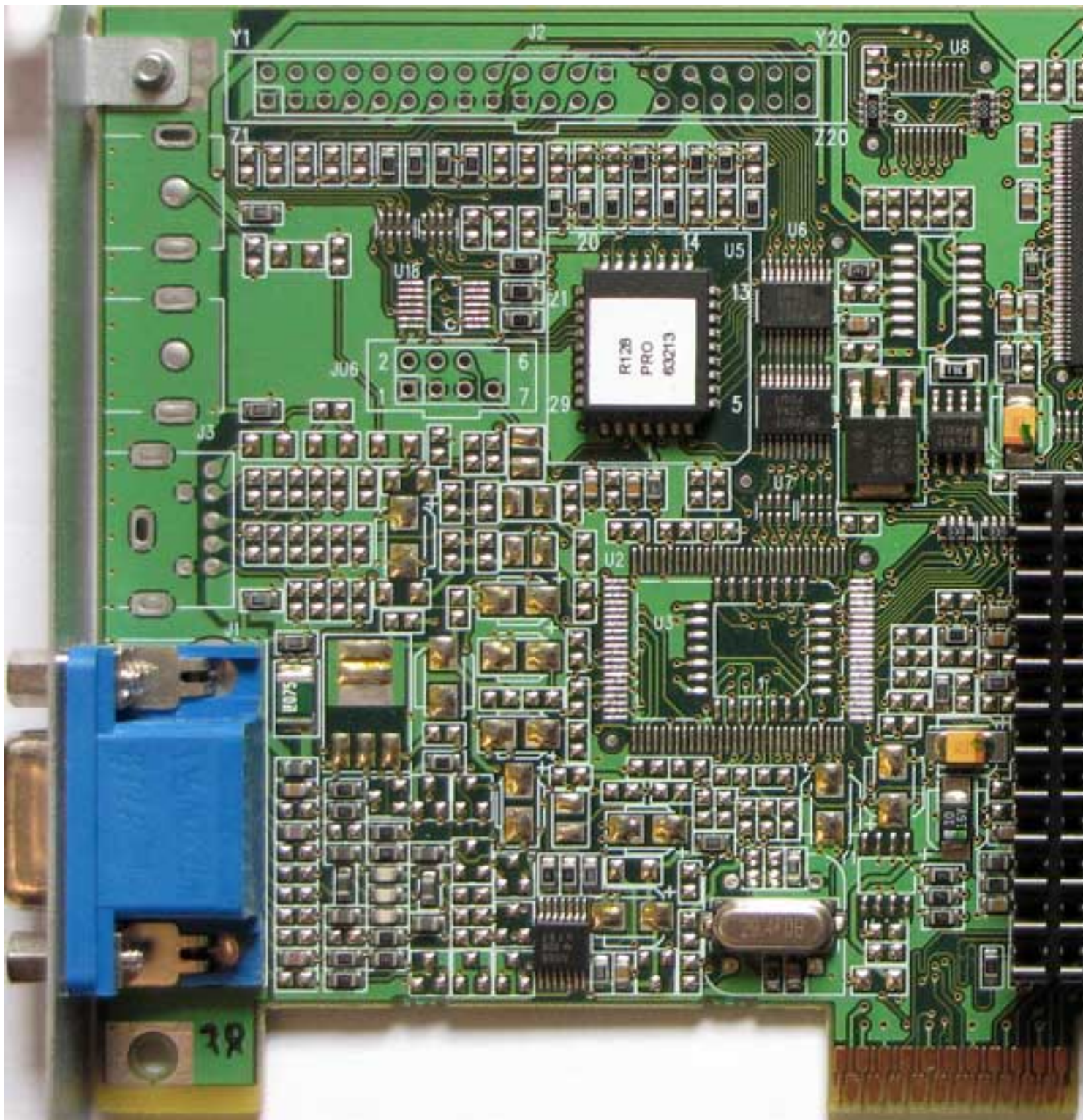
ATI Rage 128 Pro GL - 16MB SDR 110MHz, core 110MHz

ATI Rage 128P 16M - 16MB SDR 130MHz, core 130MHz

{webgallery}

ATI Rage 128 Pro

Written by Vlask
Sunday, 27 September 2009 11:30



ATI Rage 128 Pro

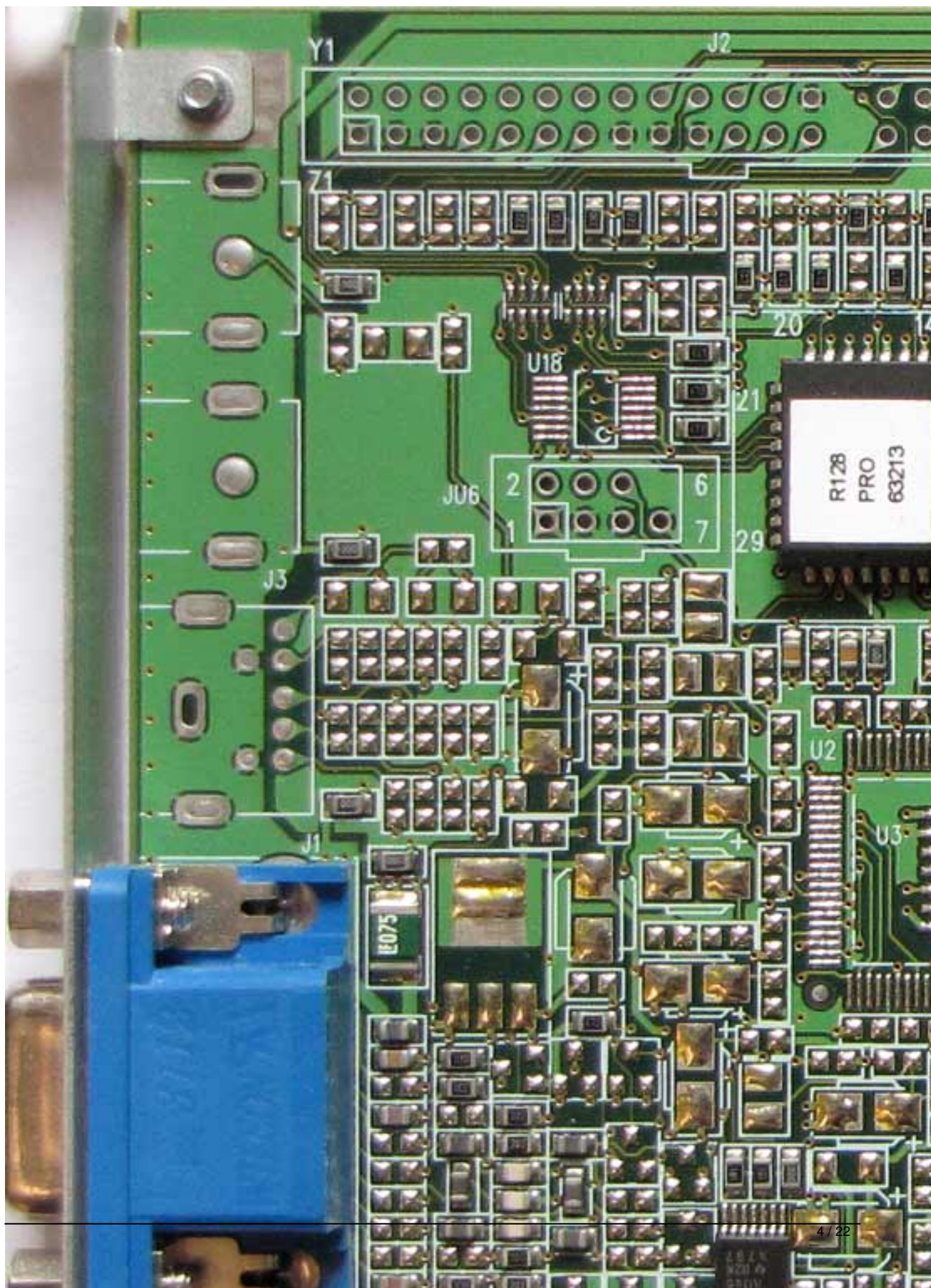
Written by Vlask

Sunday, 27 September 2009 11:30



ATI Rage 128 Pro

Written by Vlask
Sunday, 27 September 2009 11:30



ATI Rage 128 Pro

Written by Vlask
Sunday, 27 September 2009 11:30




ATI Rage 128 Pro

Written by Vlask

Sunday, 27 September 2009 11:30

TechPowerUp GPU-Z 0.3.4

Graphics Card | Sensors | Validation

Name	Rage Fury Pro/Xpert 2000 Pro			
GPU	Rage128	Revision	N/A	
Technology	250 nm	Die Size	Unknown	
Release Date	1998	Transistors	Unknown	
BIOS Version	(C) 1988-99, ATI Technologies Inc. BK3.0.1 VR001....			
Device ID	1002 - 5046	Subvendor	ATI (1002)	
ROPs	2	Bus Interface	AGP 4x @ 4x	
Shaders	0 Pixel / 0 Vertex		DirectX Support	6.0 / SM0.0
Pixel Fillrate	Unknown		Texture Fillrate	Unknown
Memory Type	SDR		Bus Width	64 Bit
Memory Size	32 MB		Bandwidth	Unknown
Driver Version	ati2mtag 6.14.10.6614 / XP			
GPU Clock	0 MHz	Memory	0 MHz	Shader
Default Clock	120 MHz	Memory	120 MHz	Shader
ATI CrossFire	Disabled			

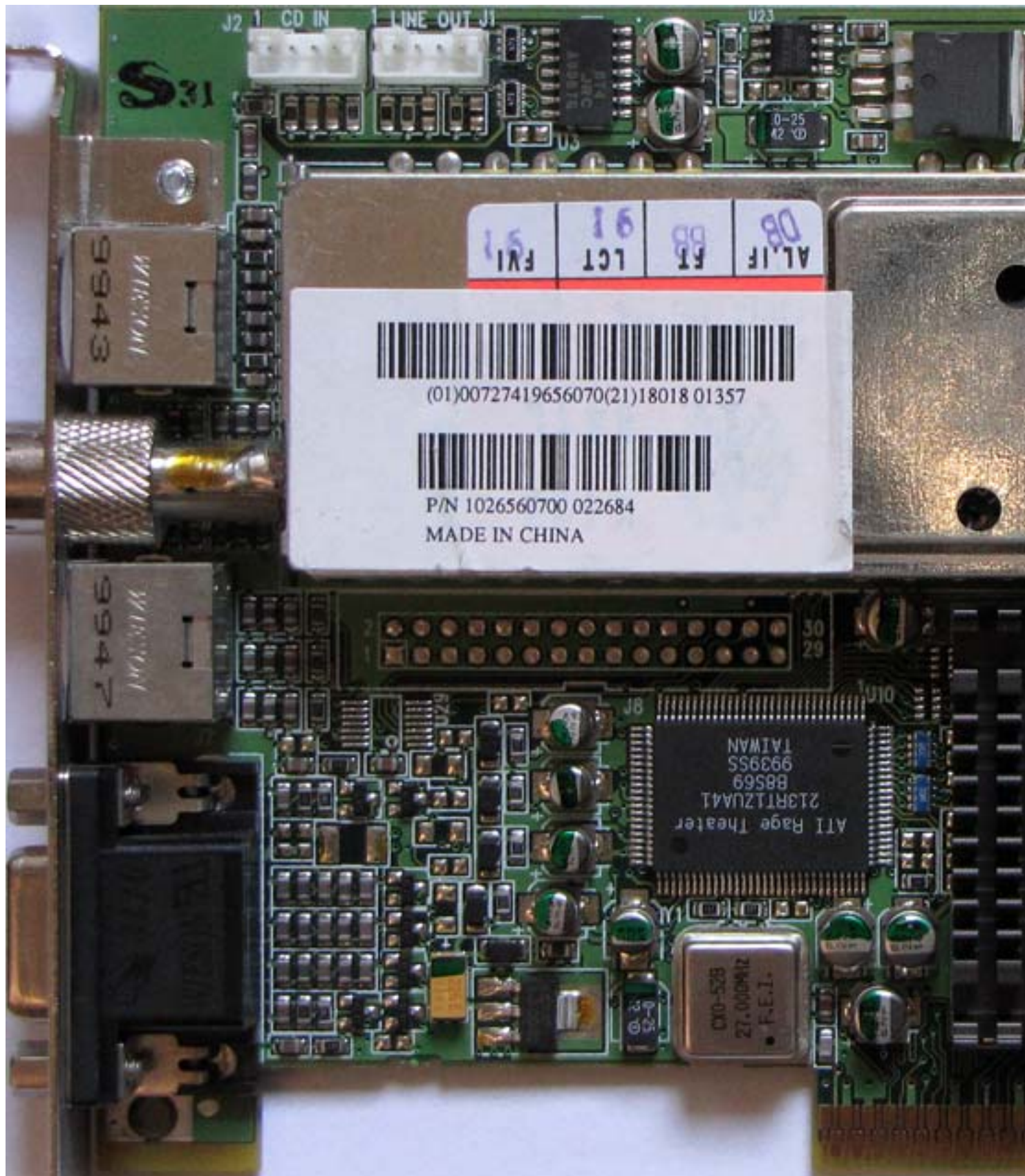
Rage Fury Pro/Xpert 2000 Pro

Close

ATI Rage 128 Pro

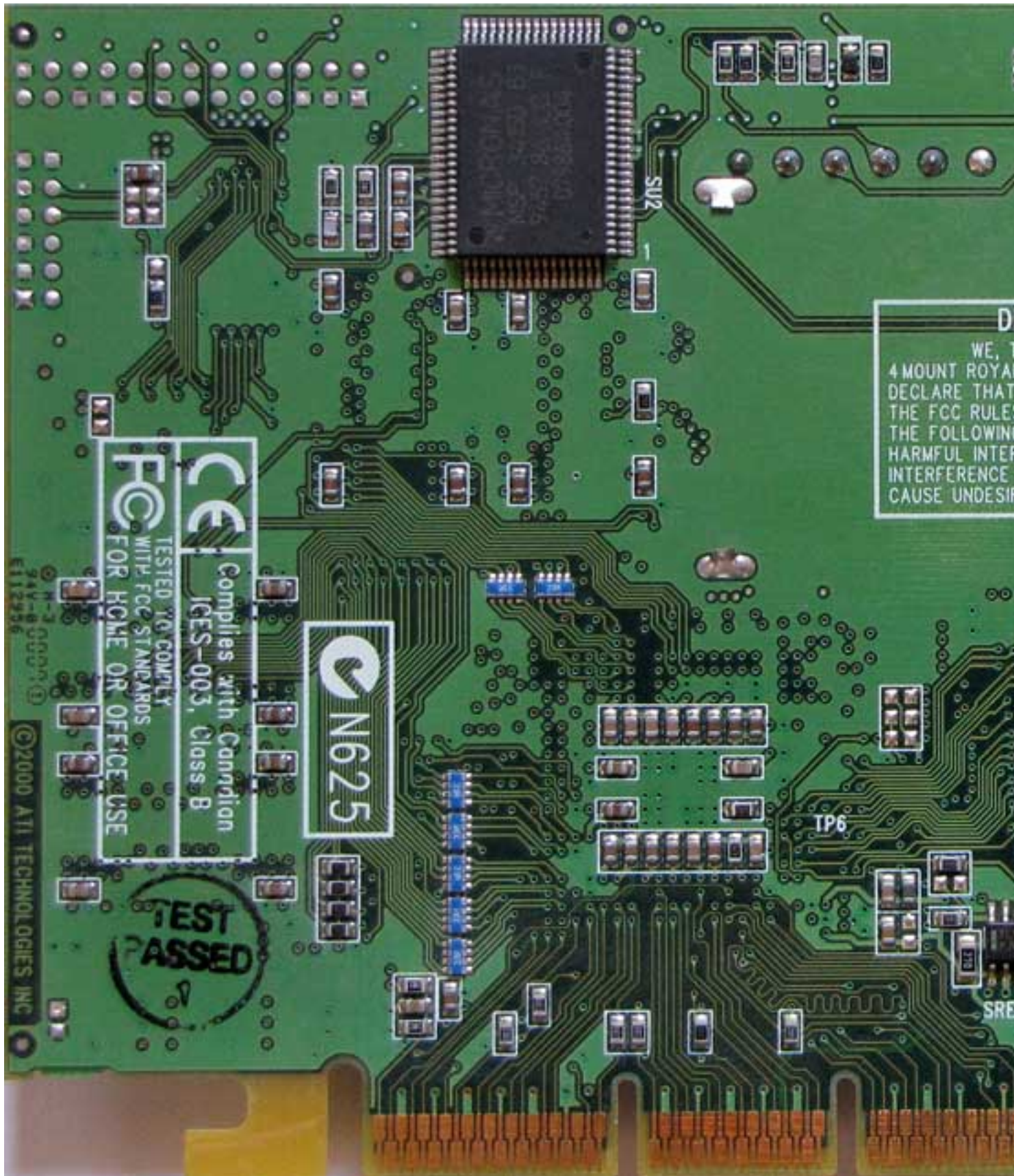
Written by Vlask

Sunday, 27 September 2009 11:30

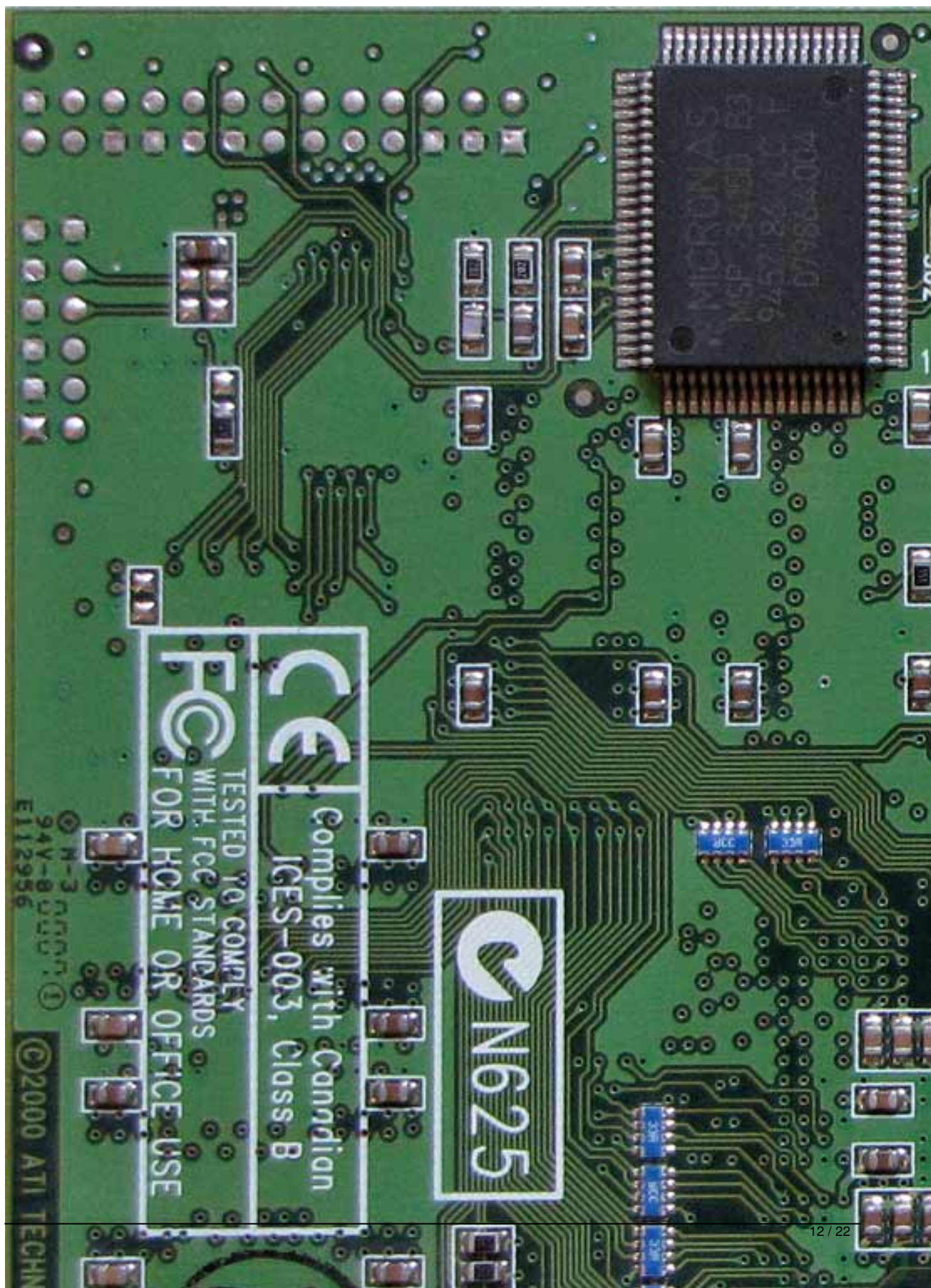


ATI Rage 128 Pro

Written by Vlask
Sunday, 27 September 2009 11:30








ATI Rage 128 Pro

Written by Vlask

Sunday, 27 September 2009 11:30

TechPowerUp GPU-Z 0.3.4

Graphics Card | Sensors | Validation

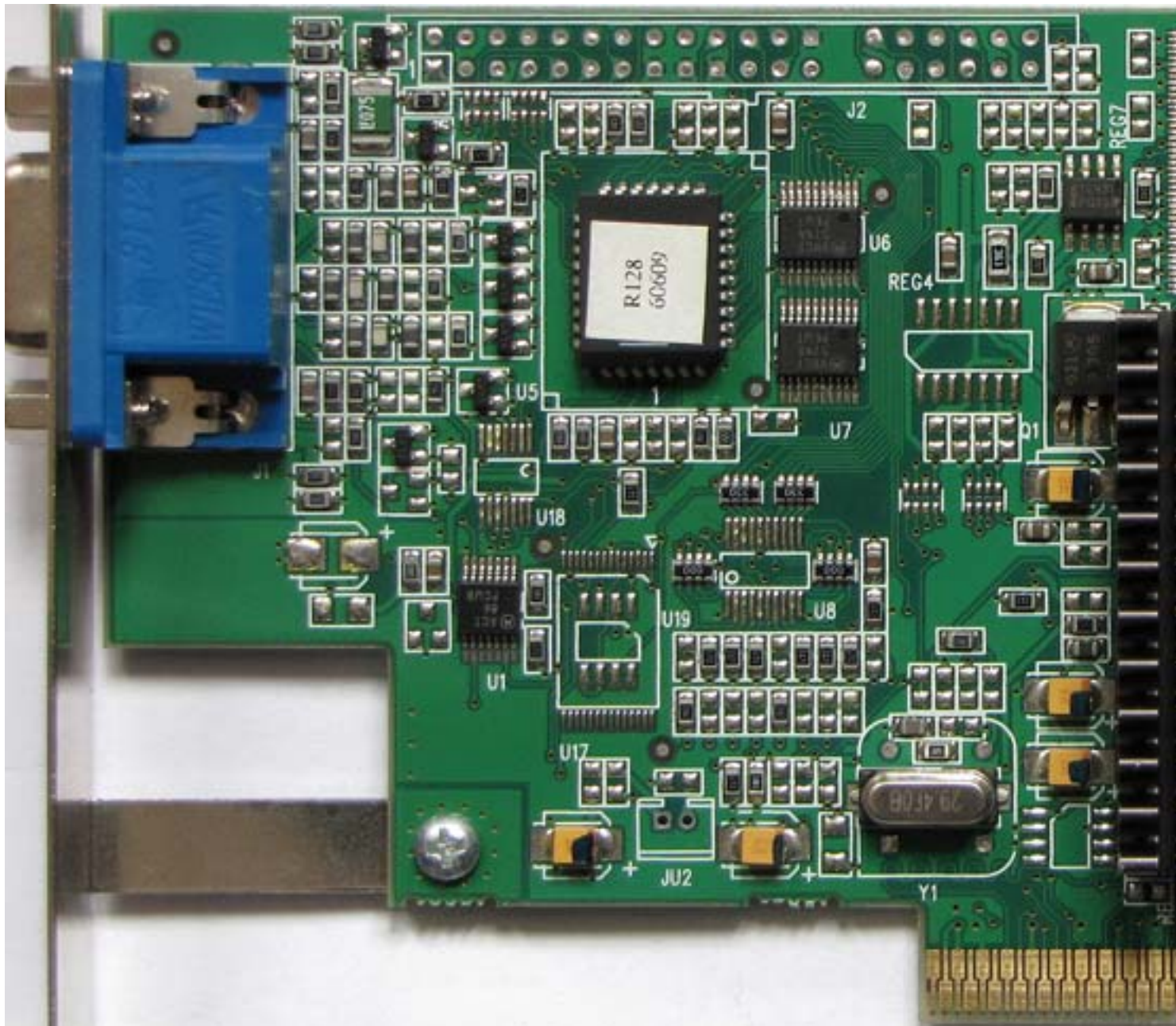
Name	All-In-Wonder 128 Pro AGP			
GPU	Rage128	Revision	N/A	
Technology	250 nm	Die Size	Unknown	
Release Date	1998	Transistors	Unknown	
BIOS Version	(C) 1988-99, ATI Technologies Inc. BK2.0.2 VR001....			
Device ID	1002 - 5046	Subvendor	ATI (1002)	
ROPs	2	Bus Interface	AGP 4x @ 4x	
Shaders	0 Pixel / 0 Vertex		DirectX Support	6.0 / SM0.0
Pixel Fillrate	Unknown		Texture Fillrate	Unknown
Memory Type	SDR		Bus Width	64 Bit
Memory Size	32 MB		Bandwidth	Unknown
Driver Version	ati2mtag 6.14.10.6614 / XP			
GPU Clock	0 MHz	Memory	0 MHz	Shader
Default Clock	118 MHz	Memory	140 MHz	Shader
ATI CrossFire	Disabled			

All-In-Wonder 128 Pro AGP

Close

ATI Rage 128 Pro

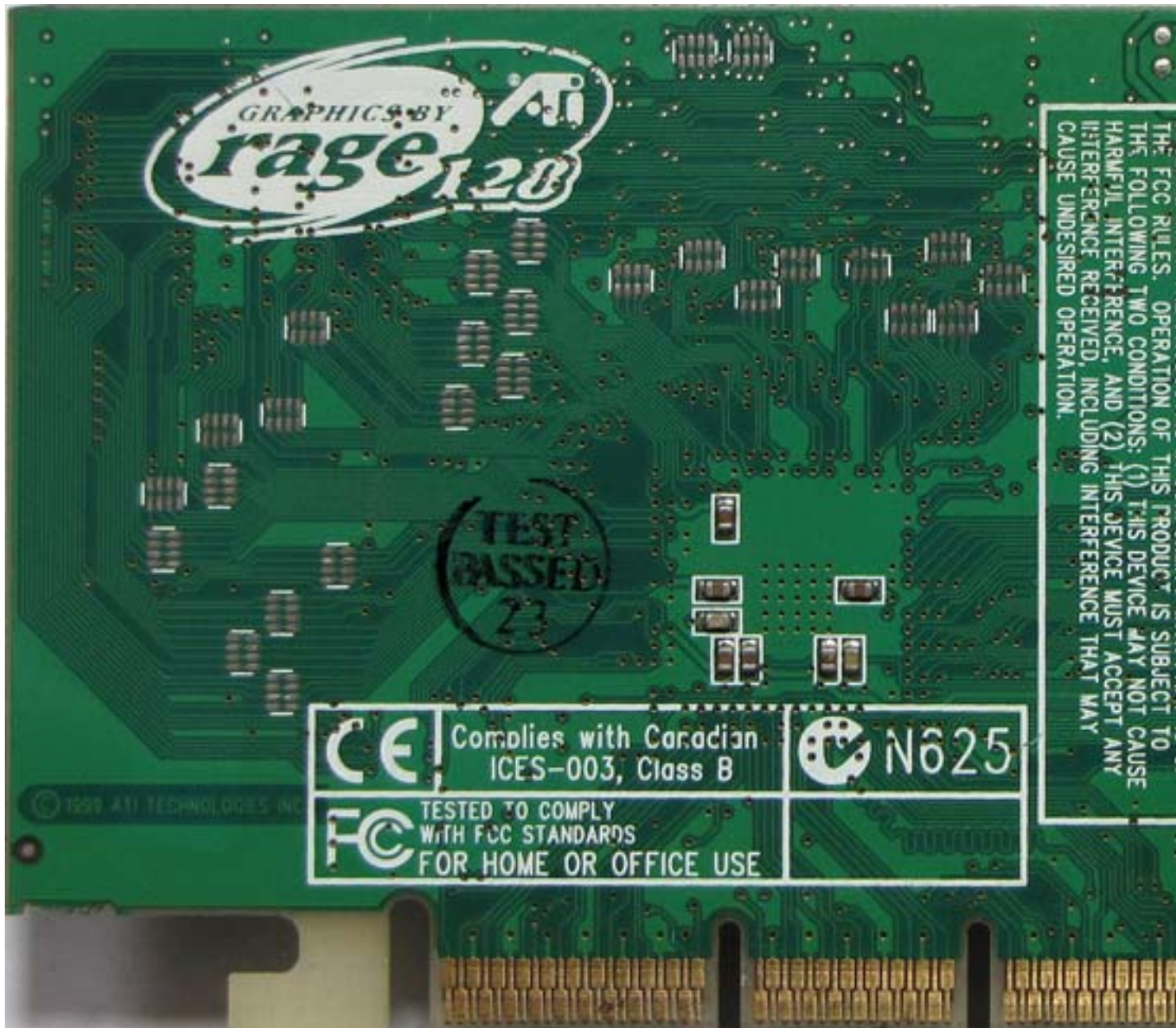
Written by Vlask
Sunday, 27 September 2009 11:30



ATI Rage 128 Pro

Written by Vlask

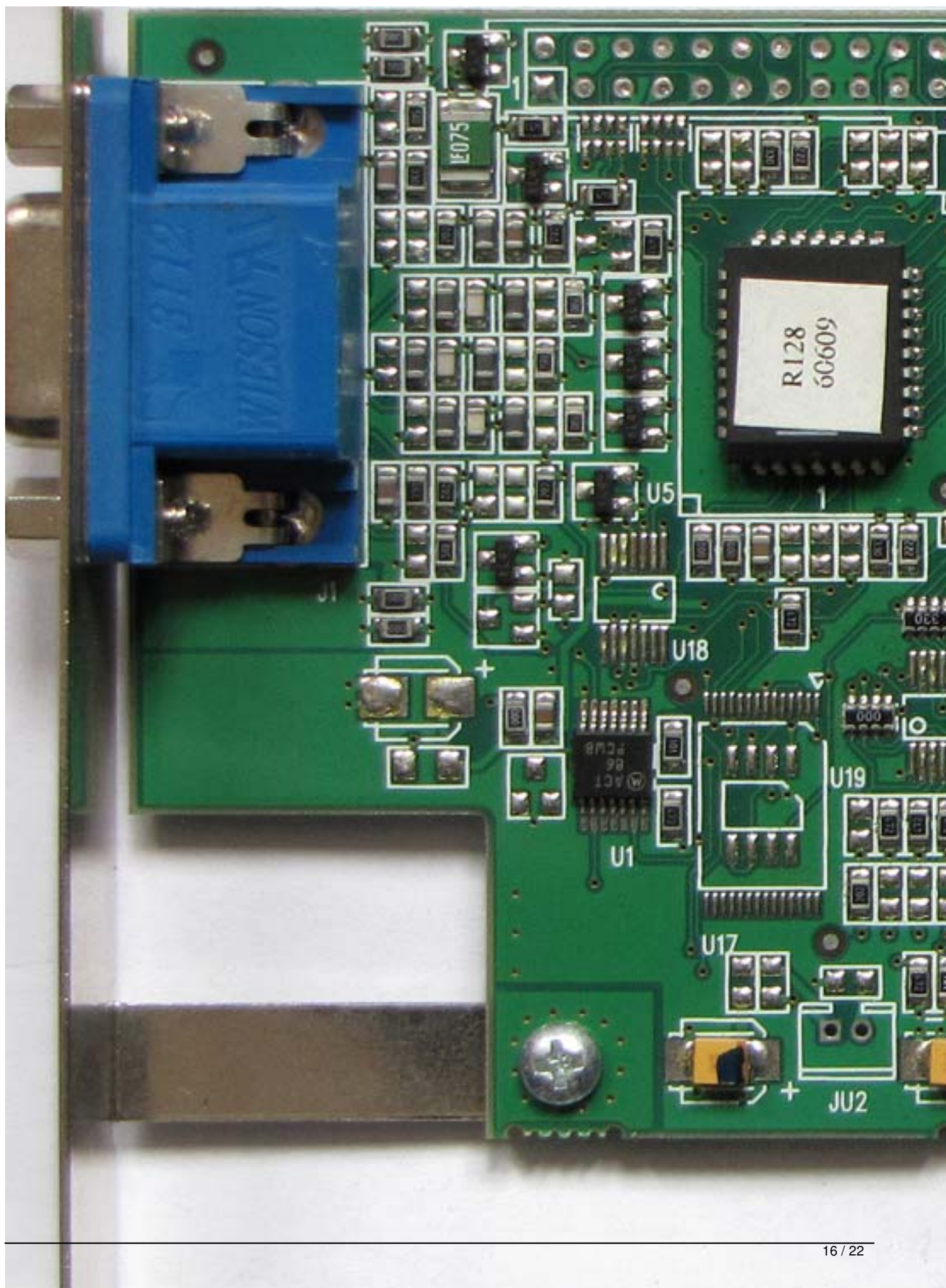
Sunday, 27 September 2009 11:30



ATI Rage 128 Pro

Written by Vlask

Sunday, 27 September 2009 11:30



ATI Rage 128 Pro

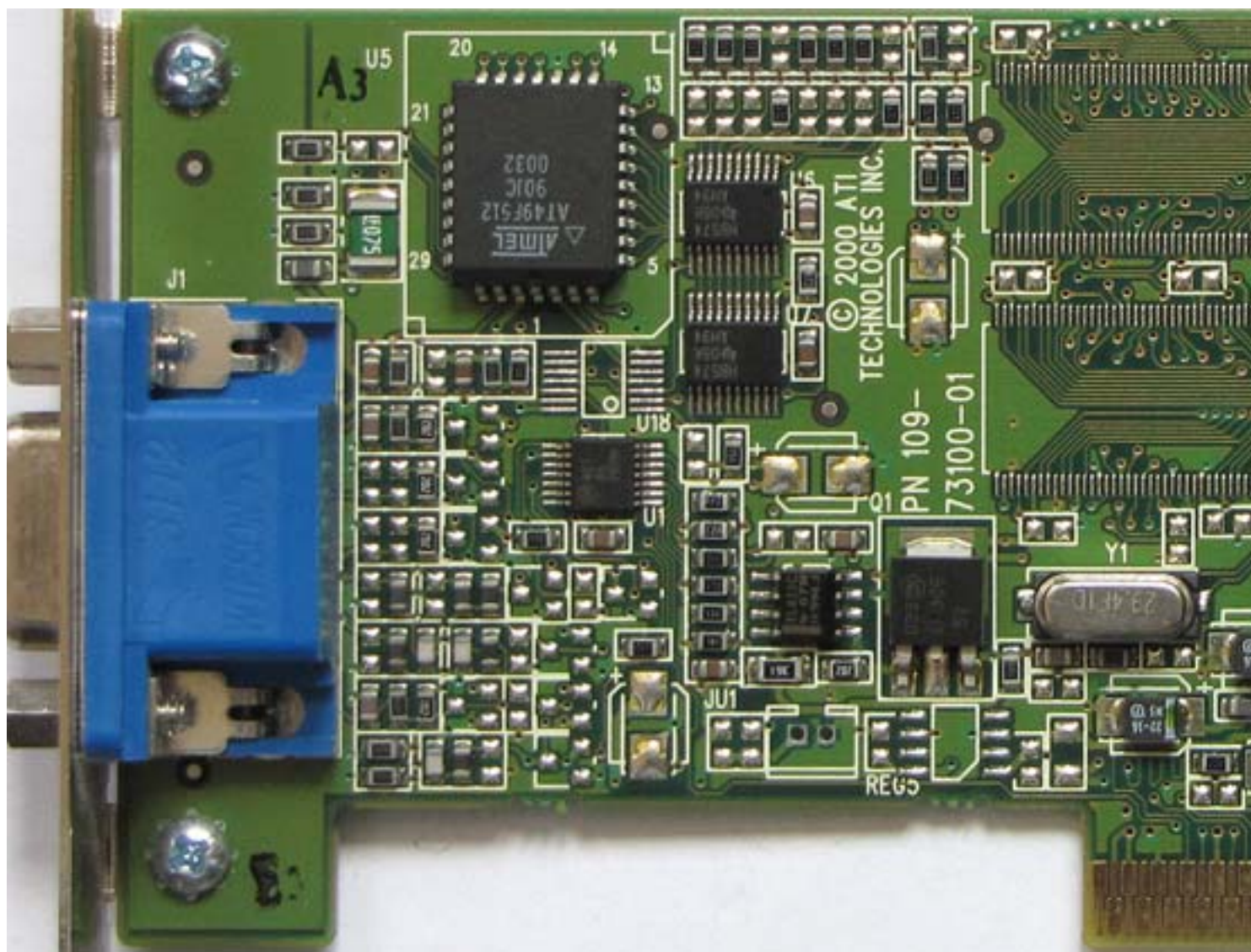
Written by Vlask
Sunday, 27 September 2009 11:30



ATI Rage 128 Pro

Written by Vlask

Sunday, 27 September 2009 11:30



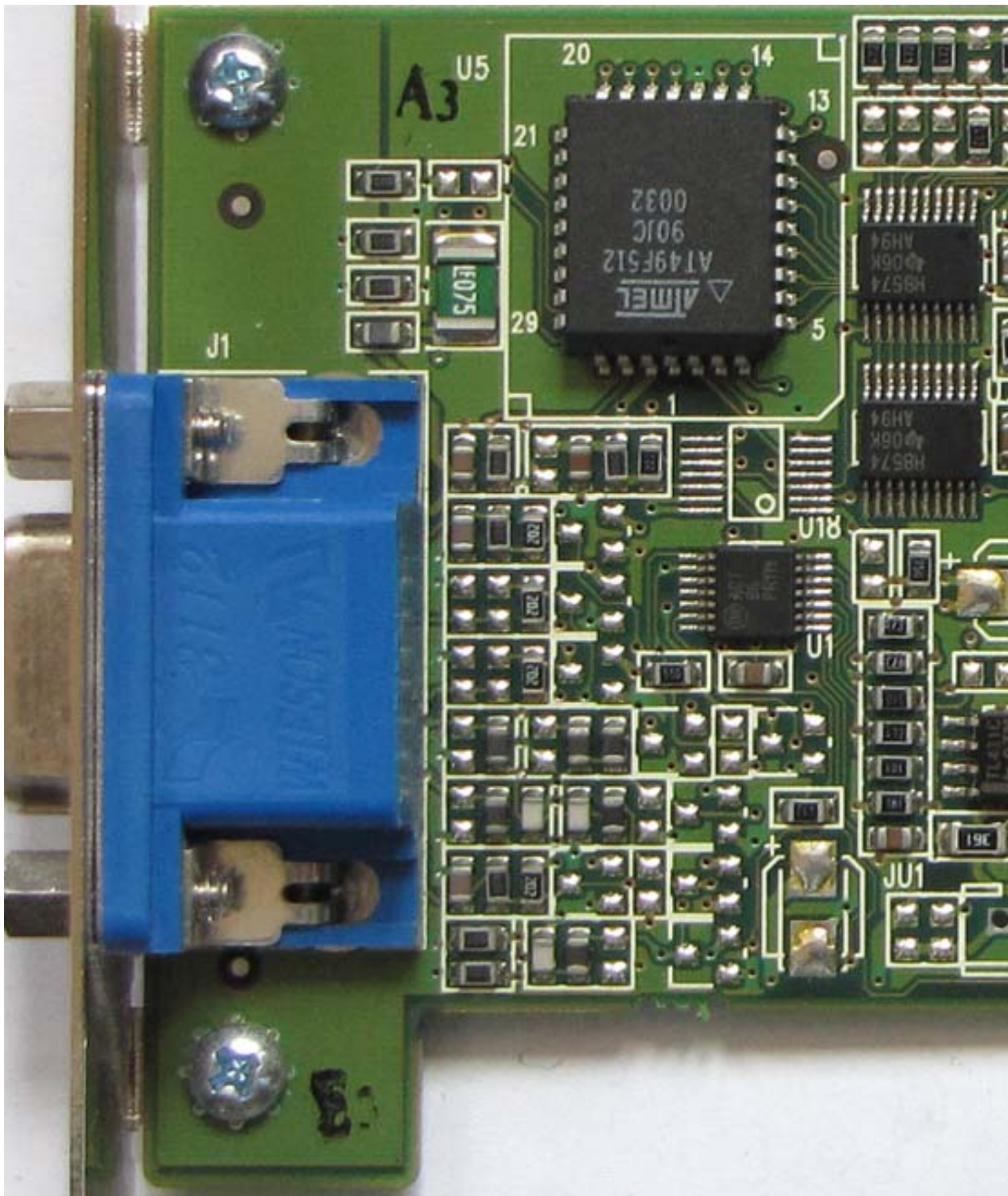
ATI Rage 128 Pro

Written by Vlask
Sunday, 27 September 2009 11:30



ATI Rage 128 Pro

Written by Vlask
Sunday, 27 September 2009 11:30





{/webgallery}