

ATI Radeon 9200 SE

Written by Vlask

Sunday, 27 September 2009 21:38



Core: RV280 200MHz 128bit

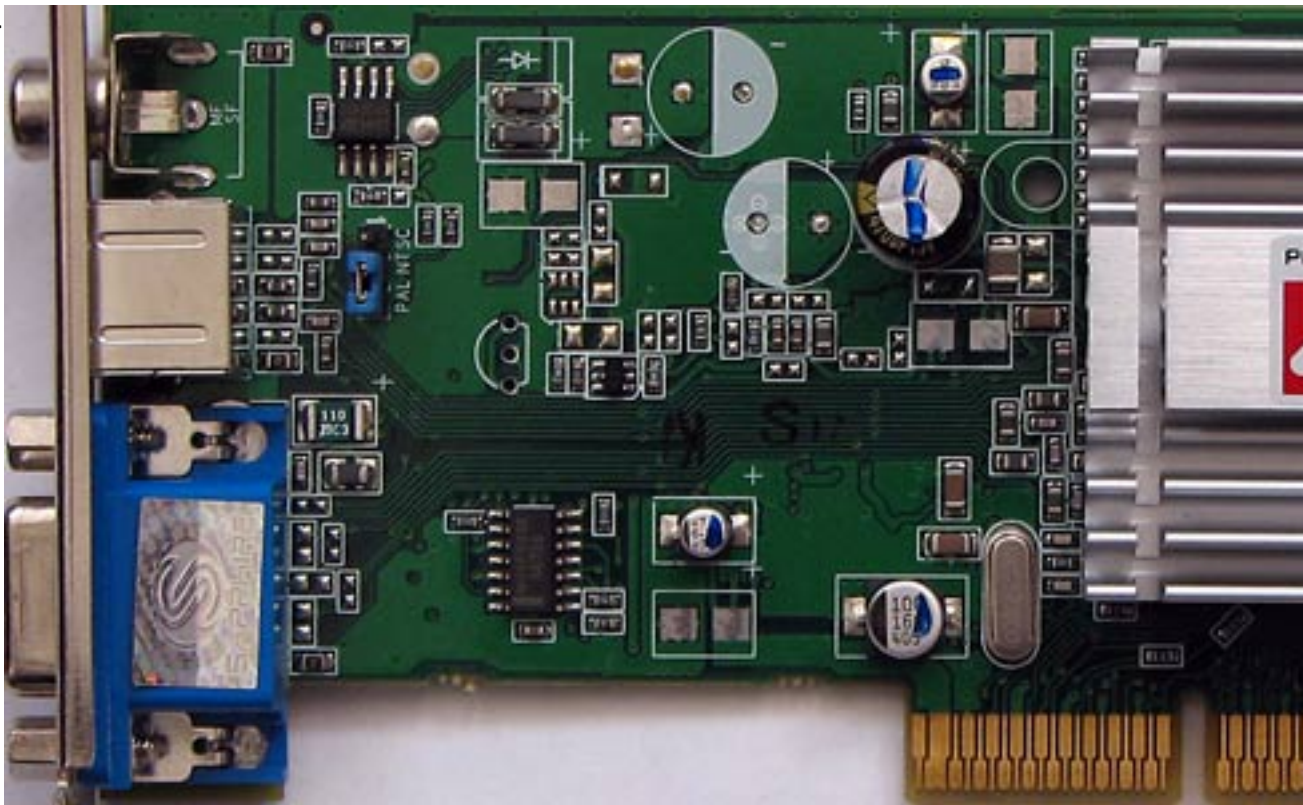
Memory: 64/128MB DDR 328MHz 64bit

Year: 2003 **Bus:** AGP 8x

Made: UMC 150nm Taiwan **Links:** [ixbt](#) [Opengl](#)

Bios: [Sapphire\(64MB\)](#)

{webgallery}



ATI Radeon 9200 SE

Written by Vlask

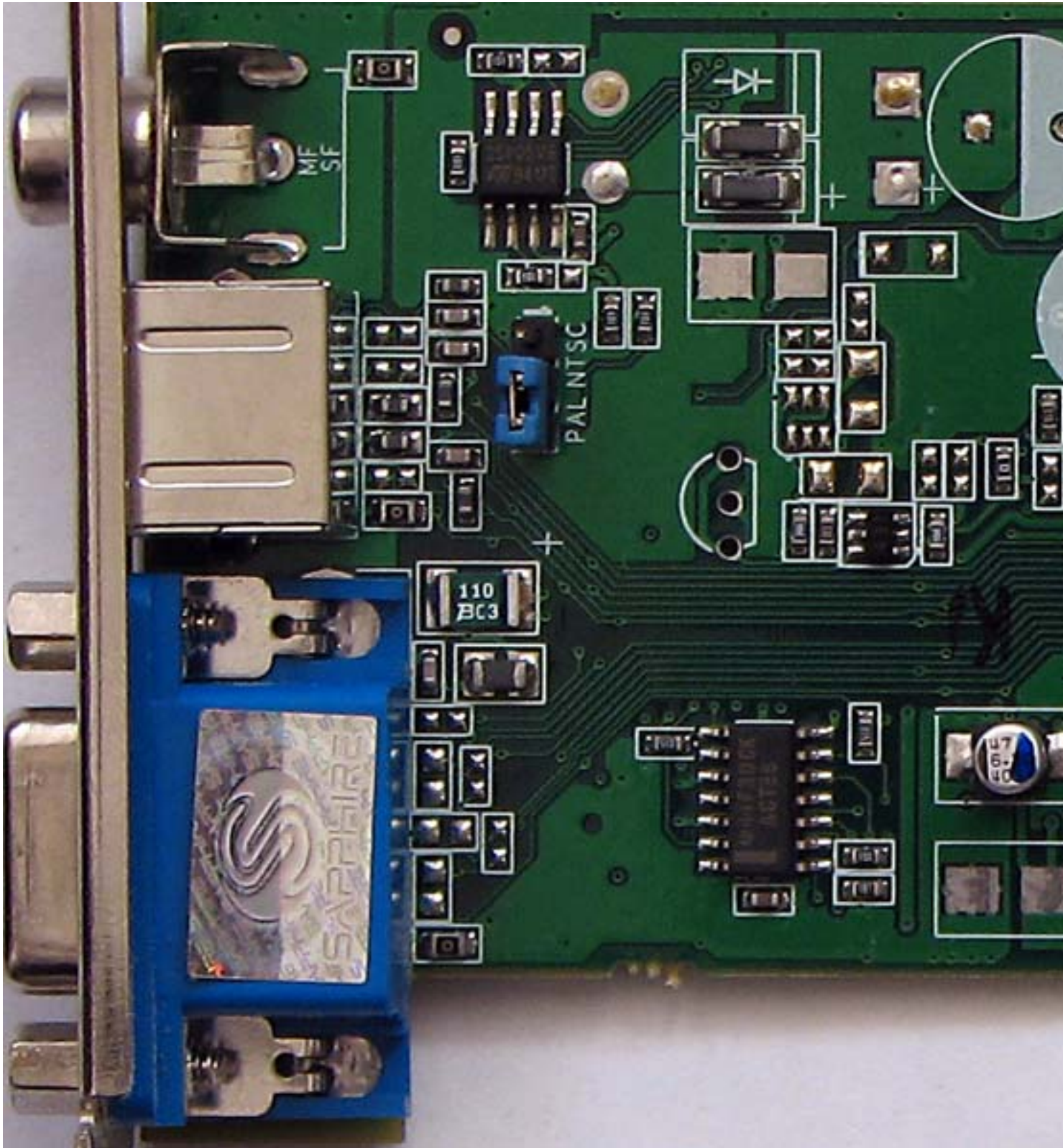
Sunday, 27 September 2009 21:38



ATI Radeon 9200 SE

Written by Vlask

Sunday, 27 September 2009 21:38



ATI Radeon 9200 SE

Written by Vlask

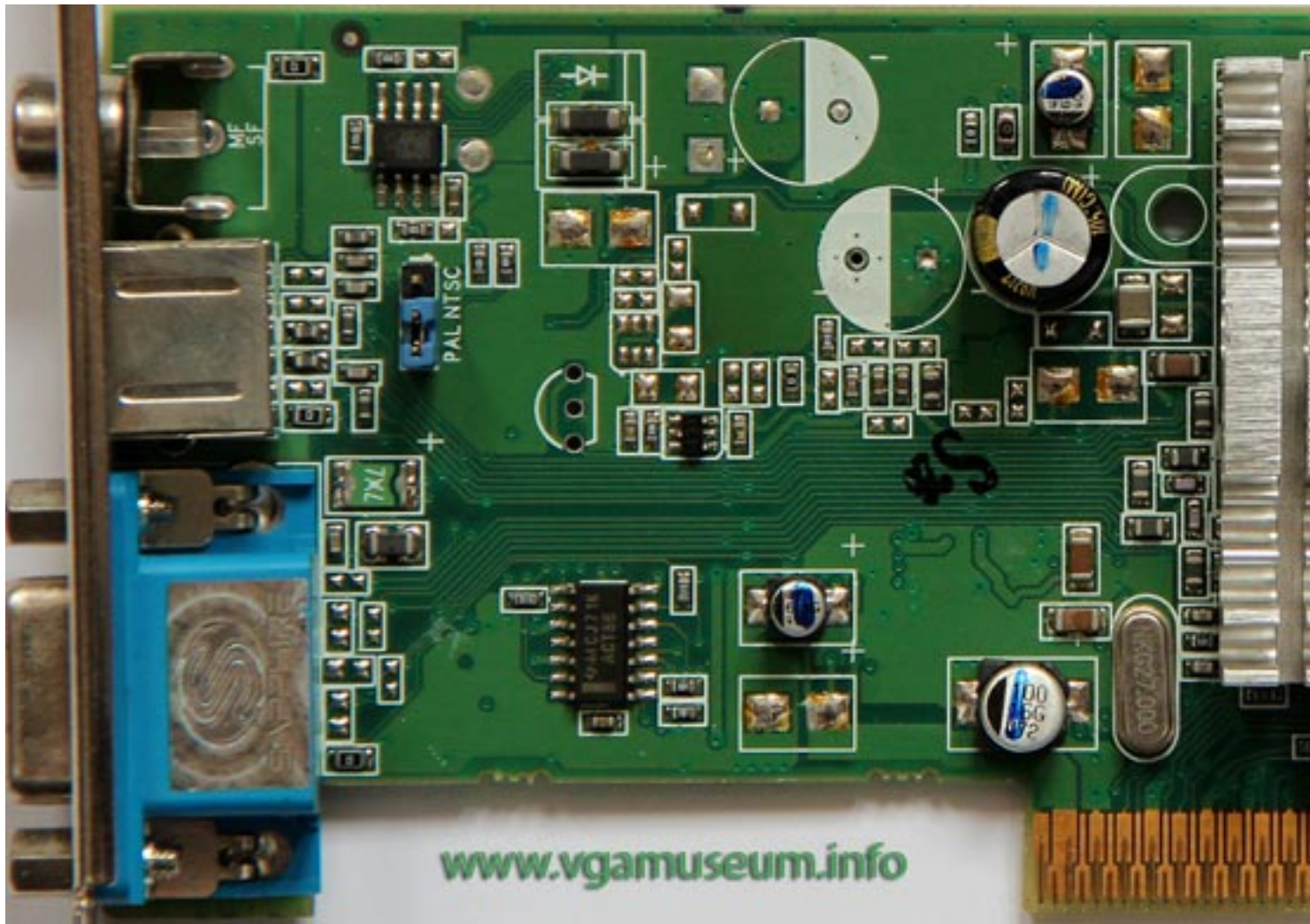
Sunday, 27 September 2009 21:38



ATI Radeon 9200 SE

Written by Vlask

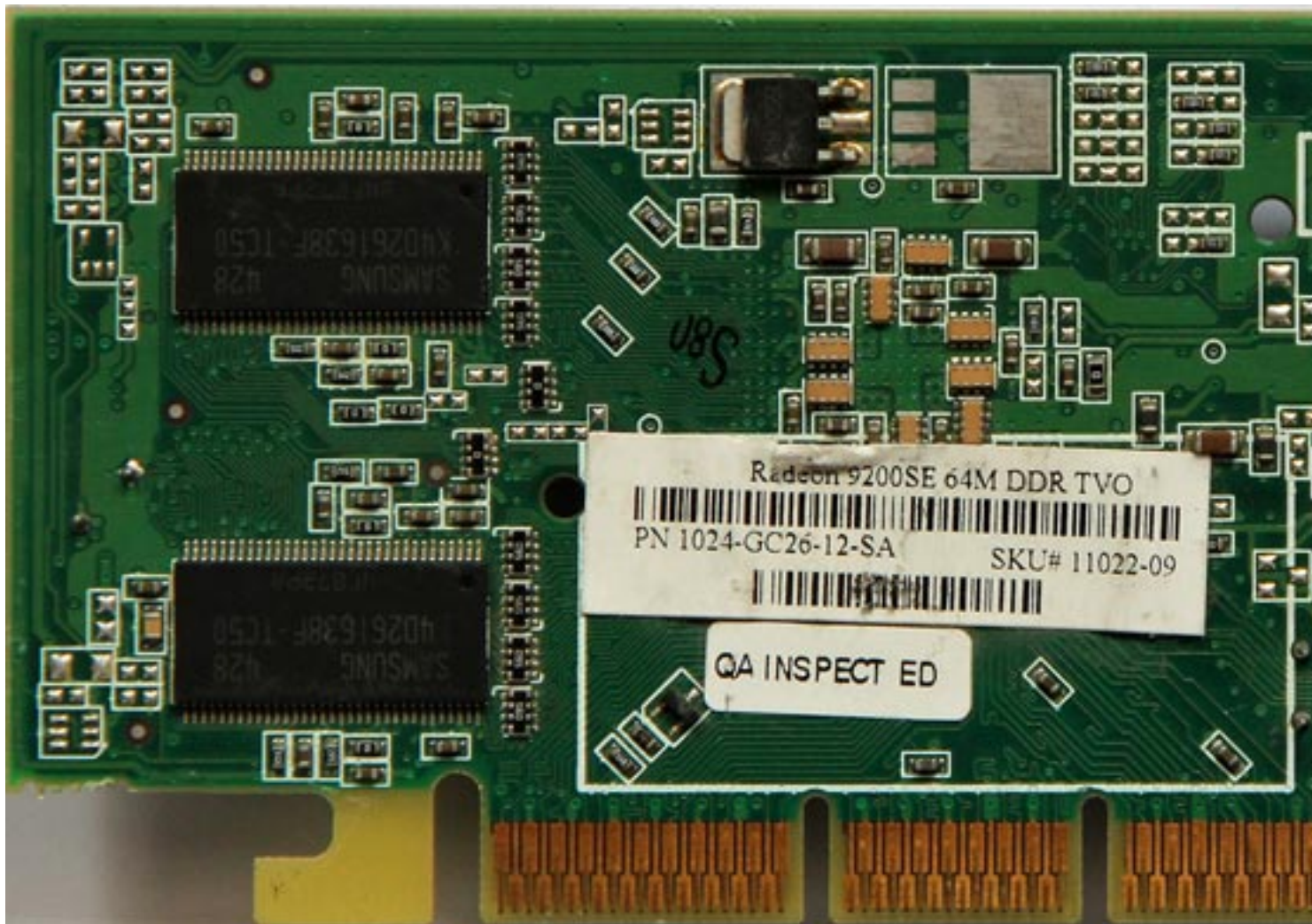
Sunday, 27 September 2009 21:38



ATI Radeon 9200 SE

Written by Vlask

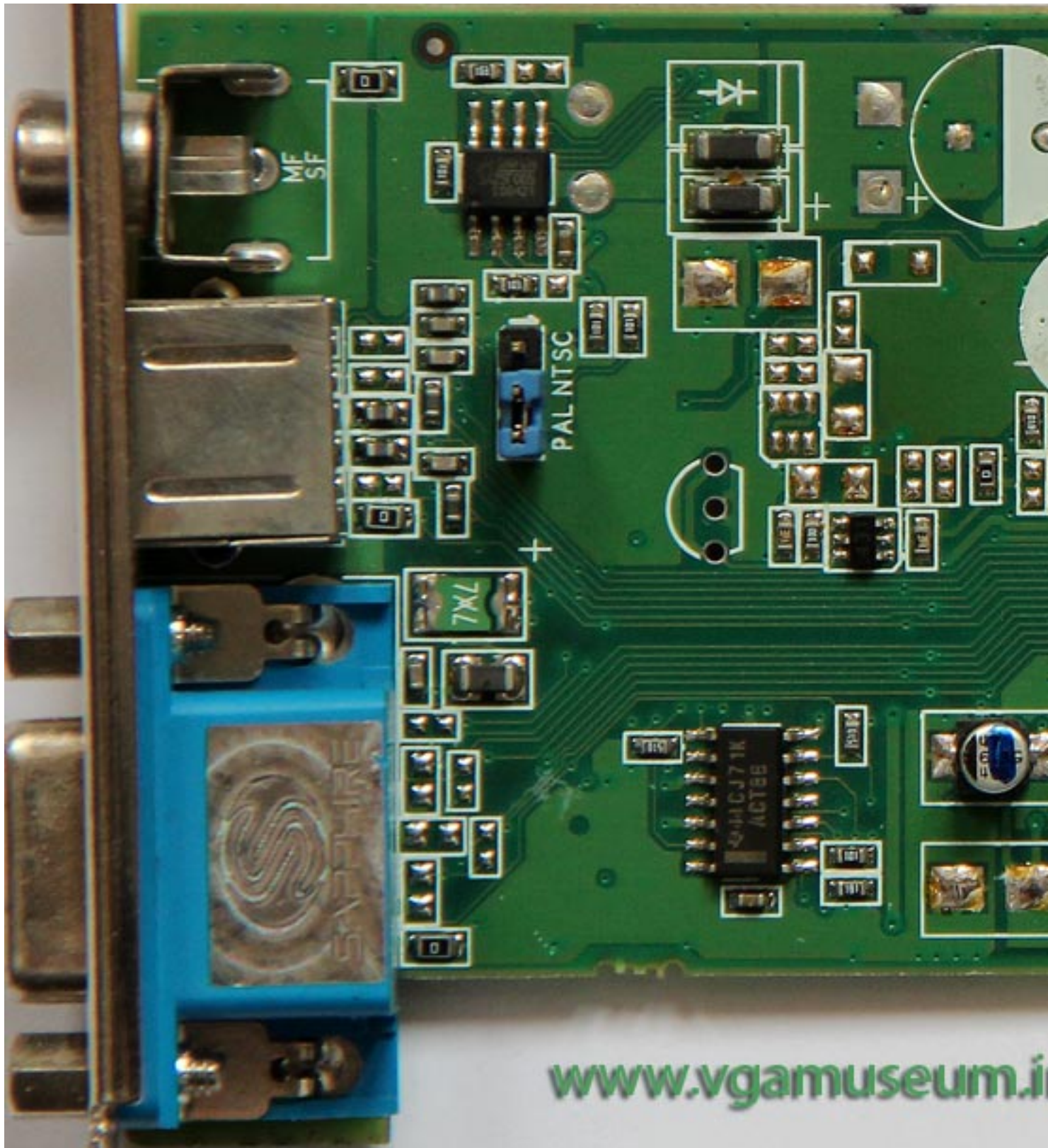
Sunday, 27 September 2009 21:38



ATI Radeon 9200 SE

Written by Vlask

Sunday, 27 September 2009 21:38

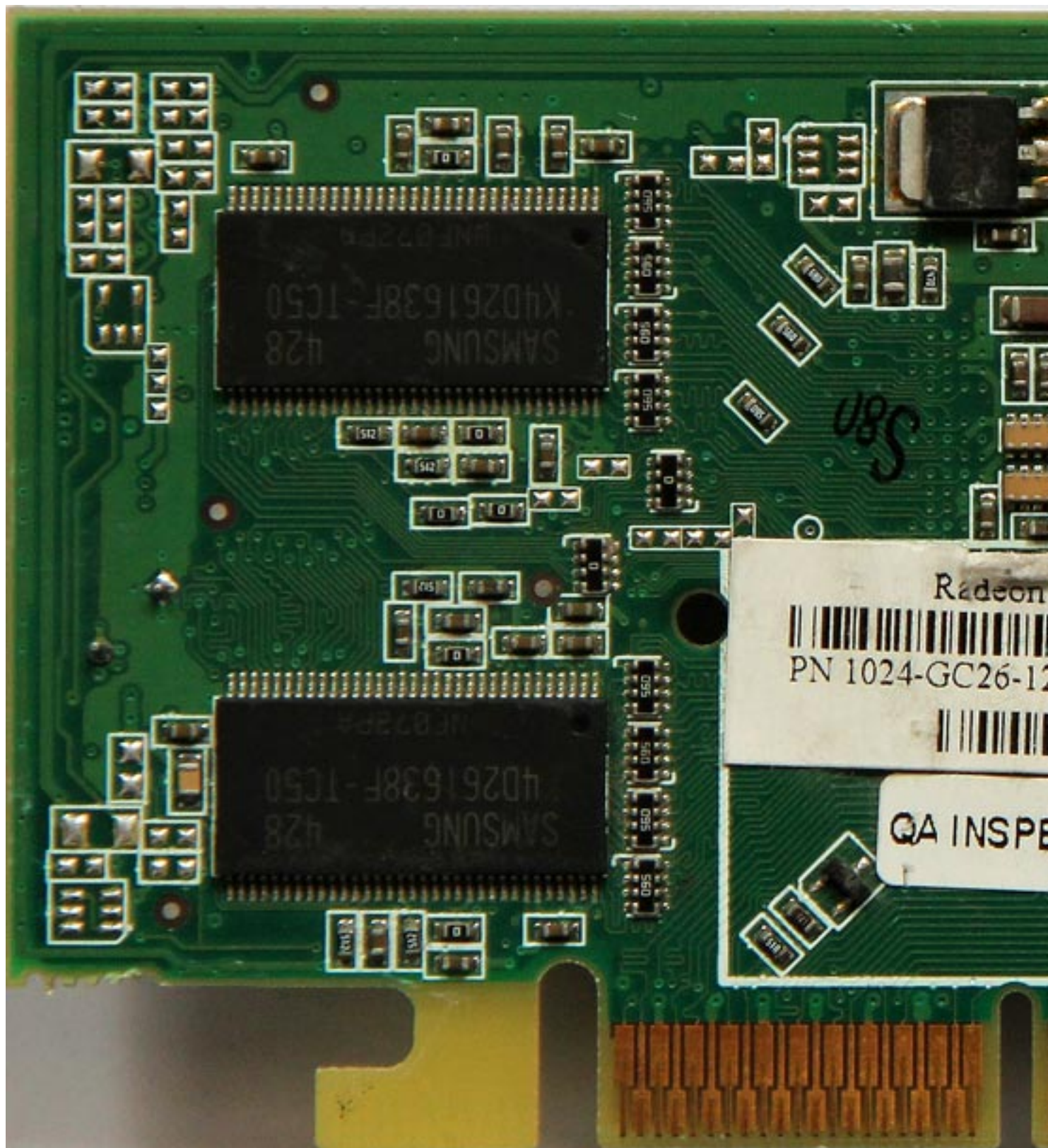


www.vgamuseum.it

ATI Radeon 9200 SE

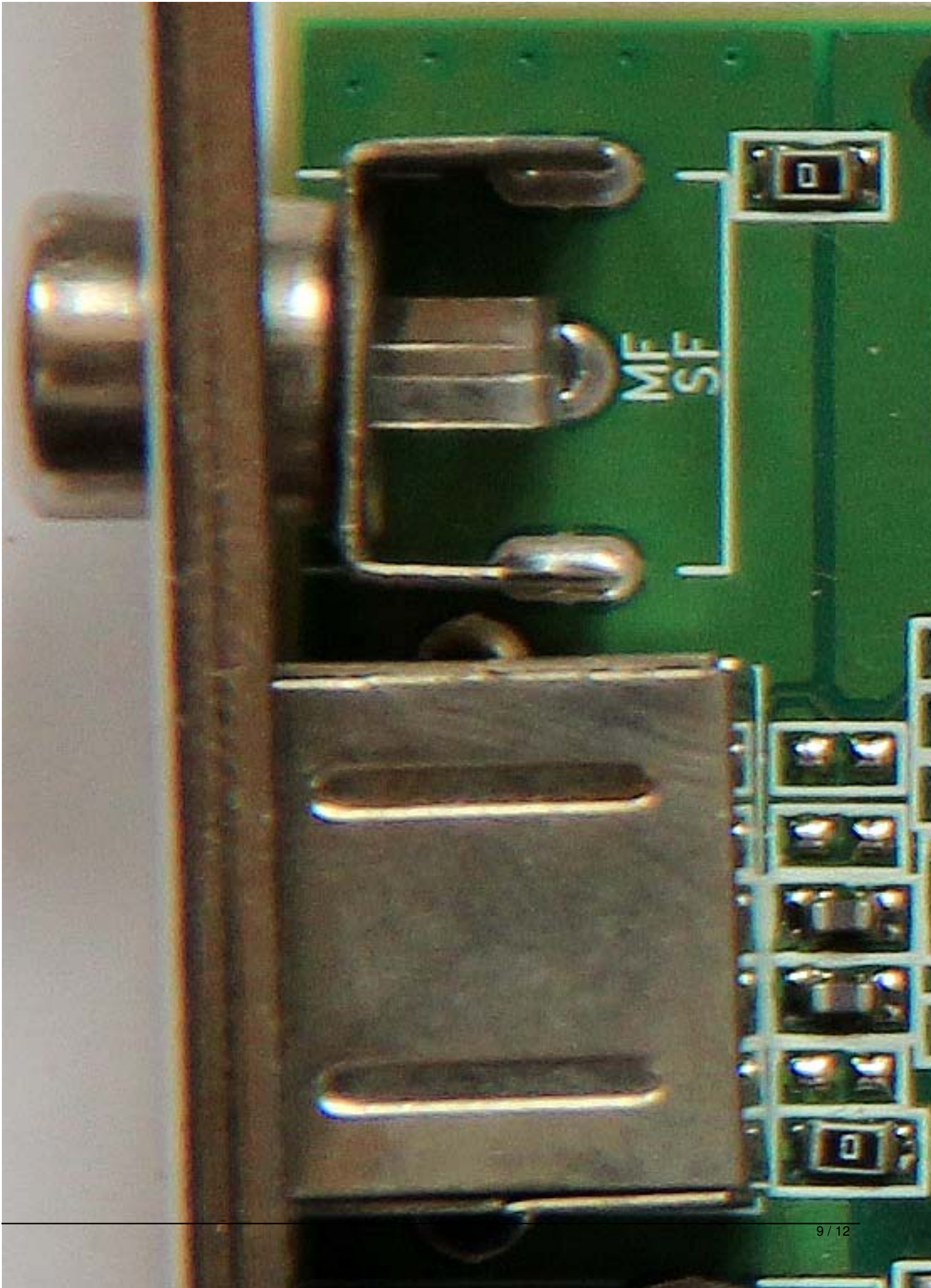
Written by Vlask

Sunday, 27 September 2009 21:38



ATI Radeon 9200 SE

Written by Vlask
Sunday, 27 September 2009 21:38



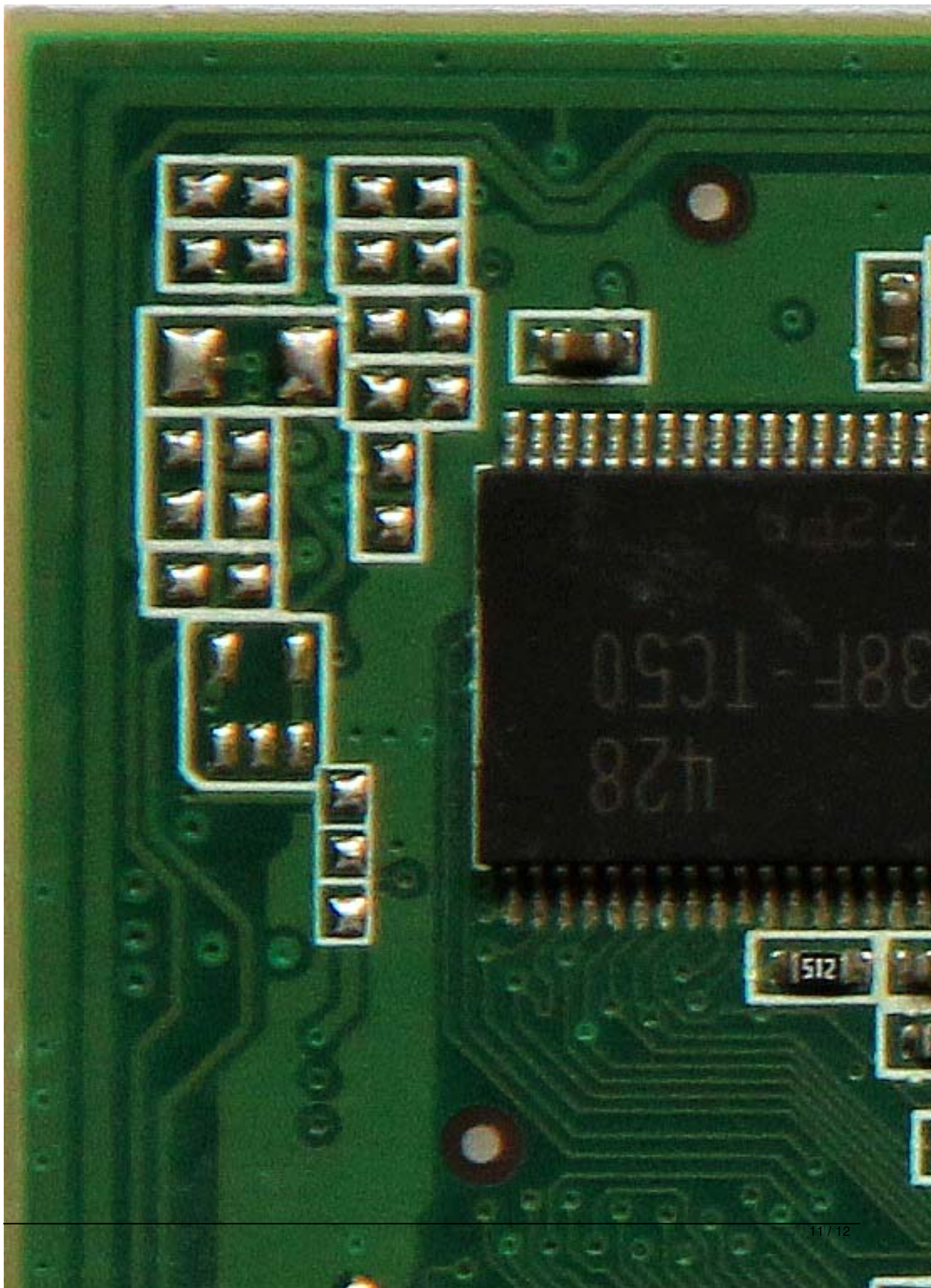
ATI Radeon 9200 SE

Written by Vlask

Sunday, 27 September 2009 21:38

ATI Radeon 9200 SE

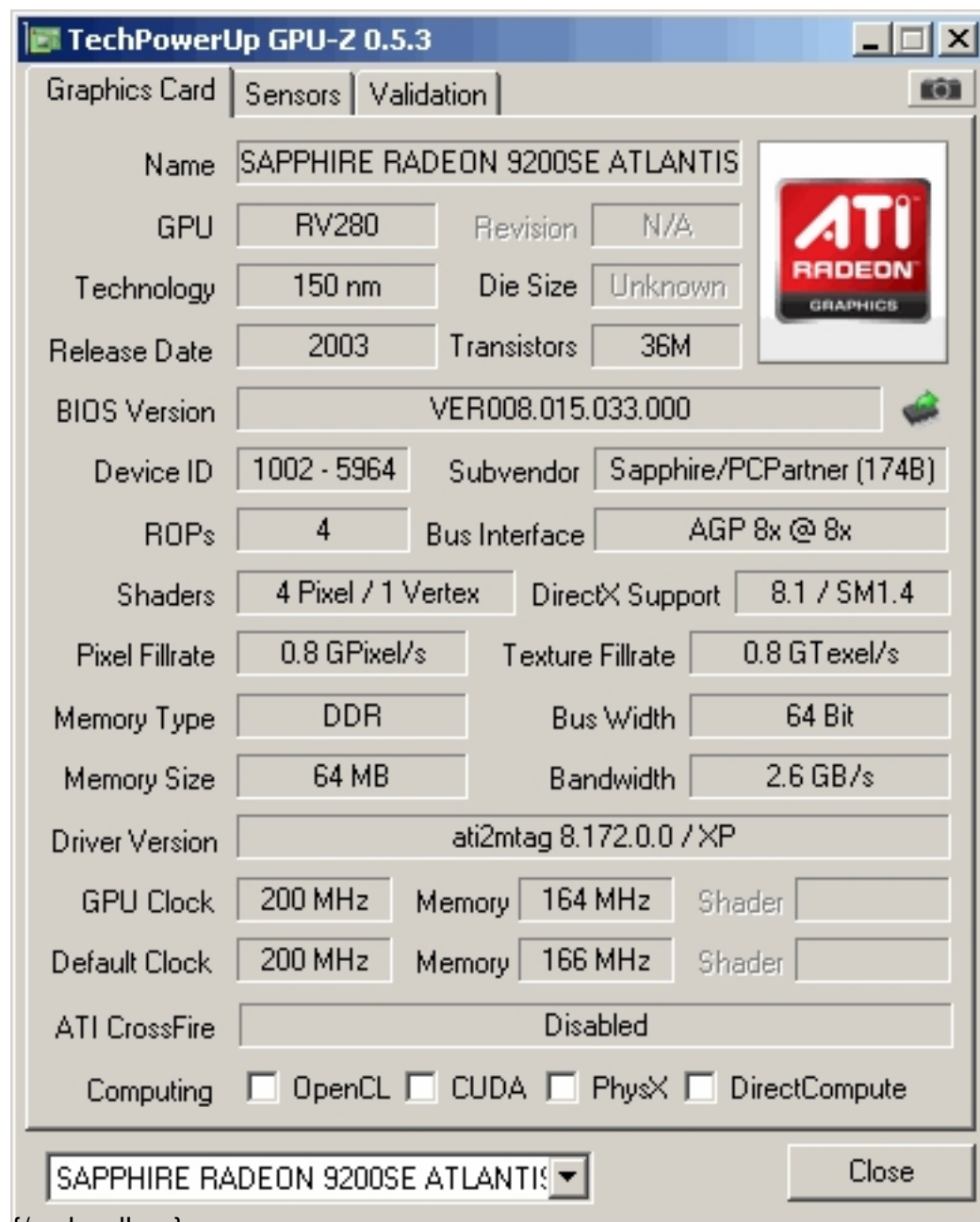
Written by Vlask
Sunday, 27 September 2009 21:38



ATI Radeon 9200 SE

Written by Vlask

Sunday, 27 September 2009 21:38



The screenshot shows the TechPowerUp GPU-Z 0.5.3 application window. The 'Graphics Card' tab is selected. The window displays various specifications for the SAPPHIRE RADEON 9200SE ATLANTIS. The GPU is RV280, 150 nm technology, released in 2003, with 36M transistors. The BIOS version is VER008.015.033.000. The device ID is 1002 - 5964, and the subvendor is Sapphire/PCPartner (174B). The ROPs are 4, and the bus interface is AGP 8x @ 8x. The shaders are 4 Pixel / 1 Vertex, and DirectX support is 8.1 / SM1.4. The pixel fillrate is 0.8 GPixel/s, and the texture fillrate is 0.8 GTexel/s. The memory type is DDR, with a size of 64 MB and a bandwidth of 2.6 GB/s. The driver version is ati2mtag 8.172.0.0 / XP. The GPU clock is 200 MHz, and the memory clock is 164 MHz. The default clock is 200 MHz, and the default memory clock is 166 MHz. The ATI CrossFire is disabled. The computing options are OpenCL, CUDA, PhysX, and DirectCompute, all of which are unchecked. The window has a 'Close' button at the bottom right.

Category	Value
Name	SAPPHIRE RADEON 9200SE ATLANTIS
GPU	RV280
Revision	N/A
Technology	150 nm
Die Size	Unknown
Release Date	2003
Transistors	36M
BIOS Version	VER008.015.033.000
Device ID	1002 - 5964
Subvendor	Sapphire/PCPartner (174B)
ROPs	4
Bus Interface	AGP 8x @ 8x
Shaders	4 Pixel / 1 Vertex
DirectX Support	8.1 / SM1.4
Pixel Fillrate	0.8 GPixel/s
Texture Fillrate	0.8 GTexel/s
Memory Type	DDR
Bus Width	64 Bit
Memory Size	64 MB
Bandwidth	2.6 GB/s
Driver Version	ati2mtag 8.172.0.0 / XP
GPU Clock	200 MHz
Memory	164 MHz
Shader	
Default Clock	200 MHz
Memory	166 MHz
Shader	
ATI CrossFire	Disabled
Computing	<input type="checkbox"/> OpenCL <input type="checkbox"/> CUDA <input type="checkbox"/> PhysX <input type="checkbox"/> DirectCompute

SAPPHIRE RADEON 9200SE ATLANTIS

Close

{/webgallery}