

## Cirrus Logic CL-GD5446

Written by Vlask

Thursday, 01 October 2009 23:08

---



**Core:** CL-GD5446 / BV 135MHz 64bit

**Memory:** 1-2MB (4MB max) EDO 80,538MHz 64bit

**Year:** 1996 **Bus:** PCI

**Made:** Taiwan **Links:** [Pdf](#) [web archive](#) [Technical reference manual](#)

**Bios:** [STB+5446BV](#)

{webgallery}

## Cirrus Logic CL-GD5446

Written by Vlask

Thursday, 01 October 2009 23:08



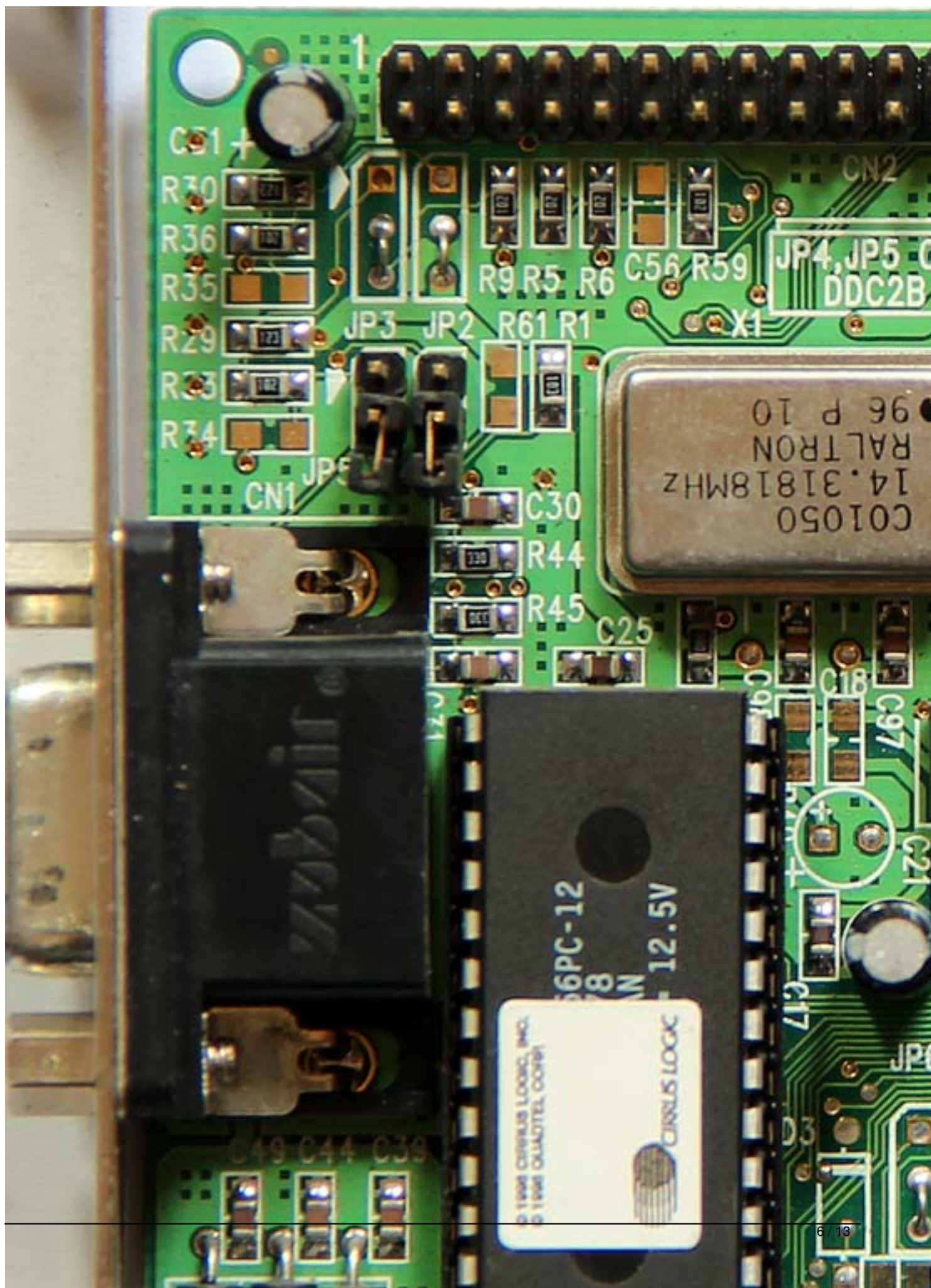












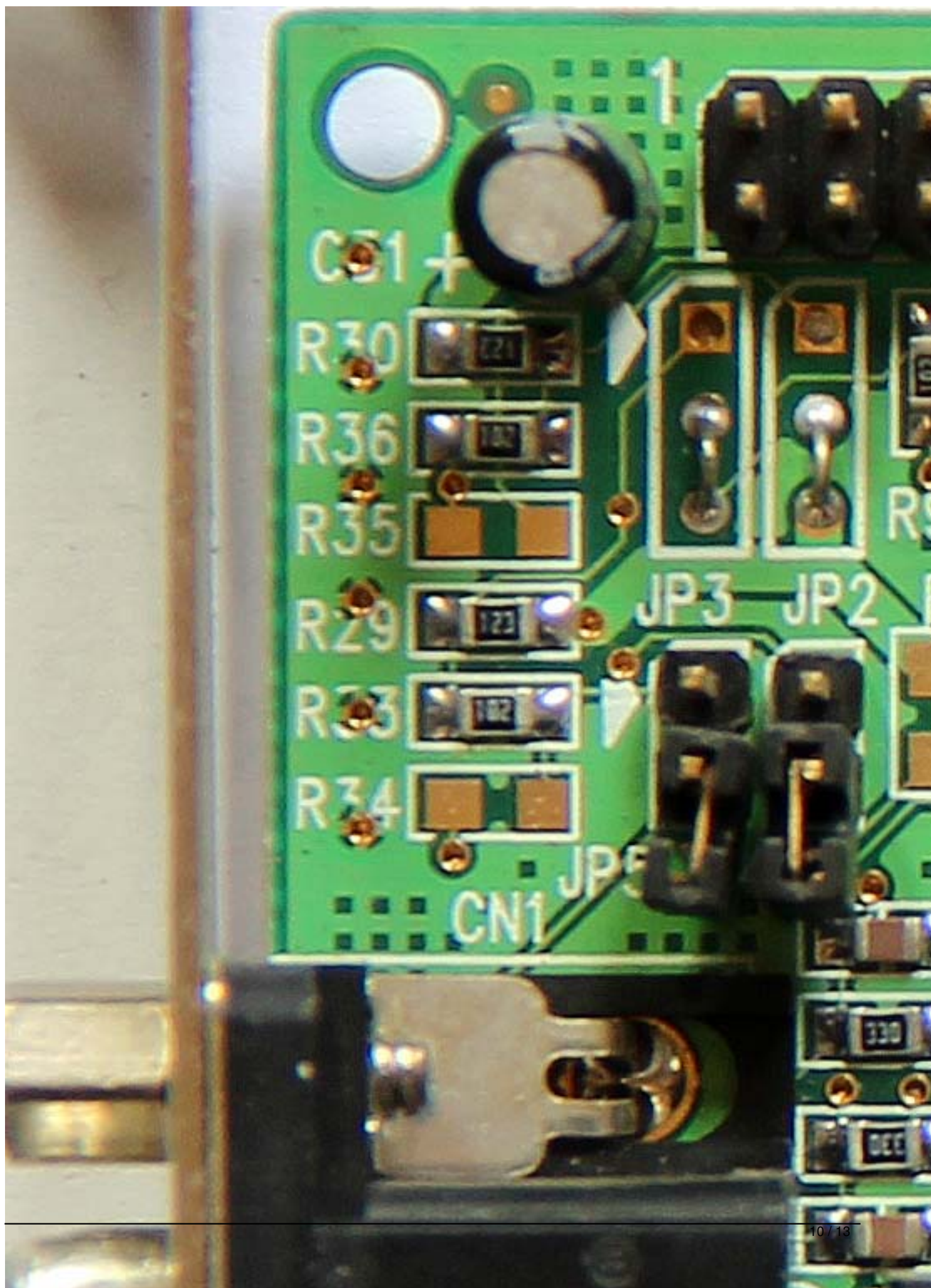






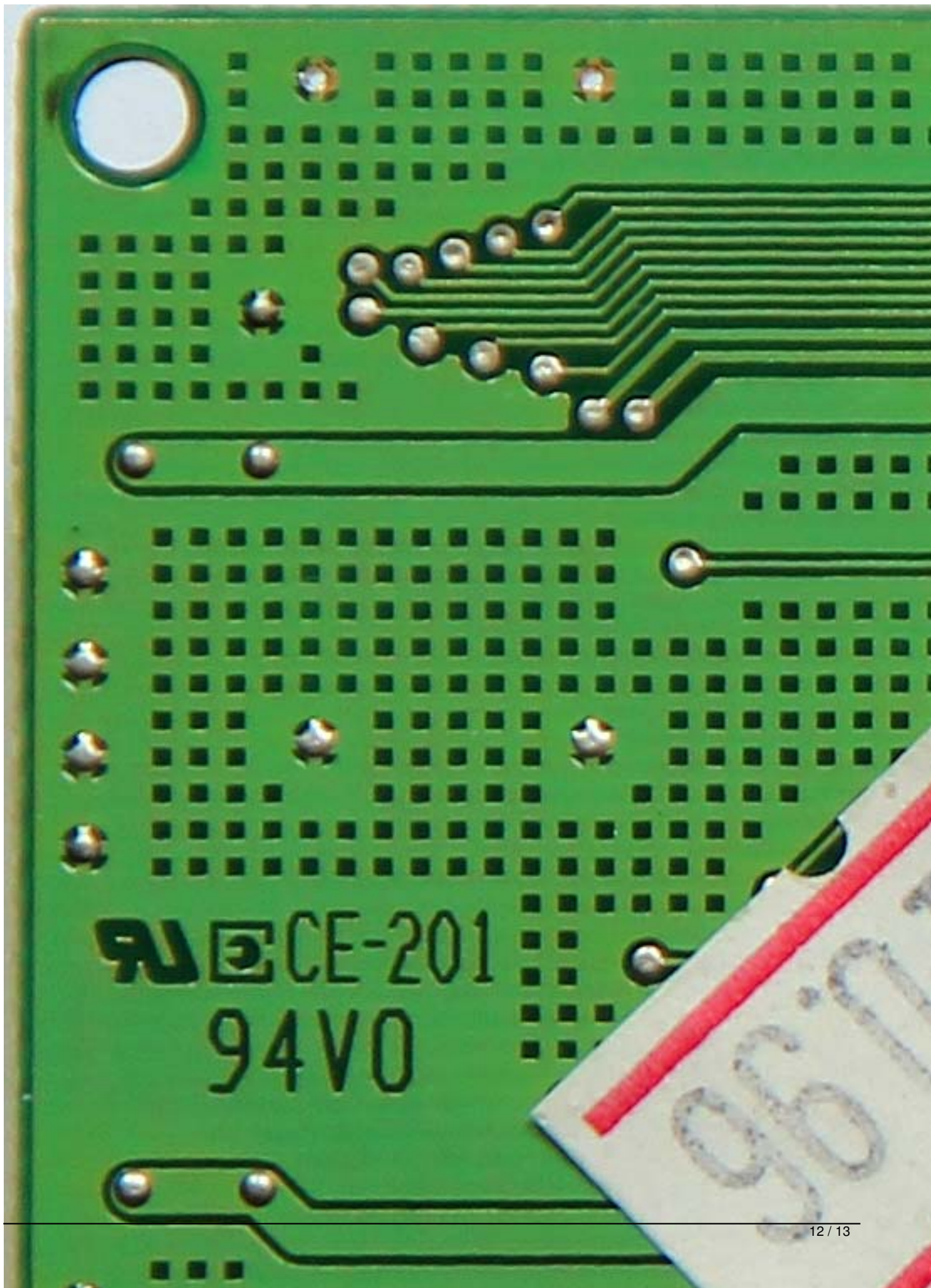














{/webgallery}