

ATi Radeon X850 XT

Written by Zaatharen

Friday, 28 March 2014 00:29



Core: R480 520MHz 256bit

Memory: 256MB GDDR3 1080MHz 256bit **Year:** 2004 **Bus:** PCI-E 16x **Made:** 130nm

Pixel pipelines: 12 **TMU per pipeline:** 1 **Vertex shaders:** 6 (v 2.0) **Pixel Shaders:** 16 (v 2.0) **Dir**

ectX:

9.0c

Memory bandwith:

34,6 GB/s

Pixel write speed:

8320

MPixel/s

Texel write speed:

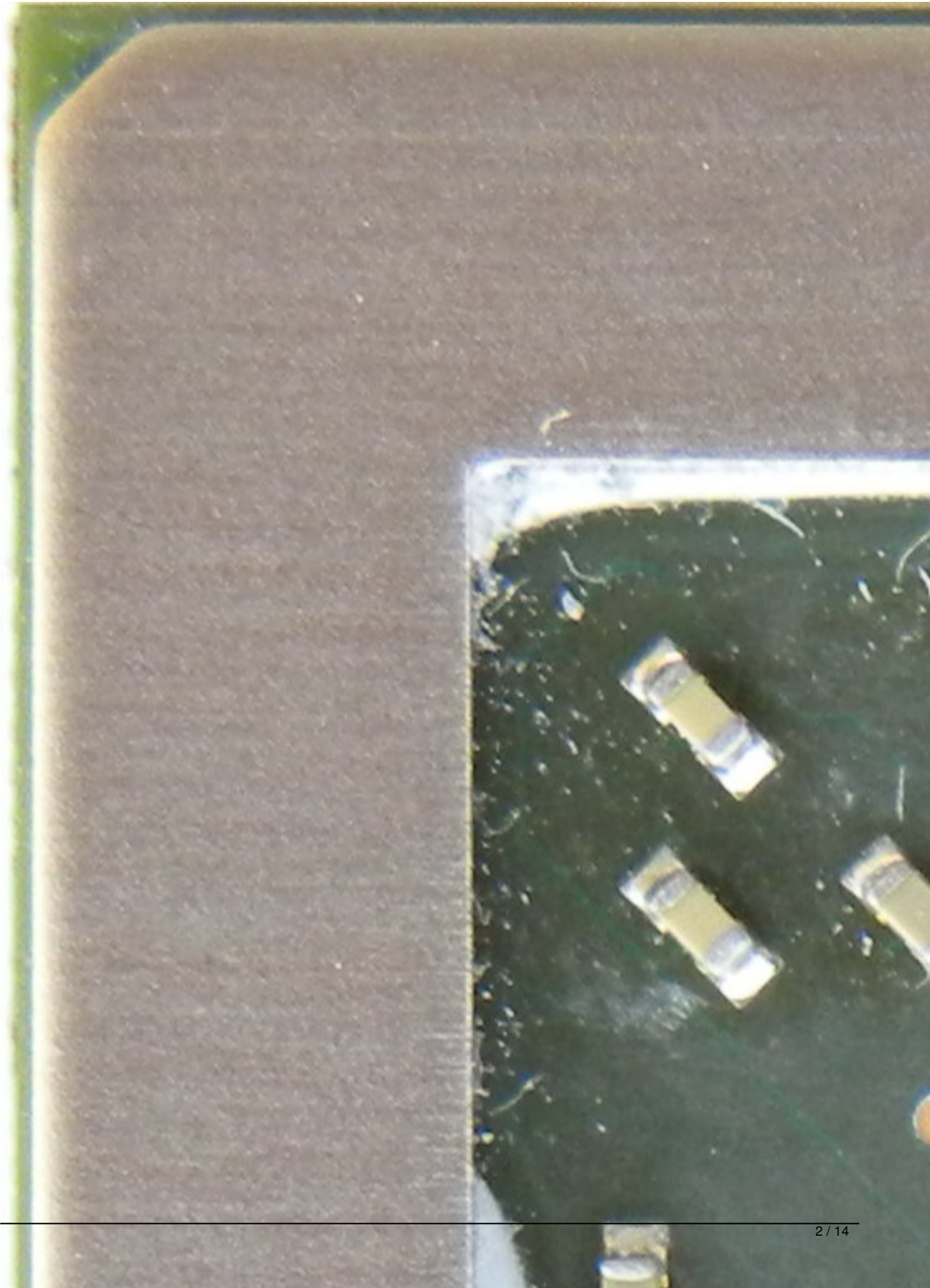
8320

MTexel/s

{webgallery}

ATi Radeon X850 XT

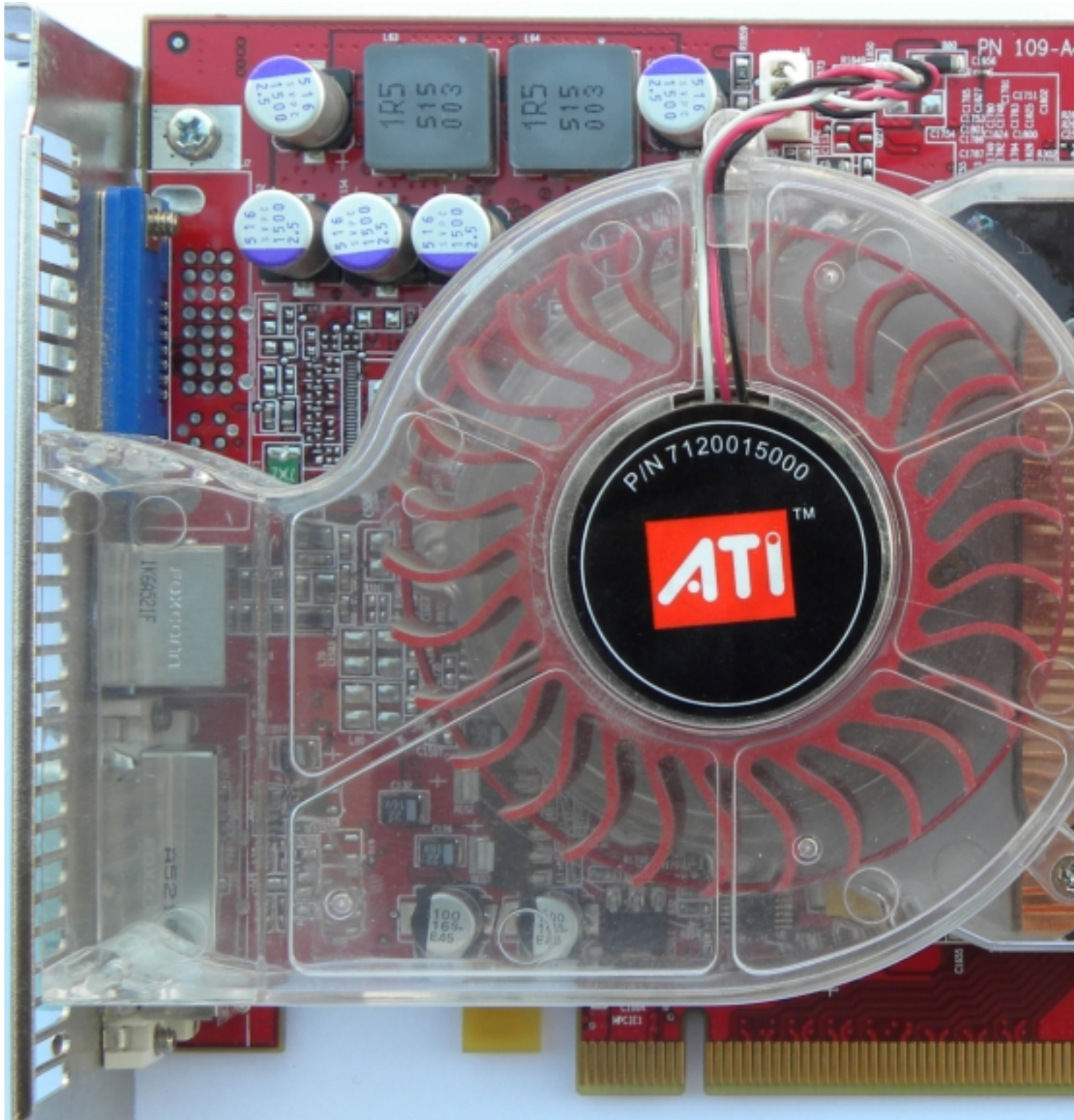
Written by Zaatharen
Friday, 28 March 2014 00:29



ATi Radeon X850 XT

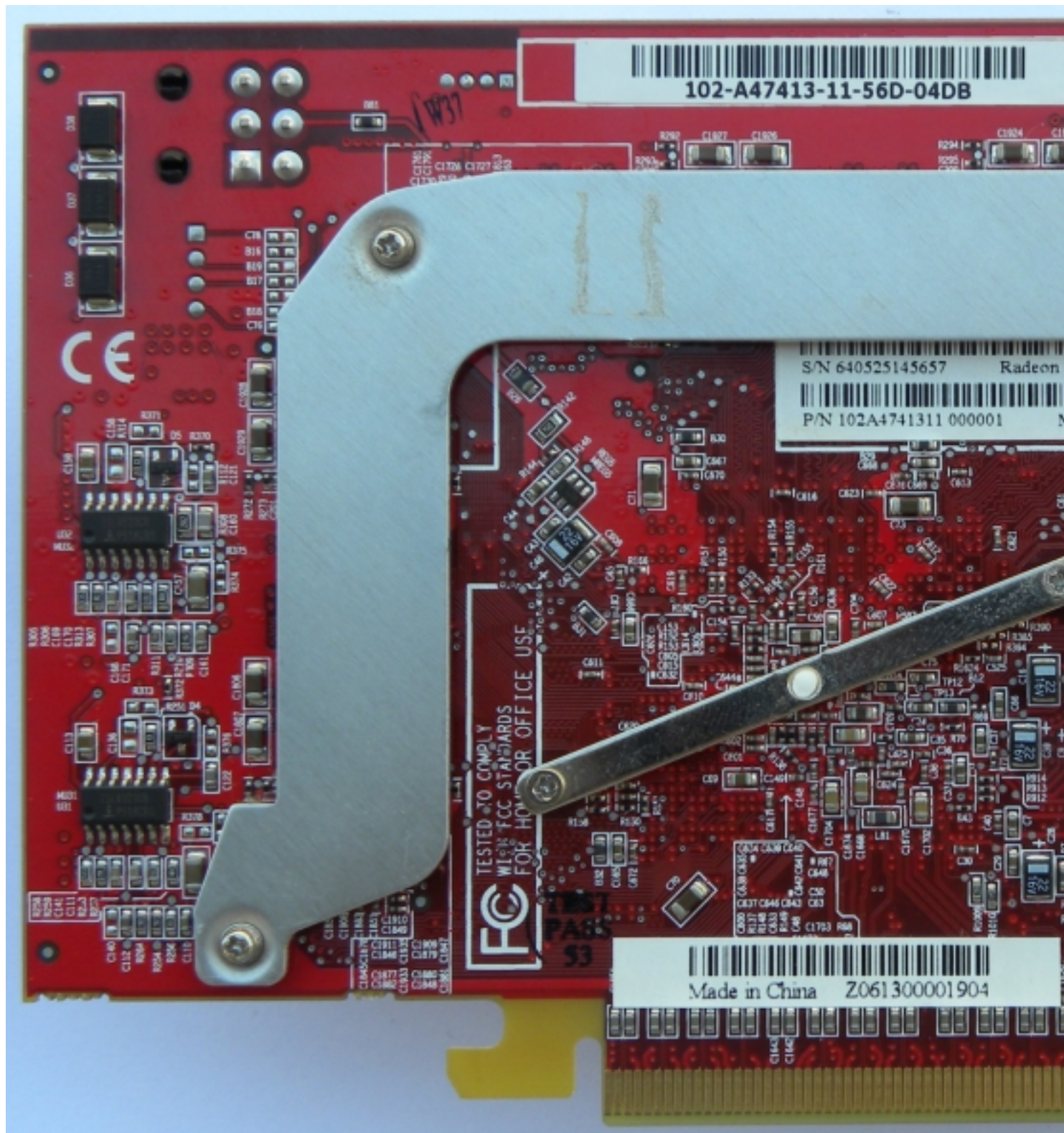
Written by Zaatharen

Friday, 28 March 2014 00:29



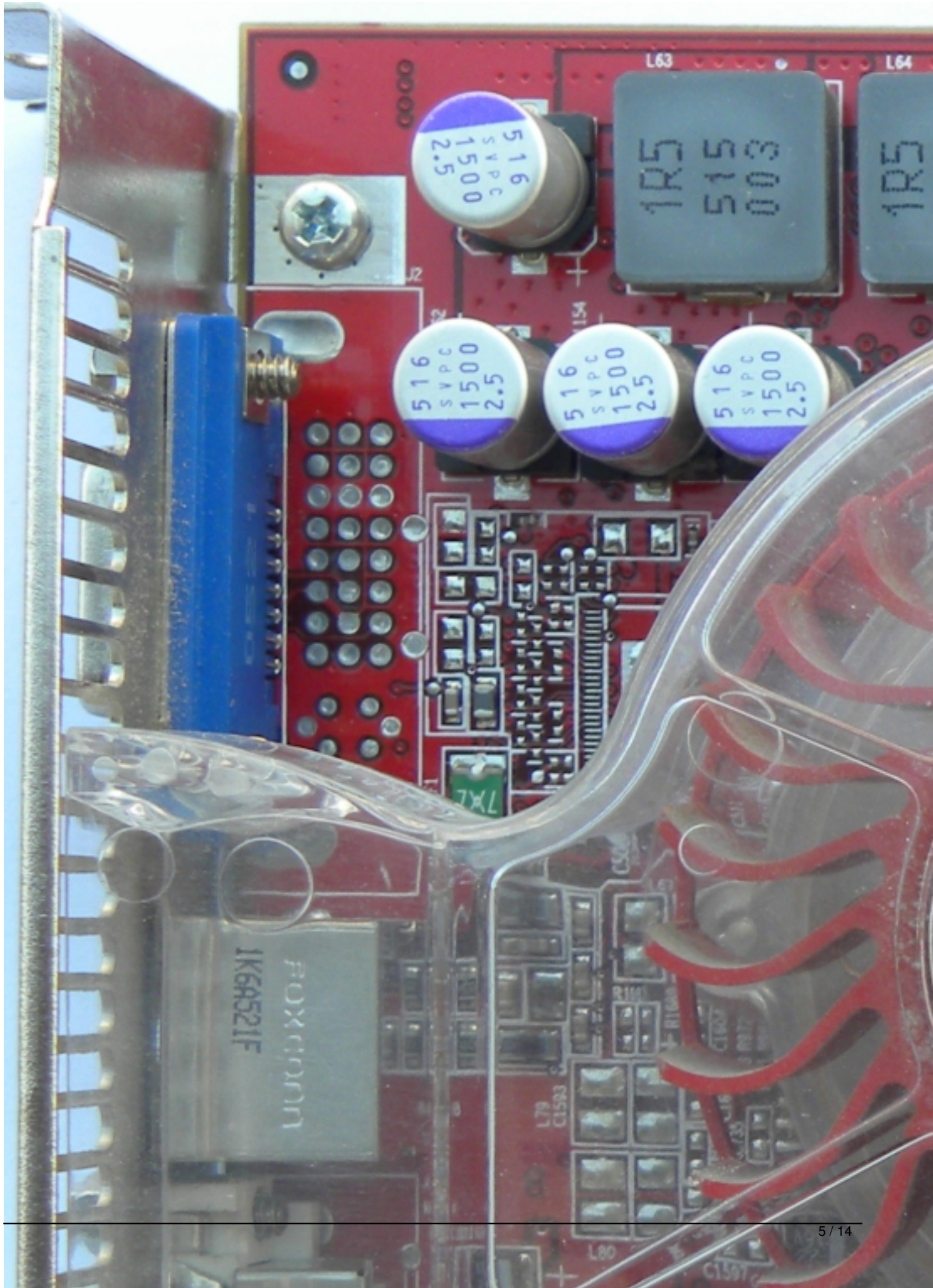
ATI Radeon X850 XT

Written by Zaatharen
Friday, 28 March 2014 00:29



ATi Radeon X850 XT

Written by Zaatharen
Friday, 28 March 2014 00:29



ATi Radeon X850 XT

Written by Zaatharen

Friday, 28 March 2014 00:29

Written by Zaatharen
Friday, 28 March 2014 00:29

Friday, 28 March 2014 00:29



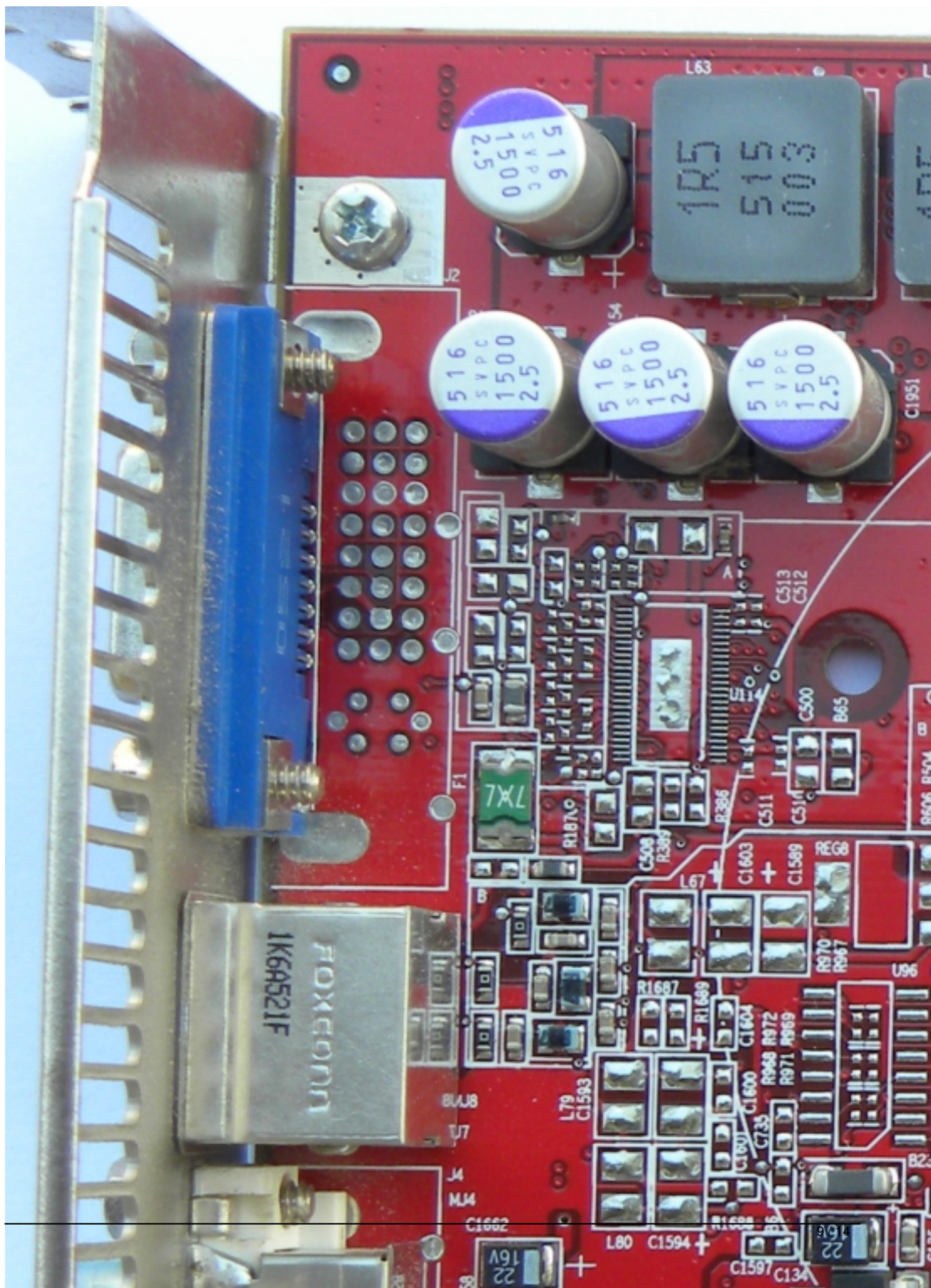
ATi Radeon X850 XT

Written by Zaatharen

Friday, 28 March 2014 00:29

ATi Radeon X850 XT

Written by Zaatharen
Friday, 28 March 2014 00:29

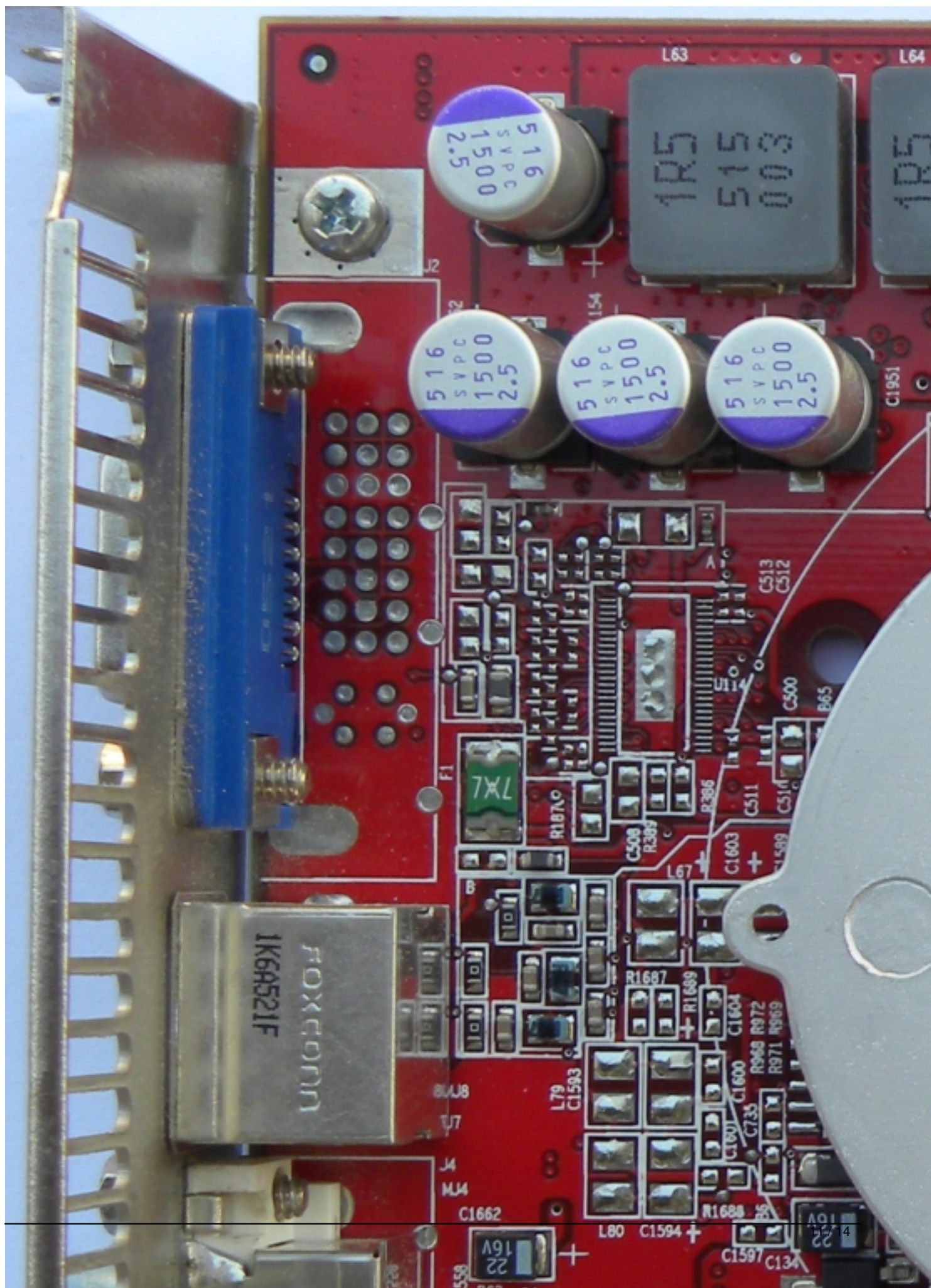


ATi Radeon X850 XT

Written by Zaatharen
Friday, 28 March 2014 00:29

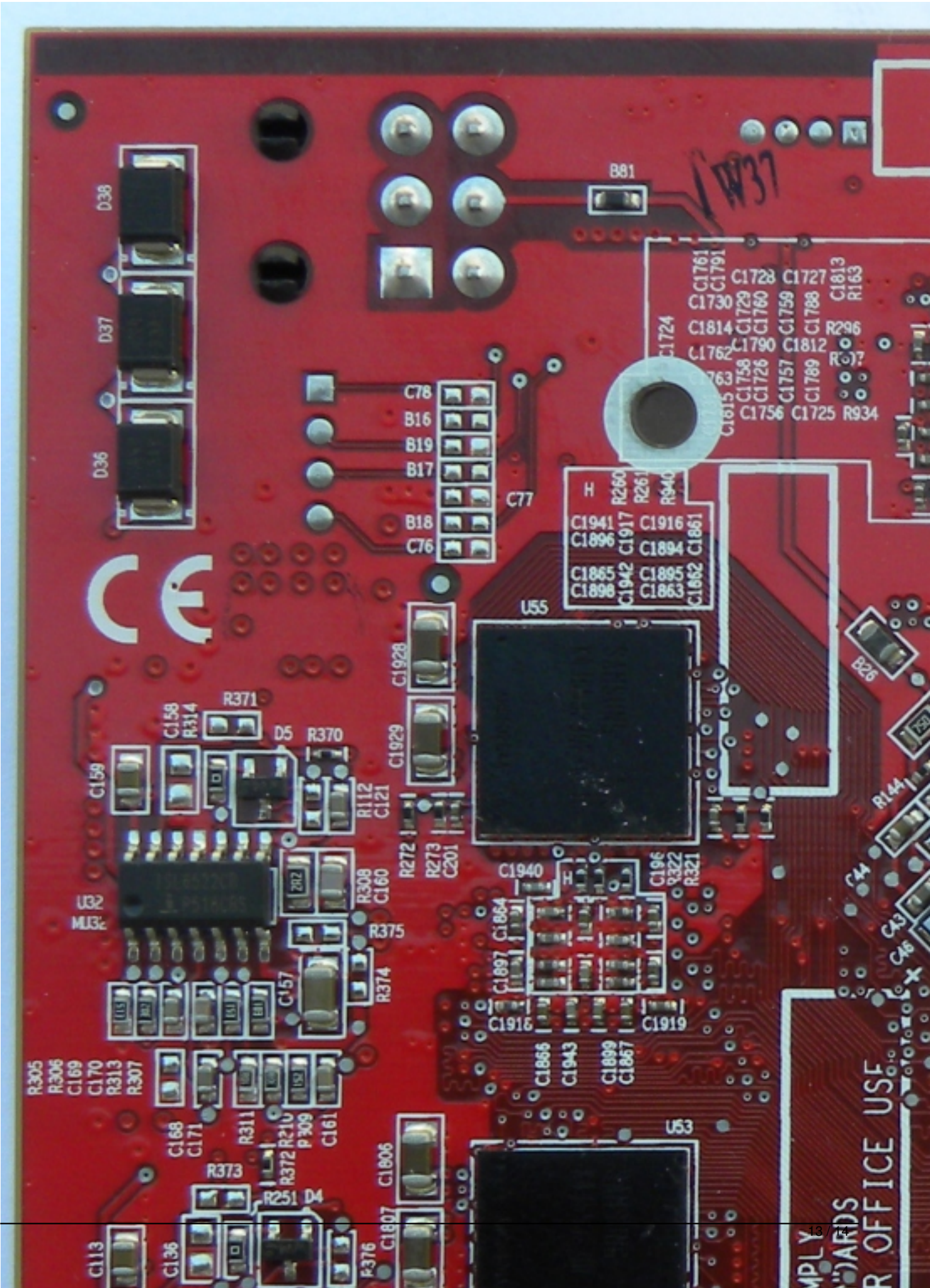
ATi Radeon X850 XT

Written by Zaatharen
Friday, 28 March 2014 00:29



ATI Radeon X850 XT

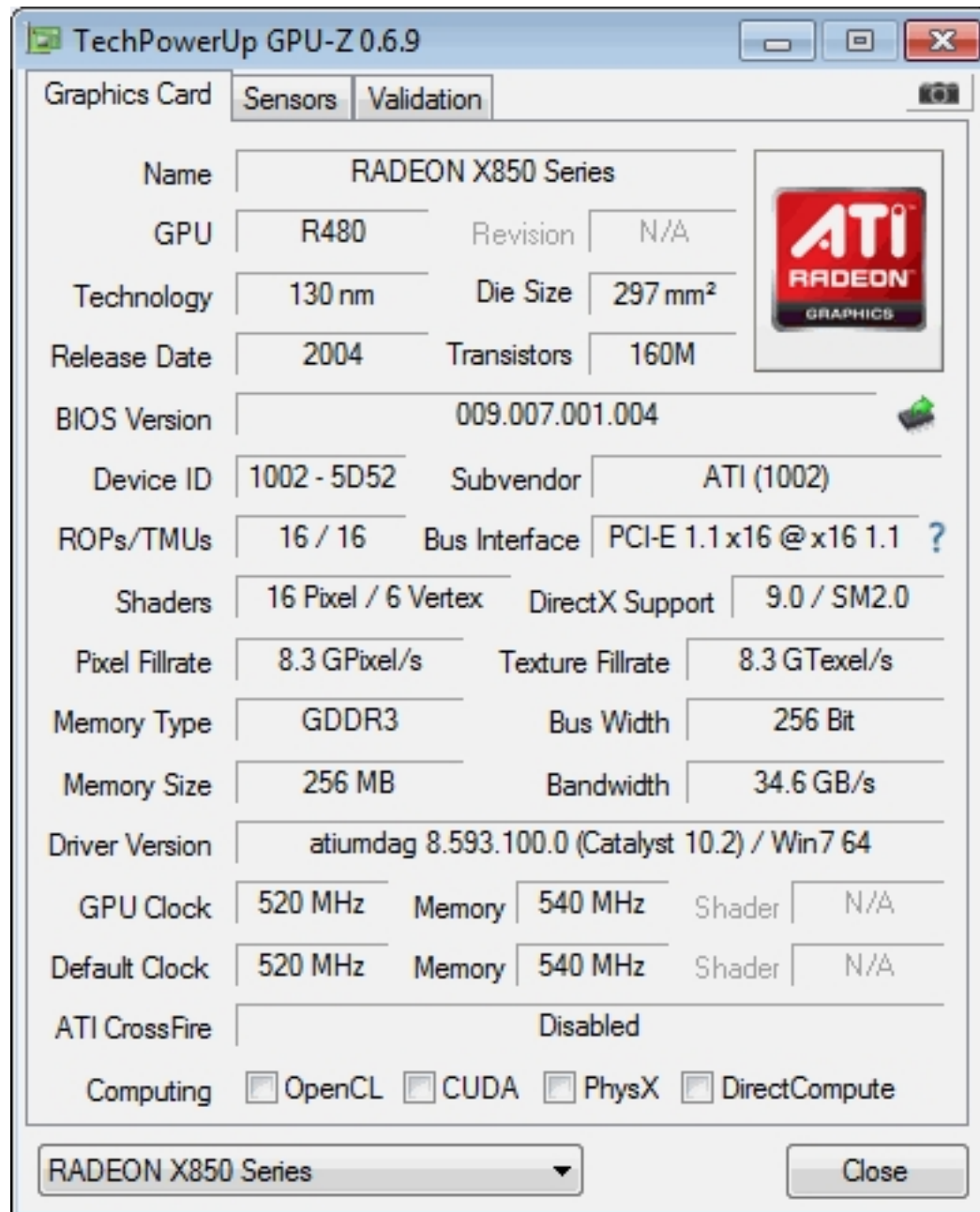
Written by Zaatharen
 Friday, 28 March 2014 00:29



ATi Radeon X850 XT

Written by Zaatharen

Friday, 28 March 2014 00:29



The screenshot shows the TechPowerUp GPU-Z 0.6.9 application window. The 'Graphics Card' tab is selected, displaying various specifications for the RADEON X850 Series GPU. The window includes a title bar, standard Windows window controls, and a tabbed interface. The specifications are organized into a grid-like layout with labels and values. An ATi Radeon Graphics logo is visible on the right side of the main panel. At the bottom, there is a dropdown menu showing 'RADEON X850 Series' and a 'Close' button.

Graphics Card			
Name	RADEON X850 Series		
GPU	R480	Revision	N/A
Technology	130 nm	Die Size	297 mm ²
Release Date	2004	Transistors	160M
BIOS Version	009.007.001.004		
Device ID	1002 - 5D52	Subvendor	ATI (1002)
ROPs/TMUs	16 / 16	Bus Interface	PCI-E 1.1 x16 @ x16 1.1 ?
Shaders	16 Pixel / 6 Vertex	DirectX Support	9.0 / SM2.0
Pixel Fillrate	8.3 GPixel/s	Texture Fillrate	8.3 GTexel/s
Memory Type	GDDR3	Bus Width	256 Bit
Memory Size	256 MB	Bandwidth	34.6 GB/s
Driver Version	atumdag 8.593.100.0 (Catalyst 10.2) / Win7 64		
GPU Clock	520 MHz	Memory	540 MHz
Default Clock	520 MHz	Memory	540 MHz
ATI CrossFire	Disabled		
Computing	<input type="checkbox"/> OpenCL <input type="checkbox"/> CUDA <input type="checkbox"/> PhysX <input type="checkbox"/> DirectCompute		

RADEON X850 Series [v] Close

{/webgallery}