

Chips&Technologies F64300

Written by palcal

Wednesday, 14 December 2011 22:47 - Last Updated Sunday, 15 July 2012 14:12



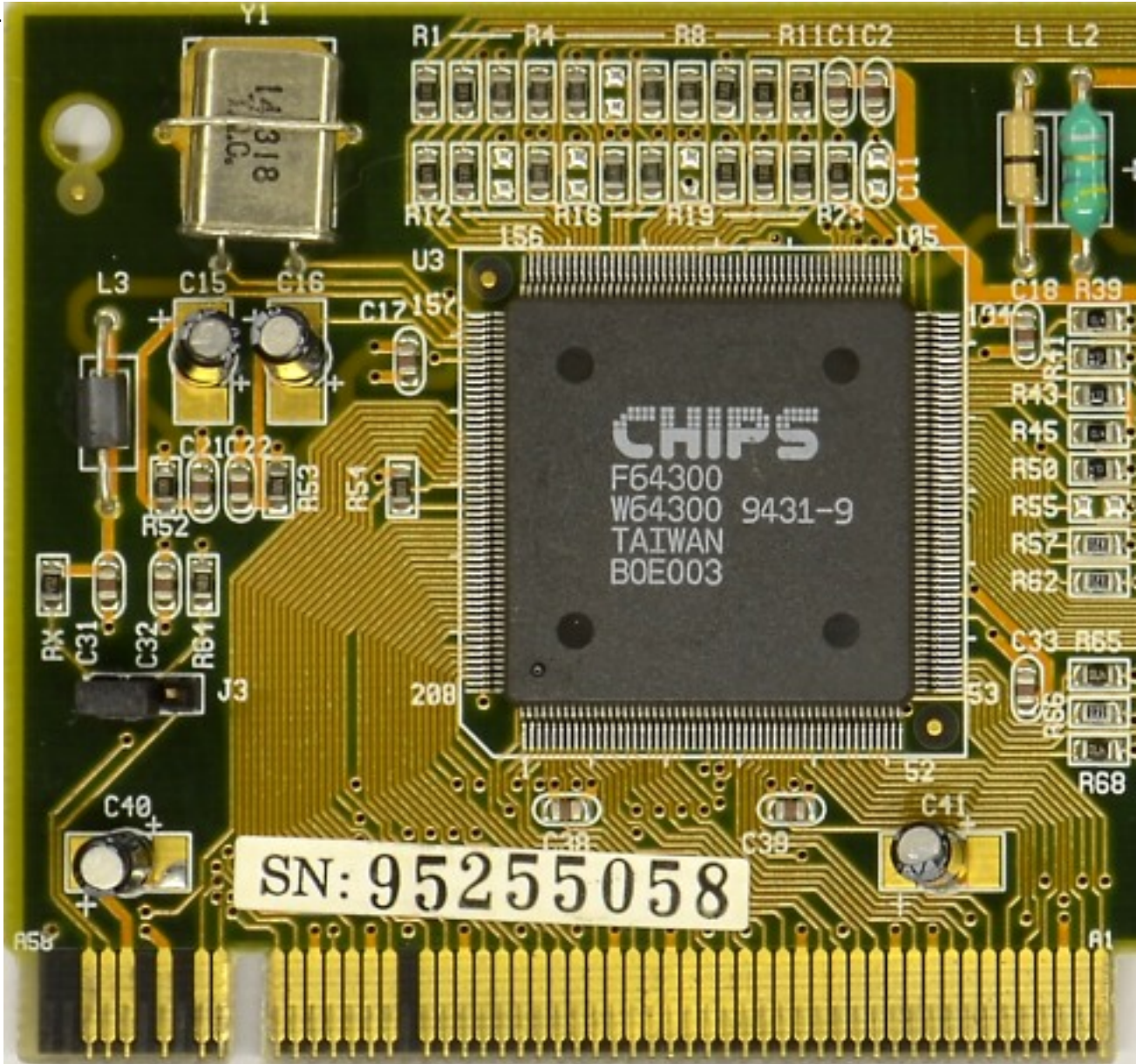
Core: F64300 ?MHz ?bit

Memory: 1MB (2MB max) DRAM ?MHz 32bit

Year: 1993 **Bus:** VL-Bus

Made: Taiwan **Links:** [datasheet](#)

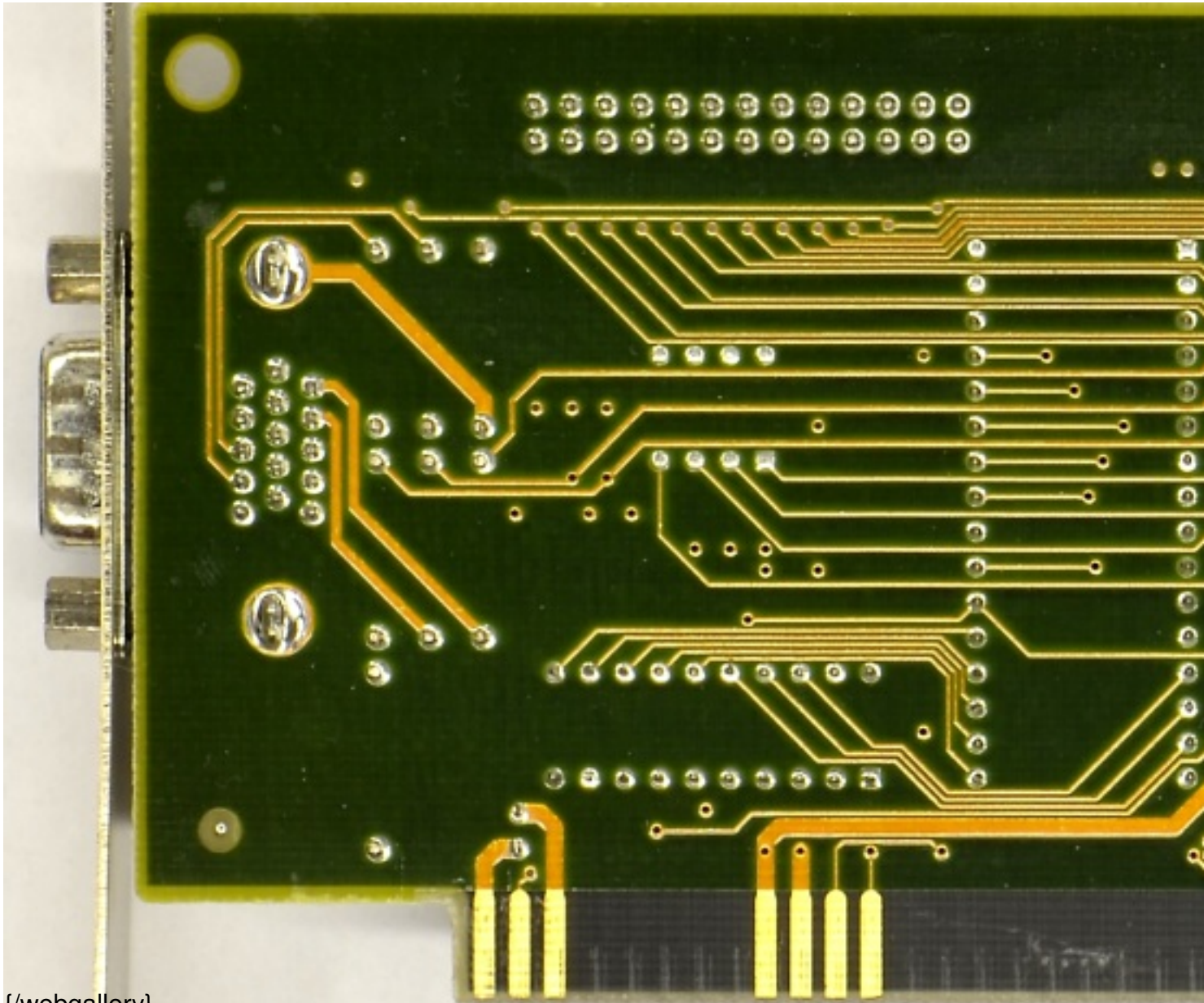
{webgallery}



Chips&Technologies F64300

Written by palcal

Wednesday, 14 December 2011 22:47 - Last Updated Sunday, 15 July 2012 14:12



{/webgallery}