

Chips&Technologies P82C434+P82C431

Written by Vlask

Friday, 11 June 2010 21:16 - Last Updated Monday, 13 February 2012 22:40



Core: P82C434+P82C431 ?MHz ?bit

Memory: 256kB ?MHz ?bit

Year: 1985 **Bus:** ISA 8bit

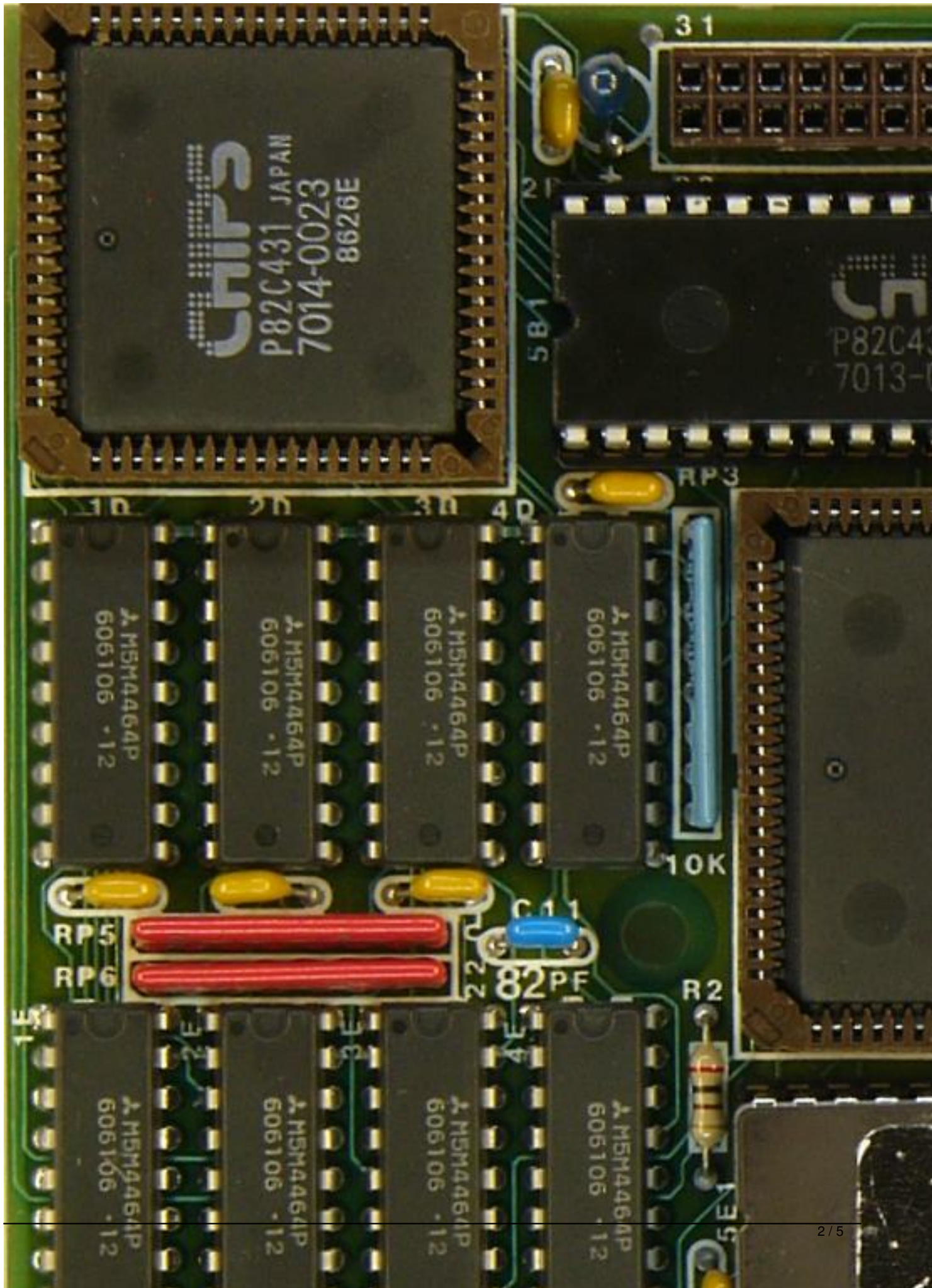
Made: Japan **Links:** [Pdf](#)

{webgallery}

Chips&Technologies P82C434+P82C431

Written by Vlask

Friday, 11 June 2010 21:16 - Last Updated Monday, 13 February 2012 22:40



Chips&Technologies P82C434+P82C431

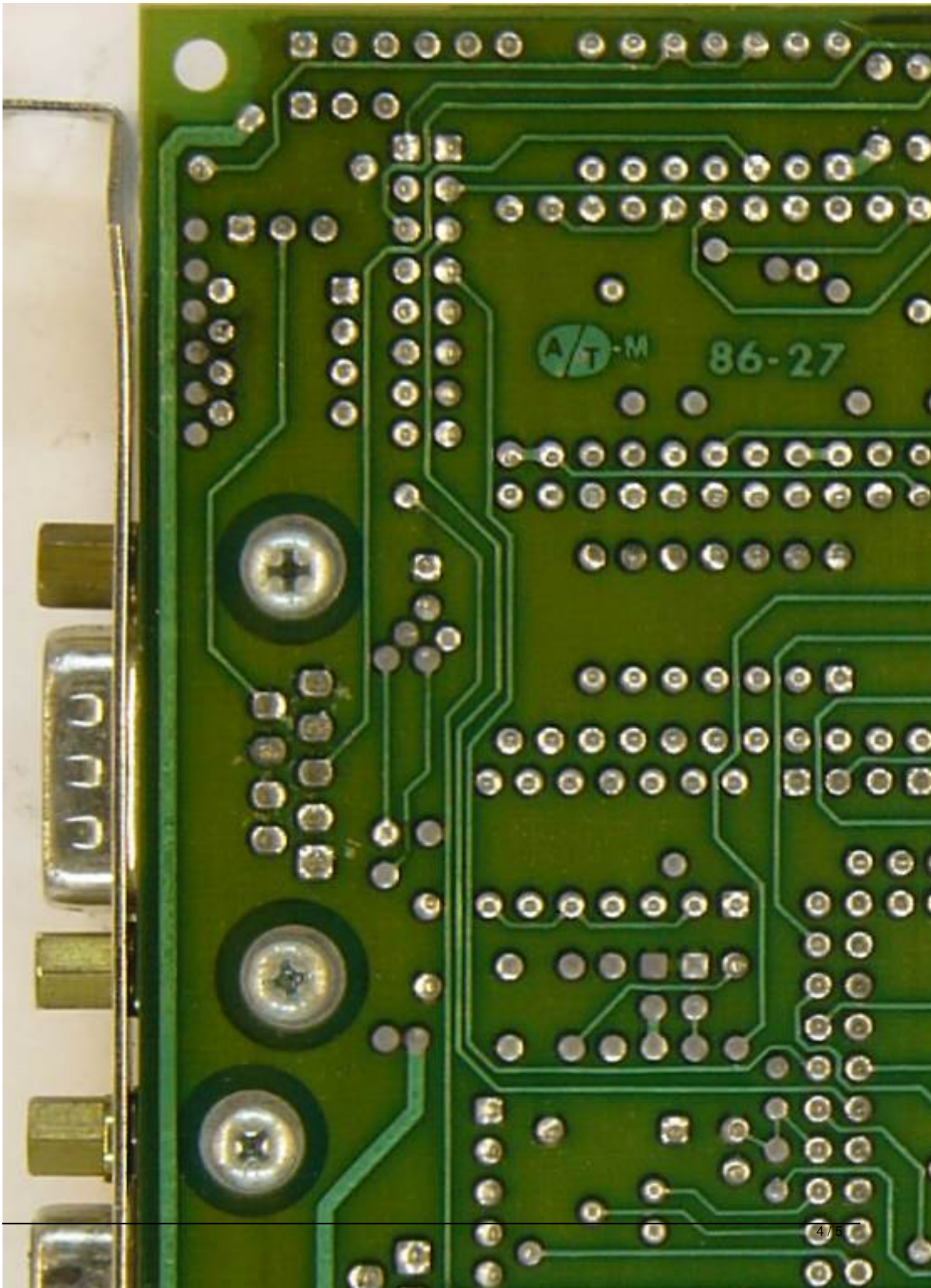
Written by Vlask

Friday, 11 June 2010 21:16 - Last Updated Monday, 13 February 2012 22:40

Chips&Technologies P82C434+P82C431

Written by Vlask

Friday, 11 June 2010 21:16 - Last Updated Monday, 13 February 2012 22:40



Chips&Technologies P82C434+P82C431

Written by Vlask

Friday, 11 June 2010 21:16 - Last Updated Monday, 13 February 2012 22:40

{/webgallery}