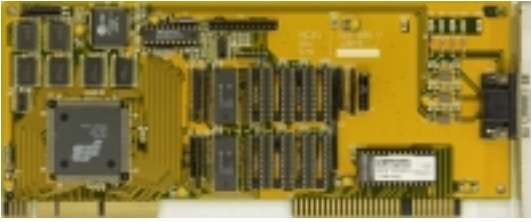


S3 P86C805

Written by Vlask

Wednesday, 02 June 2010 21:35 - Last Updated Tuesday, 24 April 2012 21:14



Core: P86C805 ?MHz 32bit

Memory: 1MB DRAM ?MHz ?bit

Year: 1992 **Bus:** VL-Bus

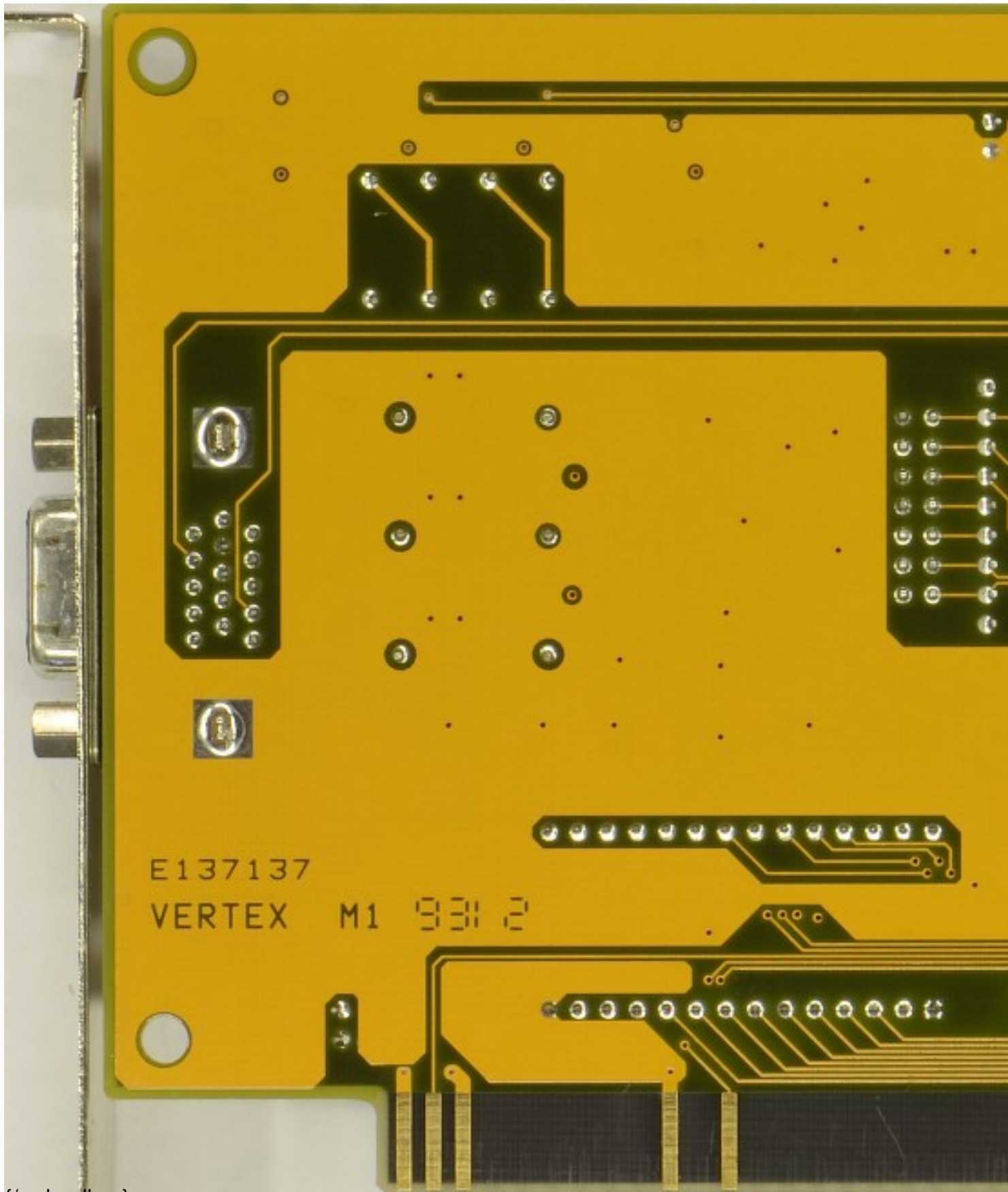
Made: Japan **Links:** [Gbooks](#)

{webgallery}

S3 P86C805

Written by Vlask

Wednesday, 02 June 2010 21:35 - Last Updated Tuesday, 24 April 2012 21:14



{/webgallery}