

S3 86C775 Trio64V2/DX

Written by Vlask

Tuesday, 13 July 2010 09:18 - Last Updated Sunday, 15 April 2012 21:16



Core: 86C775 50-65MHz 64bit

Memory: 1-2MB FPM/EDO 50-65MHz 64bit

Year: 1996 **Bus:** PCI

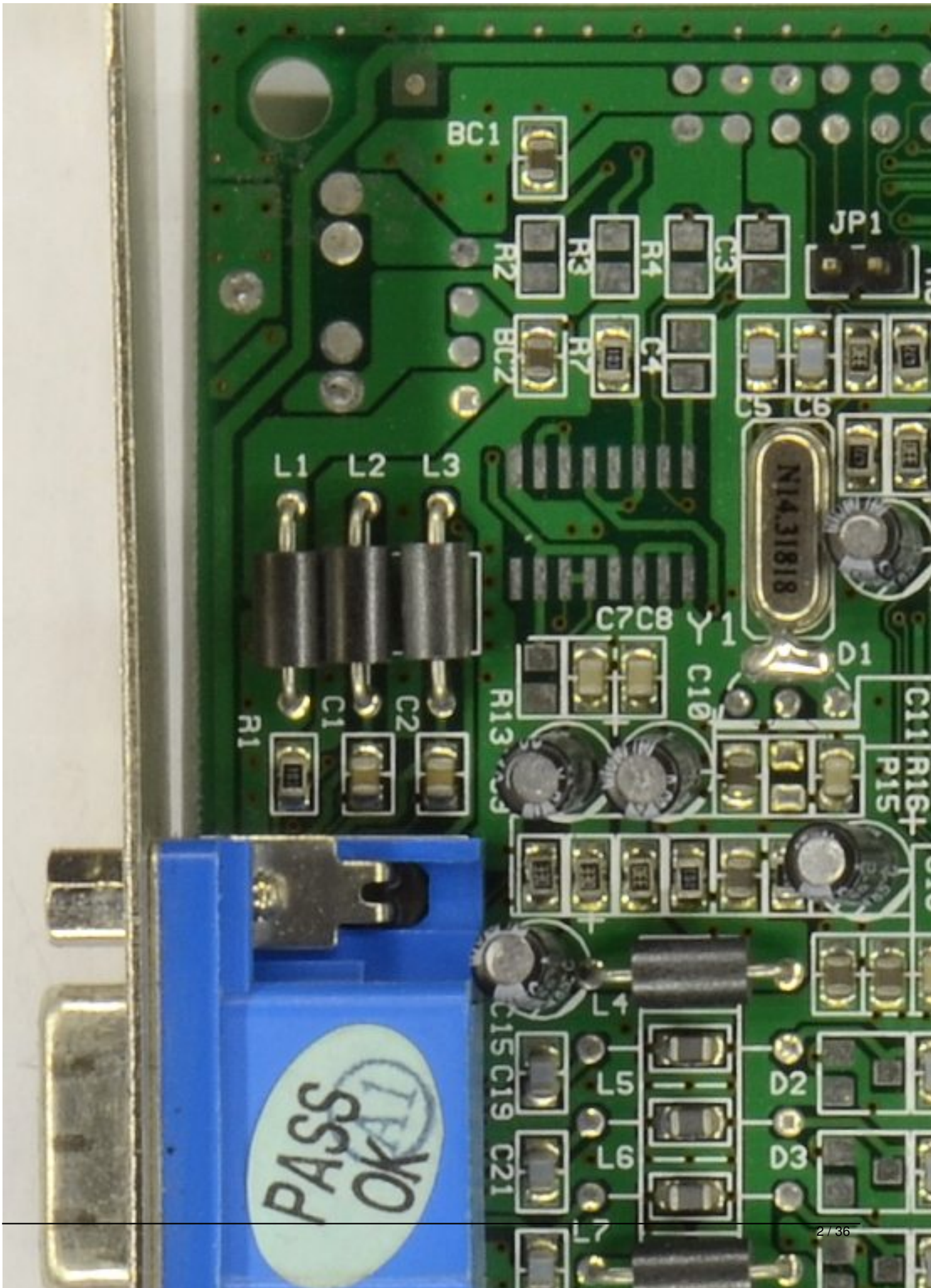
Made: Taiwan **Links:** [Pdf](#)

{webgallery}

S3 86C775 Trio64V2/DX

Written by Vlask

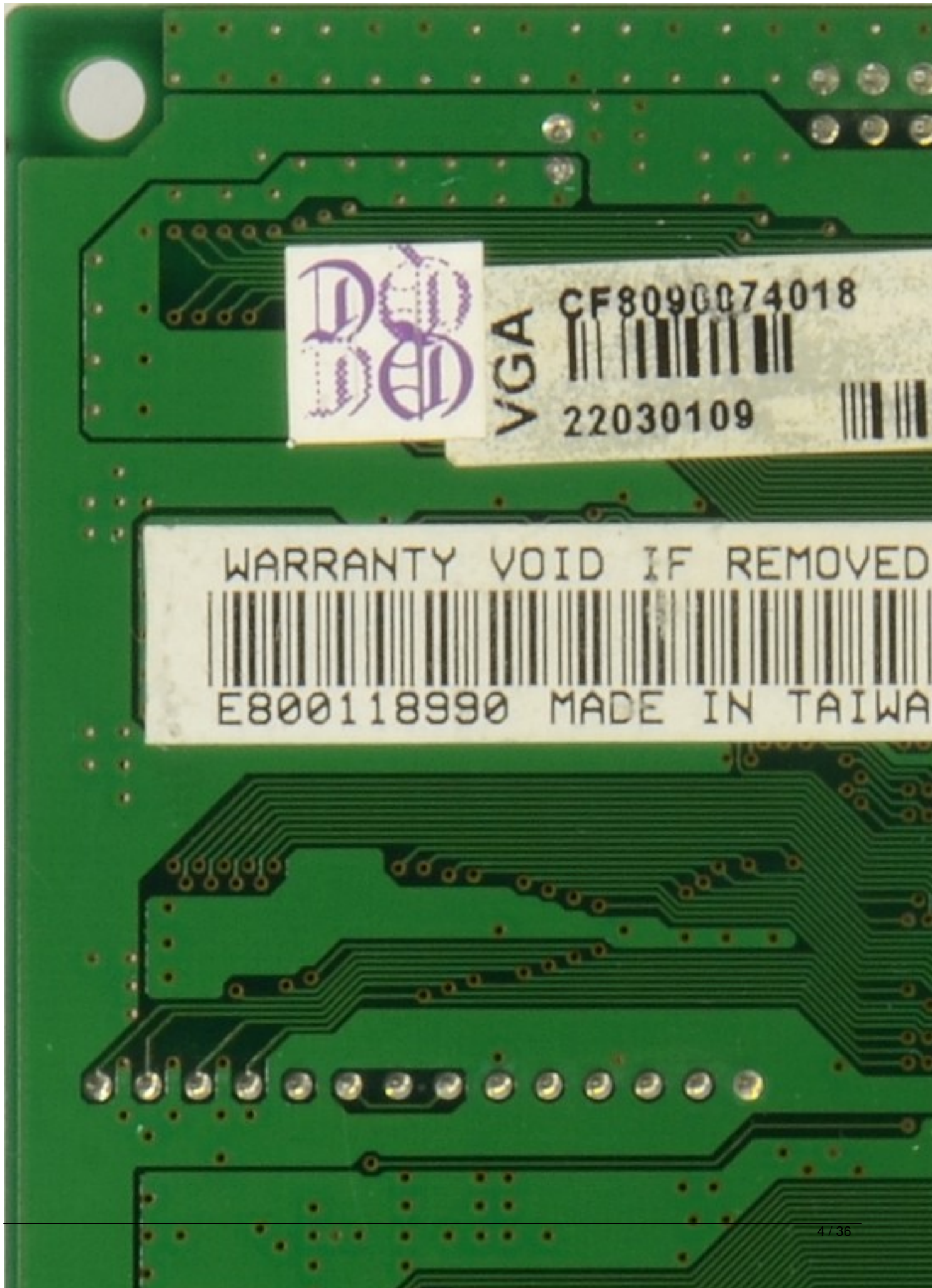
Tuesday, 13 July 2010 09:18 - Last Updated Sunday, 15 April 2012 21:16



S3 86C775 Trio64V2/DX

Written by Vlask

Tuesday, 13 July 2010 09:18 - Last Updated Sunday, 15 April 2012 21:16



VGA

CF8090074018



22030109



WARRANTY VOID IF REMOVED



E800118990 MADE IN TAIWA

S3 86C775 Trio64V2/DX

Written by Vlask

Tuesday, 13 July 2010 09:18 - Last Updated Sunday, 15 April 2012 21:16



S3 86C775 Trio64V2/DX

Written by Vlask

Tuesday, 13 July 2010 09:18 - Last Updated Sunday, 15 April 2012 21:16

GG GB-D 94V-0 9750

WARRANTY VOID IF REMOVED



A712173640

S3 86C775 Trio64V2/DX

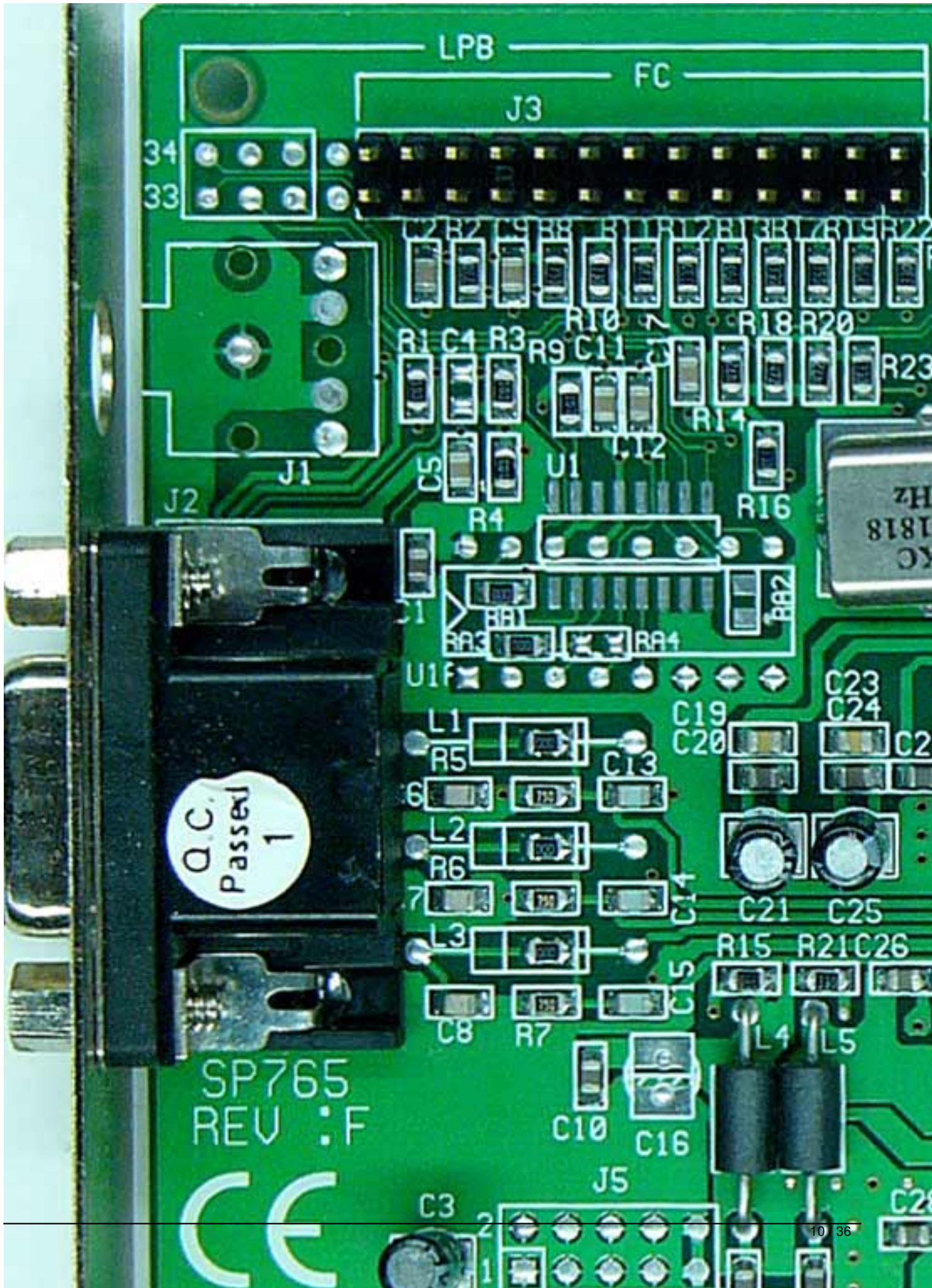
Written by Vlask

Tuesday, 13 July 2010 09:18 - Last Updated Sunday, 15 April 2012 21:16

S3 86C775 Trio64V2/DX

Written by Vlask

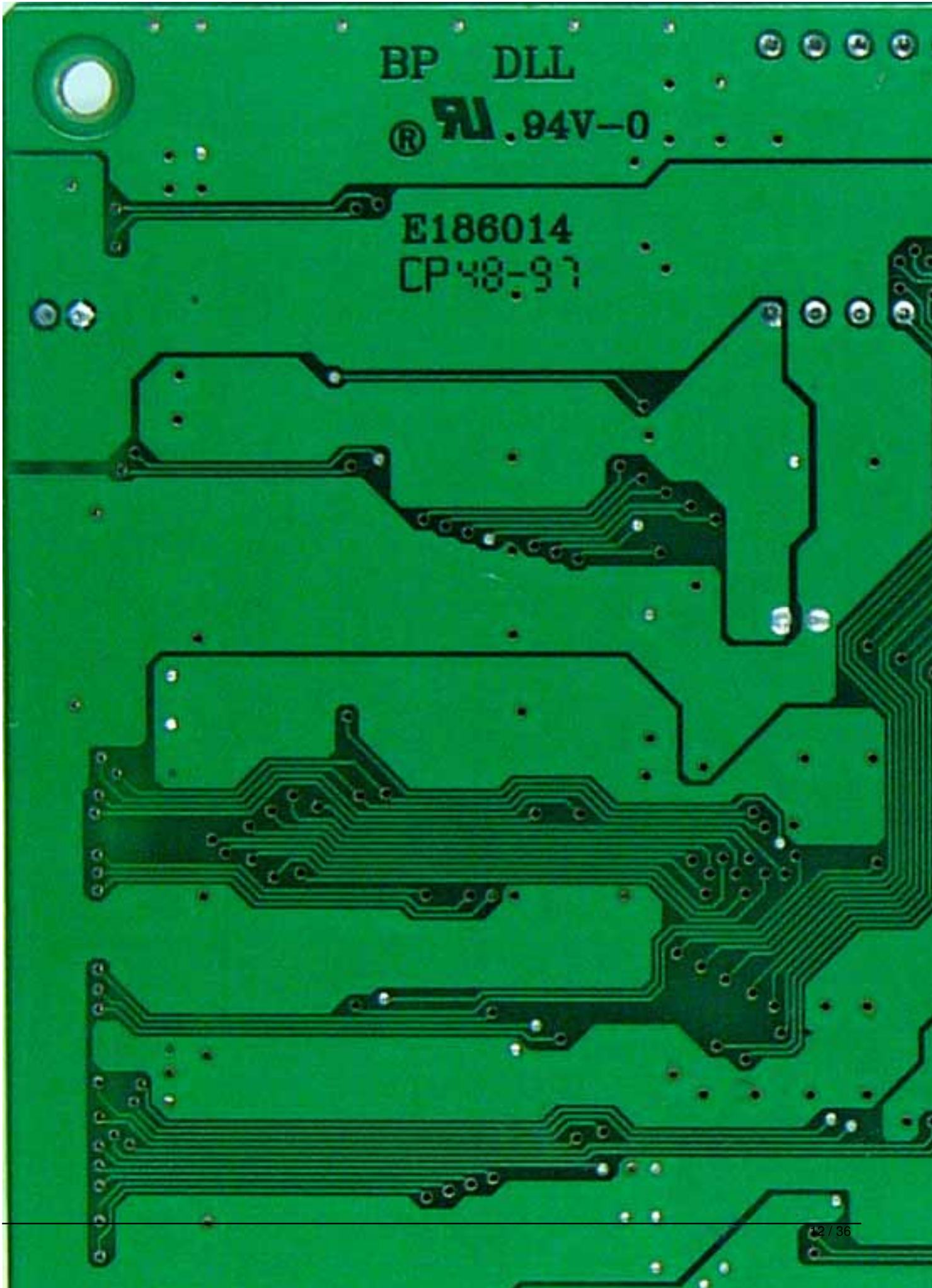
Tuesday, 13 July 2010 09:18 - Last Updated Sunday, 15 April 2012 21:16



S3 86C775 Trio64V2/DX

Written by Vlask

Tuesday, 13 July 2010 09:18 - Last Updated Sunday, 15 April 2012 21:16



S3 86C775 Trio64V2/DX

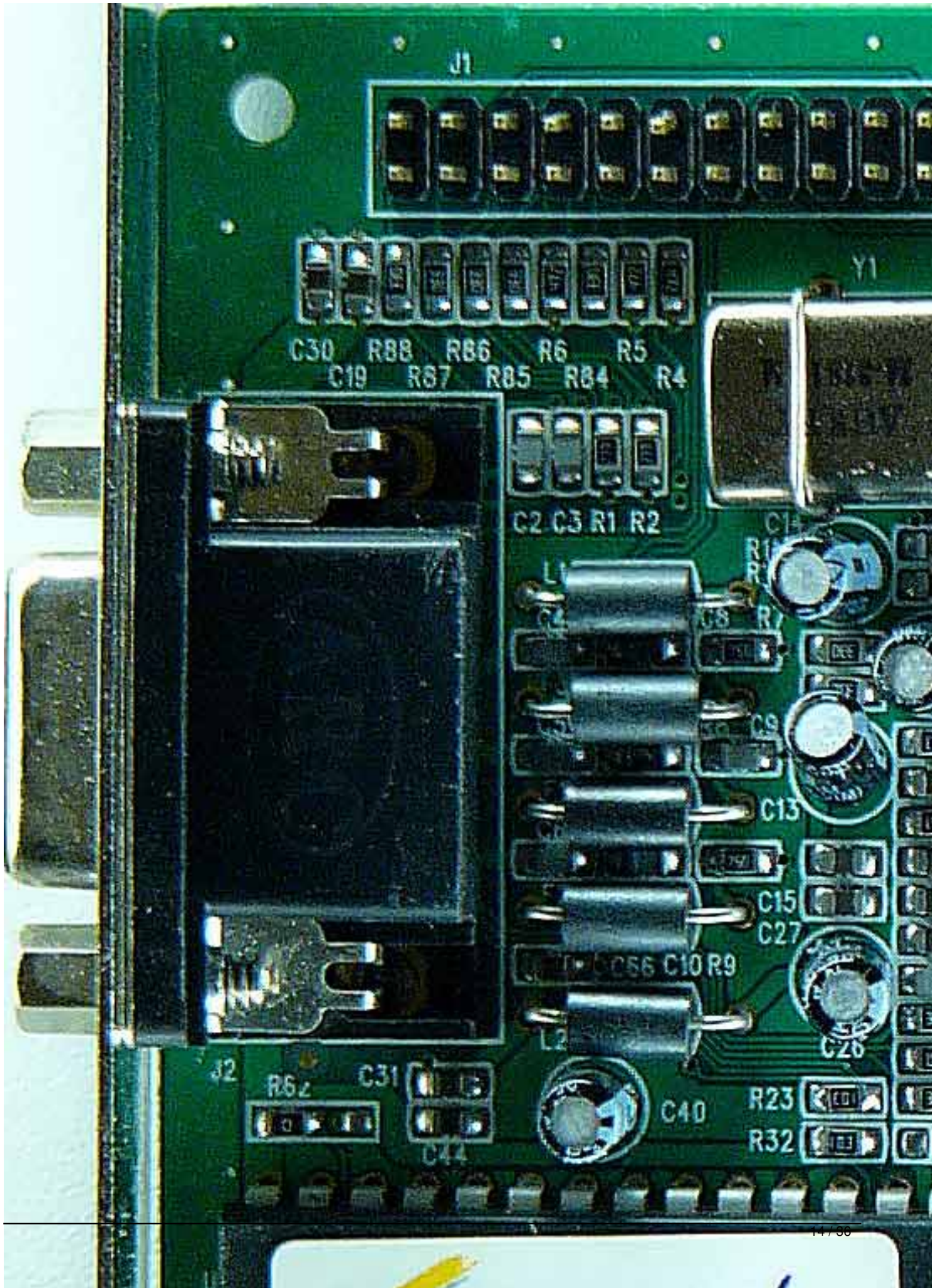
Written by Vlask

Tuesday, 13 July 2010 09:18 - Last Updated Sunday, 15 April 2012 21:16

S3 86C775 Trio64V2/DX

Written by Vlask

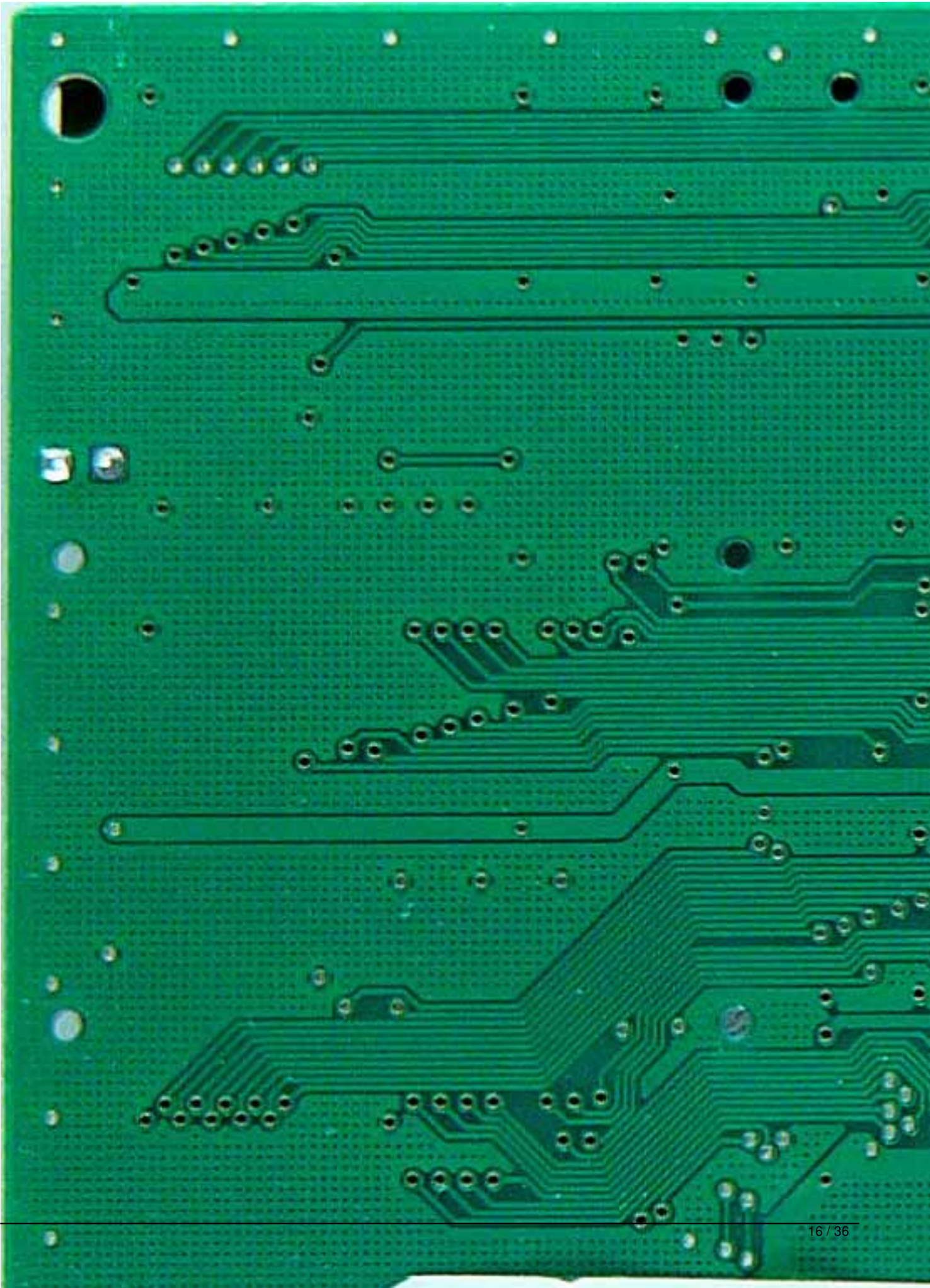
Tuesday, 13 July 2010 09:18 - Last Updated Sunday, 15 April 2012 21:16



S3 86C775 Trio64V2/DX

Written by Vlask

Tuesday, 13 July 2010 09:18 - Last Updated Sunday, 15 April 2012 21:16



S3 86C775 Trio64V2/DX

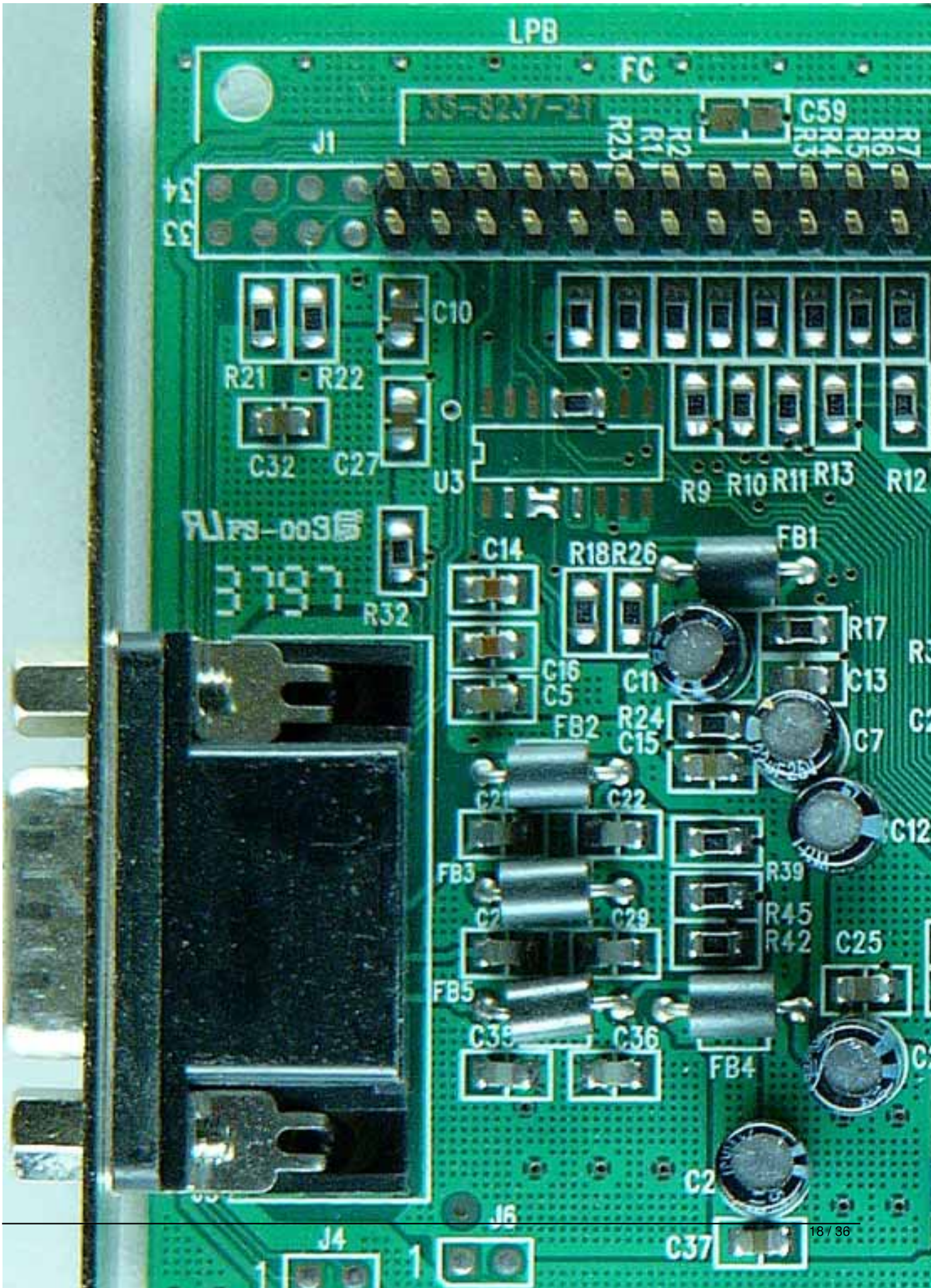
Written by Vlask

Tuesday, 13 July 2010 09:18 - Last Updated Sunday, 15 April 2012 21:16

S3 86C775 Trio64V2/DX

Written by Vlask

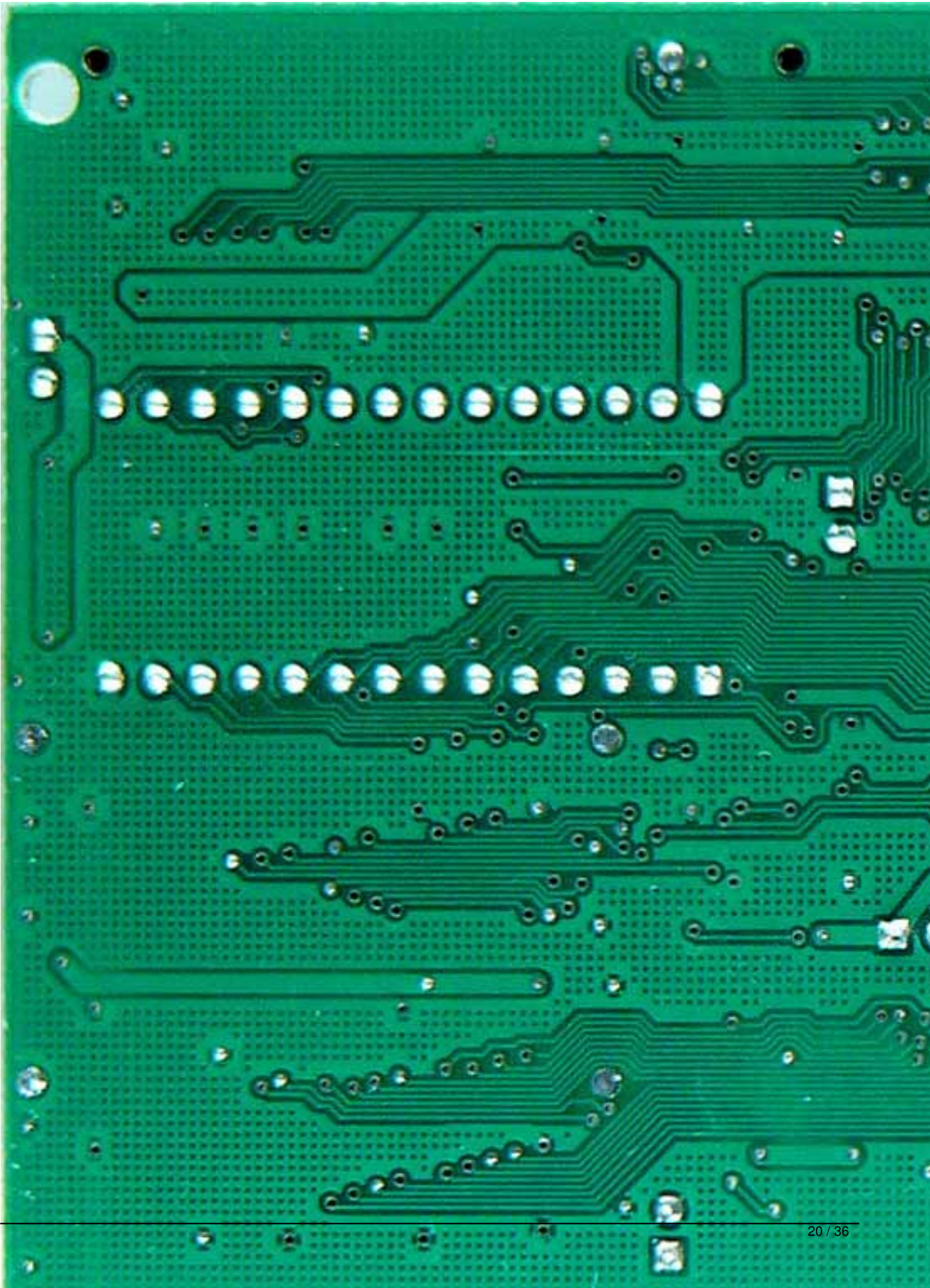
Tuesday, 13 July 2010 09:18 - Last Updated Sunday, 15 April 2012 21:16



S3 86C775 Trio64V2/DX

Written by Vlask

Tuesday, 13 July 2010 09:18 - Last Updated Sunday, 15 April 2012 21:16



S3 86C775 Trio64V2/DX

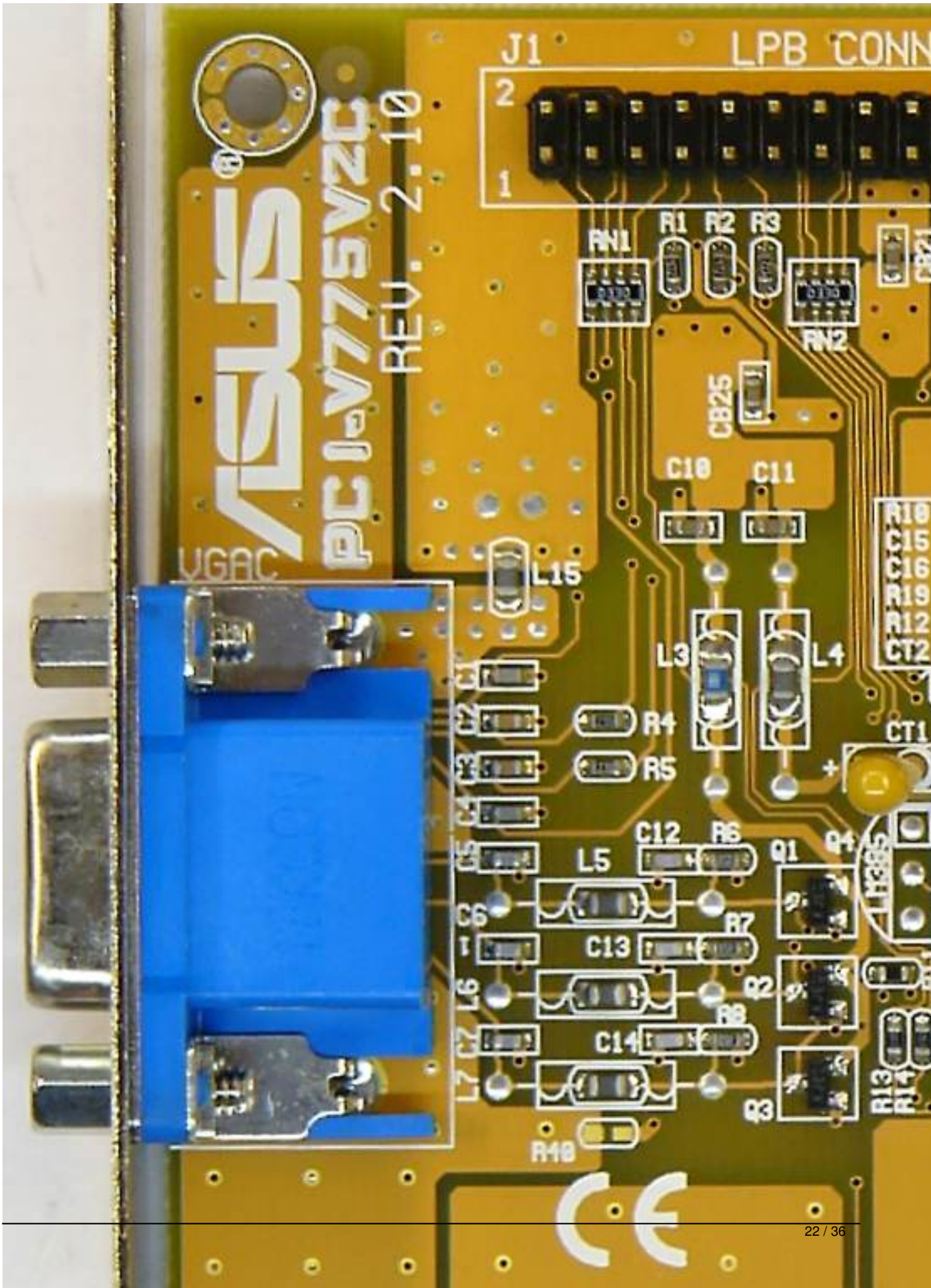
Written by Vlask

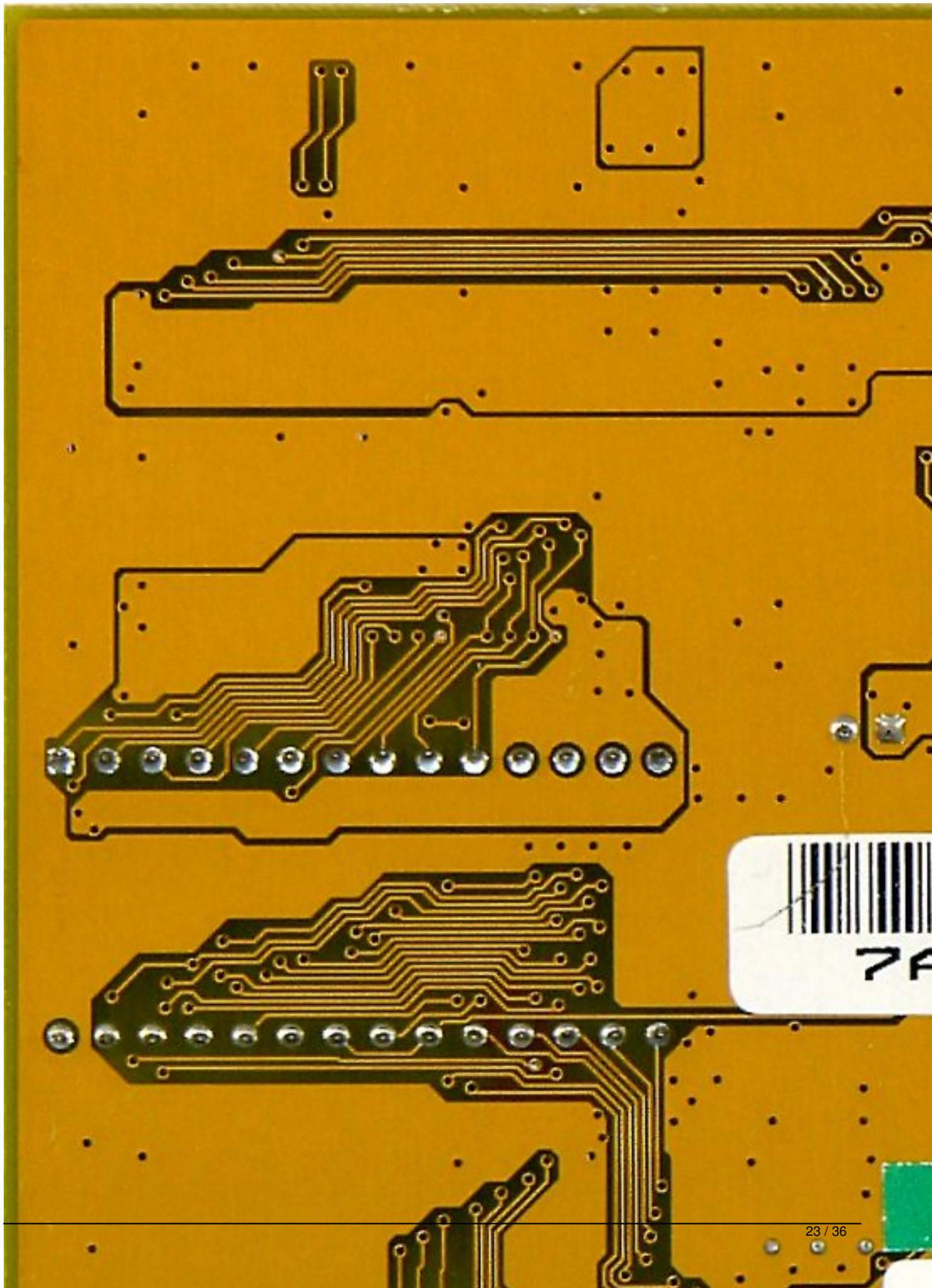
Tuesday, 13 July 2010 09:18 - Last Updated Sunday, 15 April 2012 21:16

S3 86C775 Trio64V2/DX

Written by Vlask

Tuesday, 13 July 2010 09:18 - Last Updated Sunday, 15 April 2012 21:16

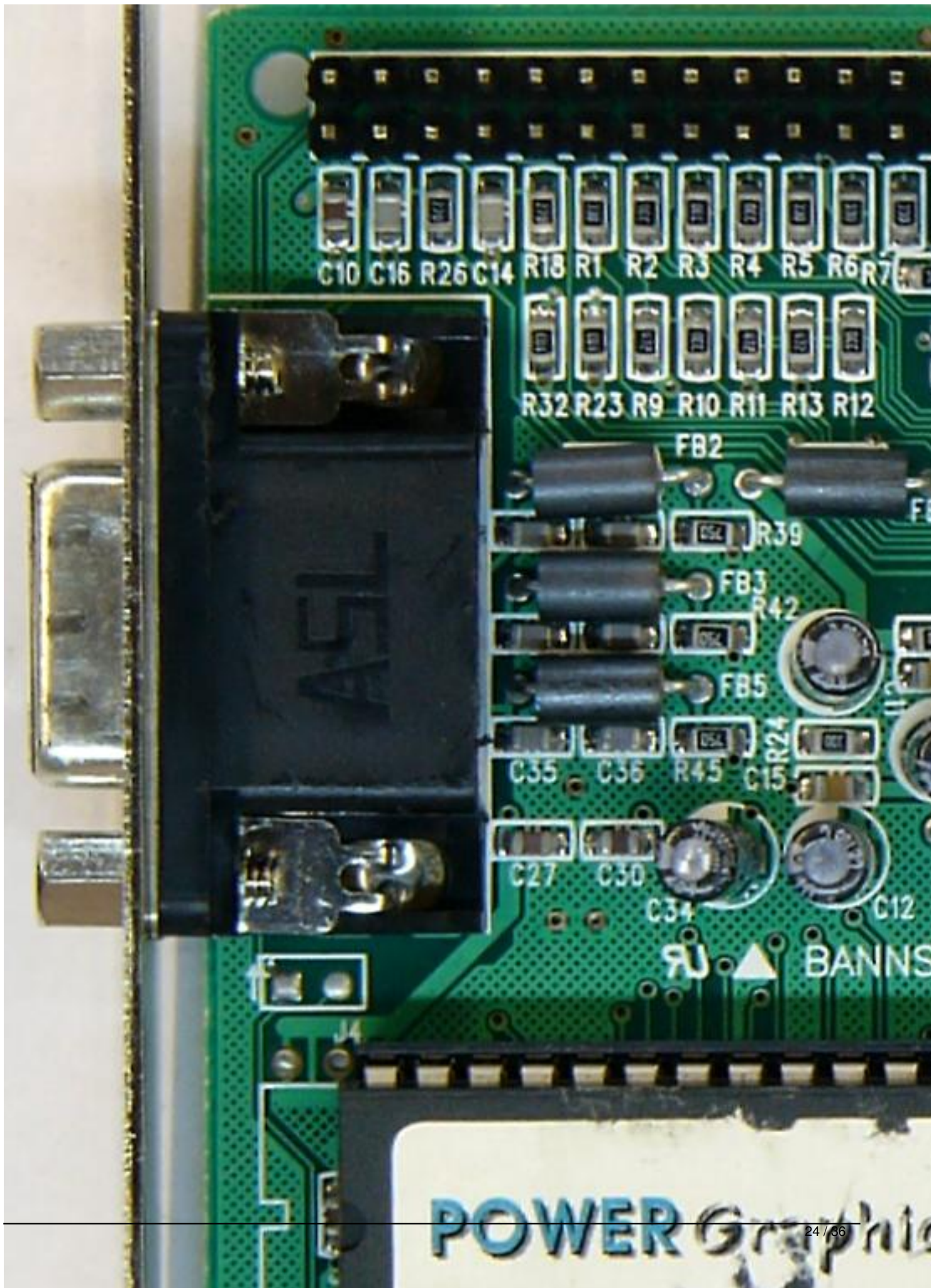




S3 86C775 Trio64V2/DX

Written by Vlask

Tuesday, 13 July 2010 09:18 - Last Updated Sunday, 15 April 2012 21:16



S3 86C775 Trio64V2/DX

Written by Vlask

Tuesday, 13 July 2010 09:18 - Last Updated Sunday, 15 April 2012 21:16



10
QC P

WARRANTY

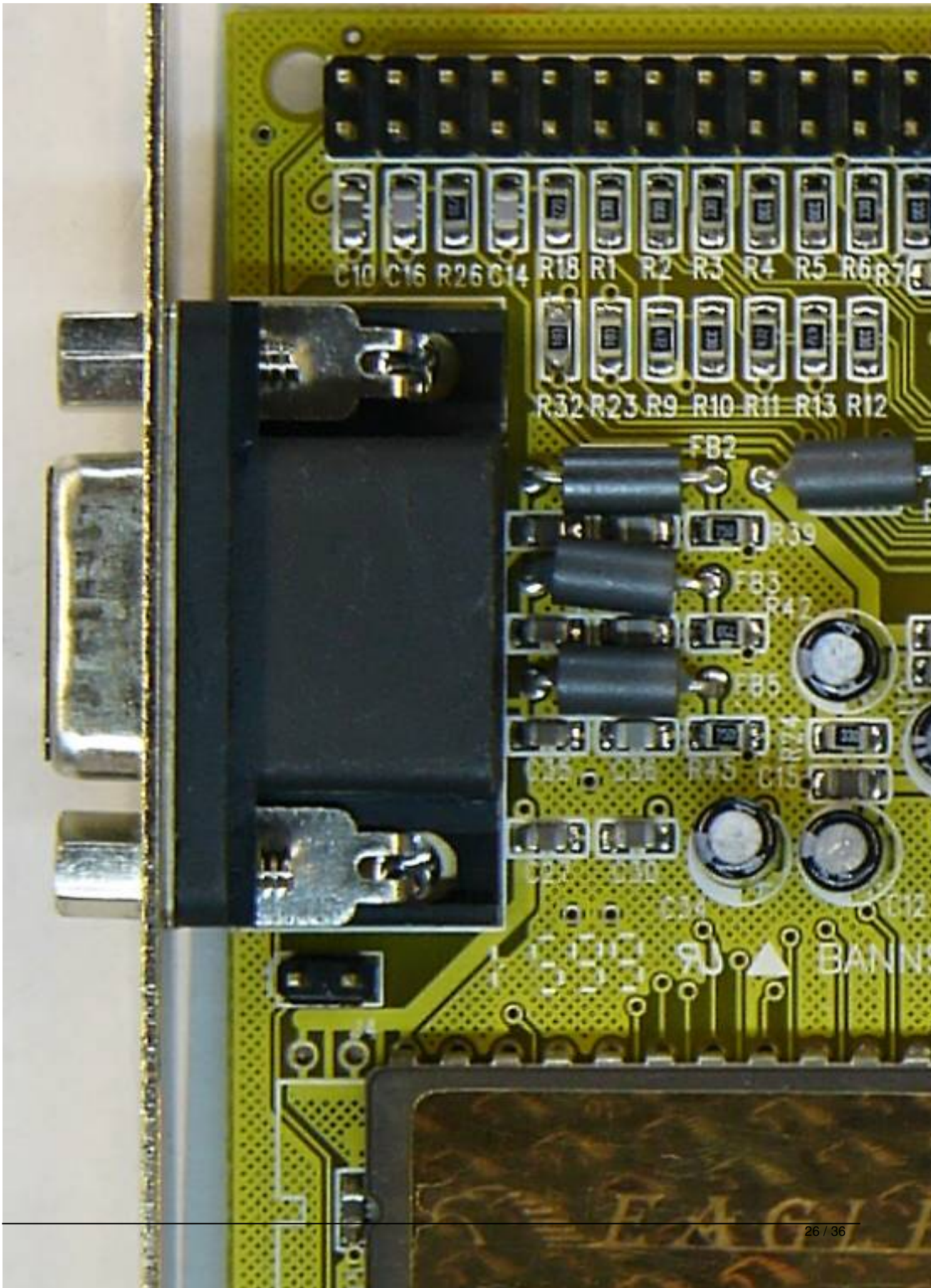
98	1	2
/99	7	8

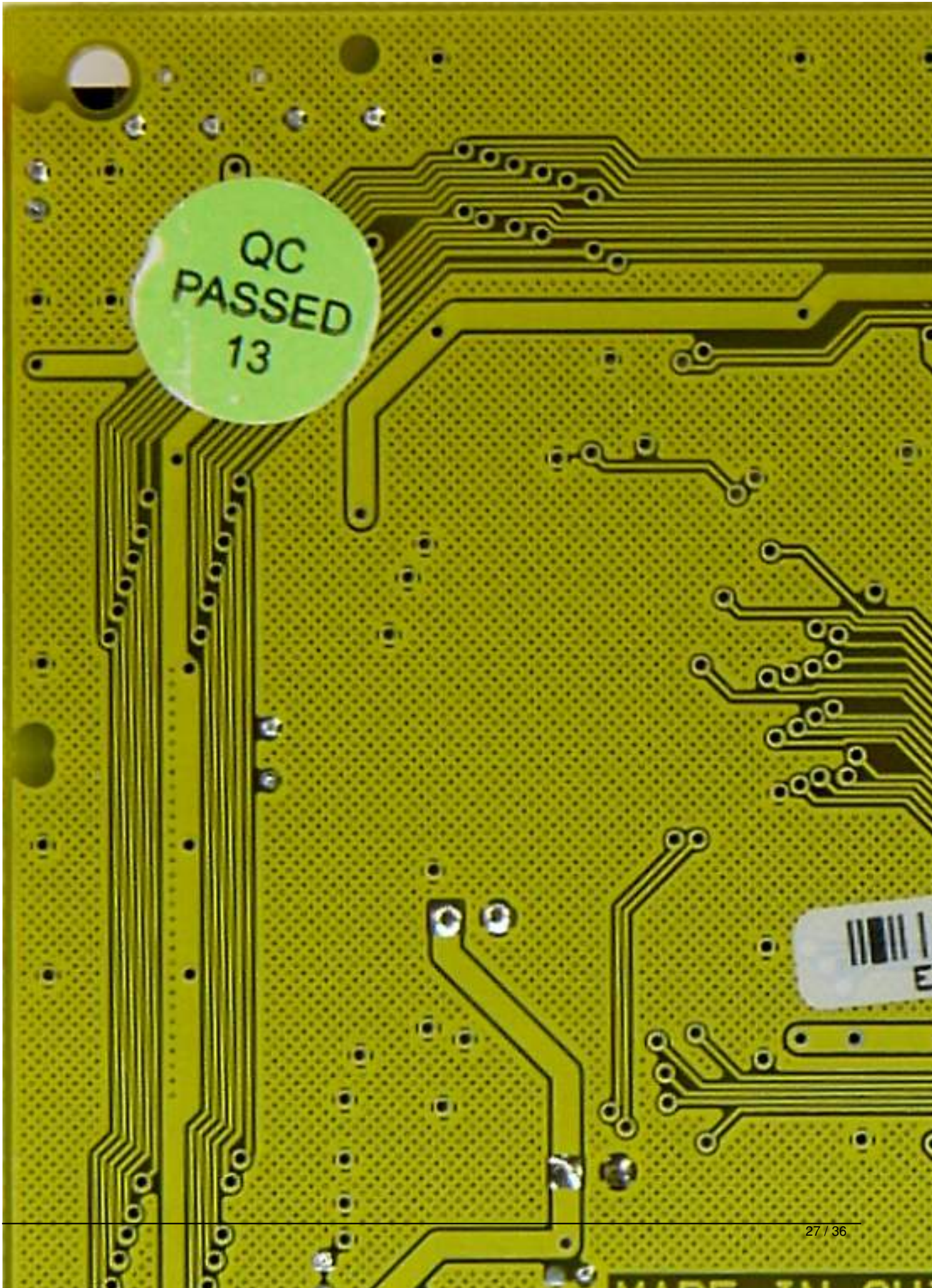

MV642 1

S3 86C775 Trio64V2/DX

Written by Vlask

Tuesday, 13 July 2010 09:18 - Last Updated Sunday, 15 April 2012 21:16





S3 86C775 Trio64V2/DX

Written by Vlask

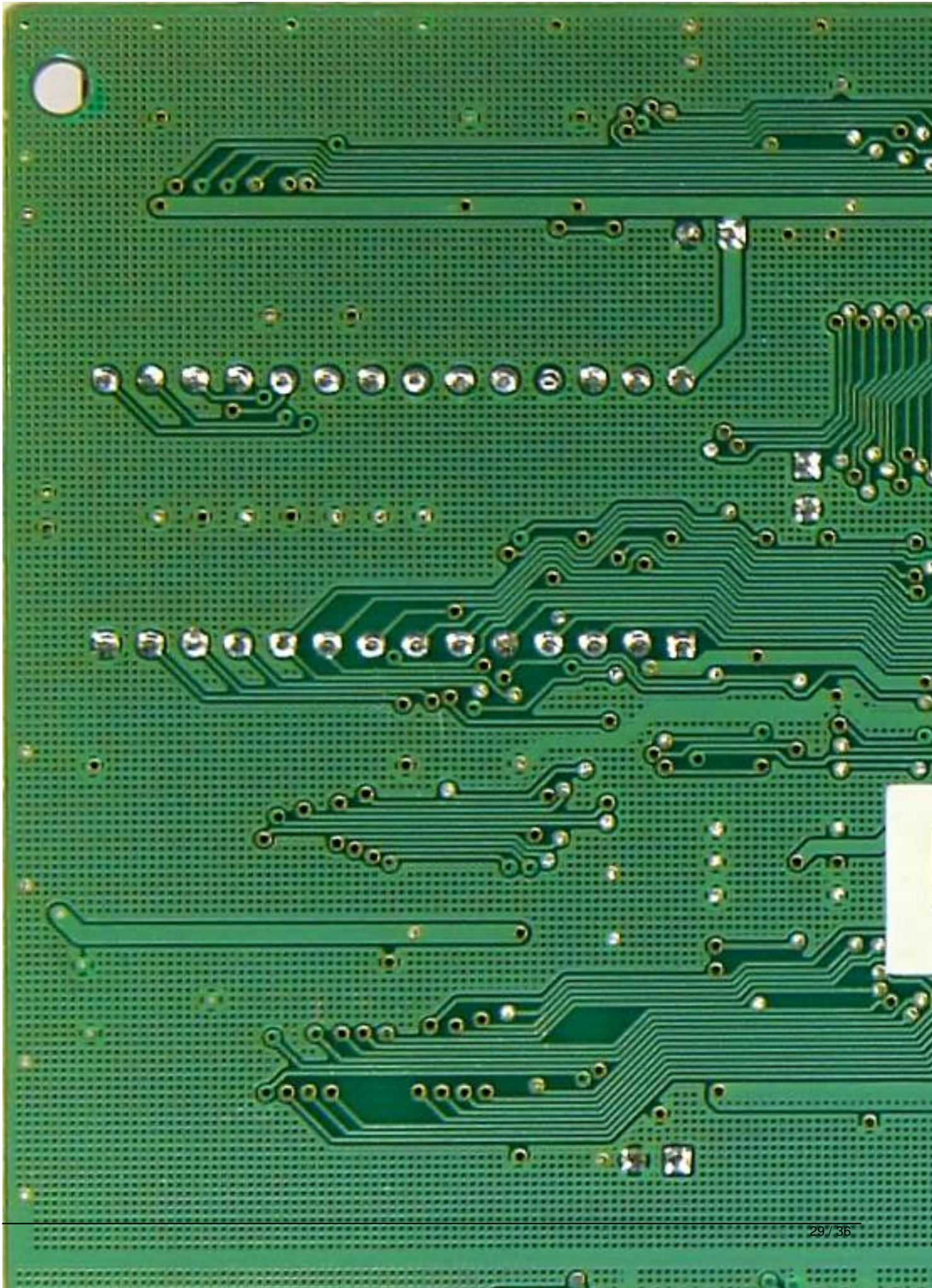
Tuesday, 13 July 2010 09:18 - Last Updated Sunday, 15 April 2012 21:16



S3 86C775 Trio64V2/DX

Written by Vlask

Tuesday, 13 July 2010 09:18 - Last Updated Sunday, 15 April 2012 21:16



S3 86C775 Trio64V2/DX

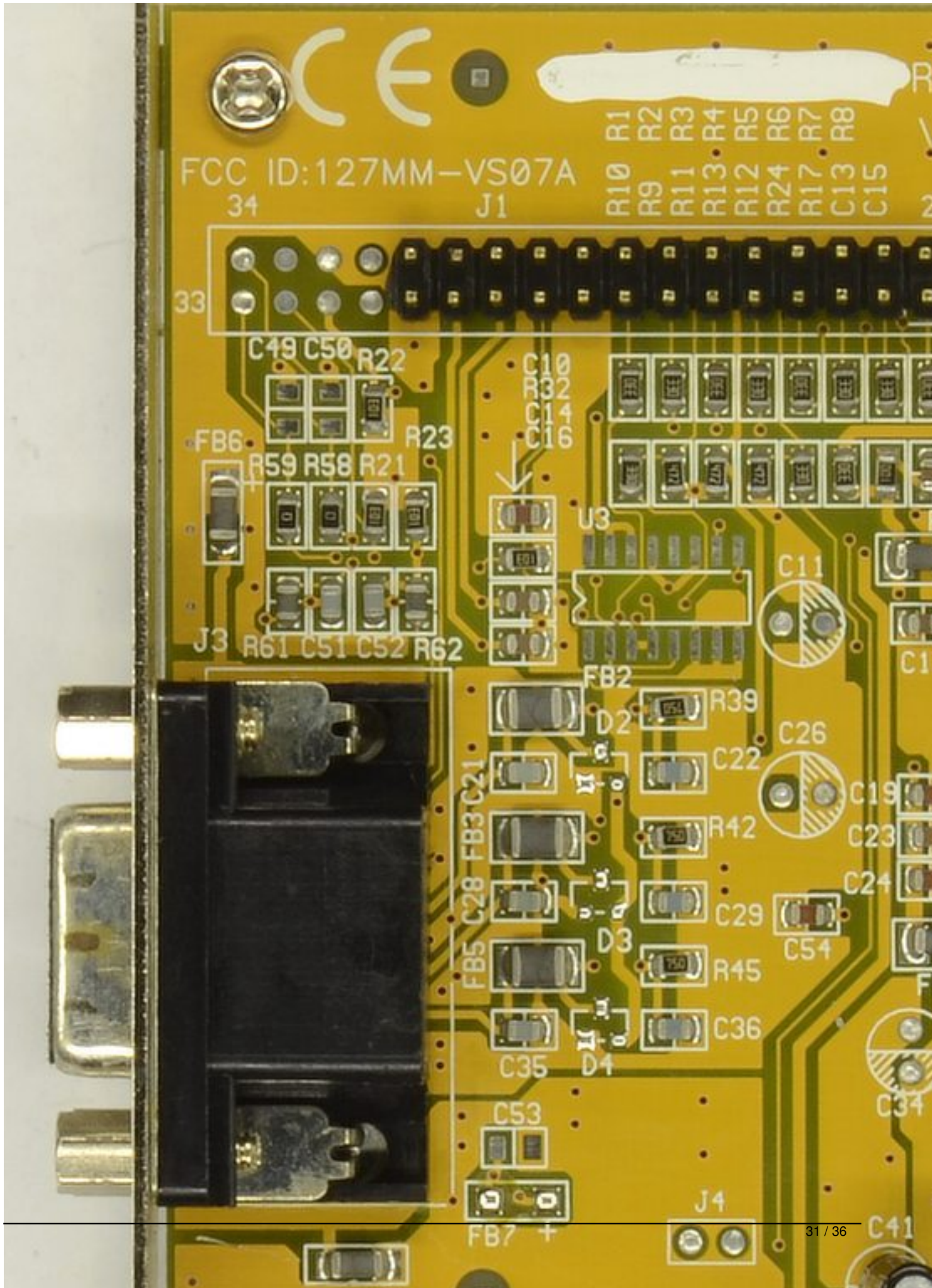
Written by Vlask

Tuesday, 13 July 2010 09:18 - Last Updated Sunday, 15 April 2012 21:16

S3 86C775 Trio64V2/DX

Written by Vlask

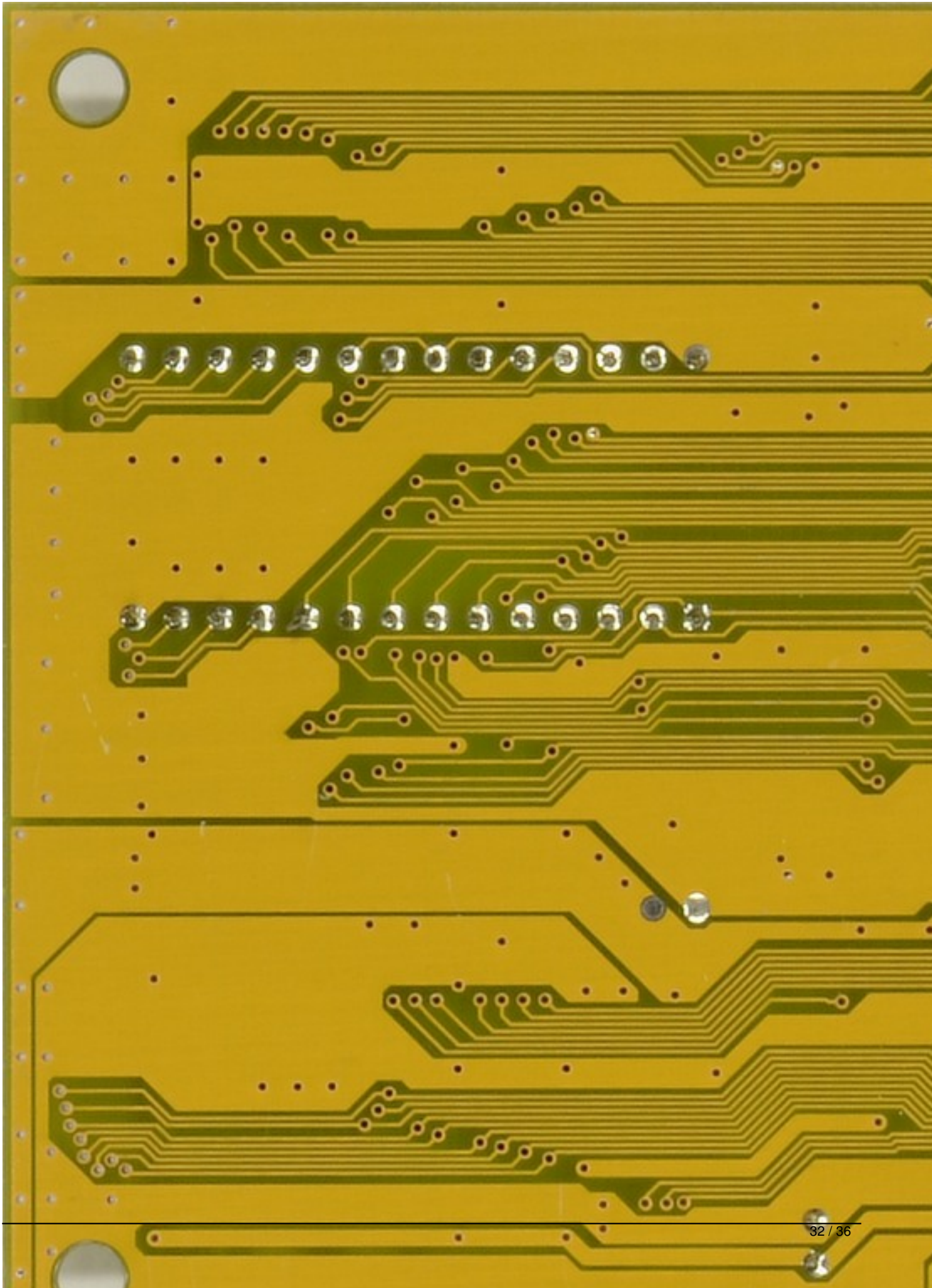
Tuesday, 13 July 2010 09:18 - Last Updated Sunday, 15 April 2012 21:16



S3 86C775 Trio64V2/DX

Written by Vlask

Tuesday, 13 July 2010 09:18 - Last Updated Sunday, 15 April 2012 21:16



S3 86C775 Trio64V2/DX

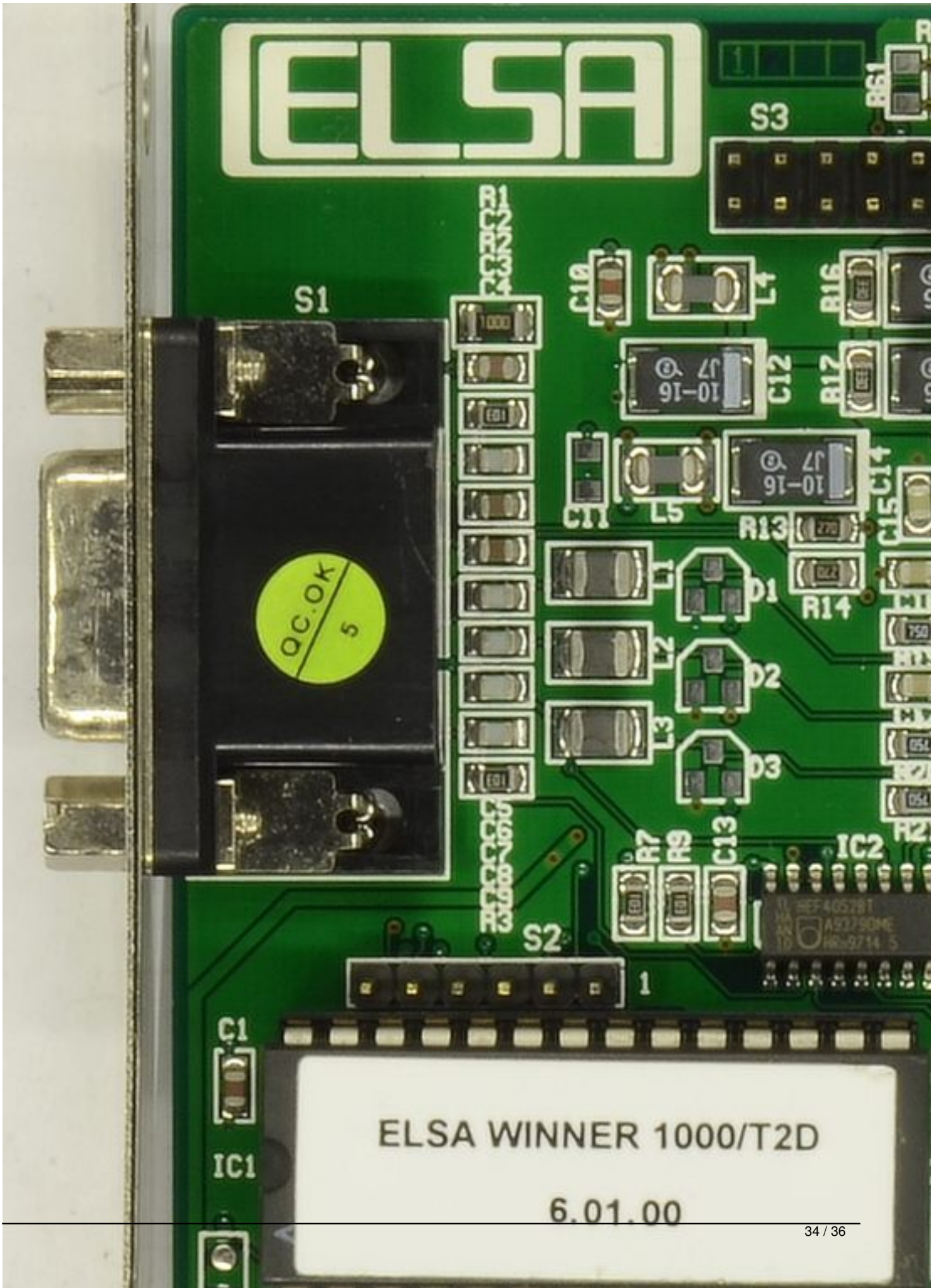
Written by Vlask

Tuesday, 13 July 2010 09:18 - Last Updated Sunday, 15 April 2012 21:16

S3 86C775 Trio64V2/DX

Written by Vlask

Tuesday, 13 July 2010 09:18 - Last Updated Sunday, 15 April 2012 21:16



WINNER 1000/T2D-2

FCC-ID: KJGW1000T2D



6013365099

co

4
Made in
Taiwan

This device complies with Part 15 of the FCC rules. Operation is subject of the following two conditions:

- (1) This device may not cause harmful interference, and
- (2) This device must accept any interference received, including interference that may cause undesired operation.

S3 86C775 Trio64V2/DX

Written by Vlask

Tuesday, 13 July 2010 09:18 - Last Updated Sunday, 15 April 2012 21:16

{/webgallery}