

## Avance Logic ALG2228

Written by palcal

Monday, 26 July 2010 22:30 - Last Updated Thursday, 19 July 2012 15:08

---



**Core:** ALG2228 ?MHz ?bit

**Memory:** 1MB (2MB max) ?MHz ?bit

**Year:** 1994 **Bus:** VL-Bus

**Made:** Taiwan **Links:** [specs](#)

{webgallery}

# Avance Logic ALG2228

Written by palcal

Monday, 26 July 2010 22:30 - Last Updated Thursday, 19 July 2012 15:08

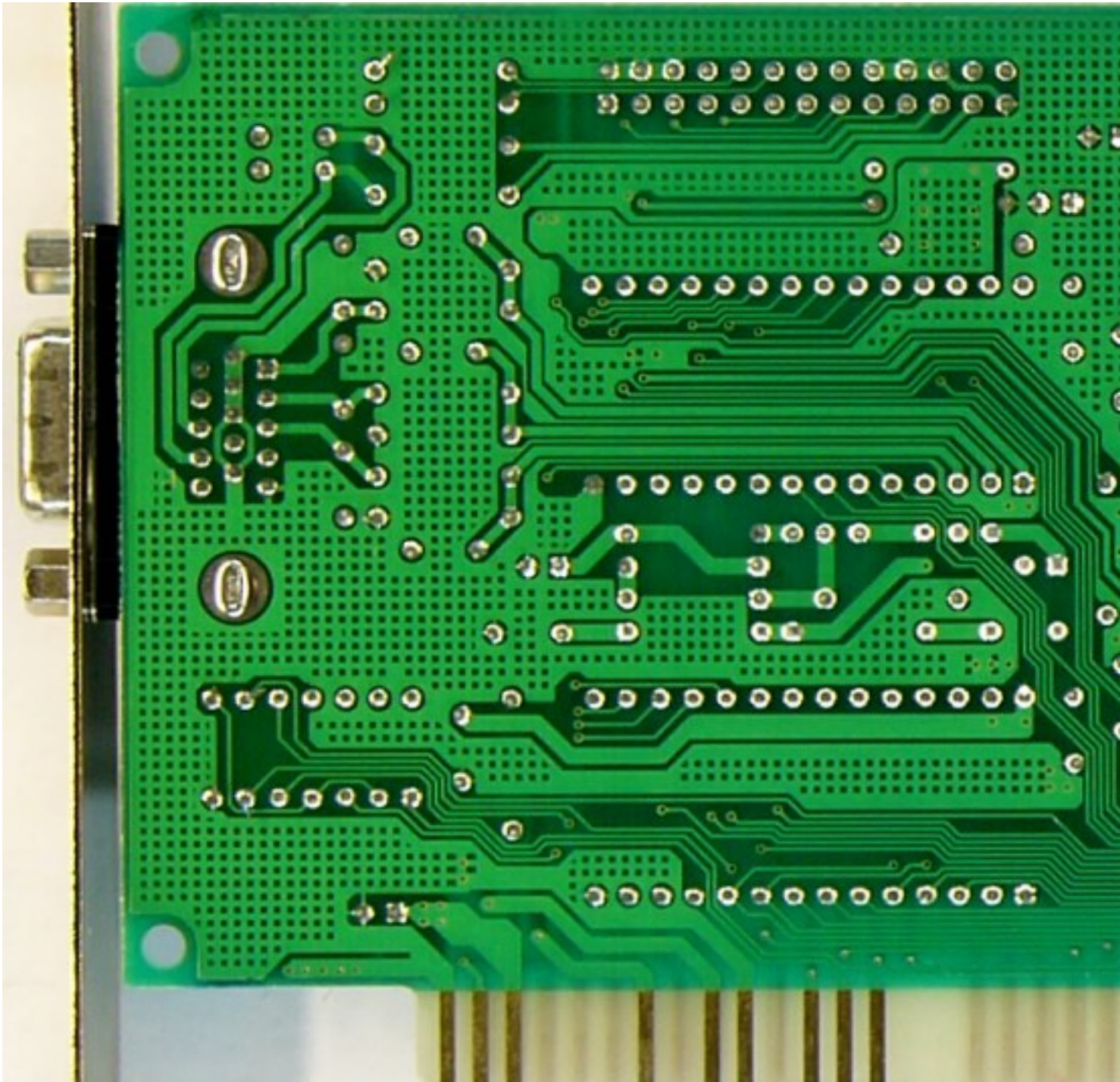


# Avance Logic ALG2228

Written by palcal

Monday, 26 July 2010 22:30 - Last Updated Thursday, 19 July 2012 15:08

---



# Avance Logic ALG2228

Written by palcal

Monday, 26 July 2010 22:30 - Last Updated Thursday, 19 July 2012 15:08

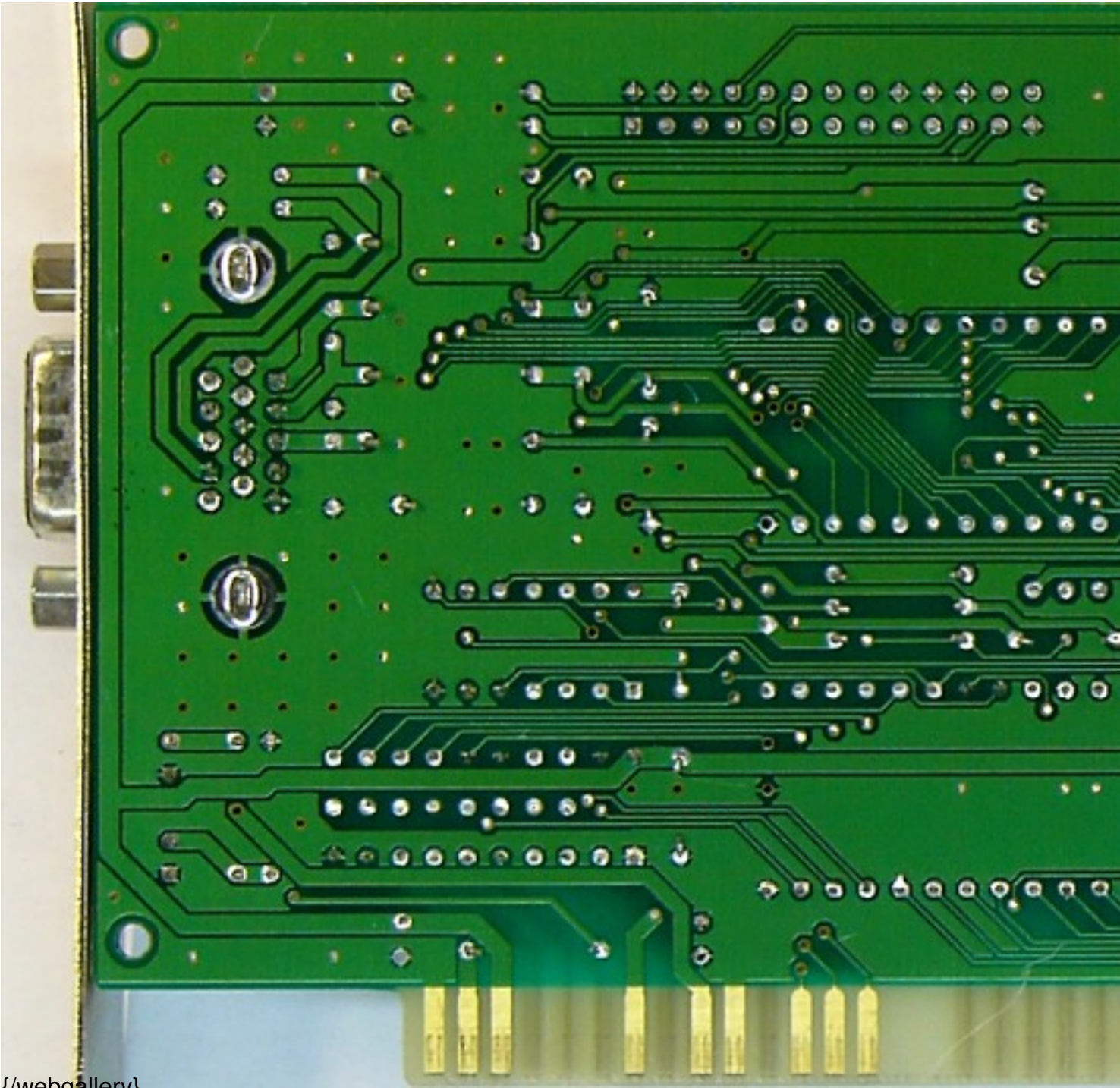


# Avance Logic ALG2228

Written by palcal

Monday, 26 July 2010 22:30 - Last Updated Thursday, 19 July 2012 15:08

---



{/webgallery}