

## 3Dlabs Glint R3

Written by Vlask

Friday, 04 December 2009 19:52 - Last Updated Monday, 12 September 2011 21:15

---



**Core:** Glint R3 110MHz ?bit

**Memory:** 32MB SDR ?MHz 128bit

**Year:** 1999 **Bus:** AGP 4x

**Made:** 0,25µm **Links:** [Sharkyextreme](#) **Price:** \$399

**Bios:** [3Dlabs](#)

{webgallery}

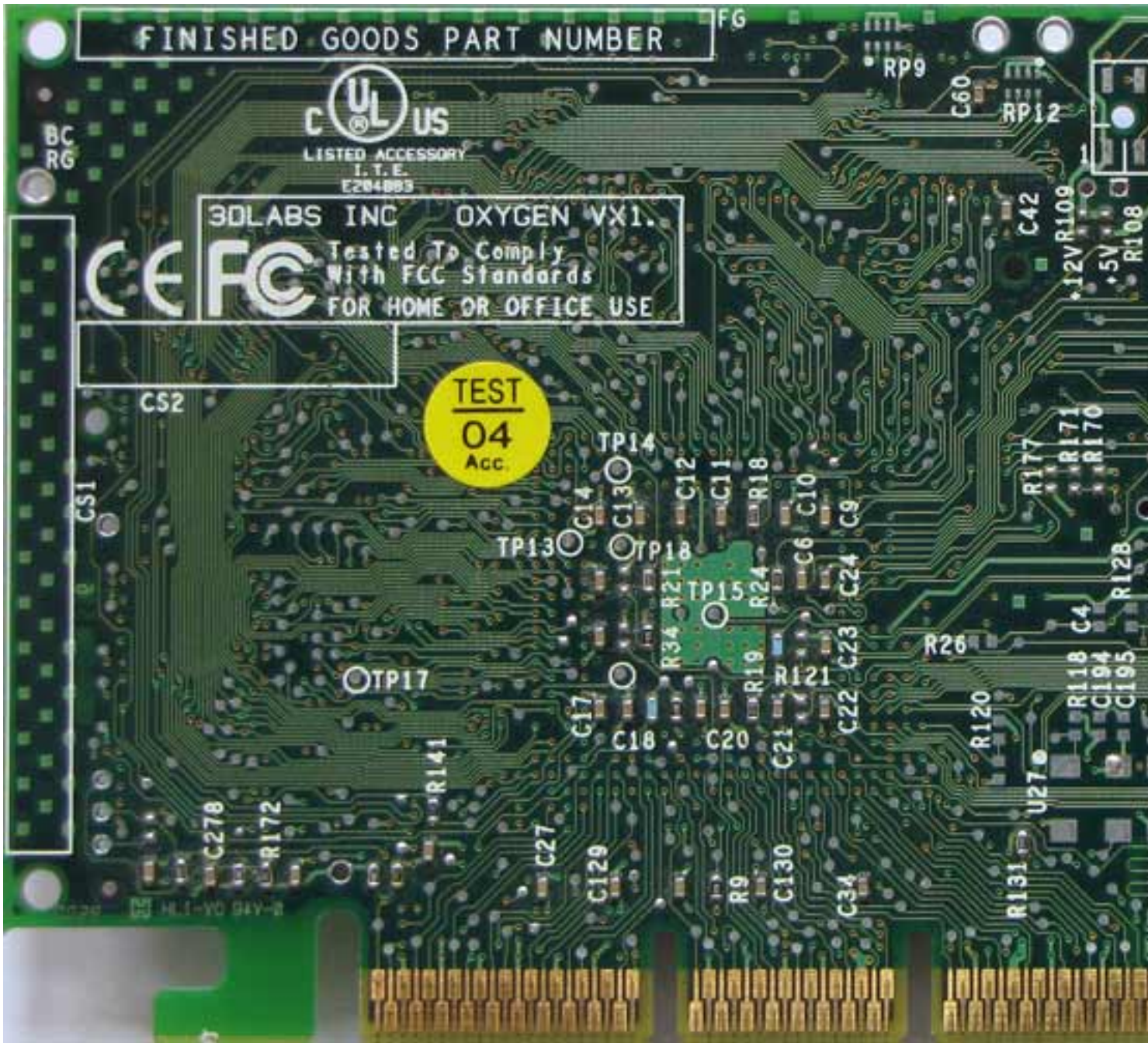




# 3DLabs Glint R3

Written by Vlask

Friday, 04 December 2009 19:52 - Last Updated Monday, 12 September 2011 21:15

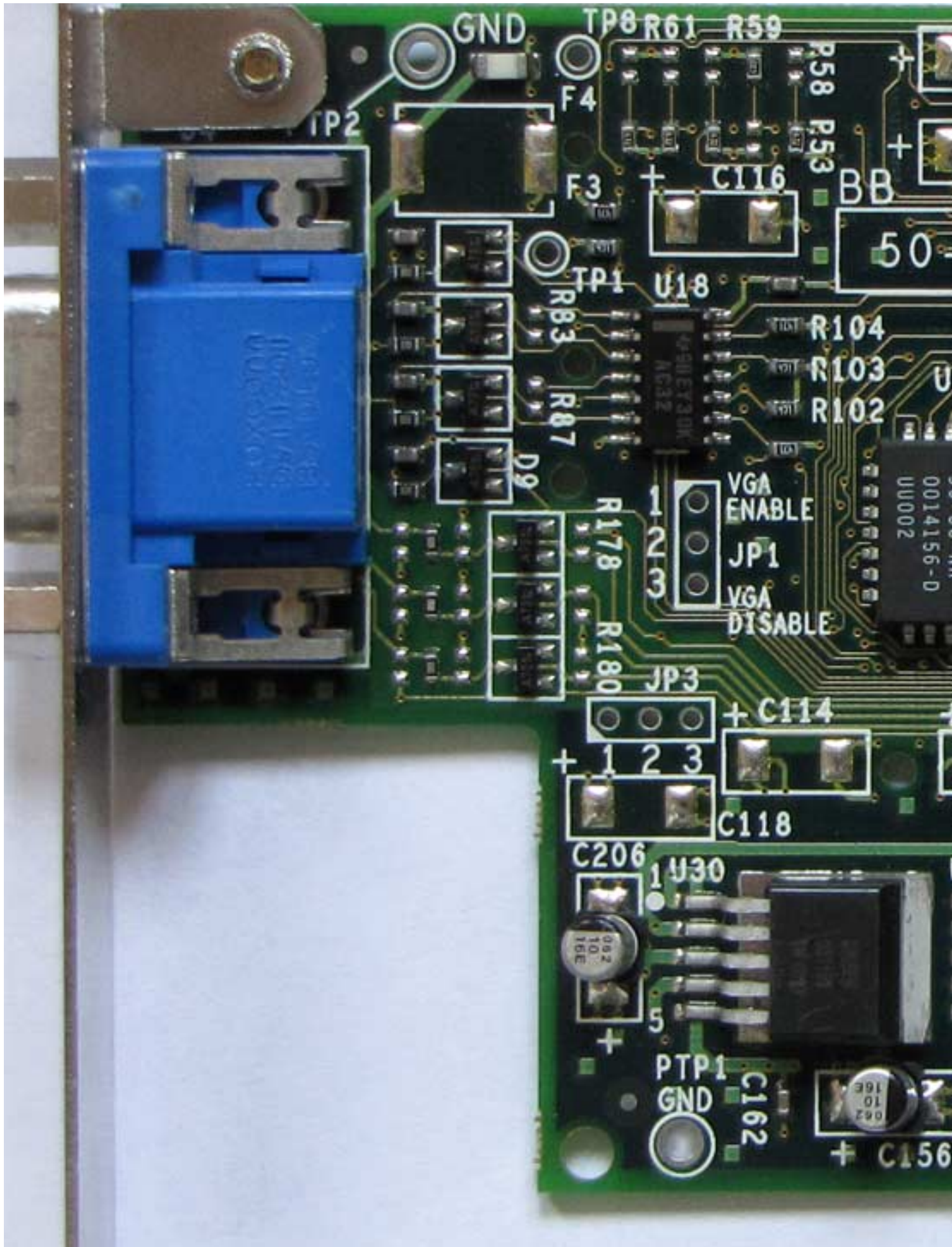




### 3Dlabs Glint R3

Written by Vlask

Friday, 04 December 2009 19:52 - Last Updated Monday, 12 September 2011 21:15



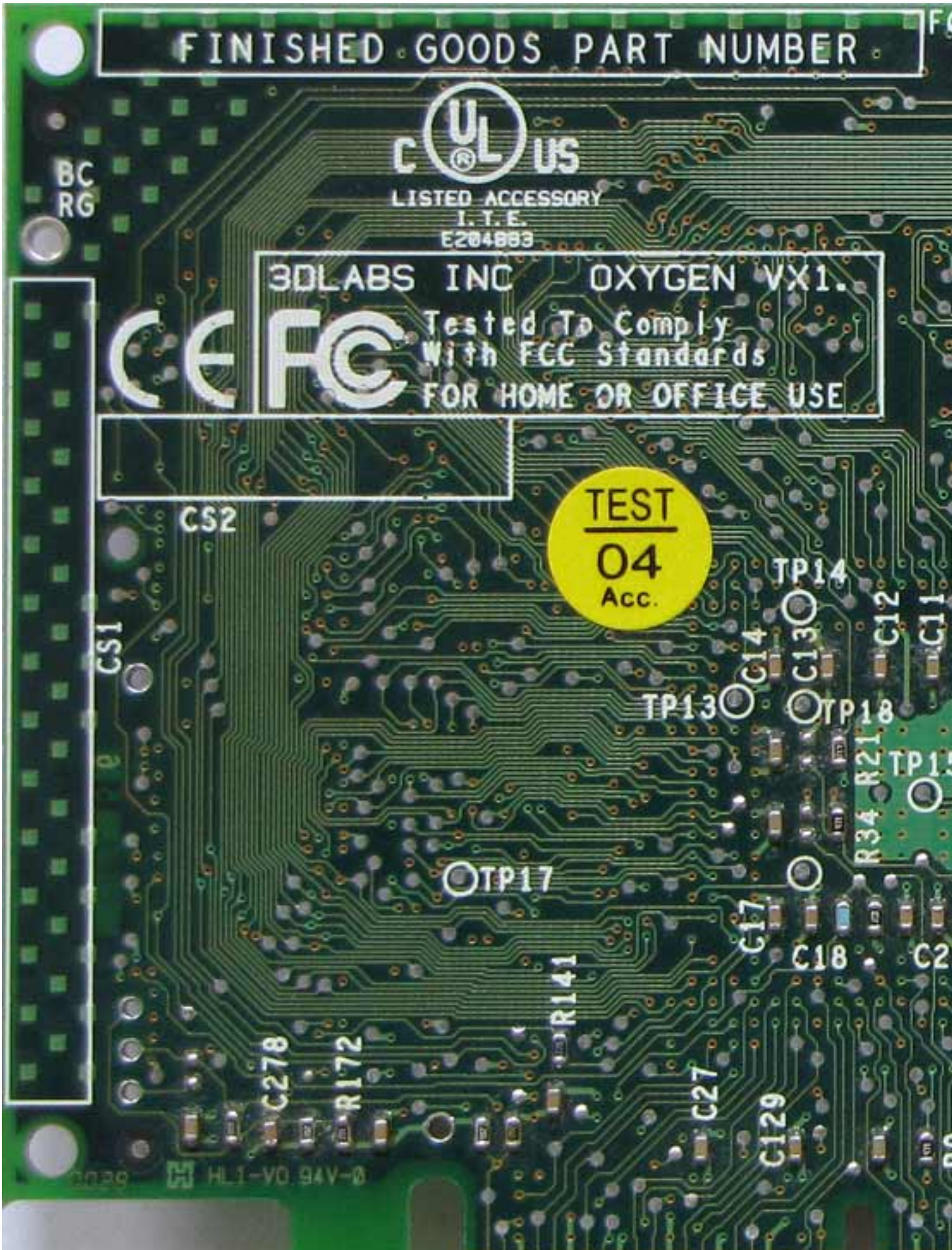
## 3Dlabs Glint R3

Written by Vlask

Friday, 04 December 2009 19:52 - Last Updated Monday, 12 September 2011 21:15

---





## 3Dlabs Glint R3

Written by Vlask

Friday, 04 December 2009 19:52 - Last Updated Monday, 12 September 2011 21:15

**3Dlabs Display Settings...** ?


Information | Setup | DirectX Support | OpenGL Support

**Driver Information**

Driver: 4.12.01.2107-0829R


Optimised Application/s: +

**Hardware Information**




Chip: GLINT R3, Rev 1  
Board: 3Dlabs Oxygen VX1  
Memory: 32768 KB  
DAC: R3RD  
BIOS: 2.16

**OpenGL Information**



OpenGL Release: 1.1.27  
DMA Sub-buffers: 2

**DirectX Information**



DirectX Release: 4.09.00.0904  
16bit alpha-luminance textures: On  
8bit RGB textures: Off  
Palettized textures: Off  
Texture origin at top left: No  
Gamma controls: On

### 3Dlabs Glint R3

Written by Vlask


Friday, 04 December 2009 19:52 - Last Updated Monday, 12 September 2011 21:15

---

The screenshot shows the '3Dlabs Display Settings...' dialog box with the 'Setup' tab selected. The dialog has a blue title bar and a grey background. At the top, there are four tabs: 'Information', 'Setup', 'DirectX Support', and 'OpenGL Support'. Below the tabs is the 3Dlabs logo and a 'Default Setup' button. The main area contains three sections: 'Taskbar based Configuration Manager' with an 'Enabled' checkbox, 'Display Controls' with an 'Optimal Refresh Rate' dropdown set to '100 Hz', and 'Gamma Adjustment' with a slider and a numeric input field set to '1.00'.

**3Dlabs Display Settings...**

Information | **Setup** | DirectX Support | OpenGL Support

 Default Setup

Taskbar based Configuration Manager  Enabled

Display Controls

Optimal Refresh Rate: 100 Hz

Gamma Adjustment: 1.00



### 3Dlabs Glint R3

Written by Vlask

Friday, 04 December 2009 19:52 - Last Updated Monday, 12 September 2011 21:15

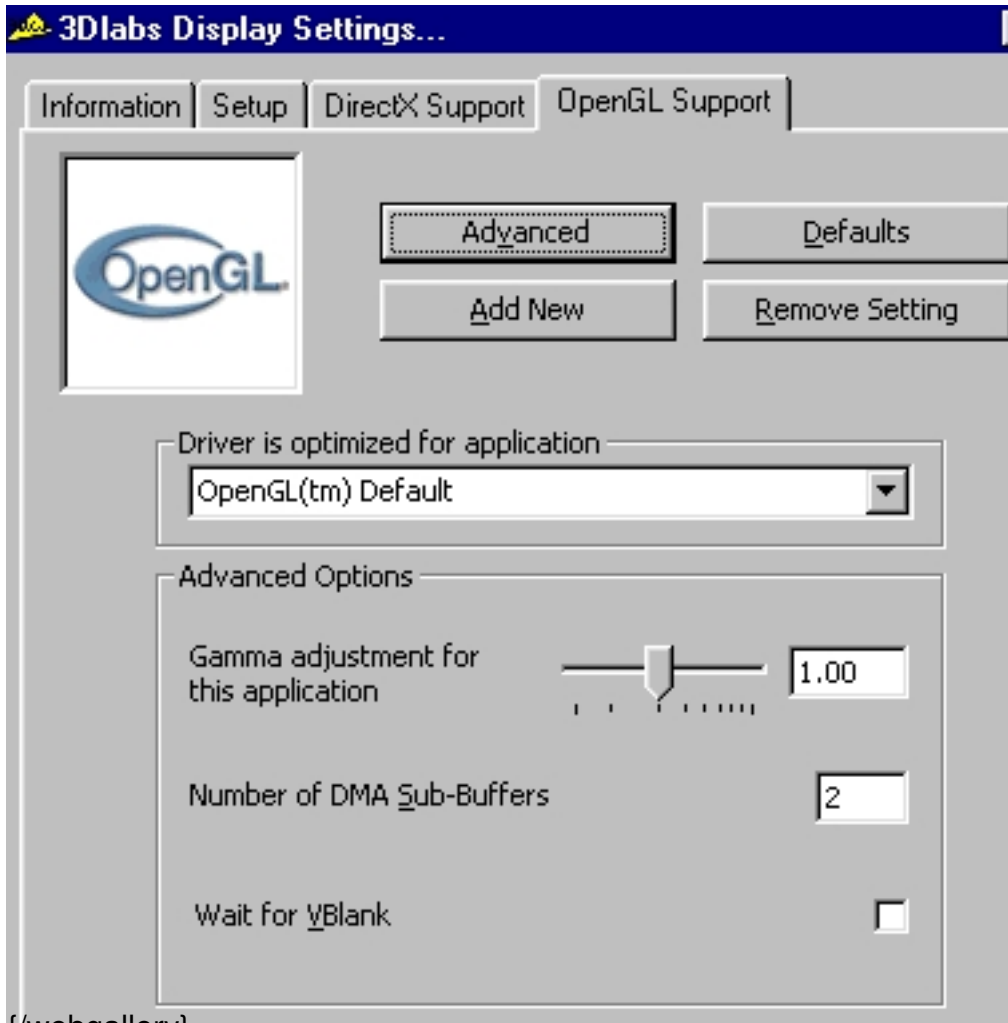


### 3DLabs Glint R3

Written by Vlask

Friday, 04 December 2009 19:52 - Last Updated Monday, 12 September 2011 21:15

---



{/webgallery}