

Alliance Semiconductor ProMotion aT3D

Written by Vlask

Sunday, 18 December 2011 21:46 - Last Updated Thursday, 25 July 2013 15:15



Core: ProMotion aT3D 61MHz 128bit

Memory: 4MB EDO 61MHz 64bit

Year: 1997 **Bus:** PCI

Made: ? **Links:** [Press](#) [Pdf](#) [Vintage3D](#) [Pdf short](#)

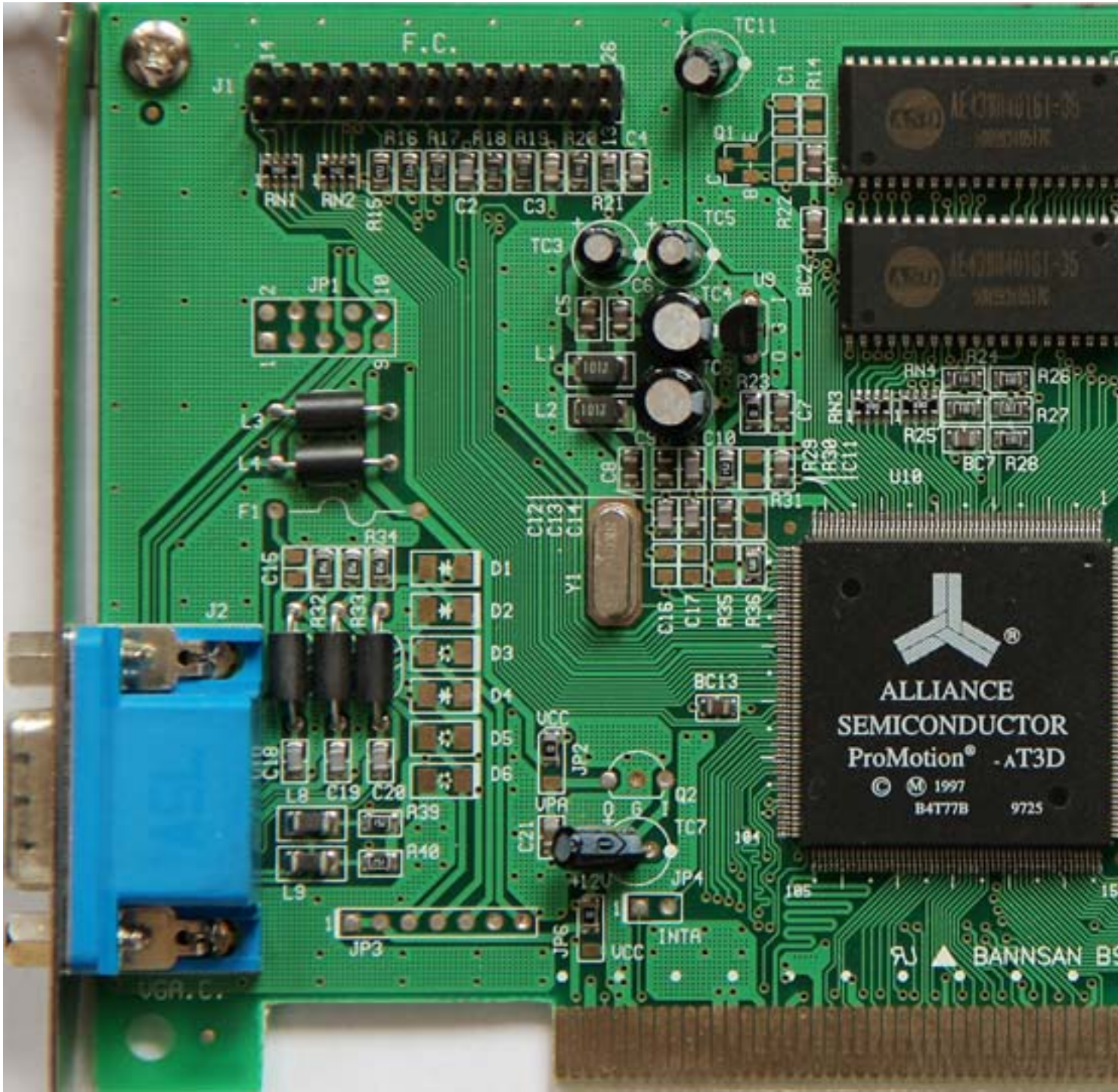
Bios: [Super Grace](#)

{webgallery}

Alliance Semiconductor ProMotion aT3D

Written by Vlask

Sunday, 18 December 2011 21:46 - Last Updated Thursday, 25 July 2013 15:15



Alliance Semiconductor ProMotion aT3D

Written by Vlask

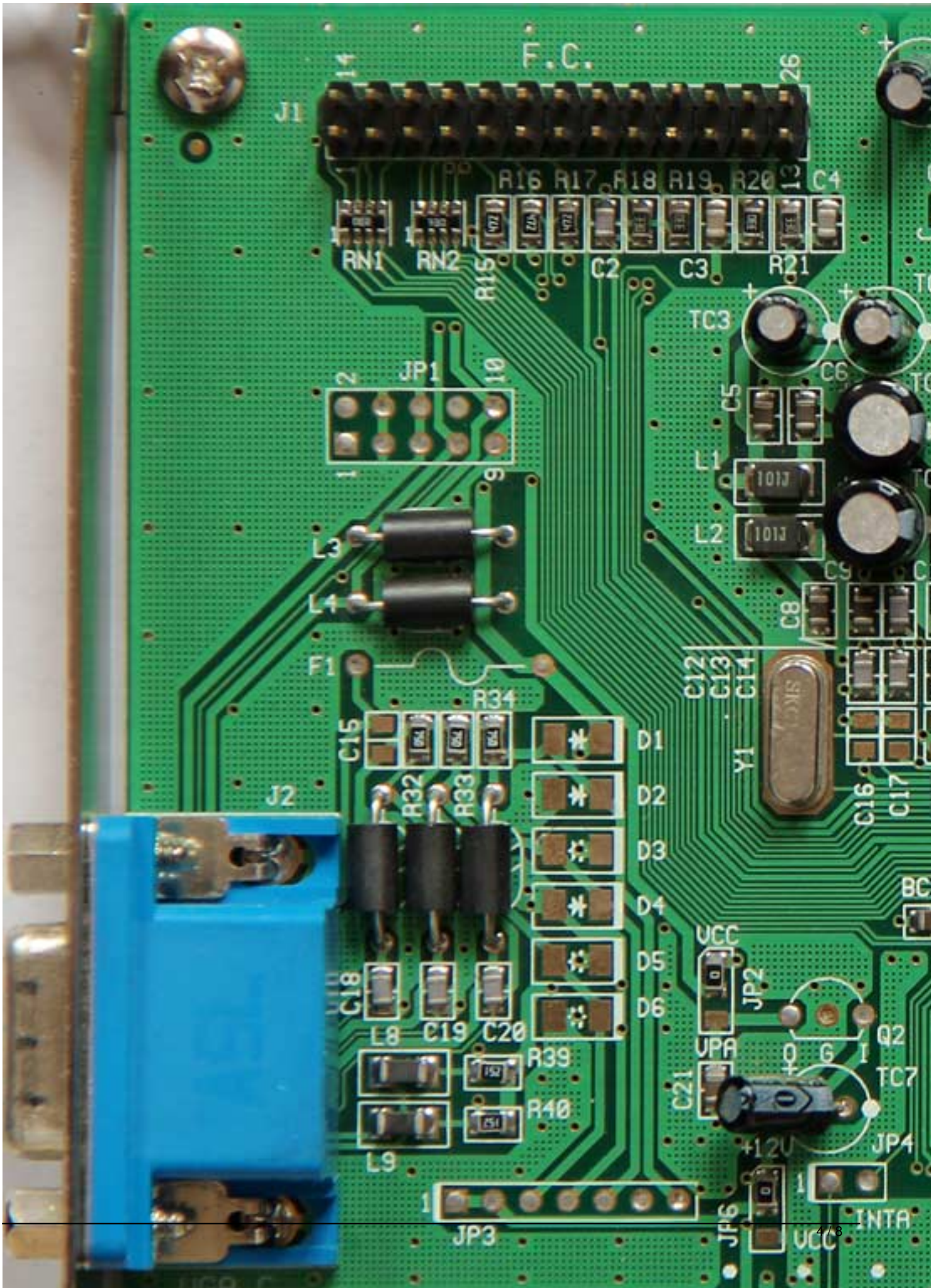
Sunday, 18 December 2011 21:46 - Last Updated Thursday, 25 July 2013 15:15



Alliance Semiconductor ProMotion aT3D

Written by Vlask

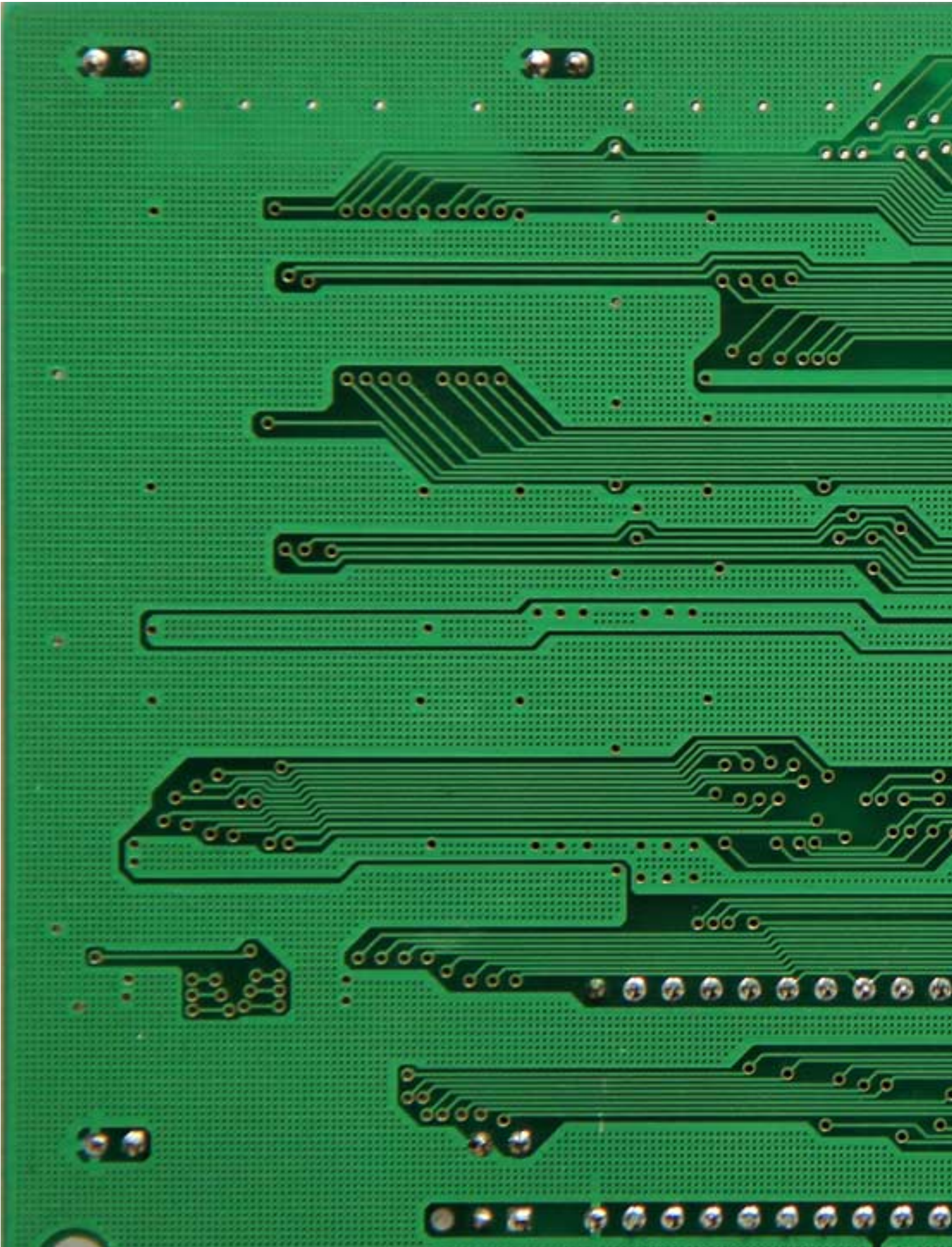
Sunday, 18 December 2011 21:46 - Last Updated Thursday, 25 July 2013 15:15



Alliance Semiconductor ProMotion aT3D

Written by Vlask

Sunday, 18 December 2011 21:46 - Last Updated Thursday, 25 July 2013 15:15



Alliance Semiconductor ProMotion aT3D

Written by Vlask

Sunday, 18 December 2011 21:46 - Last Updated Thursday, 25 July 2013 15:15

Správa barev  Alliance Director's Chair 95

Alliance Driver Information

- Driver Version : 4.10.00 (Build 2072).
- Colors : 65K colors (16 bpp).
- Current resolution : 800 x 600.
- Director's Chair Version : 1.00.26.
- Refresh Rate Set To : 120 Hz.

Alliance AT3D Card Information

- Memory Size : 4.0 MB.
- BIOS Version : 2.30.00 (Build 29).
- Manufacturer : Generic.

Alliance AT3D Features

- Desktop Gamma : Disabled.
- Video Gamma : Disabled.

Alliance TV Features

- VGA Monitor : Present.
- TV Monitor : Not present.
- TV Features Tab : Not available.

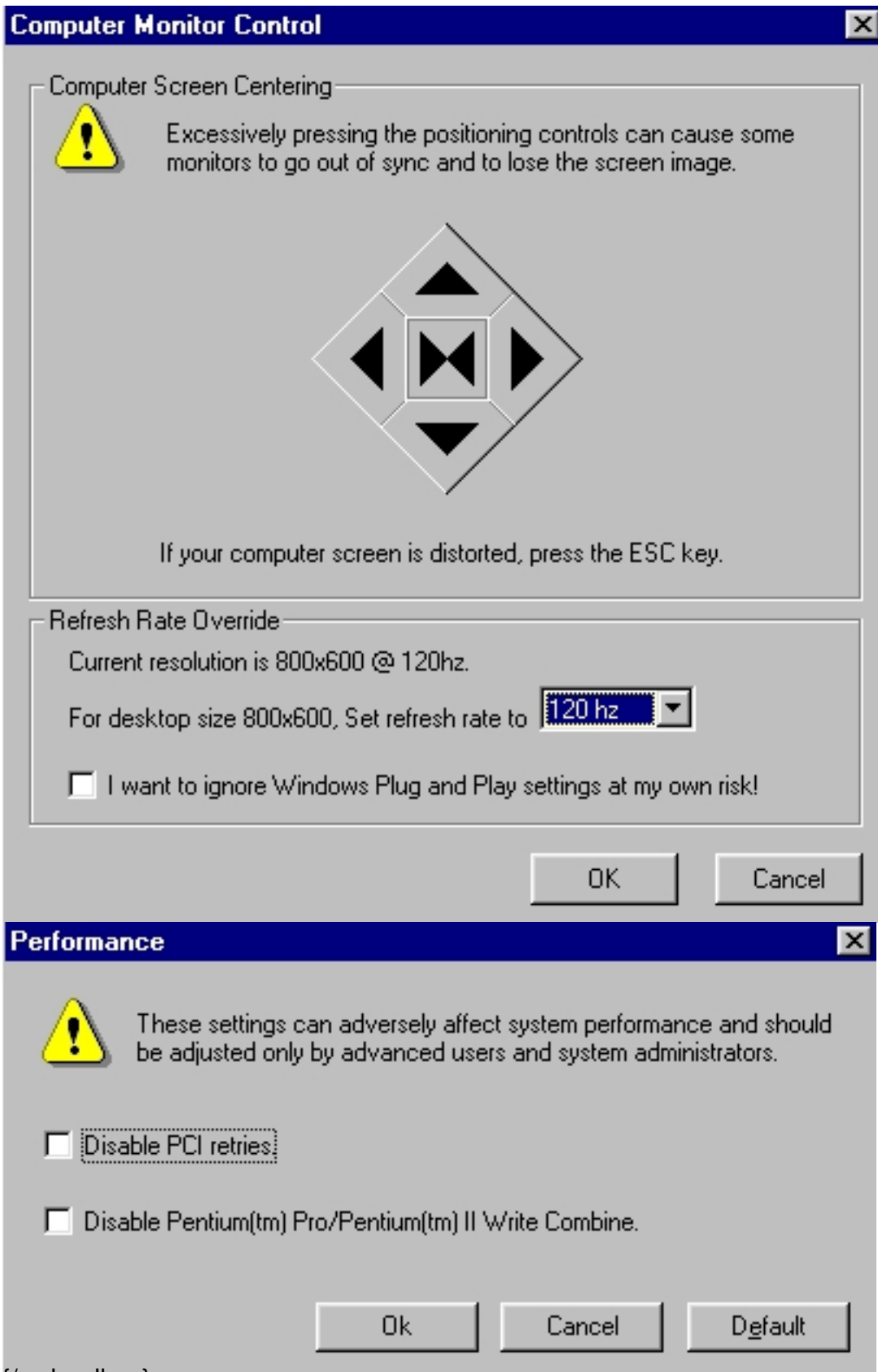


[Monitor Control](#)

[Performance](#)

[About](#)

Copyright © 1996-1998 Alliance Semiconductor.



{/webgallery}