

ATI Radeon X1300

Written by Vlask

Saturday, 31 December 2011 11:27 - Last Updated Monday, 06 May 2013 22:45



Core: RV515 446MHz (default is 450) ?bit

Memory: 128/256MB DDR/DDR2 478/476MHz 64bit

Year: 2005 **Bus:** PCI-E 16x

Made: TSMC 90nm **Links:** [Asus](#) [AMD](#) [Wiki](#) [OpenGL](#)

Bios: [Ati](#)

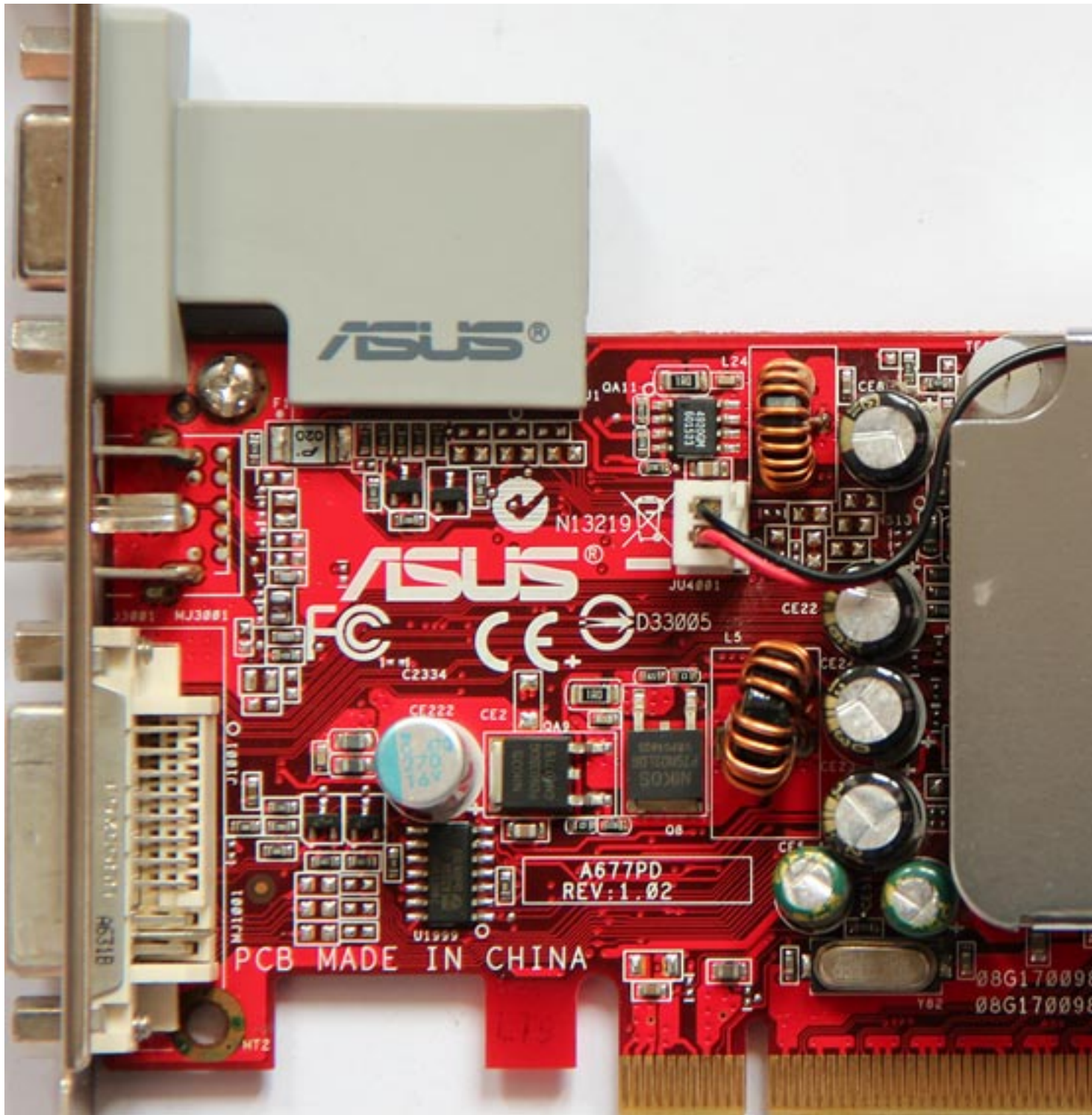
Note: ATI-102-A77104-11 B is OEM version with 256MB DDR2 at 476MHz

{webgallery}

ATI Radeon X1300

Written by Vlask

Saturday, 31 December 2011 11:27 - Last Updated Monday, 06 May 2013 22:45

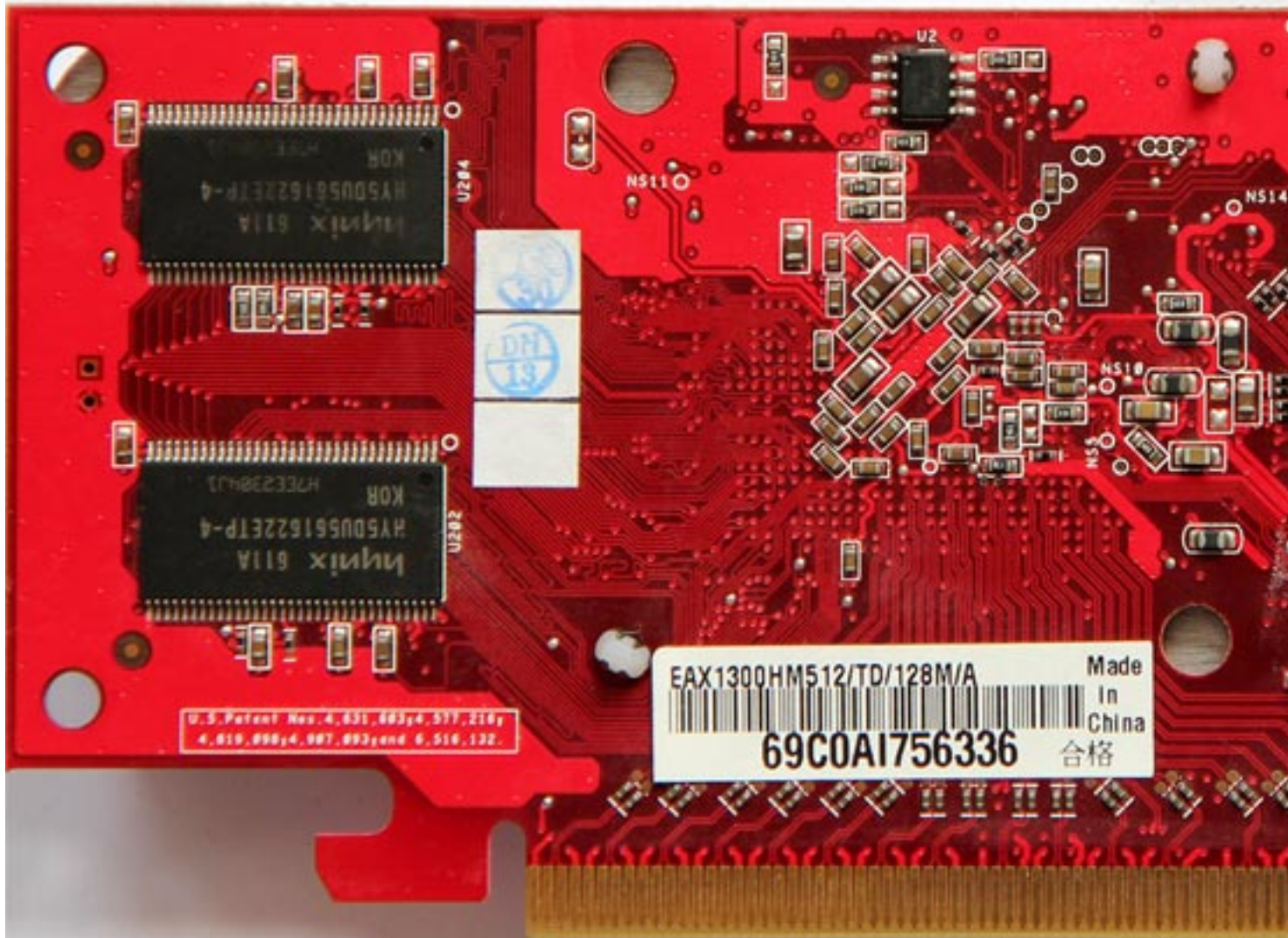


ATI Radeon X1300

Written by Vlask

Saturday, 31 December 2011 11:27 - Last Updated Monday, 06 May 2013 22:45

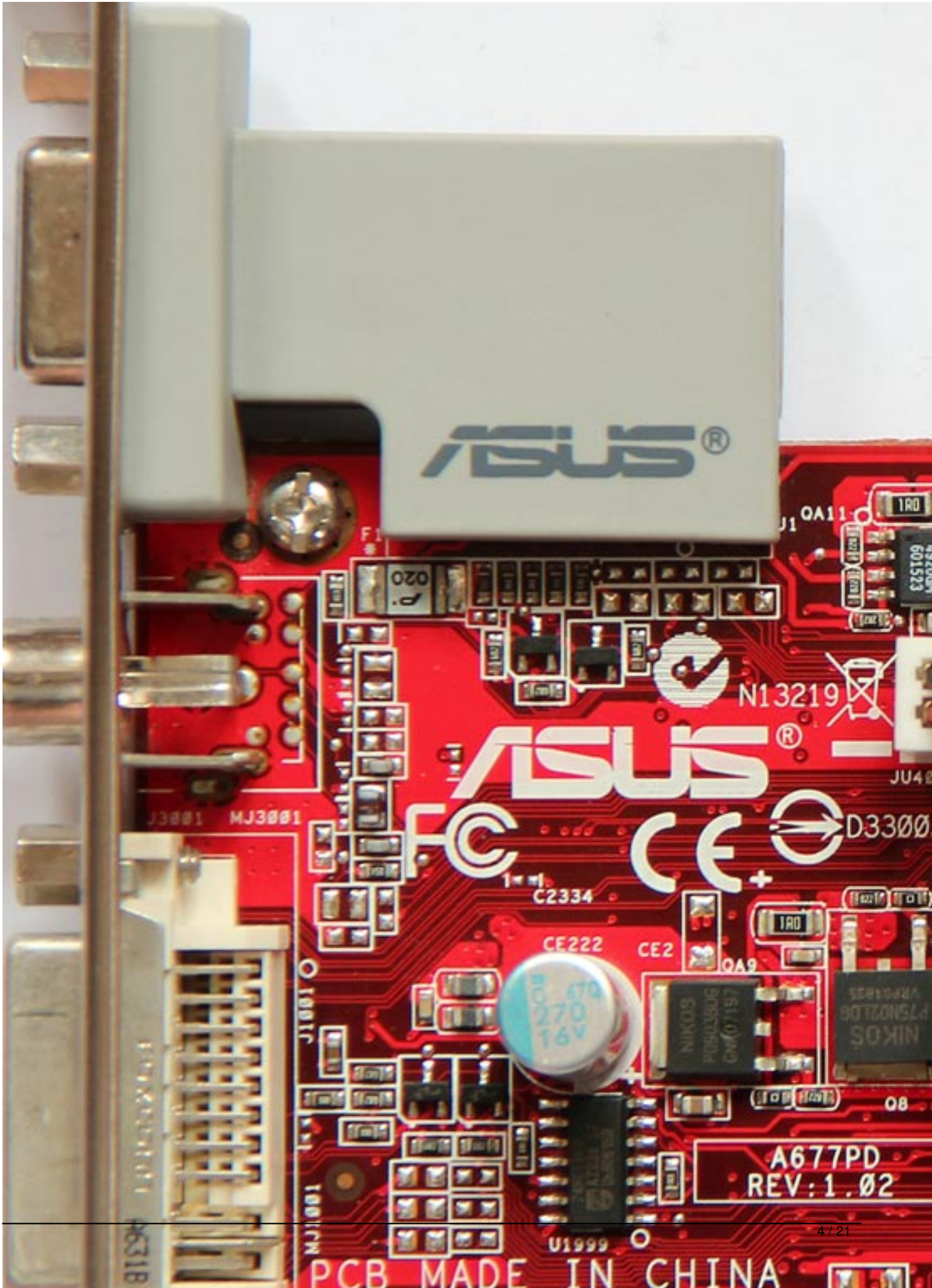
www.vgamuseum.info



ATI Radeon X1300

Written by Vlask

Saturday, 31 December 2011 11:27 - Last Updated Monday, 06 May 2013 22:45



ATI Radeon X1300

Written by Vlask

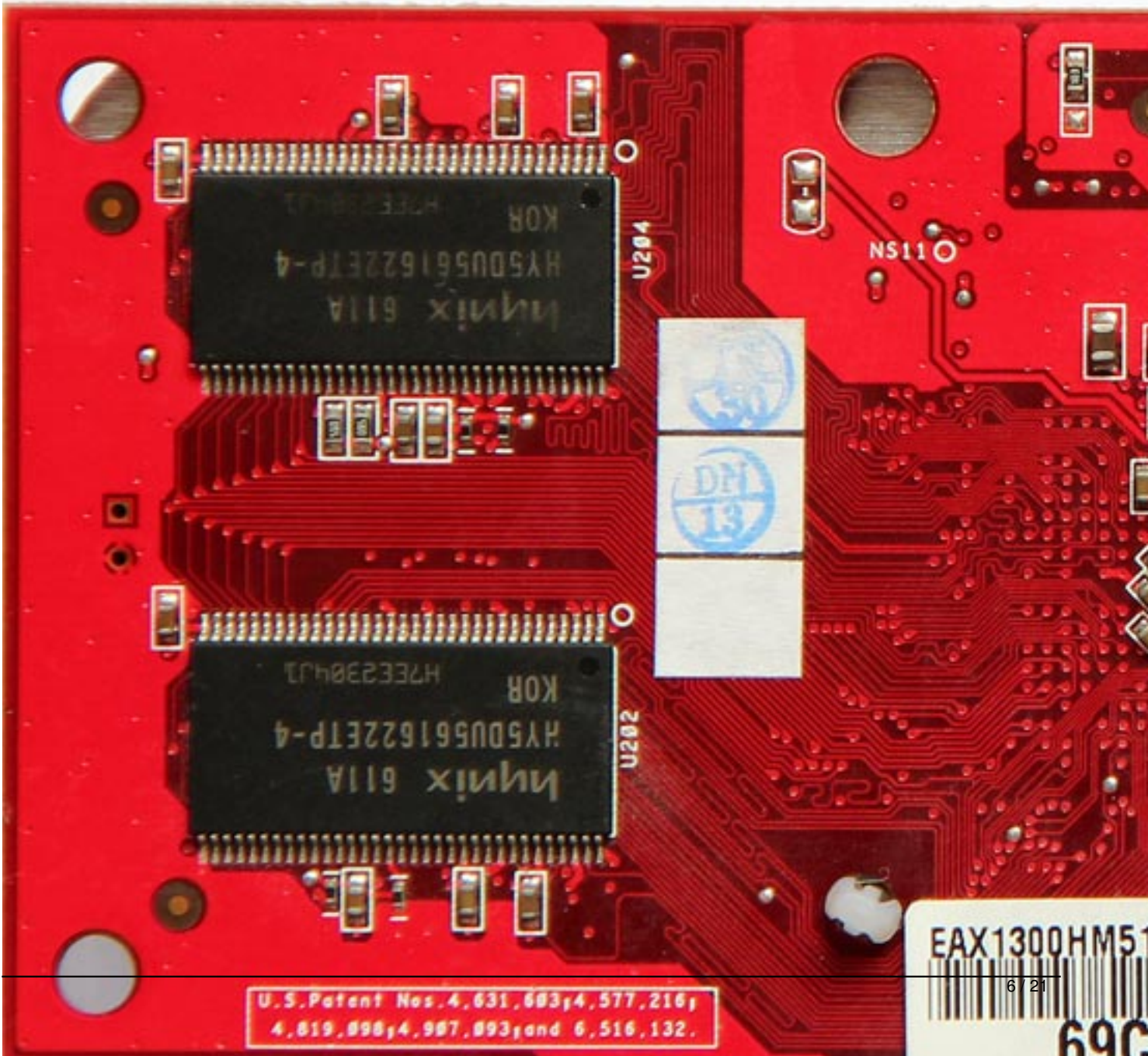
Saturday, 31 December 2011 11:27 - Last Updated Monday, 06 May 2013 22:45

ATI Radeon X1300

Written by Vlask

Saturday, 31 December 2011 11:27 - Last Updated Monday, 06 May 2013 22:45

www.vgamuseum.info



ATI Radeon X1300

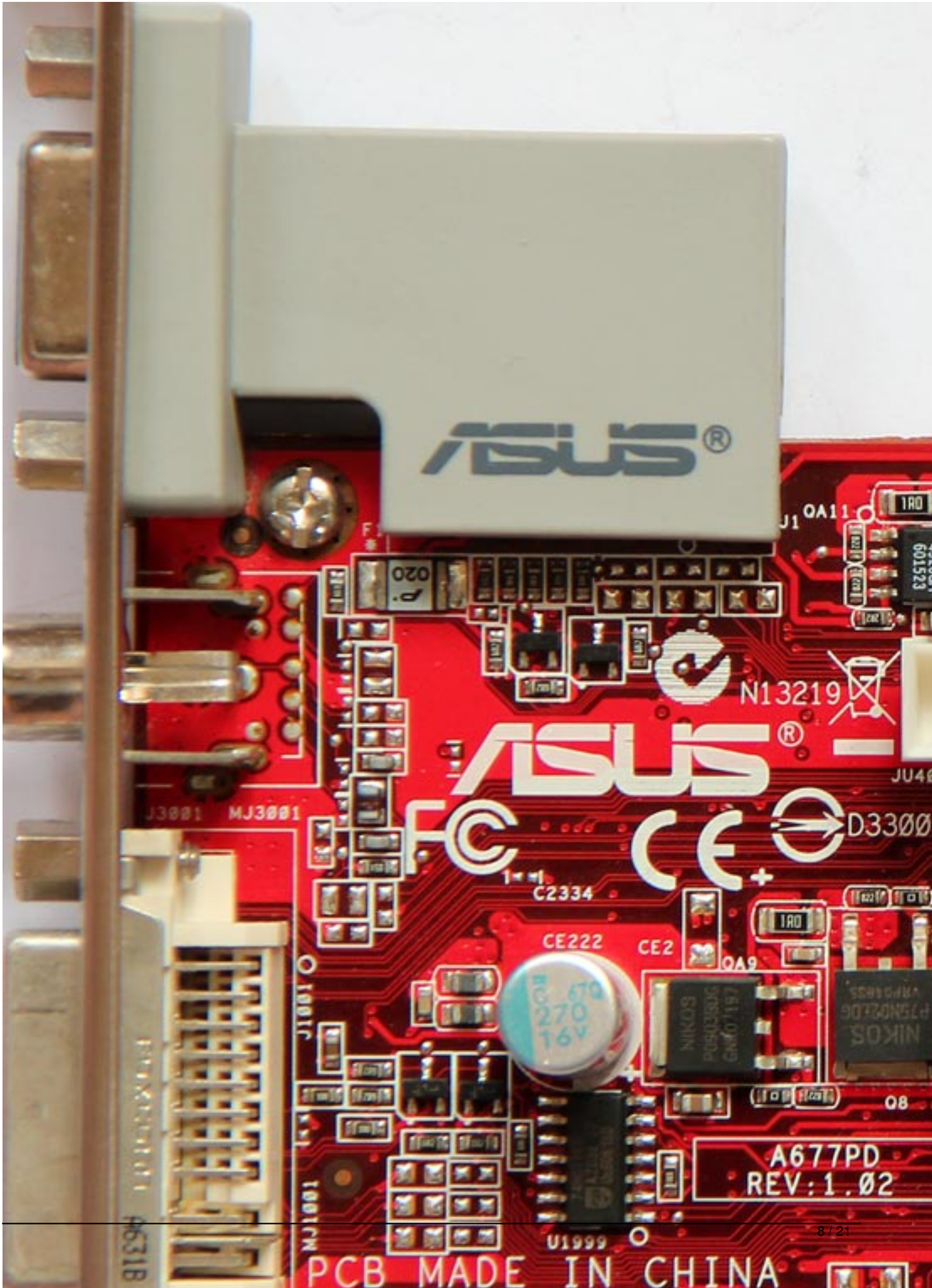
Written by Vlask

Saturday, 31 December 2011 11:27 - Last Updated Monday, 06 May 2013 22:45

ATI Radeon X1300

Written by Vlask

Saturday, 31 December 2011 11:27 - Last Updated Monday, 06 May 2013 22:45



ATI Radeon X1300

Written by Vlask

Saturday, 31 December 2011 11:27 - Last Updated Monday, 06 May 2013 22:45

The screenshot shows the TechPowerUp GPU-Z 0.5.7 application window. The 'Graphics Card' tab is selected, displaying the following information:

Field	Value
Name	Radeon X1300/X1550 Series
GPU	RV515
Revision	N/A
Technology	90 nm
Die Size	100 mm ²
Release Date	2005
Transistors	105M
BIOS Version	009.012.008.002.000000
Device ID	1002 - 7146
Subvendor	ASUS (1043)
ROPs	4
Bus Interface	PCI-E 1.1 x16 @ x4 1.1
Shaders	4 Pixel / 2 Vertex
DirectX Support	9.0c / SM3.0
Pixel Fillrate	1.8 GPixel/s
Texture Fillrate	1.8 GTexel/s
Memory Type	DDR
Bus Width	64 Bit
Memory Size	128 MB
Bandwidth	3.8 GB/s
Driver Version	ati2mtag 8.593.100.0 (Catalyst 10.2) / XP
GPU Clock	446 MHz
Memory Clock	239 MHz
Shader Clock	
Default GPU Clock	450 MHz
Default Memory Clock	250 MHz
Default Shader Clock	
ATI CrossFire	Disabled
Computing	<input type="checkbox"/> OpenCL <input type="checkbox"/> CUDA <input type="checkbox"/> PhysX <input type="checkbox"/> DirectCompute

At the bottom of the window, there is a dropdown menu showing 'Radeon X1300/X1550 Series' and a 'Close' button.

ATI Radeon X1300

Written by Vlask

Saturday, 31 December 2011 11:27 - Last Updated Monday, 06 May 2013 22:45



ATI Radeon X1300

Written by Vlask

Saturday, 31 December 2011 11:27 - Last Updated Monday, 06 May 2013 22:45

ATI Radeon X1300

Written by Vlask

Saturday, 31 December 2011 11:27 - Last Updated Monday, 06 May 2013 22:45



ATI Radeon X1300

Written by Vlask

Saturday, 31 December 2011 11:27 - Last Updated Monday, 06 May 2013 22:45

ATI Radeon X1300

Written by Vlask

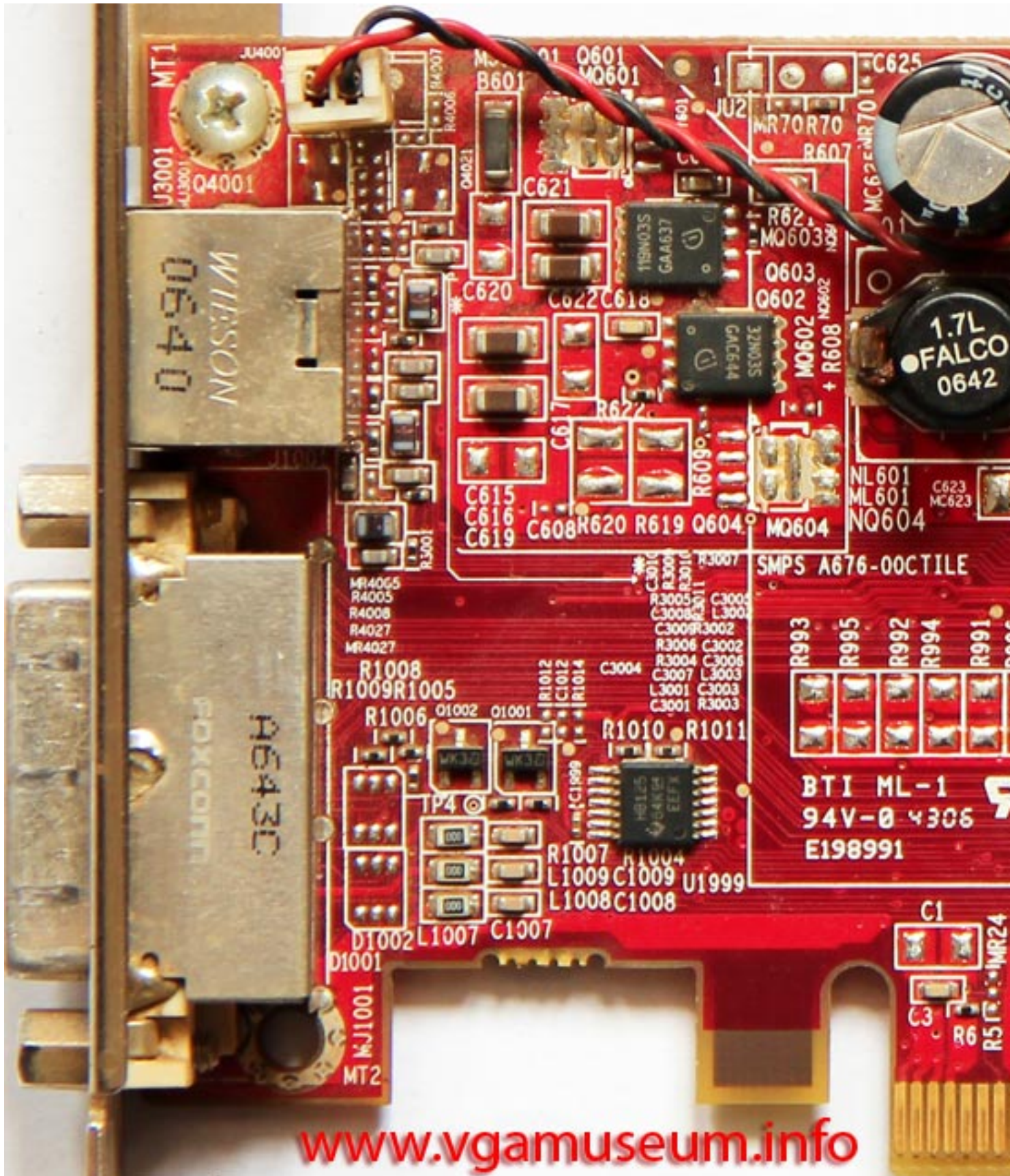
Saturday, 31 December 2011 11:27 - Last Updated Monday, 06 May 2013 22:45



ATI Radeon X1300

Written by Vlask

Saturday, 31 December 2011 11:27 - Last Updated Monday, 06 May 2013 22:45

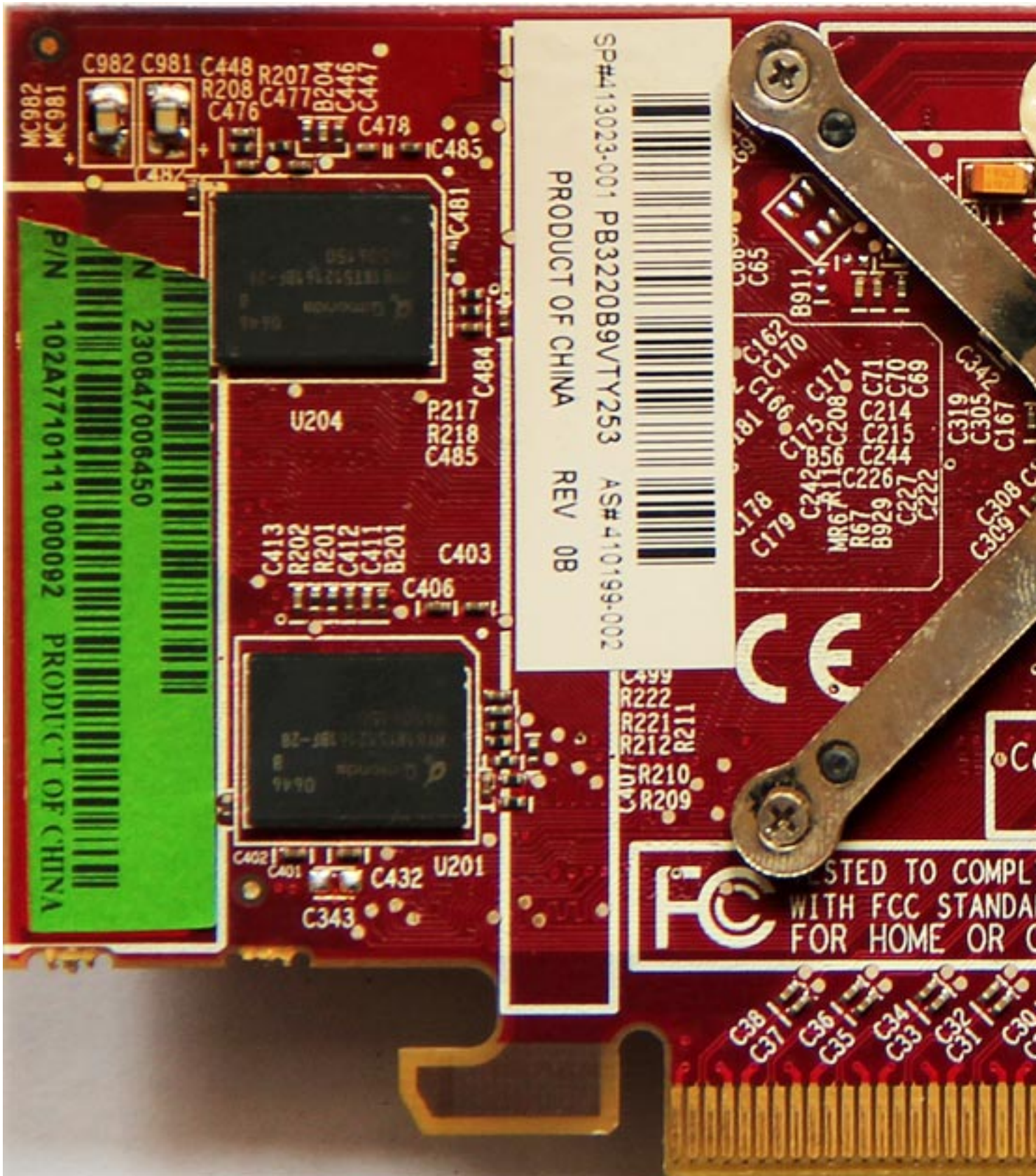


www.vgamuseum.info

ATI Radeon X1300

Written by Vlask

Saturday, 31 December 2011 11:27 - Last Updated Monday, 06 May 2013 22:45



ATI Radeon X1300

Written by Vlask

Saturday, 31 December 2011 11:27 - Last Updated Monday, 06 May 2013 22:45

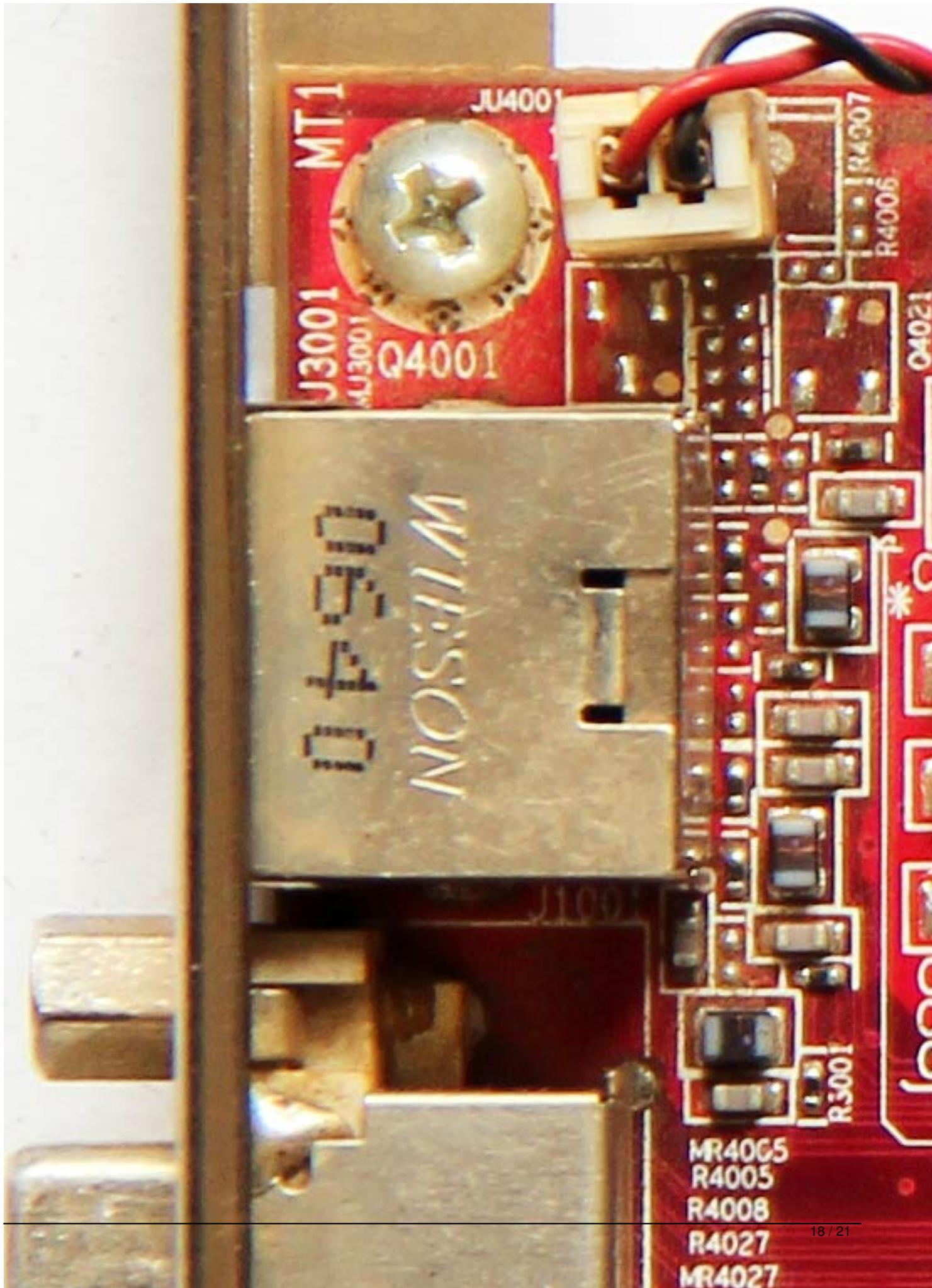
The screenshot shows the TechPowerUp GPU-Z 0.6.8 application window. The 'Graphics Card' tab is selected, displaying various specifications for the ATI Radeon X1300/X1550 Series GPU. The interface includes a top navigation bar with 'Graphics Card', 'Sensors', and 'Validation' tabs. The main area contains a grid of fields for GPU name, GPU model (RV515), revision (N/A), technology (90 nm), die size (100 mm²), release date (2005), transistors (105M), BIOS version (009.012.006.002.017808), device ID (1002 - 7146), subvendor (ATI (1002)), ROPs/TMUs (4 / 4), bus interface (PCI-E 1.1 x16 @ x4 1.1), shaders (4 Pixel / 2 Vertex), DirectX support (9.0c / SM3.0), pixel fillrate (1.8 GPixel/s), texture fillrate (1.8 GTexel/s), memory type (DDR2), bus width (64 Bit), memory size (256 MB), bandwidth (3.8 GB/s), driver version (ati2mtag 8.593.100.0 (Catalyst 10.2) / XP), GPU clock (446 MHz), memory clock (239 MHz), shader clock (N/A), default clock (450 MHz), memory default (250 MHz), shader default (N/A), and ATI CrossFire (Disabled). At the bottom, there are checkboxes for 'Computing' options: OpenCL, CUDA, PhysX, and DirectCompute, all of which are currently unchecked. A dropdown menu at the bottom left shows 'Radeon X1300/X1550 Series' and a 'Close' button is located at the bottom right.

Field	Value
Name	Radeon X1300/X1550 Series
GPU	RV515
Revision	N/A
Technology	90 nm
Die Size	100 mm ²
Release Date	2005
Transistors	105M
BIOS Version	009.012.006.002.017808
Device ID	1002 - 7146
Subvendor	ATI (1002)
ROPs/TMUs	4 / 4
Bus Interface	PCI-E 1.1 x16 @ x4 1.1
Shaders	4 Pixel / 2 Vertex
DirectX Support	9.0c / SM3.0
Pixel Fillrate	1.8 GPixel/s
Texture Fillrate	1.8 GTexel/s
Memory Type	DDR2
Bus Width	64 Bit
Memory Size	256 MB
Bandwidth	3.8 GB/s
Driver Version	ati2mtag 8.593.100.0 (Catalyst 10.2) / XP
GPU Clock	446 MHz
Memory	239 MHz
Shader	N/A
Default Clock	450 MHz
Memory	250 MHz
Shader	N/A
ATI CrossFire	Disabled
Computing	<input type="checkbox"/> OpenCL <input type="checkbox"/> CUDA <input type="checkbox"/> PhysX <input type="checkbox"/> DirectCompute

ATI Radeon X1300

Written by Vlask

Saturday, 31 December 2011 11:27 - Last Updated Monday, 06 May 2013 22:45



ATI Radeon X1300

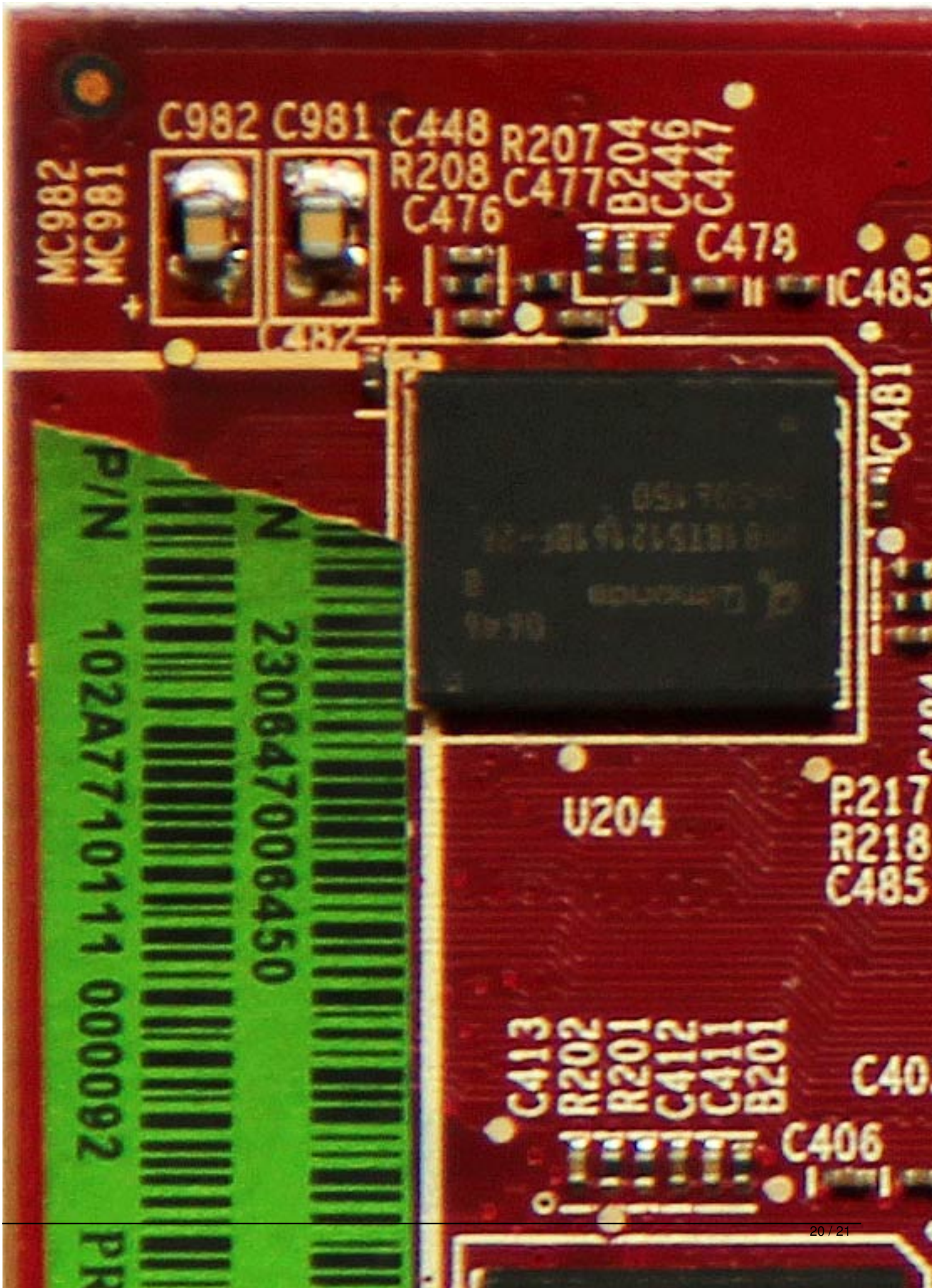
Written by Vlask

Saturday, 31 December 2011 11:27 - Last Updated Monday, 06 May 2013 22:45

ATI Radeon X1300

Written by Vlask

Saturday, 31 December 2011 11:27 - Last Updated Monday, 06 May 2013 22:45



ATI Radeon X1300

Written by Vlask

Saturday, 31 December 2011 11:27 - Last Updated Monday, 06 May 2013 22:45

{/webgallery}