

ATI Radeon HD 3850

Written by Vlask

Sunday, 22 January 2012 15:26 - Last Updated Monday, 06 May 2013 22:42



Core: RV670 669MHz **Shaders:** 320

Memory: 512MB GDDR3 1386MHz 256bit

Year: 2007 **Bus:** PCI-E 16x 2.0

Made: TSMC 55nm Taiwan **Links:** [Anandtech](#) [Techpowerup](#) [OpenGL](#)

Bios: [Sapphire](#)

Note: Zalman VF700 cooler edition

{webgallery}

ATI Radeon HD 3850

Written by Vlask

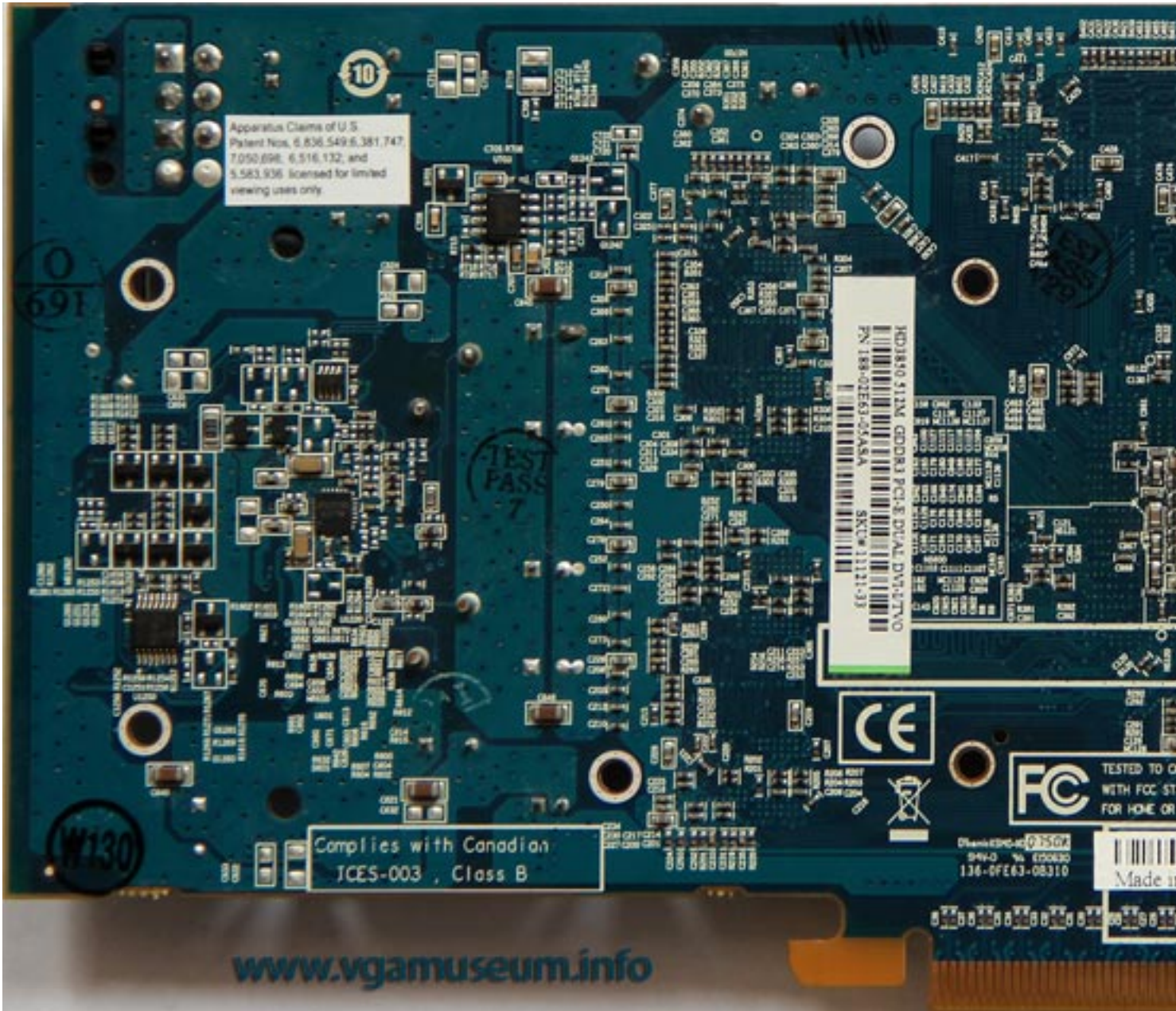
Sunday, 22 January 2012 15:26 - Last Updated Monday, 06 May 2013 22:42



ATI Radeon HD 3850

Written by Vlask

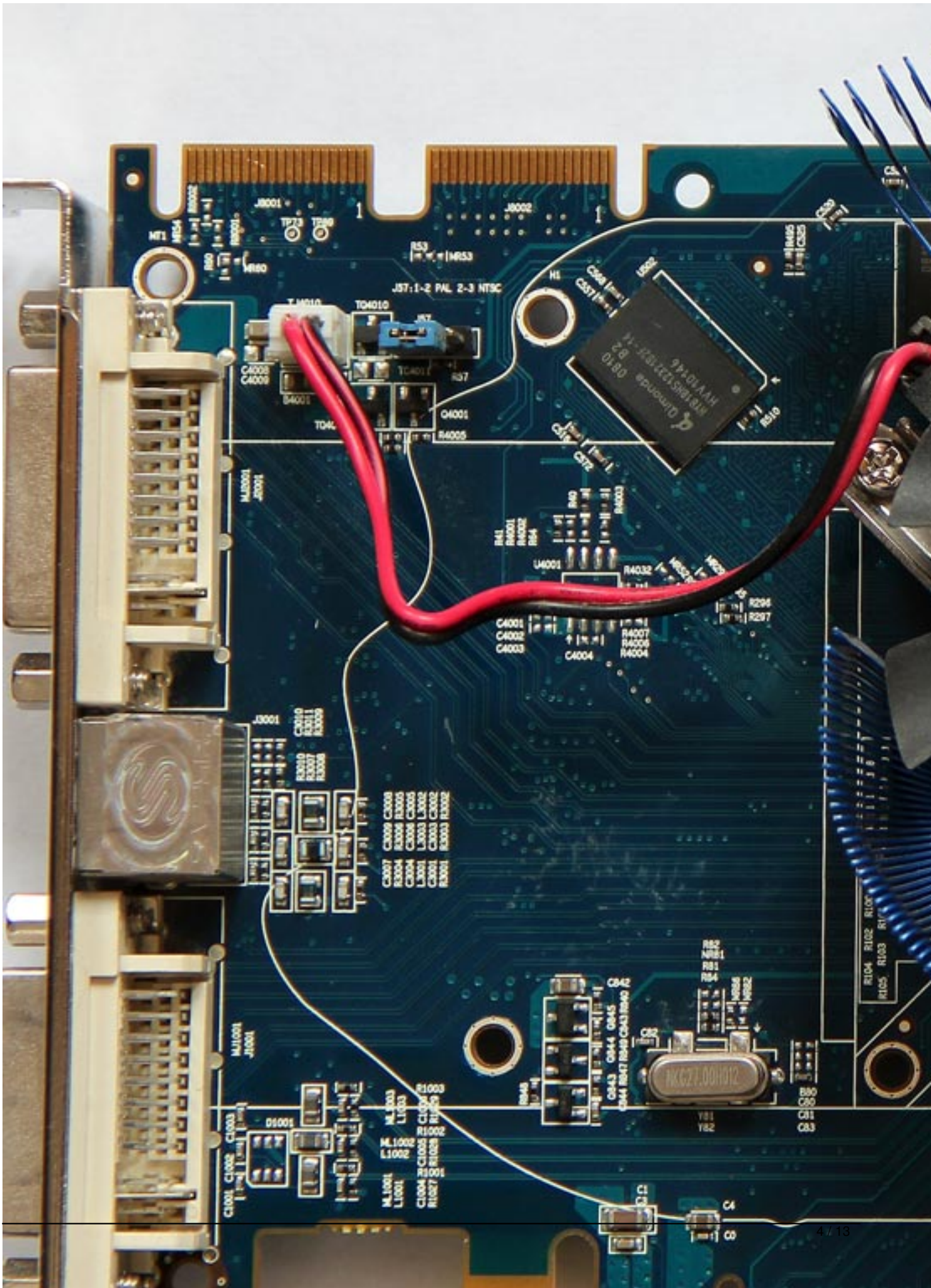
Sunday, 22 January 2012 15:26 - Last Updated Monday, 06 May 2013 22:42



ATI Radeon HD 3850

Written by Vlask

Sunday, 22 January 2012 15:26 - Last Updated Monday, 06 May 2013 22:42



ATI Radeon HD 3850

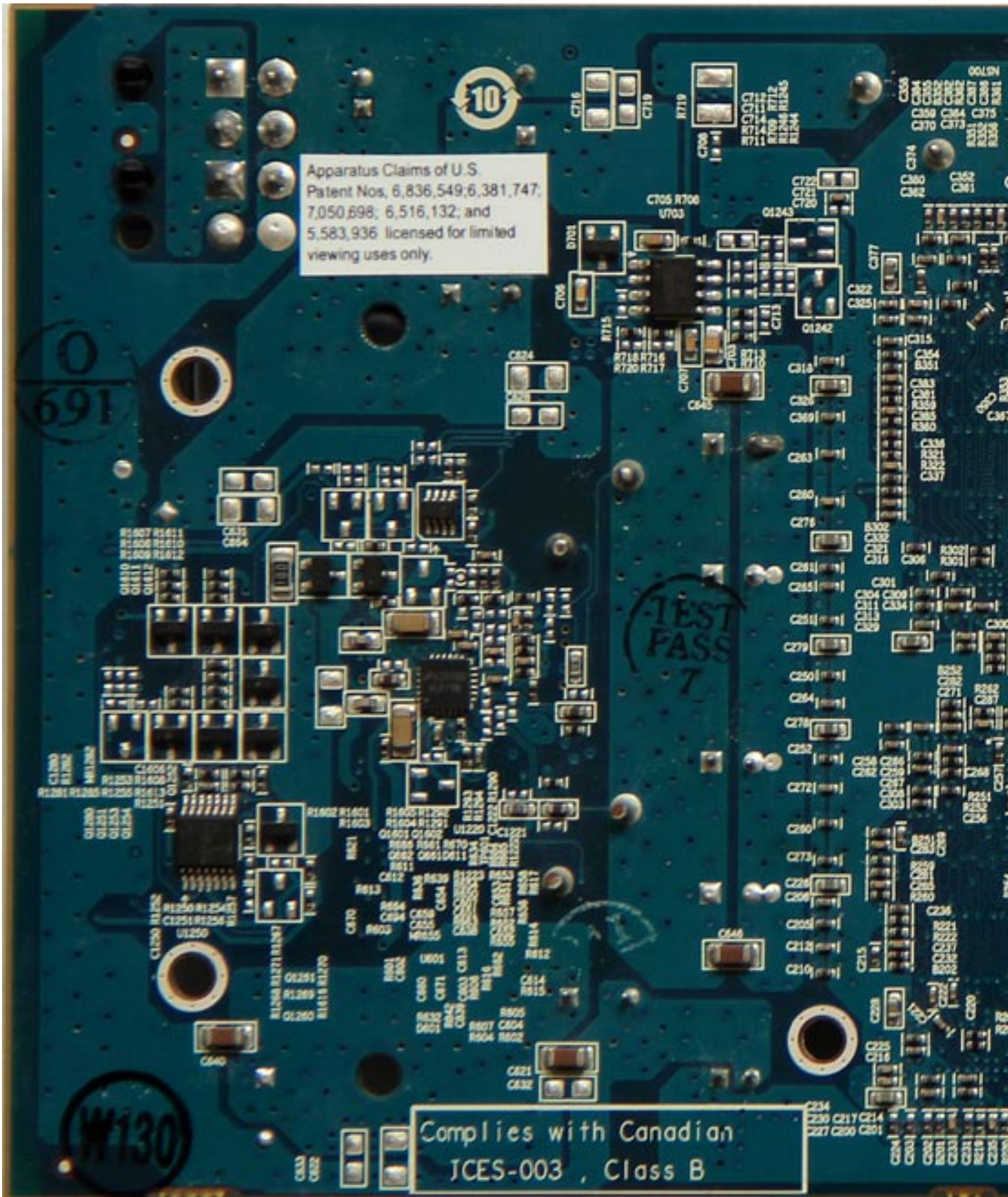
Written by Vlask

Sunday, 22 January 2012 15:26 - Last Updated Monday, 06 May 2013 22:42

ATI Radeon HD 3850

Written by Vlask

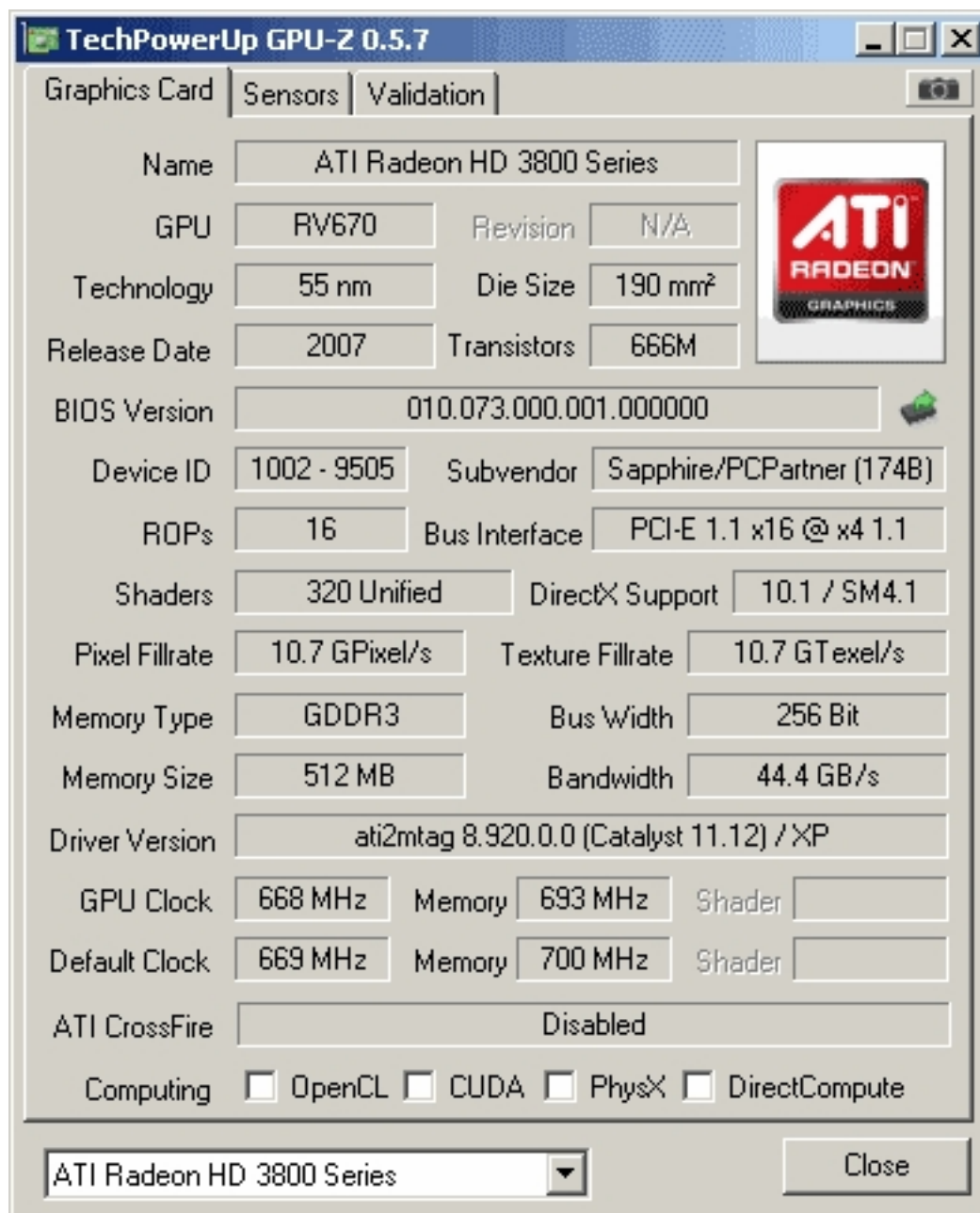
Sunday, 22 January 2012 15:26 - Last Updated Monday, 06 May 2013 22:42



ATI Radeon HD 3850

Written by Vlask

Sunday, 22 January 2012 15:26 - Last Updated Monday, 06 May 2013 22:42



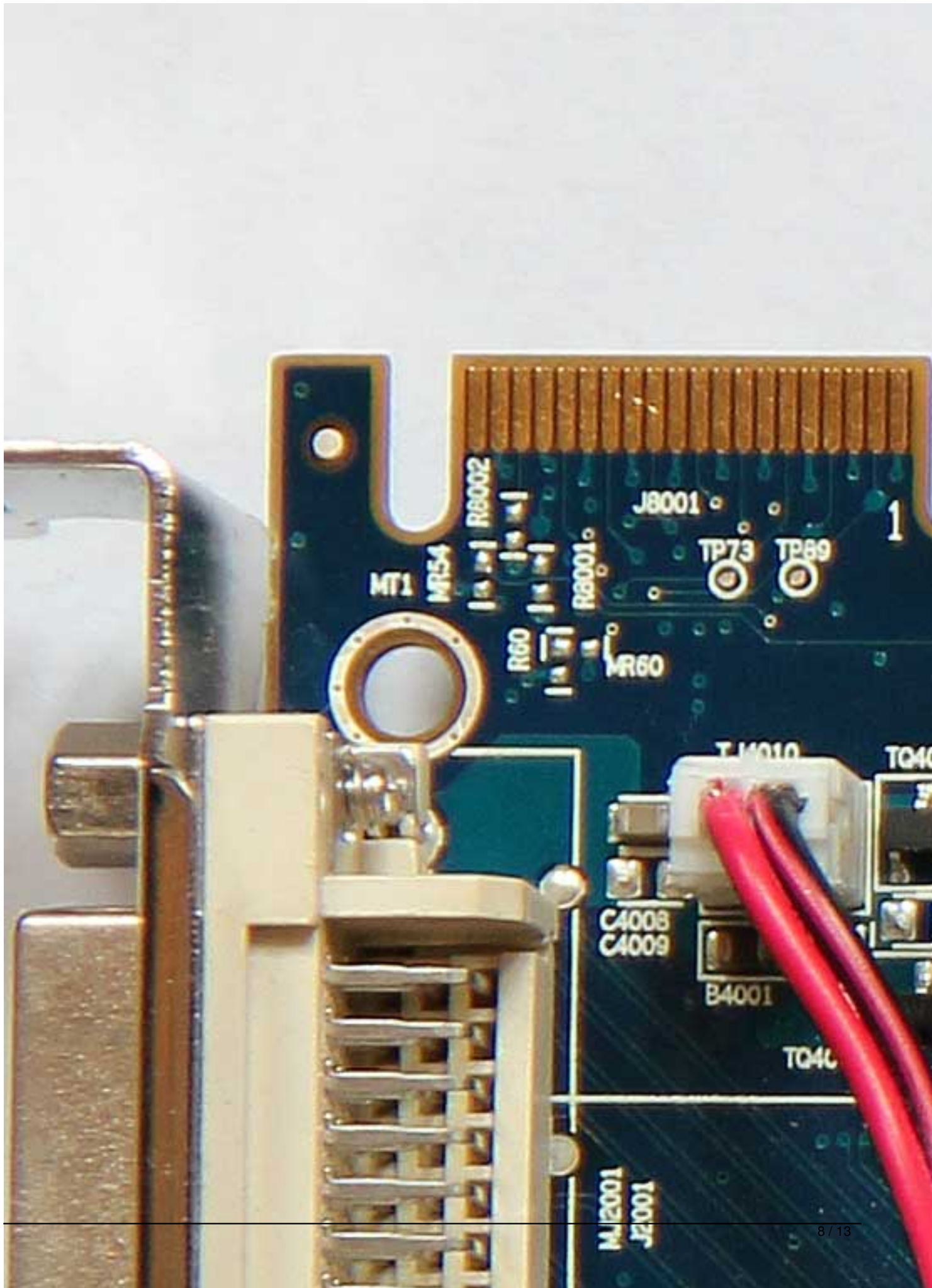
The screenshot displays the TechPowerUp GPU-Z 0.5.7 application window. The 'Graphics Card' tab is selected, showing detailed specifications for an ATI Radeon HD 3800 Series. The interface includes a top navigation bar with 'Graphics Card', 'Sensors', and 'Validation' tabs. A central area contains various fields for GPU information, such as Name, GPU, Technology, Release Date, BIOS Version, Device ID, ROPs, Shaders, Pixel Fillrate, Memory Type, Memory Size, Driver Version, GPU Clock, Default Clock, and ATI CrossFire. A 'Computing' section at the bottom has checkboxes for OpenCL, CUDA, PhysX, and DirectCompute. A 'Close' button is located at the bottom right. The ATI Radeon logo is visible on the right side of the window.

Field	Value
Name	ATI Radeon HD 3800 Series
GPU	RV670
Revision	N/A
Technology	55 nm
Die Size	190 mm ²
Release Date	2007
Transistors	666M
BIOS Version	010.073.000.001.000000
Device ID	1002 - 9505
Subvendor	Sapphire/PCPartner (174B)
ROPs	16
Bus Interface	PCI-E 1.1 x16 @ x4 1.1
Shaders	320 Unified
DirectX Support	10.1 / SM4.1
Pixel Fillrate	10.7 GPixel/s
Texture Fillrate	10.7 GTexel/s
Memory Type	GDDR3
Bus Width	256 Bit
Memory Size	512 MB
Bandwidth	44.4 GB/s
Driver Version	ati2mtag 8.920.0.0 (Catalyst 11.12) / XP
GPU Clock	668 MHz
Memory	693 MHz
Shader	
Default Clock	669 MHz
Memory	700 MHz
Shader	
ATI CrossFire	Disabled
Computing	<input type="checkbox"/> OpenCL <input type="checkbox"/> CUDA <input type="checkbox"/> PhysX <input type="checkbox"/> DirectCompute

ATI Radeon HD 3850

Written by Vlask

Sunday, 22 January 2012 15:26 - Last Updated Monday, 06 May 2013 22:42



ATI Radeon HD 3850

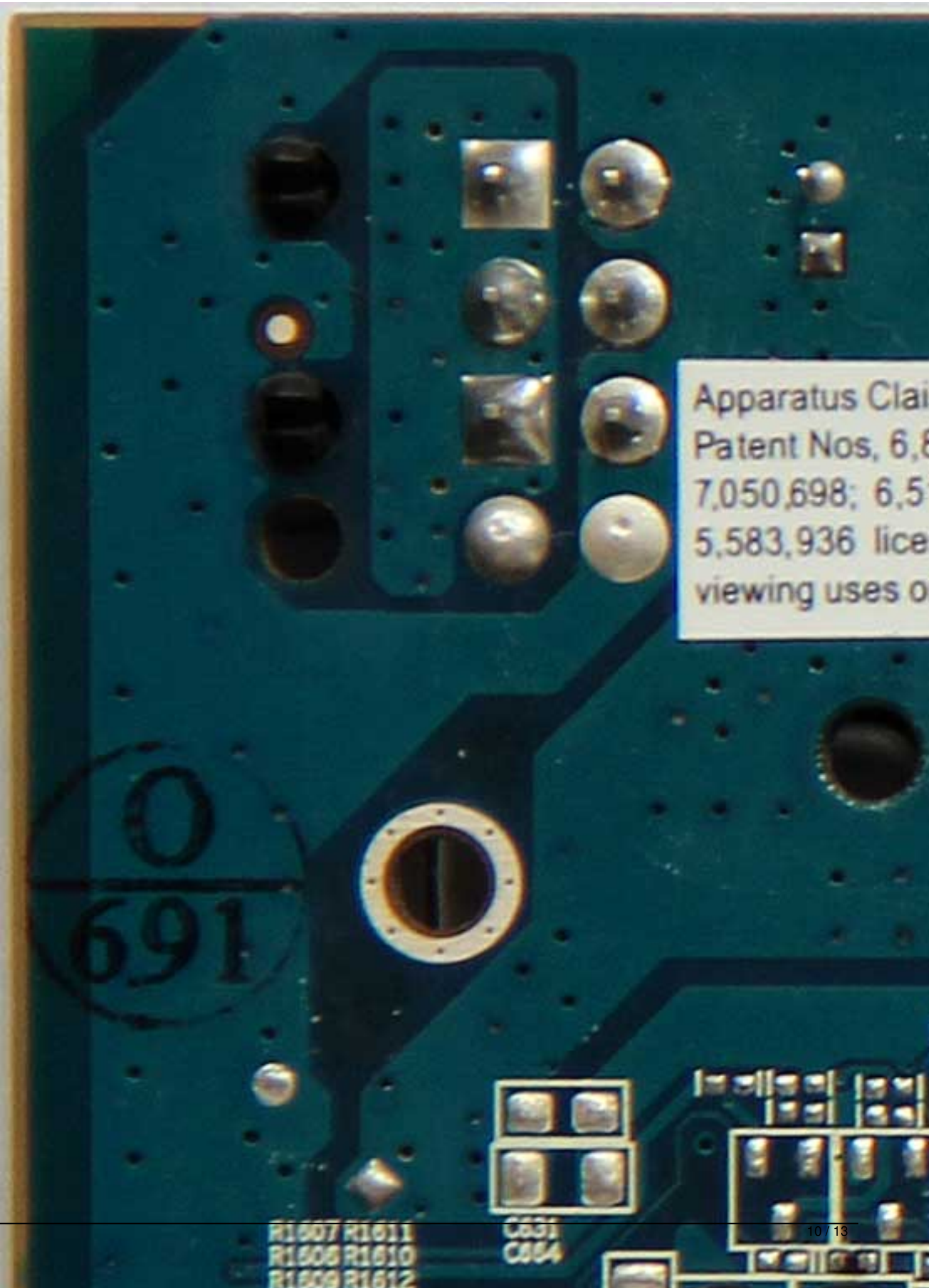
Written by Vlask

Sunday, 22 January 2012 15:26 - Last Updated Monday, 06 May 2013 22:42

ATI Radeon HD 3850

Written by Vlask

Sunday, 22 January 2012 15:26 - Last Updated Monday, 06 May 2013 22:42



Apparatus Clai
Patent Nos, 6,8
7,050,698; 6,5
5,583,936 lice
viewing uses o

0
691

R1607 R1611
R1608 R1610
R1609 R1612

C631
C654

ATI Radeon HD 3850

Written by Vlask

Sunday, 22 January 2012 15:26 - Last Updated Monday, 06 May 2013 22:42

ATI Radeon HD 3850

Written by Vlask

Sunday, 22 January 2012 15:26 - Last Updated Monday, 06 May 2013 22:42

{/webgallery}