

ATI Radeon 9600

Written by Vlask

Thursday, 18 March 2010 22:12 - Last Updated Monday, 06 May 2013 22:49



Core: RV350 324MHz ?bit

Memory: 128MB DDR 391,5MHz 128bit

Year: 2003 **Bus:** AGP 8x

Made: TSMC 130nm Taiwan **Links:** [UltimateHW](#) [Wikipedia](#)

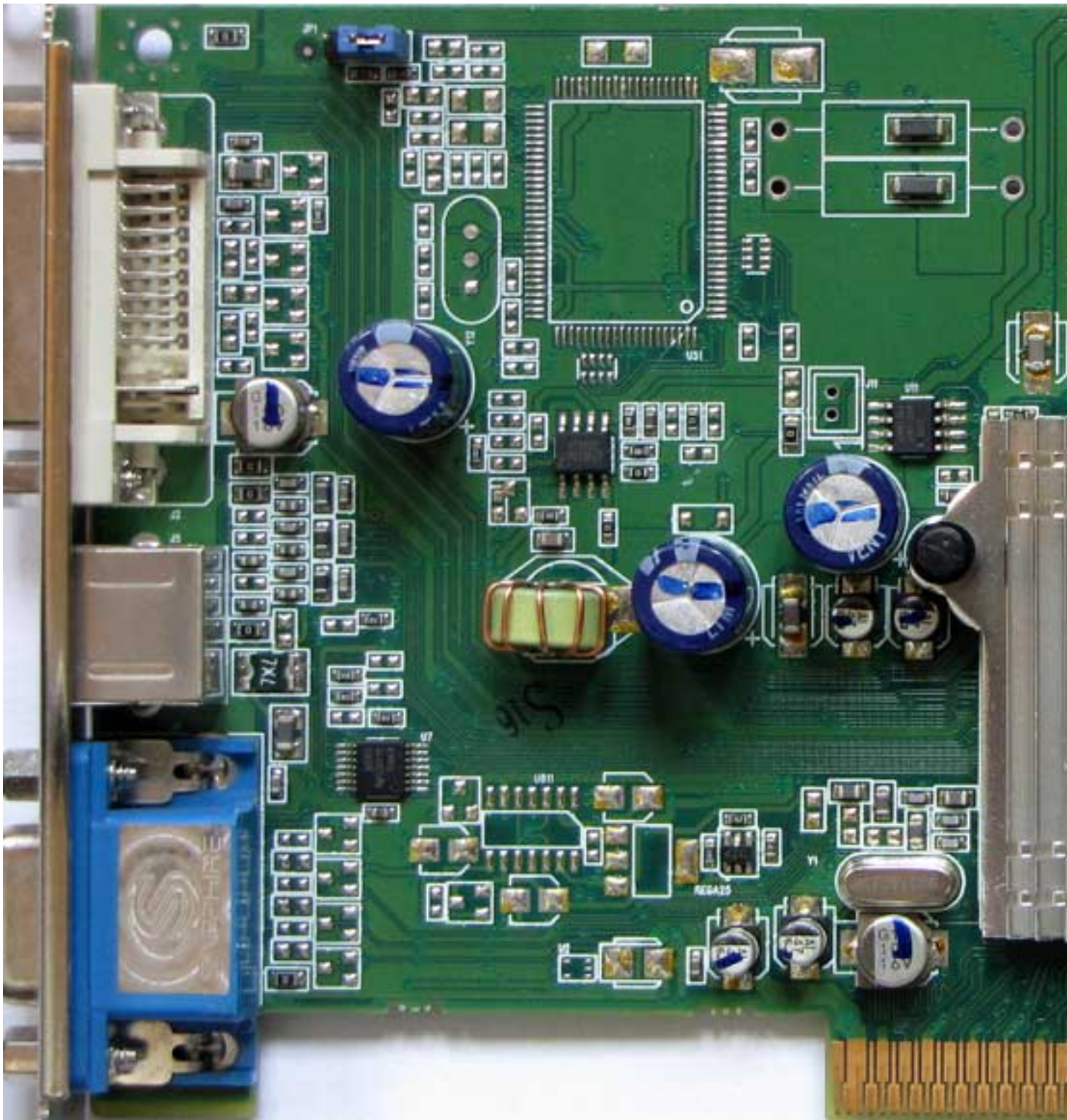
Bios: [Sapphire](#)

{webgallery}

ATI Radeon 9600

Written by Vlask

Thursday, 18 March 2010 22:12 - Last Updated Monday, 06 May 2013 22:49



ATI Radeon 9600

Written by Vlask

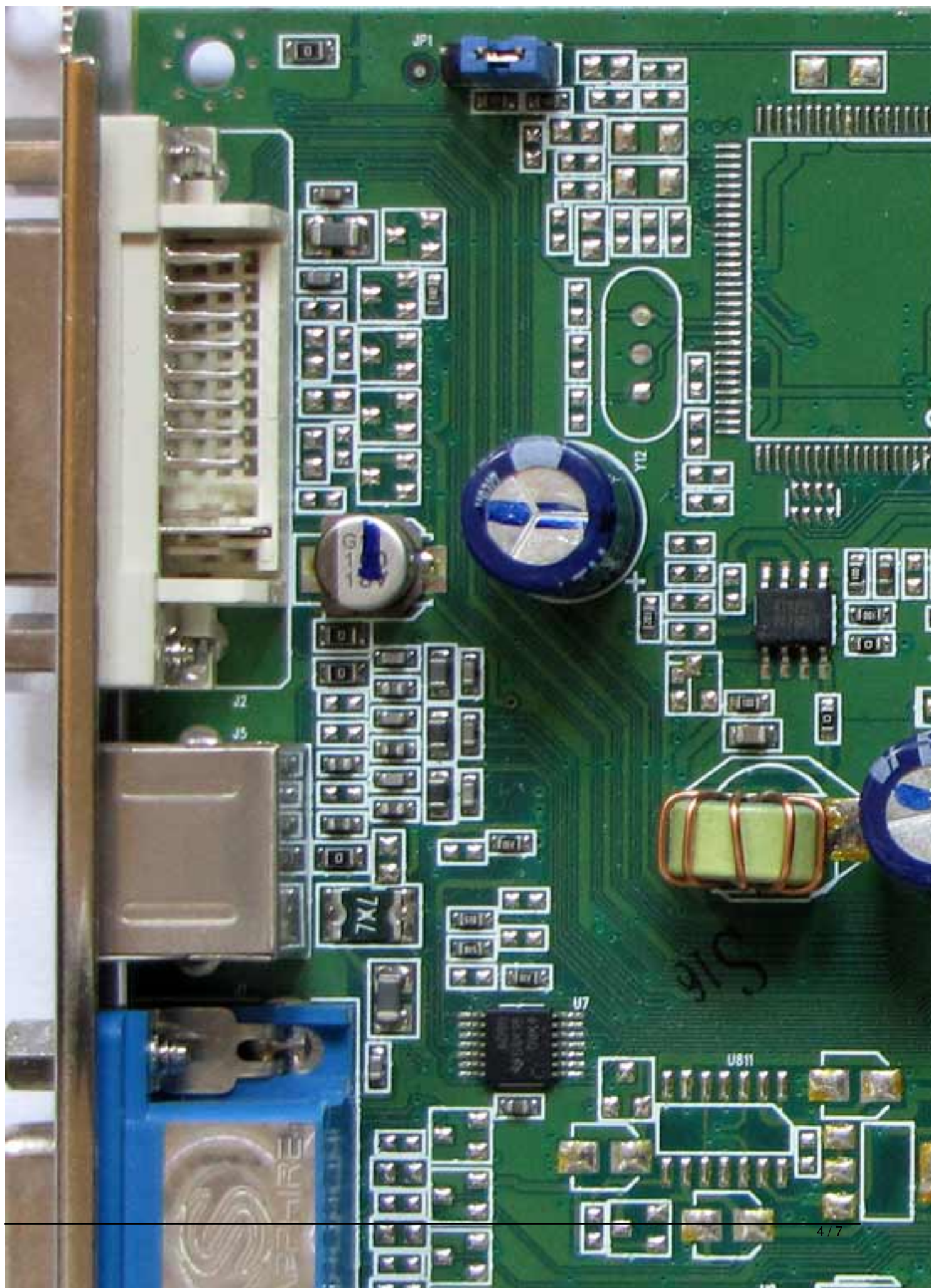
Thursday, 18 March 2010 22:12 - Last Updated Monday, 06 May 2013 22:49



ATI Radeon 9600

Written by Vlask

Thursday, 18 March 2010 22:12 - Last Updated Monday, 06 May 2013 22:49



ATI Radeon 9600

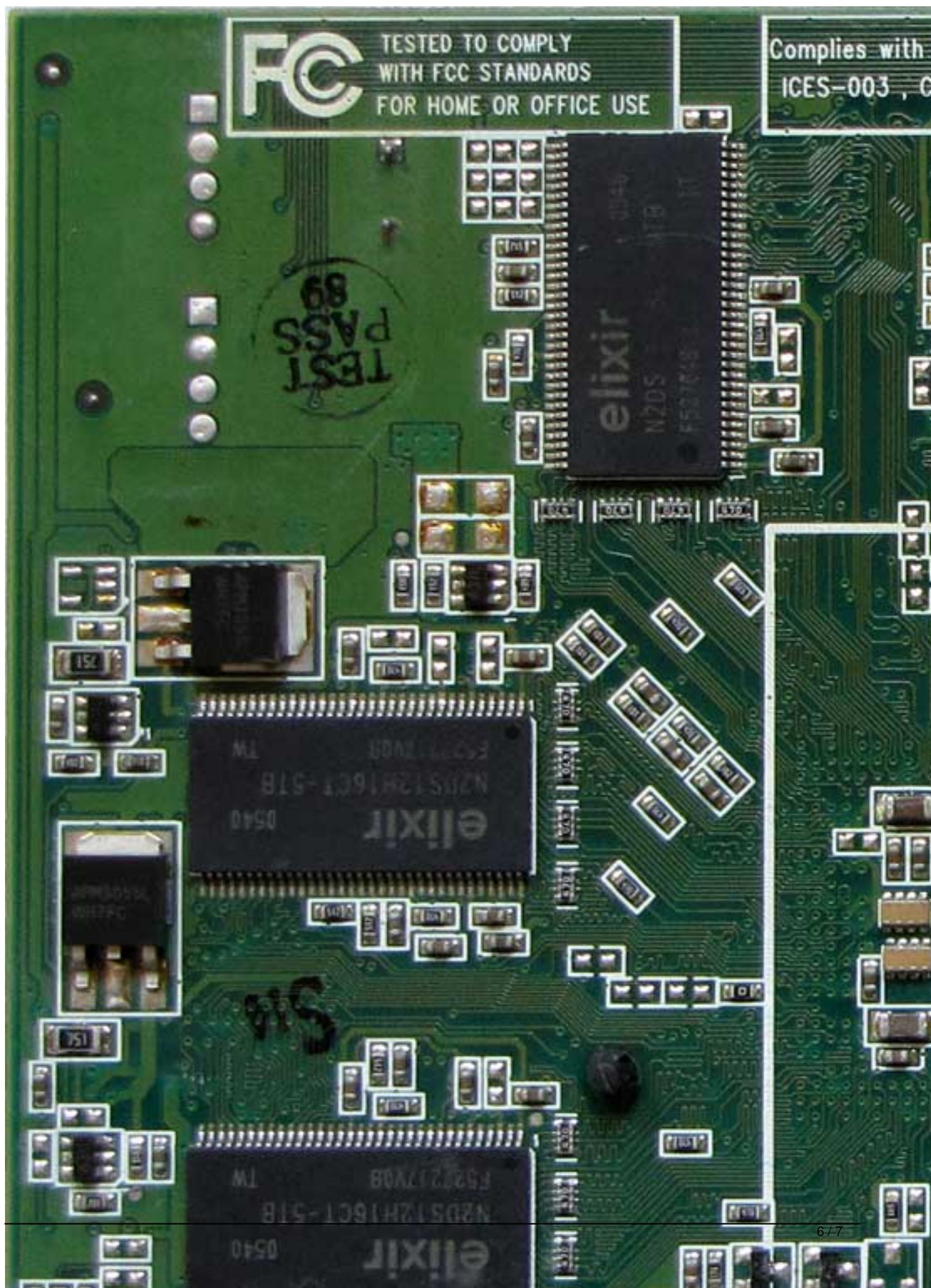
Written by Vlask

Thursday, 18 March 2010 22:12 - Last Updated Monday, 06 May 2013 22:49

ATI Radeon 9600

Written by Vlask

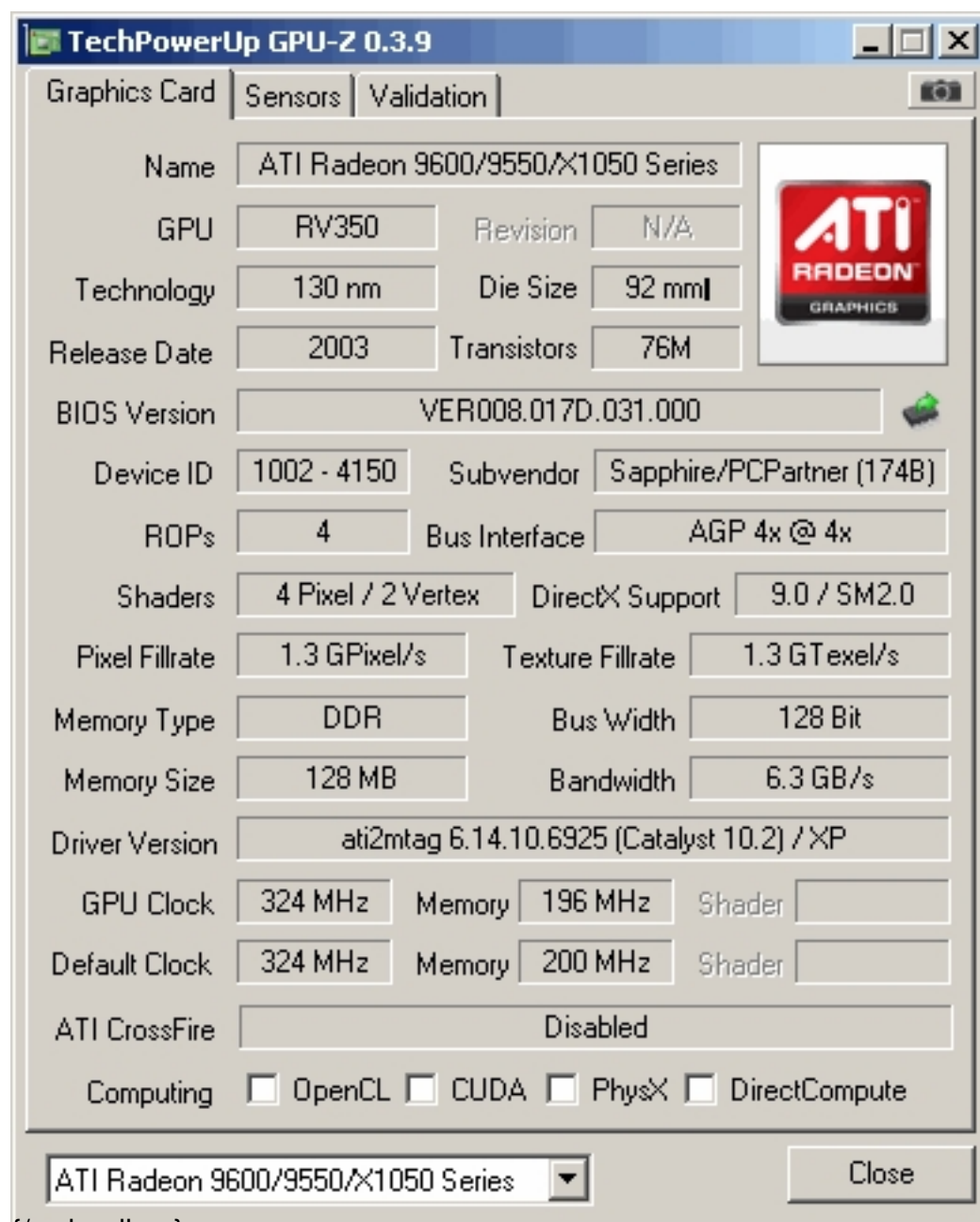
Thursday, 18 March 2010 22:12 - Last Updated Monday, 06 May 2013 22:49



ATI Radeon 9600

Written by Vlask

Thursday, 18 March 2010 22:12 - Last Updated Monday, 06 May 2013 22:49



The screenshot shows the TechPowerUp GPU-Z 0.3.9 application window. The 'Graphics Card' tab is selected, displaying the following specifications:

Category	Value
Name	ATI Radeon 9600/9550/X1050 Series
GPU	RV350
Revision	N/A
Technology	130 nm
Die Size	92 mm ²
Release Date	2003
Transistors	76M
BIOS Version	VER008.017D.031.000
Device ID	1002 - 4150
Subvendor	Sapphire/PCPartner (174B)
ROPs	4
Bus Interface	AGP 4x @ 4x
Shaders	4 Pixel / 2 Vertex
DirectX Support	9.0 / SM2.0
Pixel Fillrate	1.3 GPixel/s
Texture Fillrate	1.3 GTexel/s
Memory Type	DDR
Bus Width	128 Bit
Memory Size	128 MB
Bandwidth	6.3 GB/s
Driver Version	ati2mtag 6.14.10.6925 (Catalyst 10.2) / XP
GPU Clock	324 MHz
Memory	196 MHz
Shader	
Default Clock	324 MHz
Memory	200 MHz
Shader	
ATI CrossFire	Disabled
Computing	<input type="checkbox"/> OpenCL <input type="checkbox"/> CUDA <input type="checkbox"/> PhysX <input type="checkbox"/> DirectCompute

At the bottom, there is a dropdown menu showing 'ATI Radeon 9600/9550/X1050 Series' and a 'Close' button.

{/webgallery}