

## ATI Rage 128 Pro

Written by Vlask

Sunday, 27 September 2009 11:30 - Last Updated Saturday, 27 July 2013 22:14

---



**Core:** ATI Rage 128 Pro 120MHz 128bit

**Memory:** 32MB SDR 120MHz 64bit

**Year:** 1999 **Bus:** AGP 4x

**Made:** 250nm **Links:** [Press](#) [AiW](#) [AiW review](#) [Tom's Hardware](#) [Opengl](#) [Register guide](#) **Pri**

**ce:**

\$99, AiW-\$279

**Bios:** [Ati](#) [AiW](#)

**Variants:** All-in-Wonder 128 PRO - 32MB SDR 140MHz 64bit, core 118MHz

ATI Rage 128 Pro GL - 16MB SDR 110MHz, core 110MHz

ATI Rage 128P 16M - 16MB SDR 130MHz, core 130MHz

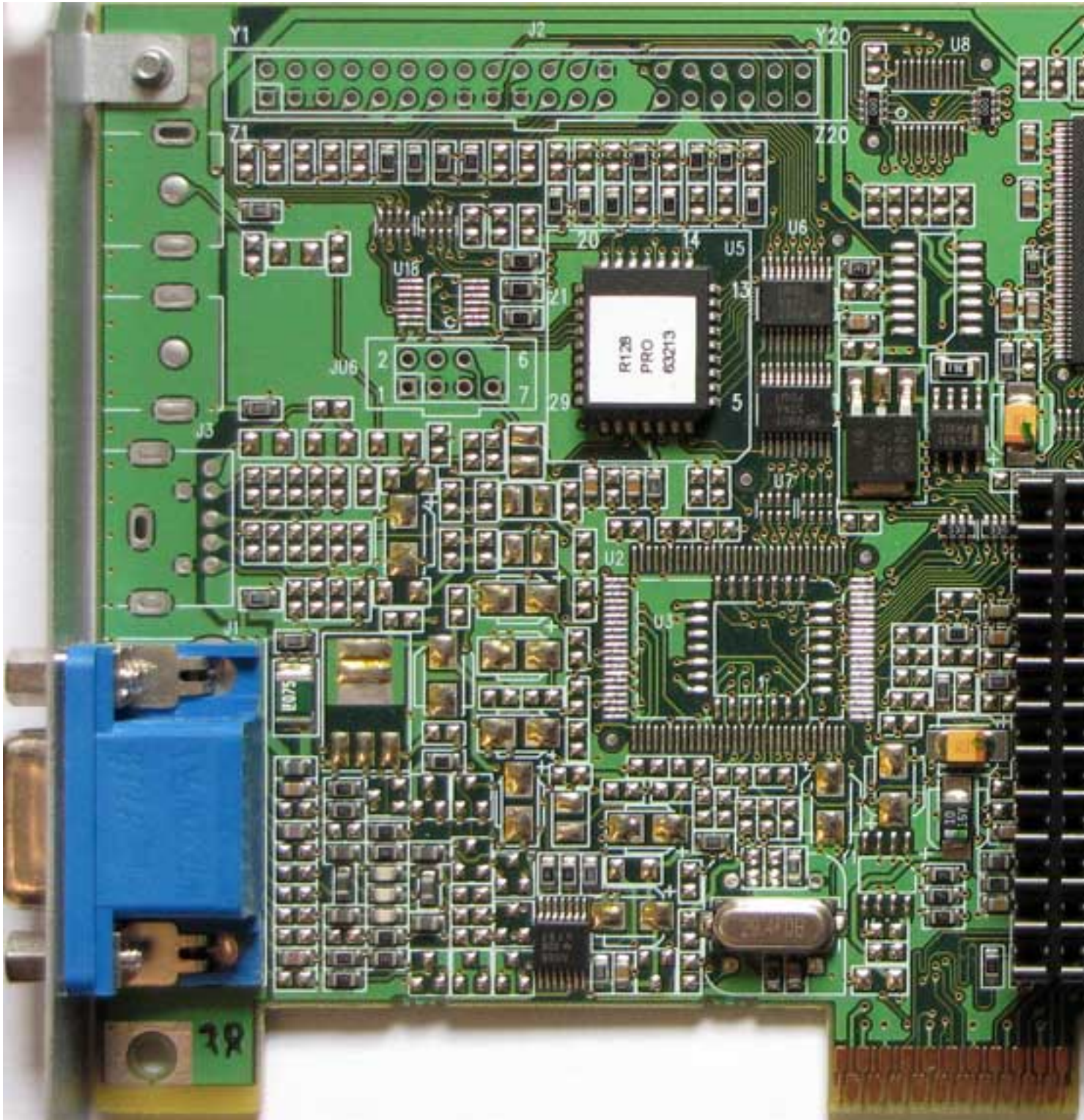
{webgallery}

# ATI Rage 128 Pro

Written by Vlask

Sunday, 27 September 2009 11:30 - Last Updated Saturday, 27 July 2013 22:14

---





# ATI Rage 128 Pro

Written by Vlask

Sunday, 27 September 2009 11:30 - Last Updated Saturday, 27 July 2013 22:14

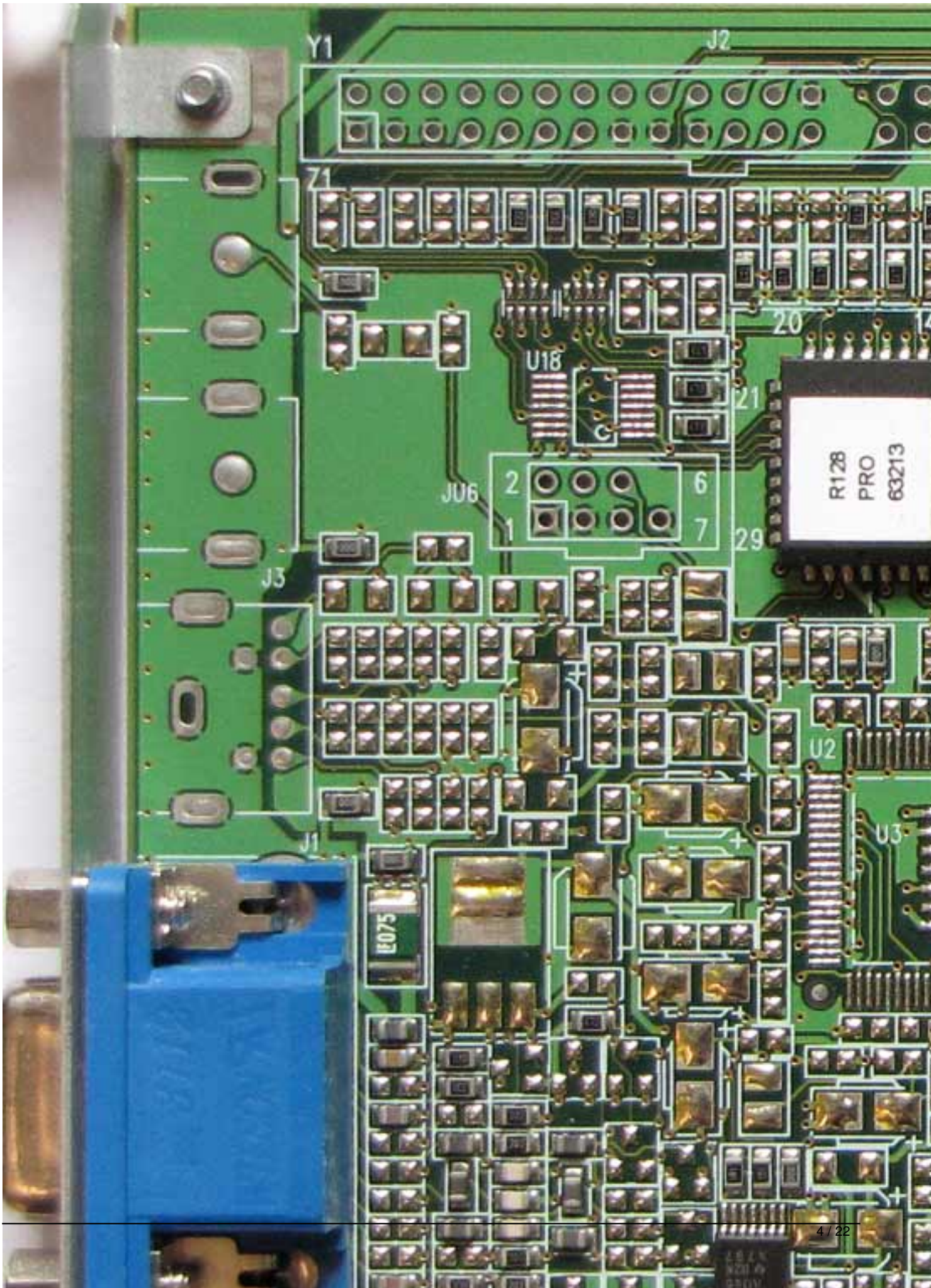




# ATI Rage 128 Pro

Written by Vlask

Sunday, 27 September 2009 11:30 - Last Updated Saturday, 27 July 2013 22:14



## ATI Rage 128 Pro

Written by Vlask

Sunday, 27 September 2009 11:30 - Last Updated Saturday, 27 July 2013 22:14

---



# ATI Rage 128 Pro

Written by Vlask

Sunday, 27 September 2009 11:30 - Last Updated Saturday, 27 July 2013 22:14

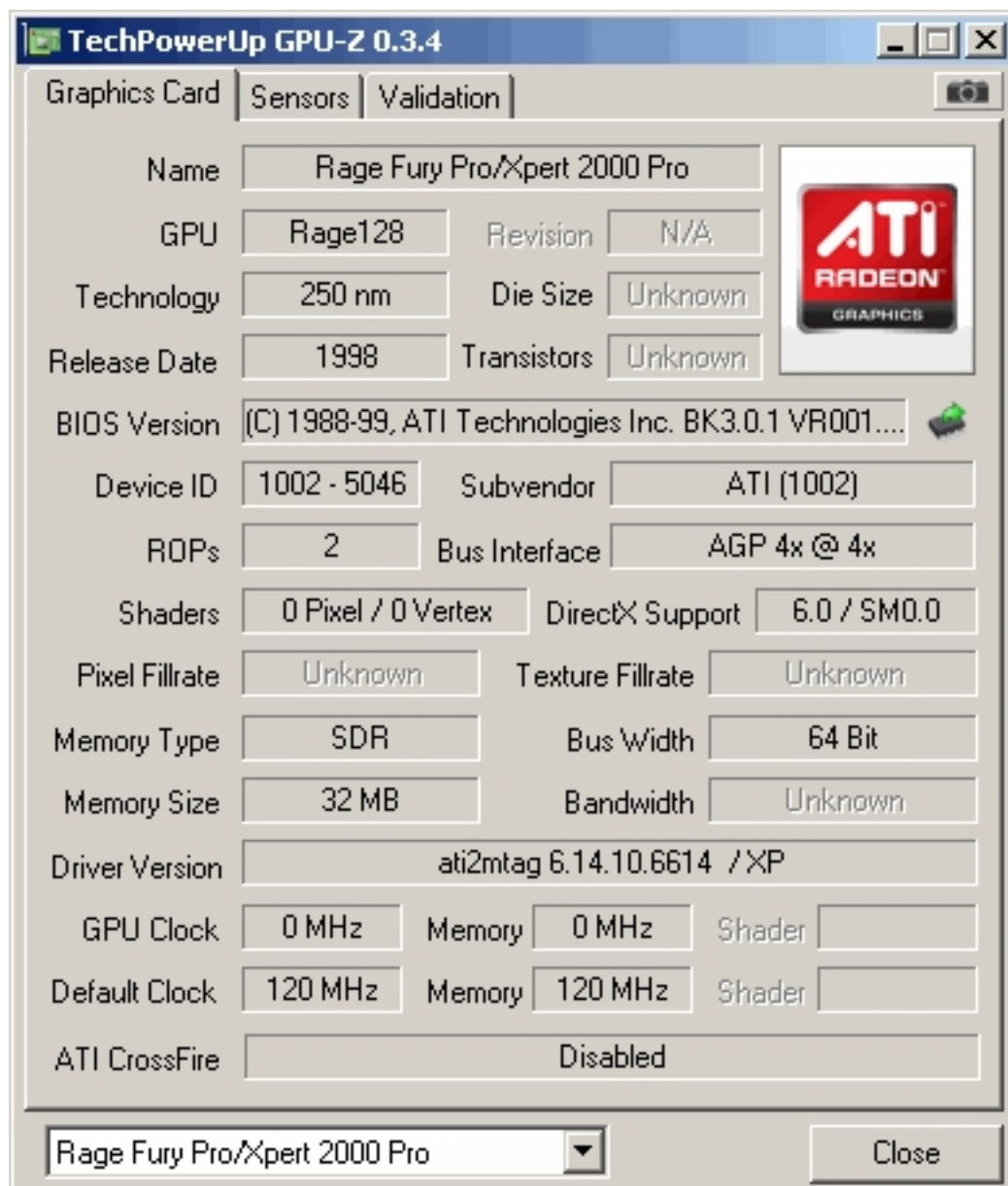
---



## ATI Rage 128 Pro

Written by Vlask

Sunday, 27 September 2009 11:30 - Last Updated Saturday, 27 July 2013 22:14



The screenshot displays the TechPowerUp GPU-Z 0.3.4 application window. The 'Graphics Card' tab is selected, showing detailed specifications for an ATI Rage Fury Pro/Xpert 2000 Pro. The interface includes a top navigation bar with 'Graphics Card', 'Sensors', and 'Validation' tabs. A central area contains various fields for GPU information, such as Name, GPU, Technology, Release Date, BIOS Version, Device ID, ROPs, Shaders, Pixel Fillrate, Memory Type, Memory Size, Driver Version, GPU Clock, Default Clock, and ATI CrossFire. An ATI RADEON GRAPHICS logo is visible on the right side. At the bottom, there is a dropdown menu showing the selected card name and a 'Close' button.

Field	Value
Name	Rage Fury Pro/Xpert 2000 Pro
GPU	Rage128
Revision	N/A
Technology	250 nm
Die Size	Unknown
Release Date	1998
Transistors	Unknown
BIOS Version	(C) 1988-99, ATI Technologies Inc. BK3.0.1 VR001....
Device ID	1002 - 5046
Subvendor	ATI (1002)
ROPs	2
Bus Interface	AGP 4x @ 4x
Shaders	0 Pixel / 0 Vertex
DirectX Support	6.0 / SM0.0
Pixel Fillrate	Unknown
Texture Fillrate	Unknown
Memory Type	SDR
Bus Width	64 Bit
Memory Size	32 MB
Bandwidth	Unknown
Driver Version	ati2mtag 6.14.10.6614 / XP
GPU Clock	0 MHz
Memory	0 MHz
Shader	
Default Clock	120 MHz
Memory	120 MHz
Shader	
ATI CrossFire	Disabled

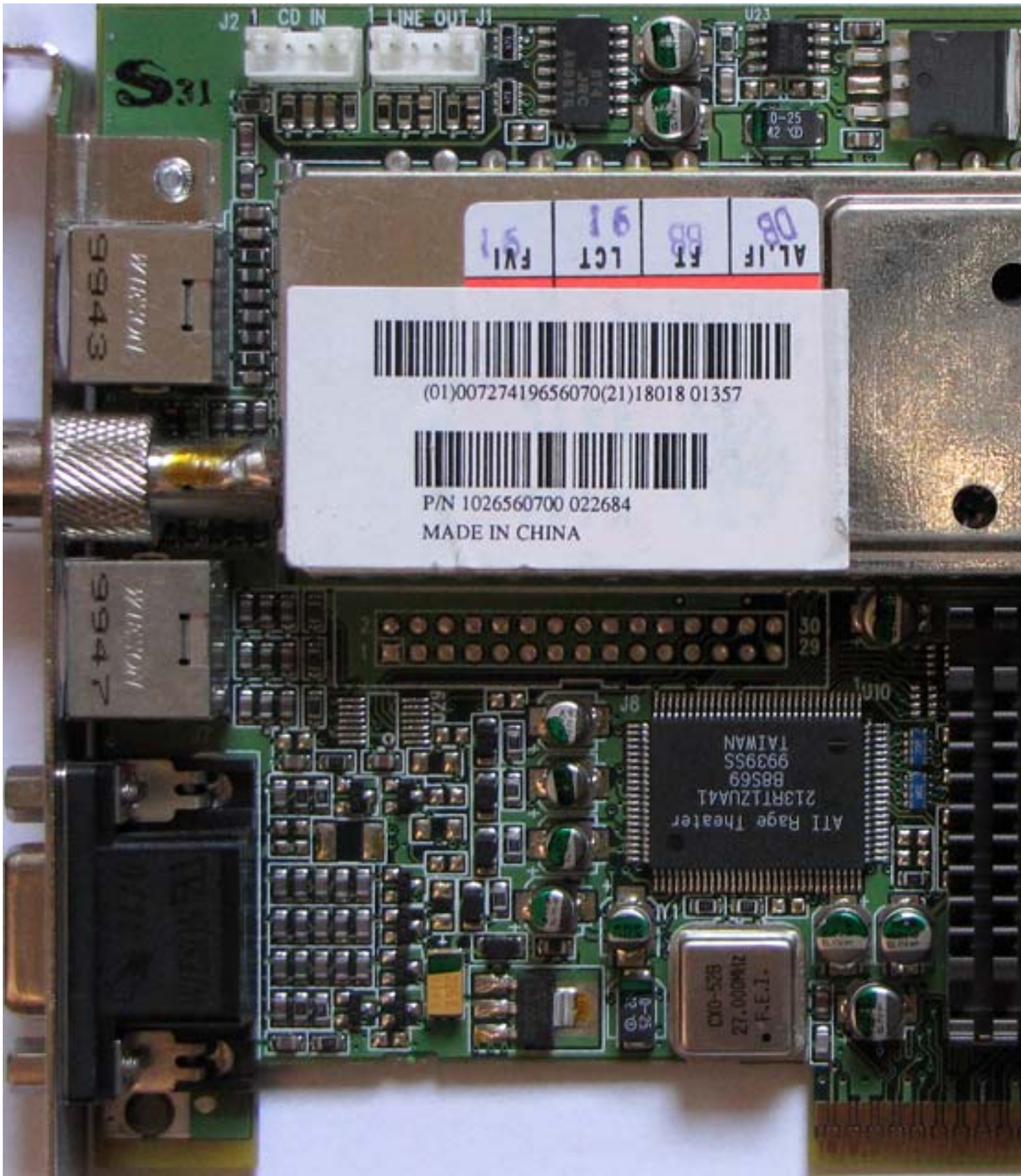


# ATI Rage 128 Pro

Written by Vlask

Sunday, 27 September 2009 11:30 - Last Updated Saturday, 27 July 2013 22:14

---

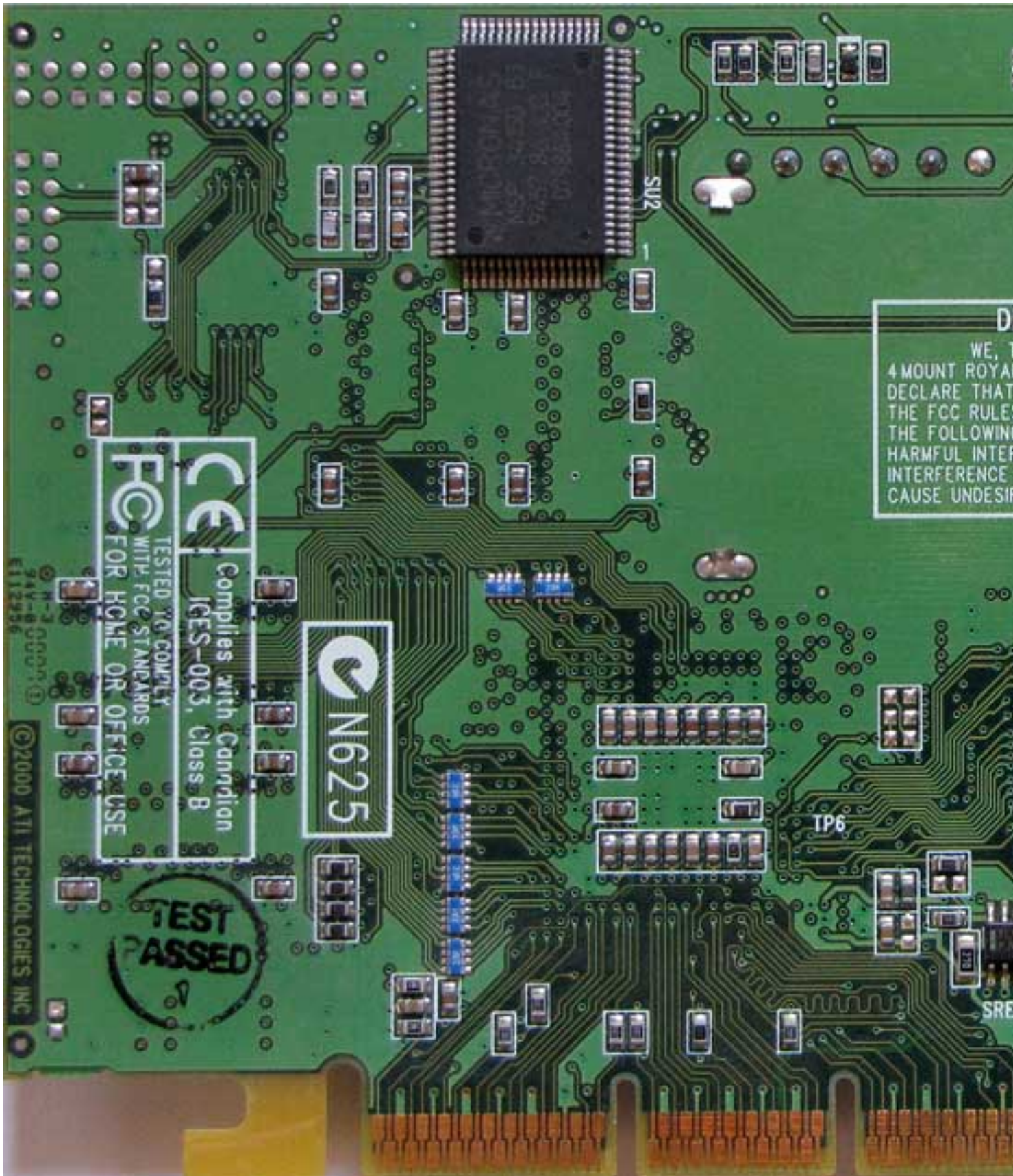




# ATI Rage 128 Pro

Written by Vlask

Sunday, 27 September 2009 11:30 - Last Updated Saturday, 27 July 2013 22:14





# ATI Rage 128 Pro

Written by Vlask

Sunday, 27 September 2009 11:30 - Last Updated Saturday, 27 July 2013 22:14





# ATI Rage 128 Pro

Written by Vlask

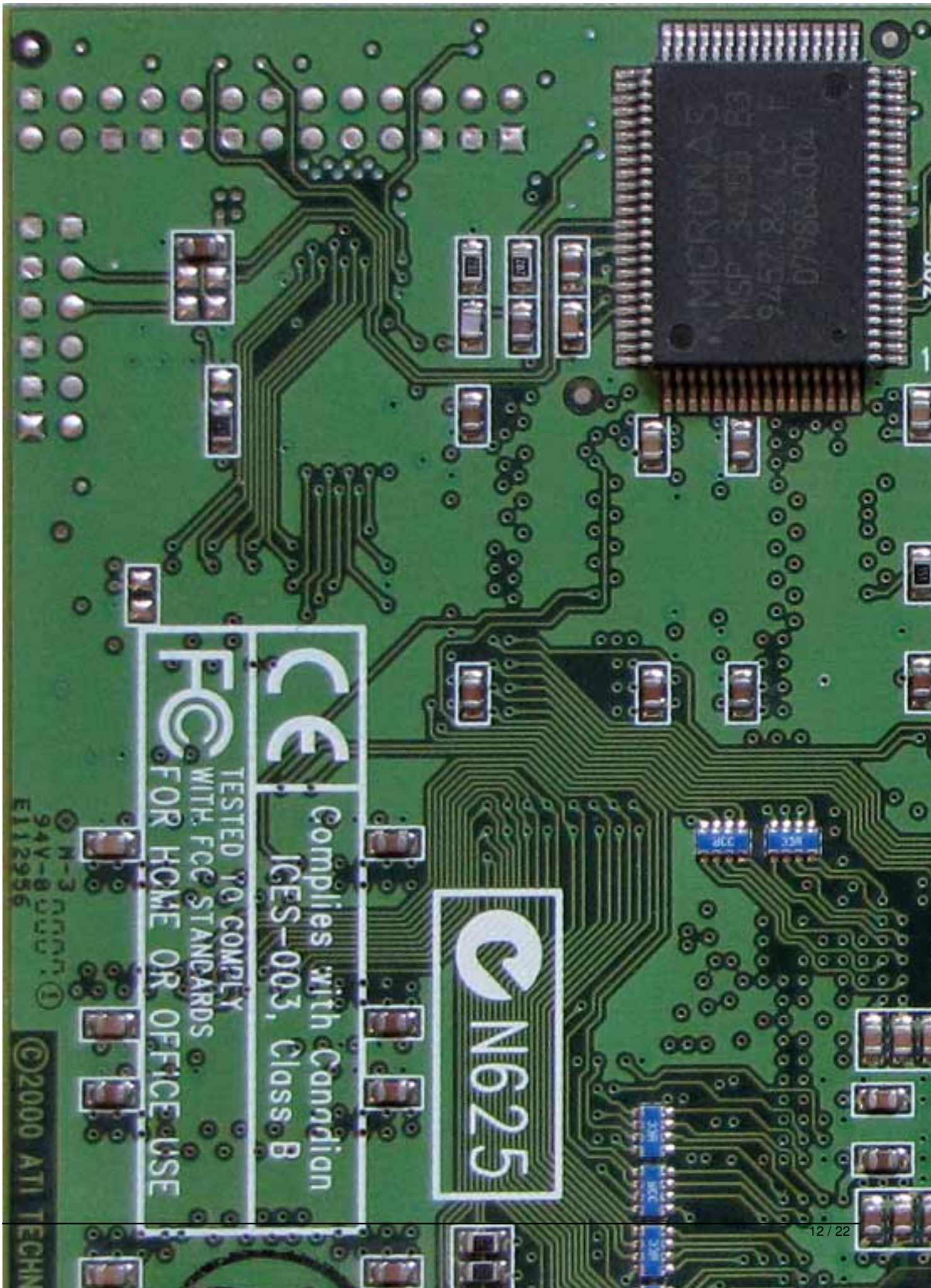
Sunday, 27 September 2009 11:30 - Last Updated Saturday, 27 July 2013 22:14

---

# ATI Rage 128 Pro

Written by Vlask

Sunday, 27 September 2009 11:30 - Last Updated Saturday, 27 July 2013 22:14



  
N625

Complies with Canadian  
ICES-003, Class B

TESTED TO COMPLY  
WITH FCC STANDARDS  
FOR HOME OR OFFICE USE

M-3 00001  
94V-0 00001  
E112956

©2000 ATI TECHNOLOGIES, INC.



## ATI Rage 128 Pro

Written by Vlask

Sunday, 27 September 2009 11:30 - Last Updated Saturday, 27 July 2013 22:14

The screenshot shows the TechPowerUp GPU-Z 0.3.4 application window. The 'Graphics Card' tab is selected, displaying the following information:

Name	All-In-Wonder 128 Pro AGP				
GPU	Rage128	Revision	N/A		
Technology	250 nm	Die Size	Unknown		
Release Date	1998	Transistors	Unknown		
BIOS Version	(C) 1988-99, ATI Technologies Inc. BK2.0.2 VR001....				
Device ID	1002 - 5046	Subvendor	ATI (1002)		
ROPs	2	Bus Interface	AGP 4x @ 4x		
Shaders	0 Pixel / 0 Vertex	DirectX Support	6.0 / SM0.0		
Pixel Fillrate	Unknown	Texture Fillrate	Unknown		
Memory Type	SDR	Bus Width	64 Bit		
Memory Size	32 MB	Bandwidth	Unknown		
Driver Version	ati2mtag 6.14.10.6614 / XP				
GPU Clock	0 MHz	Memory	0 MHz	Shader	
Default Clock	118 MHz	Memory	140 MHz	Shader	
ATI CrossFire	Disabled				

At the bottom of the window, there is a dropdown menu showing 'All-In-Wonder 128 Pro AGP' and a 'Close' button.

# ATI Rage 128 Pro

Written by Vlask

Sunday, 27 September 2009 11:30 - Last Updated Saturday, 27 July 2013 22:14

---





# ATI Rage 128 Pro

Written by Vlask

Sunday, 27 September 2009 11:30 - Last Updated Saturday, 27 July 2013 22:14



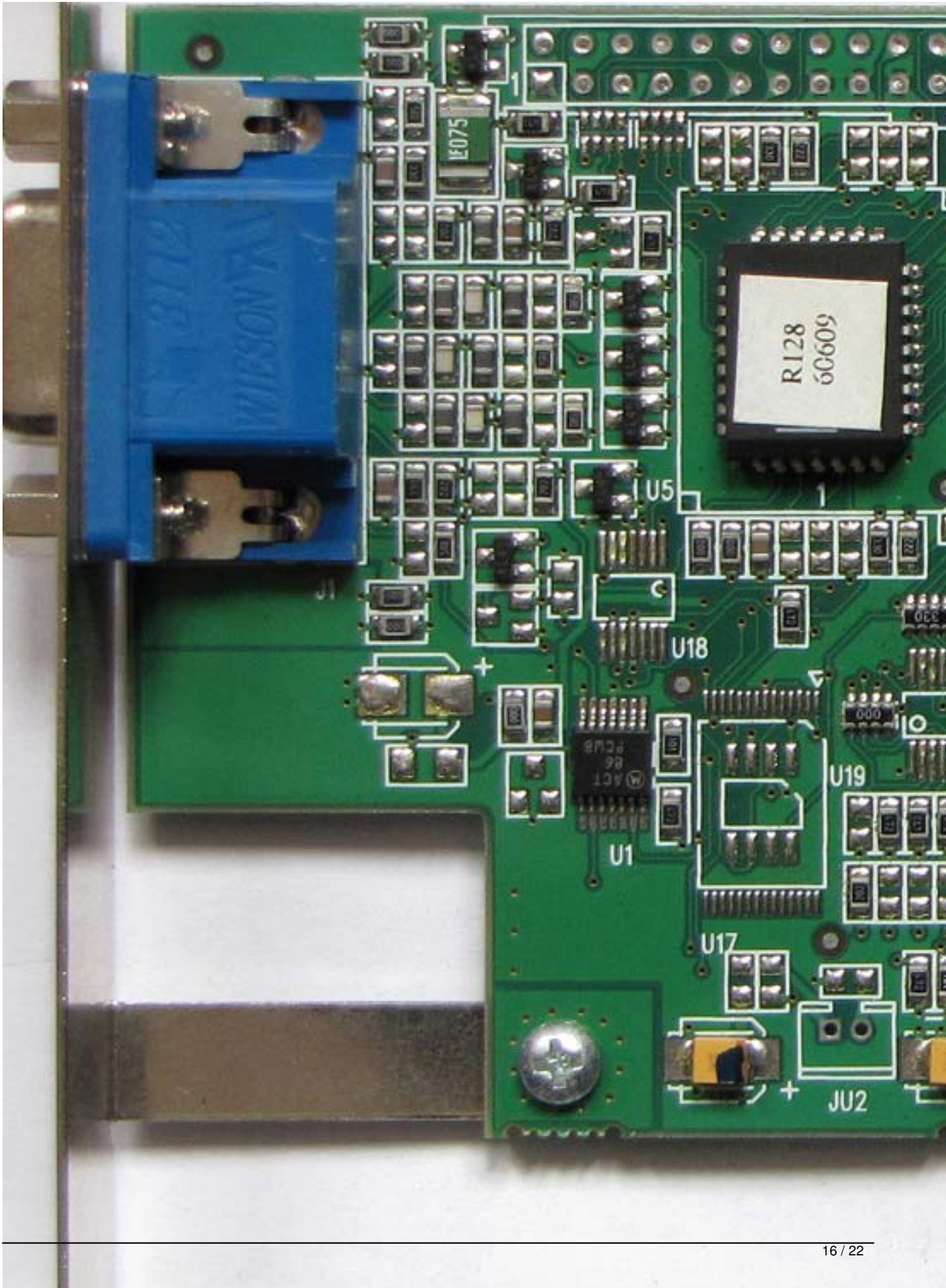


# ATI Rage 128 Pro

Written by Vlask

Sunday, 27 September 2009 11:30 - Last Updated Saturday, 27 July 2013 22:14

---





# ATI Rage 128 Pro

Written by Vlask

Sunday, 27 September 2009 11:30 - Last Updated Saturday, 27 July 2013 22:14

---

# ATI Rage 128 Pro

Written by Vlask

Sunday, 27 September 2009 11:30 - Last Updated Saturday, 27 July 2013 22:14



© 1999 ATI TECHNOLOGIES INC

CE

Complies with Canadian  
ICES-003, Class B

FCC

TESTED TO COMPLY  
WITH FCC STANDARDS  
FOR HOME OR OFFICE USE

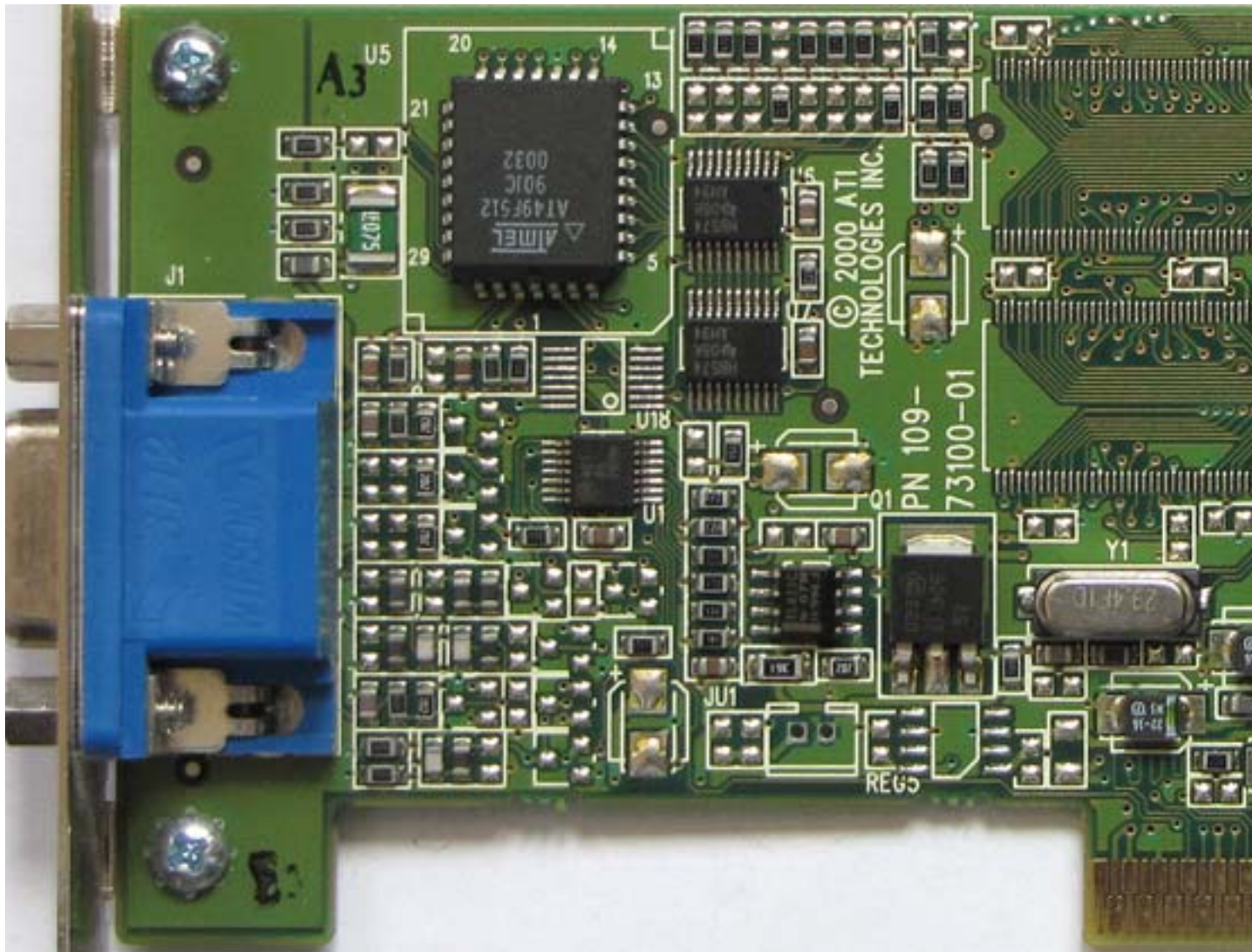


# ATI Rage 128 Pro

Written by Vlask

Sunday, 27 September 2009 11:30 - Last Updated Saturday, 27 July 2013 22:14

---



# ATI Rage 128 Pro

Written by Vlask

Sunday, 27 September 2009 11:30 - Last Updated Saturday, 27 July 2013 22:14



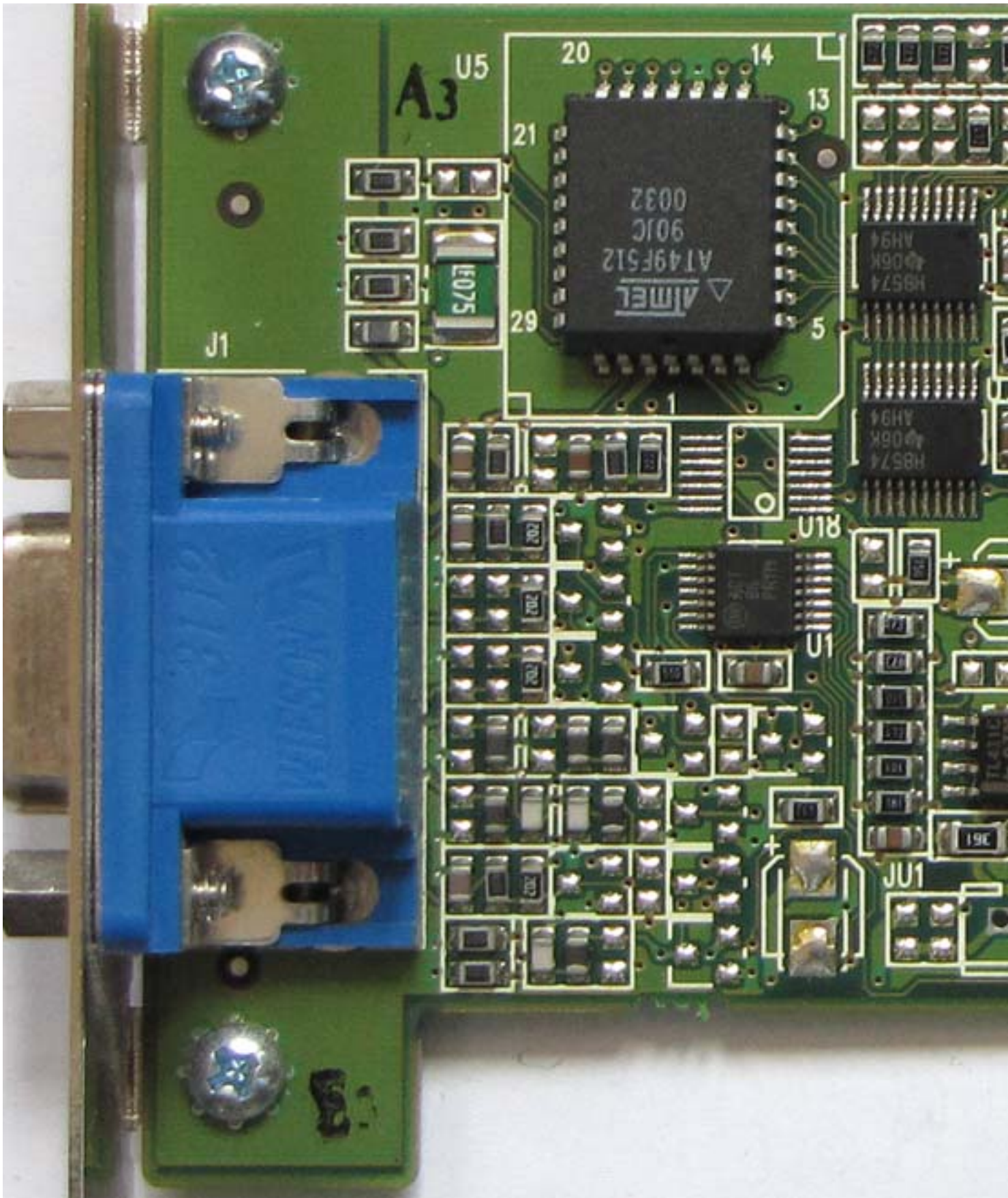


# ATI Rage 128 Pro

Written by Vlask

Sunday, 27 September 2009 11:30 - Last Updated Saturday, 27 July 2013 22:14

---





# ATI Rage 128 Pro

Written by Vlask

Sunday, 27 September 2009 11:30 - Last Updated Saturday, 27 July 2013 22:14



{/webgallery}