

ATI Radeon X300 SE

Written by Vlask

Saturday, 15 October 2011 15:50 - Last Updated Monday, 06 May 2013 22:47



Core: RV370 324MHz ?bit

Memory: 128MB DDR 392MHz 64bit

Year: 2004 **Bus:** PCI-E 16x

Made: TSMC 110nm **Links:** [MSI](#) [HW secrets](#) [Hexus](#) [OpenGL](#)

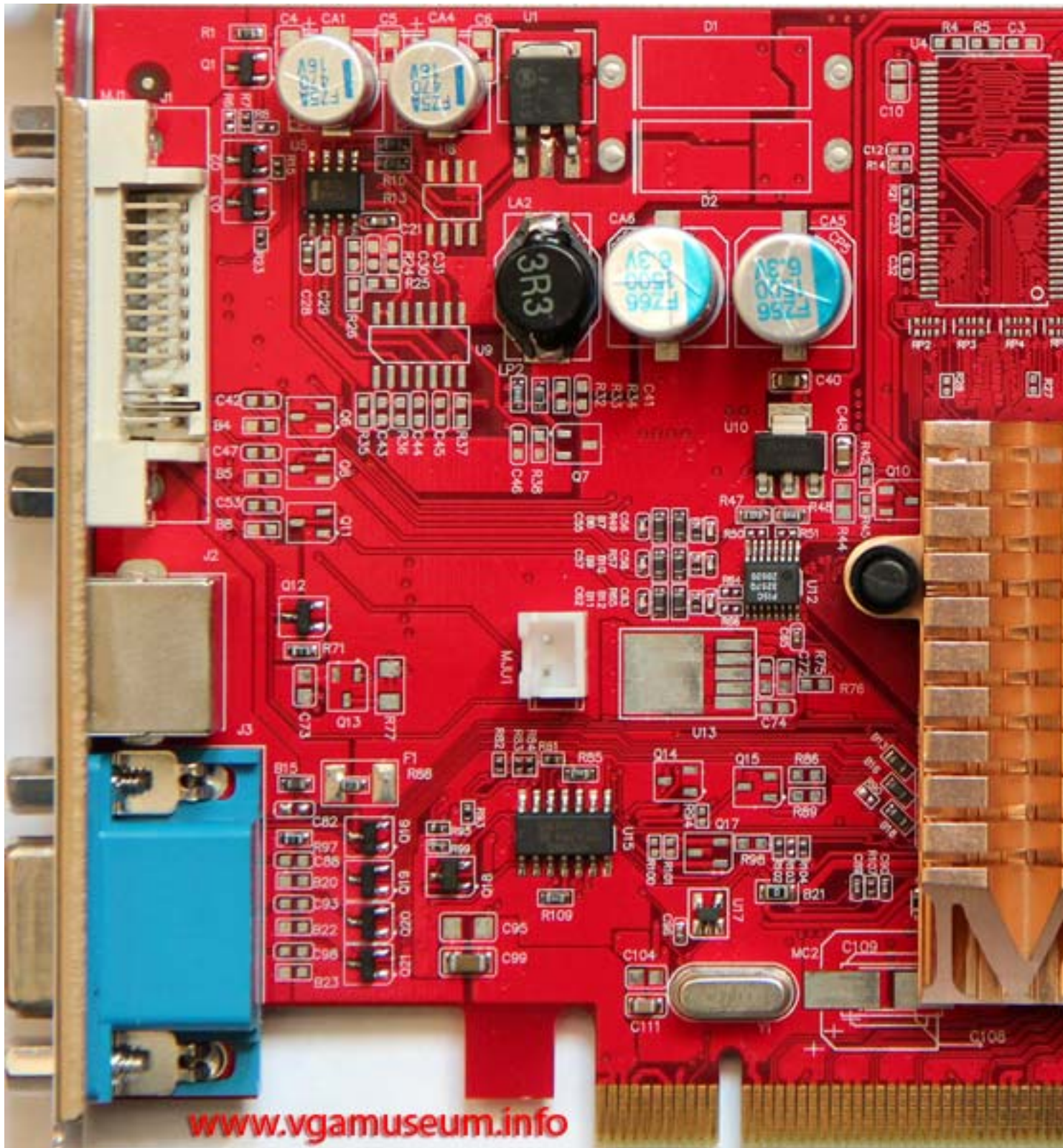
Bios: [MSI](#)

{webgallery}

ATI Radeon X300 SE

Written by Vlask

Saturday, 15 October 2011 15:50 - Last Updated Monday, 06 May 2013 22:47



ATI Radeon X300 SE

Written by Vlask

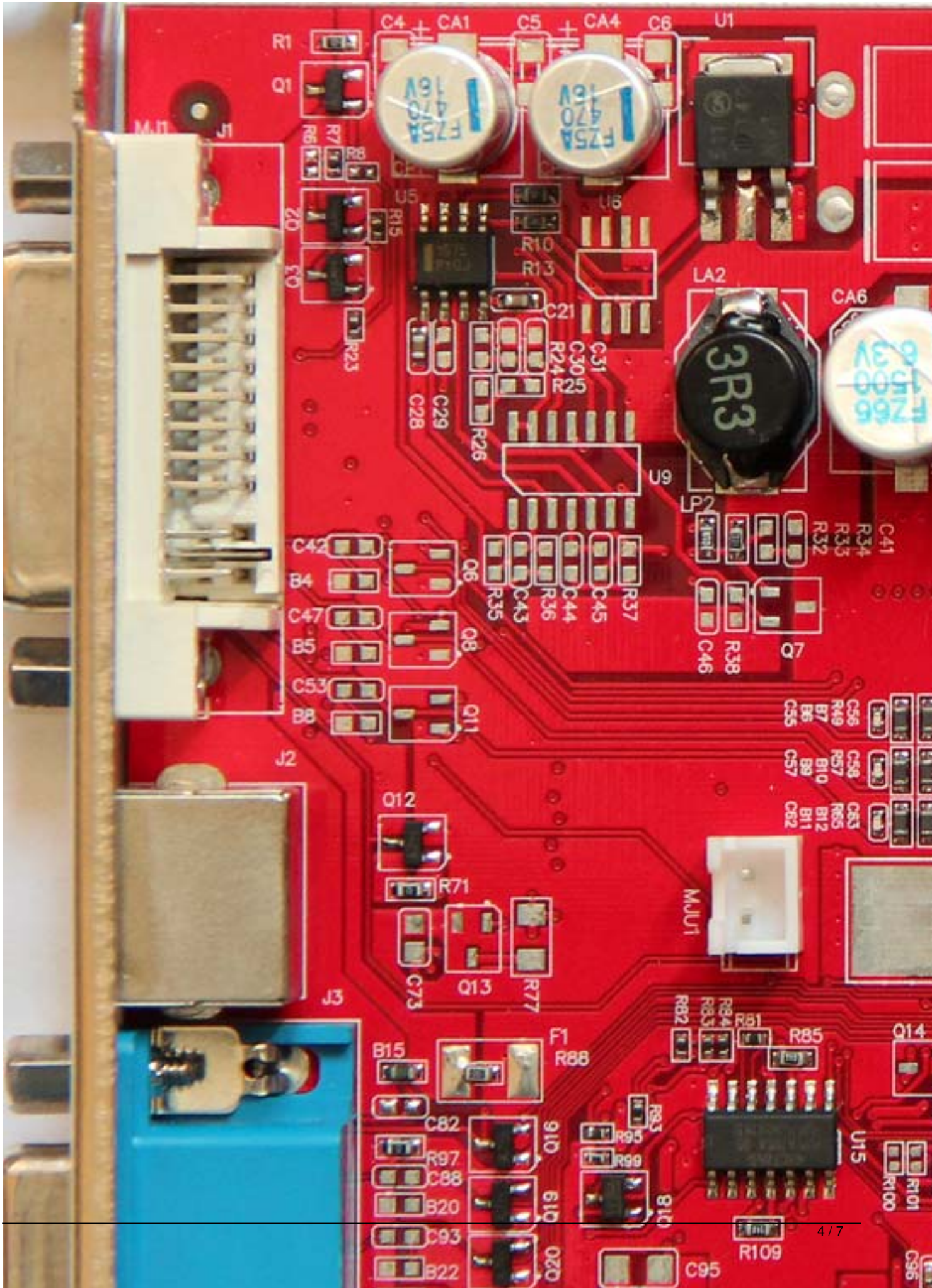
Saturday, 15 October 2011 15:50 - Last Updated Monday, 06 May 2013 22:47



ATI Radeon X300 SE

Written by Vlask

Saturday, 15 October 2011 15:50 - Last Updated Monday, 06 May 2013 22:47



ATI Radeon X300 SE

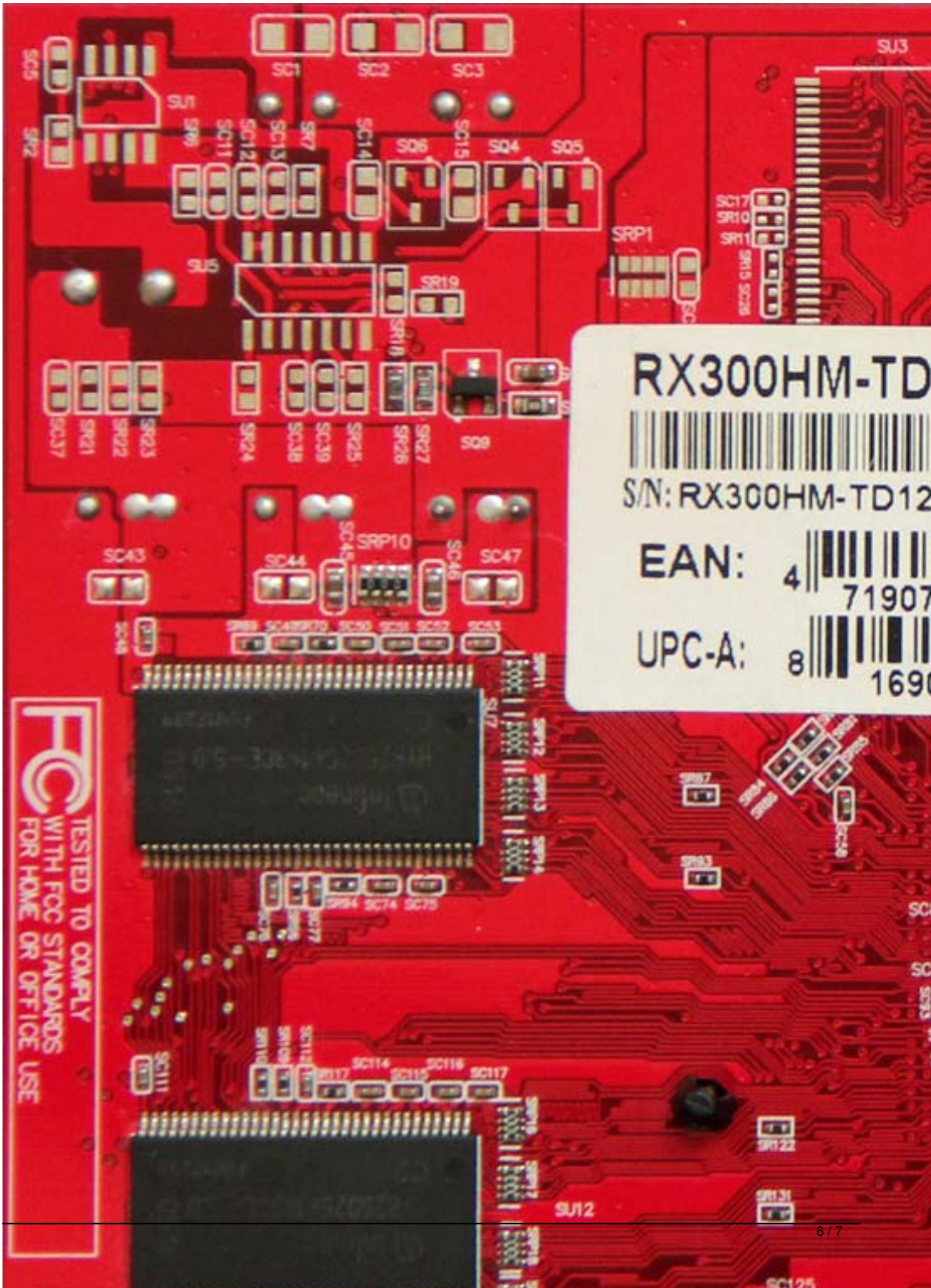
Written by Vlask

Saturday, 15 October 2011 15:50 - Last Updated Monday, 06 May 2013 22:47

ATI Radeon X300 SE

Written by Vlask

Saturday, 15 October 2011 15:50 - Last Updated Monday, 06 May 2013 22:47



RX300HM-TD
[Barcode]
S/N: RX300HM-TD12
EAN: 4 [Barcode] 71907
UPC-A: 8 [Barcode] 1690

FCC TESTED TO COMPLY WITH FCC STANDARDS FOR HOME OR OFFICE USE

ATI Radeon X300 SE

Written by Vlask

Saturday, 15 October 2011 15:50 - Last Updated Monday, 06 May 2013 22:47

The screenshot shows the TechPowerUp GPU-Z 0.5.5 application window. The main content area displays the following information:

Graphics Card			
Sensors			
Validation			
PowerColor Giveaway			
Name	ATI Radeon X300/X550/X1050 Series		
GPU	RV370	Revision	N/A
Technology	110 nm	Die Size	Unknown
Release Date	2004	Transistors	75M
BIOS Version	VER008.015.139.000		
Device ID	1002 - 5B60	Subvendor	MSI (1462)
ROPs	4	Bus Interface	PCI-E x16 @ x16
Shaders	4 Pixel / 2 Vertex	DirectX Support	9.0 / SM2.0
Pixel Fillrate	1.3 GPixel/s	Texture Fillrate	1.3 GTexel/s
Memory Type	DDR	Bus Width	64 Bit
Memory Size	128 MB	Bandwidth	3.1 GB/s
Driver Version	atumdag 8.593.100.0 (Catalyst 10.2) / Win7 64		
GPU Clock	324 MHz	Memory	196 MHz
Default Clock	324 MHz	Memory	196 MHz
ATI CrossFire	Disabled		
Computing	<input type="checkbox"/> OpenCL <input type="checkbox"/> CUDA <input type="checkbox"/> PhysX <input type="checkbox"/> DirectCompute		

At the bottom of the window, there is a dropdown menu showing "ATI Radeon X300/X550/X1050 Series" and a "Close" button.

{/webgallery}