

Cirrus Logic CL-GD5430 PCI

Written by Vlask

Wednesday, 30 September 2009 22:54 - Last Updated Sunday, 13 June 2010 16:12



Core: CL-GD5430 78MHz 32bit

Memory: 1MB (2MB max) FPM 60MHz 32bit

Year: 1994 **Bus:** PCI

Made: Korea **Links:** [Pdf](#)

Bios: [Cirrus](#)

{webgallery}

Cirrus Logic CL-GD5430 PCI

Written by Vlask

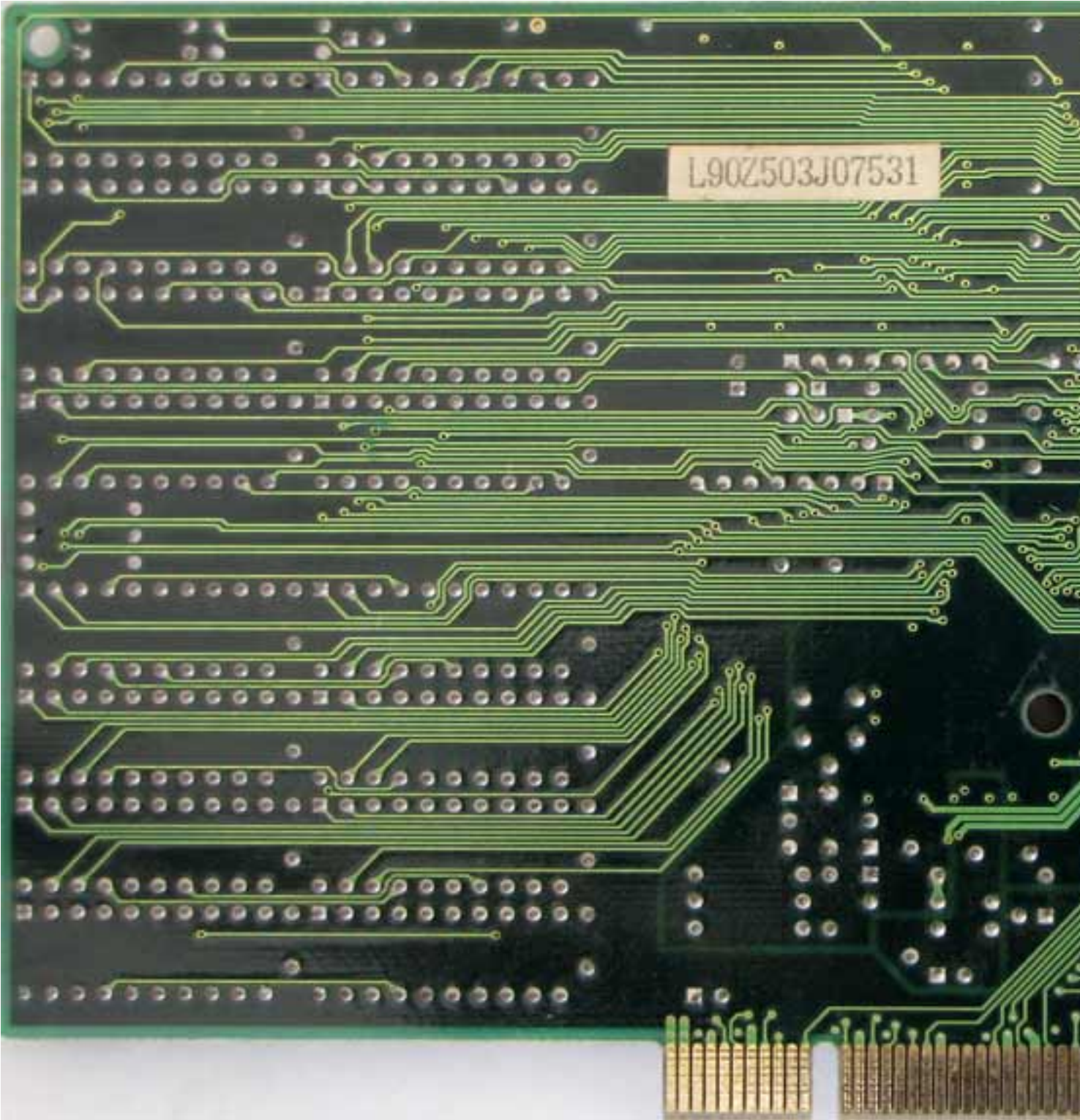
Wednesday, 30 September 2009 22:54 - Last Updated Sunday, 13 June 2010 16:12



Cirrus Logic CL-GD5430 PCI

Written by Vlask

Wednesday, 30 September 2009 22:54 - Last Updated Sunday, 13 June 2010 16:12



Cirrus Logic CL-GD5430 PCI

Written by Vlask

Wednesday, 30 September 2009 22:54 - Last Updated Sunday, 13 June 2010 16:12



Cirrus Logic CL-GD5430 PCI

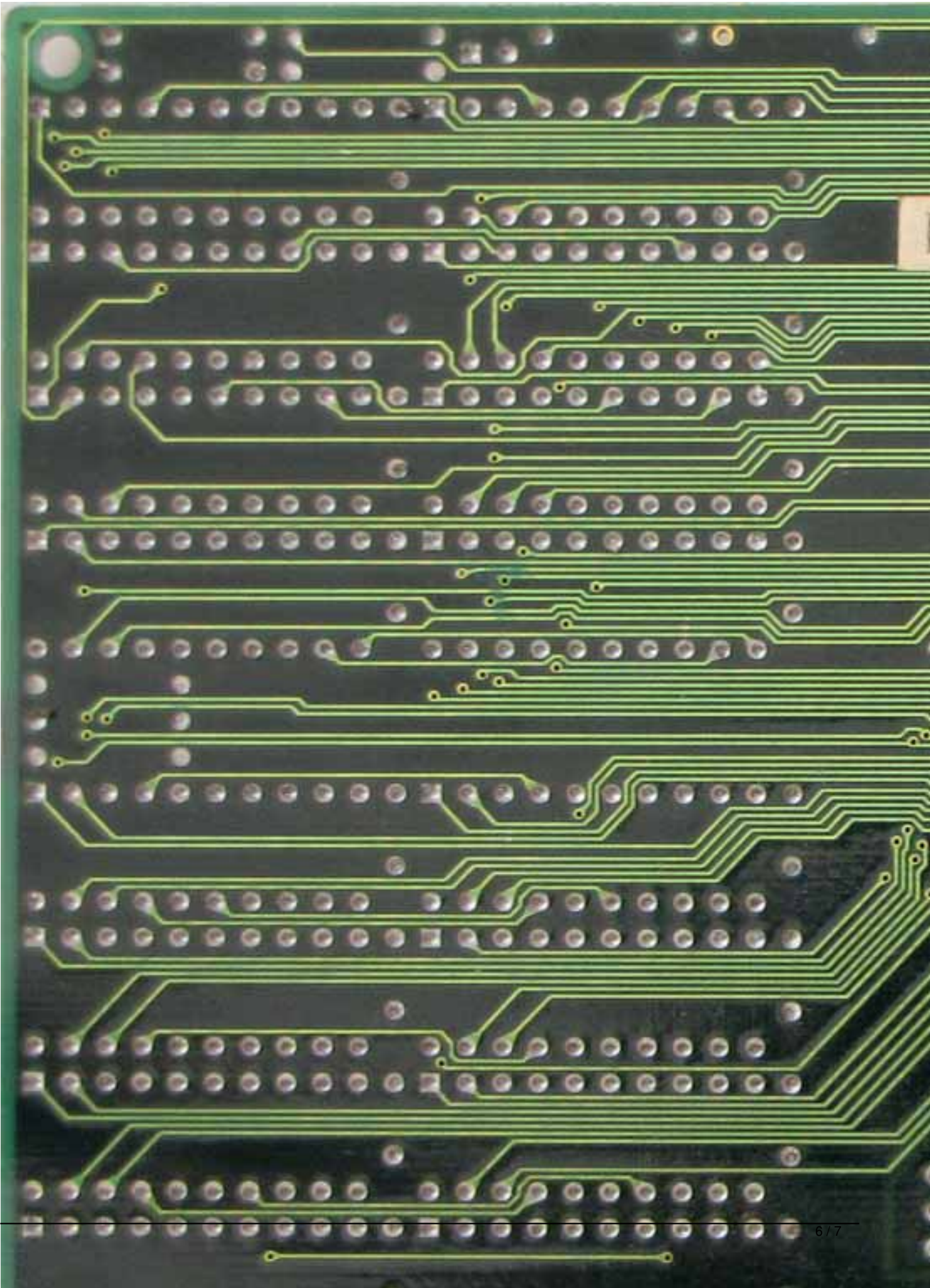
Written by Vlask

Wednesday, 30 September 2009 22:54 - Last Updated Sunday, 13 June 2010 16:12

Cirrus Logic CL-GD5430 PCI

Written by Vlask

Wednesday, 30 September 2009 22:54 - Last Updated Sunday, 13 June 2010 16:12



Cirrus Logic CL-GD5430 PCI

Written by Vlask

Wednesday, 30 September 2009 22:54 - Last Updated Sunday, 13 June 2010 16:12

{/webgallery}