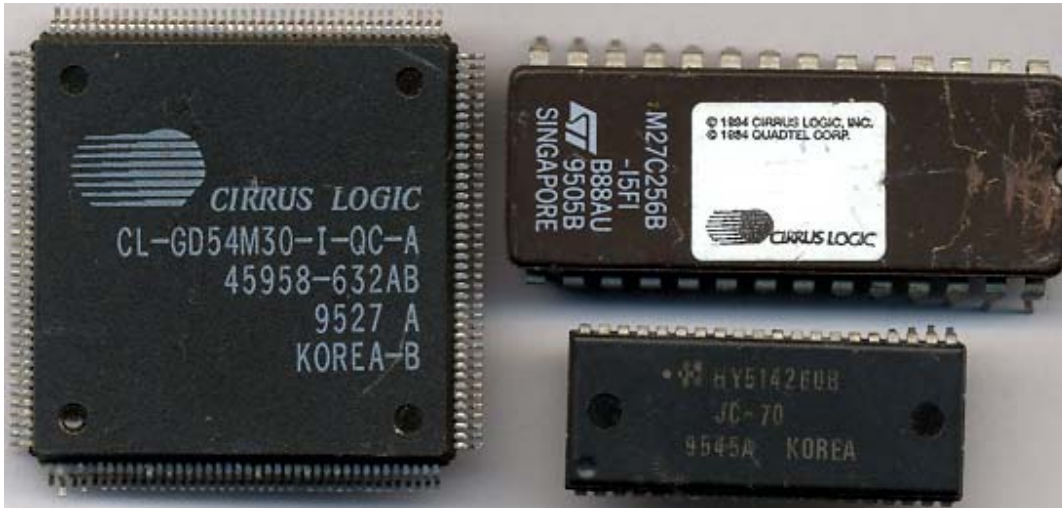


Cirrus Logic CL-GD54M30

Written by Vlask

Thursday, 01 October 2009 20:52 - Last Updated Thursday, 01 October 2009 21:08



Core: CL-GD54M30 50,11MHz 32bit

Memory: 1MB (2MB max) DRAM ?MHz 32bit

Year: 1995 **Bus:** PCI

Made: Korea/USA/Japan **Links:** [web archive](#)

Bios: [Cirrus](#)

{webgallery}

Cirrus Logic CL-GD54M30

Written by Vlask

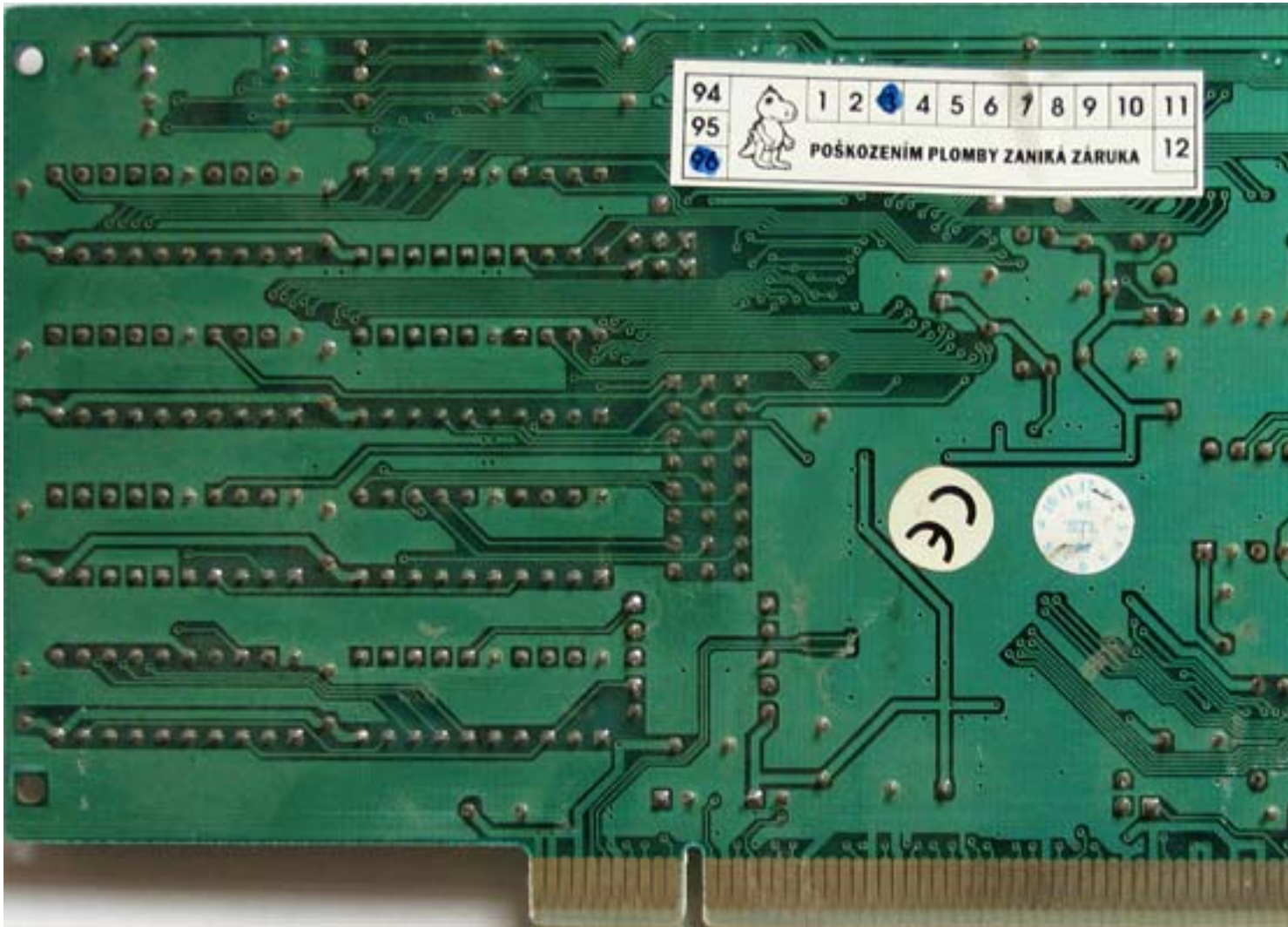
Thursday, 01 October 2009 20:52 - Last Updated Thursday, 01 October 2009 21:08



Cirrus Logic CL-GD54M30

Written by Vlask

Thursday, 01 October 2009 20:52 - Last Updated Thursday, 01 October 2009 21:08



Cirrus Logic CL-GD54M30

Written by Vlask

Thursday, 01 October 2009 20:52 - Last Updated Thursday, 01 October 2009 21:08



Cirrus Logic CL-GD54M30

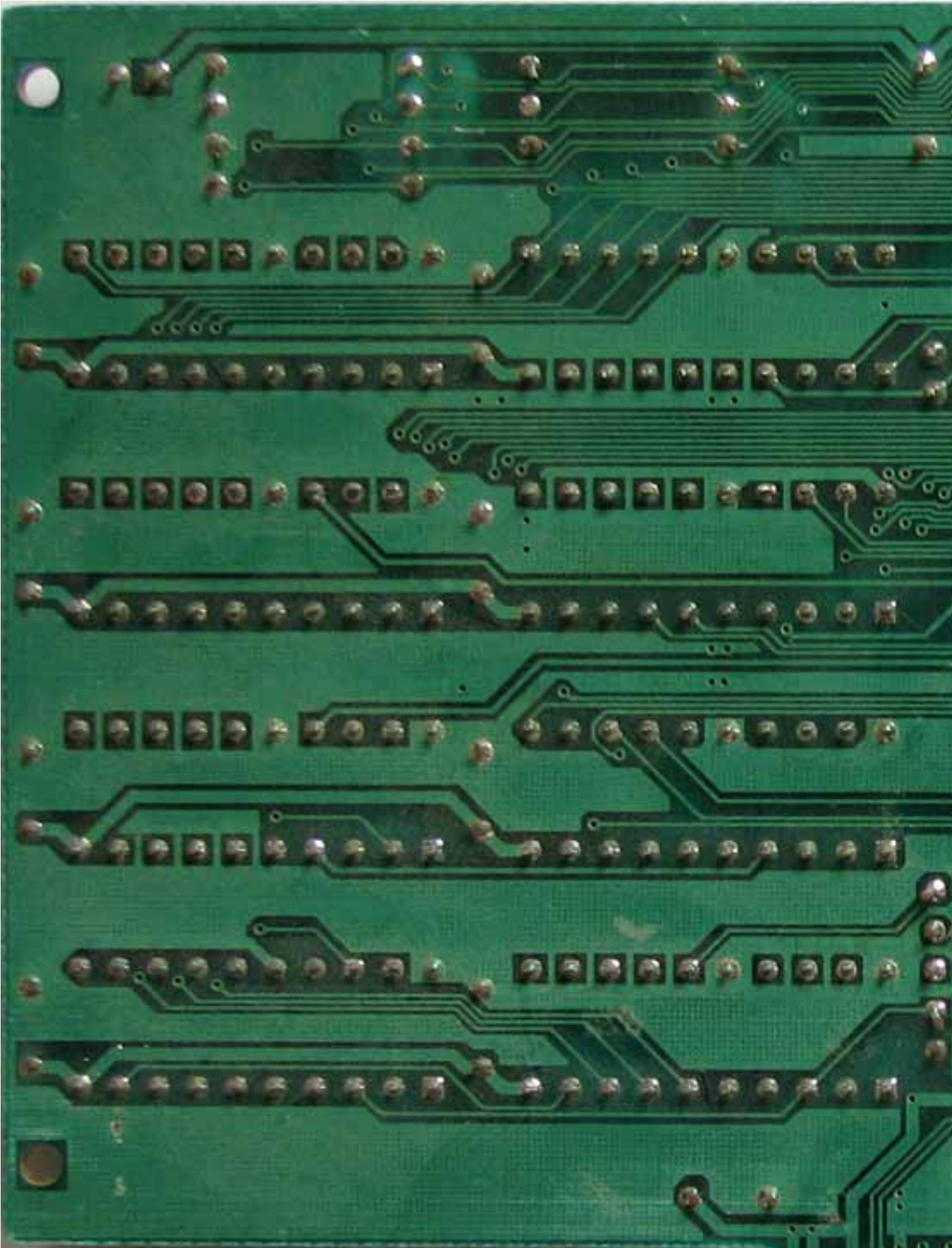
Written by Vlask

Thursday, 01 October 2009 20:52 - Last Updated Thursday, 01 October 2009 21:08

Cirrus Logic CL-GD54M30

Written by Vlask

Thursday, 01 October 2009 20:52 - Last Updated Thursday, 01 October 2009 21:08



Cirrus Logic CL-GD54M30

Written by Vlask

Thursday, 01 October 2009 20:52 - Last Updated Thursday, 01 October 2009 21:08



Cirrus Logic CL-GD54M30

Written by Vlask

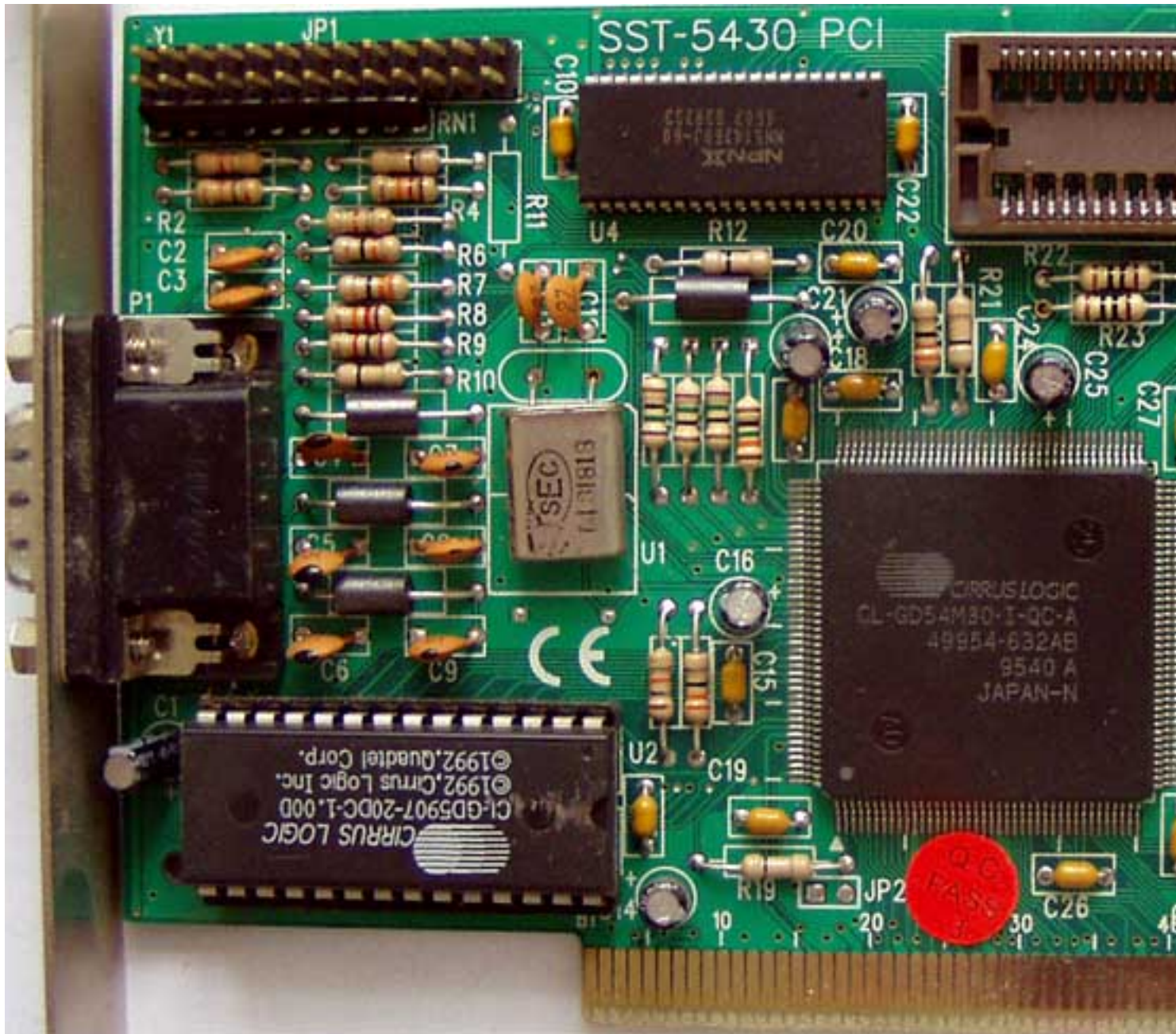
Thursday, 01 October 2009 20:52 - Last Updated Thursday, 01 October 2009 21:08



Cirrus Logic CL-GD54M30

Written by Vlask

Thursday, 01 October 2009 20:52 - Last Updated Thursday, 01 October 2009 21:08



Cirrus Logic CL-GD54M30

Written by Vlask

Thursday, 01 October 2009 20:52 - Last Updated Thursday, 01 October 2009 21:08



{/webgallery}