

Cirrus Logic CL-GD5434

Written by Vlask

Thursday, 01 October 2009 22:06 - Last Updated Sunday, 13 June 2010 16:13



Core: CL-GD5434 108MHz 64bit

Memory: 1MB (4MB max) FPM 50MHz 64bit

Year: 1995 **Bus:** PCI

Made: Korea/Taiwan/Japan **Links:** [web archive](#) [pdf](#)

Bios: [Cirrus](#)

{webgallery}

Cirrus Logic CL-GD5434

Written by Vlask

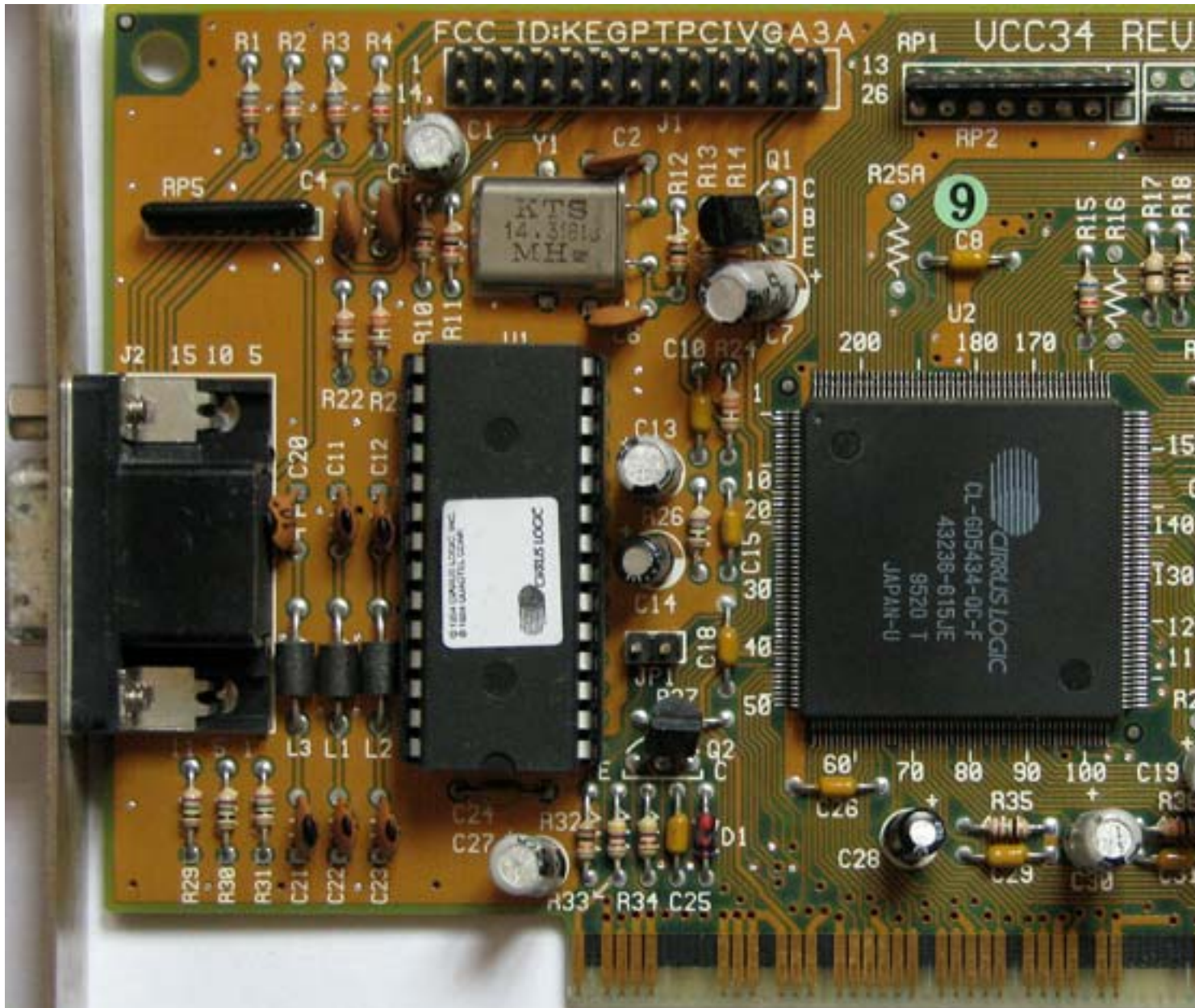
Thursday, 01 October 2009 22:06 - Last Updated Sunday, 13 June 2010 16:13



Cirrus Logic CL-GD5434

Written by Vlask

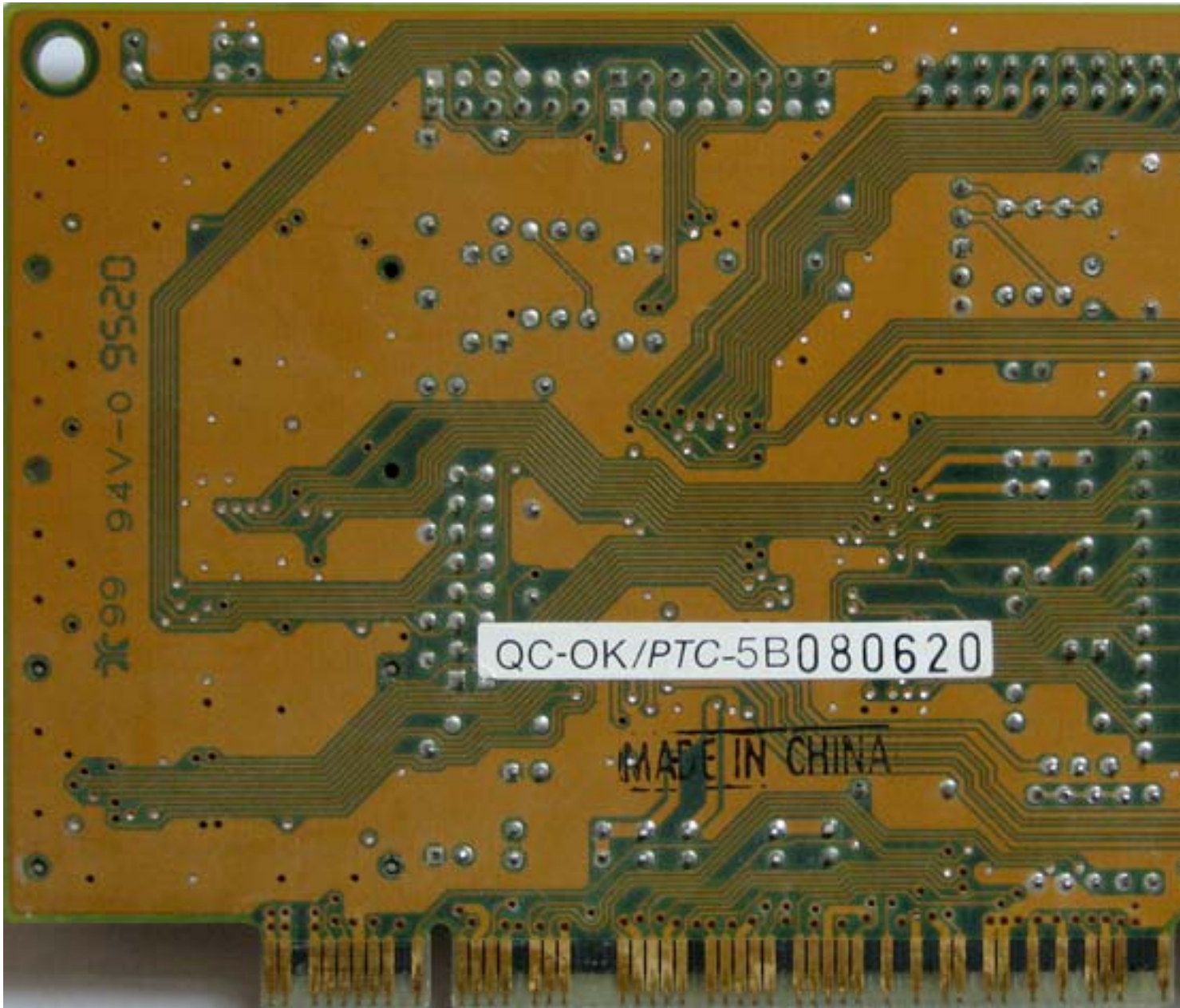
Thursday, 01 October 2009 22:06 - Last Updated Sunday, 13 June 2010 16:13



Cirrus Logic CL-GD5434

Written by Vlask

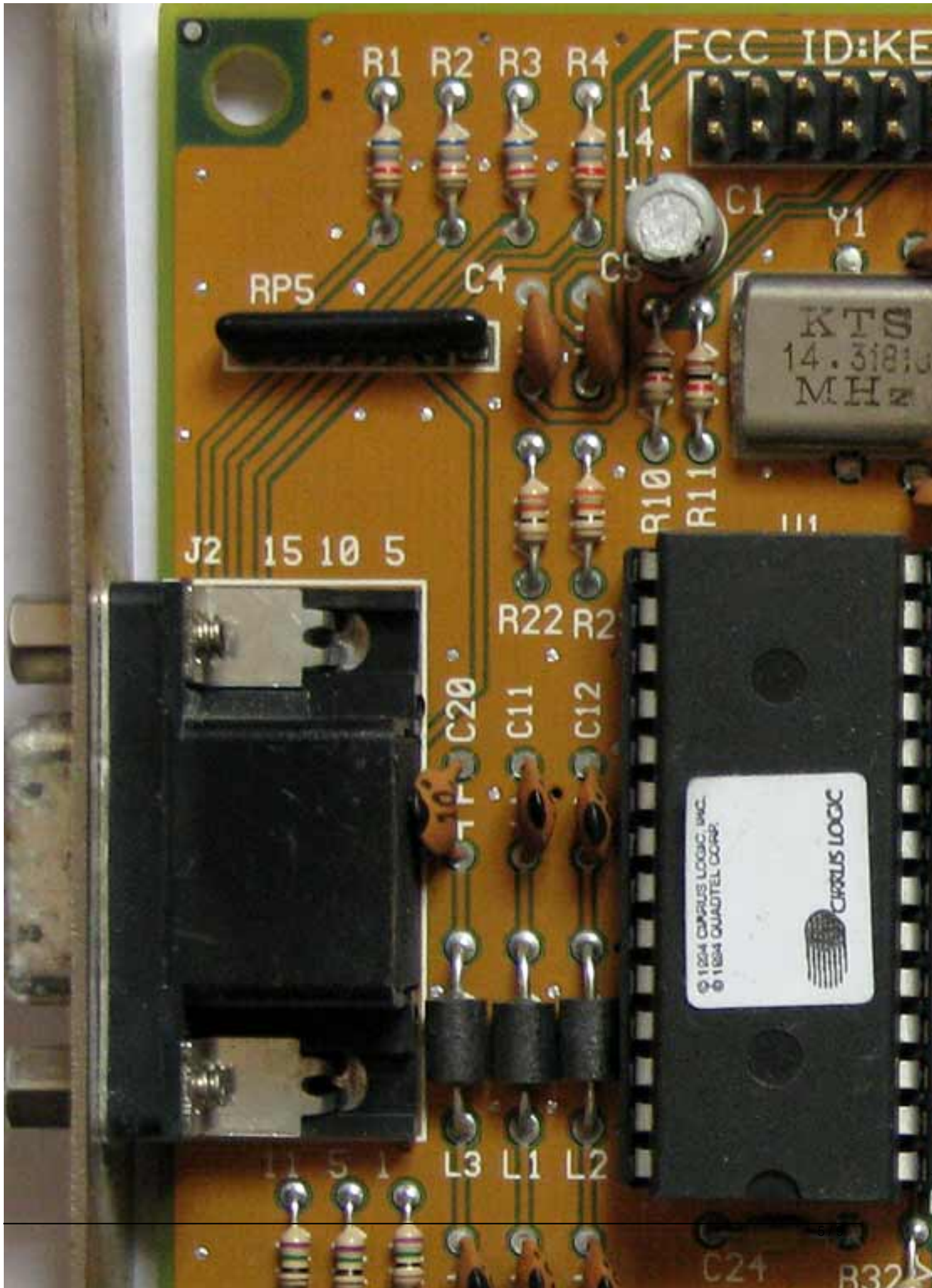
Thursday, 01 October 2009 22:06 - Last Updated Sunday, 13 June 2010 16:13



Cirrus Logic CL-GD5434

Written by Vlask

Thursday, 01 October 2009 22:06 - Last Updated Sunday, 13 June 2010 16:13



Cirrus Logic CL-GD5434

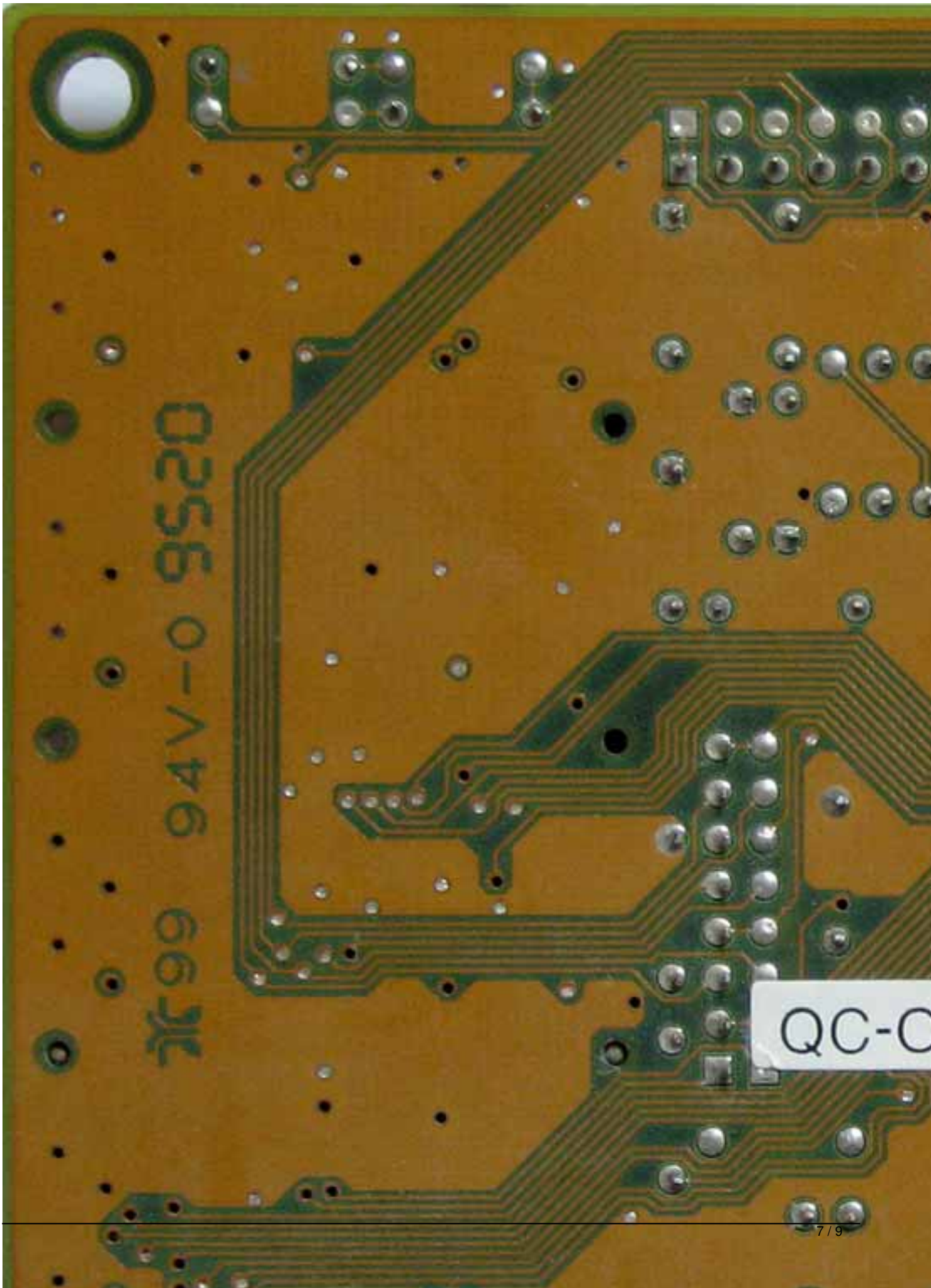
Written by Vlask

Thursday, 01 October 2009 22:06 - Last Updated Sunday, 13 June 2010 16:13

Cirrus Logic CL-GD5434

Written by Vlask

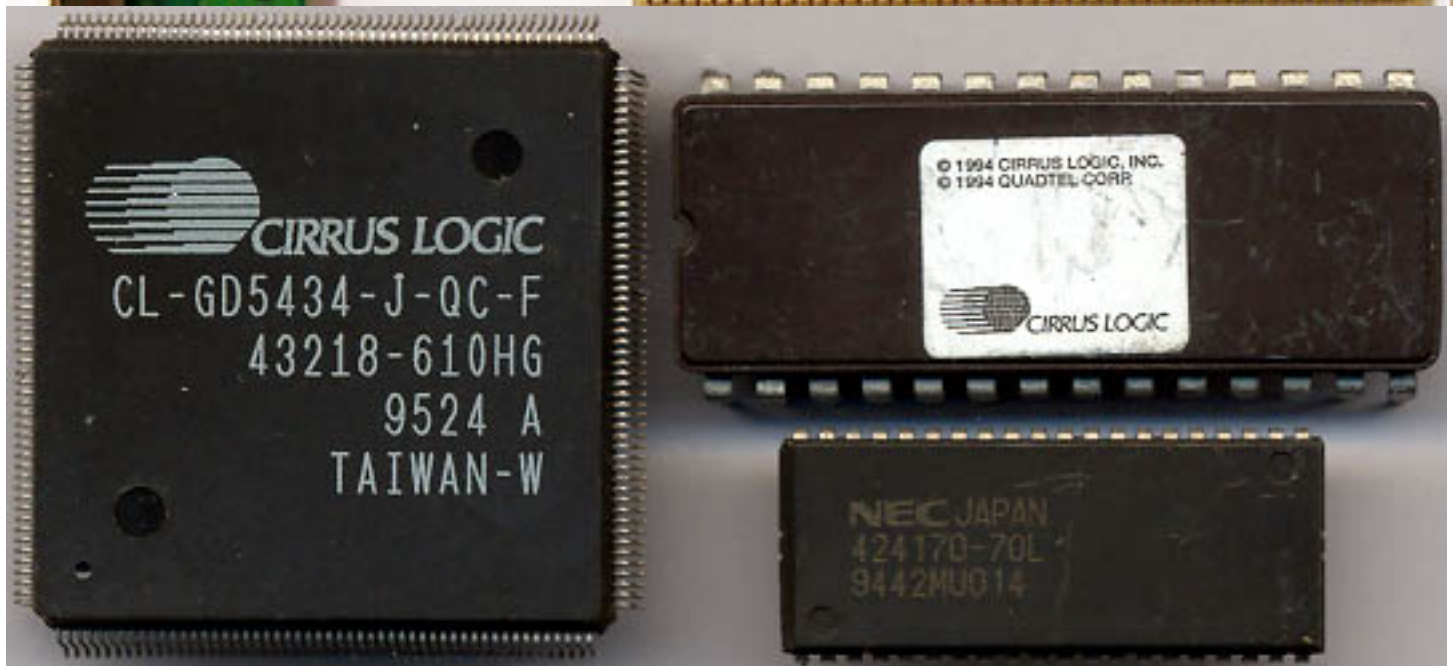
Thursday, 01 October 2009 22:06 - Last Updated Sunday, 13 June 2010 16:13



Cirrus Logic CL-GD5434

Written by Vlask

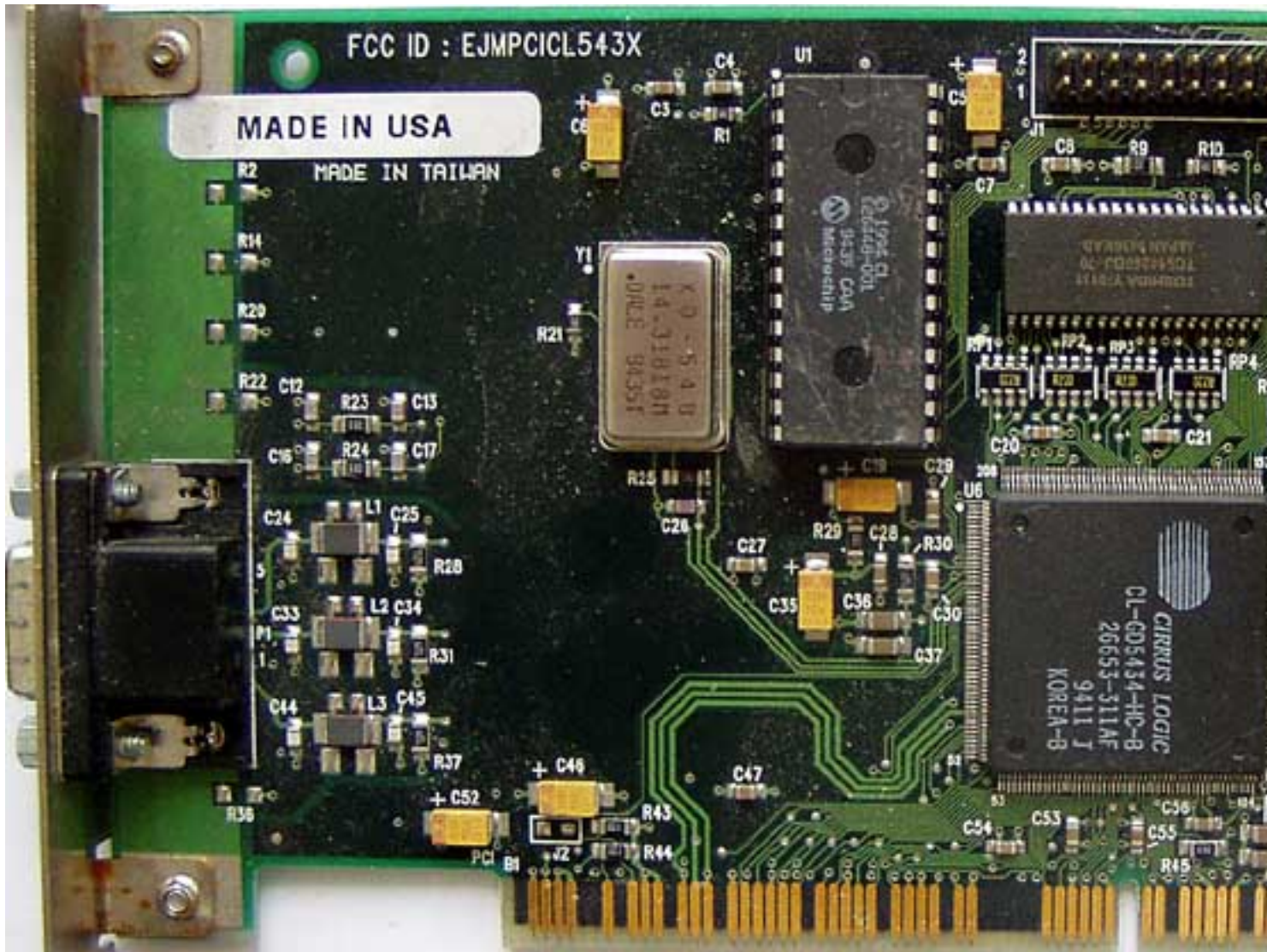
Thursday, 01 October 2009 22:06 - Last Updated Sunday, 13 June 2010 16:13



Cirrus Logic CL-GD5434

Written by Vlask

Thursday, 01 October 2009 22:06 - Last Updated Sunday, 13 June 2010 16:13



{/webgallery}