

Cirrus Logic CL-GD5465 Laguna3D

Written by Vlask

Friday, 02 October 2009 22:20 - Last Updated Sunday, 23 February 2014 00:29



Core: CL-GD5465 85MHz 64bit

Memory: 4MB (8MB max) RDRAM ?MHz 64bit

Year: 1997 **Bus:** AGP 1x

Made: Japan **Links:** [Pdf](#) [web archive](#) [Press](#) [Datasheet](#)

Bios: [cirrus](#)

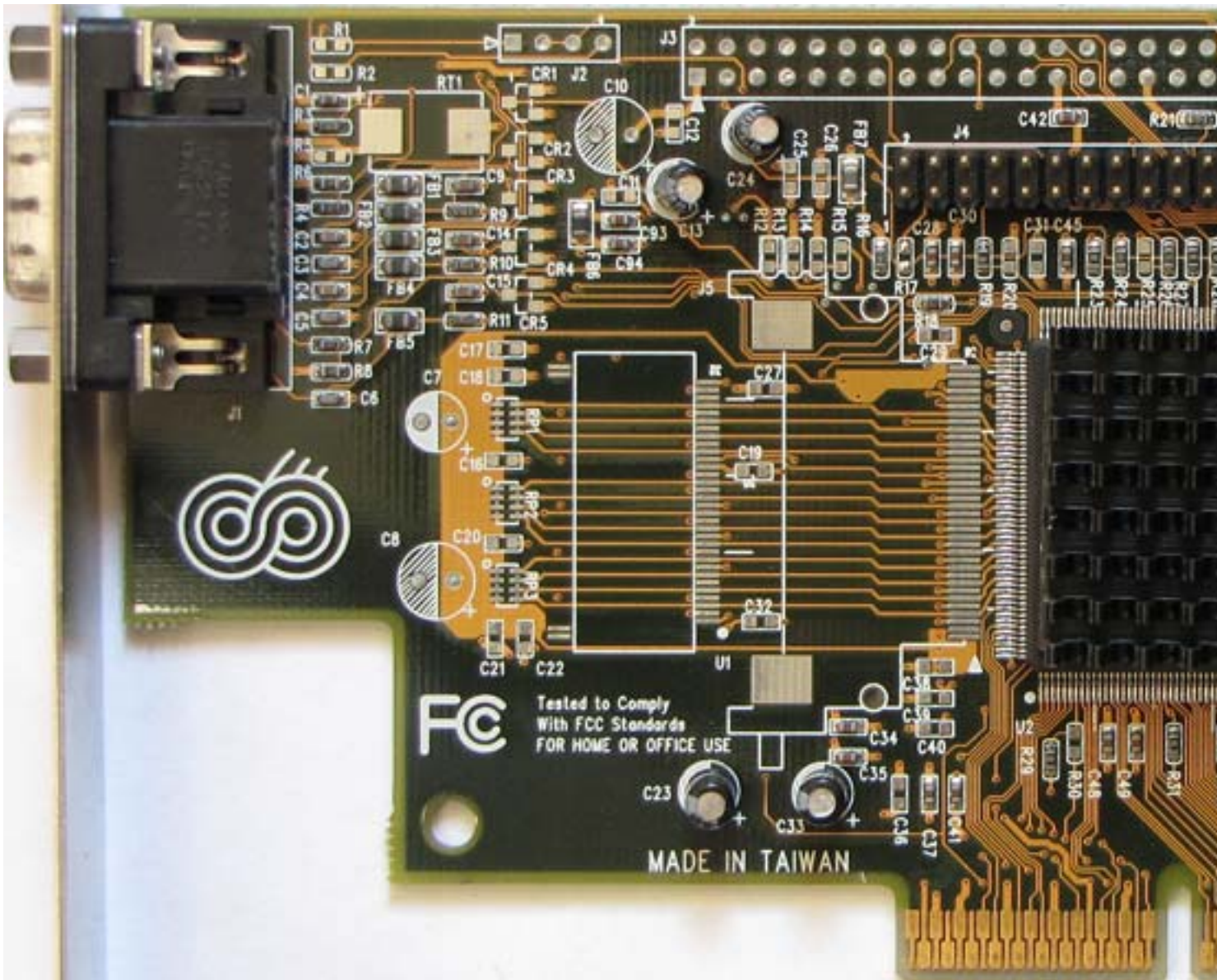
Note: Integrated version is from desktop IBM 300GL (Celeron 300MHz)

{webgallery}

Cirrus Logic CL-GD5465 Laguna3D

Written by Vlask

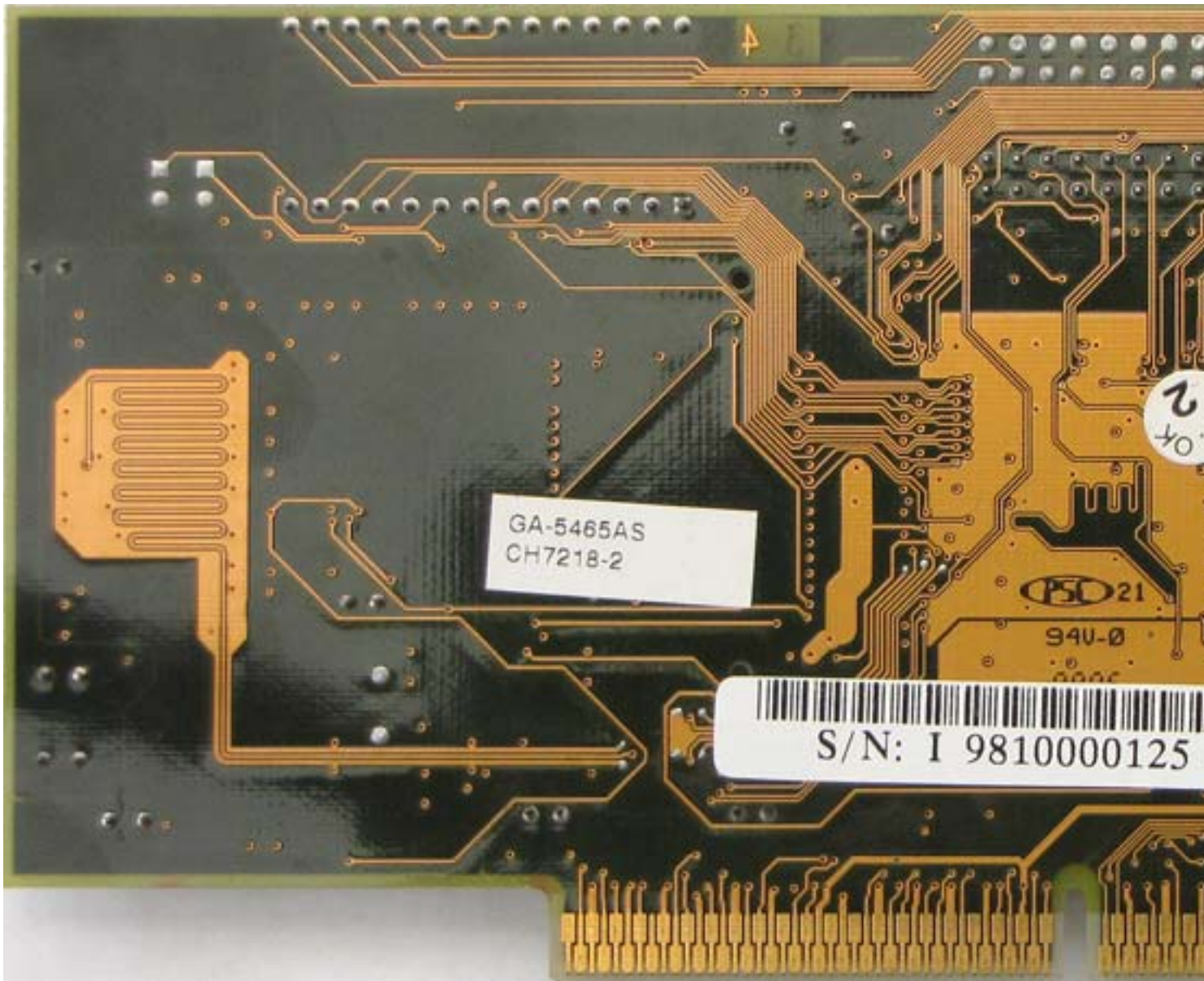
Friday, 02 October 2009 22:20 - Last Updated Sunday, 23 February 2014 00:29



Cirrus Logic CL-GD5465 Laguna3D

Written by Vlask

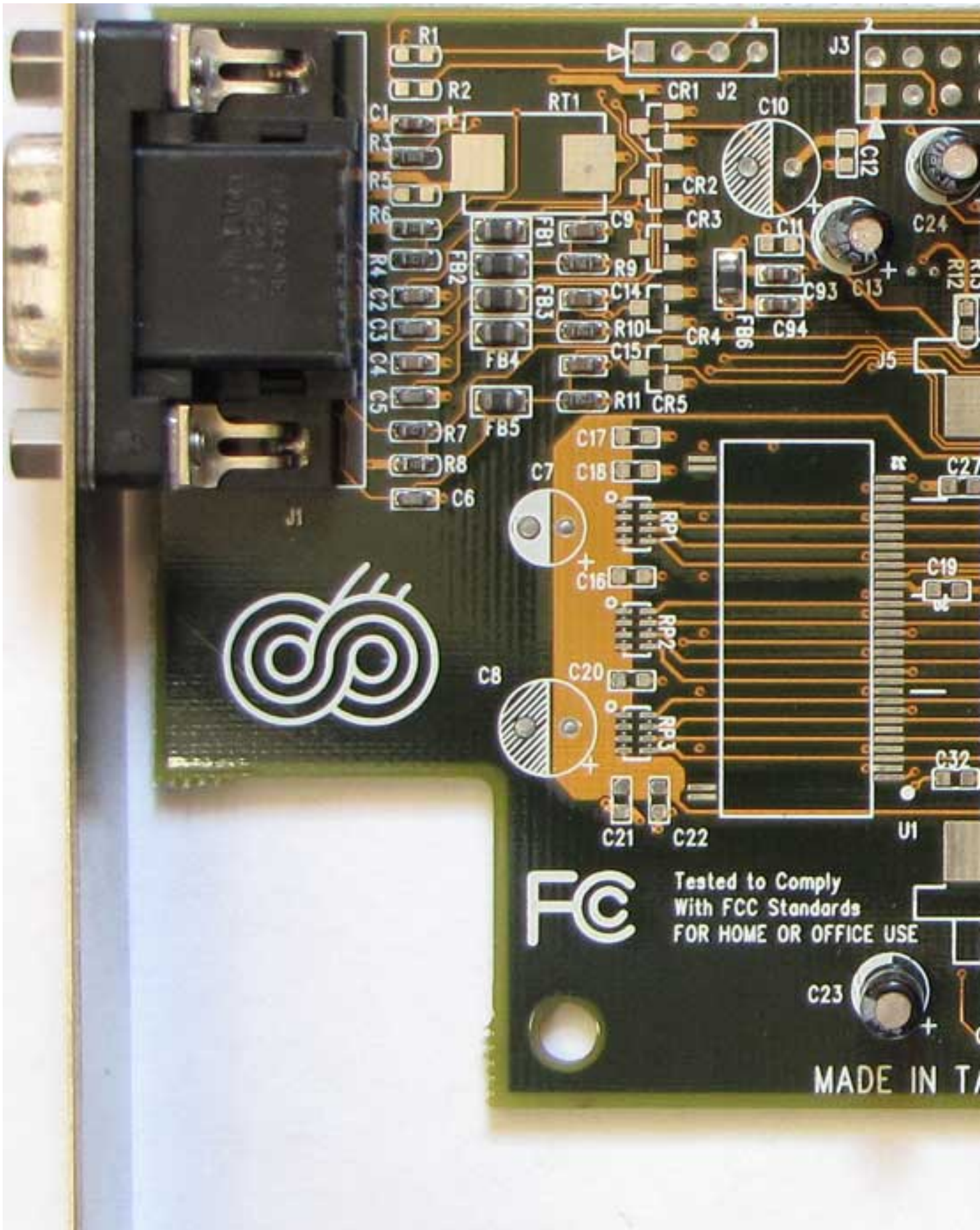
Friday, 02 October 2009 22:20 - Last Updated Sunday, 23 February 2014 00:29



Cirrus Logic CL-GD5465 Laguna3D

Written by Vlask

Friday, 02 October 2009 22:20 - Last Updated Sunday, 23 February 2014 00:29



Cirrus Logic CL-GD5465 Laguna3D

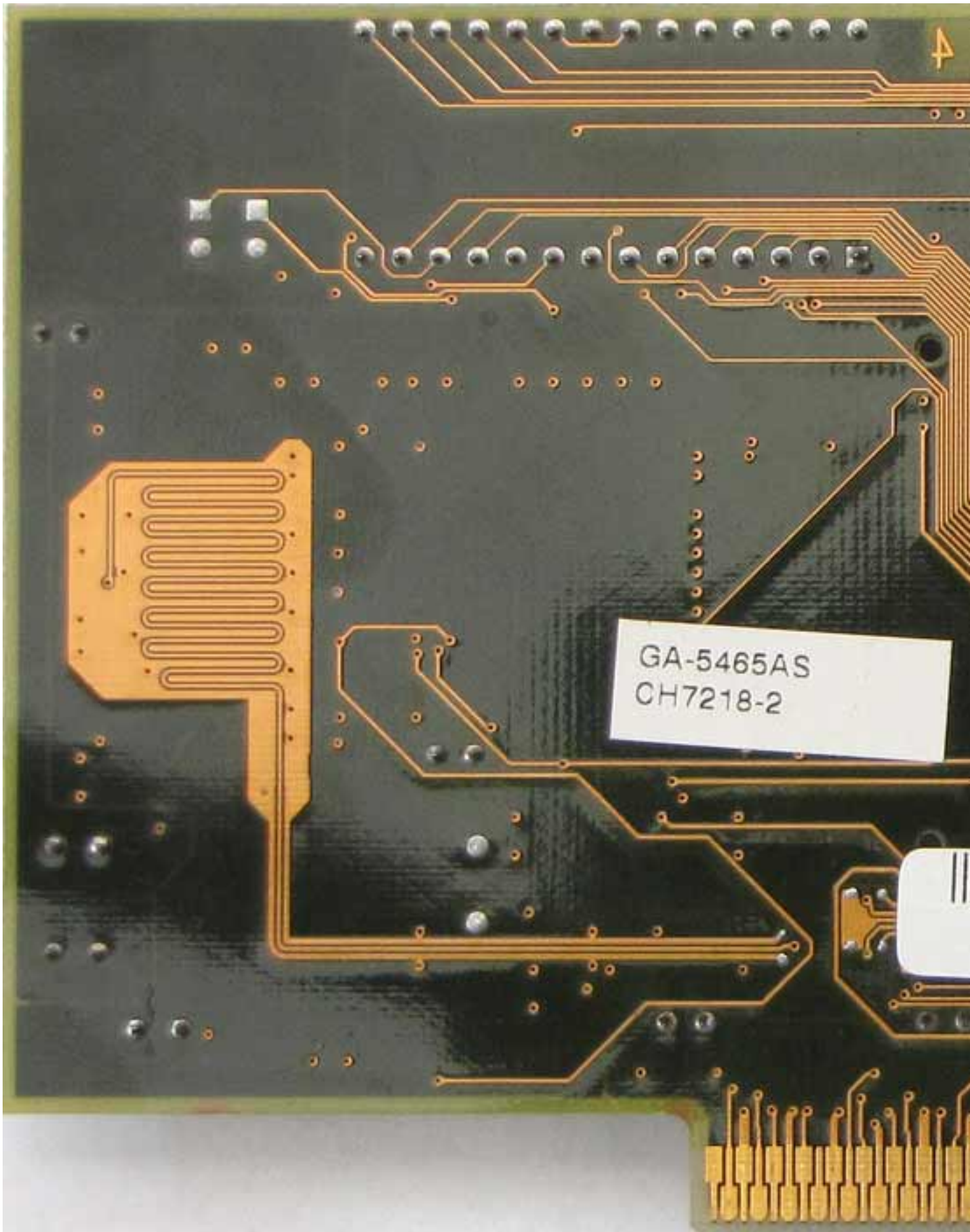
Written by Vlask

Friday, 02 October 2009 22:20 - Last Updated Sunday, 23 February 2014 00:29

Cirrus Logic CL-GD5465 Laguna3D

Written by Vlask

Friday, 02 October 2009 22:20 - Last Updated Sunday, 23 February 2014 00:29



Cirrus Logic CL-GD5465 Laguna3D

Written by Vlask

Friday, 02 October 2009 22:20 - Last Updated Sunday, 23 February 2014 00:29



{/webgallery}