

## Cirrus Logic CL-GD5436

Written by Vlask

Saturday, 06 March 2010 12:09 - Last Updated Tuesday, 26 June 2012 11:36

---



**Core:** CL-GD5436 ?MHz 64bit

**Memory:** 1MB FPM (EDO) 50,11 (80 max) MHz 64bit

**Year:** 1995 **Bus:** integrated, PCI

**Made:** Japan, Korea **Links:** [Pdf](#) [Press](#)

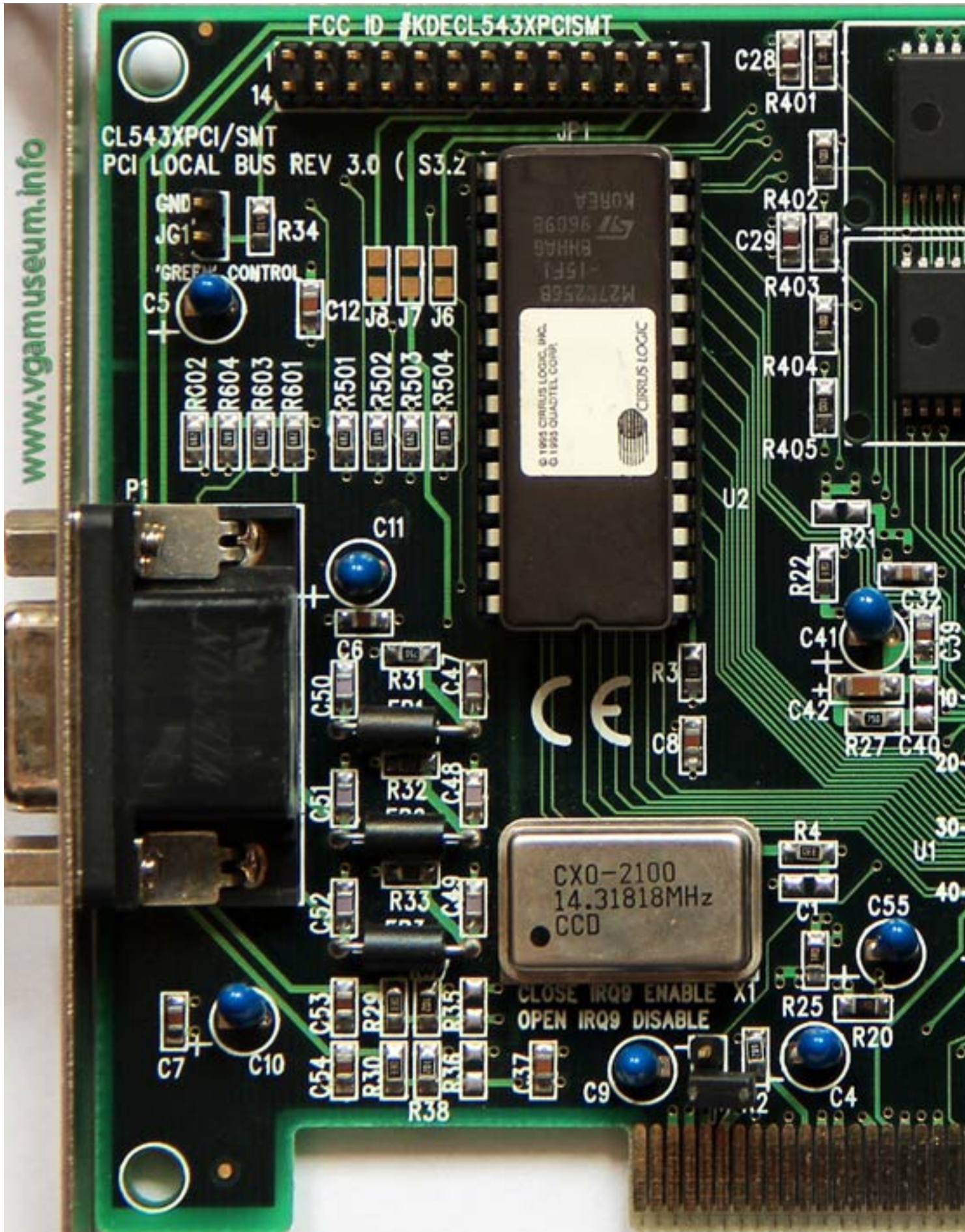
**Bios:** [Cirrus](#)

{webgallery}

# Cirrus Logic CL-GD5436

Written by Vlask

Saturday, 06 March 2010 12:09 - Last Updated Tuesday, 26 June 2012 11:36



# Cirrus Logic CL-GD5436

Written by Vlask

Saturday, 06 March 2010 12:09 - Last Updated Tuesday, 26 June 2012 11:36

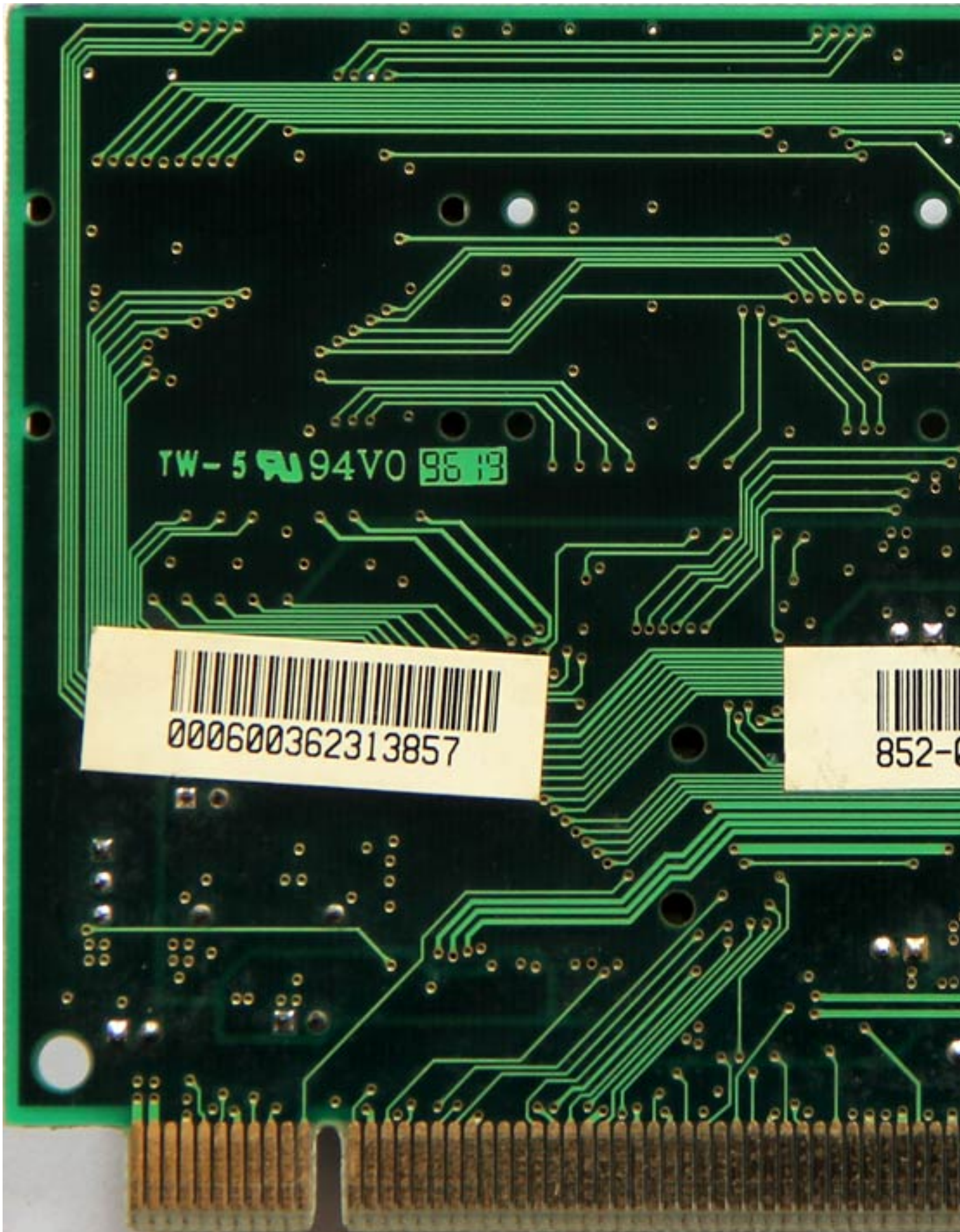
---

# Cirrus Logic CL-GD5436

Written by Vlask

Saturday, 06 March 2010 12:09 - Last Updated Tuesday, 26 June 2012 11:36

---



# Cirrus Logic CL-GD5436

Written by Vlask

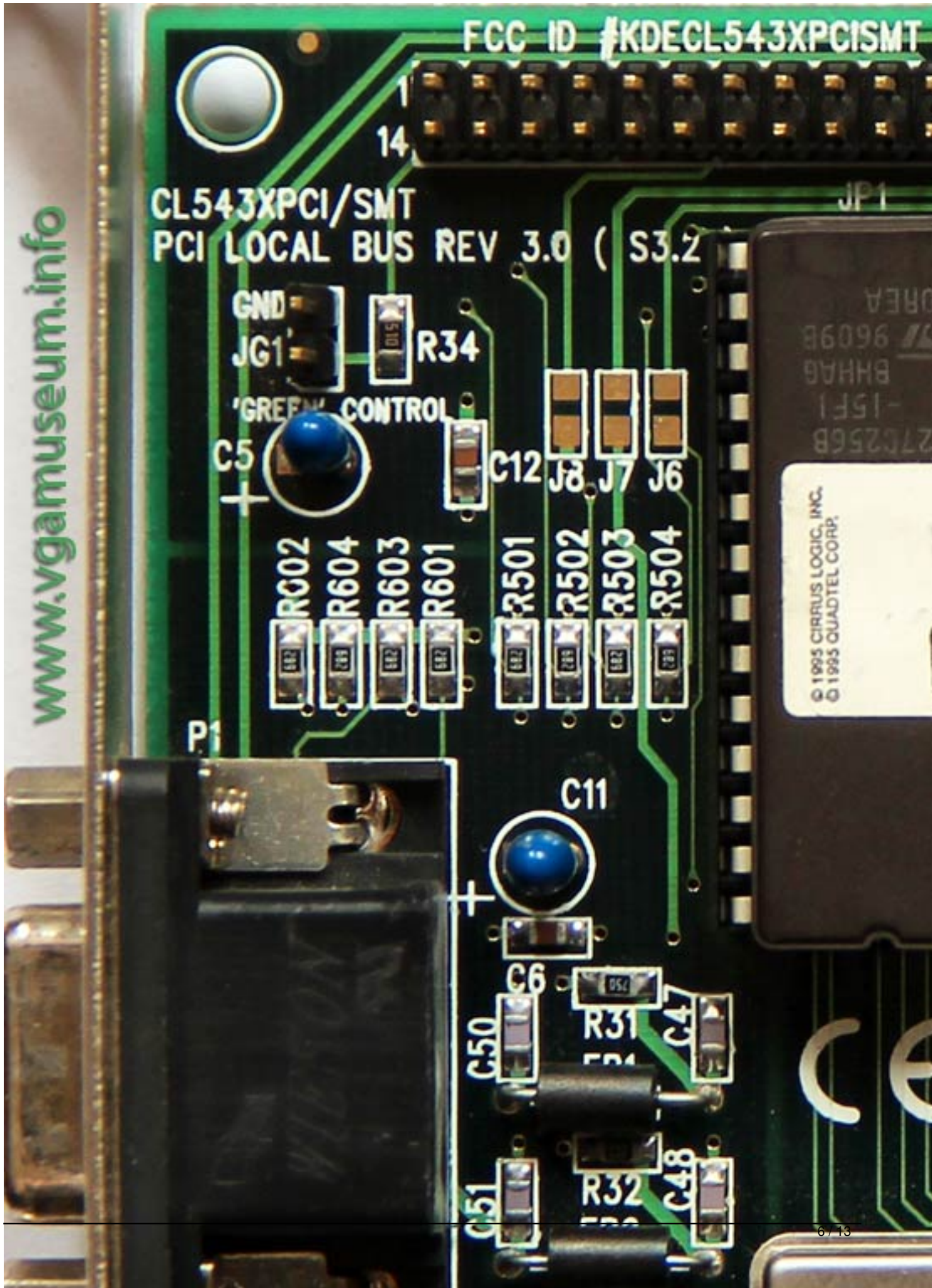
Saturday, 06 March 2010 12:09 - Last Updated Tuesday, 26 June 2012 11:36

---

Cirrus Logic CL-GD5436

Written by Vlask

Saturday, 06 March 2010 12:09 - Last Updated Tuesday, 26 June 2012 11:36



# Cirrus Logic CL-GD5436

Written by Vlask

Saturday, 06 March 2010 12:09 - Last Updated Tuesday, 26 June 2012 11:36

---



TW-5  94V0 96 13



000600362313857



## Cirrus Logic CL-GD5436

Written by Vlask

Saturday, 06 March 2010 12:09 - Last Updated Tuesday, 26 June 2012 11:36

---

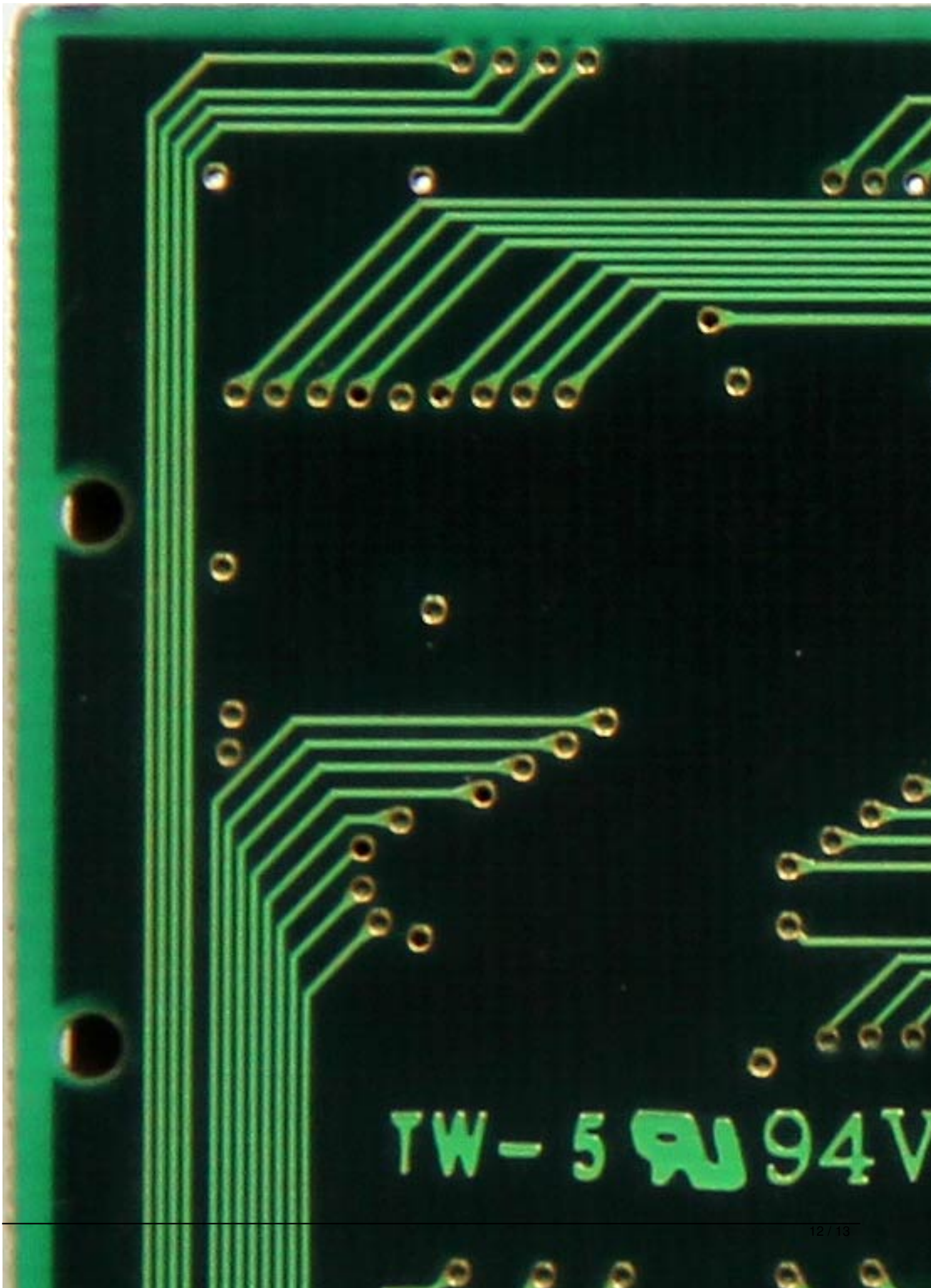


# Cirrus Logic CL-GD5436

Written by Vlask

Saturday, 06 March 2010 12:09 - Last Updated Tuesday, 26 June 2012 11:36

---



## Cirrus Logic CL-GD5436

Written by Vlask

Saturday, 06 March 2010 12:09 - Last Updated Tuesday, 26 June 2012 11:36

---

{/webgallery}