

Cirrus Logic CL-GD5426

Written by Vlask

Monday, 28 September 2009 12:23 - Last Updated Thursday, 04 August 2011 10:05



Core: CL-GD5426 80MHz 32bit

Memory: 1MB (2MB max) FPM 50MHz 32bit

Year: 1993 **Bus:** VL-Bus / ISA

Made: Korea **Links:** [Pdf](#)

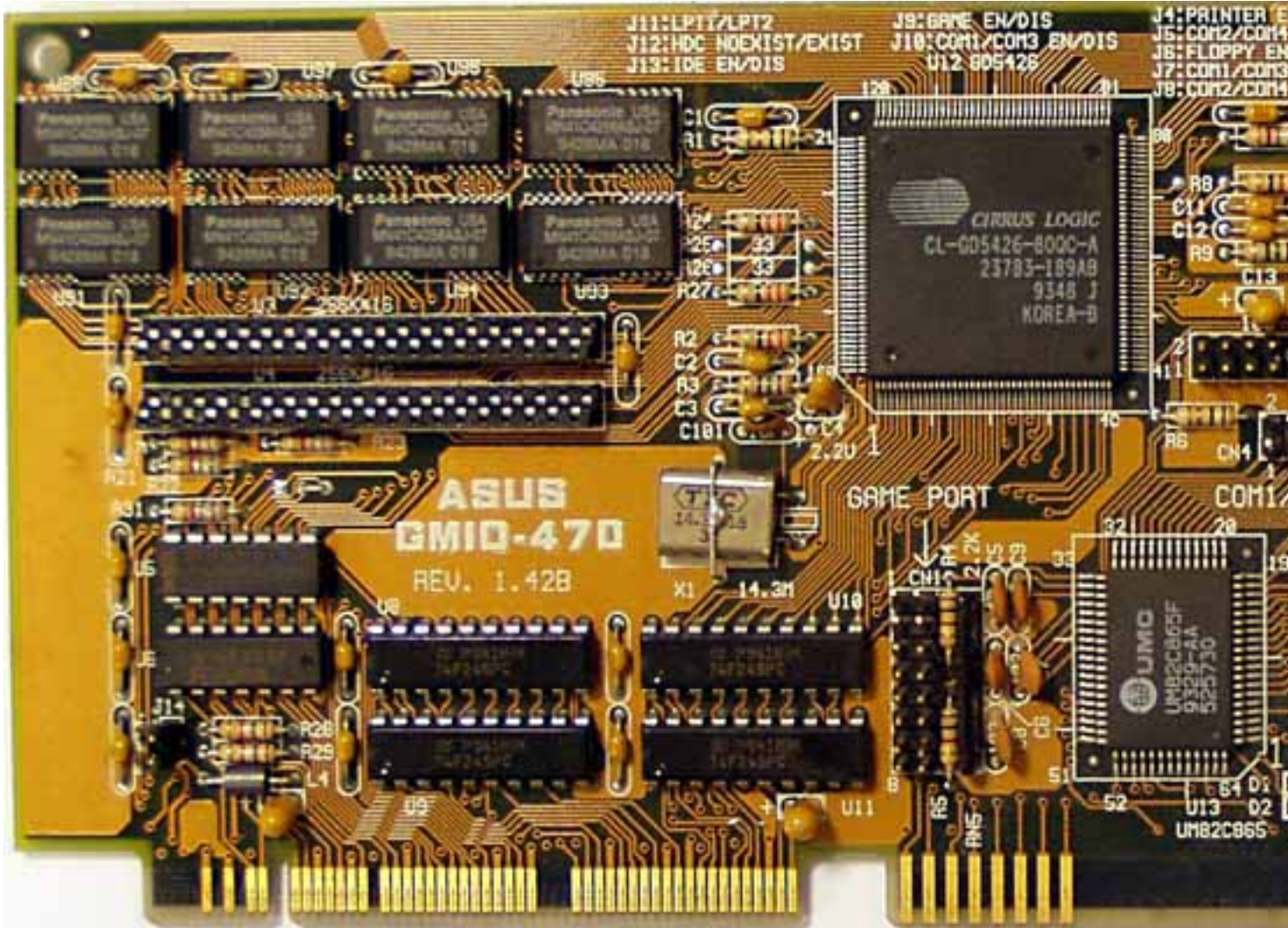
Bios: [Diamond](#)

{webgallery}

Cirrus Logic CL-GD5426

Written by Vlask

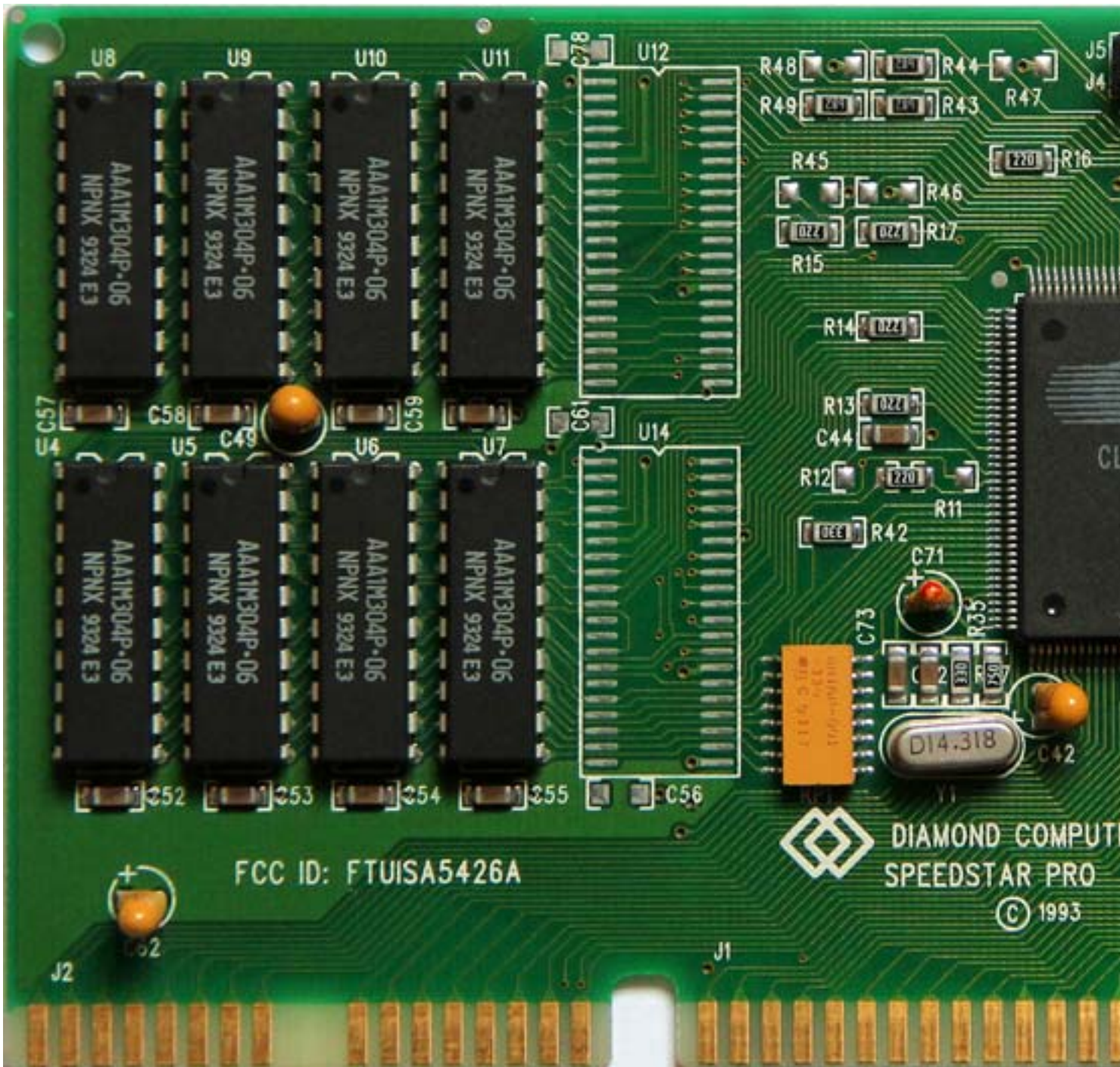
Monday, 28 September 2009 12:23 - Last Updated Thursday, 04 August 2011 10:05



Cirrus Logic CL-GD5426

Written by Vlask

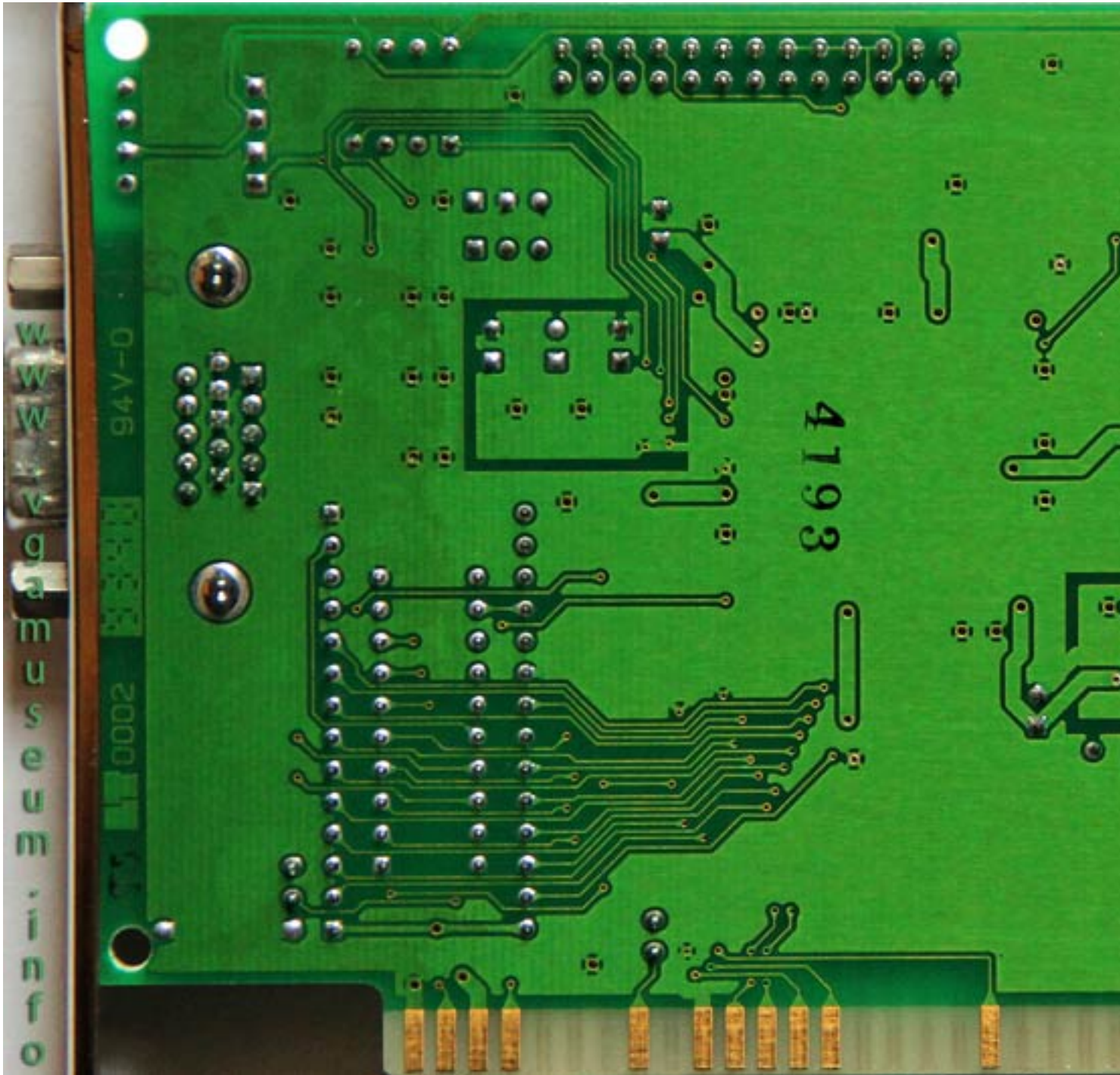
Monday, 28 September 2009 12:23 - Last Updated Thursday, 04 August 2011 10:05



Cirrus Logic CL-GD5426

Written by Vlask

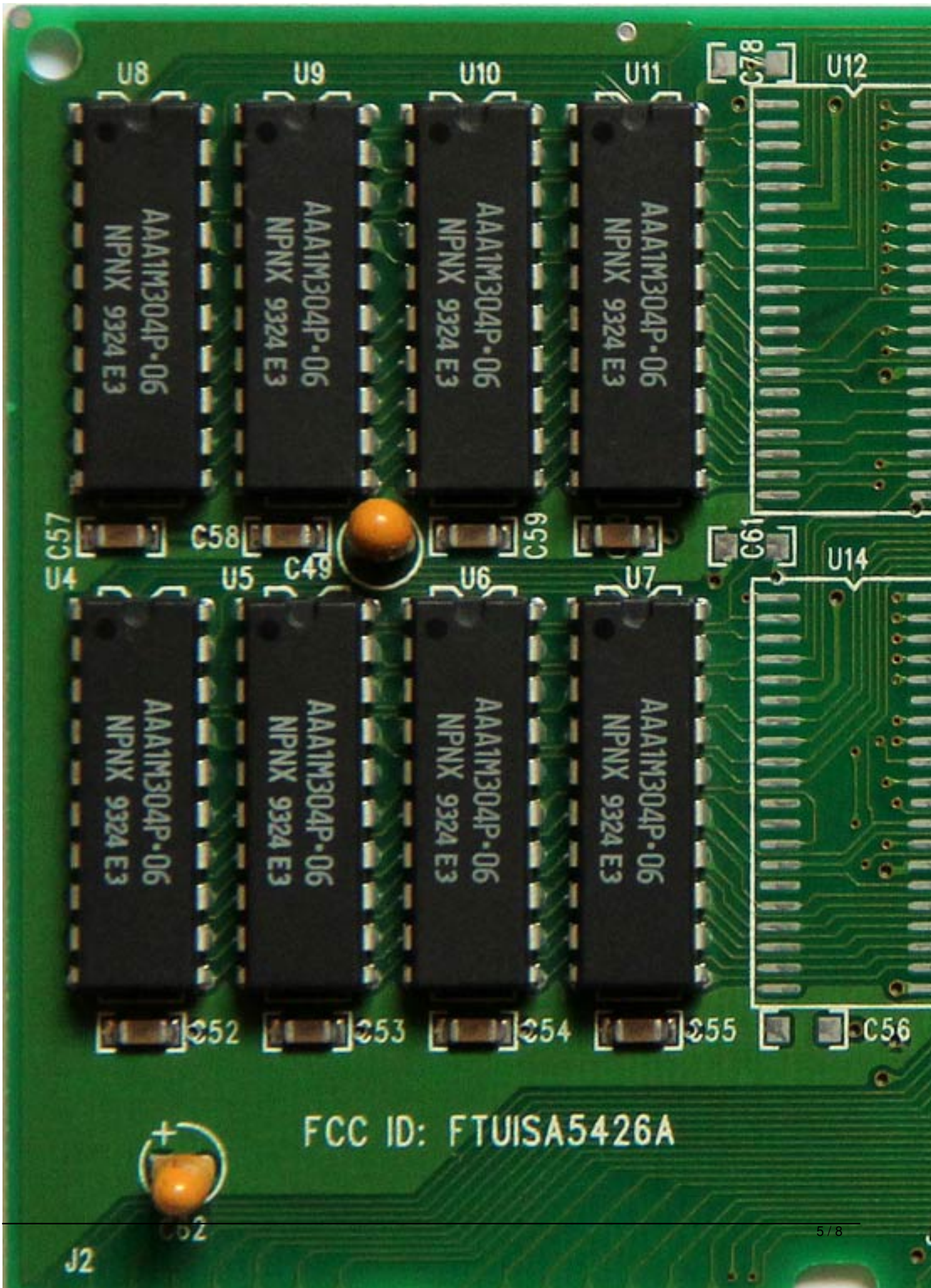
Monday, 28 September 2009 12:23 - Last Updated Thursday, 04 August 2011 10:05



Cirrus Logic CL-GD5426

Written by Vlask

Monday, 28 September 2009 12:23 - Last Updated Thursday, 04 August 2011 10:05



Cirrus Logic CL-GD5426

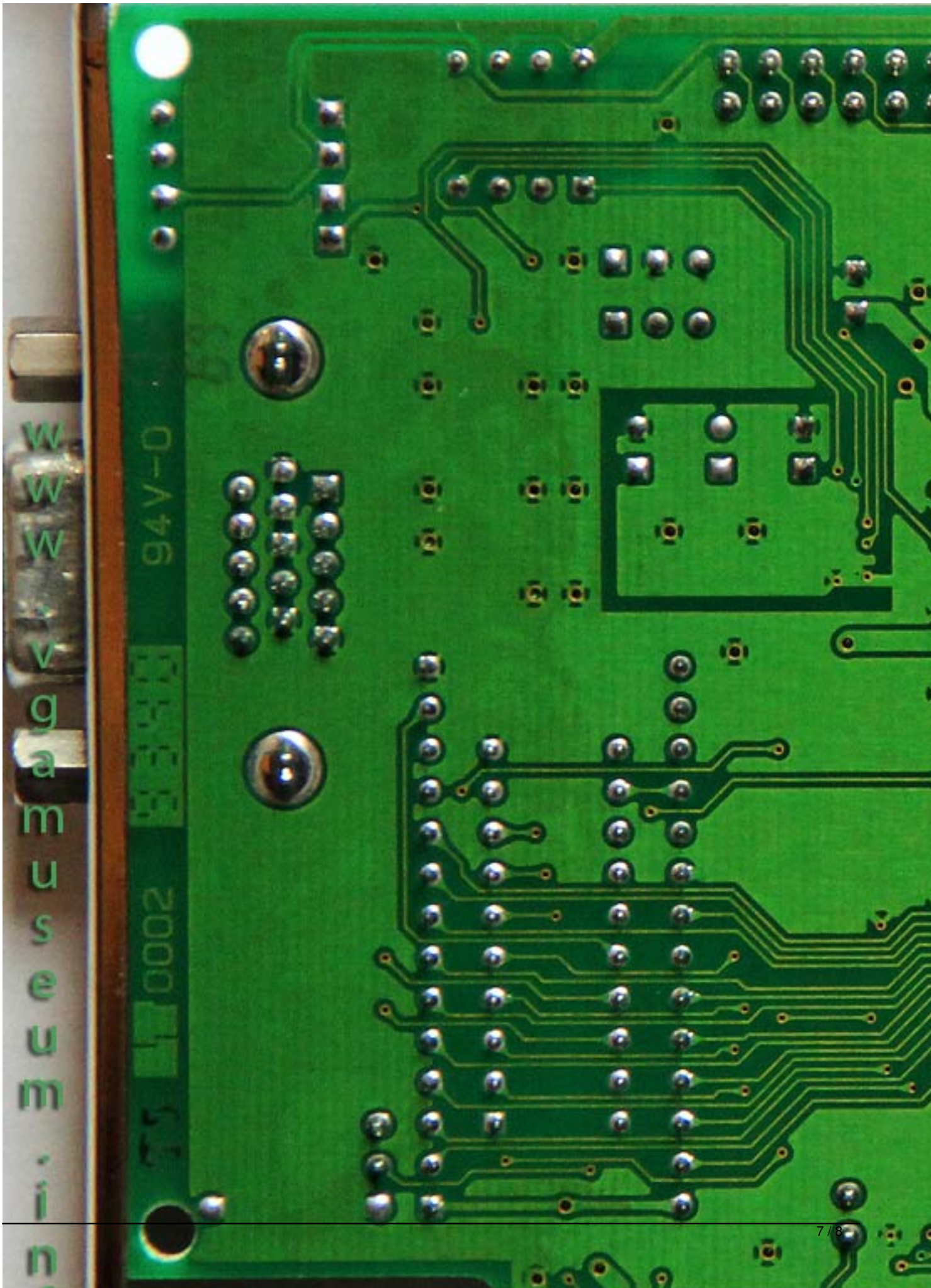
Written by Vlask

Monday, 28 September 2009 12:23 - Last Updated Thursday, 04 August 2011 10:05

Cirrus Logic CL-GD5426

Written by Vlask

Monday, 28 September 2009 12:23 - Last Updated Thursday, 04 August 2011 10:05



Cirrus Logic CL-GD5426

Written by Vlask

Monday, 28 September 2009 12:23 - Last Updated Thursday, 04 August 2011 10:05

{/webgallery}