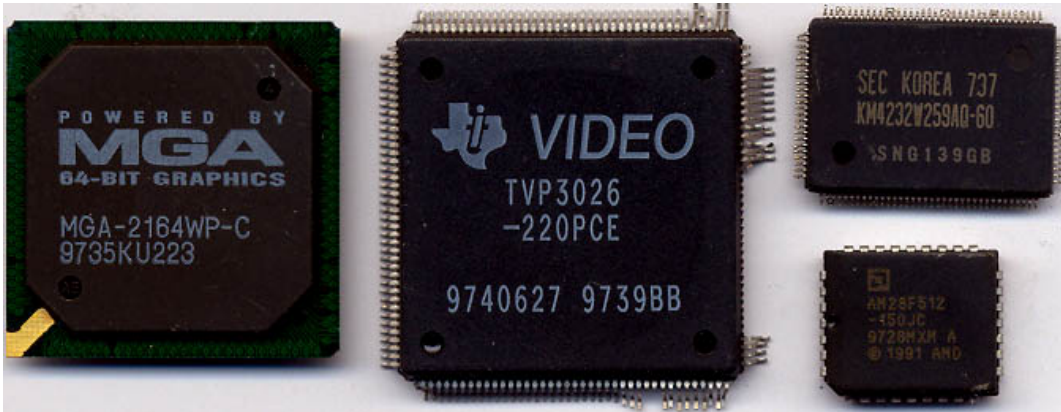


## Matrox MGA-2164W (Millennium II)

Written by Vlask

Sunday, 11 October 2009 16:37 - Last Updated Thursday, 25 July 2013 16:50

---



**Core:** 2164W (Mistral) 62/66MHz 64bit

**Memory:** 4/8MB(16MB max) WRAM 62/66MHz 64bit

**Year:** 1997 **Bus:** AGP1x / PCI

**Made:** NEC 0,35  $\mu\text{m}$  **Links:** [dell](#) [benchmark](#) [infoworld](#) [Vintage3D](#) [Datasheet](#) **Price:** \$279

**Bios:** [matrox](#)

**Variants:** AGP 4MB - 66MHz, PCI 8MB - 62MHz

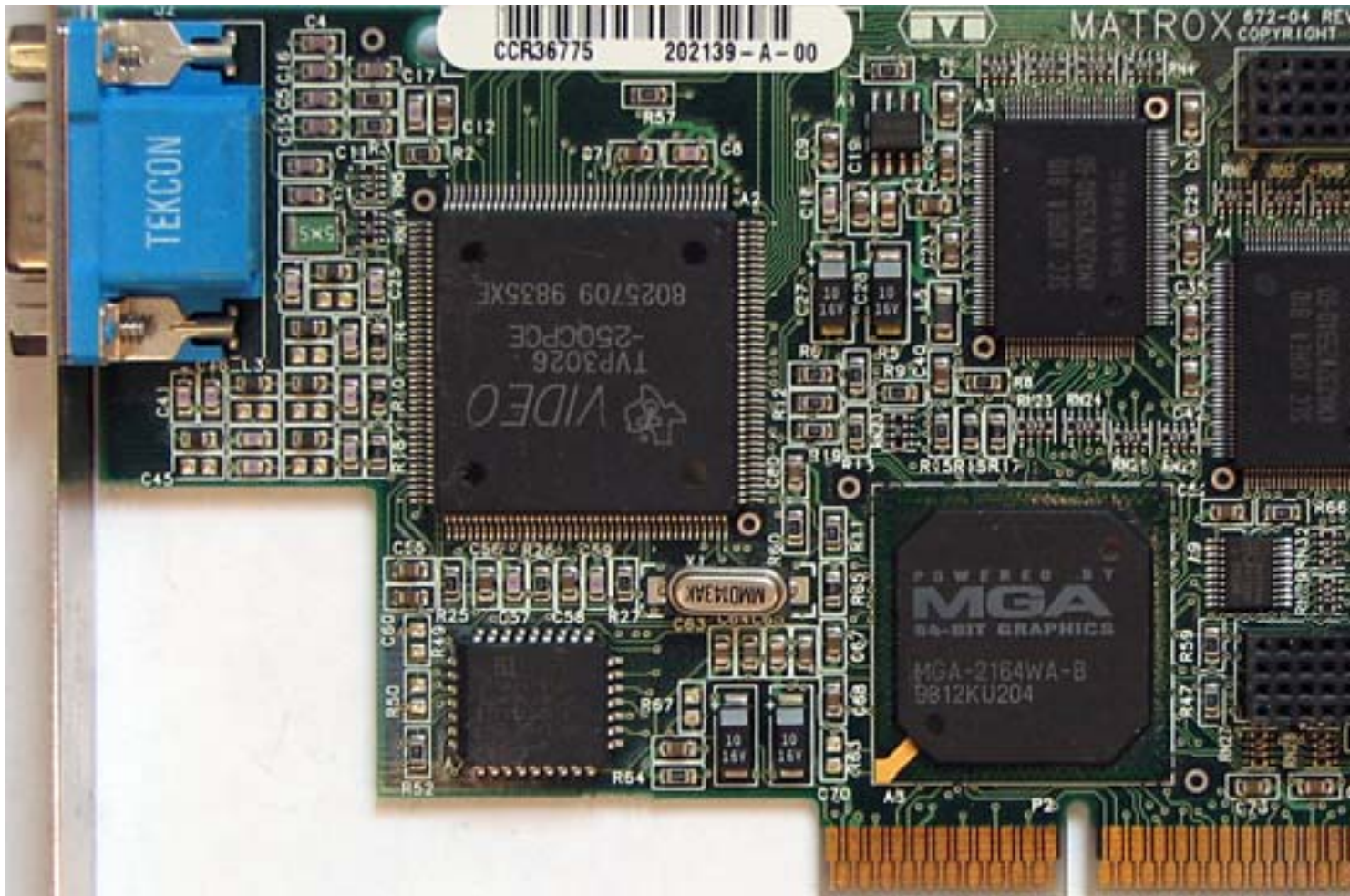
{webgallery}

# Matrox MGA-2164W (Millennium II)

Written by Vlask

Sunday, 11 October 2009 16:37 - Last Updated Thursday, 25 July 2013 16:50

---



# Matrox MGA-2164W (Millennium II)

Written by Vlask

Sunday, 11 October 2009 16:37 - Last Updated Thursday, 25 July 2013 16:50

---

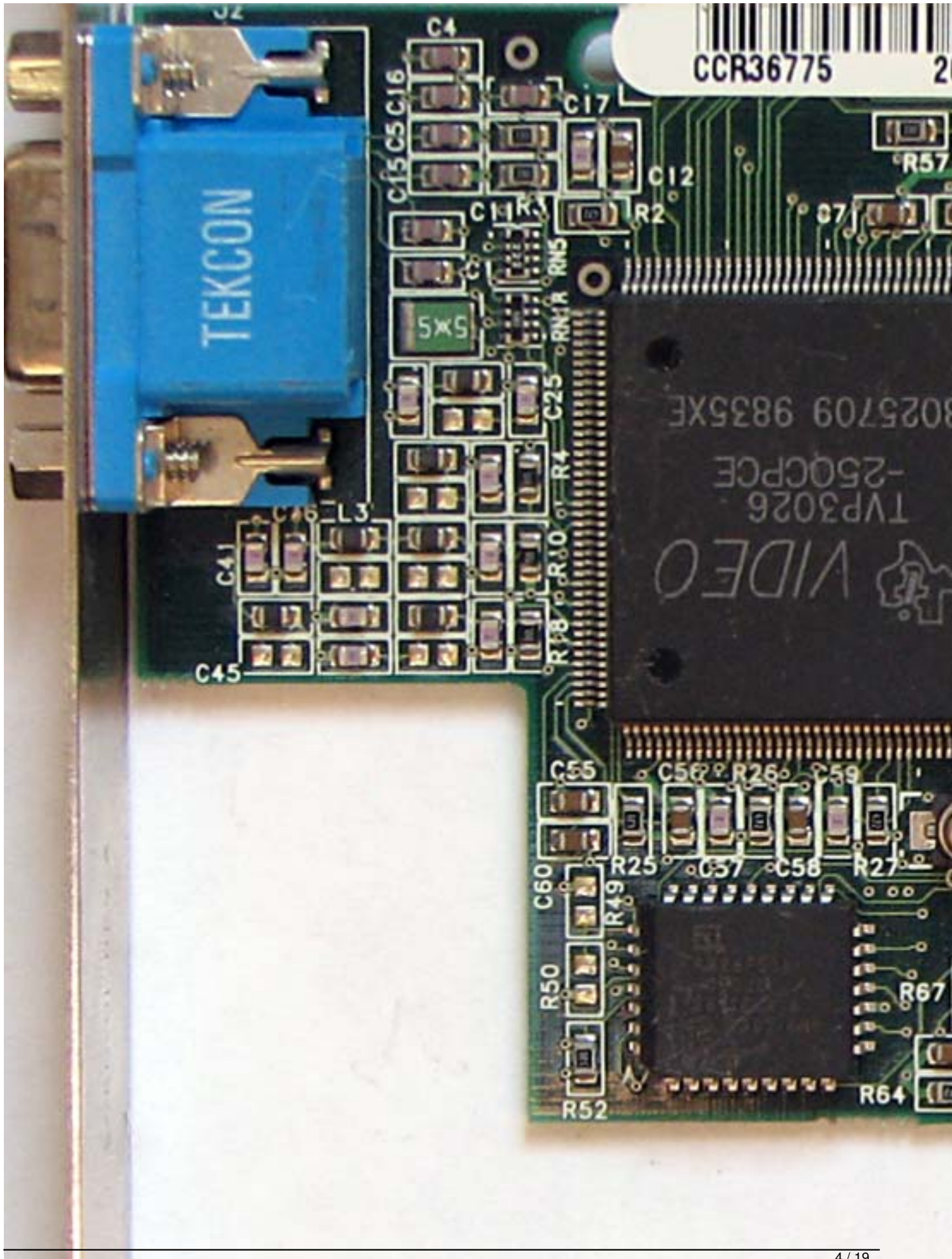




# Matrox MGA-2164W (Millennium II)

Written by Vlask

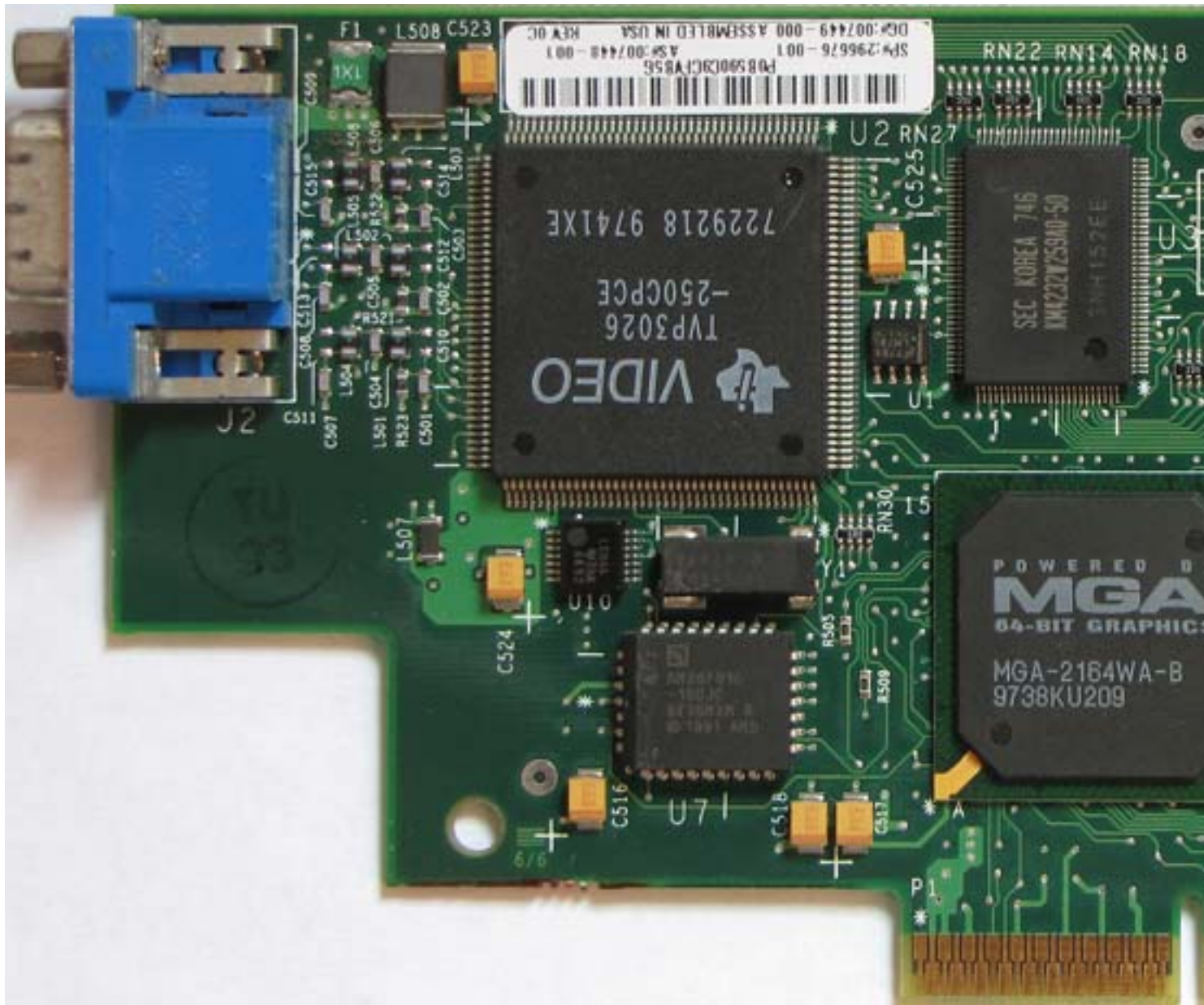
Sunday, 11 October 2009 16:37 - Last Updated Thursday, 25 July 2013 16:50



# Matrox MGA-2164W (Millennium II)

Written by Vlask

Sunday, 11 October 2009 16:37 - Last Updated Thursday, 25 July 2013 16:50



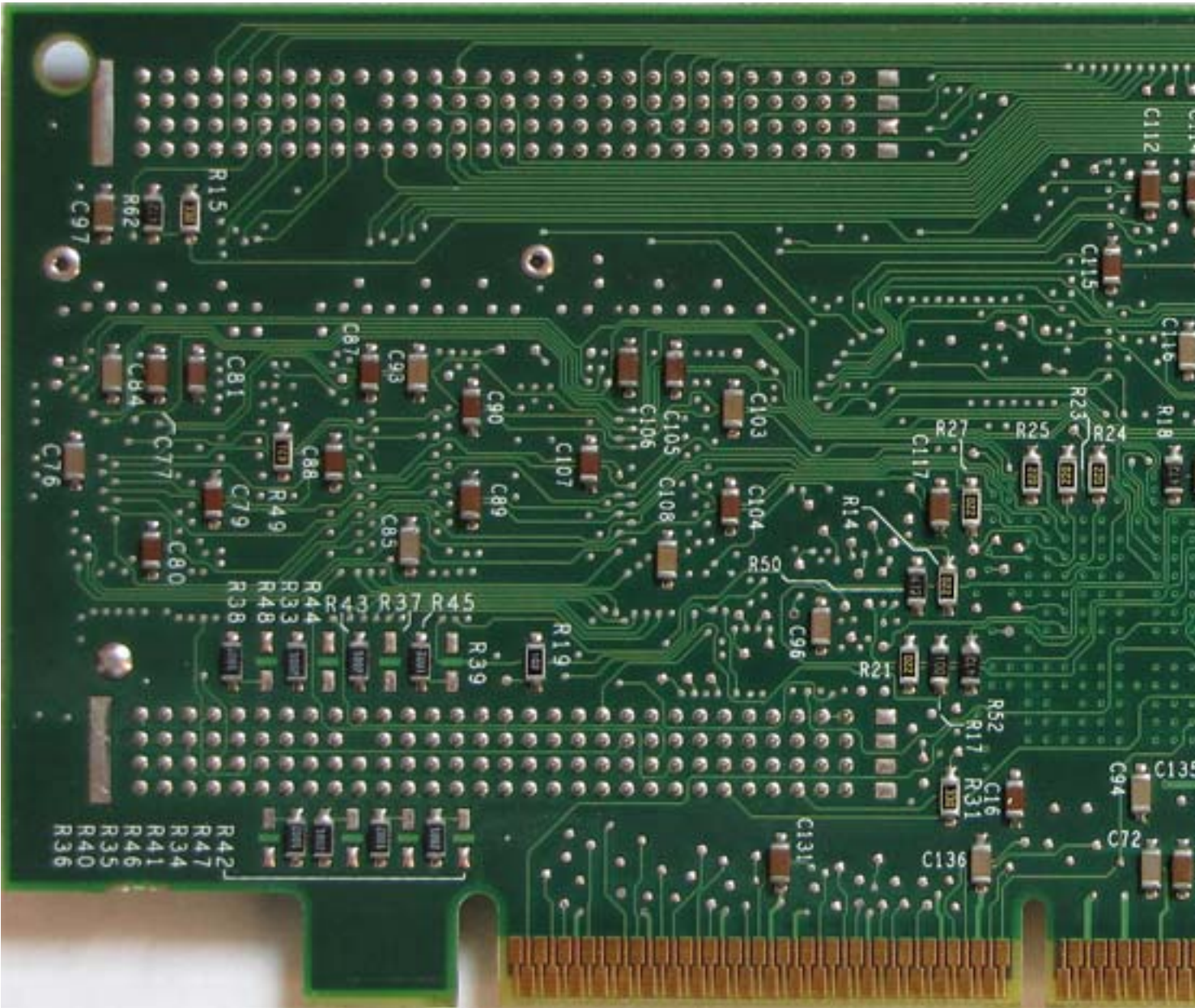


# Matrox MGA-2164W (Millennium II)

Written by Vlask

Sunday, 11 October 2009 16:37 - Last Updated Thursday, 25 July 2013 16:50

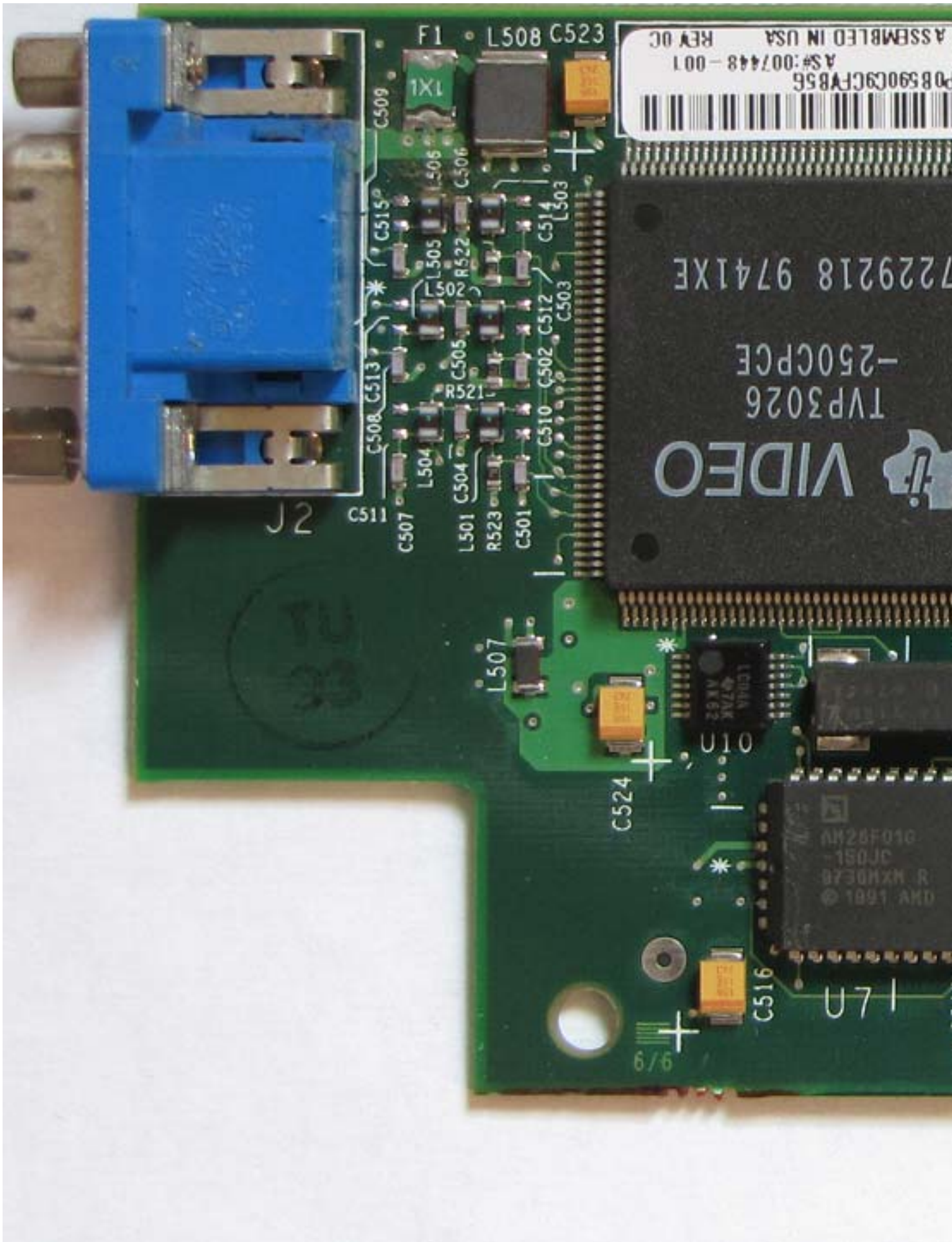
---



# Matrox MGA-2164W (Millennium II)

Written by Vlask

Sunday, 11 October 2009 16:37 - Last Updated Thursday, 25 July 2013 16:50



## **Matrox MGA-2164W (Millennium II)**

Written by Vlask

Sunday, 11 October 2009 16:37 - Last Updated Thursday, 25 July 2013 16:50

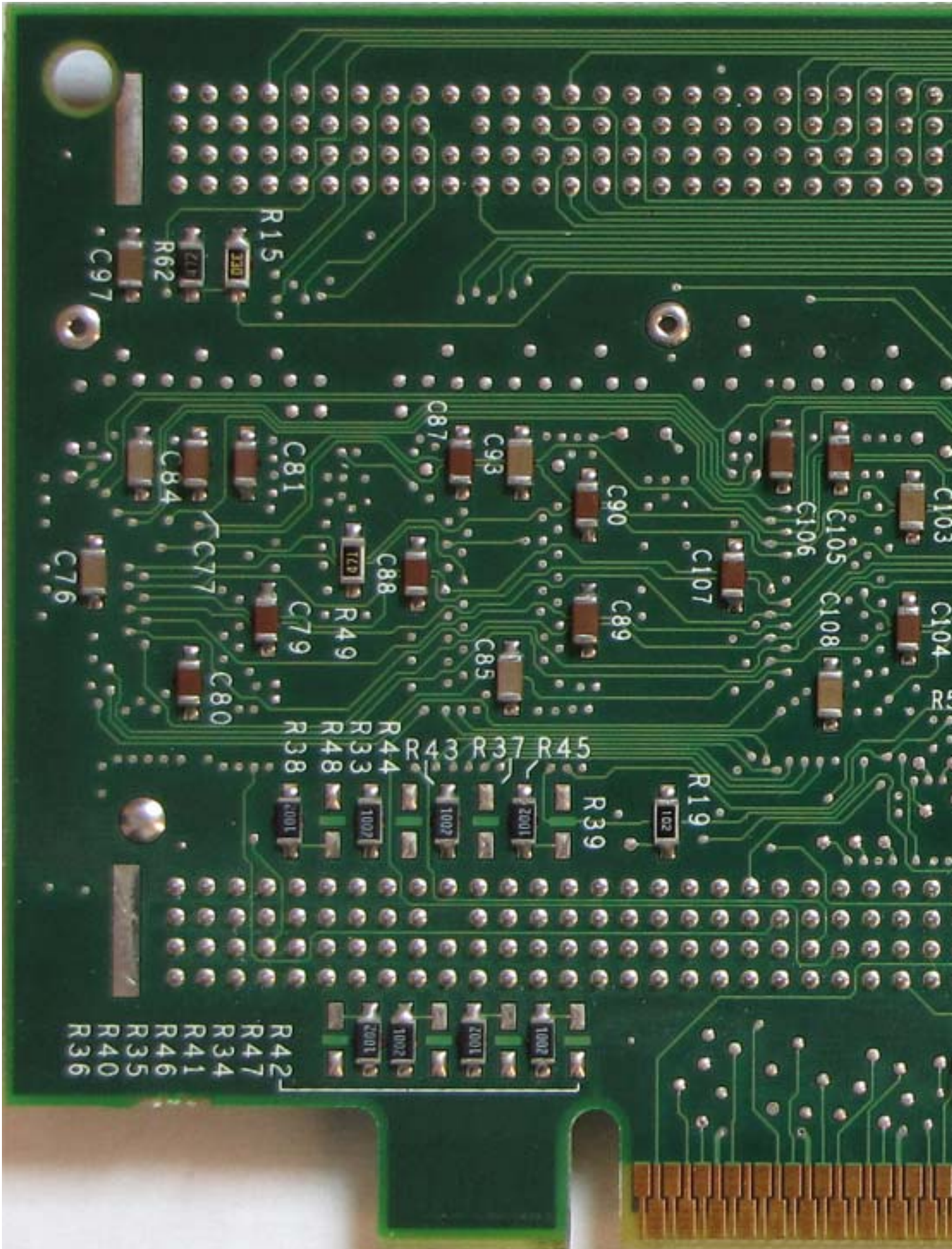
---



# Matrox MGA-2164W (Millennium II)

Written by Vlask

Sunday, 11 October 2009 16:37 - Last Updated Thursday, 25 July 2013 16:50

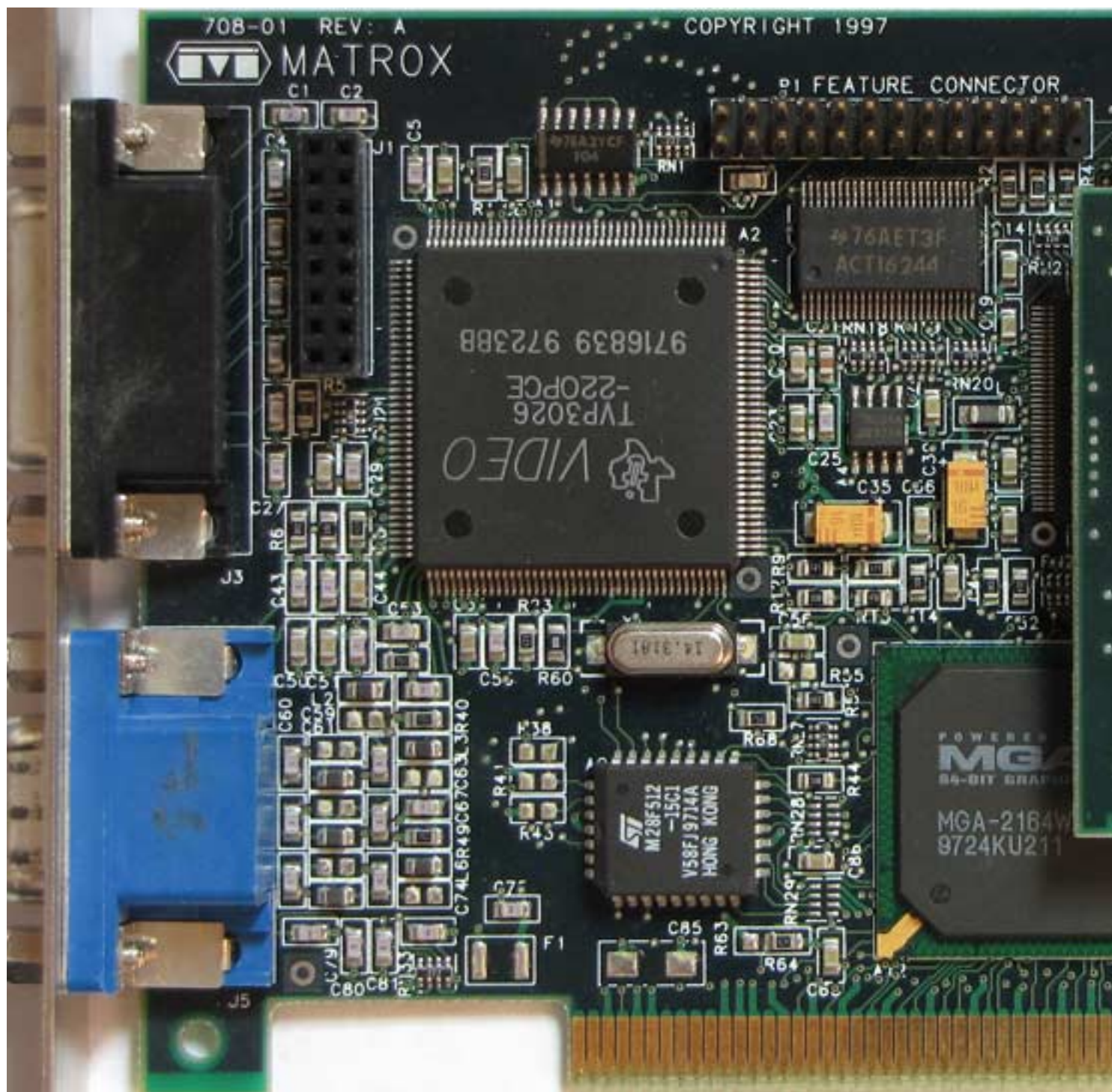




# Matrox MGA-2164W (Millennium II)

Written by Vlask

Sunday, 11 October 2009 16:37 - Last Updated Thursday, 25 July 2013 16:50



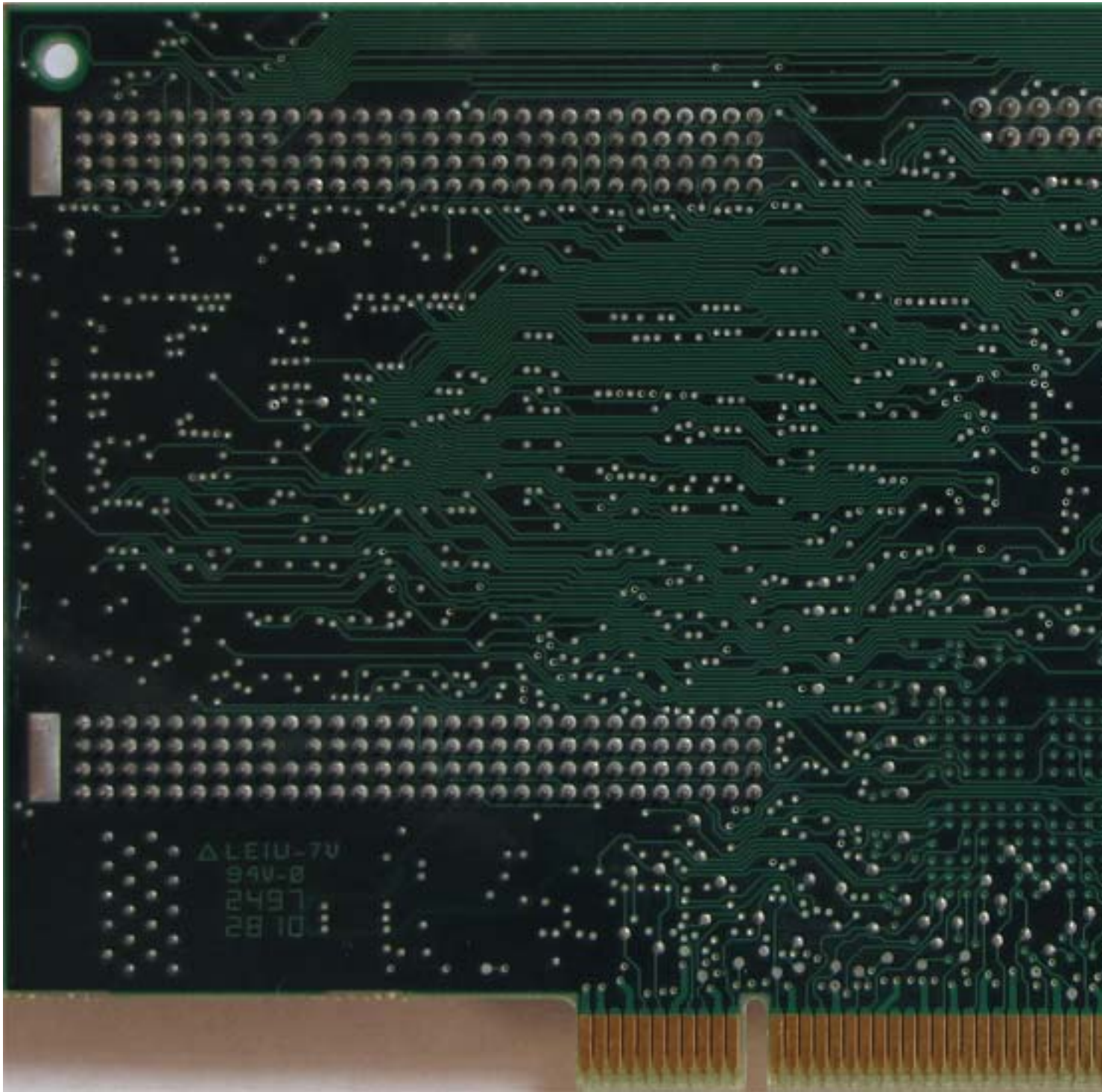


# Matrox MGA-2164W (Millennium II)

Written by Vlask

Sunday, 11 October 2009 16:37 - Last Updated Thursday, 25 July 2013 16:50

---

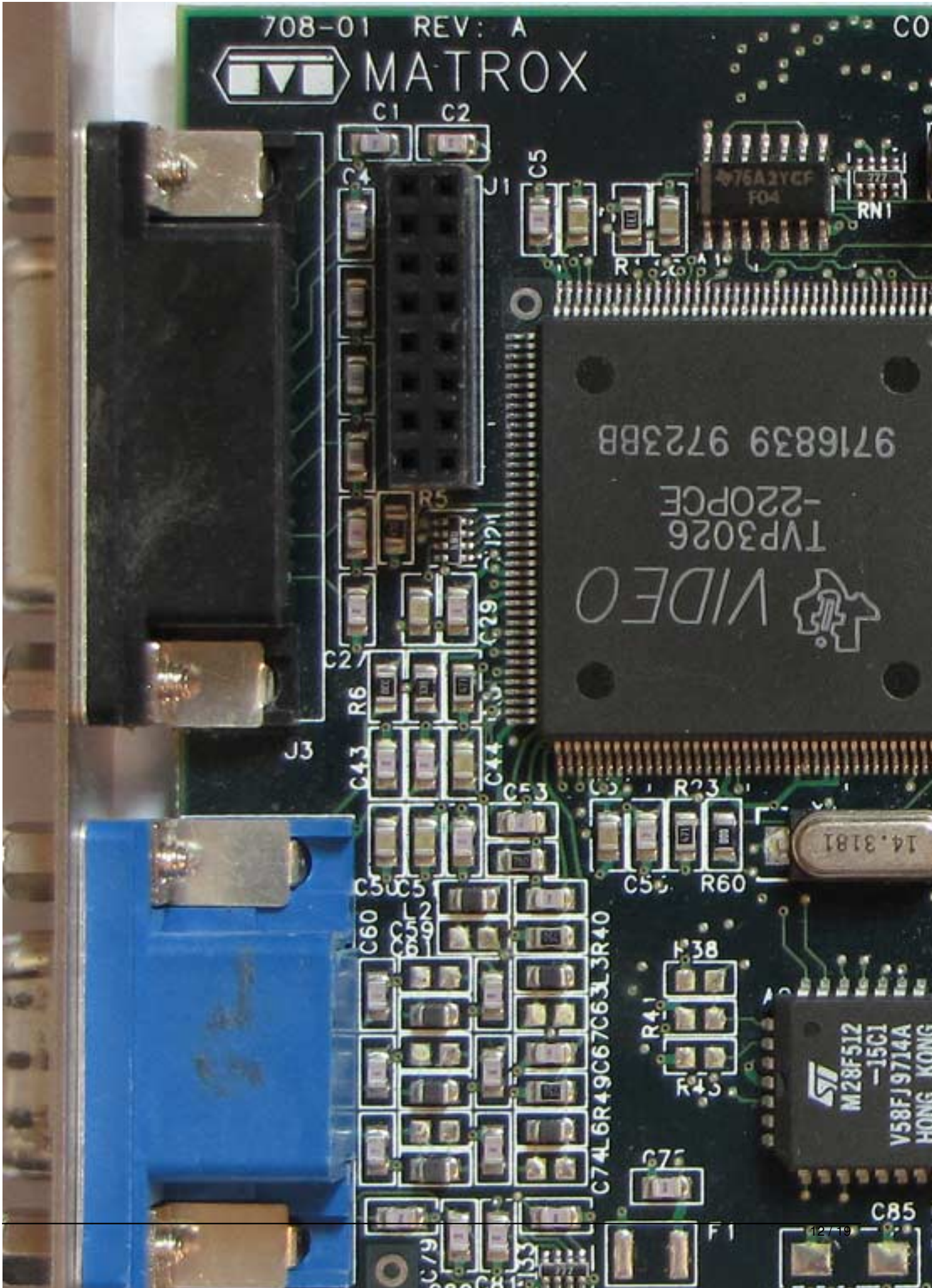




# Matrox MGA-2164W (Millennium II)

Written by Vlask

Sunday, 11 October 2009 16:37 - Last Updated Thursday, 25 July 2013 16:50





## Matrox MGA-2164W (Millennium II)

Written by Vlask

Sunday, 11 October 2009 16:37 - Last Updated Thursday, 25 July 2013 16:50

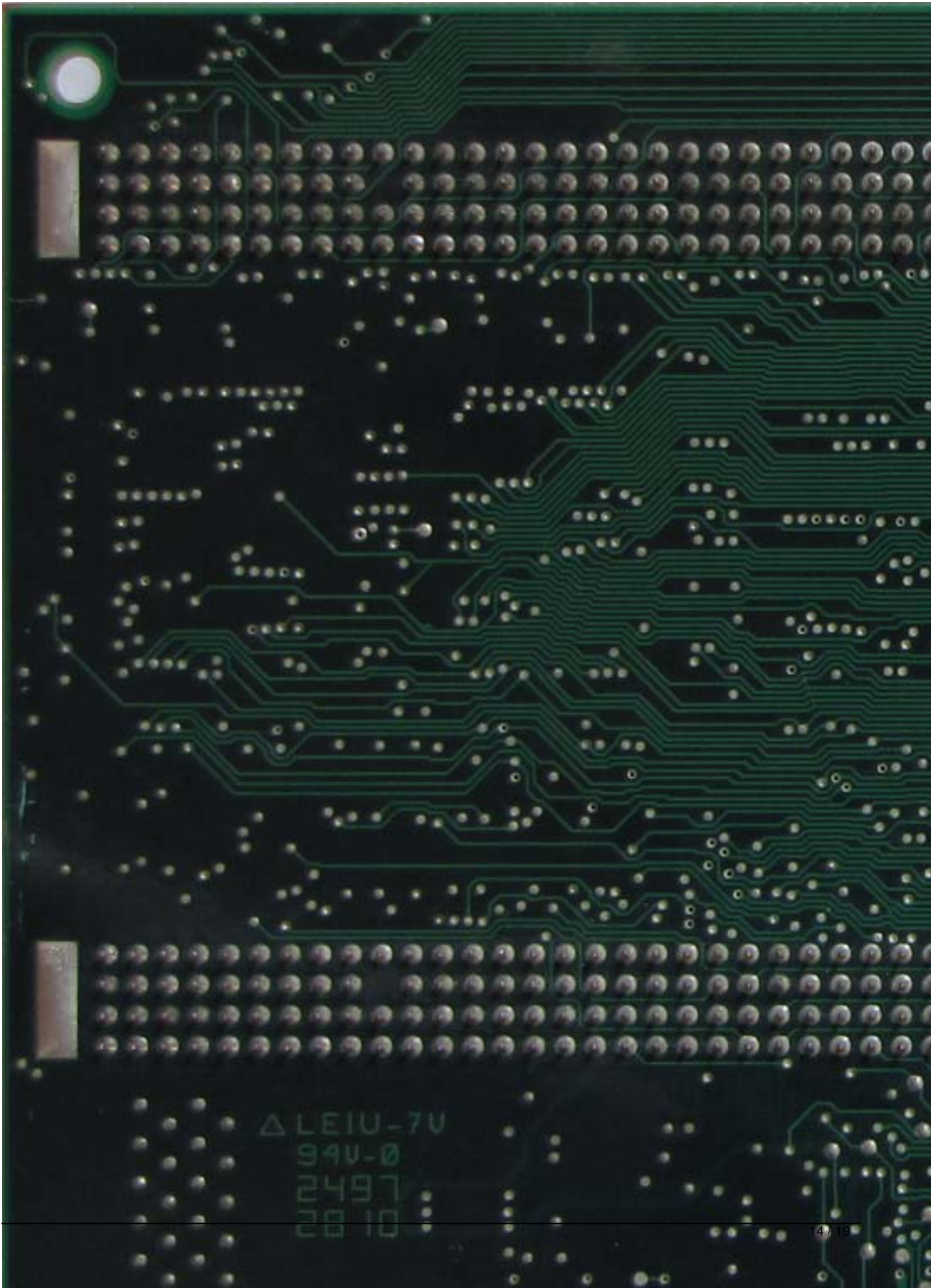
---

**Matrox MGA-2164W (Millennium II)**

Written by Vlask

Sunday, 11 October 2009 16:37 - Last Updated Thursday, 25 July 2013 16:50

---





# Matrox MGA-2164W (Millennium II)

Written by Vlask

Sunday, 11 October 2009 16:37 - Last Updated Thursday, 25 July 2013 16:50

The screenshot displays the Matrox Millennium II driver control panel. It features a top navigation bar with icons for Information, Hot Keys, Color, Monitor, and Settings. The main content is divided into two sections: Graphics hardware and Graphics software. The Graphics hardware section lists the following details:

Model:	Matrox Millennium II
Accelerator:	2164W
Memory:	8 MB
Memory type:	WRAM
RAMDAC speed:	220 MHz
Serial number:	AAM21137

Below the hardware information is a 'Features' section with an empty text box. The Graphics software section lists the following details:

VGA BIOS version:	1.1
Display driver version:	4.10.01.4110
VDD version:	4.10.01.4110
Matrox PowerDesk version:	4.11.011
DirectDraw/Direct3D driver version:	4.10.01.4110
Microsoft DirectX version:	Unknown

At the bottom, there is another navigation bar with icons for Information, Hot Keys, Color, Monitor, and Settings. Below this is a tree view showing the 'Features' and 'Display Schemes' sections. The 'Features' section includes:

- CenterWINDOW
- MaxVIEW
- PanEND
- PanHOME
- PanLOCK
- PixelTOUCH

The 'Display Schemes' section includes:

- Elevator
- High Color
- Low Res
- Panoramic
- Rainbow in 800
- Trusty 8bits
- Virtuality

# Matrox MGA-2164W (Millennium II)

Written by Vlask

Sunday, 11 October 2009 16:37 - Last Updated Thursday, 25 July 2013 16:50

The screenshot shows the 'Color' control panel of the Matrox Monitor Color Control software. At the top, there are five tabs: 'Information', 'Hot Keys', 'Color', 'Monitor', and 'Settings', with 'Color' currently selected. The main area is divided into several sections:

- Contrast (Gamma):** A section containing a 'Link' checkbox (unchecked) and three vertical sliders for 'Red', 'Green', and 'Blue'. Each slider has a '+' sign at the top and a '-' sign at the bottom. The sliders are currently set to approximately the middle position.
- Color Temperature:** A horizontal slider ranging from 'Warm' on the left to 'Cool' on the right. The slider is positioned slightly past the midpoint towards 'Cool'.
- Reset:** A large rectangular button labeled 'Reset' located below the sliders.
- Version and Copyright:** A text box at the bottom containing the following information:
  - Matrox Monitor Color Control Version 1.0
  - Copyright © 1996-1998 Matrox Graphics Inc.
  - Copyright © 1996 Sonnetech Ltd.
  - Copyright © 1996 HGC Associates.

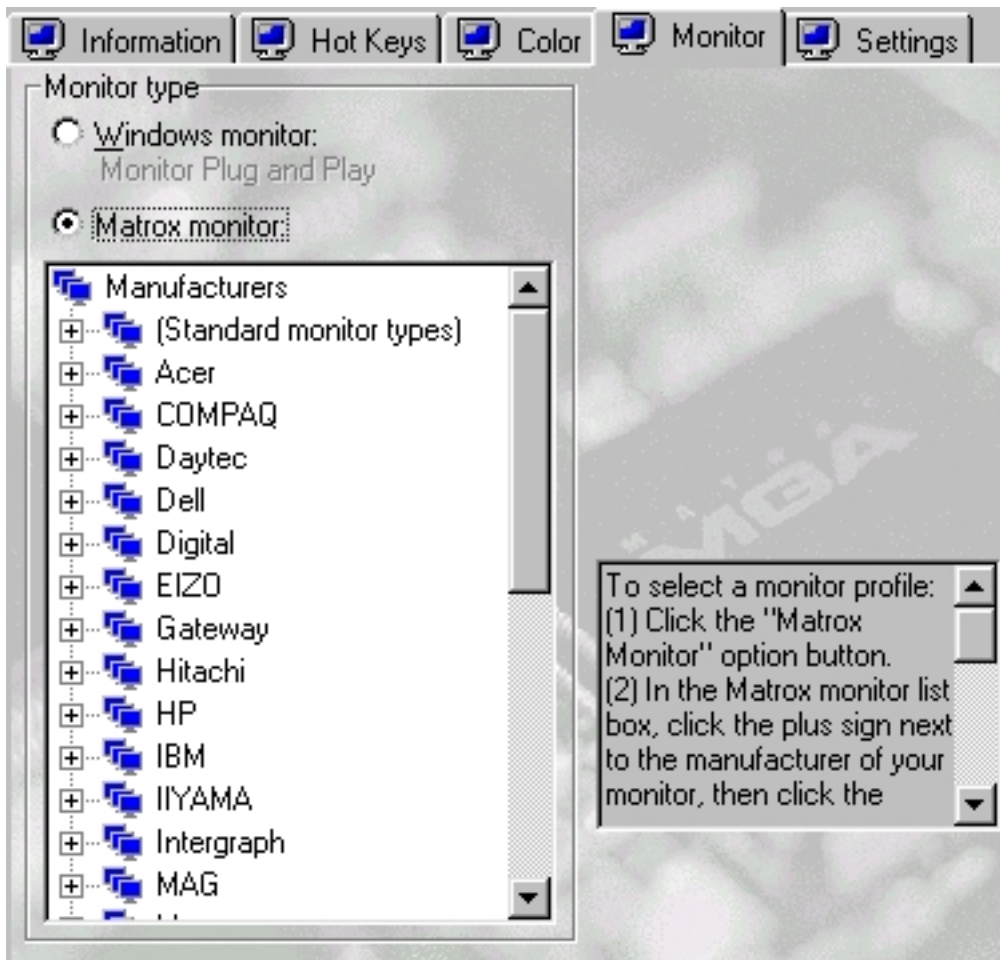


## Matrox MGA-2164W (Millennium II)

Written by Vlask

Sunday, 11 October 2009 16:37 - Last Updated Thursday, 25 July 2013 16:50

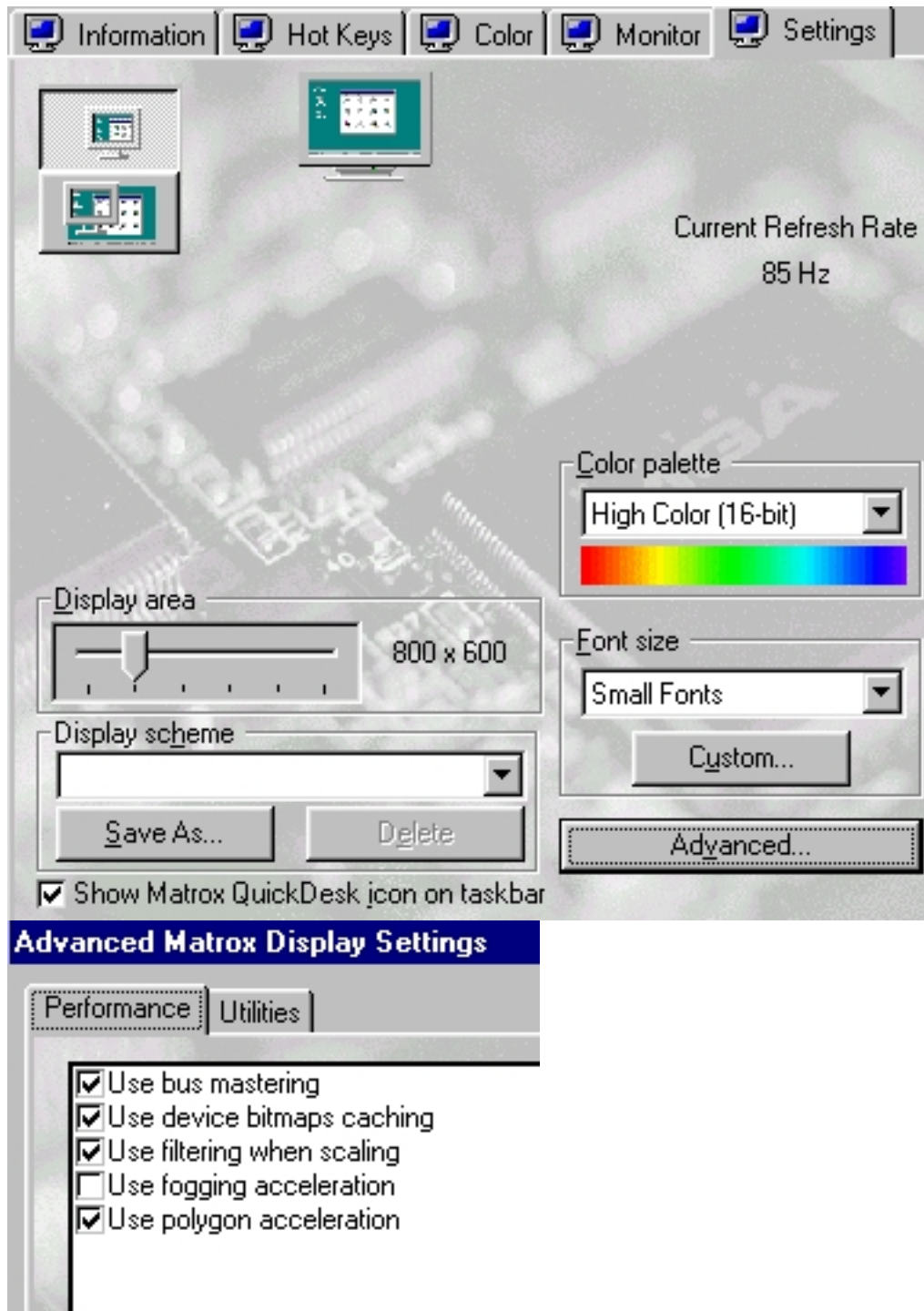
---



## Matrox MGA-2164W (Millennium II)

Written by Vlask

Sunday, 11 October 2009 16:37 - Last Updated Thursday, 25 July 2013 16:50





## Matrox MGA-2164W (Millennium II)

Written by Vlask

Sunday, 11 October 2009 16:37 - Last Updated Thursday, 25 July 2013 16:50

---

### Advanced Matrox Display Settings

Performance

Utilities

- Prompt before changing display settings
- Automatically save/restore desktop icon positions
- Automatically save/restore window positions
- Show menus in visible display
- Prompt before changing color palette

{/webgallery}