

Matrox Millennium G200

Written by Vlask

Sunday, 25 September 2011 11:59 - Last Updated Thursday, 25 July 2013 17:01



Core: MGA-G200 (Eclipse) 84,4MHz 128bit

Memory: 8MB(16MB max) SGR 112,5MHz 64bit

Year: 1998 **Bus:** AGP2x

Made: 0,35 μ m **Links:** [Wikipedia](#) [Tom's Hardware](#) [Opengl](#) [Datasheet](#)

Bios: [matrox](#)

{webgallery}

Matrox Millennium G200

Written by Vlask

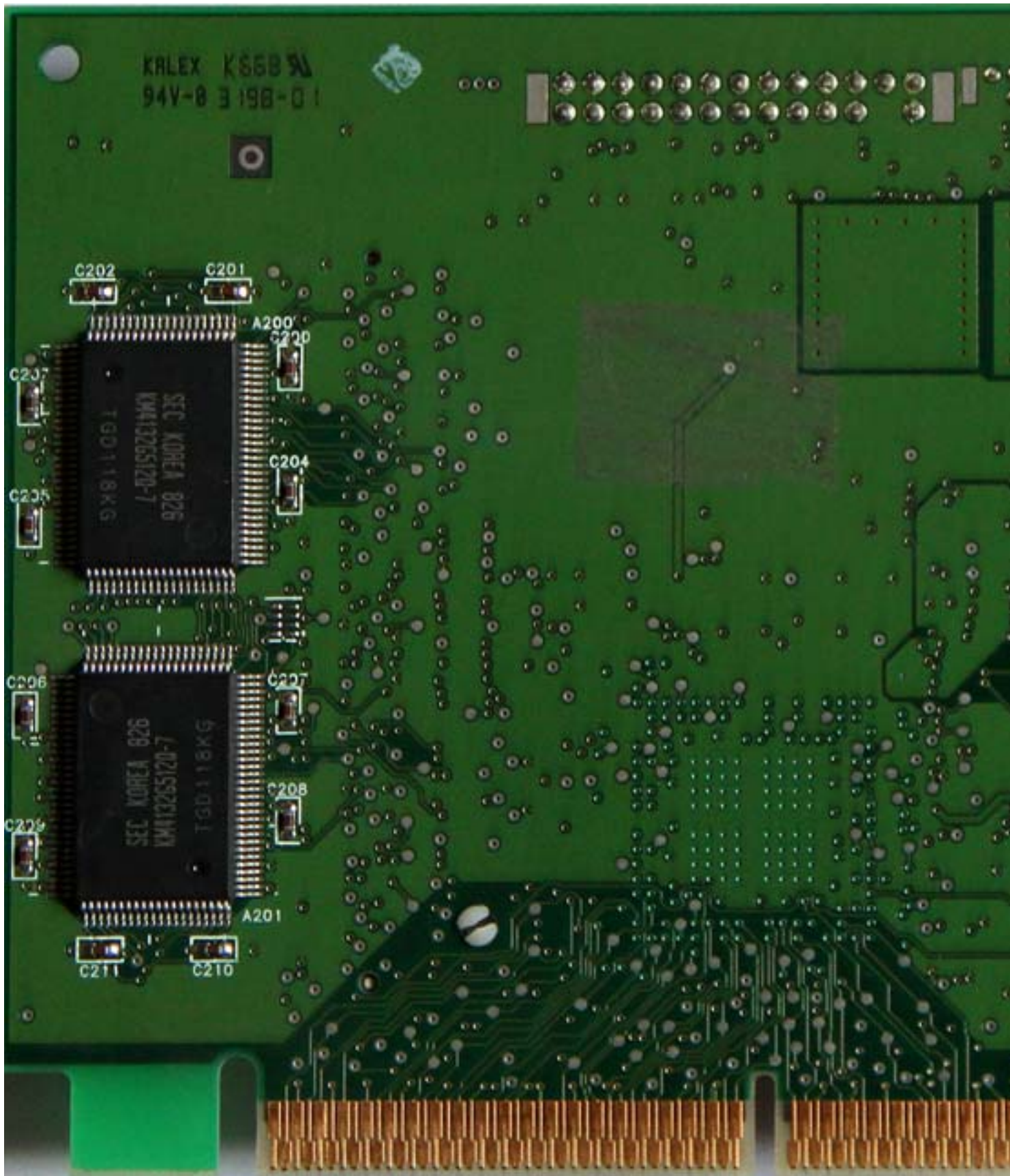
Sunday, 25 September 2011 11:59 - Last Updated Thursday, 25 July 2013 17:01



Matrox Millennium G200

Written by Vlask

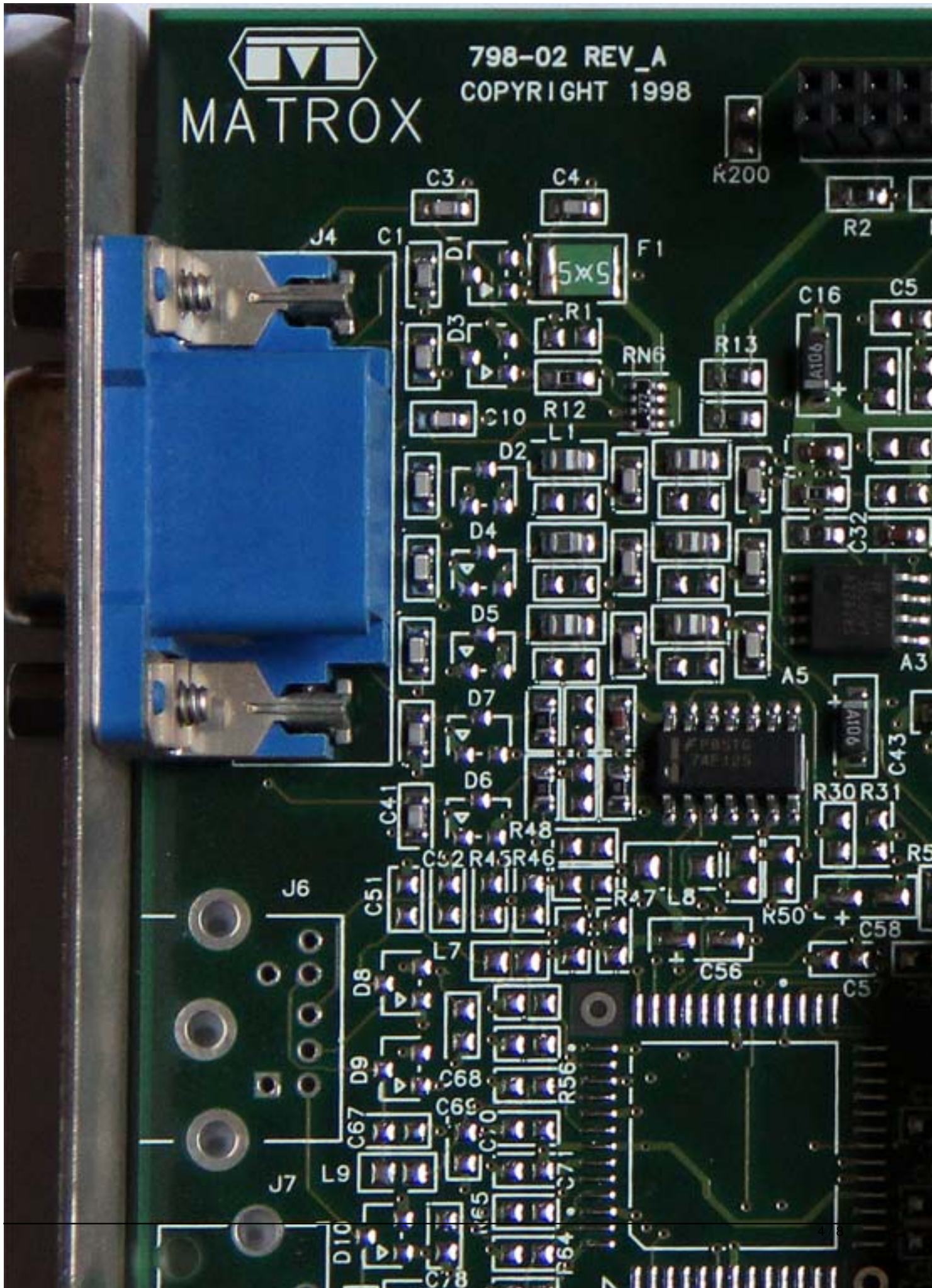
Sunday, 25 September 2011 11:59 - Last Updated Thursday, 25 July 2013 17:01



Matrox Millennium G200

Written by Vlask

Sunday, 25 September 2011 11:59 - Last Updated Thursday, 25 July 2013 17:01



Matrox Millennium G200

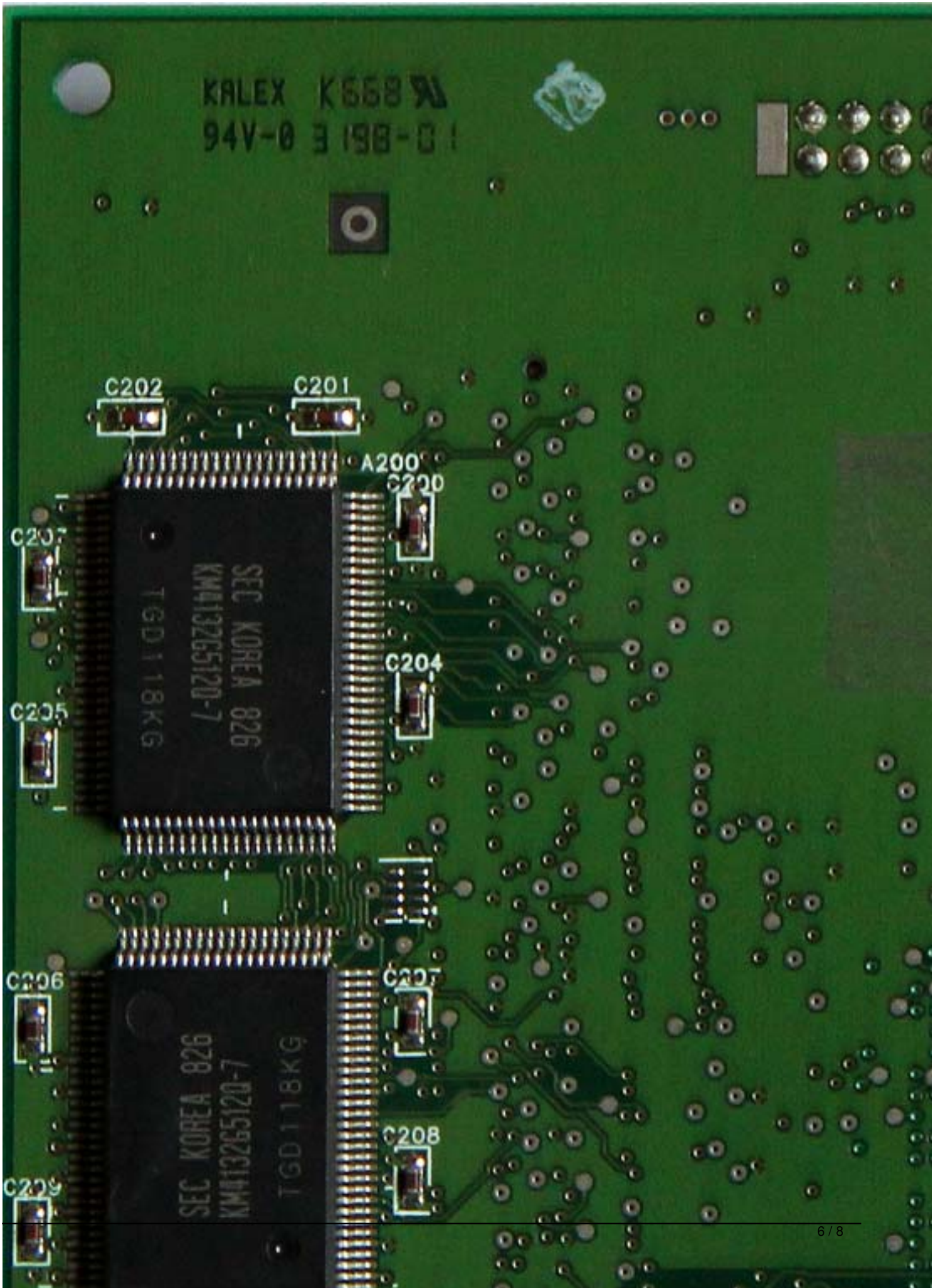
Written by Vlask

Sunday, 25 September 2011 11:59 - Last Updated Thursday, 25 July 2013 17:01

Matrox Millennium G200

Written by Vlask

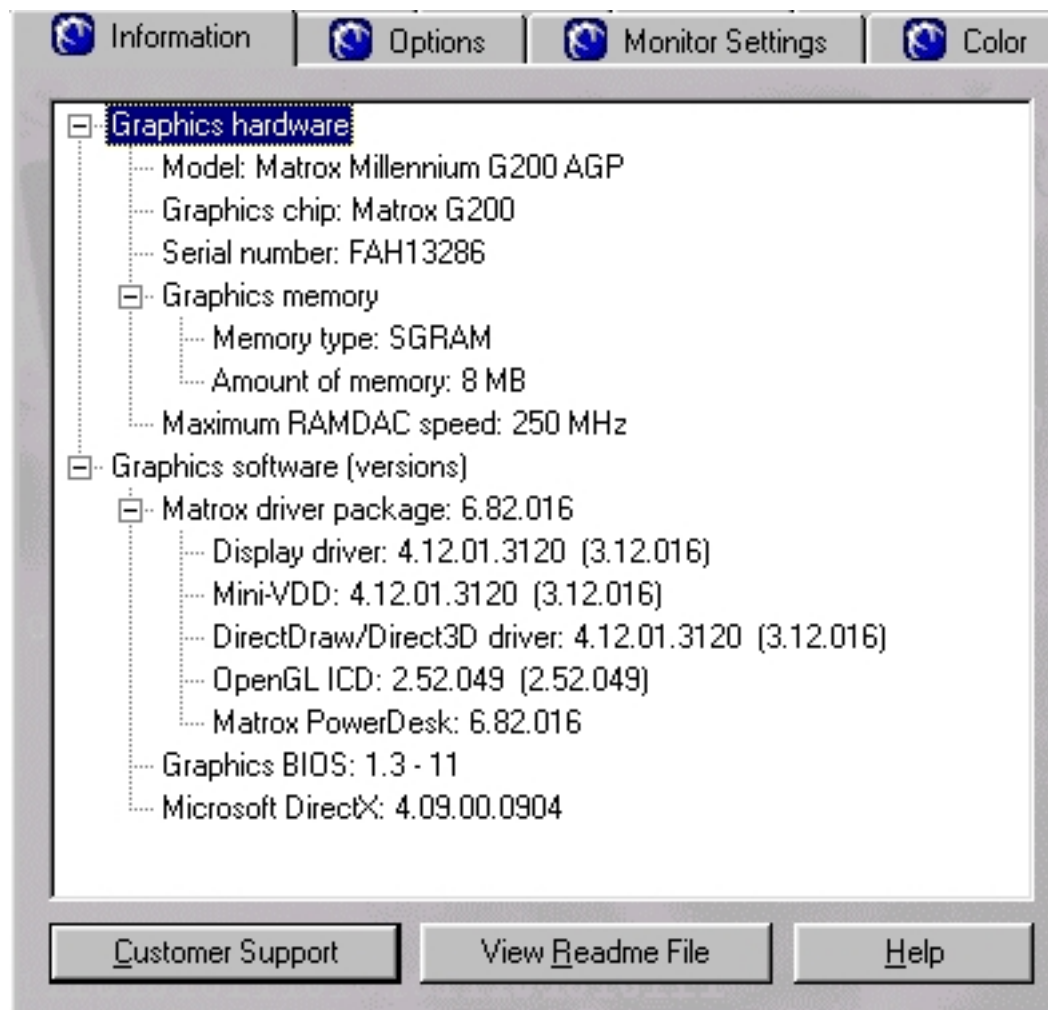
Sunday, 25 September 2011 11:59 - Last Updated Thursday, 25 July 2013 17:01



Matrox Millennium G200

Written by Vlask

Sunday, 25 September 2011 11:59 - Last Updated Thursday, 25 July 2013 17:01



The screenshot shows a window titled "Matrox Millennium G200" with four tabs: "Information", "Options", "Monitor Settings", and "Color". The "Information" tab is active, displaying a tree view of system information. The tree is expanded to show "Graphics hardware", which includes:

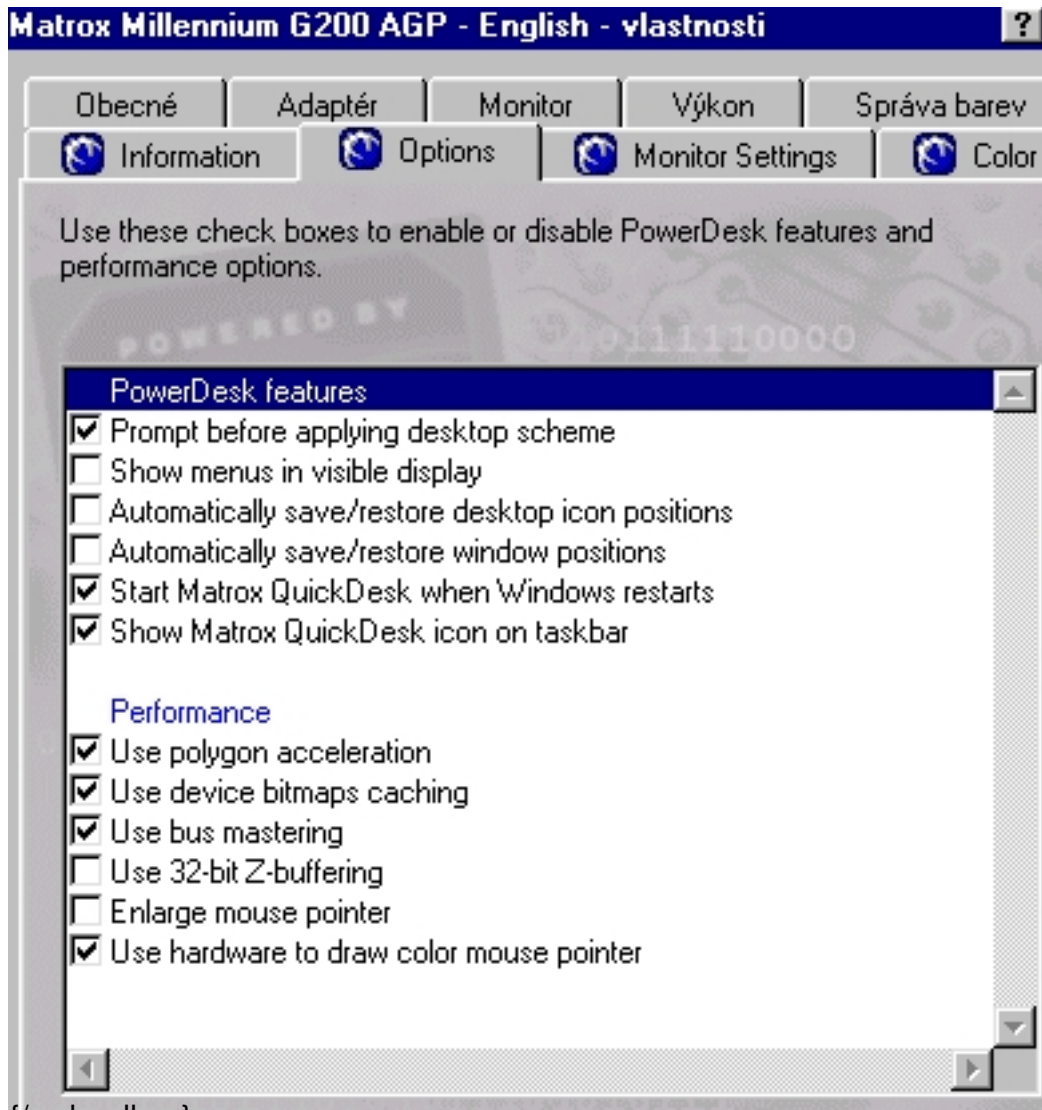
- Model: Matrox Millennium G200 AGP
- Graphics chip: Matrox G200
- Serial number: FAH13286
- Graphics memory
 - Memory type: SGRAM
 - Amount of memory: 8 MB
 - Maximum RAMDAC speed: 250 MHz
- Graphics software (versions)
 - Matrox driver package: 6.82.016
 - Display driver: 4.12.01.3120 (3.12.016)
 - Mini-VDD: 4.12.01.3120 (3.12.016)
 - DirectDraw/Direct3D driver: 4.12.01.3120 (3.12.016)
 - OpenGL ICD: 2.52.049 (2.52.049)
 - Matrox PowerDesk: 6.82.016
 - Graphics BIOS: 1.3 - 11
 - Microsoft DirectX: 4.09.00.0904

At the bottom of the window, there are three buttons: "Customer Support", "View Readme File", and "Help".

Matrox Millennium G200

Written by Vlask

Sunday, 25 September 2011 11:59 - Last Updated Thursday, 25 July 2013 17:01



{/webgallery}