

NVIDIA Quadro

Written by Vlask

Sunday, 01 April 2012 12:36 - Last Updated Sunday, 05 May 2013 23:13



Core: NV10 135MHz 256bit

Memory: 64MB SDR / DDR 166 / 333MHz 128bit

Year: 1999 **Bus:** AGP 4x / AGP Pro

Made: TSMC 220nm **Price:** \$850 **Links:** [Hothardware](#) [Wikipedia](#) [Opengl](#) [Press](#)

Bios: [Elsa](#)

Note: ELSA GLoria II PRO have DDR memory and AGP Pro interface. Used by Dell in his workstation line.

{webgallery}

NVIDIA Quadro

Written by Vlask

Sunday, 01 April 2012 12:36 - Last Updated Sunday, 05 May 2013 23:13



NVIDIA Quadro

Written by Vlask

Sunday, 01 April 2012 12:36 - Last Updated Sunday, 05 May 2013 23:13



NVIDIA Quadro

Written by Vlask

Sunday, 01 April 2012 12:36 - Last Updated Sunday, 05 May 2013 23:13



NVIDIA Quadro

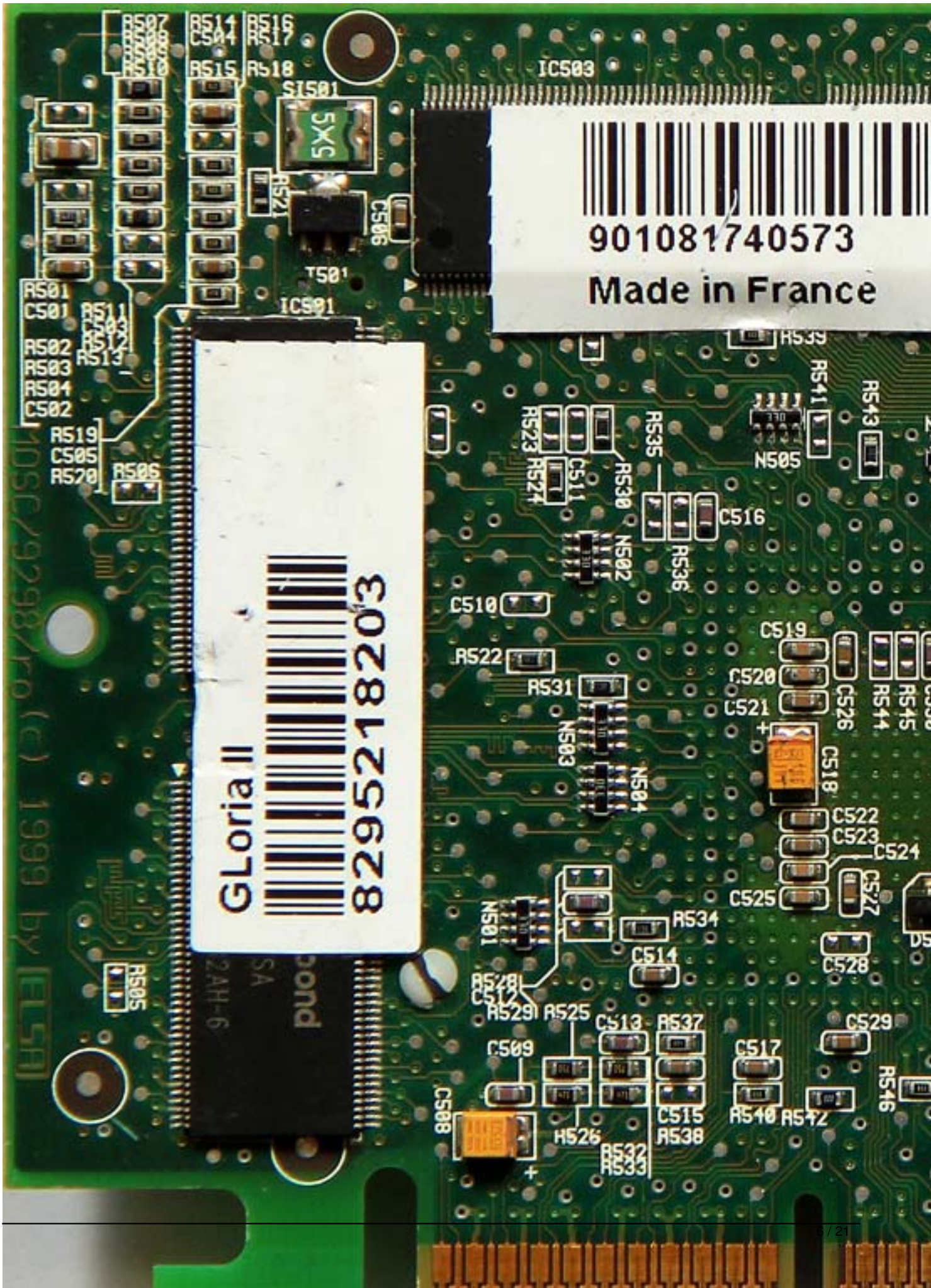
Written by Vlask

Sunday, 01 April 2012 12:36 - Last Updated Sunday, 05 May 2013 23:13

NVIDIA Quadro

Written by Vlask

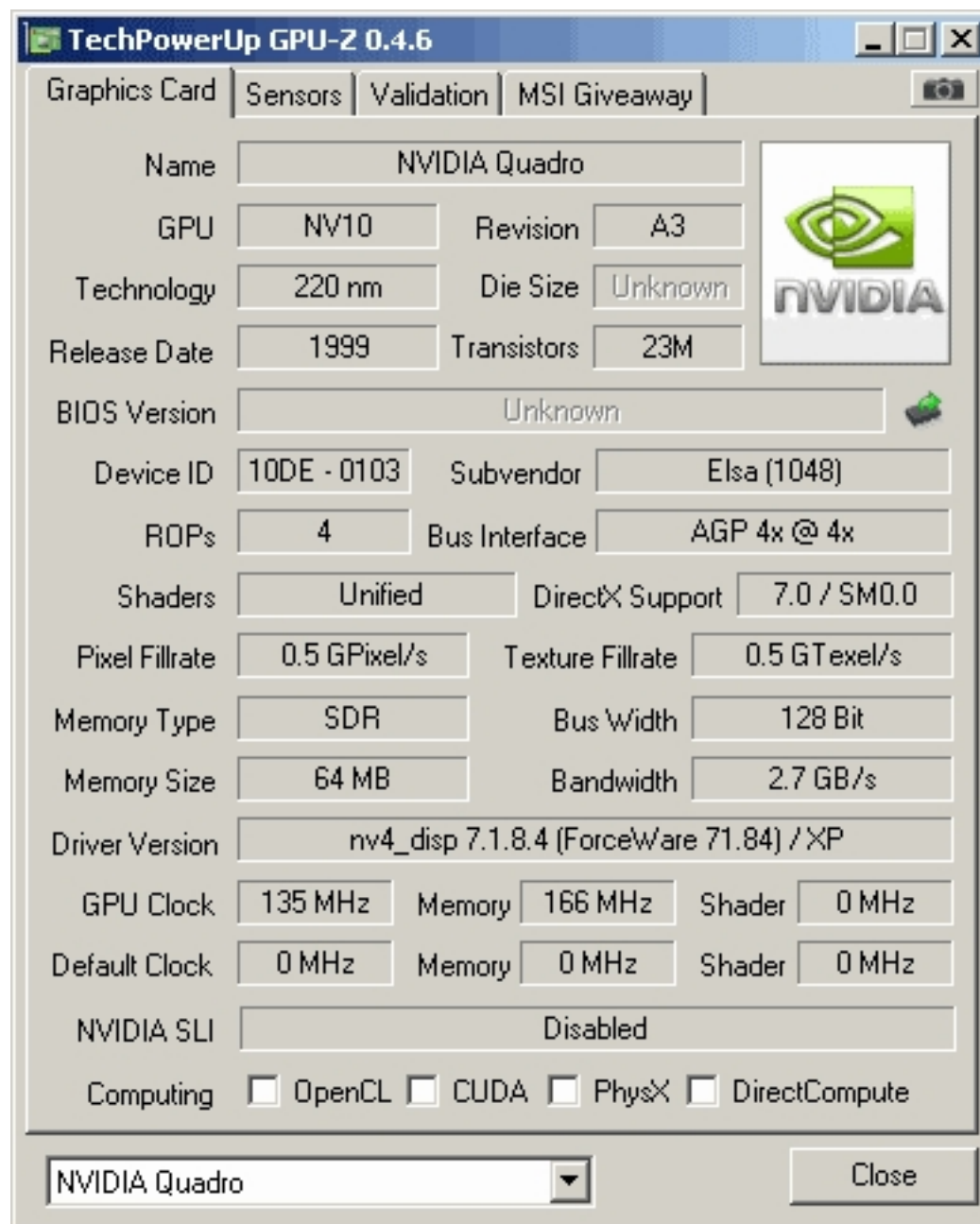
Sunday, 01 April 2012 12:36 - Last Updated Sunday, 05 May 2013 23:13



NVIDIA Quadro

Written by Vlask

Sunday, 01 April 2012 12:36 - Last Updated Sunday, 05 May 2013 23:13



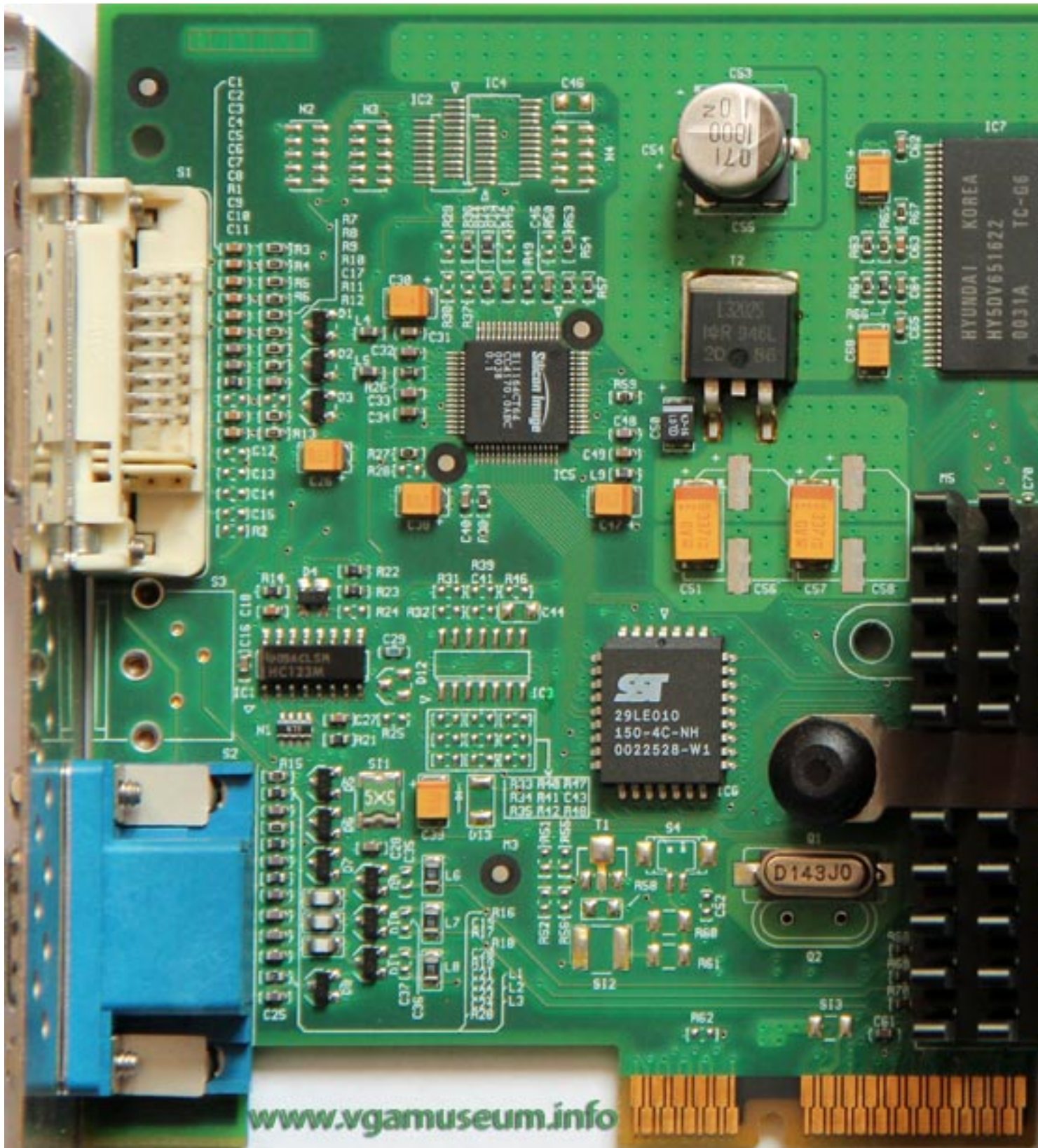
The screenshot displays the TechPowerUp GPU-Z 0.4.6 application window. The 'Graphics Card' tab is selected, showing detailed specifications for an NVIDIA Quadro. The interface includes a top navigation bar with tabs for 'Graphics Card', 'Sensors', 'Validation', and 'MSI Giveaway'. The main area is a grid of fields for various GPU parameters, with an NVIDIA logo on the right. At the bottom, there is a dropdown menu showing 'NVIDIA Quadro' and a 'Close' button.

Field	Value
Name	NVIDIA Quadro
GPU	NV10
Revision	A3
Technology	220 nm
Die Size	Unknown
Release Date	1999
Transistors	23M
BIOS Version	Unknown
Device ID	10DE - 0103
Subvendor	Elsa (1048)
ROPs	4
Bus Interface	AGP 4x @ 4x
Shaders	Unified
DirectX Support	7.0 / SM0.0
Pixel Fillrate	0.5 GPixel/s
Texture Fillrate	0.5 GTexel/s
Memory Type	SDR
Bus Width	128 Bit
Memory Size	64 MB
Bandwidth	2.7 GB/s
Driver Version	nv4_disp 7.1.8.4 (ForceWare 71.84) / XP
GPU Clock	135 MHz
Memory	166 MHz
Shader	0 MHz
Default Clock	0 MHz
Memory	0 MHz
Shader	0 MHz
NVIDIA SLI	Disabled
Computing	<input type="checkbox"/> OpenCL <input type="checkbox"/> CUDA <input type="checkbox"/> PhysX <input type="checkbox"/> DirectCompute

NVIDIA Quadro

Written by Vlask

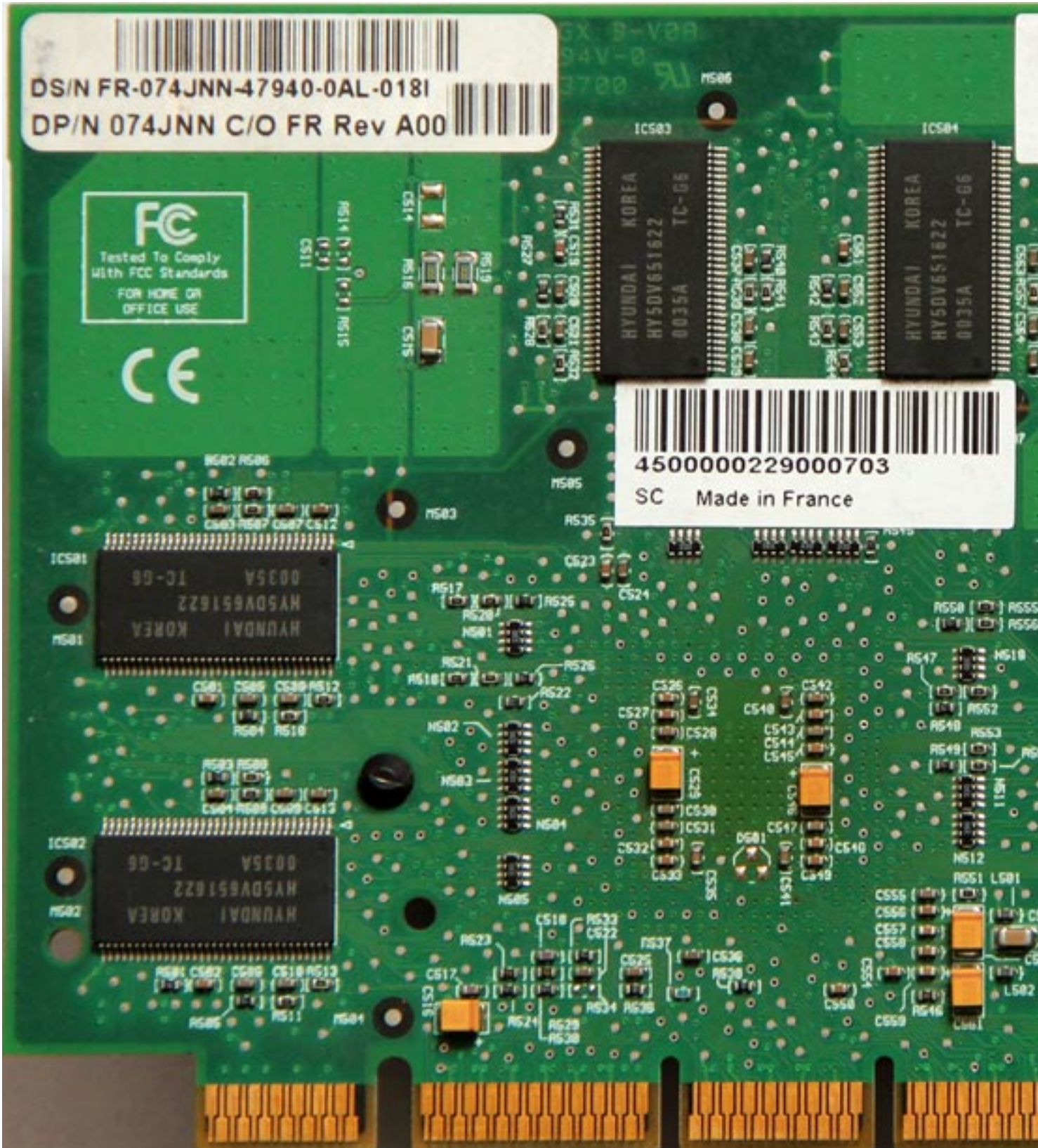
Sunday, 01 April 2012 12:36 - Last Updated Sunday, 05 May 2013 23:13



NVIDIA Quadro

Written by Vlask

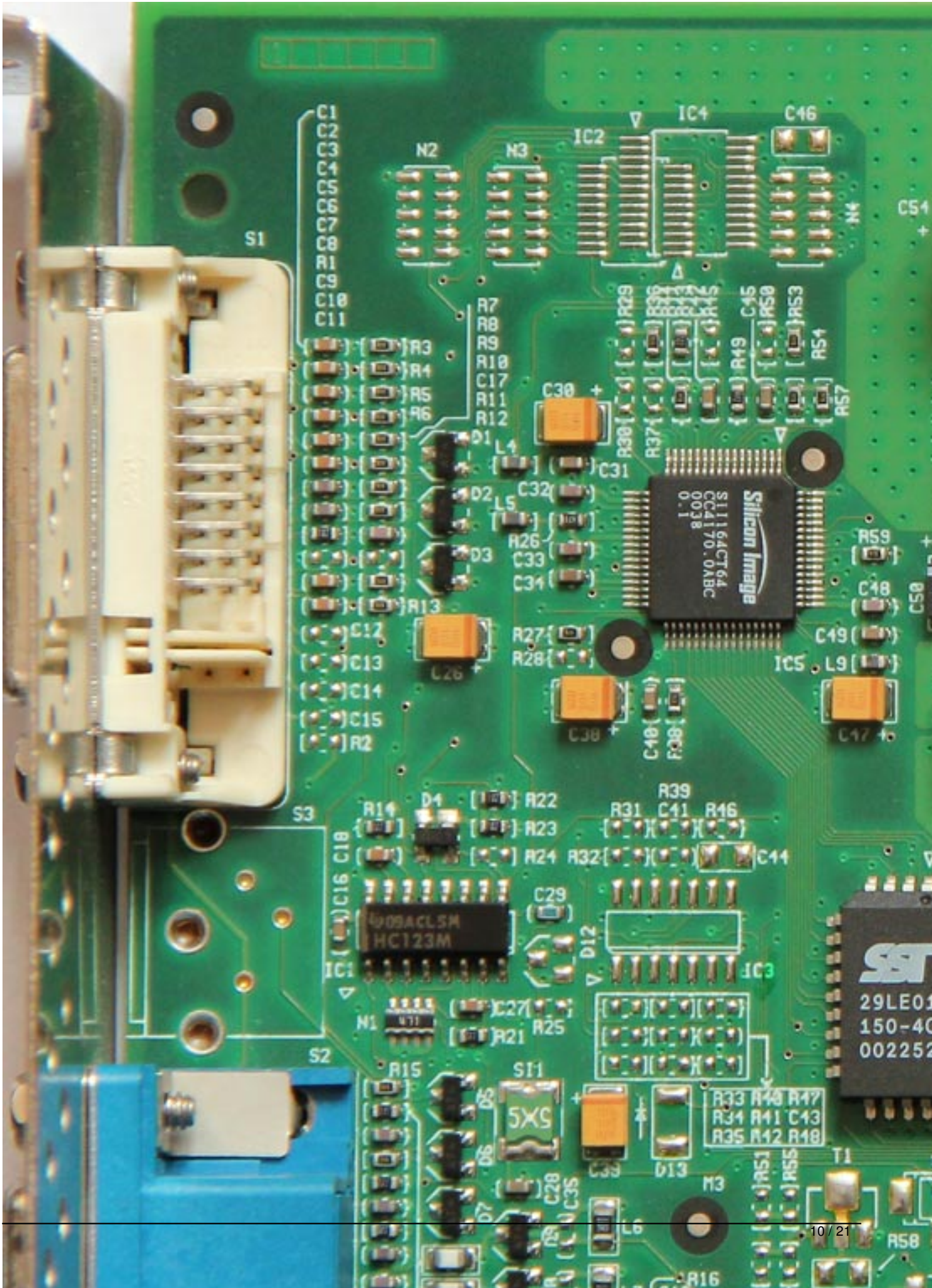
Sunday, 01 April 2012 12:36 - Last Updated Sunday, 05 May 2013 23:13



NVIDIA Quadro

Written by Vlask

Sunday, 01 April 2012 12:36 - Last Updated Sunday, 05 May 2013 23:13



NVIDIA Quadro

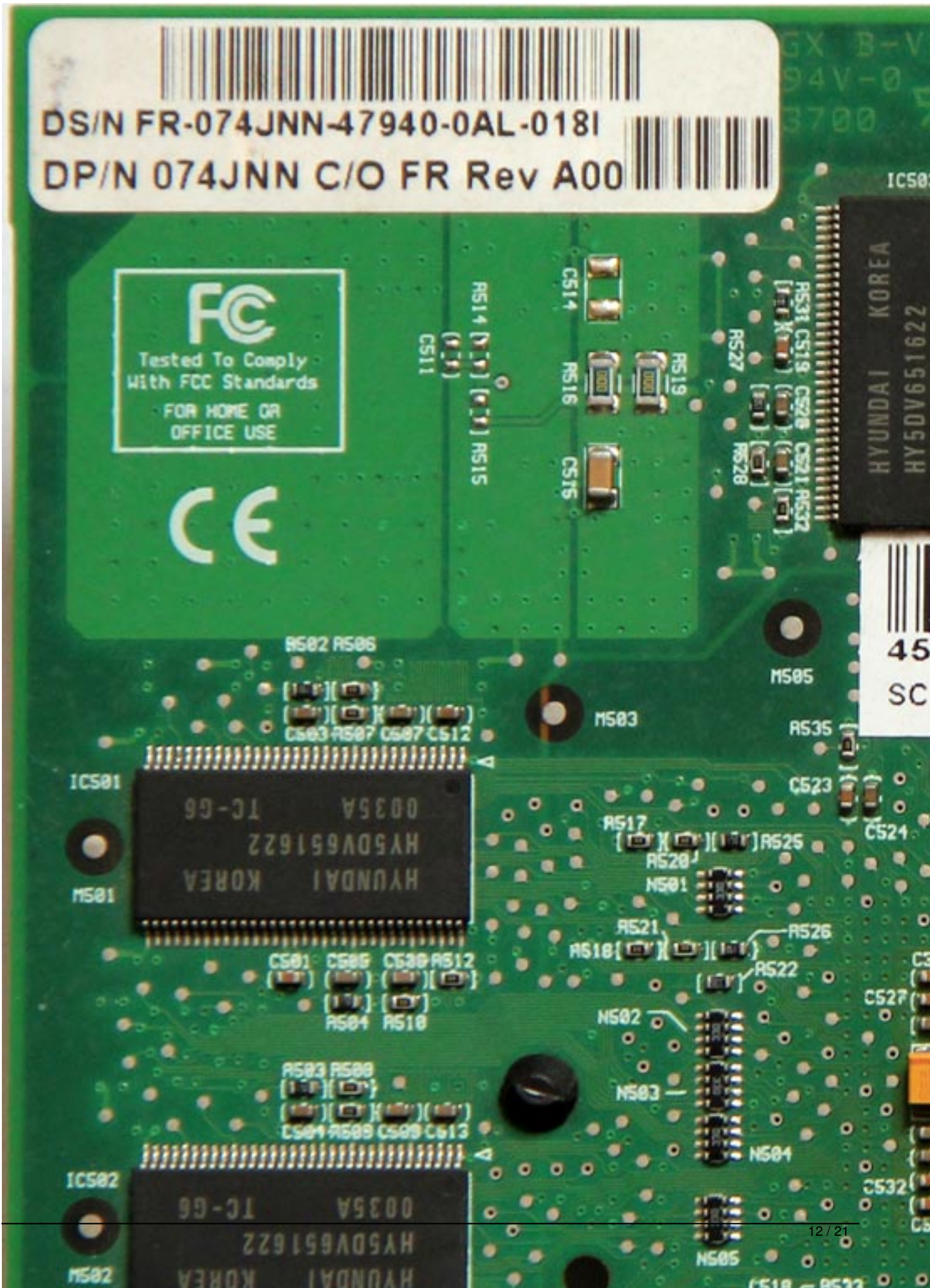
Written by Vlask

Sunday, 01 April 2012 12:36 - Last Updated Sunday, 05 May 2013 23:13

NVIDIA Quadro

Written by Vlask

Sunday, 01 April 2012 12:36 - Last Updated Sunday, 05 May 2013 23:13



NVIDIA Quadro

Written by Vlask

Sunday, 01 April 2012 12:36 - Last Updated Sunday, 05 May 2013 23:13

The screenshot displays the TechPowerUp GPU-Z 0.4.6 application window. The interface is organized into several sections:

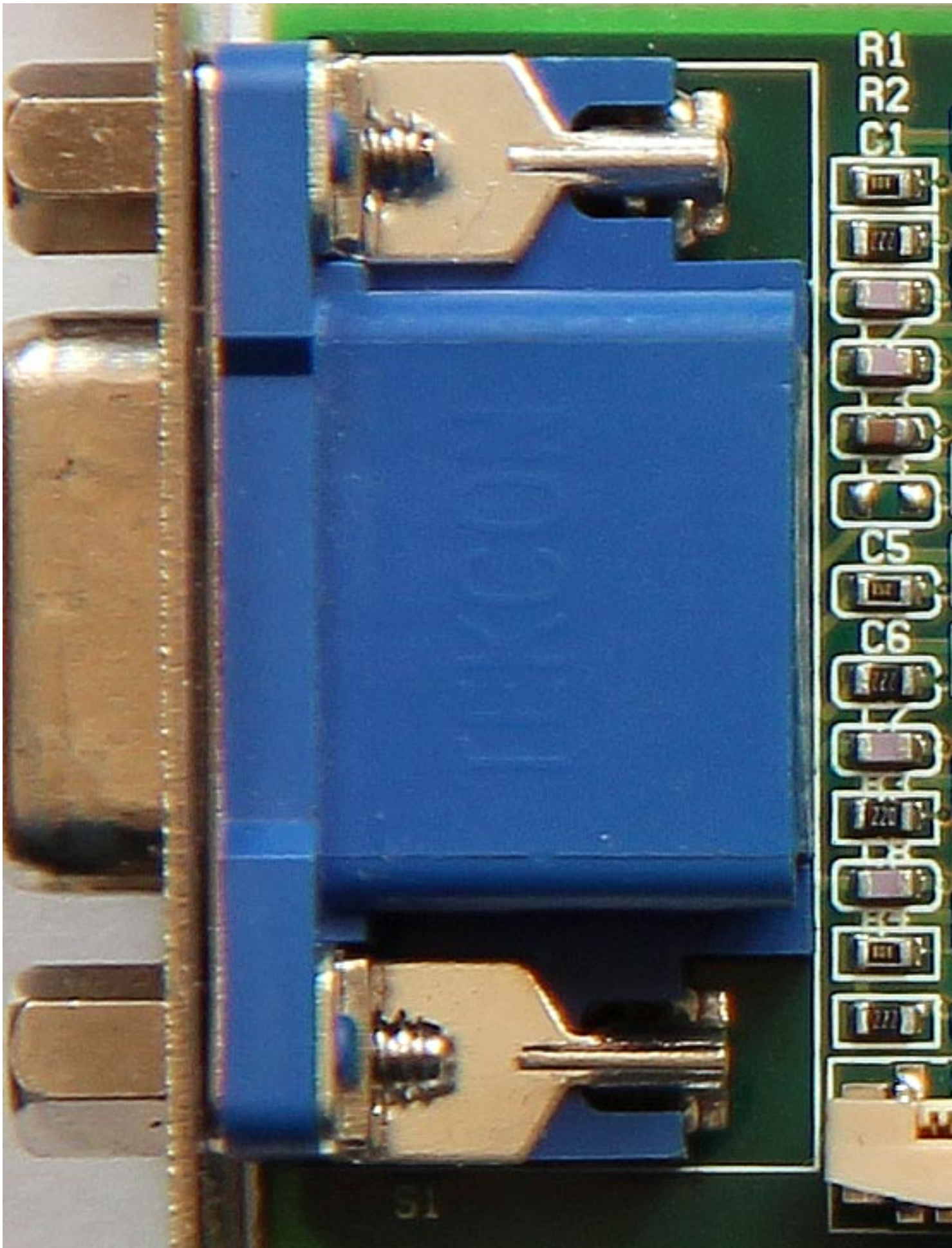
- Graphics Card:** Name: NVIDIA Quadro
- GPU:** GPU: NV10, Revision: A3
- Technology:** Technology: 220 nm, Die Size: Unknown
- Release Date:** Release Date: 1999, Transistors: 23M
- BIOS Version:** BIOS Version: Unknown
- Device ID:** Device ID: 10DE - 0103, Subvendor: Elsa (1048)
- ROPs:** ROPs: 4, Bus Interface: AGP 4x @ 4x
- Shaders:** Shaders: Unified, DirectX Support: 7.0 / SM0.0
- Pixel Fillrate:** Pixel Fillrate: 0.5 GPixel/s, Texture Fillrate: 0.5 GTexel/s
- Memory Type:** Memory Type: DDR, Bus Width: 128 Bit
- Memory Size:** Memory Size: 64 MB, Bandwidth: 5.3 GB/s
- Driver Version:** Driver Version: nv4_disp 7.1.8.4 (ForceWare 71.84) / XP
- Clocks:** GPU Clock: 135 MHz, Memory: 166 MHz, Shader: 0 MHz; Default Clock: GPU: 0 MHz, Memory: 0 MHz, Shader: 0 MHz
- NVIDIA SLI:** NVIDIA SLI: Disabled
- Computing:** Computing: OpenCL CUDA PhysX DirectCompute

At the bottom, there is a dropdown menu showing "NVIDIA Quadro" and a "Close" button.

NVIDIA Quadro

Written by Vlask

Sunday, 01 April 2012 12:36 - Last Updated Sunday, 05 May 2013 23:13



NVIDIA Quadro

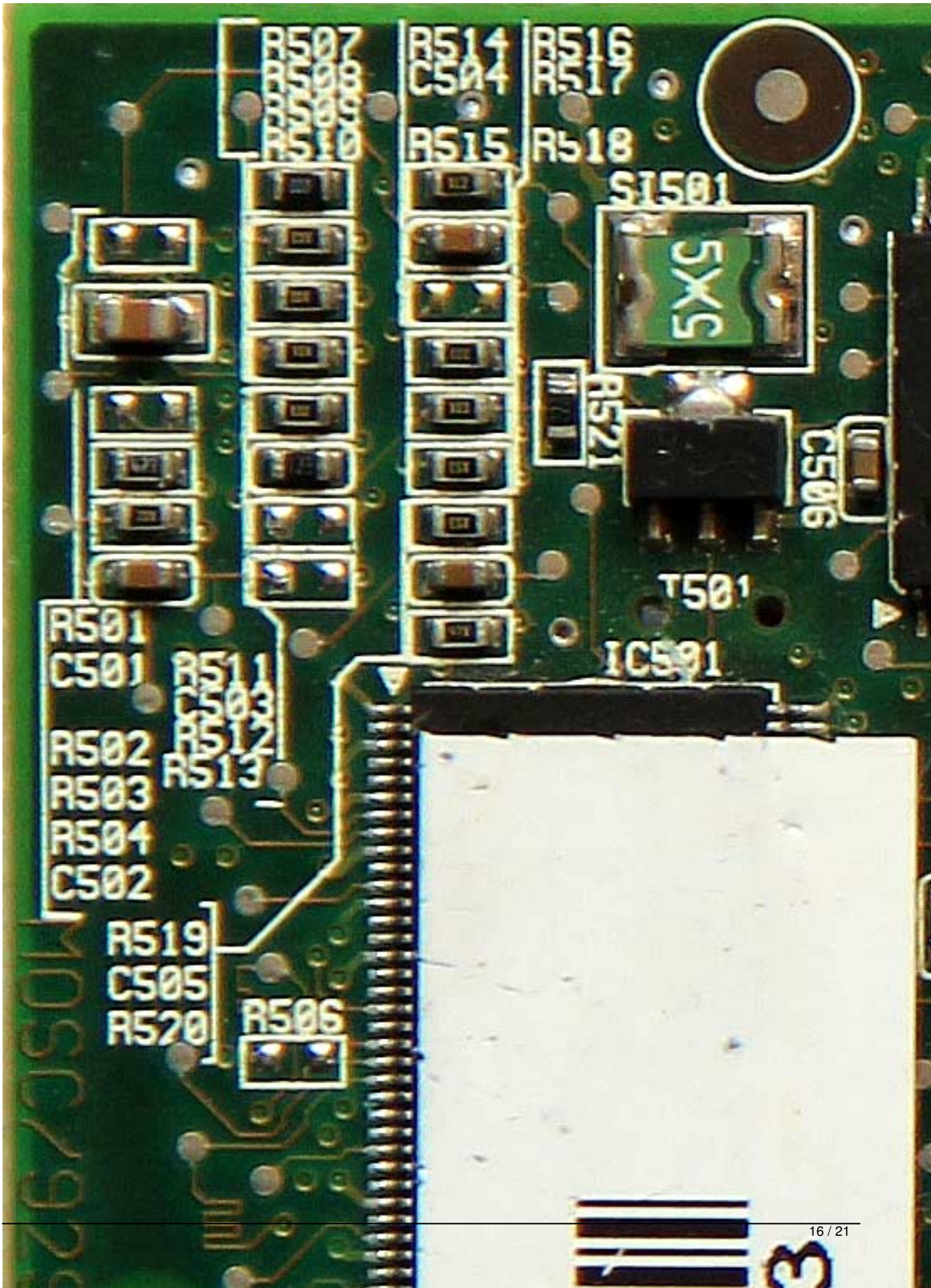
Written by Vlask

Sunday, 01 April 2012 12:36 - Last Updated Sunday, 05 May 2013 23:13

NVIDIA Quadro

Written by Vlask

Sunday, 01 April 2012 12:36 - Last Updated Sunday, 05 May 2013 23:13



NVIDIA Quadro

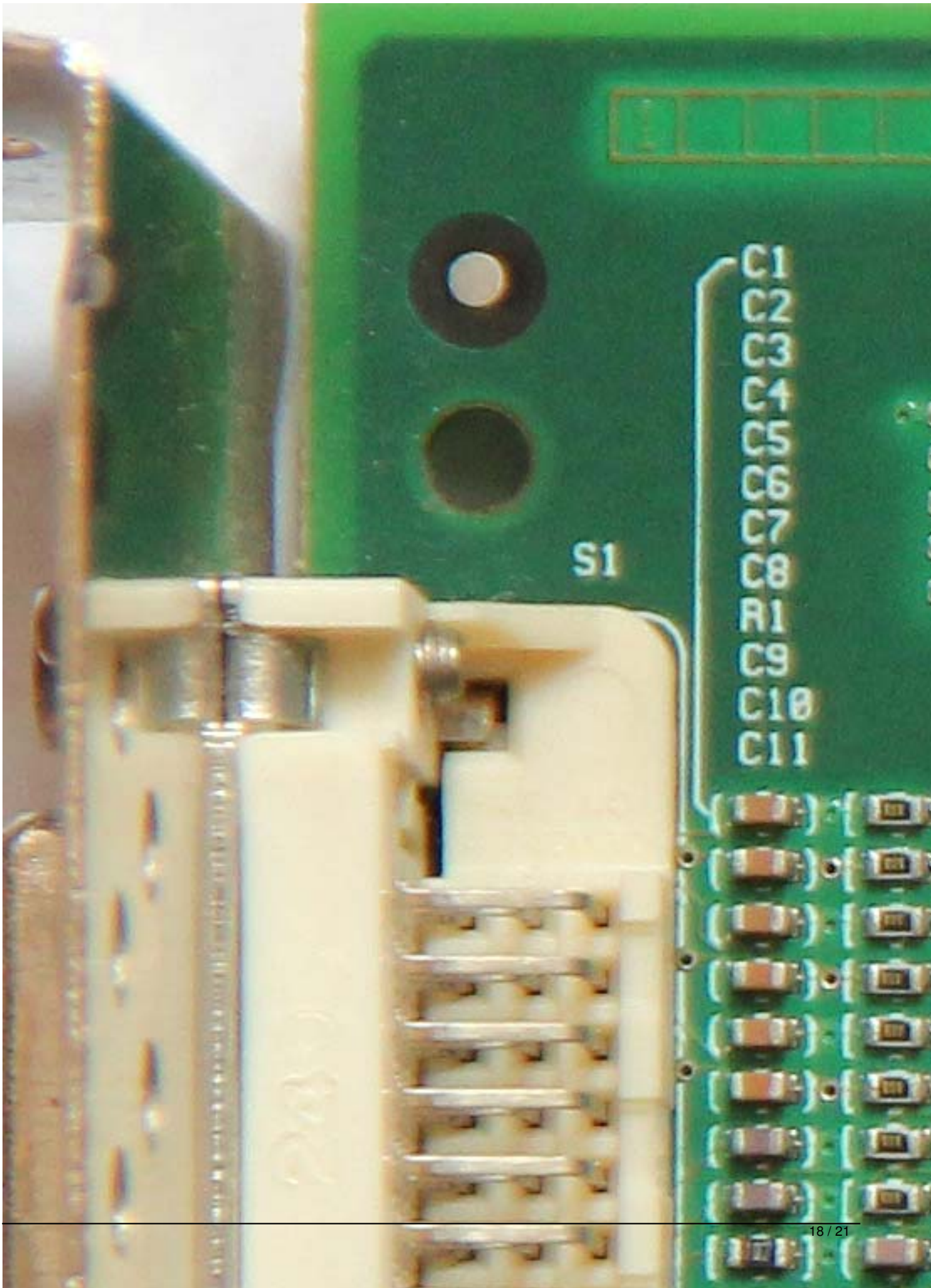
Written by Vlask

Sunday, 01 April 2012 12:36 - Last Updated Sunday, 05 May 2013 23:13

NVIDIA Quadro

Written by Vlask

Sunday, 01 April 2012 12:36 - Last Updated Sunday, 05 May 2013 23:13



NVIDIA Quadro

Written by Vlask

Sunday, 01 April 2012 12:36 - Last Updated Sunday, 05 May 2013 23:13



DS/N FR-074JNN-479

DP/N 074JNN C/O



Tested To Comply
With FCC Standards

FOR HOME OR
OFFICE USE



NVIDIA Quadro

Written by Vlask

Sunday, 01 April 2012 12:36 - Last Updated Sunday, 05 May 2013 23:13

{/webgallery}