

## NVIDIA QuadroFX 1300

Written by Vlask

Sunday, 31 March 2013 15:50 - Last Updated Sunday, 05 May 2013 22:54

---



**Core:** NV35GL (NV38?) 351MHz 256bit

**Memory:** 128MB DDR 552MHz 256bit

**Year:** 2004 **Bus:** PCI-E 16x

**Made:** TSMC 130nm **Links:** [Tom'shw](#) [Wikipedia](#) [Opengl](#) [HP](#) **Price:**\$899

**Bios:** [Nvidia](#)

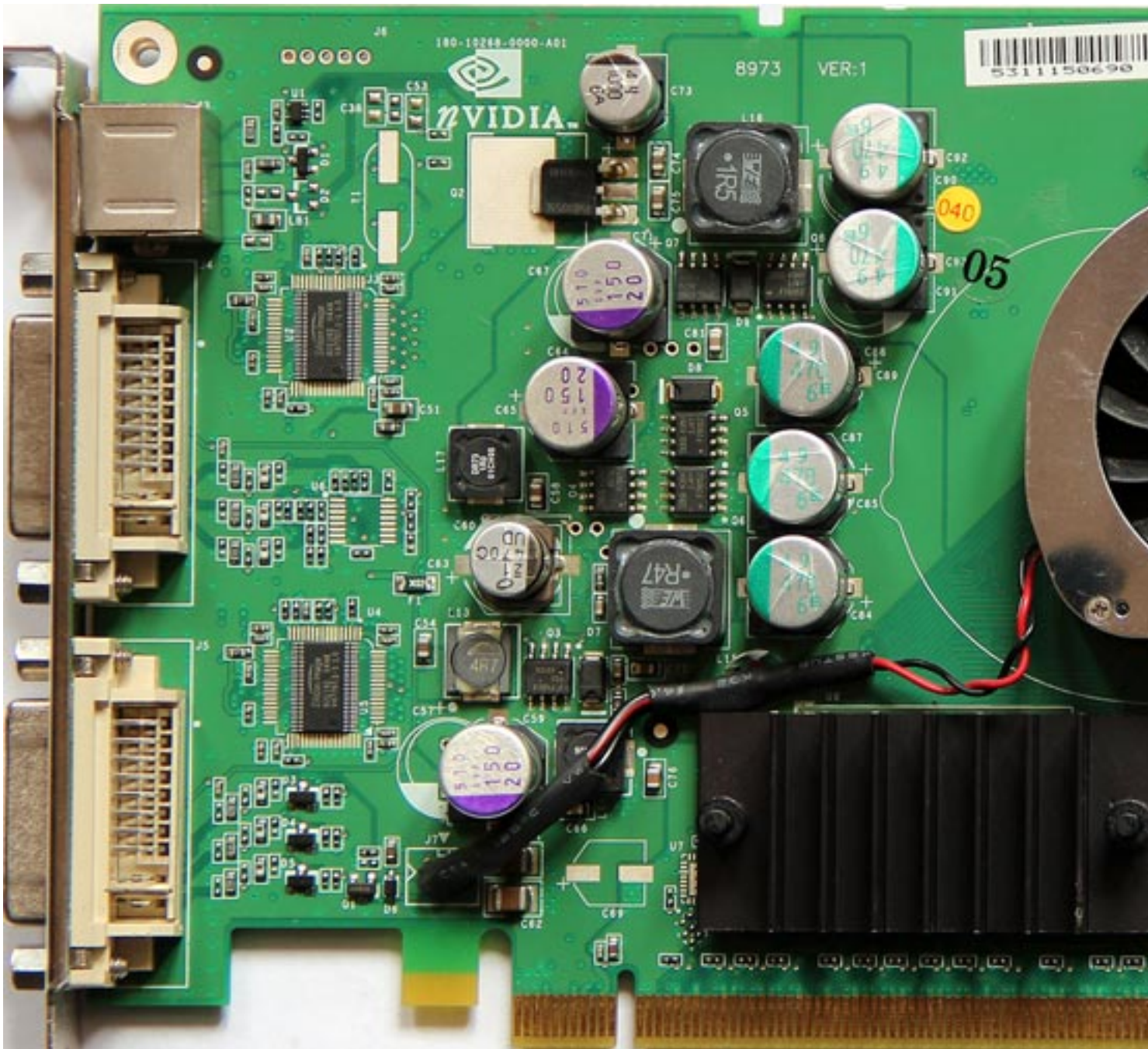
**Note:** not sure about main chip. Bios and aida detects it as NV35, GPUZ and HP tells that it should be NV38. Cant remove heatsink without destroying card (glued). Card is modified GeForce FX 5900/5950.

{webgallery}

# NVIDIA QuadroFX 1300

Written by Vlask

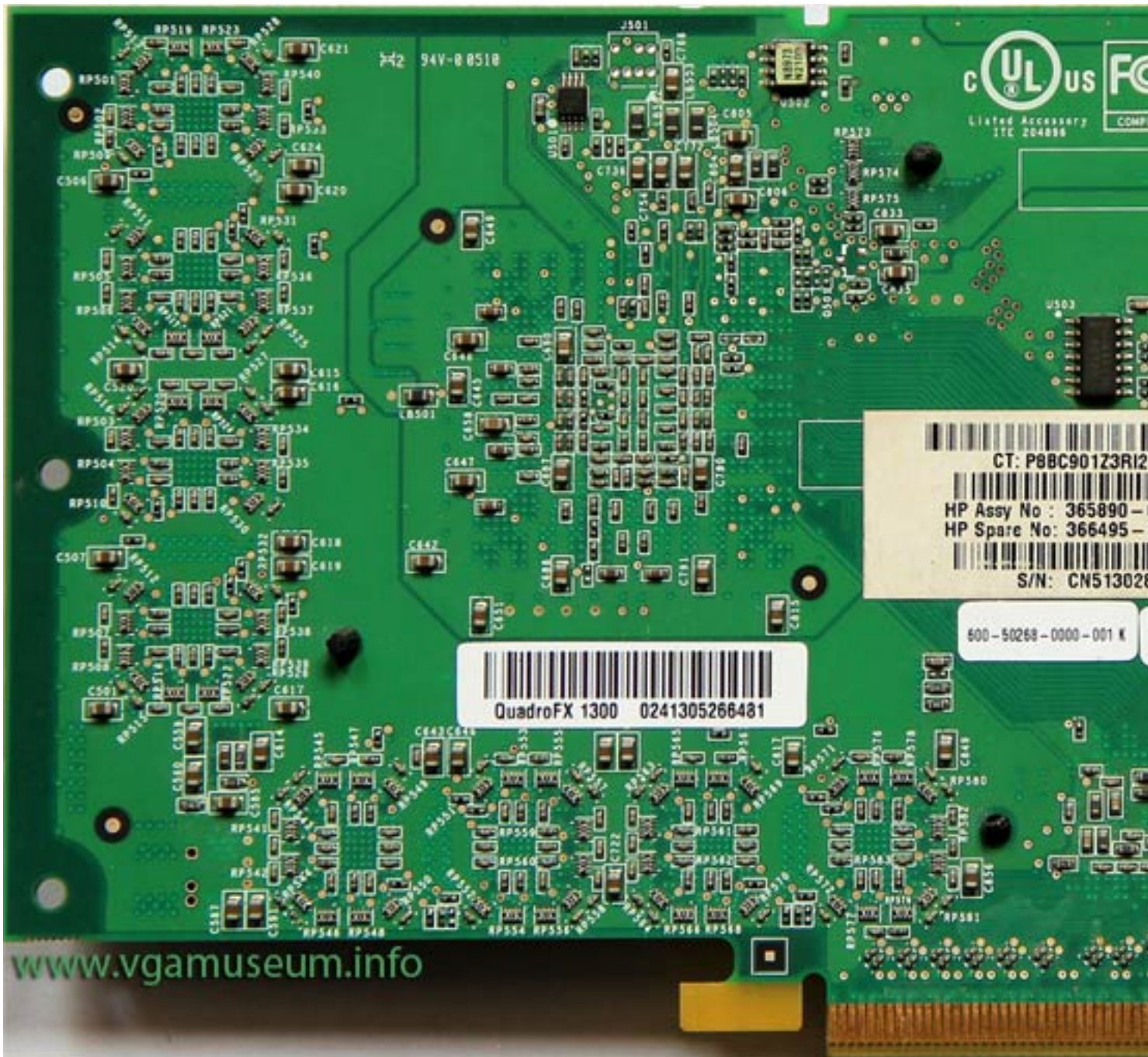
Sunday, 31 March 2013 15:50 - Last Updated Sunday, 05 May 2013 22:54



# NVIDIA QuadroFX 1300

Written by Vlask

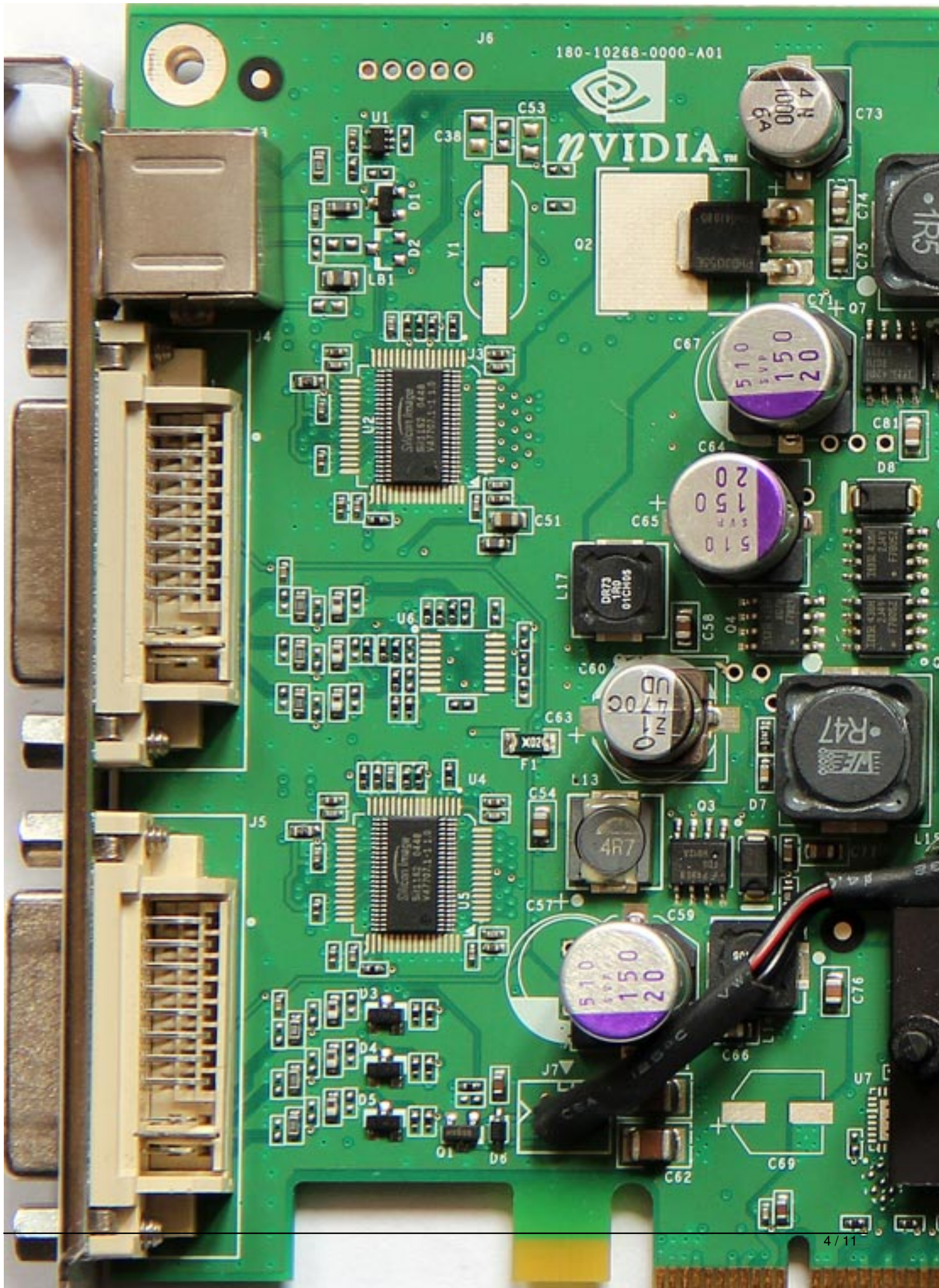
Sunday, 31 March 2013 15:50 - Last Updated Sunday, 05 May 2013 22:54



# NVIDIA QuadroFX 1300

Written by Vlask

Sunday, 31 March 2013 15:50 - Last Updated Sunday, 05 May 2013 22:54



# NVIDIA QuadroFX 1300

Written by Vlask

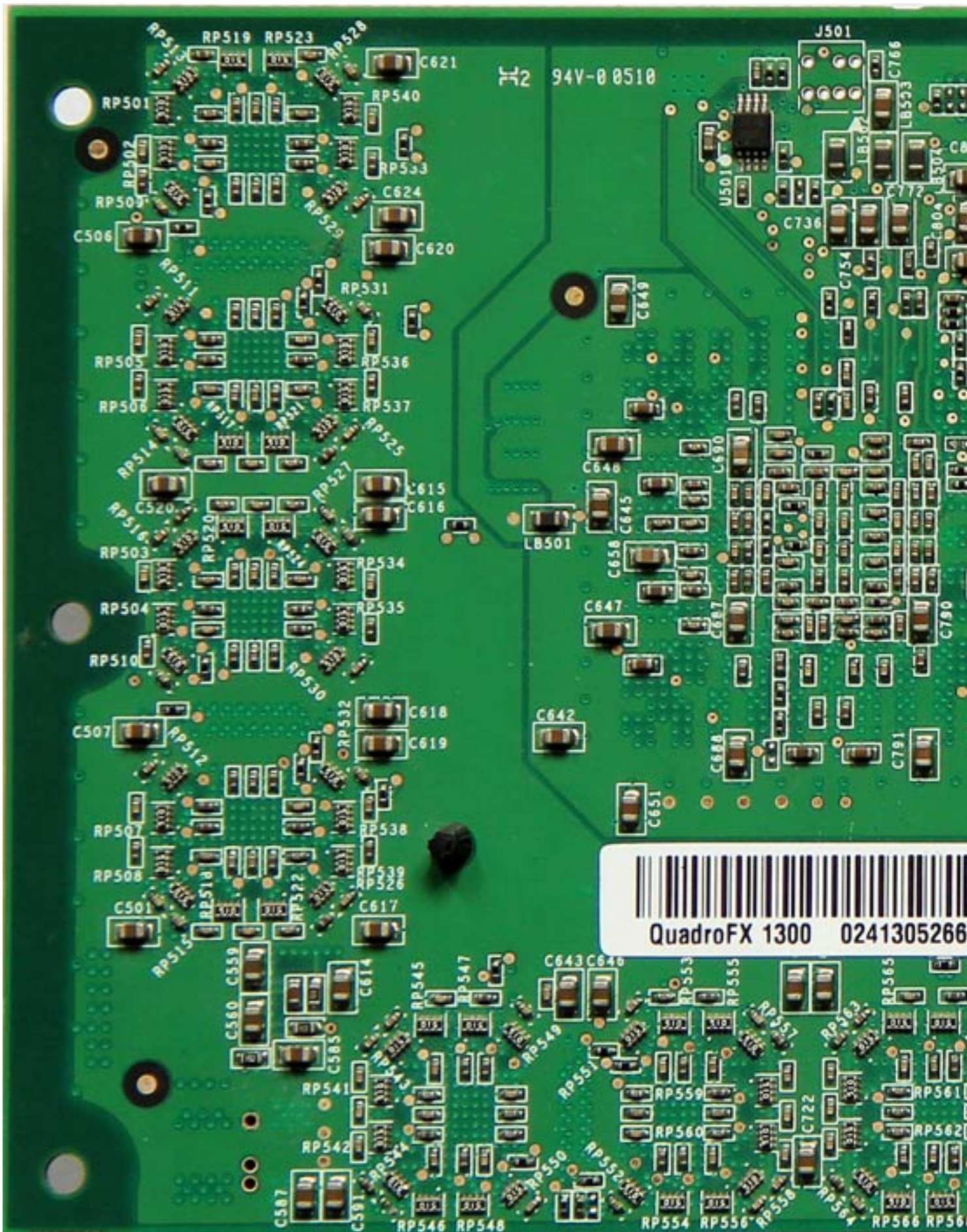
Sunday, 31 March 2013 15:50 - Last Updated Sunday, 05 May 2013 22:54

---

# NVIDIA QuadroFX 1300

Written by Vlask

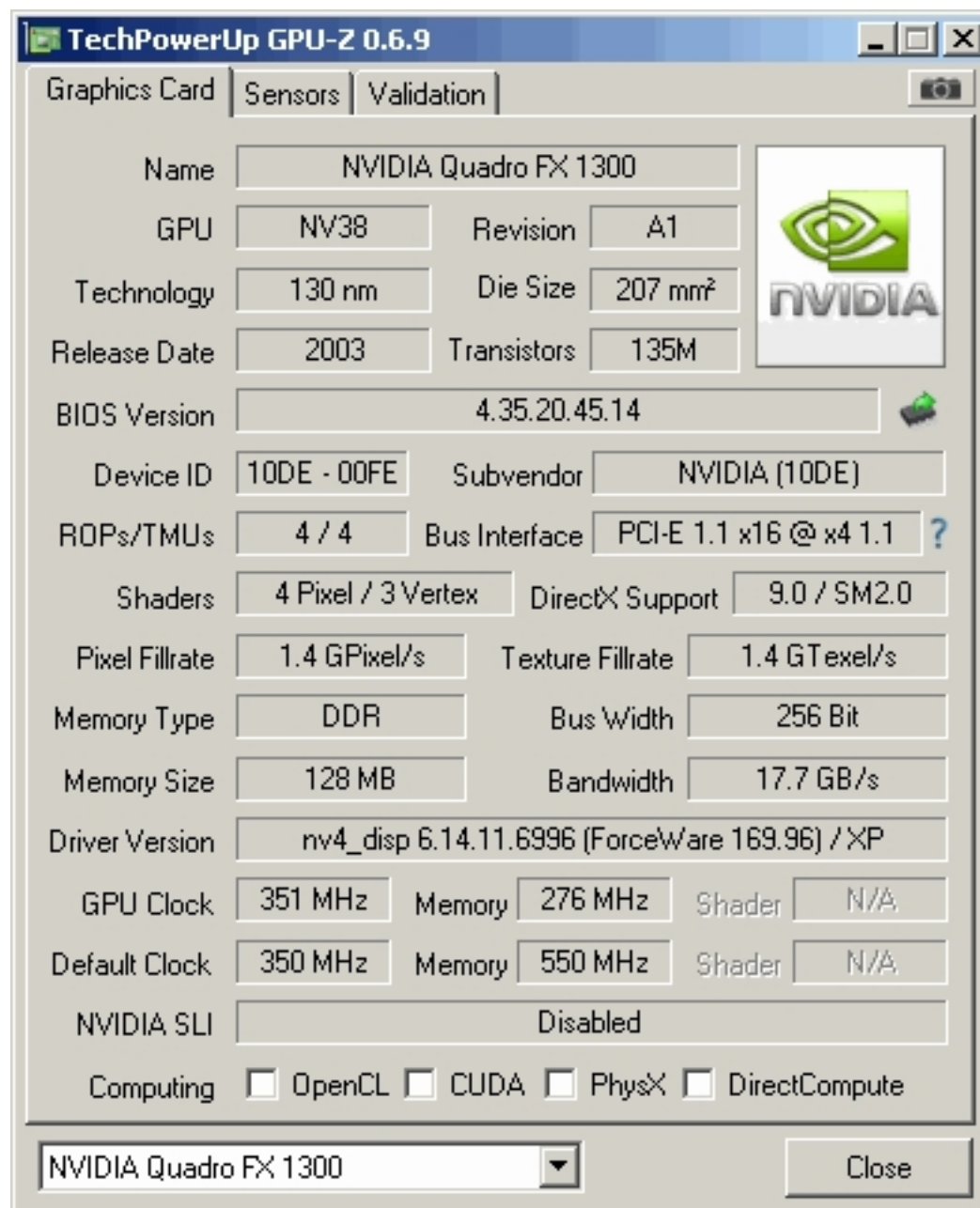
Sunday, 31 March 2013 15:50 - Last Updated Sunday, 05 May 2013 22:54



## NVIDIA QuadroFX 1300

Written by Vlask

Sunday, 31 March 2013 15:50 - Last Updated Sunday, 05 May 2013 22:54



The screenshot displays the TechPowerUp GPU-Z 0.6.9 application window. The 'Graphics Card' tab is selected, showing detailed specifications for the NVIDIA Quadro FX 1300. The interface includes a top navigation bar with 'Graphics Card', 'Sensors', and 'Validation' tabs. The main area is a grid of fields for various GPU parameters, with the NVIDIA logo on the right. At the bottom, there is a dropdown menu showing the selected card and a 'Close' button.

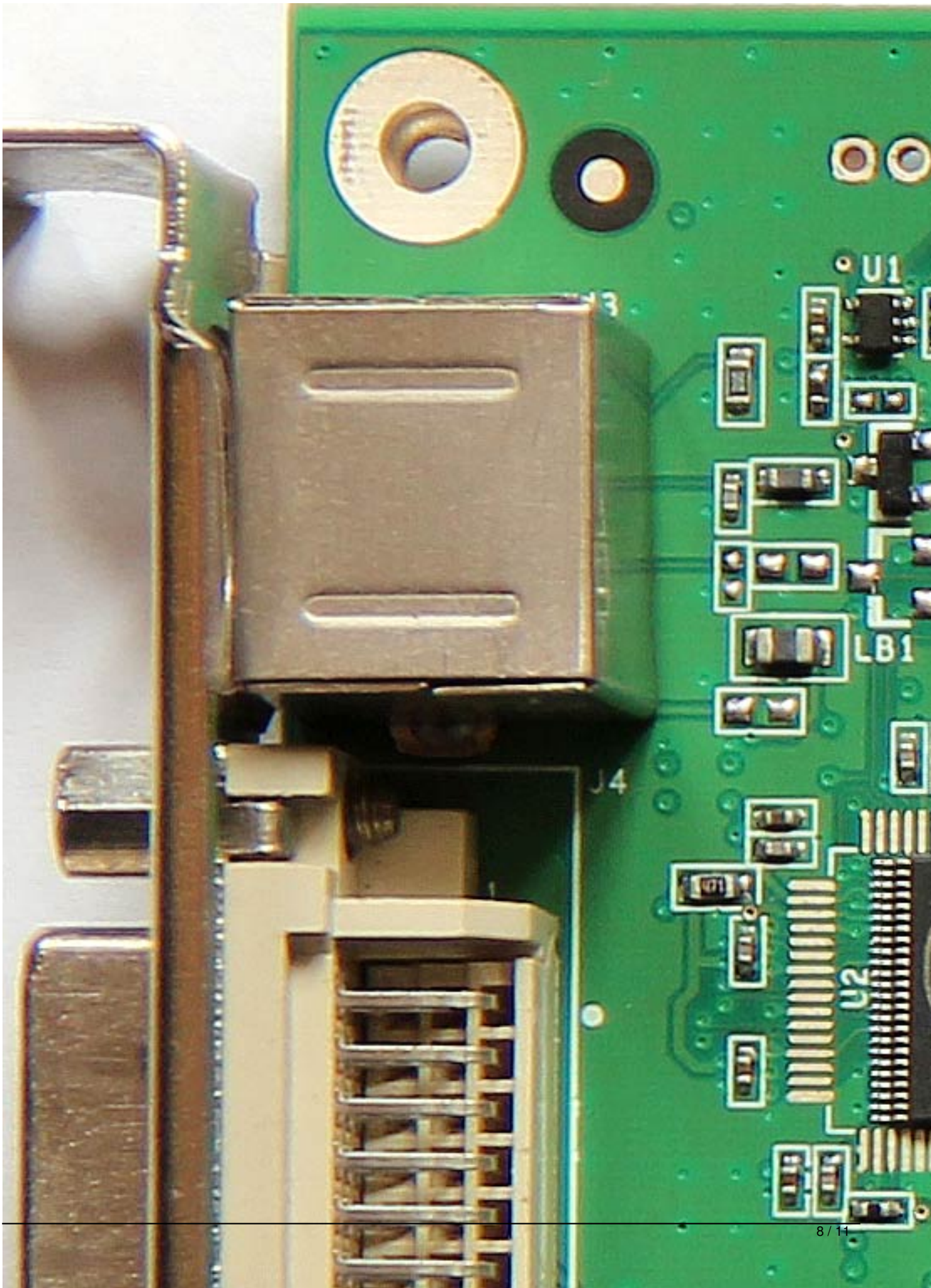
Field	Value
Name	NVIDIA Quadro FX 1300
GPU	NV38
Revision	A1
Technology	130 nm
Die Size	207 mm <sup>2</sup>
Release Date	2003
Transistors	135M
BIOS Version	4.35.20.45.14
Device ID	10DE - 00FE
Subvendor	NVIDIA (10DE)
ROPs/TMUs	4 / 4
Bus Interface	PCI-E 1.1 x16 @ x4 1.1
Shaders	4 Pixel / 3 Vertex
DirectX Support	9.0 / SM2.0
Pixel Fillrate	1.4 GPixel/s
Texture Fillrate	1.4 GTexel/s
Memory Type	DDR
Bus Width	256 Bit
Memory Size	128 MB
Bandwidth	17.7 GB/s
Driver Version	nv4_disp 6.14.11.6996 (ForceWare 169.96) / XP
GPU Clock	351 MHz
Memory	276 MHz
Shader	N/A
Default Clock	350 MHz
Memory	550 MHz
Shader	N/A
NVIDIA SLI	Disabled
Computing	<input type="checkbox"/> OpenCL <input type="checkbox"/> CUDA <input type="checkbox"/> PhysX <input type="checkbox"/> DirectCompute

# NVIDIA QuadroFX 1300

Written by Vlask

Sunday, 31 March 2013 15:50 - Last Updated Sunday, 05 May 2013 22:54

---





# NVIDIA QuadroFX 1300

Written by Vlask

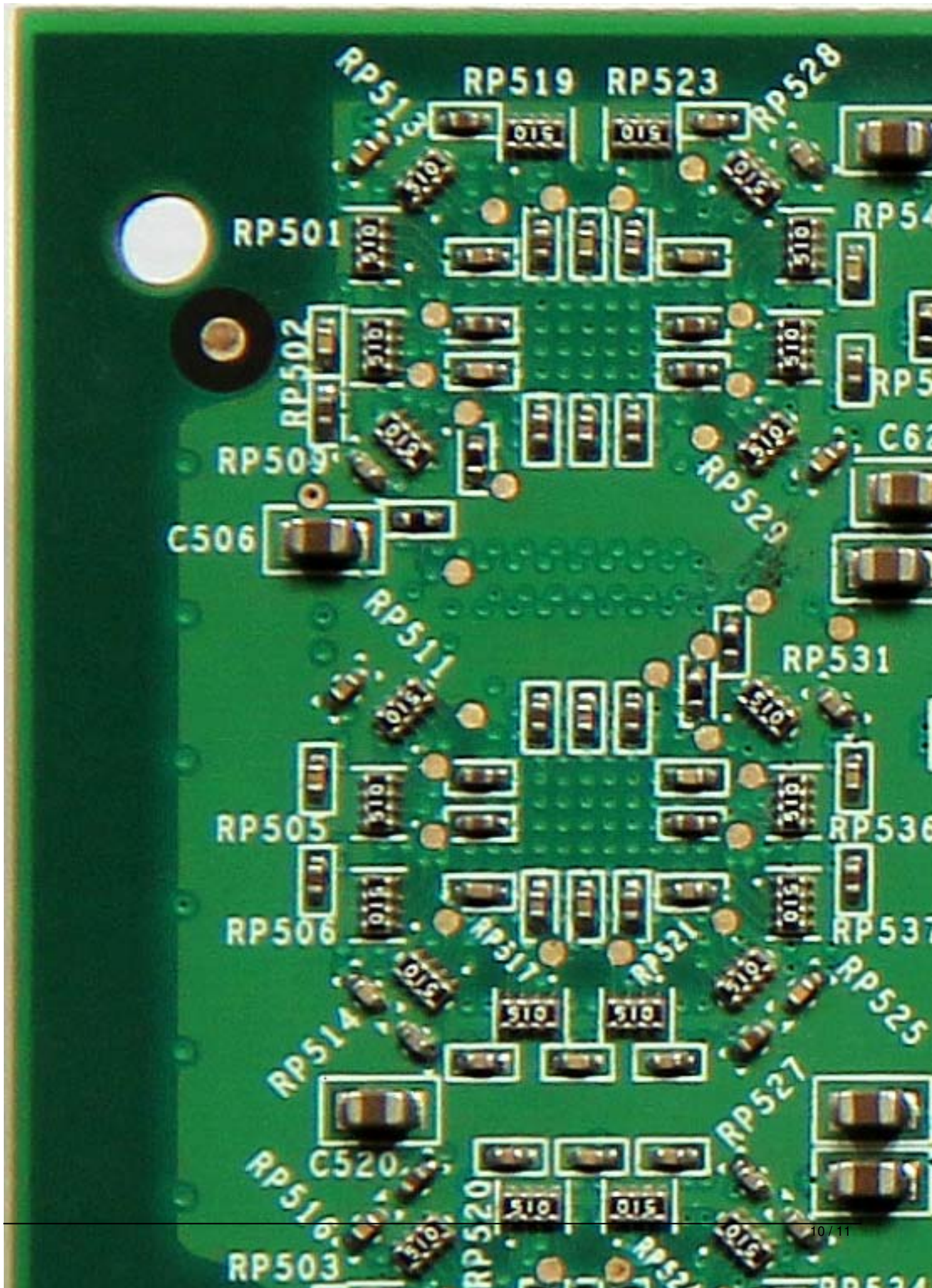
Sunday, 31 March 2013 15:50 - Last Updated Sunday, 05 May 2013 22:54

---

# NVIDIA QuadroFX 1300

Written by Vlask

Sunday, 31 March 2013 15:50 - Last Updated Sunday, 05 May 2013 22:54



## NVIDIA QuadroFX 1300

Written by Vlask

Sunday, 31 March 2013 15:50 - Last Updated Sunday, 05 May 2013 22:54

---

{/webgallery}