

NVIDIA Riva TNT2 M64 Vanta

Written by Vlask

Wednesday, 14 October 2009 20:10 - Last Updated Sunday, 05 May 2013 23:18



Core: NV5 100MHz 128bit

Memory: 16MB SDR 110MHz 64bit

Year: 1999 **Bus:** AGP 4x

Made: TSMC 250nm Taiwan **Links:** none known

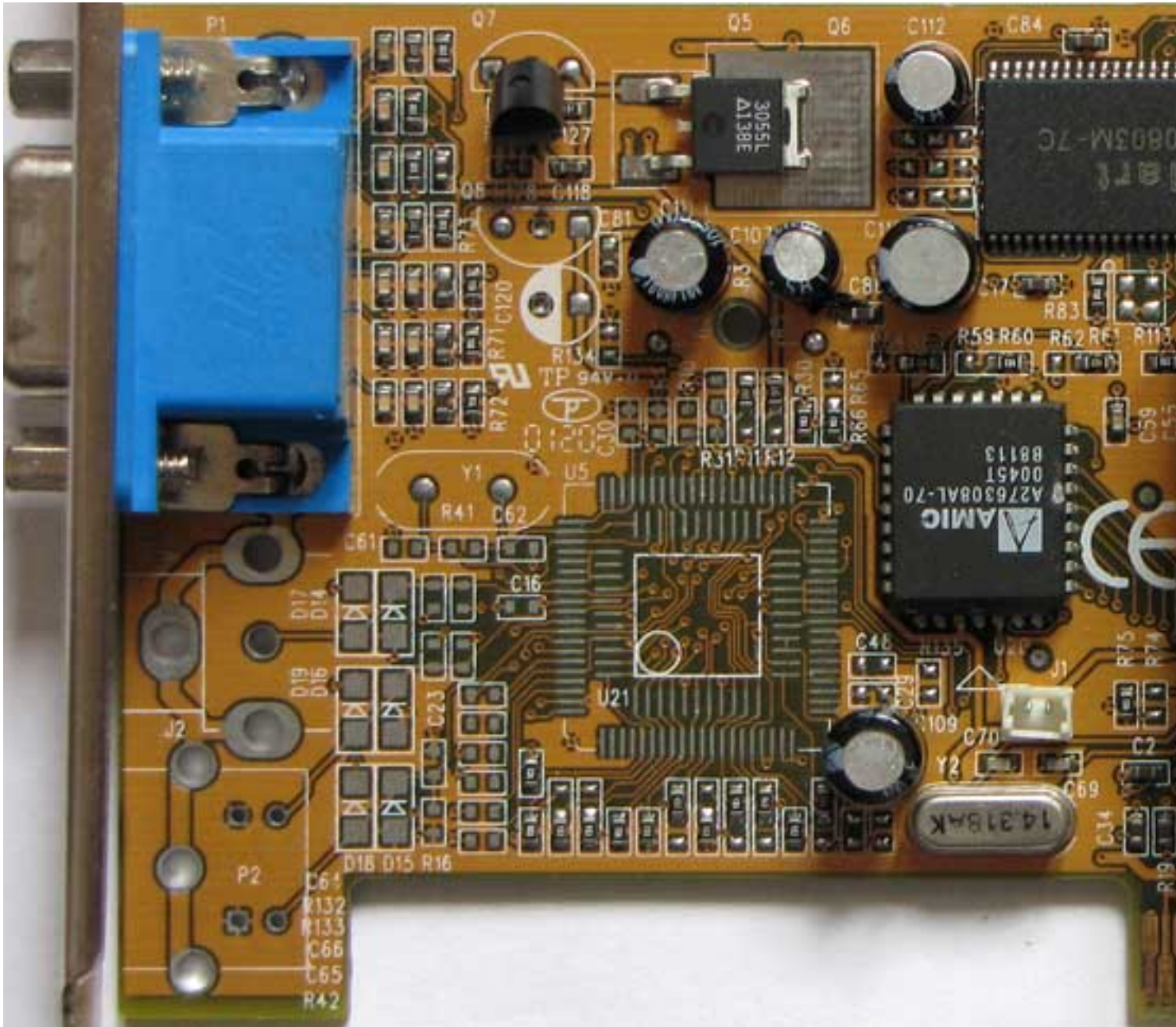
Bios: [Inno3D](#)

{webgallery}

NVIDIA Riva TNT2 M64 Vanta

Written by Vlask

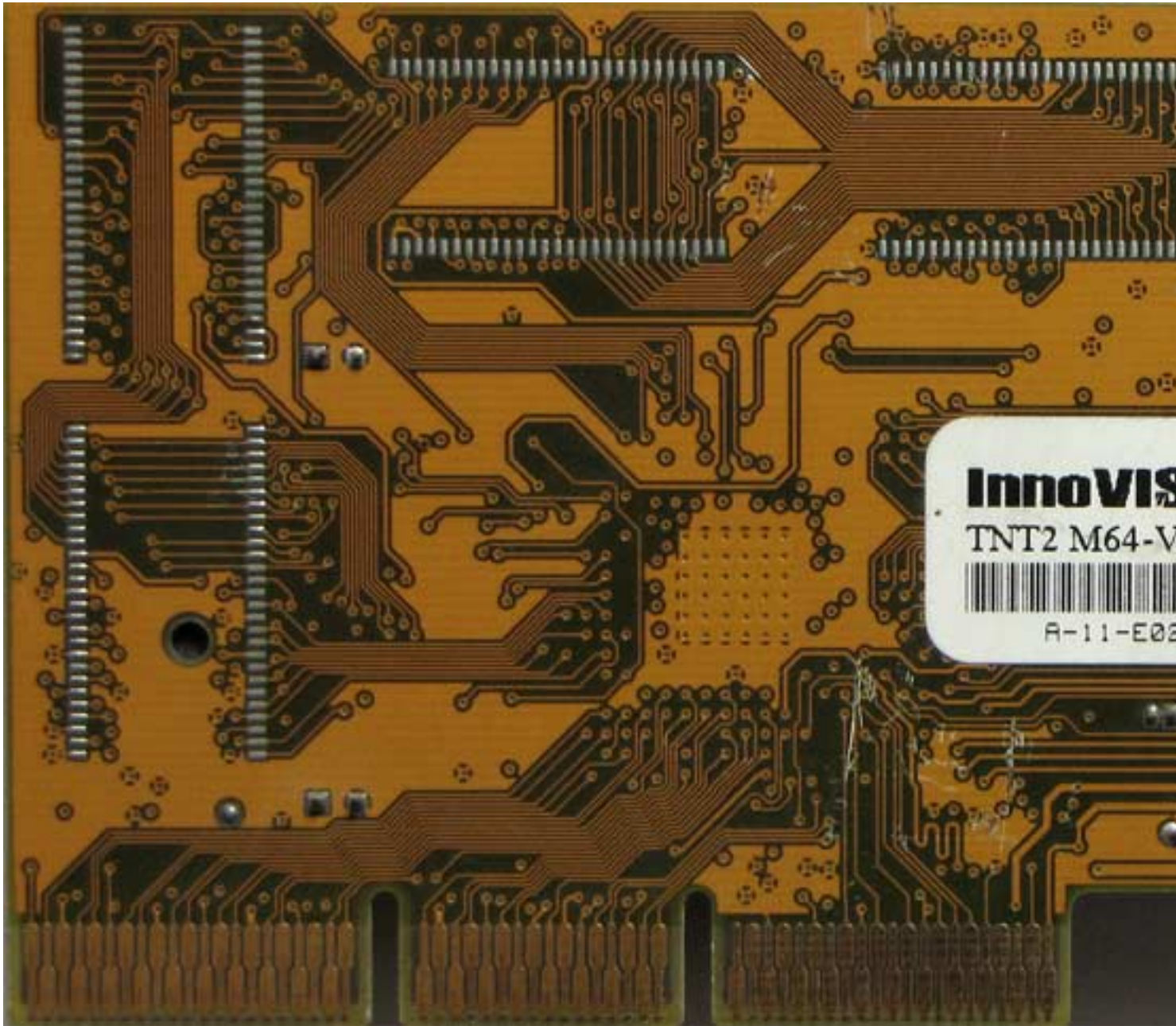
Wednesday, 14 October 2009 20:10 - Last Updated Sunday, 05 May 2013 23:18



NVIDIA Riva TNT2 M64 Vanta

Written by Vlask

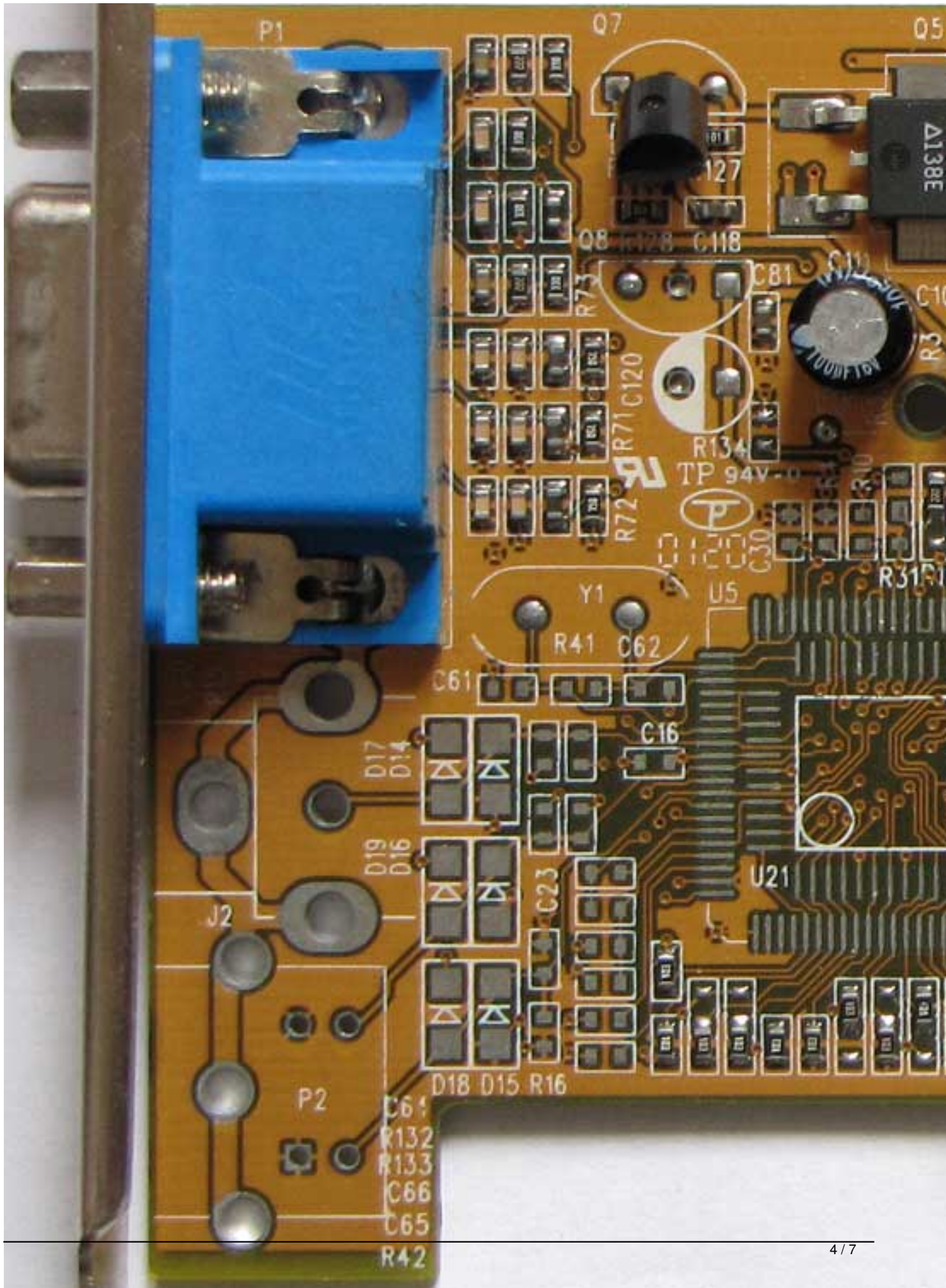
Wednesday, 14 October 2009 20:10 - Last Updated Sunday, 05 May 2013 23:18



NVIDIA Riva TNT2 M64 Vanta

Written by Vlask

Wednesday, 14 October 2009 20:10 - Last Updated Sunday, 05 May 2013 23:18



NVIDIA Riva TNT2 M64 Vanta

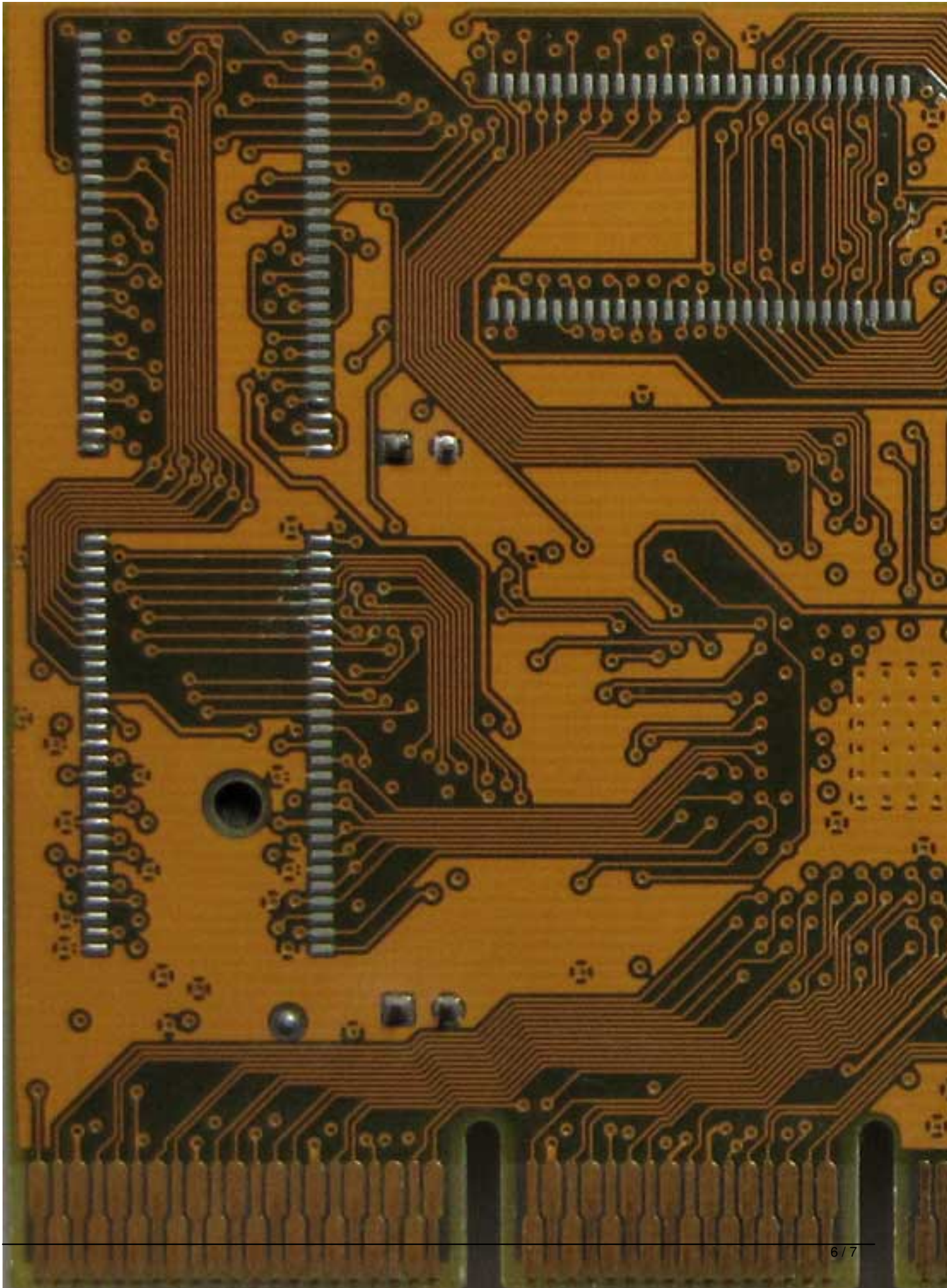
Written by Vlask

Wednesday, 14 October 2009 20:10 - Last Updated Sunday, 05 May 2013 23:18

NVIDIA Riva TNT2 M64 Vanta

Written by Vlask

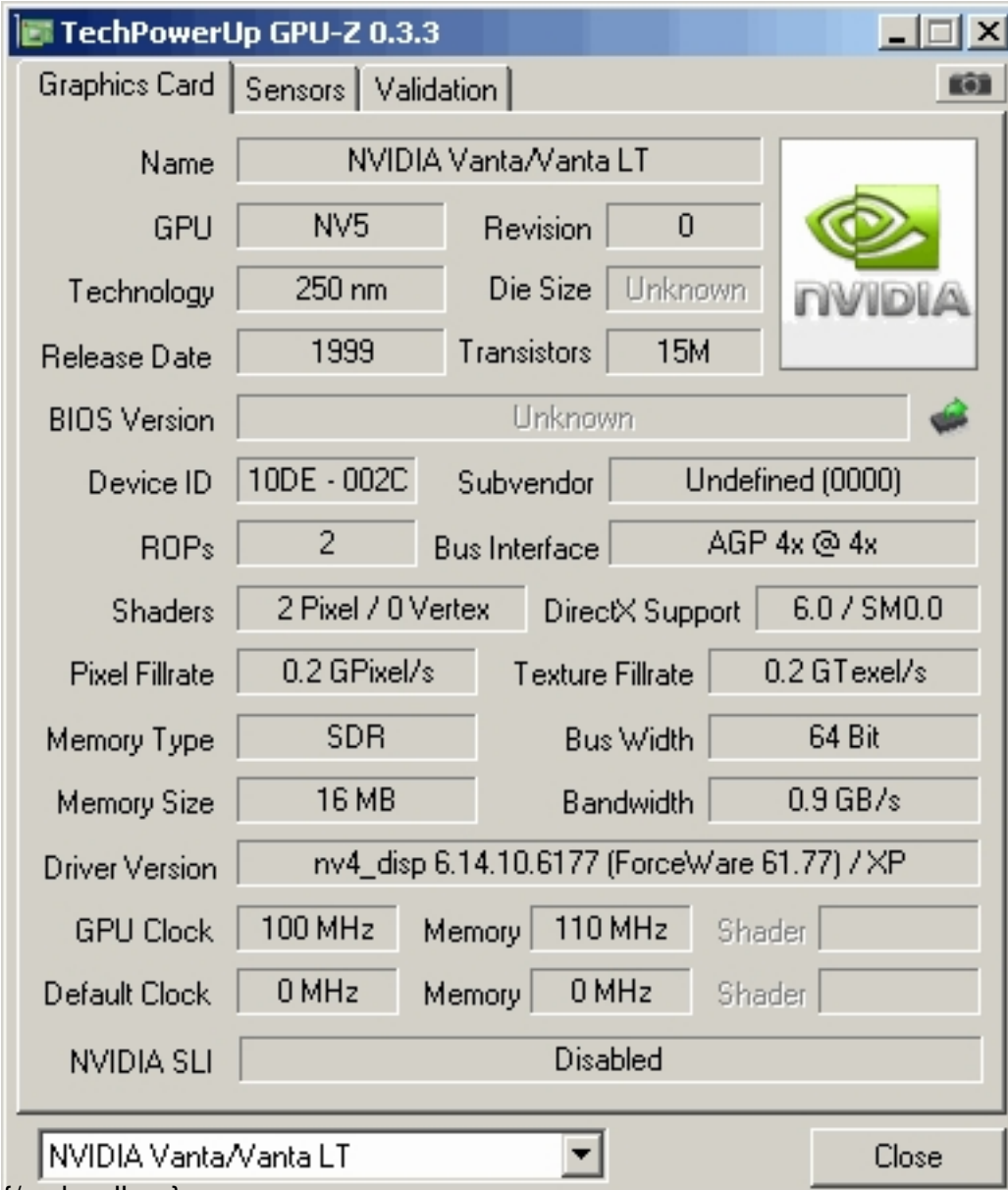
Wednesday, 14 October 2009 20:10 - Last Updated Sunday, 05 May 2013 23:18



NVIDIA Riva TNT2 M64 Vanta

Written by Vlask

Wednesday, 14 October 2009 20:10 - Last Updated Sunday, 05 May 2013 23:18



The screenshot shows the TechPowerUp GPU-Z 0.3.3 application window. The 'Graphics Card' tab is selected, displaying the following specifications for an NVIDIA Vanta/Vanta LT:

Field	Value
Name	NVIDIA Vanta/Vanta LT
GPU	NV5
Revision	0
Technology	250 nm
Die Size	Unknown
Release Date	1999
Transistors	15M
BIOS Version	Unknown
Device ID	10DE - 002C
Subvendor	Undefined (0000)
ROPs	2
Bus Interface	AGP 4x @ 4x
Shaders	2 Pixel / 0 Vertex
DirectX Support	6.0 / SM0.0
Pixel Fillrate	0.2 GPixel/s
Texture Fillrate	0.2 GTexel/s
Memory Type	SDR
Bus Width	64 Bit
Memory Size	16 MB
Bandwidth	0.9 GB/s
Driver Version	nv4_disp 6.14.10.6177 (ForceWare 61.77) / XP
GPU Clock	100 MHz
Memory	110 MHz
Shader	
Default Clock	0 MHz
Memory	0 MHz
Shader	
NVIDIA SLI	Disabled

At the bottom of the window, there is a dropdown menu showing 'NVIDIA Vanta/Vanta LT' and a 'Close' button.

{/webgallery}