

NVIDIA Riva TNT2 M64

Written by Vlask

Wednesday, 14 October 2009 20:23 - Last Updated Sunday, 05 May 2013 23:18



Core: NV5 125MHz 128bit

Memory: 32MB SDR 125MHz 64bit

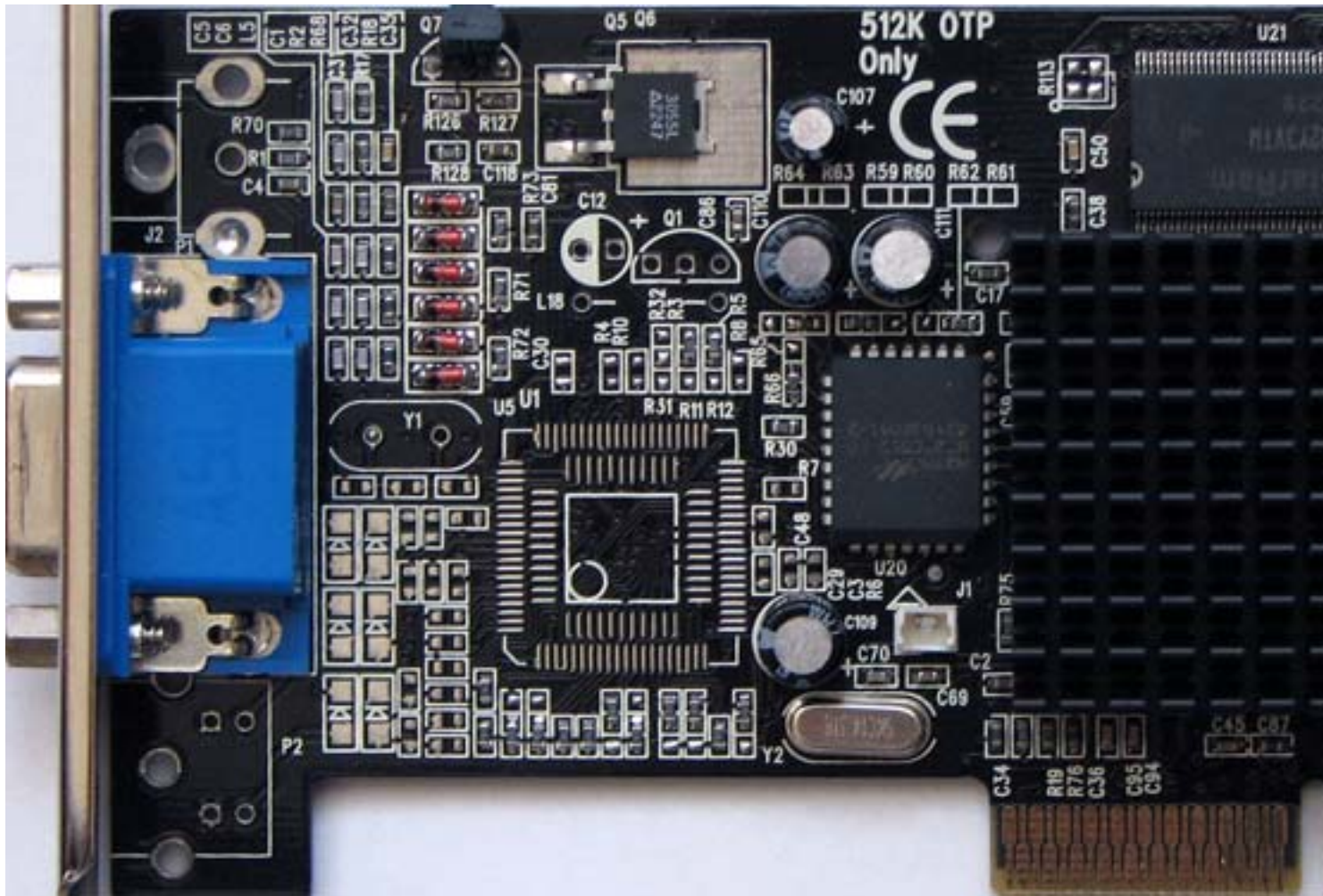
Year: 1999 **Bus:** AGP 4x / PCI

Made: TSMC 250nm Taiwan **Links:** [OpenGL](#)

Bios: [Inno3D](#)

{webgallery}

Wednesday, 14 October 2009 20:23 - Last Updated Sunday, 05 May 2013 23:18



NVIDIA Riva TNT2 M64

Written by Vlask

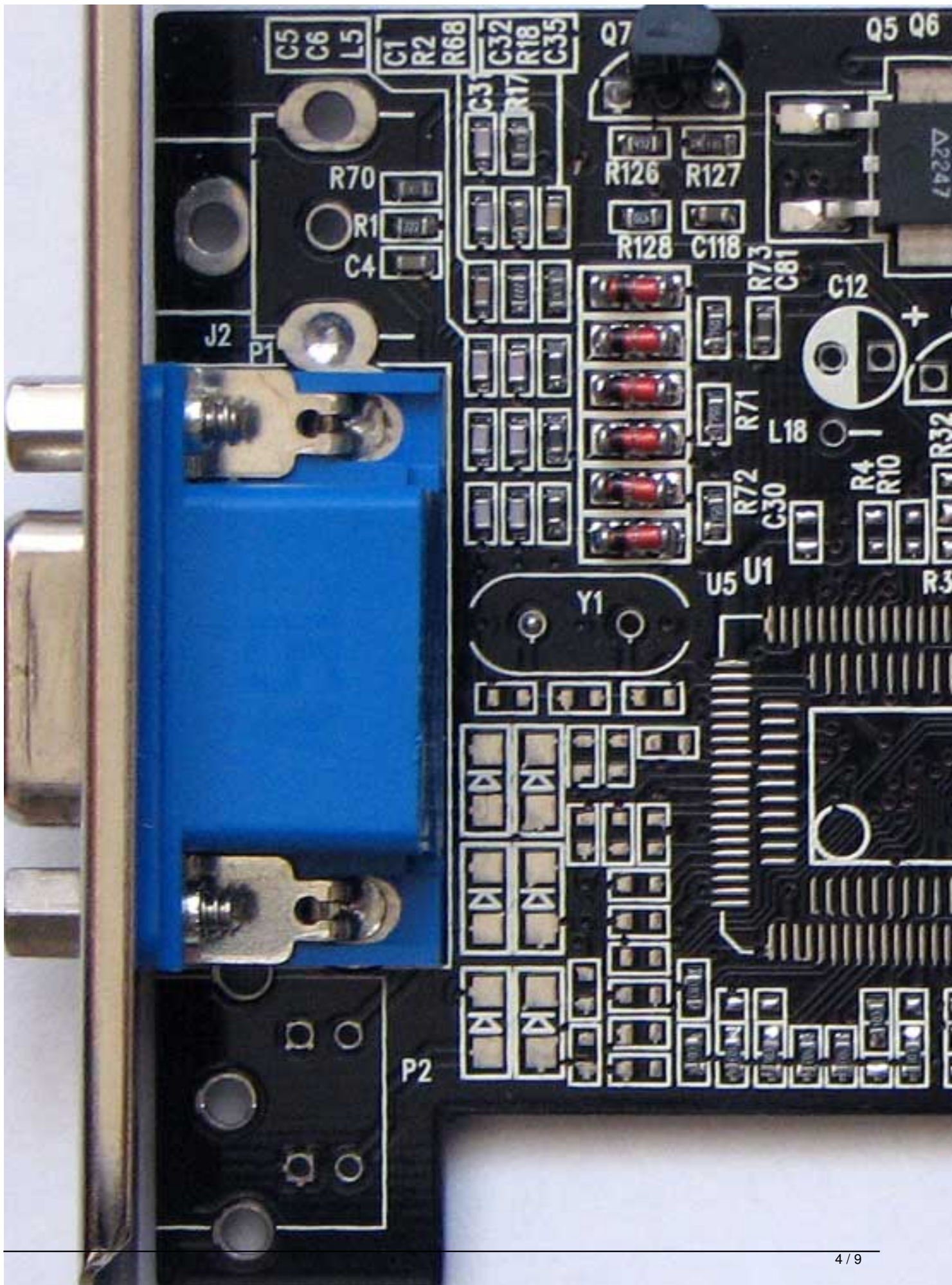
Wednesday, 14 October 2009 20:23 - Last Updated Sunday, 05 May 2013 23:18



NVIDIA Riva TNT2 M64

Written by Vlask

Wednesday, 14 October 2009 20:23 - Last Updated Sunday, 05 May 2013 23:18

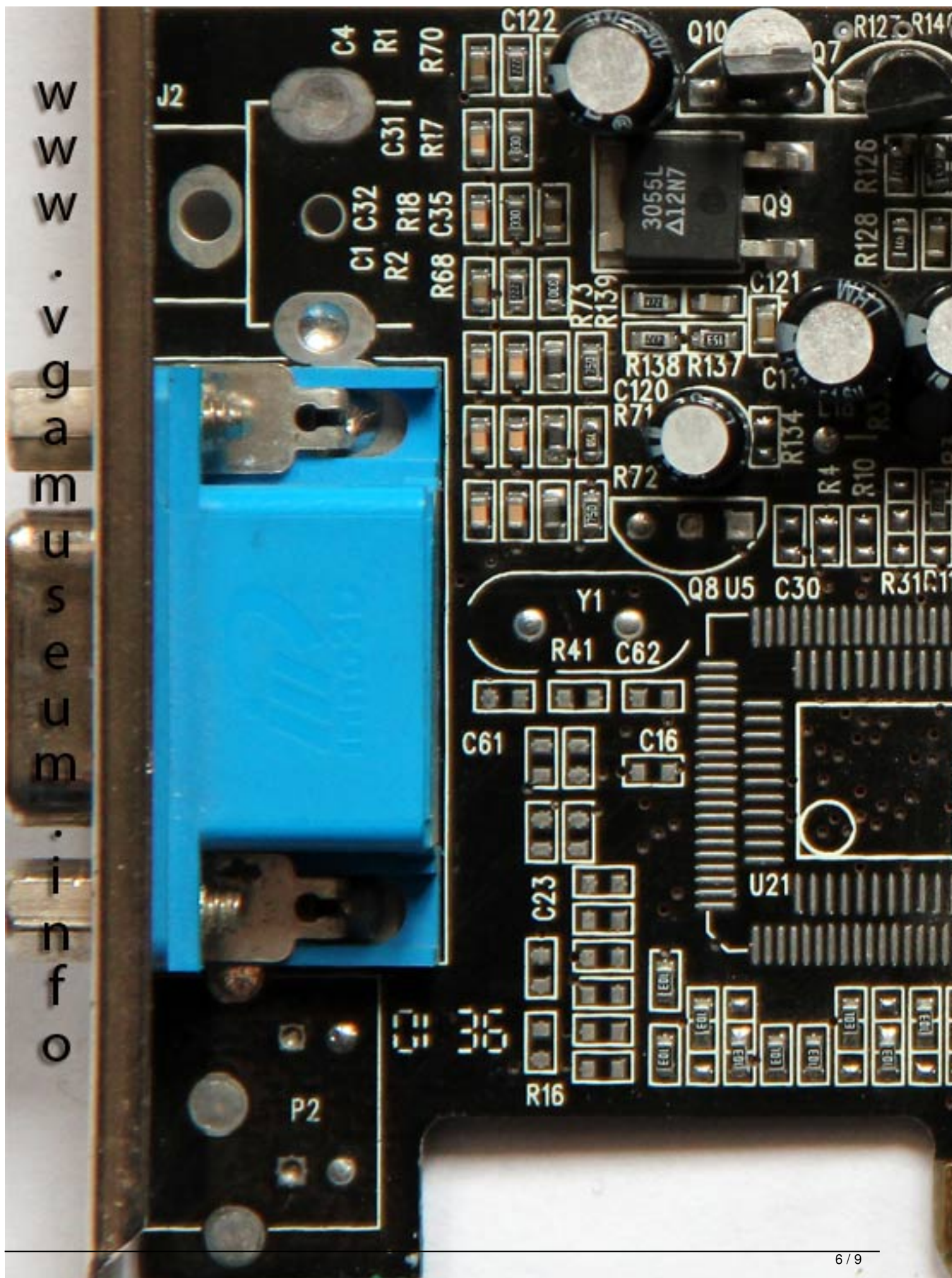


NVIDIA Riva TNT2 M64

Written by Vlask

Wednesday, 14 October 2009 20:23 - Last Updated Sunday, 05 May 2013 23:18

Written by Vlask
Wednesday, 14 October 2009 20:23 - Last Updated Sunday, 05 May 2013 23:18



NVIDIA Riva TNT2 M64

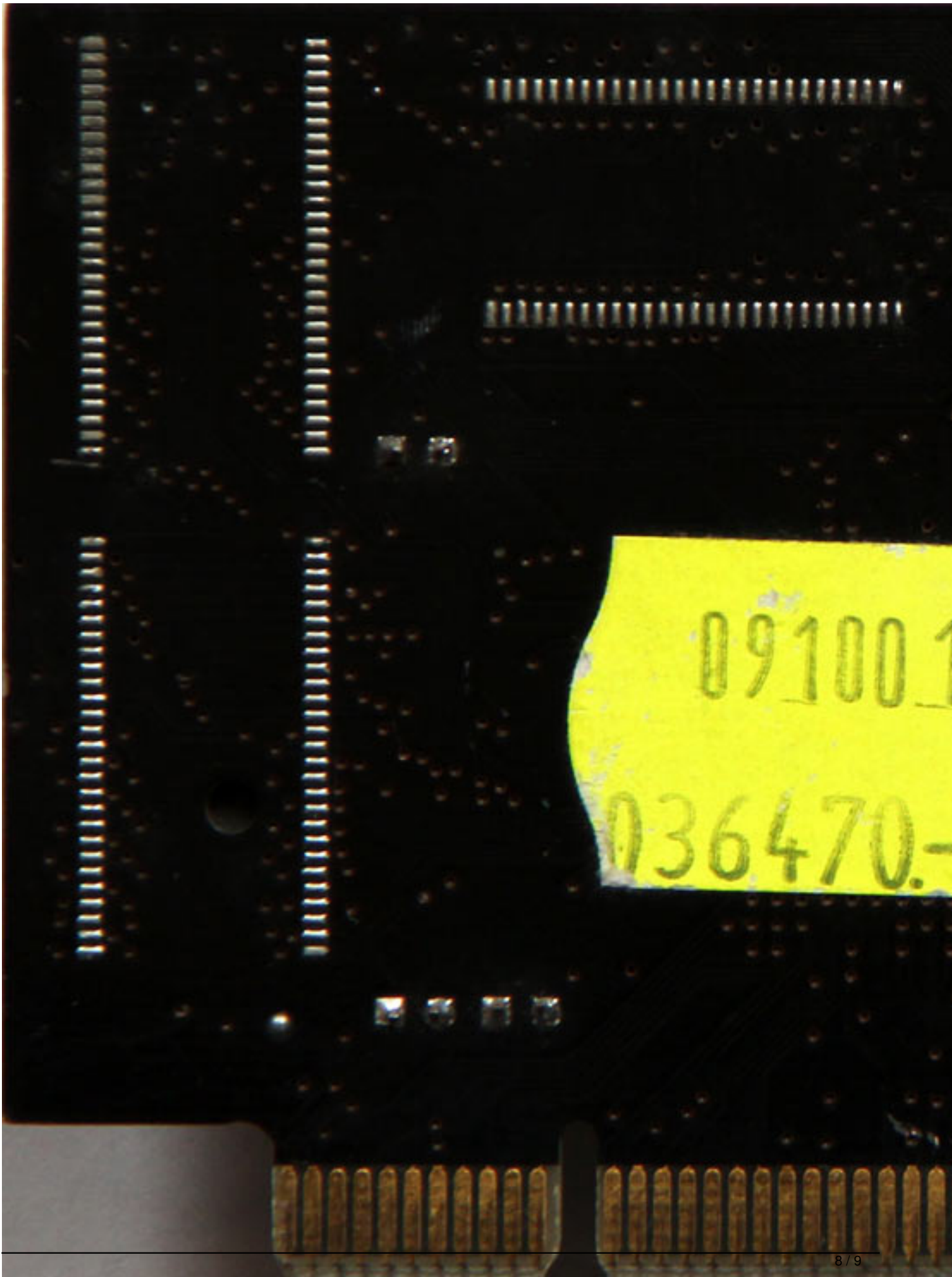
Written by Vlask

Wednesday, 14 October 2009 20:23 - Last Updated Sunday, 05 May 2013 23:18

NVIDIA Riva TNT2 M64

Written by Vlask

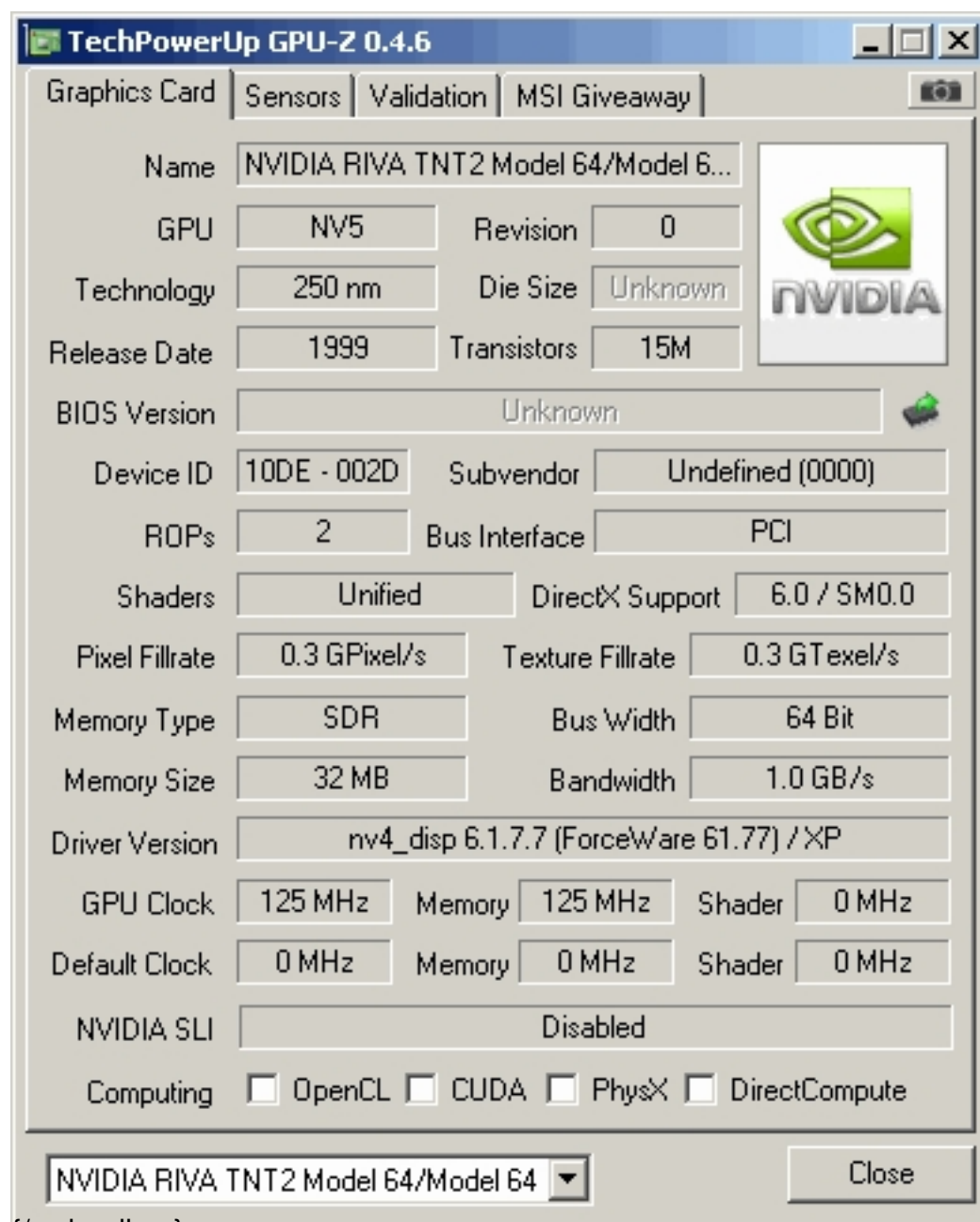
Wednesday, 14 October 2009 20:23 - Last Updated Sunday, 05 May 2013 23:18



NVIDIA Riva TNT2 M64

Written by Vlask

Wednesday, 14 October 2009 20:23 - Last Updated Sunday, 05 May 2013 23:18



The screenshot shows the TechPowerUp GPU-Z 0.4.6 application window. The 'Graphics Card' tab is selected, displaying the following information:

Graphics Card			
Name	NVIDIA RIVA TNT2 Model 64/Model 64		
GPU	NV5	Revision	0
Technology	250 nm	Die Size	Unknown
Release Date	1999	Transistors	15M
BIOS Version	Unknown		
Device ID	10DE - 002D	Subvendor	Undefined (0000)
ROPs	2	Bus Interface	PCI
Shaders	Unified	DirectX Support	6.0 / SM0.0
Pixel Fillrate	0.3 GPixel/s	Texture Fillrate	0.3 GTexel/s
Memory Type	SDR	Bus Width	64 Bit
Memory Size	32 MB	Bandwidth	1.0 GB/s
Driver Version	nv4_disp 6.1.7.7 (ForceWare 61.77) / XP		
GPU Clock	125 MHz	Memory	125 MHz
Default Clock	0 MHz	Memory	0 MHz
Shader	0 MHz	Shader	0 MHz
NVIDIA SLI	Disabled		
Computing	<input type="checkbox"/> OpenCL <input type="checkbox"/> CUDA <input type="checkbox"/> PhysX <input type="checkbox"/> DirectCompute		

At the bottom, there is a dropdown menu showing 'NVIDIA RIVA TNT2 Model 64/Model 64' and a 'Close' button.

{/webgallery}