

NVIDIA Riva TNT2

Written by Vlask

Wednesday, 14 October 2009 20:36 - Last Updated Sunday, 05 May 2013 23:17



Core: NV5 125MHz 128bit

Memory: 16/32MB SDR 150MHz 128bit

Year: 1999 **Bus:** AGP 4x / AGP 2x

Made: TSMC 250nm Taiwan **Links:** [Techspot](#) [Anandtech](#) [Wikipedia](#)

Bios: [Diamond](#)

Note: Diamond Viper V770 works only in AGP2x mode

{webgallery}

NVIDIA Riva TNT2

Written by Vlask

Wednesday, 14 October 2009 20:36 - Last Updated Sunday, 05 May 2013 23:17



NVIDIA Riva TNT2

Written by Vlask

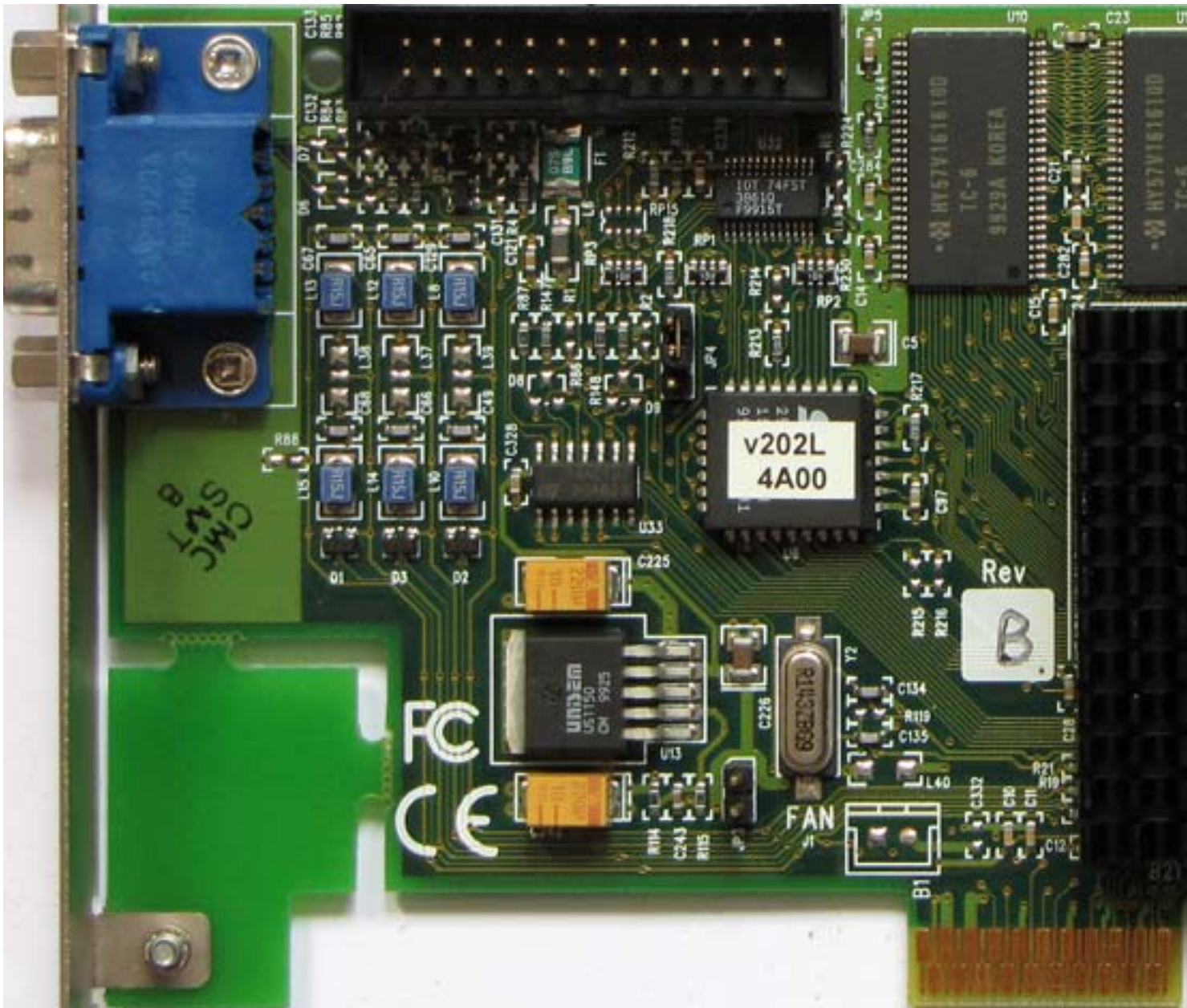
Wednesday, 14 October 2009 20:36 - Last Updated Sunday, 05 May 2013 23:17



NVIDIA Riva TNT2

Written by Vlask

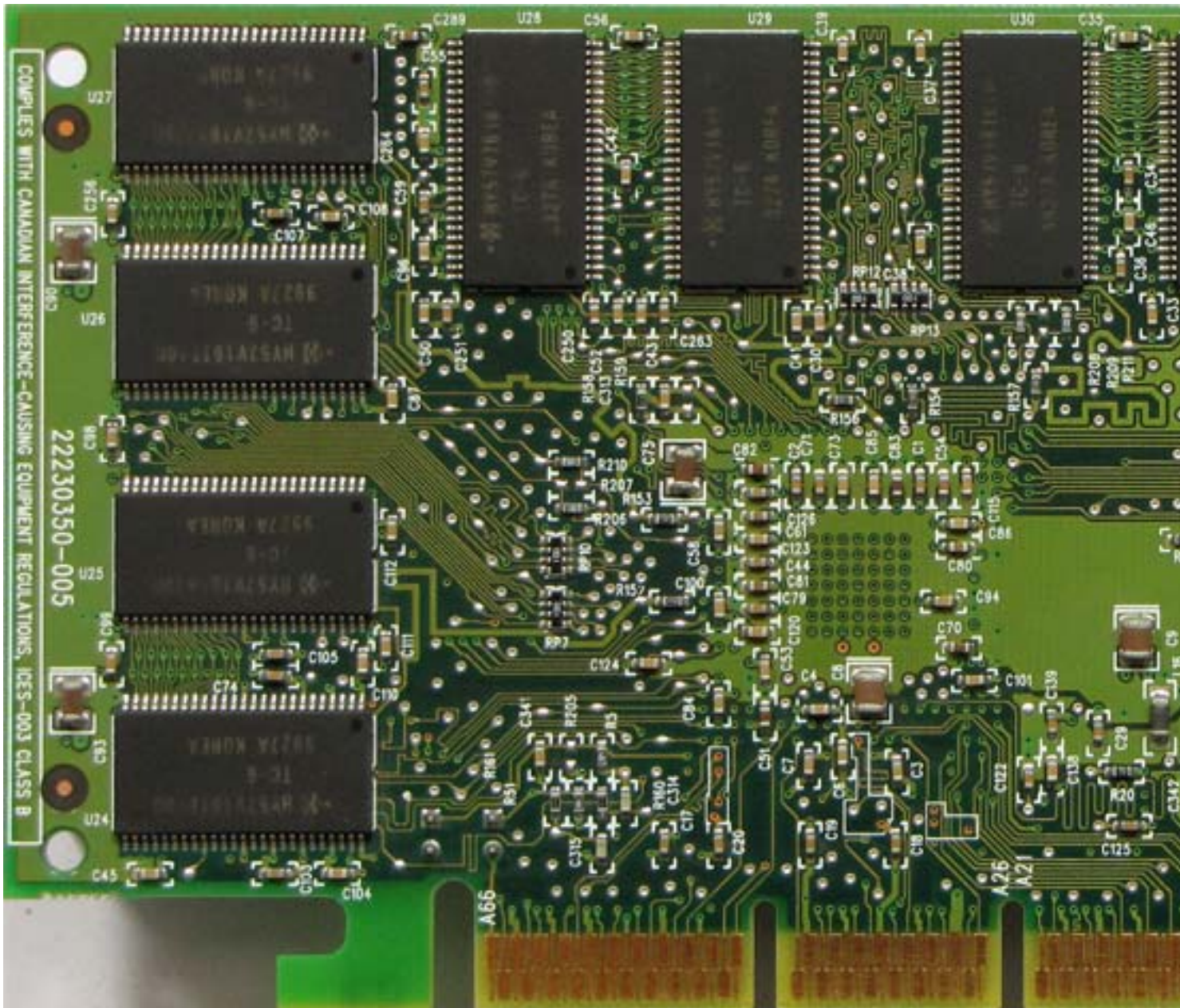
Wednesday, 14 October 2009 20:36 - Last Updated Sunday, 05 May 2013 23:17



NVIDIA Riva TNT2

Written by Vlask

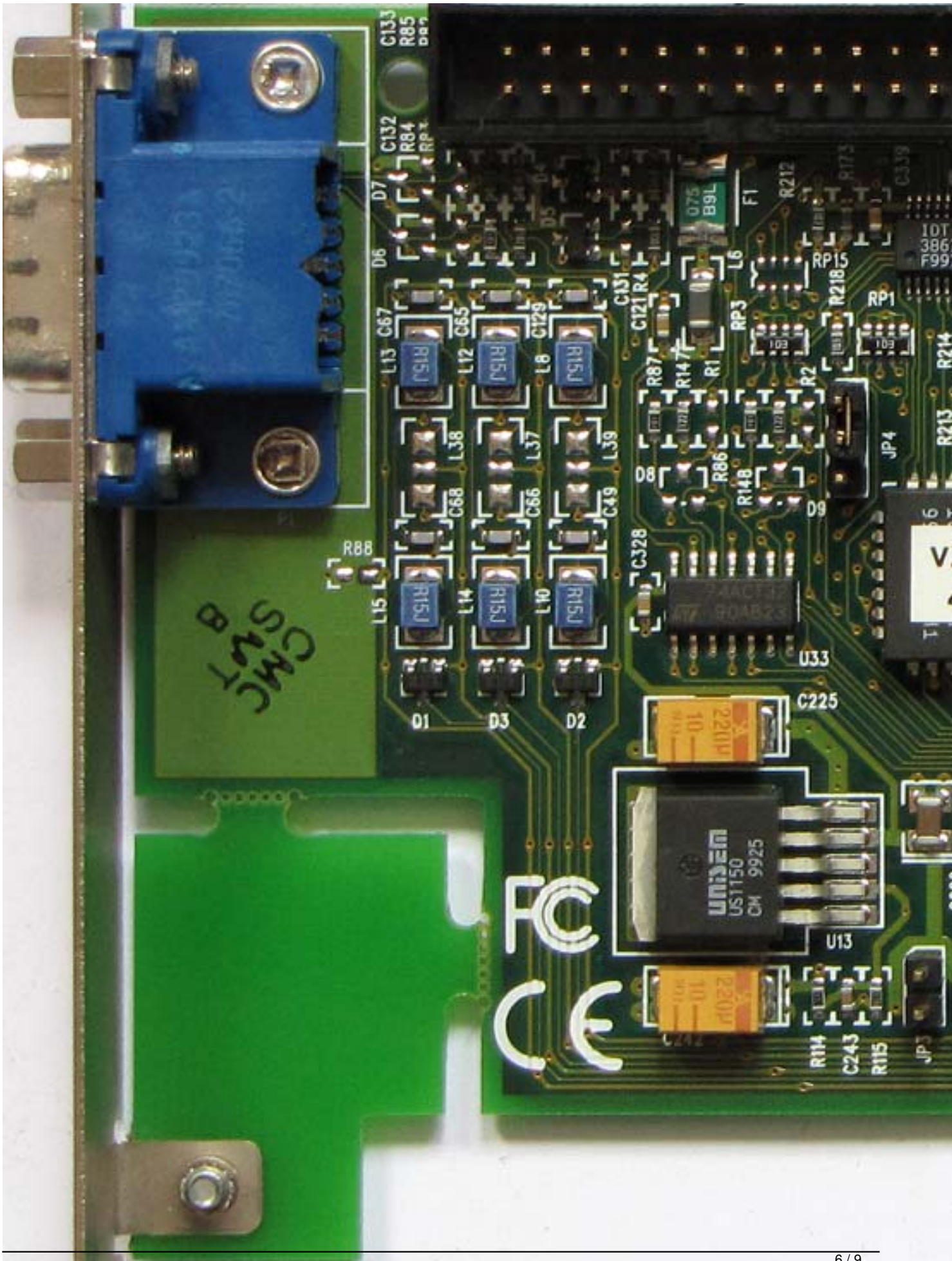
Wednesday, 14 October 2009 20:36 - Last Updated Sunday, 05 May 2013 23:17



NVIDIA Riva TNT2

Written by Vlask

Wednesday, 14 October 2009 20:36 - Last Updated Sunday, 05 May 2013 23:17



NVIDIA Riva TNT2

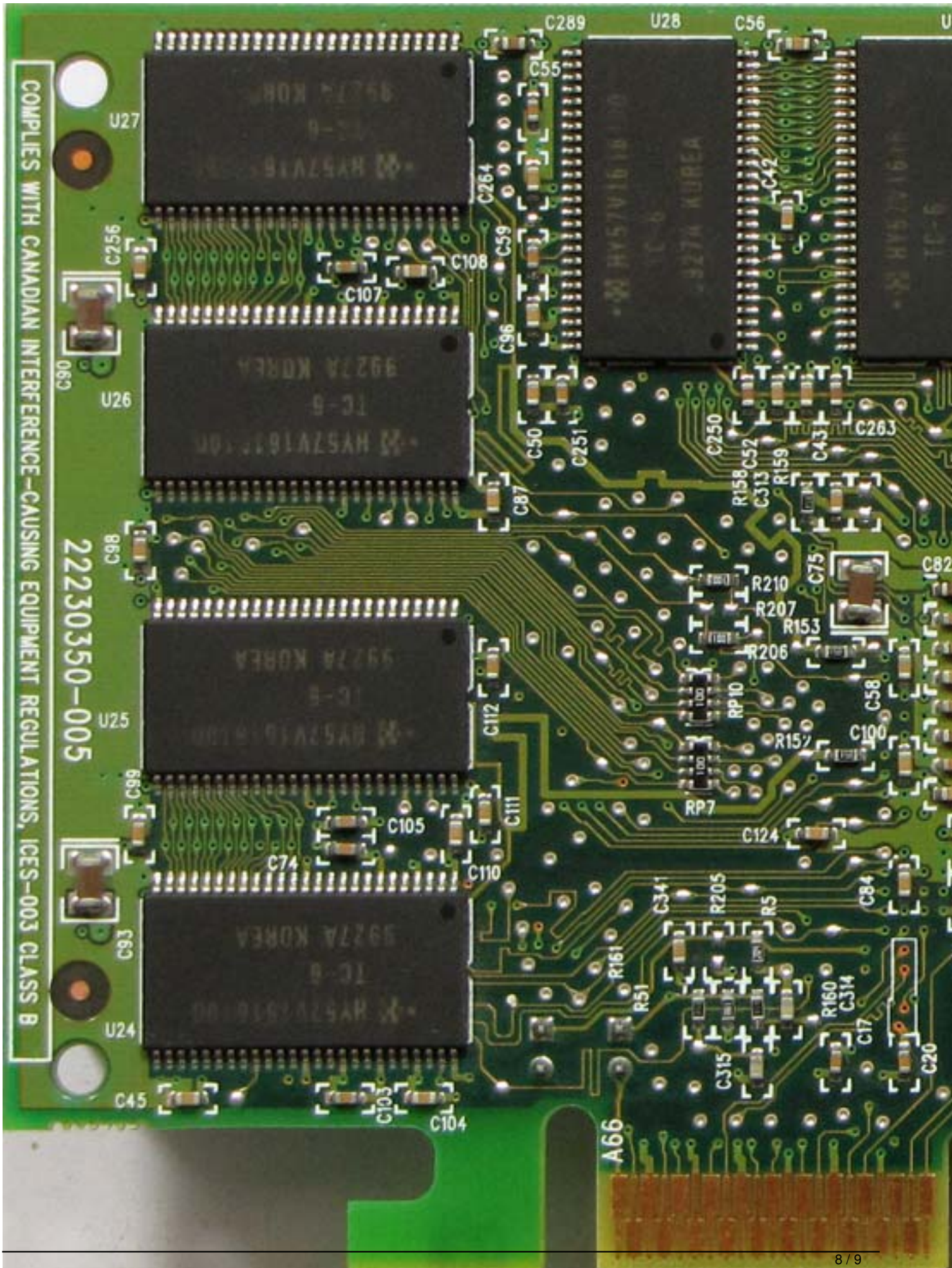
Written by Vlask

Wednesday, 14 October 2009 20:36 - Last Updated Sunday, 05 May 2013 23:17

NVIDIA Riva TNT2

Written by Vlask

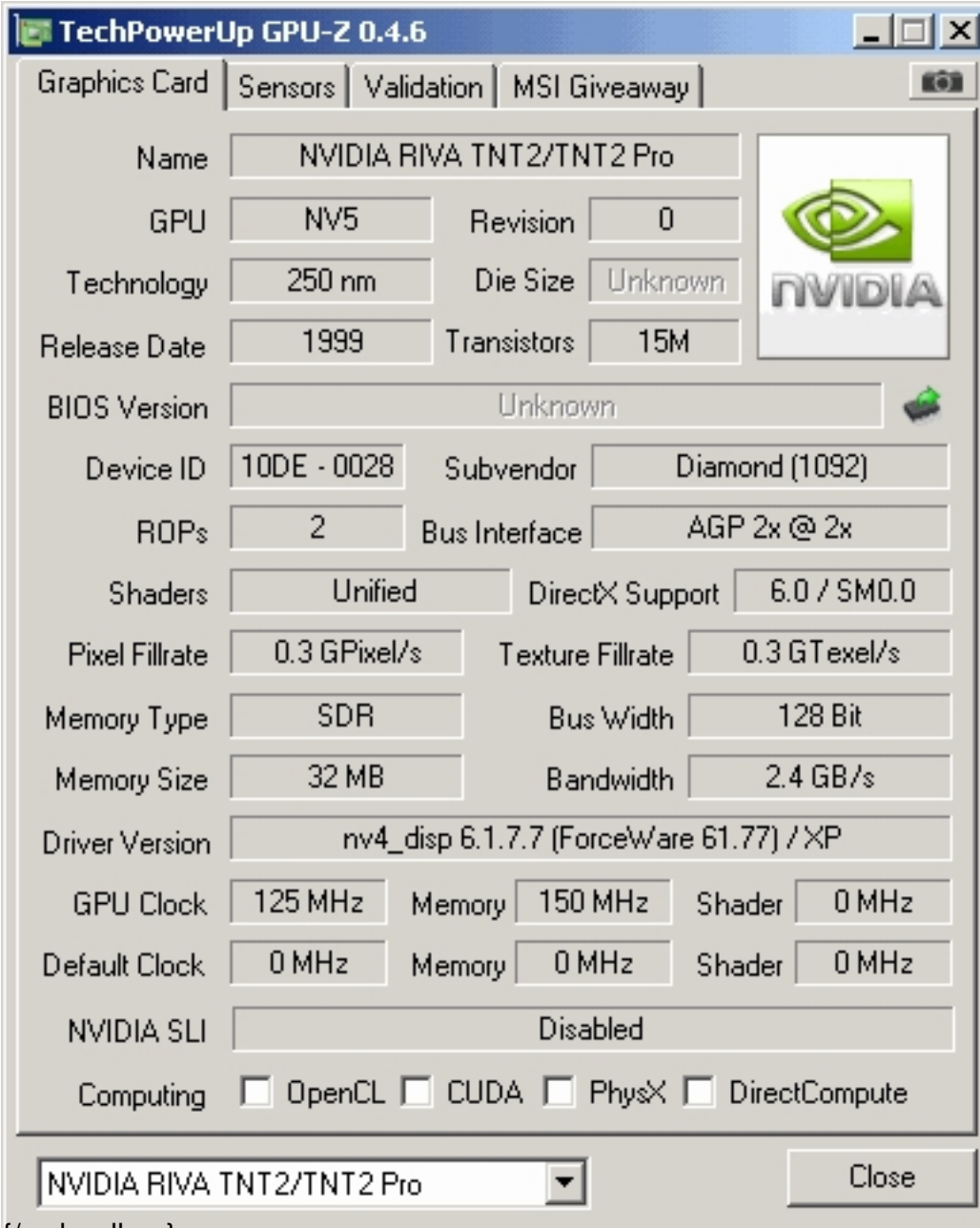
Wednesday, 14 October 2009 20:36 - Last Updated Sunday, 05 May 2013 23:17



NVIDIA Riva TNT2

Written by Vlask

Wednesday, 14 October 2009 20:36 - Last Updated Sunday, 05 May 2013 23:17



The screenshot displays the TechPowerUp GPU-Z 0.4.6 application window. The interface is organized into several sections:

- Graphics Card:** Name: NVIDIA RIVA TNT2/TNT2 Pro; GPU: NV5; Revision: 0; Technology: 250 nm; Die Size: Unknown; Release Date: 1999; Transistors: 15M. Includes the NVIDIA logo.
- BIOS Version:** Unknown.
- Device ID:** 10DE - 0028; Subvendor: Diamond (1092); ROPs: 2; Bus Interface: AGP 2x @ 2x.
- Shaders:** Unified; DirectX Support: 6.0 / SM0.0.
- Pixel Fillrate:** 0.3 GPixel/s; Texture Fillrate: 0.3 GTexel/s.
- Memory Type:** SDR; Bus Width: 128 Bit; Memory Size: 32 MB; Bandwidth: 2.4 GB/s.
- Driver Version:** nv4_disp 6.1.7.7 (ForceWare 61.77) / XP.
- Clocks:** GPU Clock: 125 MHz; Memory: 150 MHz; Shader: 0 MHz. Default Clocks are all 0 MHz.
- NVIDIA SLI:** Disabled.
- Computing:** OpenCL, CUDA, PhysX, and DirectCompute are all disabled (checkboxes are unchecked).

At the bottom, there is a dropdown menu showing "NVIDIA RIVA TNT2/TNT2 Pro" and a "Close" button.

{/webgallery}