

NVIDIA GeForce4 MX 440-8x

Written by Vlask

Sunday, 18 October 2009 19:38 - Last Updated Sunday, 05 May 2013 23:02



Core: NV18 250MHz (default is 270MHz) 256bit

Memory: 64MB DDR 378MHz (default is 400MHz) 64bit

Year: 2002 **Bus:** AGP 8x

Made: TSMC 150nm Korea **Links:** [iXBT Labs](#) [Wikipedia](#) **Price:** \$145

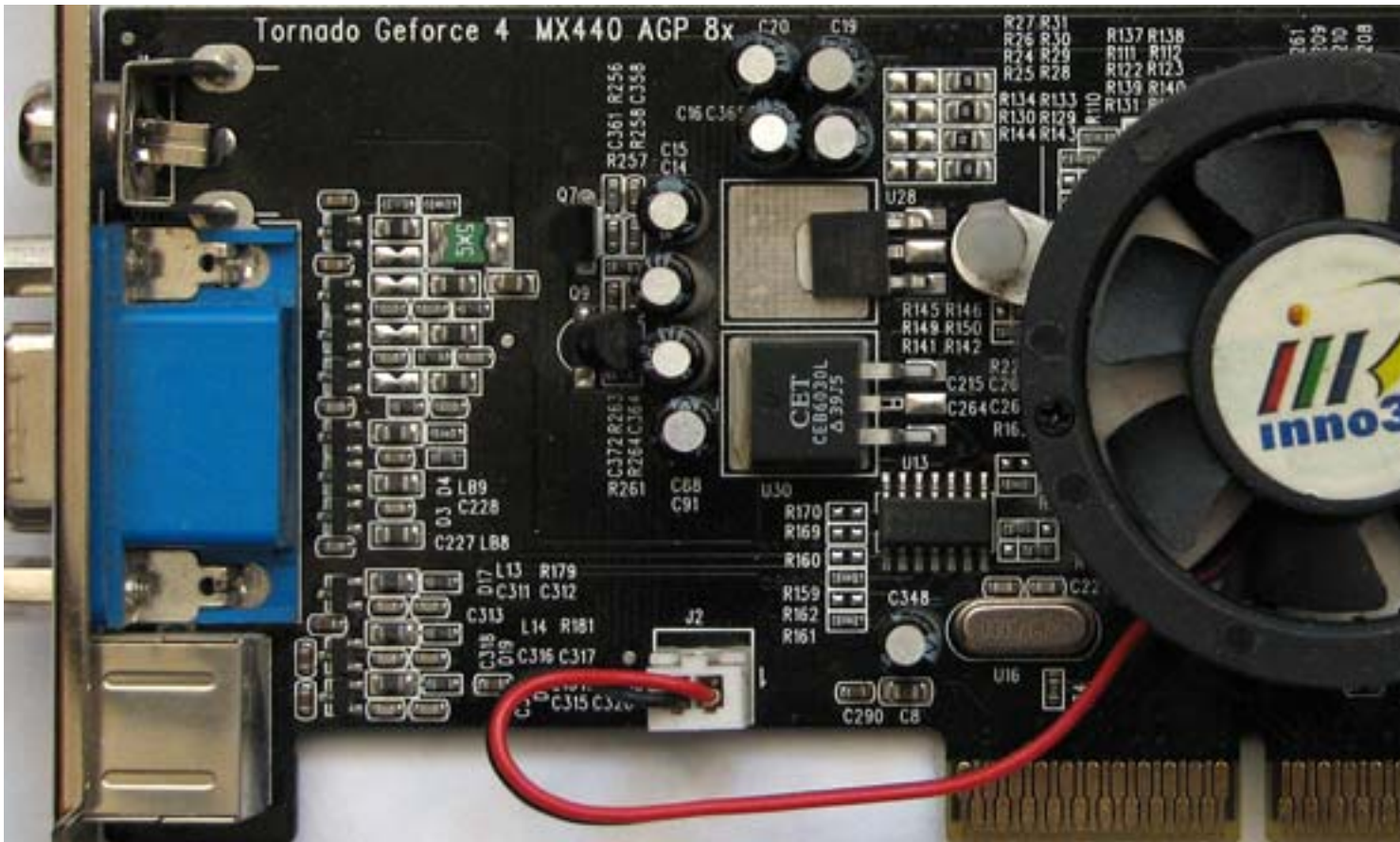
Bios: [here](#)

{webgallery}

NVIDIA GeForce4 MX 440-8x

Written by Vlask

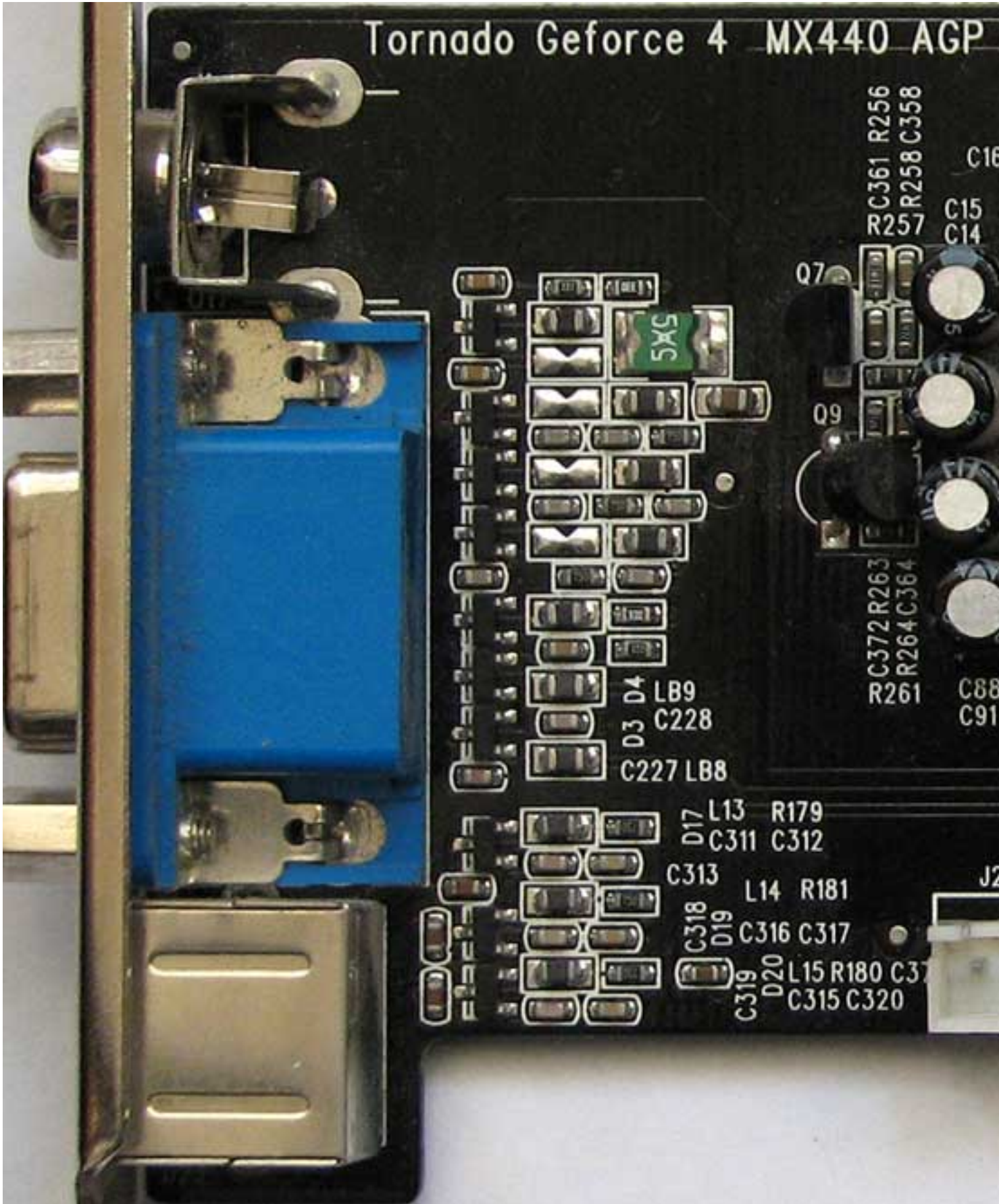
Sunday, 18 October 2009 19:38 - Last Updated Sunday, 05 May 2013 23:02



NVIDIA GeForce4 MX 440-8x

Written by Vlask

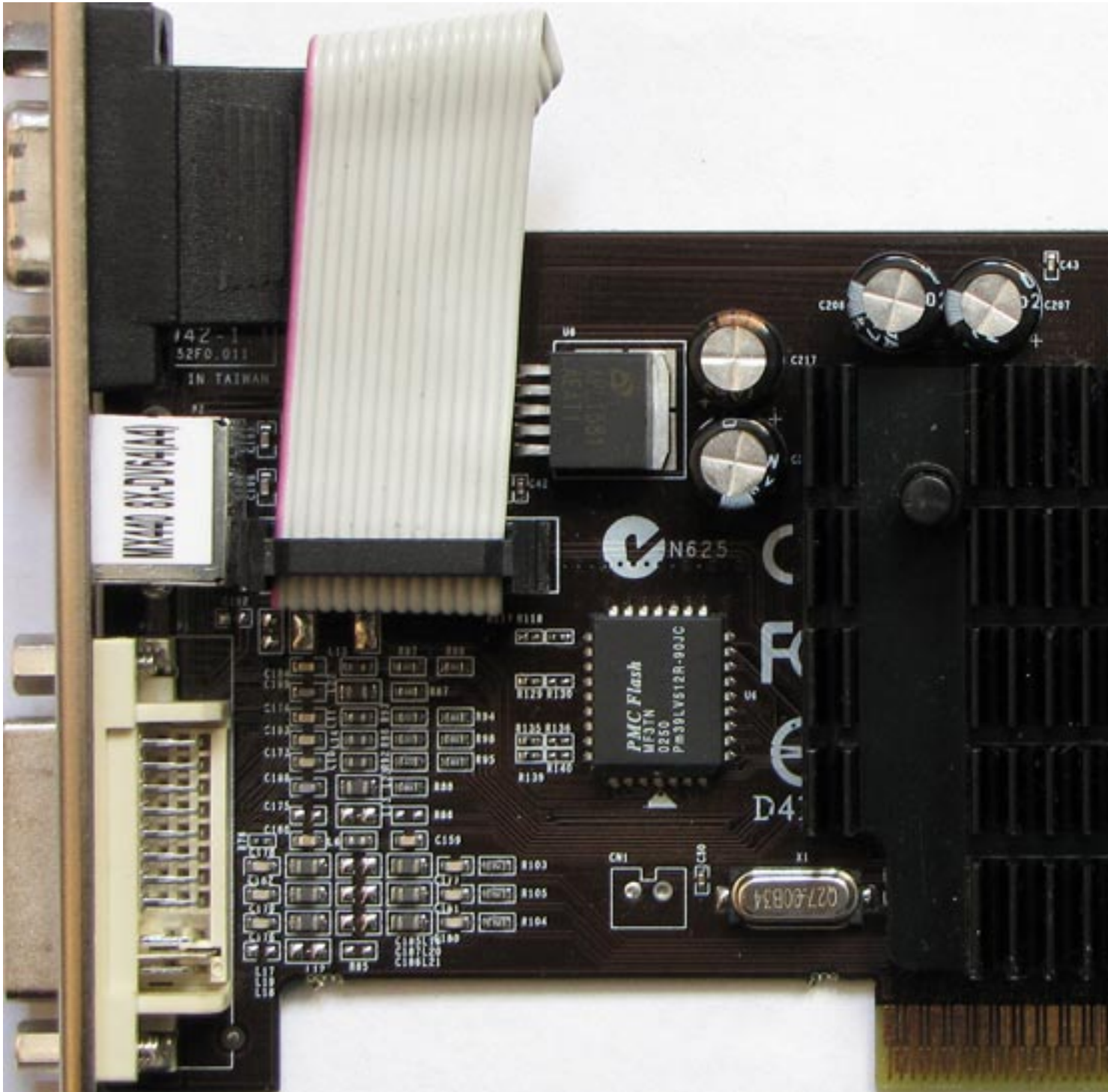
Sunday, 18 October 2009 19:38 - Last Updated Sunday, 05 May 2013 23:02



NVIDIA GeForce4 MX 440-8x

Written by Vlask

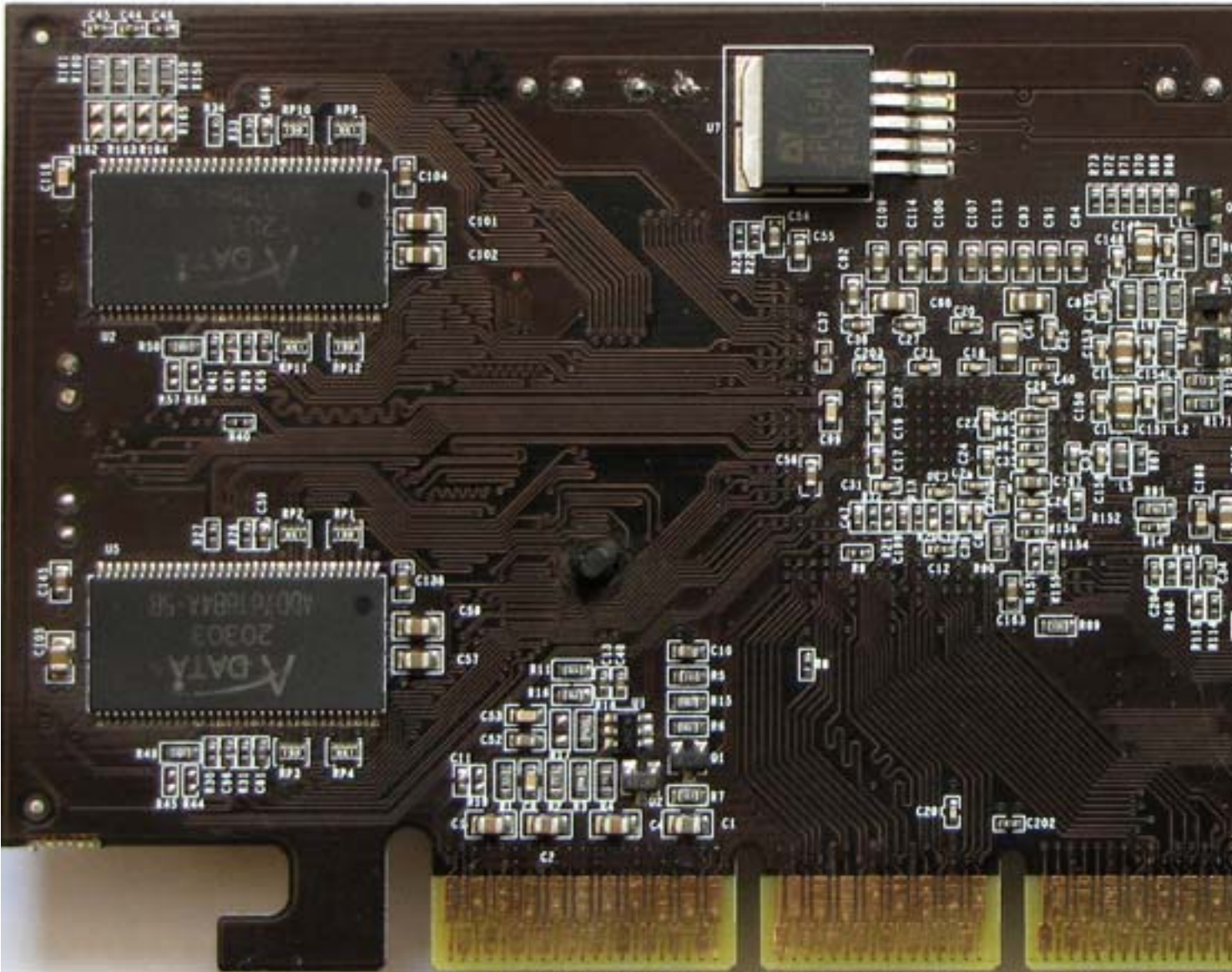
Sunday, 18 October 2009 19:38 - Last Updated Sunday, 05 May 2013 23:02



NVIDIA GeForce4 MX 440-8x

Written by Vlask

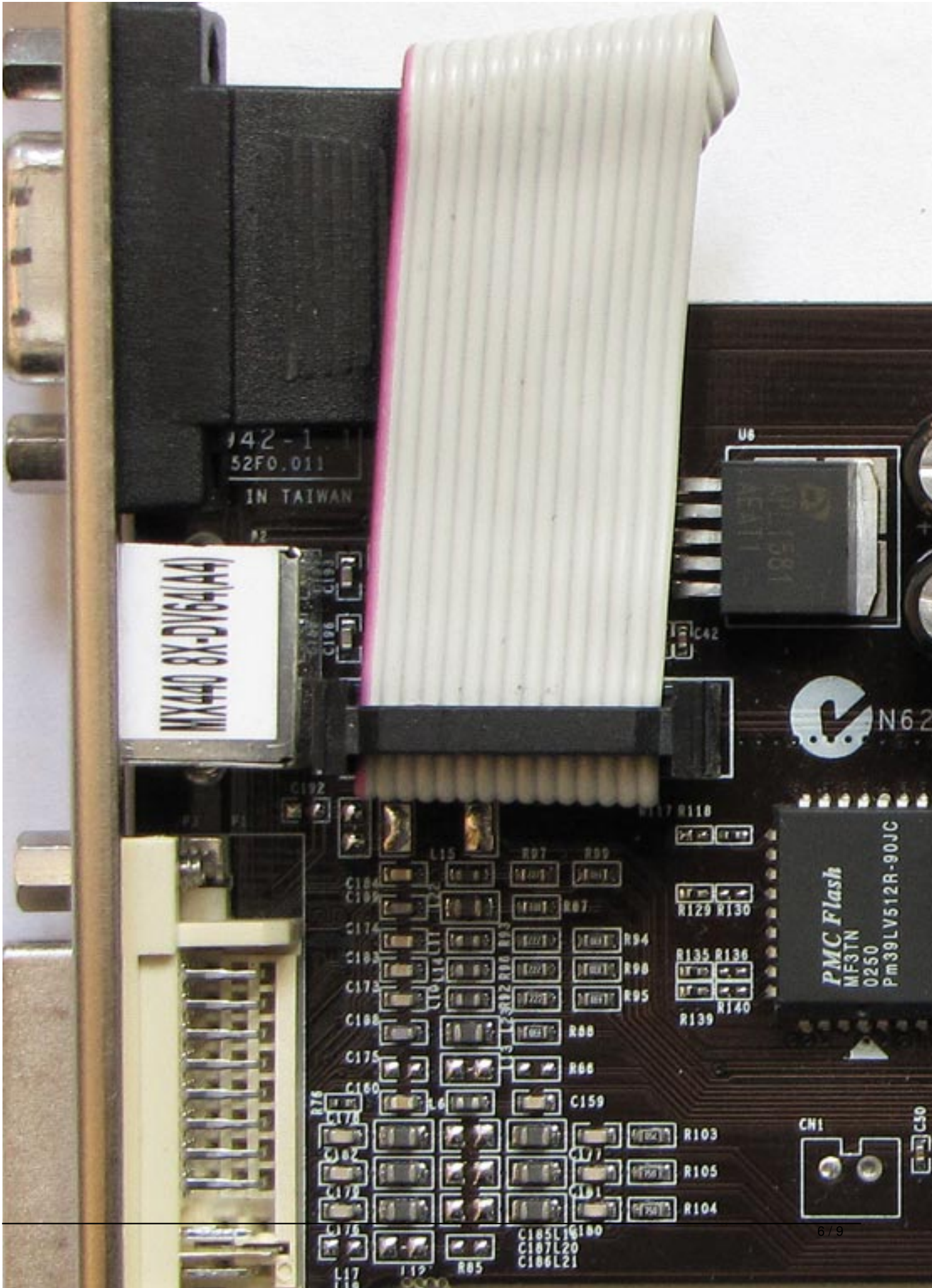
Sunday, 18 October 2009 19:38 - Last Updated Sunday, 05 May 2013 23:02



NVIDIA GeForce4 MX 440-8x

Written by Vlask

Sunday, 18 October 2009 19:38 - Last Updated Sunday, 05 May 2013 23:02



NVIDIA GeForce4 MX 440-8x

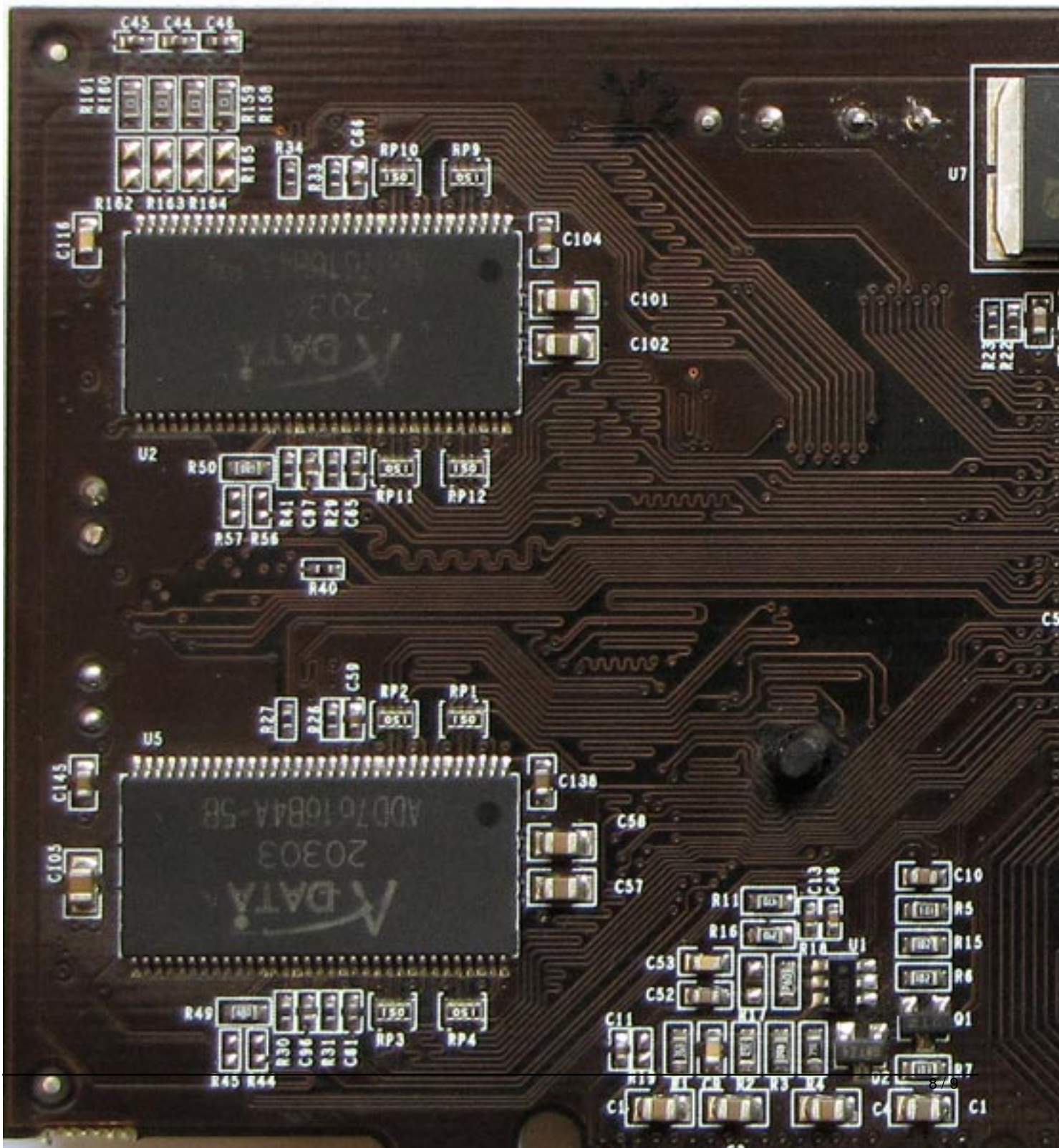
Written by Vlask

Sunday, 18 October 2009 19:38 - Last Updated Sunday, 05 May 2013 23:02

NVIDIA GeForce4 MX 440-8x

Written by Vlask

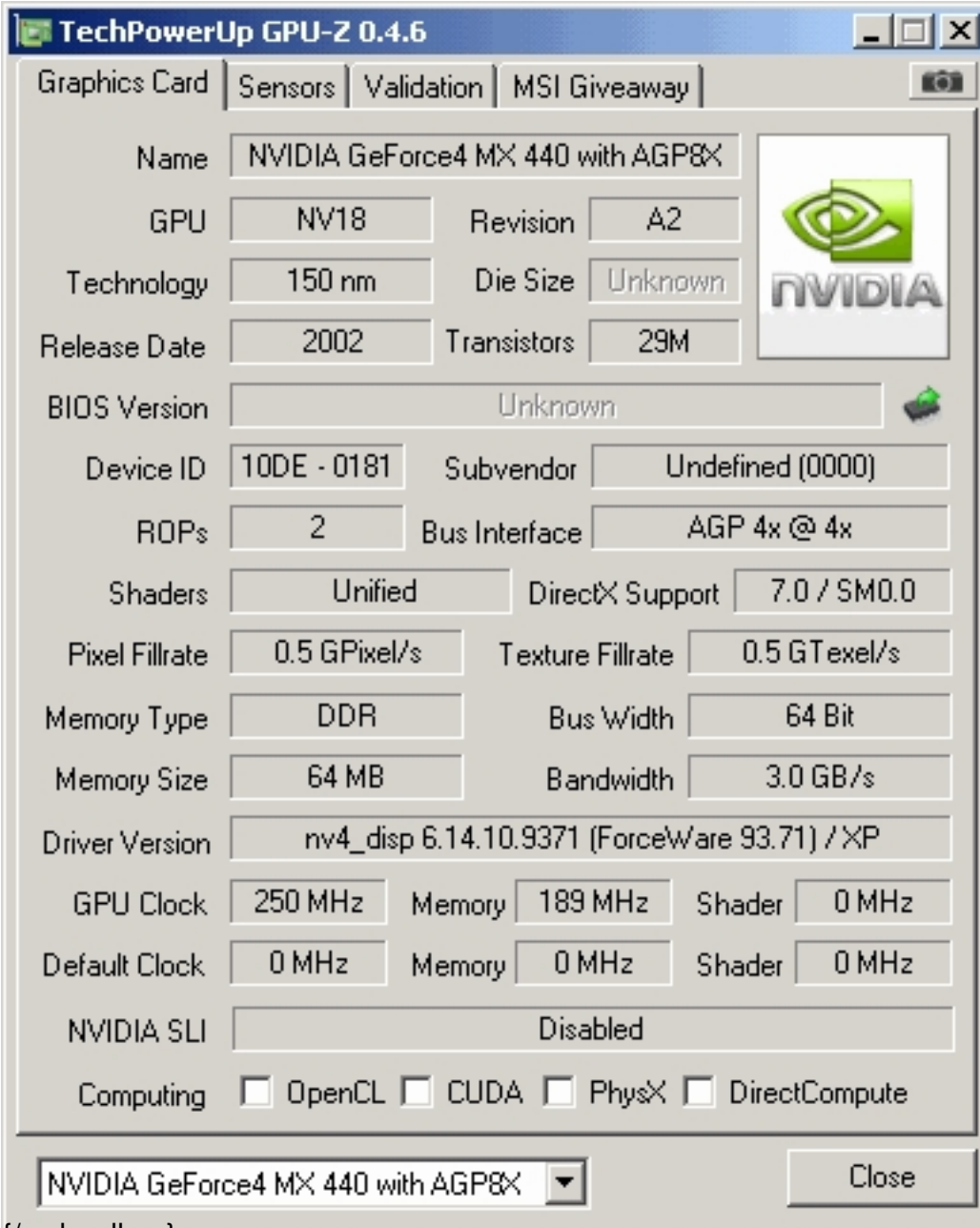
Sunday, 18 October 2009 19:38 - Last Updated Sunday, 05 May 2013 23:02



NVIDIA GeForce4 MX 440-8x

Written by Vlask

Sunday, 18 October 2009 19:38 - Last Updated Sunday, 05 May 2013 23:02



The screenshot shows the TechPowerUp GPU-Z 0.4.6 application window. The 'Graphics Card' tab is selected, displaying the following specifications for an NVIDIA GeForce4 MX 440 with AGP8X:

Field	Value
Name	NVIDIA GeForce4 MX 440 with AGP8X
GPU	NV18
Revision	A2
Technology	150 nm
Die Size	Unknown
Release Date	2002
Transistors	29M
BIOS Version	Unknown
Device ID	10DE - 0181
Subvendor	Undefined (0000)
ROPs	2
Bus Interface	AGP 4x @ 4x
Shaders	Unified
DirectX Support	7.0 / SM0.0
Pixel Fillrate	0.5 GPixel/s
Texture Fillrate	0.5 GTexel/s
Memory Type	DDR
Bus Width	64 Bit
Memory Size	64 MB
Bandwidth	3.0 GB/s
Driver Version	nv4_disp 6.14.10.9371 (ForceWare 93.71) / XP
GPU Clock	250 MHz
Memory	189 MHz
Shader	0 MHz
Default Clock	0 MHz
Memory	0 MHz
Shader	0 MHz
NVIDIA SLI	Disabled
Computing	<input type="checkbox"/> OpenCL <input type="checkbox"/> CUDA <input type="checkbox"/> PhysX <input type="checkbox"/> DirectCompute

At the bottom of the window, there is a dropdown menu showing 'NVIDIA GeForce4 MX 440 with AGP8X' and a 'Close' button.

{/webgallery}