

NVIDIA GeForce 8600 GT

Written by Vlask

Sunday, 04 September 2011 19:27 - Last Updated Sunday, 05 May 2013 22:43



Core: G84 540MHz 32 shaders at 1188MHz

Memory: 256MB GDDR3 1404MHz 128bit

Year: 2007 **Bus:** PCI-E 16x

Made: TSMC 80nm Taiwan **Links:** [Overclockersclub](#) [Beyond3D](#) [Opengl](#)

Bios: [Zotac](#)

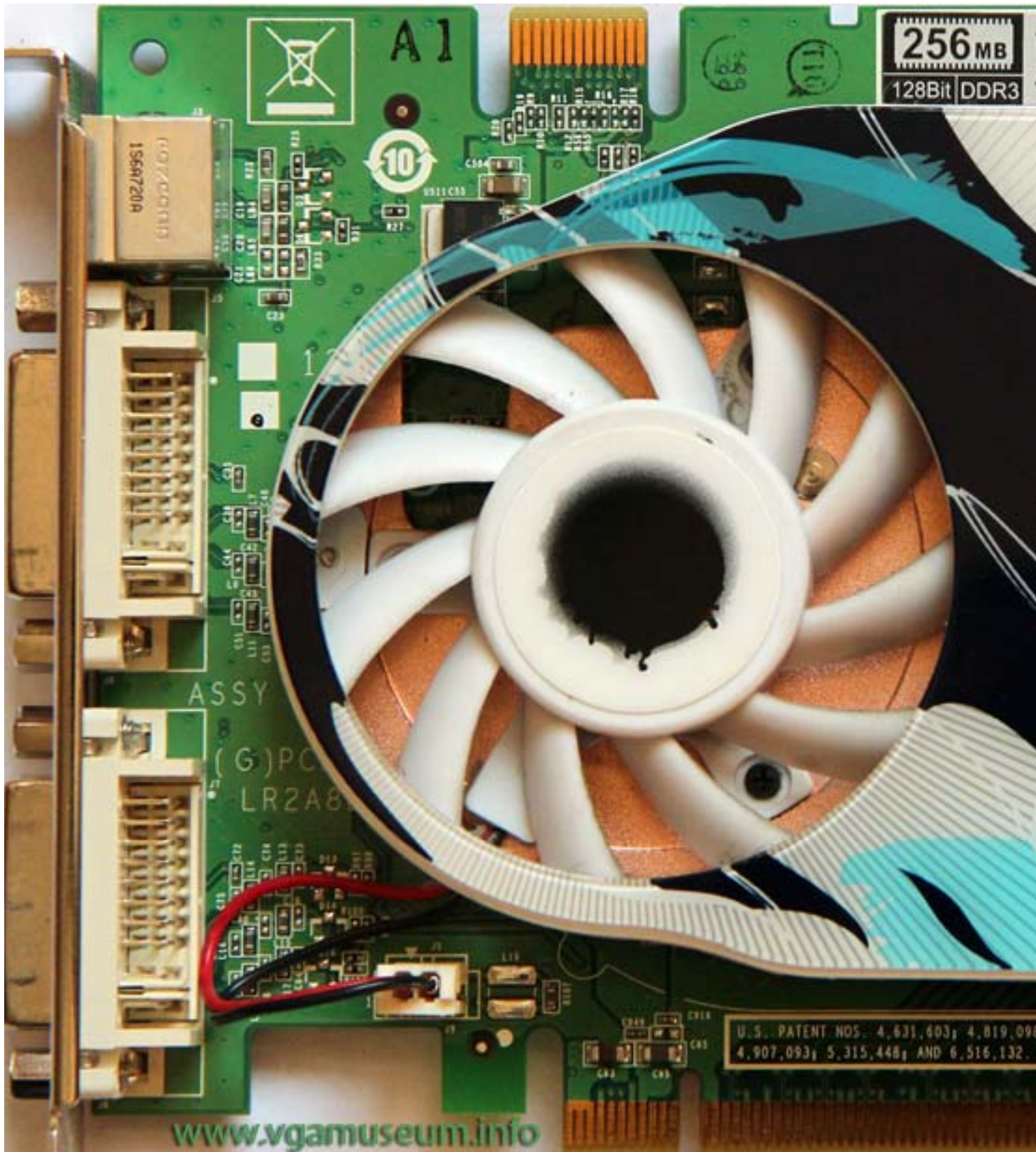
Note: Zotac card have replaced all except 3 silver capacitors in center

{webgallery}

NVIDIA GeForce 8600 GT

Written by Vlask

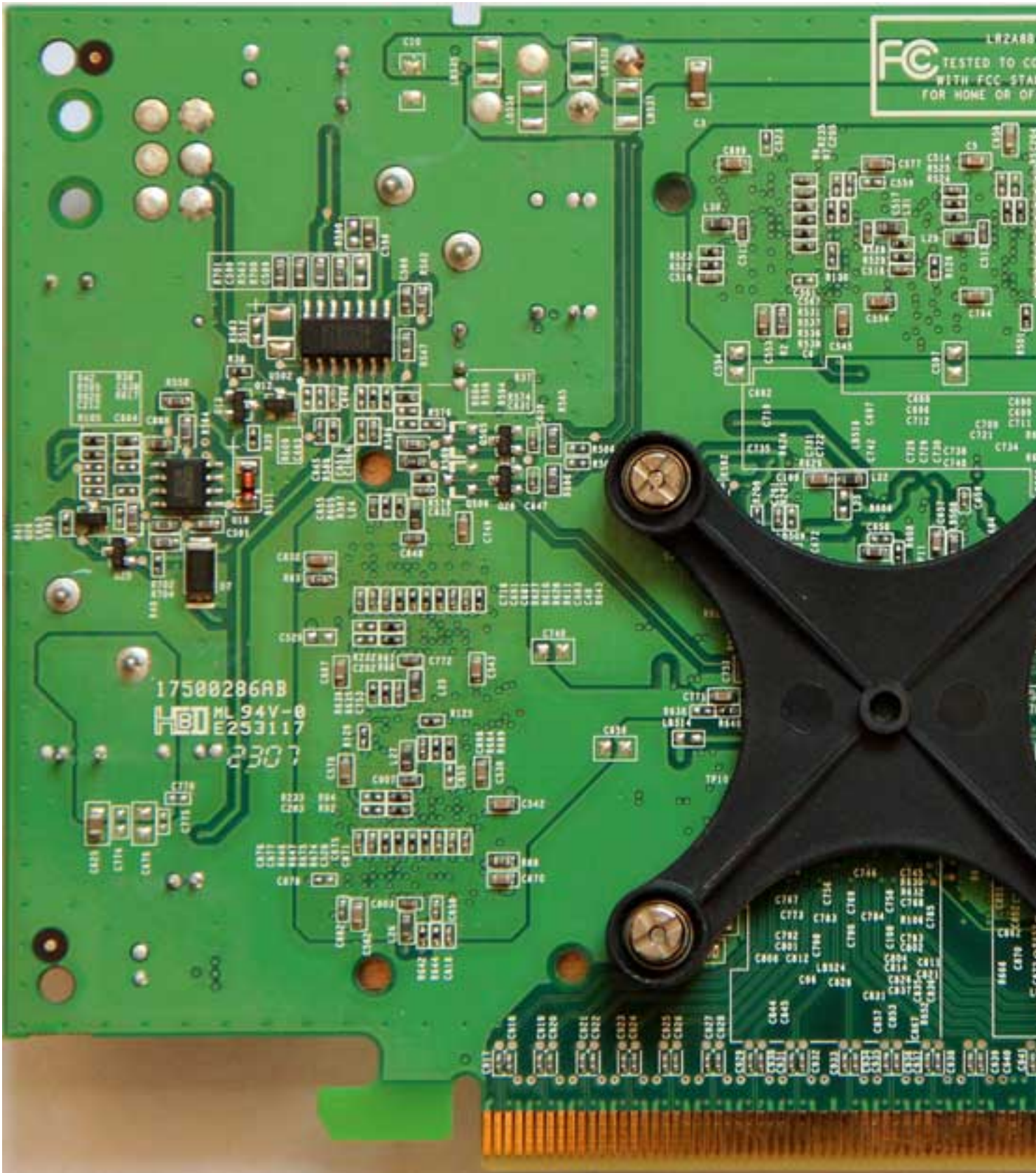
Sunday, 04 September 2011 19:27 - Last Updated Sunday, 05 May 2013 22:43



NVIDIA GeForce 8600 GT

Written by Vlask

Sunday, 04 September 2011 19:27 - Last Updated Sunday, 05 May 2013 22:43



NVIDIA GeForce 8600 GT

Written by Vlask

Sunday, 04 September 2011 19:27 - Last Updated Sunday, 05 May 2013 22:43



NVIDIA GeForce 8600 GT

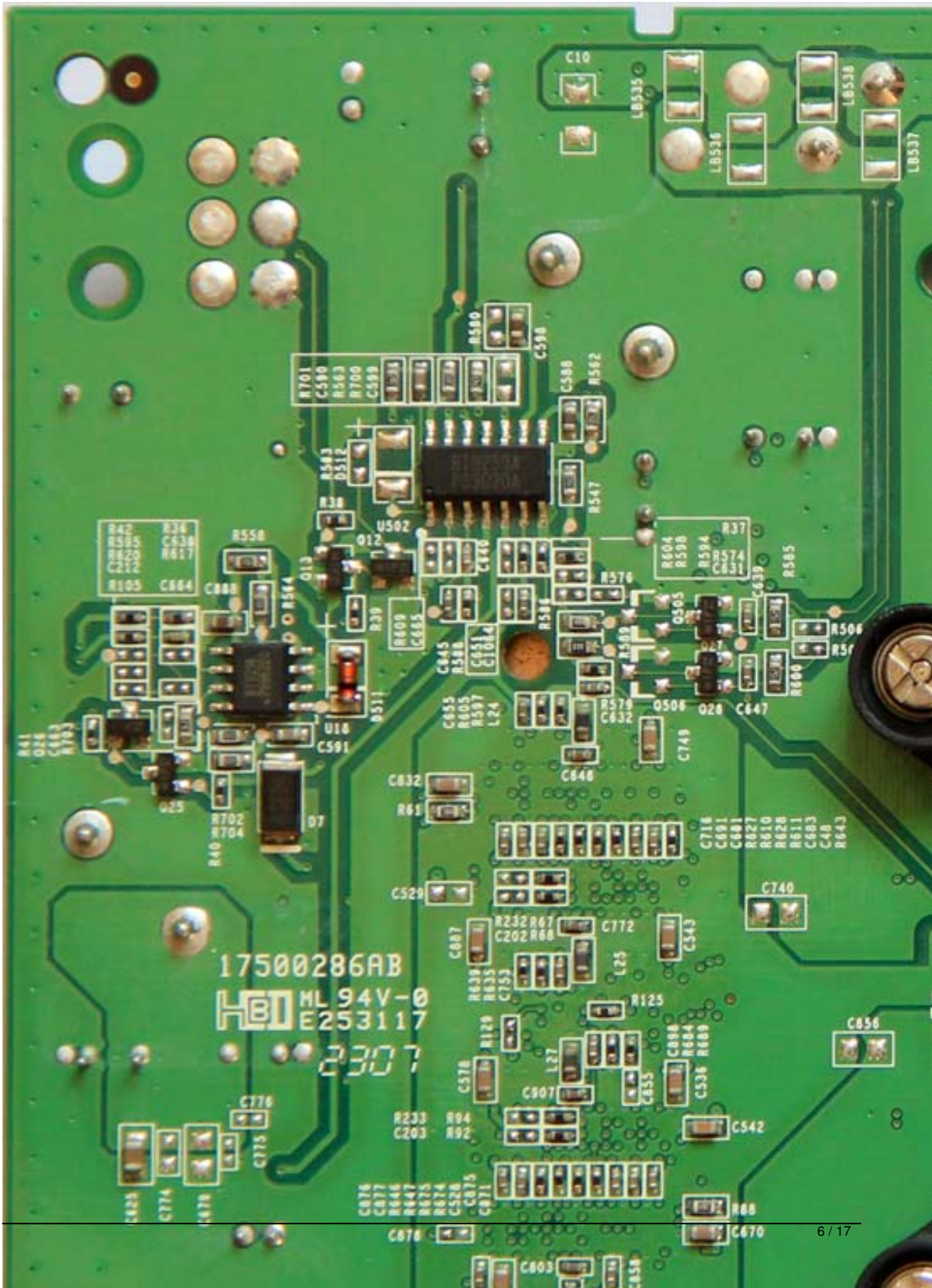
Written by Vlask

Sunday, 04 September 2011 19:27 - Last Updated Sunday, 05 May 2013 22:43

NVIDIA GeForce 8600 GT

Written by Vlask

Sunday, 04 September 2011 19:27 - Last Updated Sunday, 05 May 2013 22:43



17500286AB
HBI ML 94V-0
E253117
2307

NVIDIA GeForce 8600 GT

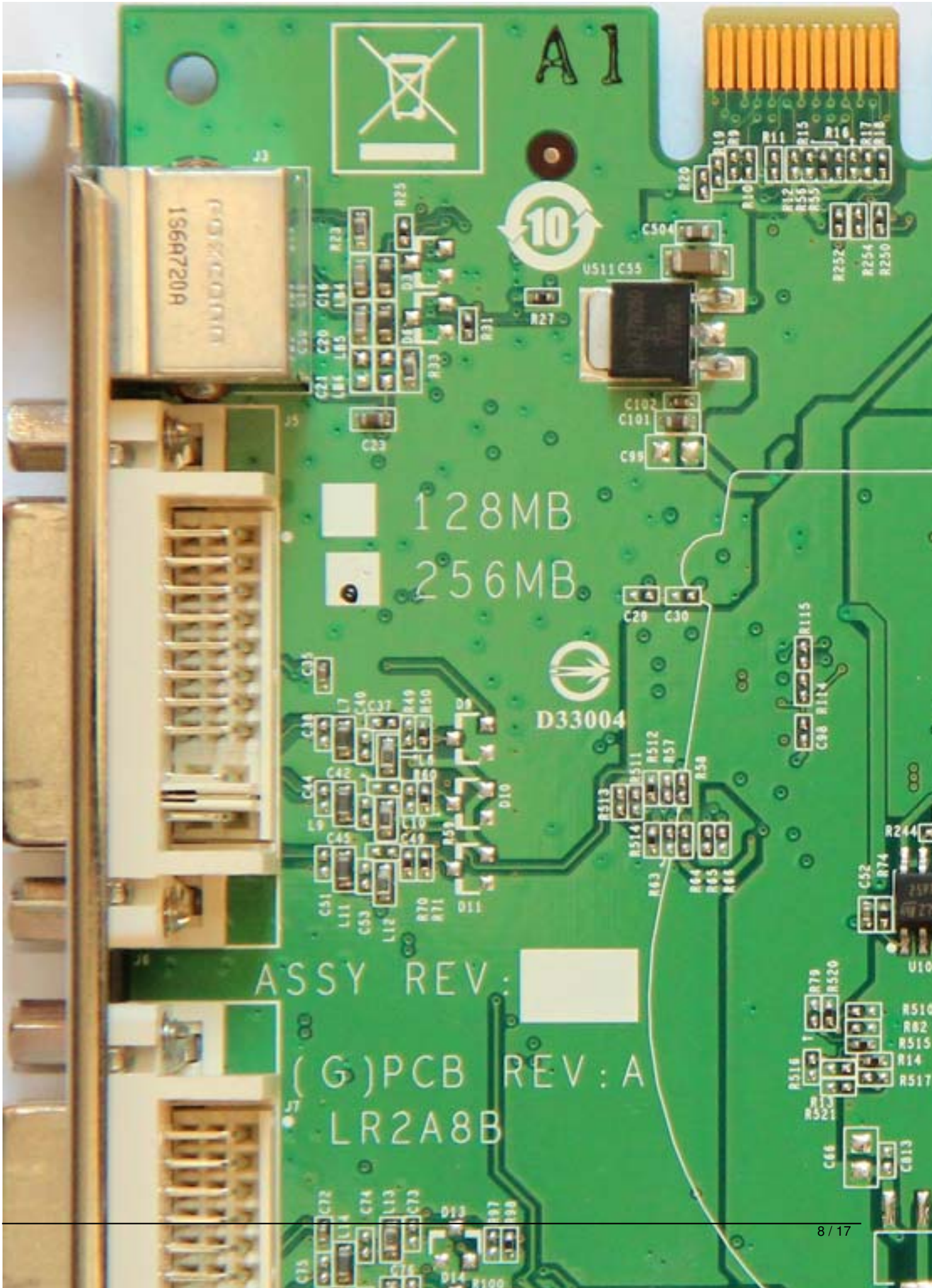
Written by Vlask

Sunday, 04 September 2011 19:27 - Last Updated Sunday, 05 May 2013 22:43

NVIDIA GeForce 8600 GT

Written by Vlask

Sunday, 04 September 2011 19:27 - Last Updated Sunday, 05 May 2013 22:43



NVIDIA GeForce 8600 GT

Written by Vlask

Sunday, 04 September 2011 19:27 - Last Updated Sunday, 05 May 2013 22:43

NVIDIA GeForce 8600 GT

Written by Vlask

Sunday, 04 September 2011 19:27 - Last Updated Sunday, 05 May 2013 22:43



NVIDIA GeForce 8600 GT

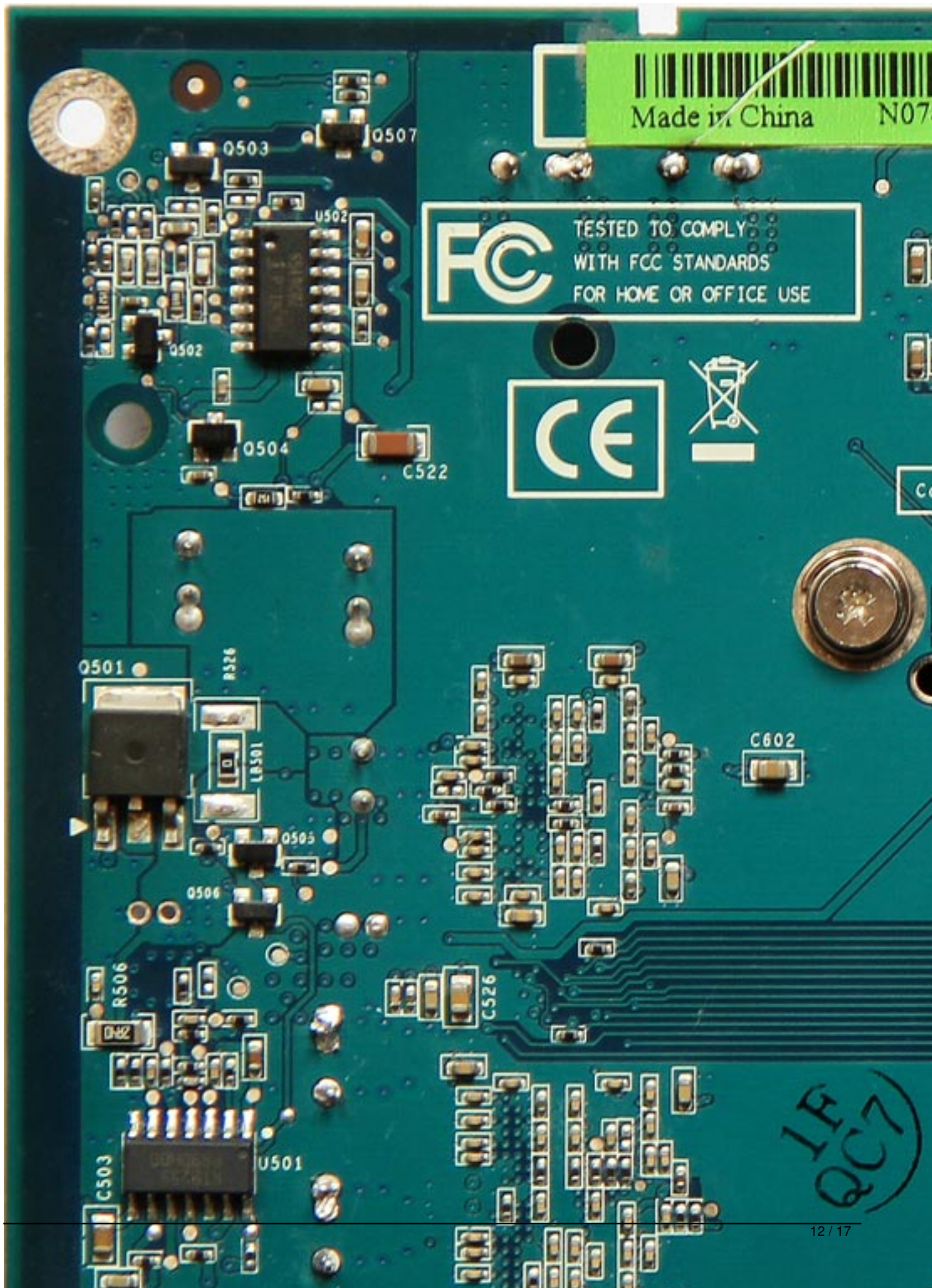
Written by Vlask

Sunday, 04 September 2011 19:27 - Last Updated Sunday, 05 May 2013 22:43

NVIDIA GeForce 8600 GT

Written by Vlask

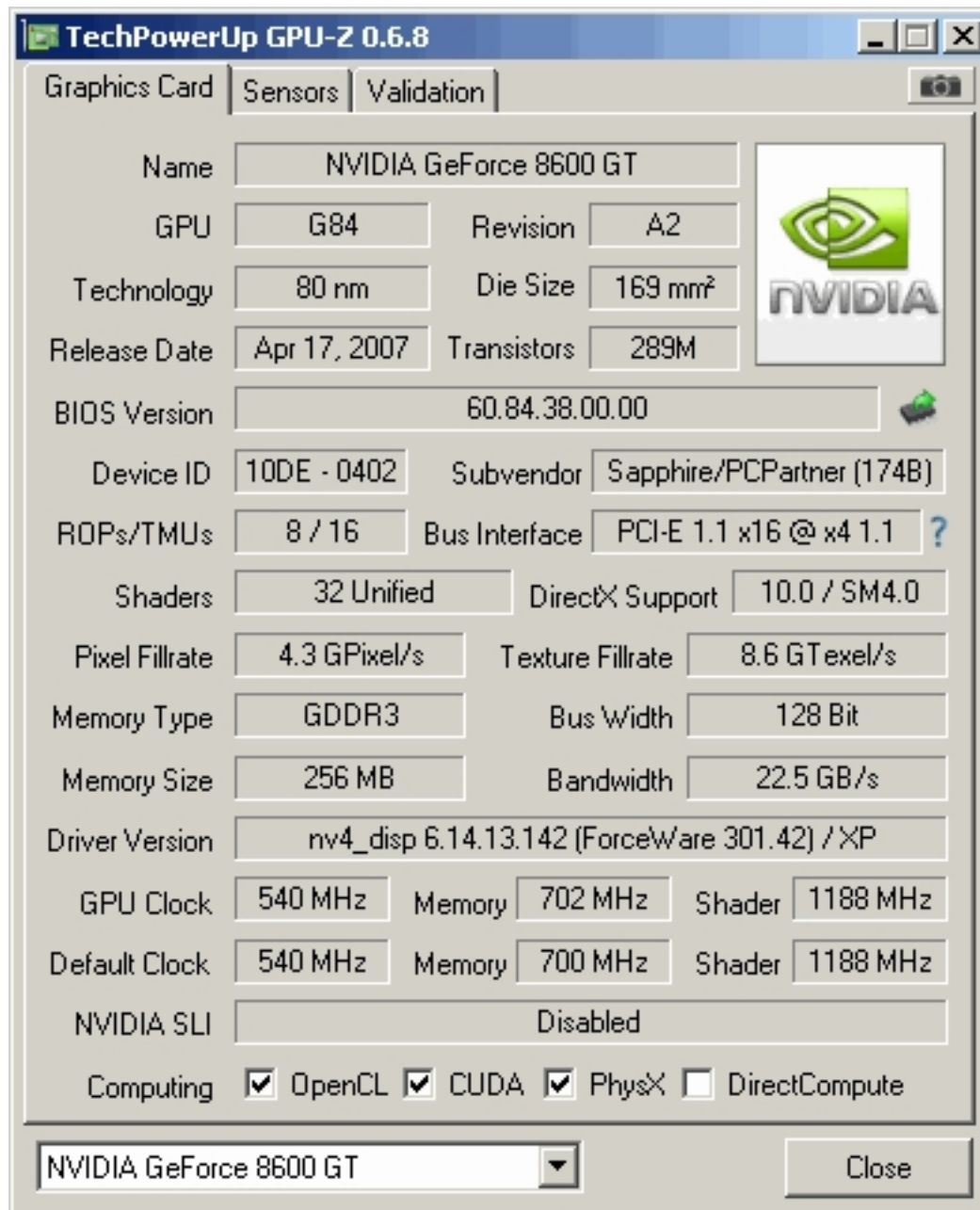
Sunday, 04 September 2011 19:27 - Last Updated Sunday, 05 May 2013 22:43



NVIDIA GeForce 8600 GT

Written by Vlask

Sunday, 04 September 2011 19:27 - Last Updated Sunday, 05 May 2013 22:43



The screenshot displays the TechPowerUp GPU-Z 0.6.8 application window. The 'Graphics Card' tab is selected, showing the following specifications:

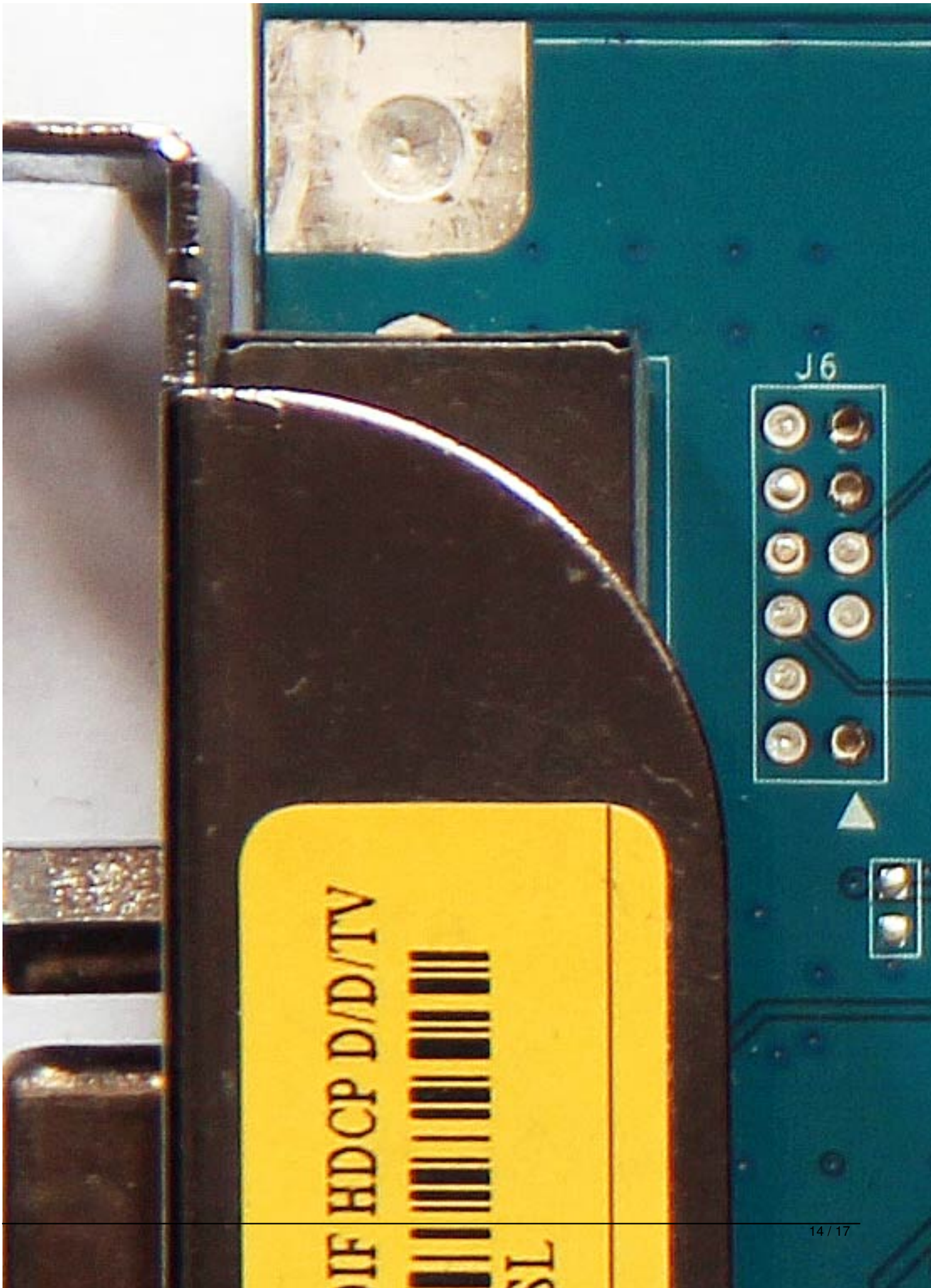
Field	Value
Name	NVIDIA GeForce 8600 GT
GPU	G84
Revision	A2
Technology	80 nm
Die Size	169 mm ²
Release Date	Apr 17, 2007
Transistors	289M
BIOS Version	60.84.38.00.00
Device ID	10DE - 0402
Subvendor	Sapphire/PCPartner (174B)
ROPs/TMUs	8 / 16
Bus Interface	PCI-E 1.1 x16 @ x4 1.1
Shaders	32 Unified
DirectX Support	10.0 / SM4.0
Pixel Fillrate	4.3 GPixel/s
Texture Fillrate	8.6 GTexel/s
Memory Type	GDDR3
Bus Width	128 Bit
Memory Size	256 MB
Bandwidth	22.5 GB/s
Driver Version	nv4_disp 6.14.13.142 (ForceWare 301.42) / XP
GPU Clock	540 MHz
Memory	702 MHz
Shader	1188 MHz
Default Clock	540 MHz
Memory	700 MHz
Shader	1188 MHz
NVIDIA SLI	Disabled
Computing	<input checked="" type="checkbox"/> OpenCL <input checked="" type="checkbox"/> CUDA <input checked="" type="checkbox"/> PhysX <input type="checkbox"/> DirectCompute

At the bottom of the window, there is a dropdown menu showing 'NVIDIA GeForce 8600 GT' and a 'Close' button.

NVIDIA GeForce 8600 GT

Written by Vlask

Sunday, 04 September 2011 19:27 - Last Updated Sunday, 05 May 2013 22:43



NVIDIA GeForce 8600 GT

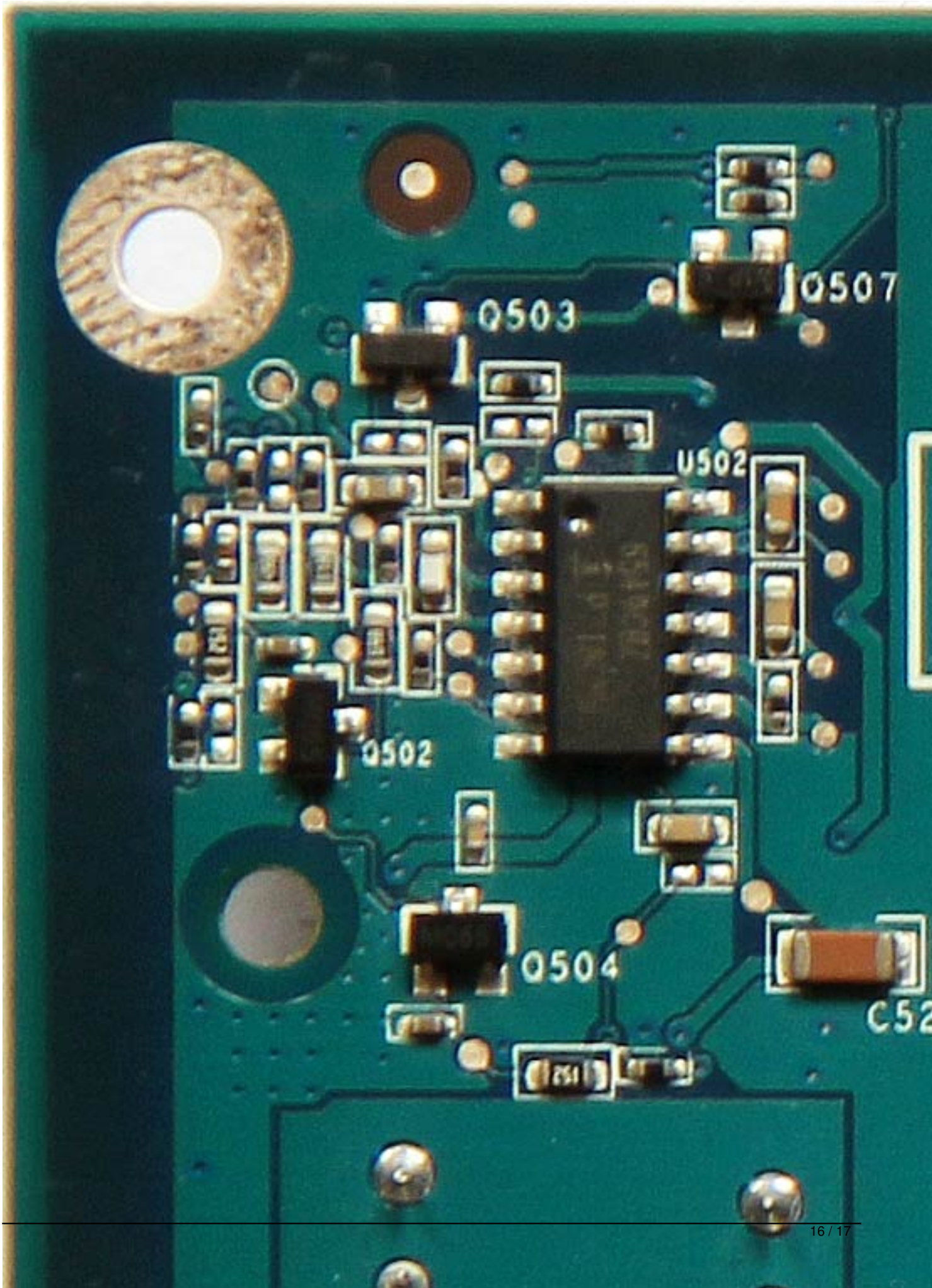
Written by Vlask

Sunday, 04 September 2011 19:27 - Last Updated Sunday, 05 May 2013 22:43

NVIDIA GeForce 8600 GT

Written by Vlask

Sunday, 04 September 2011 19:27 - Last Updated Sunday, 05 May 2013 22:43



NVIDIA GeForce 8600 GT

Written by Vlask

Sunday, 04 September 2011 19:27 - Last Updated Sunday, 05 May 2013 22:43

{/webgallery}