

## Intergraph Intense3D Wildcat 4110 VIO (MSMT664)

Written by Vlask

Thursday, 05 April 2012 19:31 - Last Updated Sunday, 15 July 2012 13:56

---



**Core:** Chips B69000 (2D) + Wildcat 4110 ?MHz ?bit

**Memory:** 64MB SDR 128bit FrameBuffer + 64MB SDR 64bit Texture memory + 8MB 64bit DirectBurst + 2MB for Dos

**Year:** 1999 **Bus:** AGP Pro (2x mode)

**Made:** ?  $\mu\text{m}$  **Links:** [Press](#) [manual](#) [OpenGL](#)

**Bios:** [here](#)

{webgallery}



# Intergraph Intense3D Wildcat 4110 VIO (MSMT664)

Written by Vlask

Thursday, 05 April 2012 19:31 - Last Updated Sunday, 15 July 2012 13:56

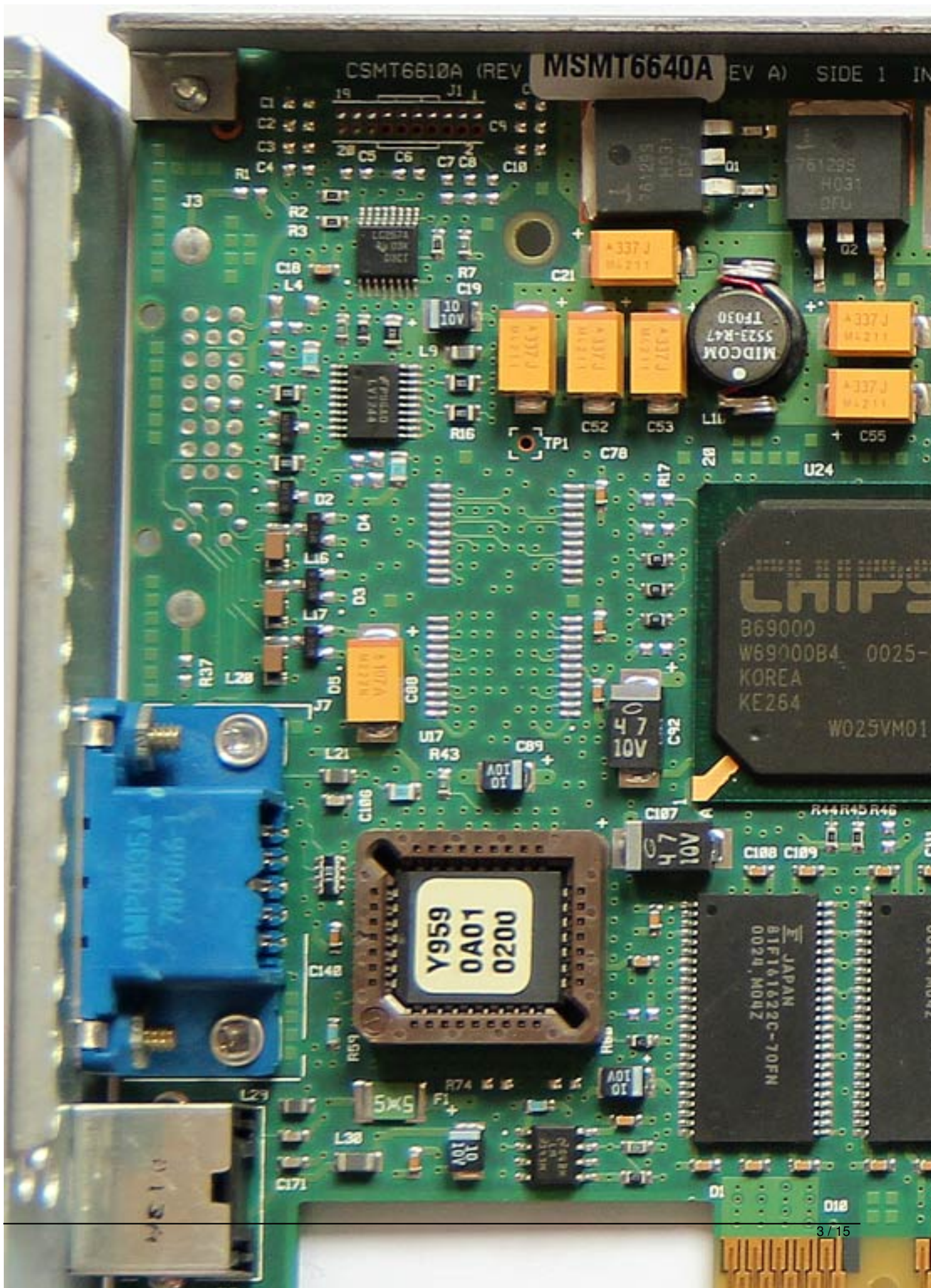
---



# Intergraph Intense3D Wildcat 4110 VIO (MSMT664)

Written by Vlask

Thursday, 05 April 2012 19:31 - Last Updated Sunday, 15 July 2012 13:56



# Intergraph Intense3D Wildcat 4110 VIO (MSMT664)

Written by Vlask

Thursday, 05 April 2012 19:31 - Last Updated Sunday, 15 July 2012 13:56

---

# Intergraph Intense3D Wildcat 4110 VIO (MSMT664)

Written by Vlask

Thursday, 05 April 2012 19:31 - Last Updated Sunday, 15 July 2012 13:56

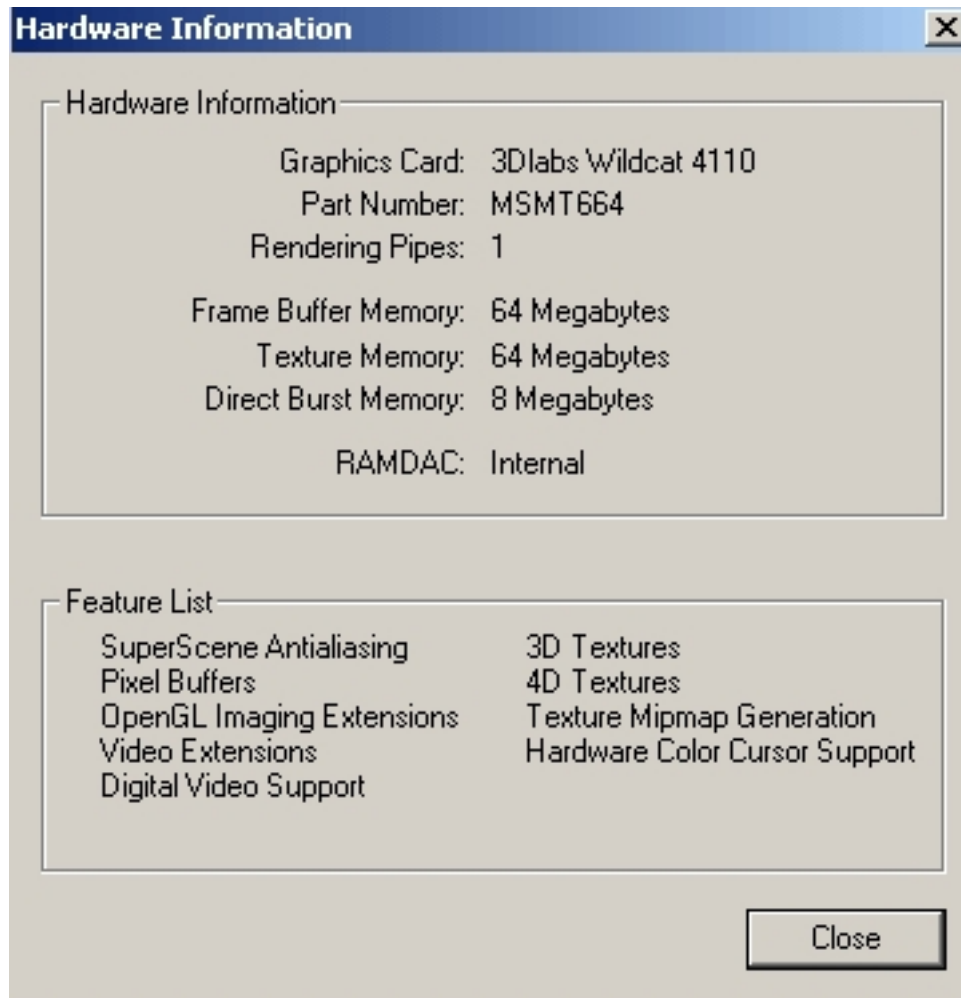


## Intergraph Intense3D Wildcat 4110 VIO (MSMT664)

Written by Vlask

Thursday, 05 April 2012 19:31 - Last Updated Sunday, 15 July 2012 13:56

---



# Intergraph Intense3D Wildcat 4110 VIO (MSMT664)

Written by Vlask

Thursday, 05 April 2012 19:31 - Last Updated Sunday, 15 July 2012 13:56

**Color Calibration** [?] [X]

Gamma Selection  
User Defined (Controlled Below) ▾

Gang

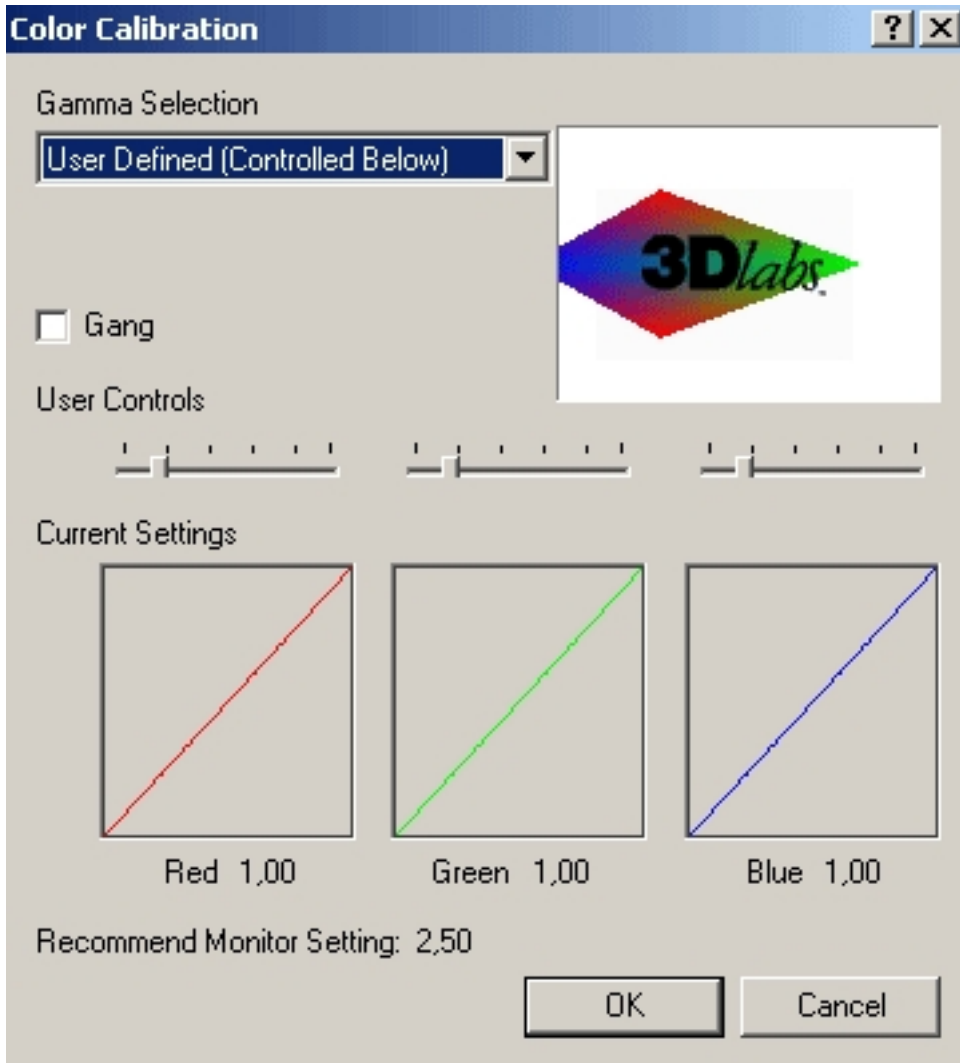
User Controls

Current Settings

Red 1,00      Green 1,00      Blue 1,00

Recommend Monitor Setting: 2,50

OK      Cancel



The image shows a 'Color Calibration' dialog box. At the top, there is a title bar with a question mark and a close button. Below the title bar, the 'Gamma Selection' section has a dropdown menu set to 'User Defined (Controlled Below)'. To the right of this is a preview window showing a diamond-shaped color calibration target with the text '3Dlabs' in the center. Below the preview is a 'Gang' checkbox, which is currently unchecked. The 'User Controls' section contains three horizontal sliders, each with a small white knob, representing gamma controls for the red, green, and blue channels. The 'Current Settings' section displays three square plots: a red plot labeled 'Red 1,00', a green plot labeled 'Green 1,00', and a blue plot labeled 'Blue 1,00'. Each plot shows a diagonal line from the bottom-left to the top-right. At the bottom, there is a text label 'Recommend Monitor Setting: 2,50' and two buttons: 'OK' and 'Cancel'.

## Intergraph Intense3D Wildcat 4110 VIO (MSMT664)

Written by Vlask

Thursday, 05 April 2012 19:31 - Last Updated Sunday, 15 July 2012 13:56

---

Správa barev

Wildcat Configuration

Wildcat Monitor

The logo for Wildcat, featuring the word "Wildcat" in a stylized, orange and yellow font with a flame-like effect.

NOTICE: Configuration Settings are based on the last "applied" Desktop Area resolution of the monitor with the highest resolution:

800 x 600 x 60Hz

If this is not the desired Desktop Area, "apply" the desired Desktop Area before continuing with the Configuration Settings.

The Wildcat Graphics Adapter is optimized for:

Default 128 Plane Settings

Any conflicts with the current settings are shown below:

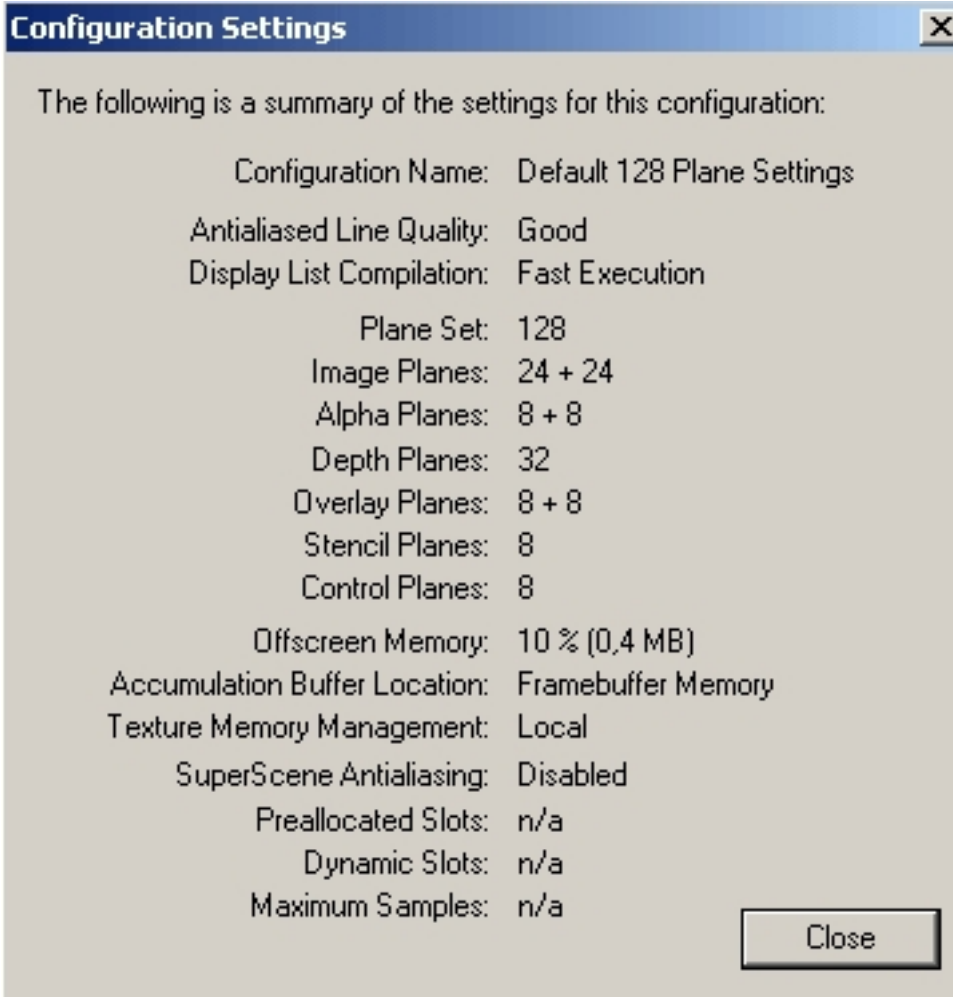
Synchronize Buffer Swap to Vertical Sync

Hardware Info

View Config

Config Wizard






## Intergraph Intense3D Wildcat 4110 VIO (MSMT664)

Written by Vlask

Thursday, 05 April 2012 19:31 - Last Updated Sunday, 15 July 2012 13:56

---

Správa barevWildcat ConfigurationWildcat Monitor



Current Monitor Selection: DDC Monitor

Plug and Play Information: Detected - Analog Monitor

Manufacturer: Sony

Model Number: CPD-G200P

Available Resolutions

- 1280x1024, High Color, 75 Hertz
- 1280x1024, High Color, 85 Hertz
- 1600x1200, High Color, 75 Hertz
- 640x480, True Color, 60 Hertz
- 640x480, True Color, 75 Hertz
- 640x480, True Color, 85 Hertz
- 800x600, True Color, 60 Hertz

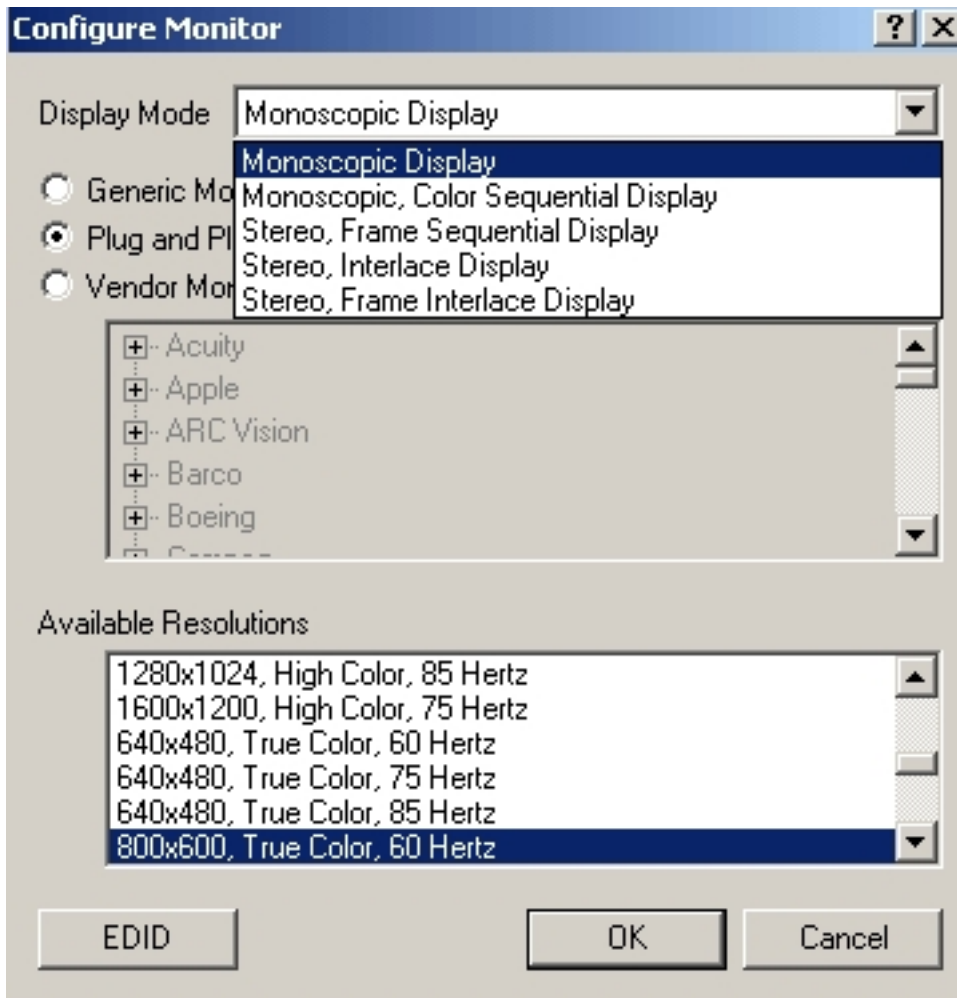
MultiviewColor CalibrationConfigure Monitor

Apply Gamma Color Calibration to 3D Windows Only

# Intergraph Intense3D Wildcat 4110 VIO (MSMT664)

Written by Vlask

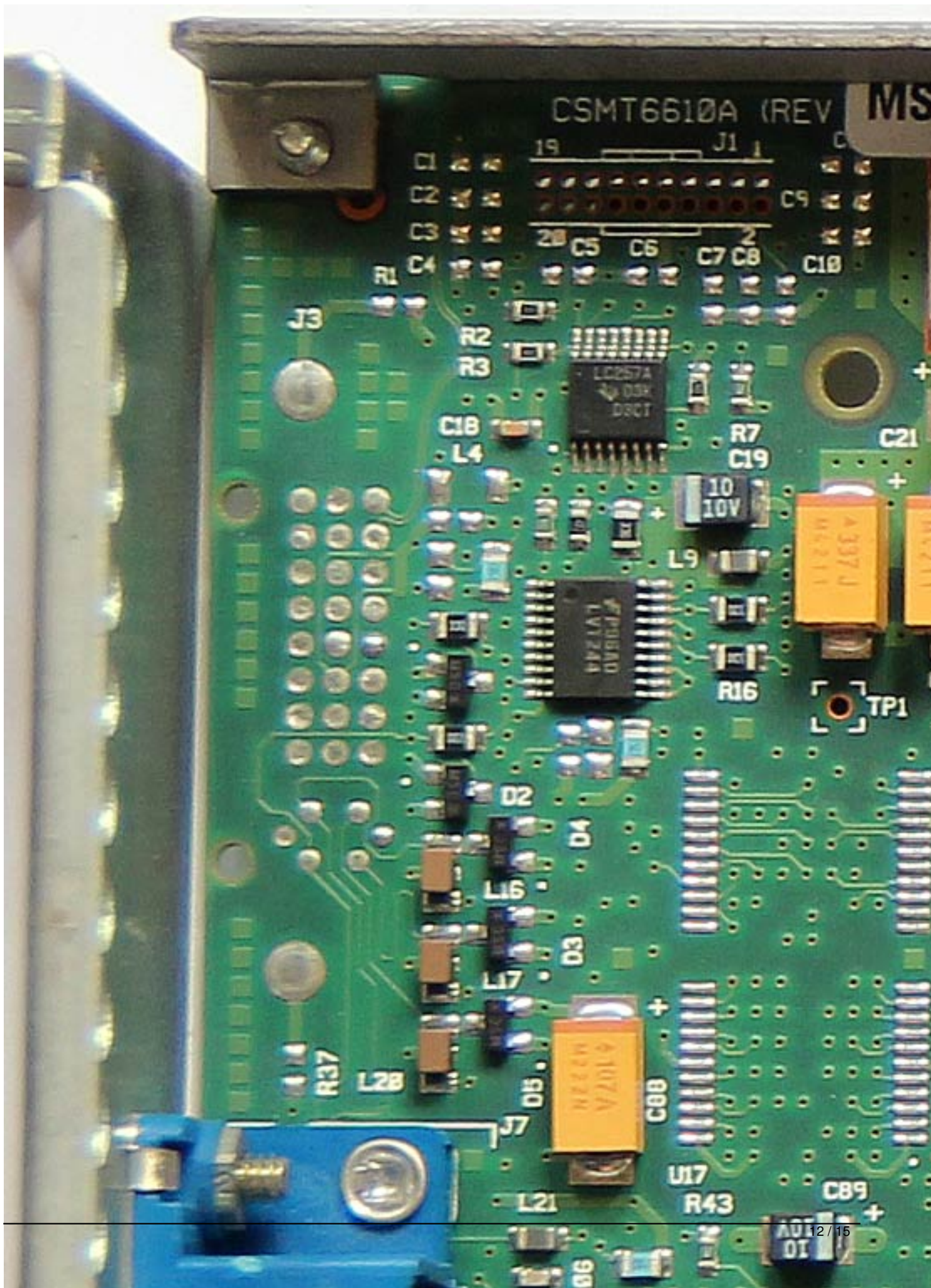
Thursday, 05 April 2012 19:31 - Last Updated Sunday, 15 July 2012 13:56



# Intergraph Intense3D Wildcat 4110 VIO (MSMT664)

Written by Vlask

Thursday, 05 April 2012 19:31 - Last Updated Sunday, 15 July 2012 13:56



# Intergraph Intense3D Wildcat 4110 VIO (MSMT664)

Written by Vlask

Thursday, 05 April 2012 19:31 - Last Updated Sunday, 15 July 2012 13:56

---

Intergraph Intense3D Wildcat 4110 VIO (MSMT664)

Written by Vlask

Thursday, 05 April 2012 19:31 - Last Updated Sunday, 15 July 2012 13:56

---



## Intergraph Intense3D Wildcat 4110 VIO (MSMT664)

Written by Vlask

Thursday, 05 April 2012 19:31 - Last Updated Sunday, 15 July 2012 13:56

---

{/webgallery}