

Accel Graphics Eclipse

Written by Vlask

Saturday, 24 October 2009 14:29 - Last Updated Monday, 21 April 2014 12:57



Core: Mitsubishi 3DPro/2mp ?MHz ?bit

Memory: 15MB 3D-RAM FrameBuffer + 16MB CDRAM Texture Memory ?MHz ?bit

Year: 1997 **Bus:** PCI / AGP 1x

Made: Japan **Links:** [Press](#) [Press](#) [Press](#) [Benchmark \(Russian\)](#)

Bios: [AGP version](#) [PCI](#)

OpenGL: [report](#)

{webgallery}



Accel Graphics Eclipse

Written by Vlask

Saturday, 24 October 2009 14:29 - Last Updated Monday, 21 April 2014 12:57



Accel Graphics Eclipse

Written by Vlask

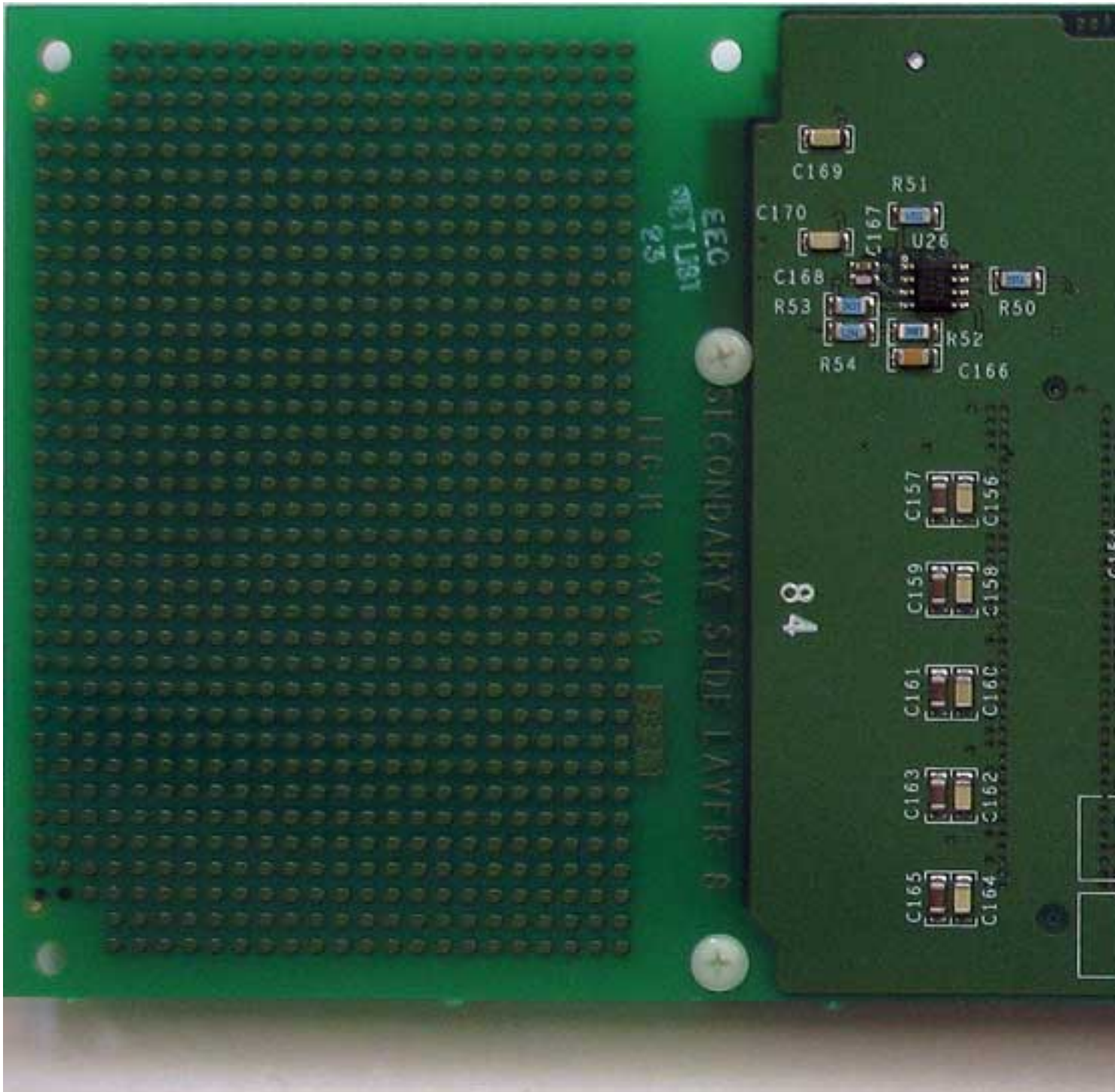
Saturday, 24 October 2009 14:29 - Last Updated Monday, 21 April 2014 12:57



Accel Graphics Eclipse

Written by Vlask

Saturday, 24 October 2009 14:29 - Last Updated Monday, 21 April 2014 12:57



Accel Graphics Eclipse

Written by Vlask

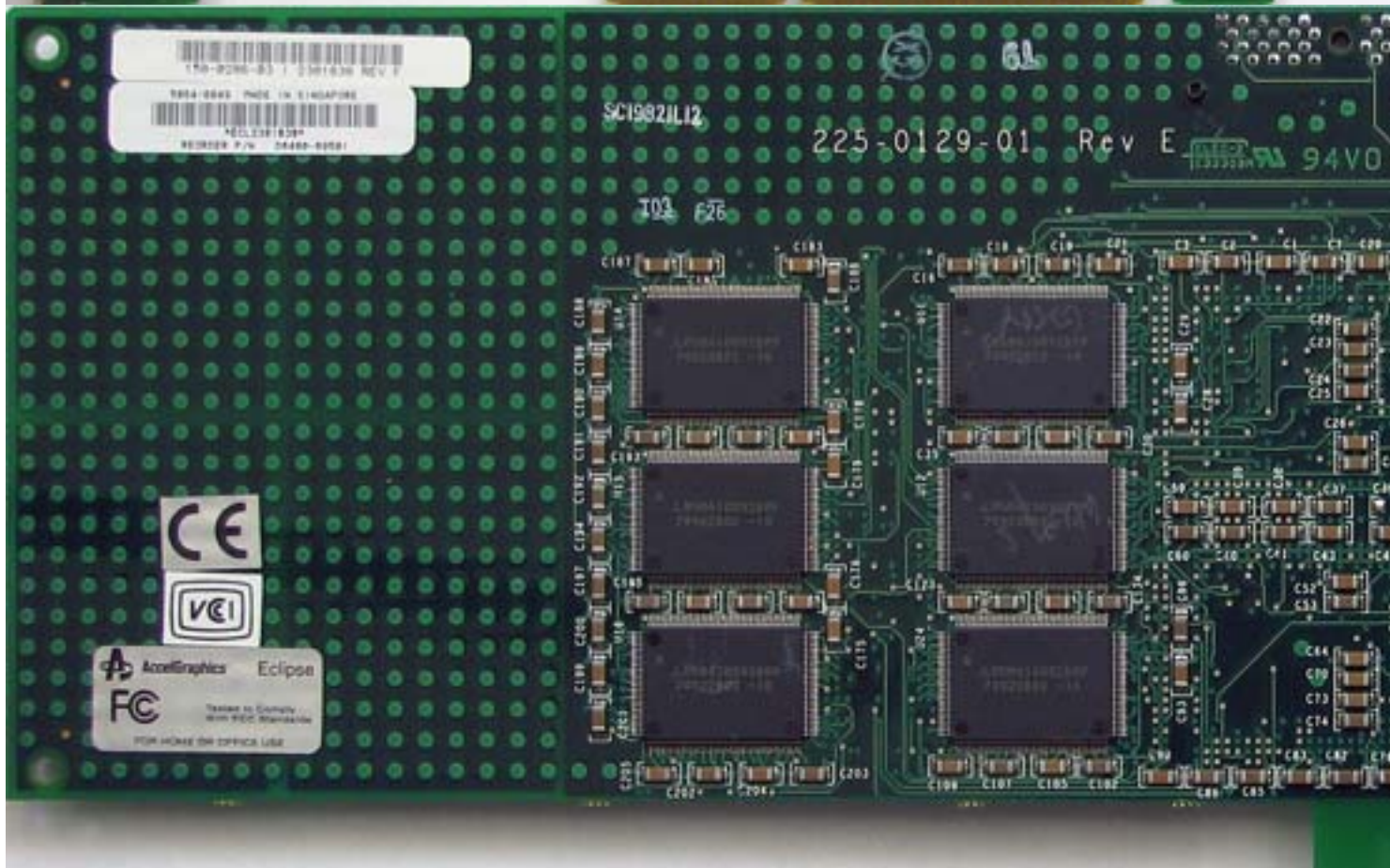
Saturday, 24 October 2009 14:29 - Last Updated Monday, 21 April 2014 12:57



Accel Graphics Eclipse

Written by Vlask

Saturday, 24 October 2009 14:29 - Last Updated Monday, 21 April 2014 12:57



Accel Graphics Eclipse

Written by Vlask

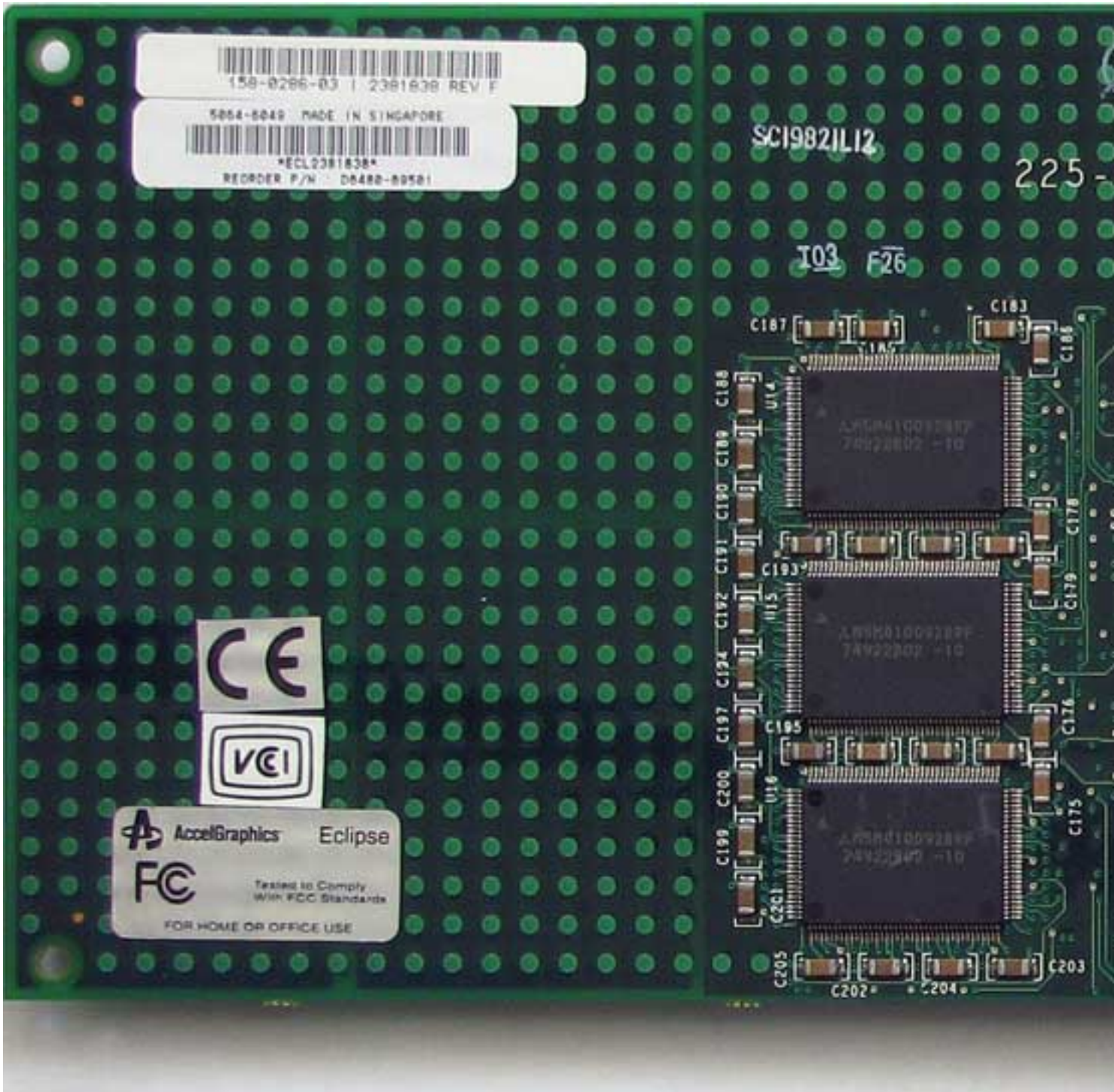
Saturday, 24 October 2009 14:29 - Last Updated Monday, 21 April 2014 12:57



Accel Graphics Eclipse

Written by Vlask

Saturday, 24 October 2009 14:29 - Last Updated Monday, 21 April 2014 12:57



Accel Graphics Eclipse

Written by Vlask

Saturday, 24 October 2009 14:29 - Last Updated Monday, 21 April 2014 12:57



Accel Graphics Eclipse

Written by Vlask

Saturday, 24 October 2009 14:29 - Last Updated Monday, 21 April 2014 12:57

Accel Graphics Eclipse

Written by Vlask

Saturday, 24 October 2009 14:29 - Last Updated Monday, 21 April 2014 12:57



159-0286-03 | 2381838 REV F

5064-8049 MADE IN SINGAPORE



ECL2381838

REORDER P/N : 05480-89501



AccelGraphics

Eclipse



Tested to Comply
With FCC Standards

FOR HOME OR OFFICE USE

Accel Graphics Eclipse

Written by Vlask

Saturday, 24 October 2009 14:29 - Last Updated Monday, 21 April 2014 12:57

{/webgallery}