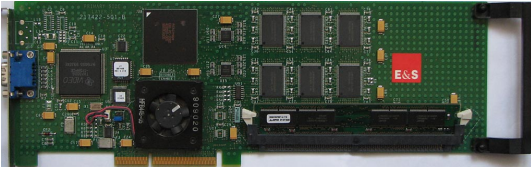


Evans & Sutherland Lightning 1200

Written by Vlask

Saturday, 24 October 2009 15:11 - Last Updated Tuesday, 27 December 2011 21:24



Core: Evans & Sutherland REALimage 1200 ?MHz ?bit
Memory: 15MB 3D-RAM FrameBuffer + 16MB CDRAM Texture memory ?MHz ?bit
Year: 1999 **Bus:** AGP 2x
Made: ? μm **Links:** [Viewperf](#) [Tom's Hardware](#) **Price:** \$699

Bios: [here](#)

OpenGL: GL_EXT_bgra, GL_EXT_rescale_normal, GL_EXT_multi_draw_arrays, GL_IBM_rescale_normal, GL_IBM_multi_draw_arrays

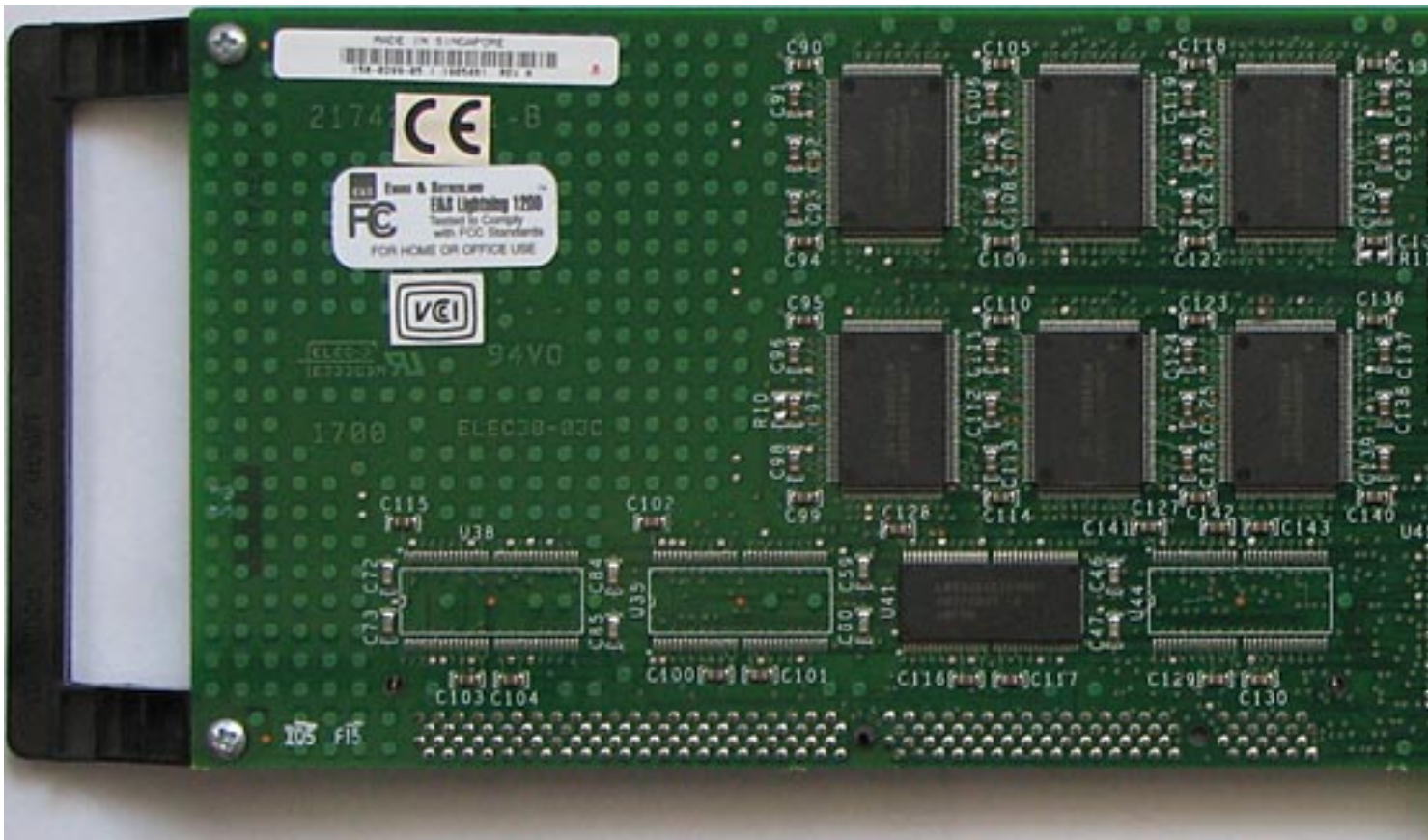
{webgallery}



Evans & Sutherland Lightning 1200

Written by Vlask

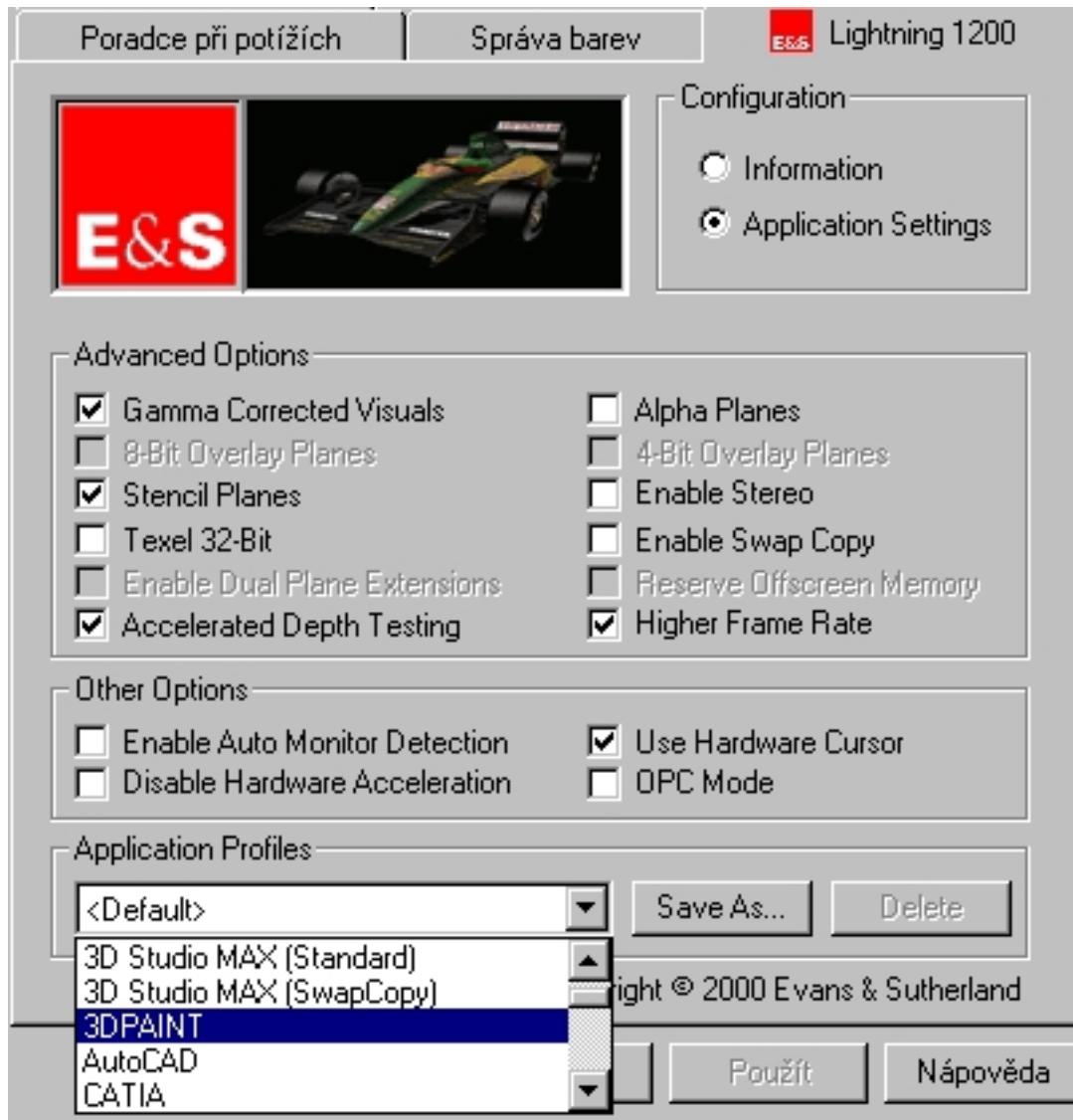
Saturday, 24 October 2009 15:11 - Last Updated Tuesday, 27 December 2011 21:24



Evans & Sutherland Lightning 1200

Written by Vlask

Saturday, 24 October 2009 15:11 - Last Updated Tuesday, 27 December 2011 21:24

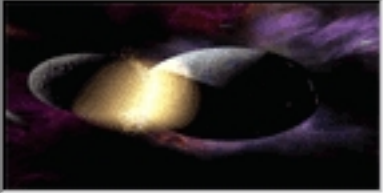


Evans & Sutherland Lightning 1200

Written by Vlask

Saturday, 24 October 2009 15:11 - Last Updated Tuesday, 27 December 2011 21:24

Poradce při potížích | **Správa barev** |  Lightning 1200



Configuration

Information

Application Settings

Hardware

Adapter:	Evans and Sutherland Lightning 1200
Memory:	15 MB Video / 16 MB Texture
Chip Type:	REALimage 1200
DAC Type:	TI 3026 (PCGA2000)

Driver

Miniport Version:	a1200.sys v3.1 (Build 0823)
Driver Version:	a12p3ogl.dll v3.1 (Build 0823)
OpenGL Version:	1.1
Resolution:	800 x 600
Pixel Depth:	32
Refresh Rate:	60

Copyright © 2000 Evans & Sutherland

{/webgallery}