

3DLabs Oxygen GMX

Written by Vlask

Thursday, 04 February 2010 11:22 - Last Updated Thursday, 25 July 2013 15:00



Core:Permedia 2v(2D) + GLINT GMX 2000 ?MHz ?bit

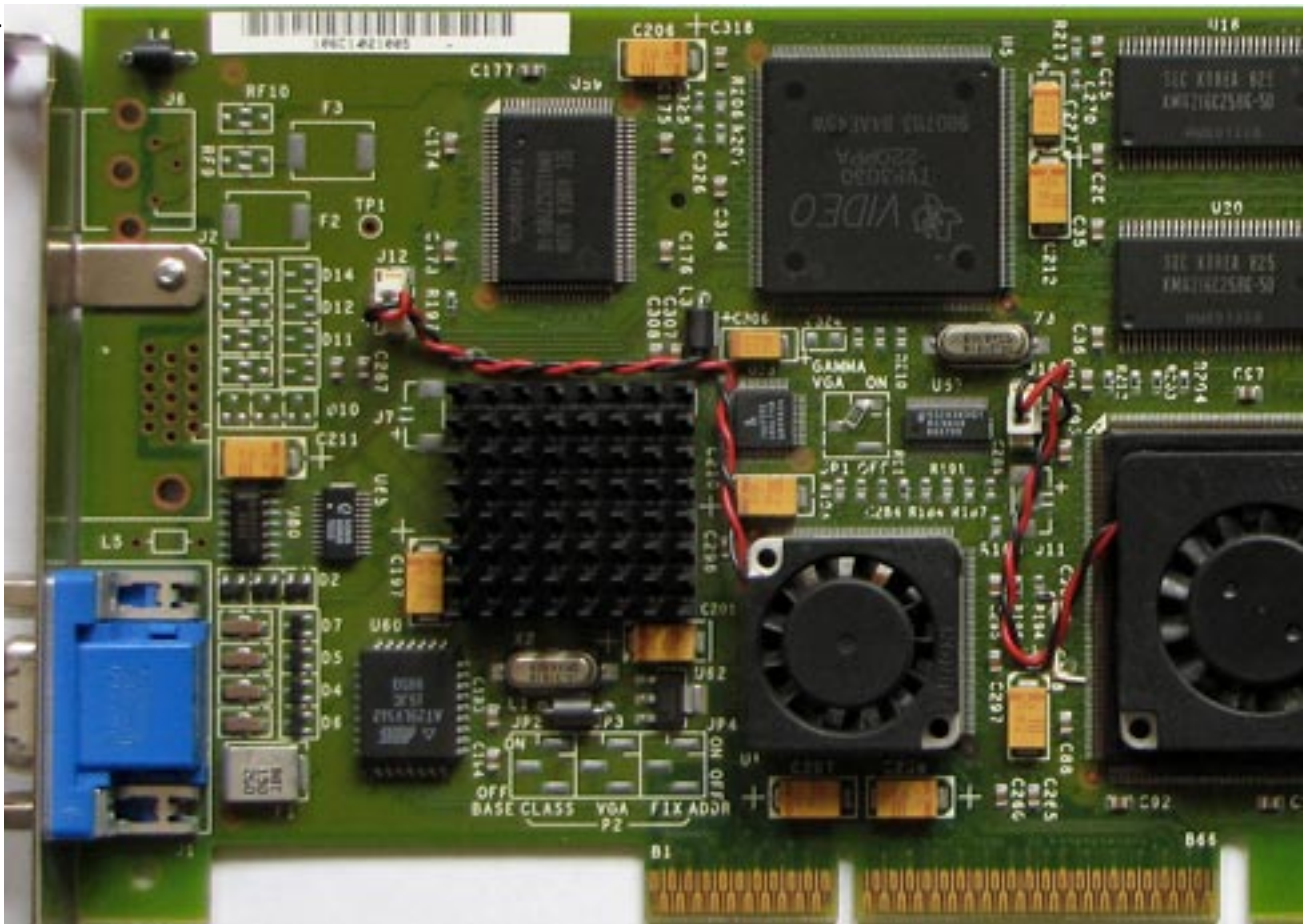
Memory: 96MB ?MHz ?bit

Year: 1998 **Bus:** AGP 2x

Made: ? **Links:** [manual](#) [Press](#) **Price:** \$2299

OpenGL: GL_EXT_vertex_array GL_EXT_bgra GL_EXT_paletted_texture
GL_EXT_texture_object GL_3DLabs_Driver_State GL_EXT_polygon_offset
GL_WIN_swap_hint GL_EXT_shared_texture_palette GL_KTX_buffer_region

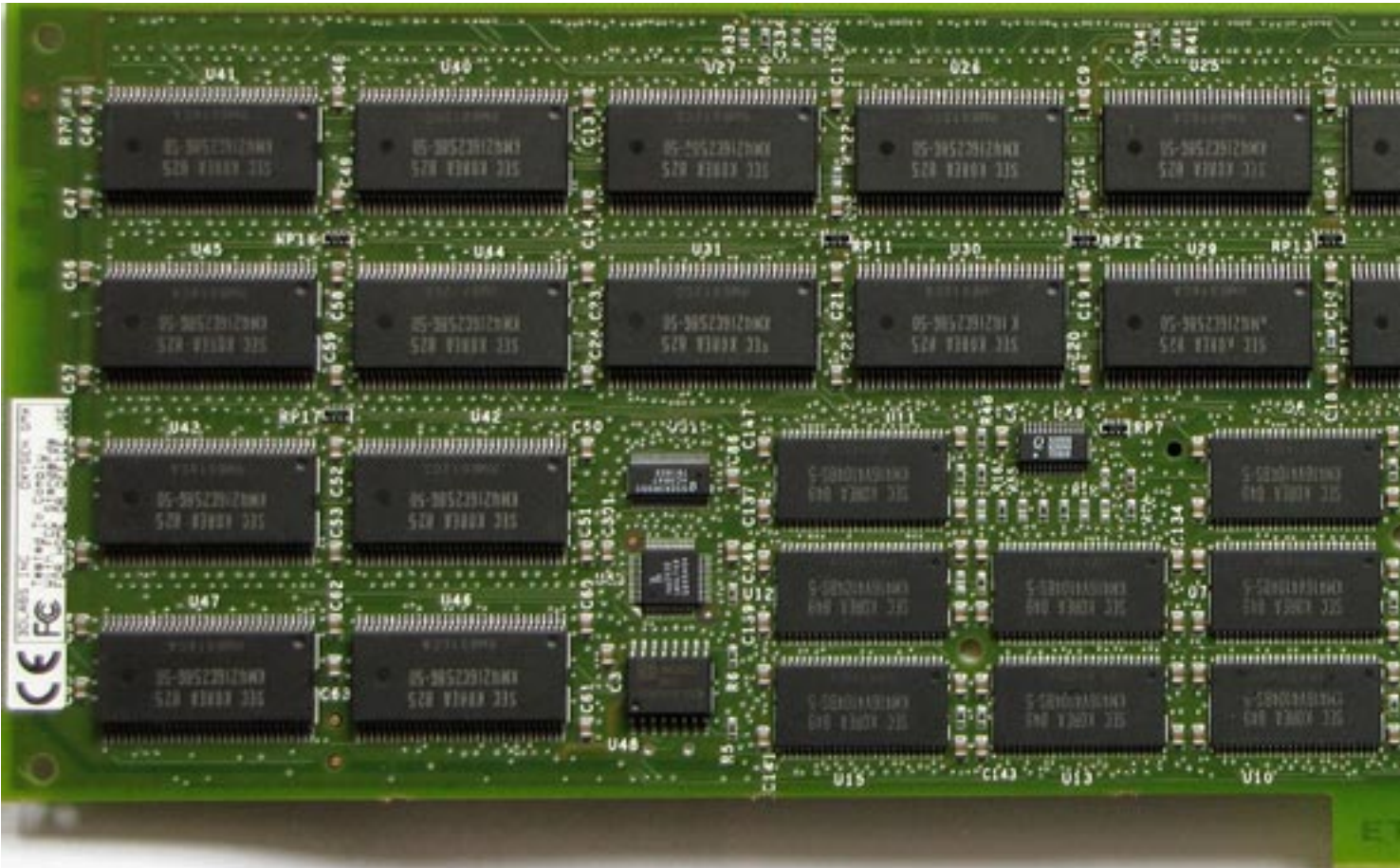
{webgallery}



3Dlabs Oxygen GMX

Written by Vlask

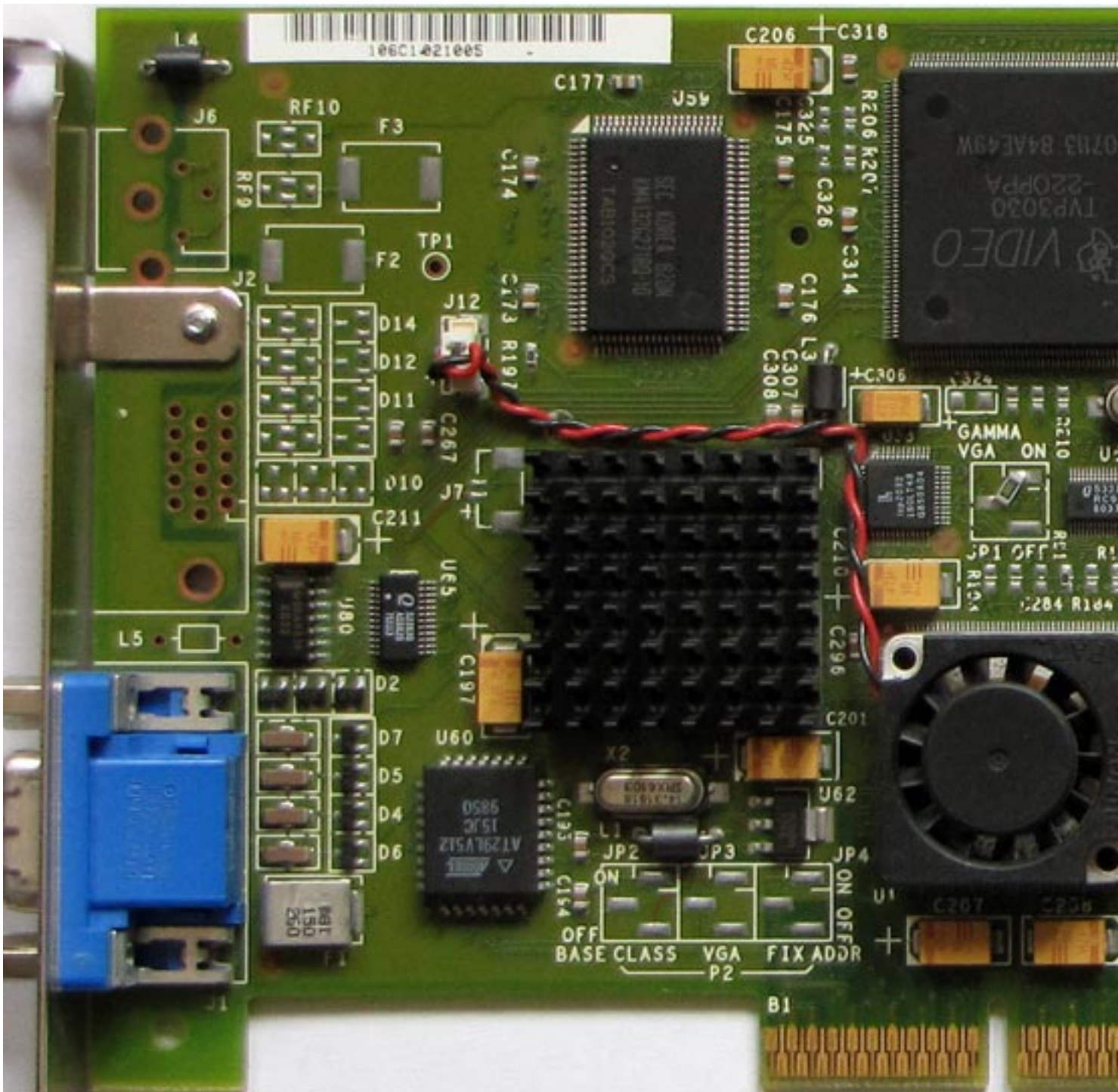
Thursday, 04 February 2010 11:22 - Last Updated Thursday, 25 July 2013 15:00



3DIabs Oxygen GMX

Written by Vlask

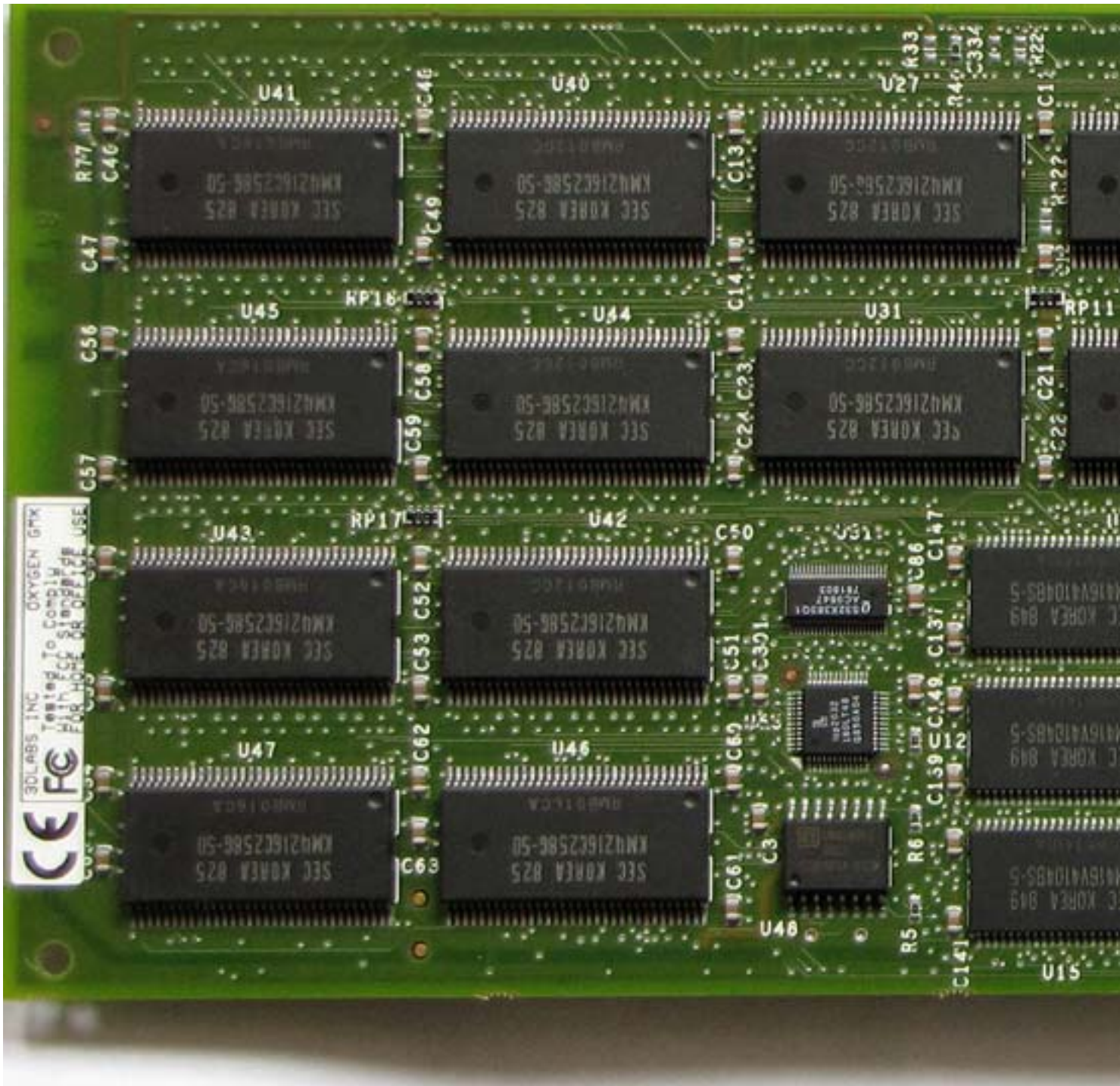
Thursday, 04 February 2010 11:22 - Last Updated Thursday, 25 July 2013 15:00



3DLabs Oxygen GMX

Written by Vlask

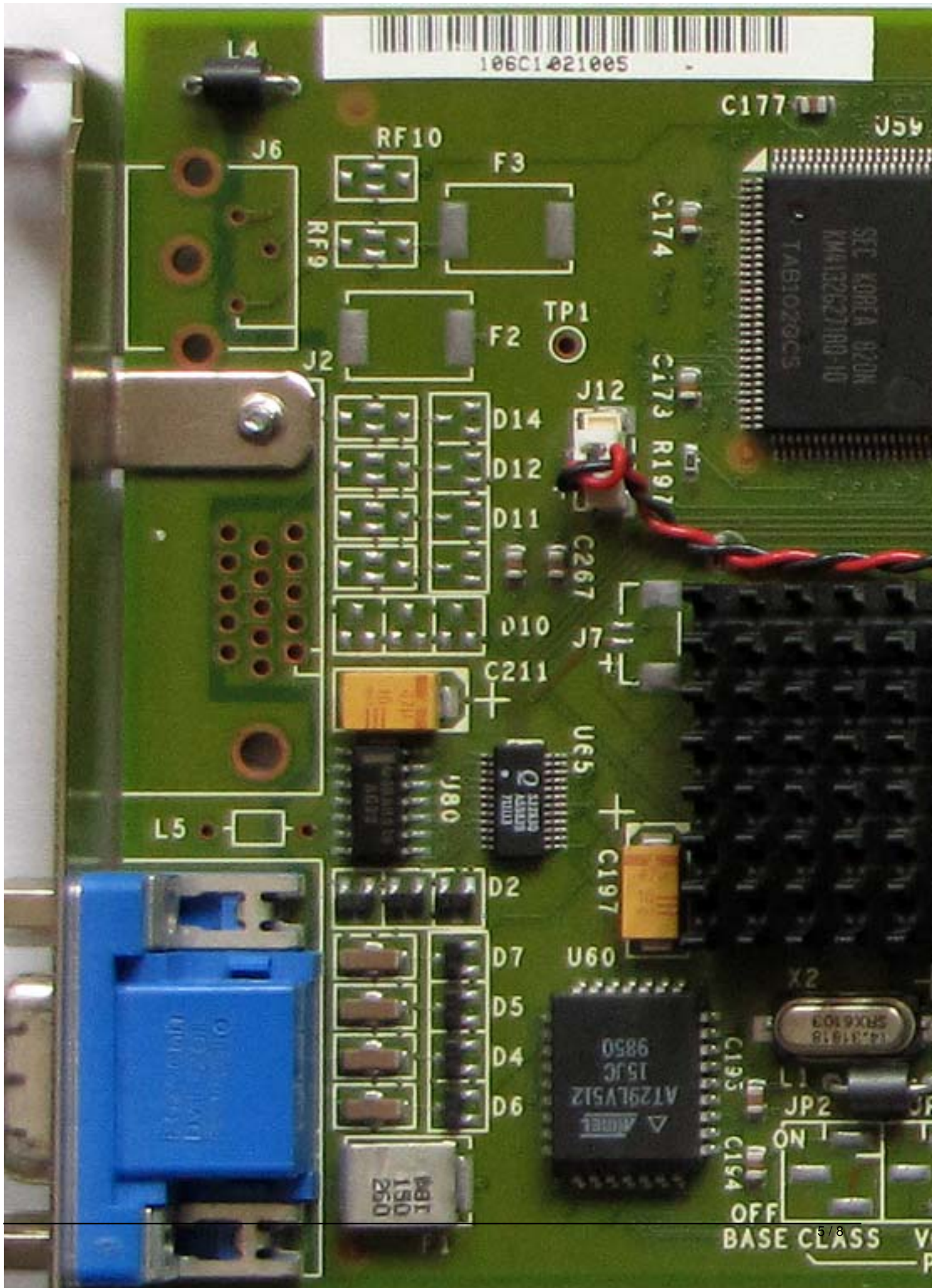
Thursday, 04 February 2010 11:22 - Last Updated Thursday, 25 July 2013 15:00



3Dlabs Oxygen GMX

Written by Vlask

Thursday, 04 February 2010 11:22 - Last Updated Thursday, 25 July 2013 15:00



3Dlabs Oxygen GMX

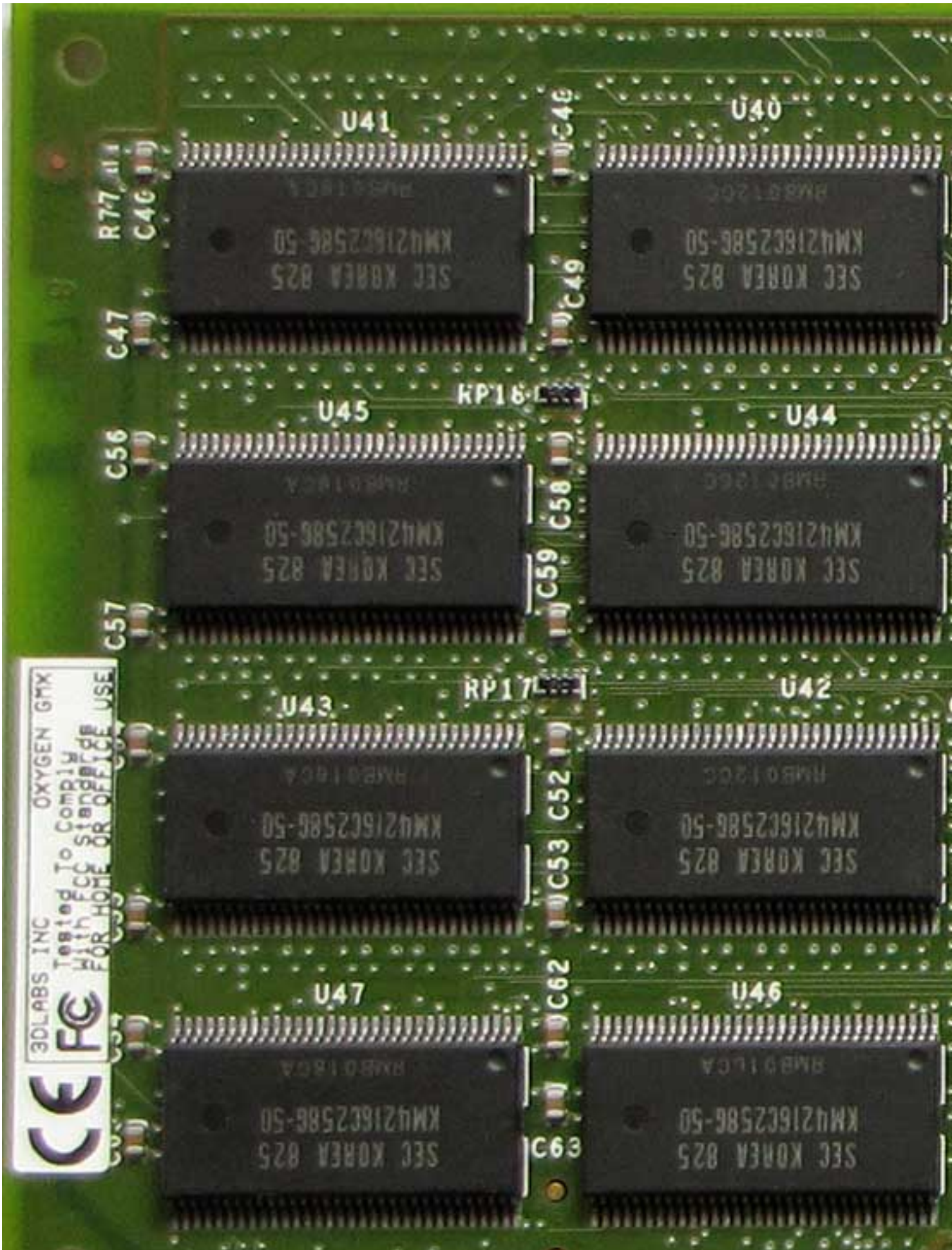
Written by Vlask

Thursday, 04 February 2010 11:22 - Last Updated Thursday, 25 July 2013 15:00

3DLabs Oxygen GMX

Written by Vlask

Thursday, 04 February 2010 11:22 - Last Updated Thursday, 25 July 2013 15:00




3Dlabs Oxygen GMX

Written by Vlask

Thursday, 04 February 2010 11:22 - Last Updated Thursday, 25 July 2013 15:00

Obecné | Adaptér | Monitor | Poradce při potížích | Správa barev | **3D** 3Dlabs



Configuration

- Information
- Setup
- OpenGL
- Monitor


Software

2D Driver Build: 2.13-0602
ICD Build: 4.10.01.2105-2.12.0767
OpenGL Release: 1.1.25

Hardware

Chip Name: 3Dlabs GMX2000
Depth/Stencil: 3072 KB
Texture Memory: 29696 KB

Obecné | Adaptér | Monitor | Poradce při potížích | Správa barev | **3D** 3Dlabs



Configuration

- Information
- Setup
- OpenGL
- Monitor

Advanced Options

Number of DMA Sub Buffers
Wait for VBlank

Application Support

- SoftImage 3D
- Pro/ENGINEER
- Pro/DESIGNER
- Unigraphics
- Catia

Overlay Support

- Default
- Maya + Alpha
- Pro/3DPAINT

{/webgallery}