

miro 20 Twin PCI

Written by Vlask

Wednesday, 11 May 2011 21:43 - Last Updated Wednesday, 11 May 2011 21:57



Core: S3 86C864-P + 86C964-P ?MHz ?bit

Memory: 2MB 2cycle EDO 0ns + 2MB VRAM ?MHz ?bit

Year: 1994 **Bus:** PCI

Made: Korea **Links:** [Jumpers](#) [Gbooks](#)

Bios: [miro](#)

Note: dualhed card, gift from T613

{webgallery}

miro 20 Twin PCI

Written by Vlask

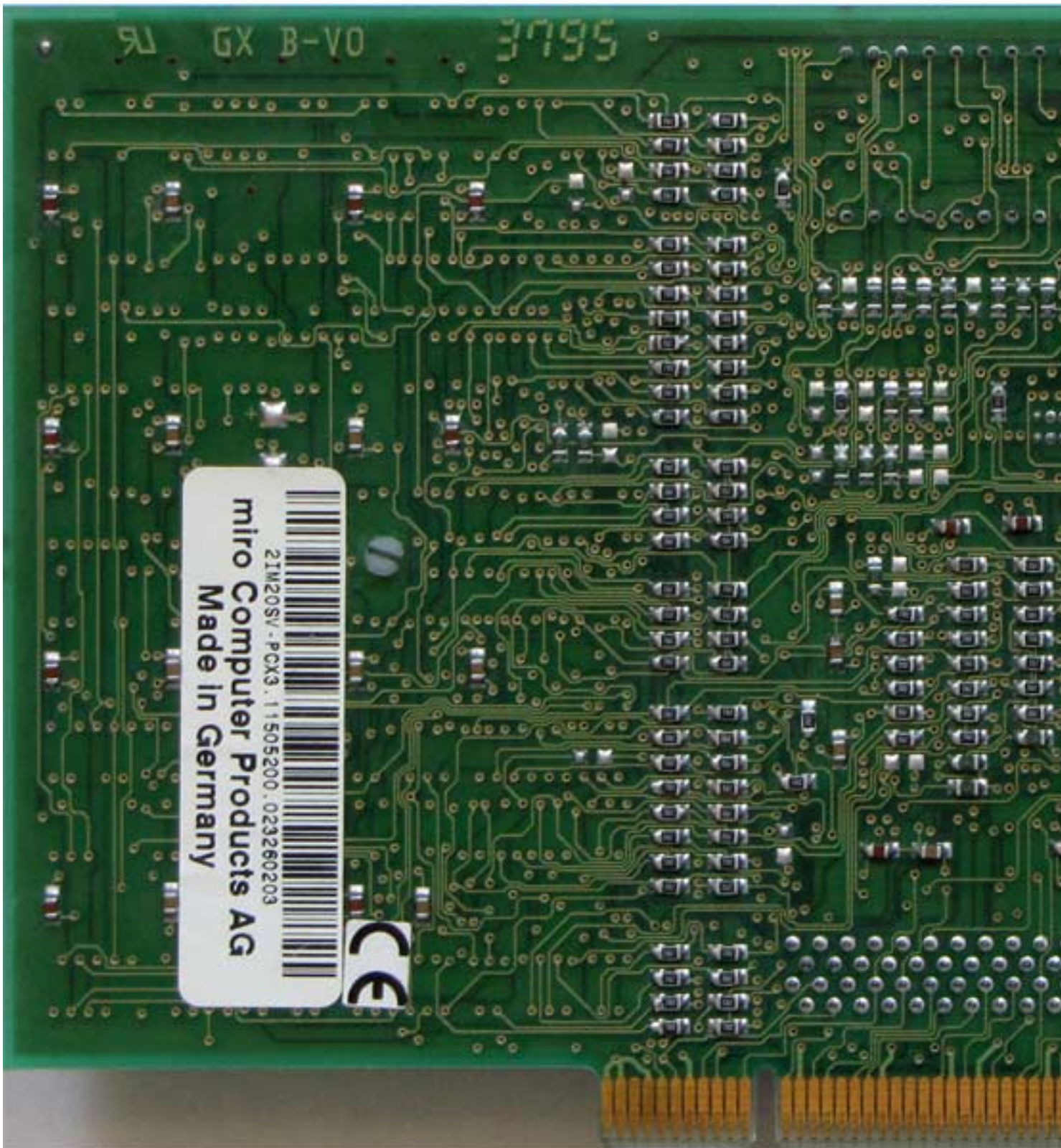
Wednesday, 11 May 2011 21:43 - Last Updated Wednesday, 11 May 2011 21:57



miro 20 Twin PCI

Written by Vlask

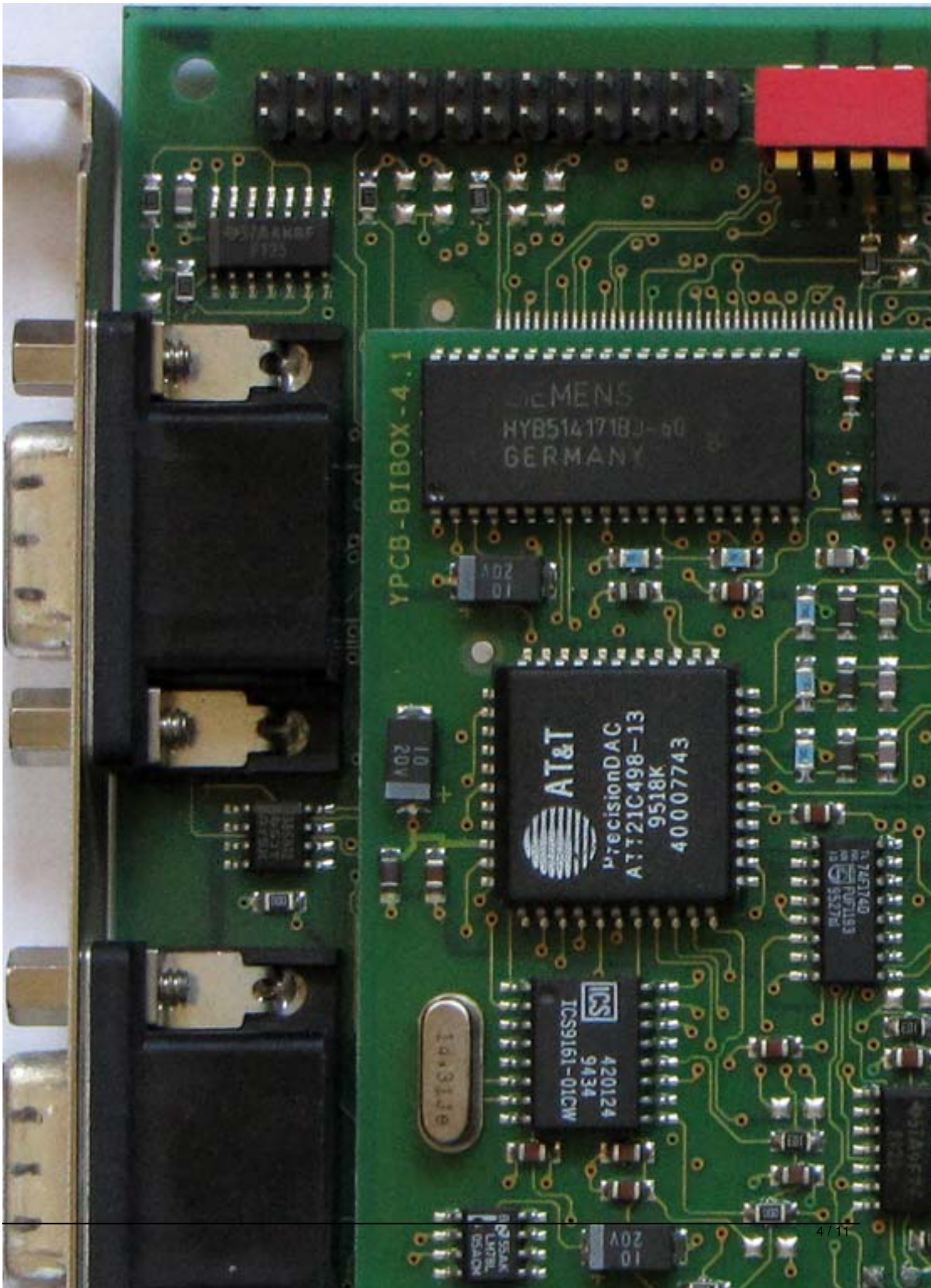
Wednesday, 11 May 2011 21:43 - Last Updated Wednesday, 11 May 2011 21:57



miro 20 Twin PCI

Written by Vlask

Wednesday, 11 May 2011 21:43 - Last Updated Wednesday, 11 May 2011 21:57



miro 20 Twin PCI

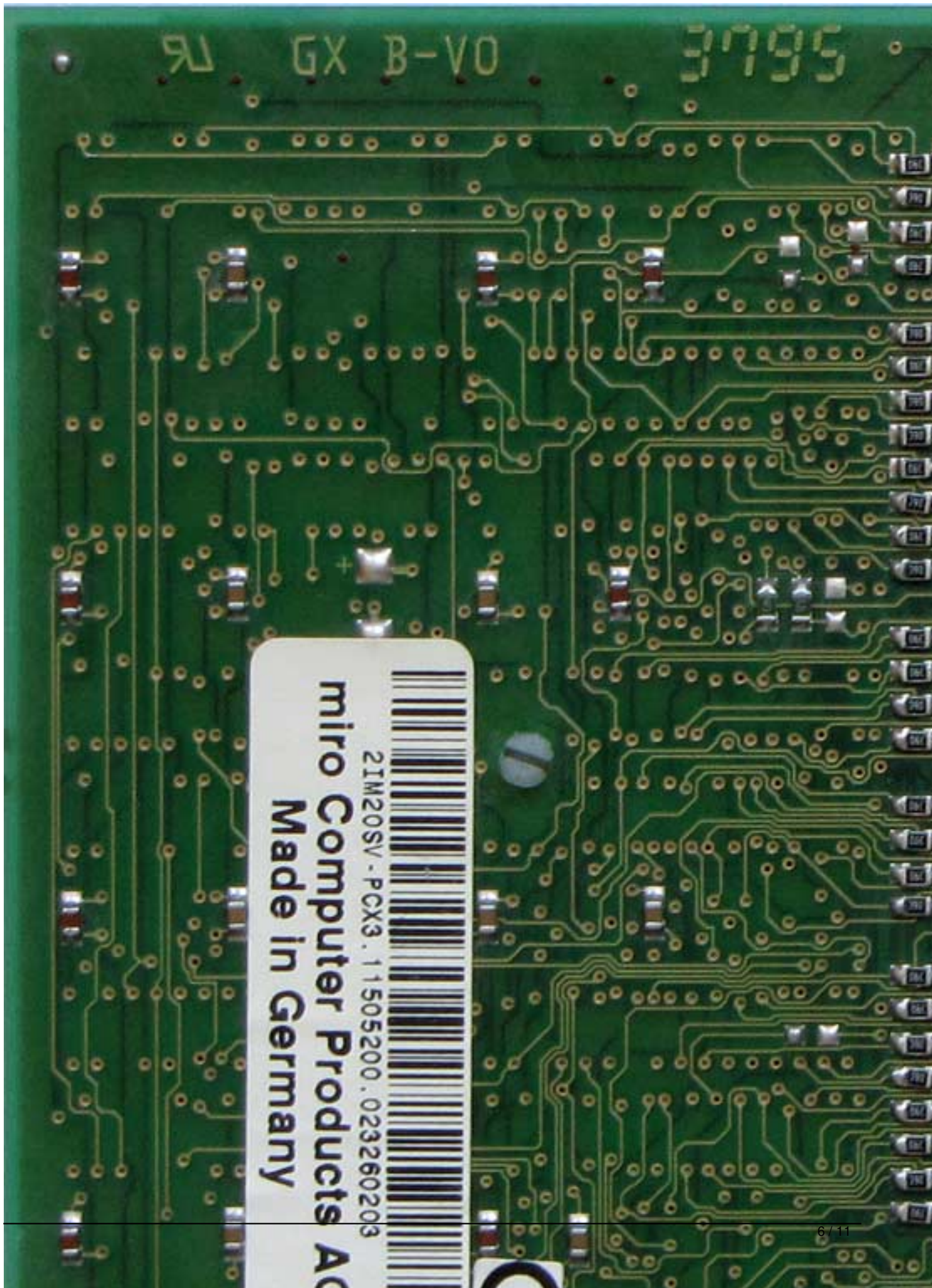
Written by Vlask

Wednesday, 11 May 2011 21:43 - Last Updated Wednesday, 11 May 2011 21:57

miro 20 Twin PCI

Written by Vlask

Wednesday, 11 May 2011 21:43 - Last Updated Wednesday, 11 May 2011 21:57



miro Computer Products AG
Made in Germany

2IM20SV-PCX3.11505200.023260203



miro 20 Twin PCI

Written by Vlask

Wednesday, 11 May 2011 21:43 - Last Updated Wednesday, 11 May 2011 21:57

miro 20 Twin PCI

Written by Vlask

Wednesday, 11 May 2011 21:43 - Last Updated Wednesday, 11 May 2011 21:57



miro 20 Twin PCI

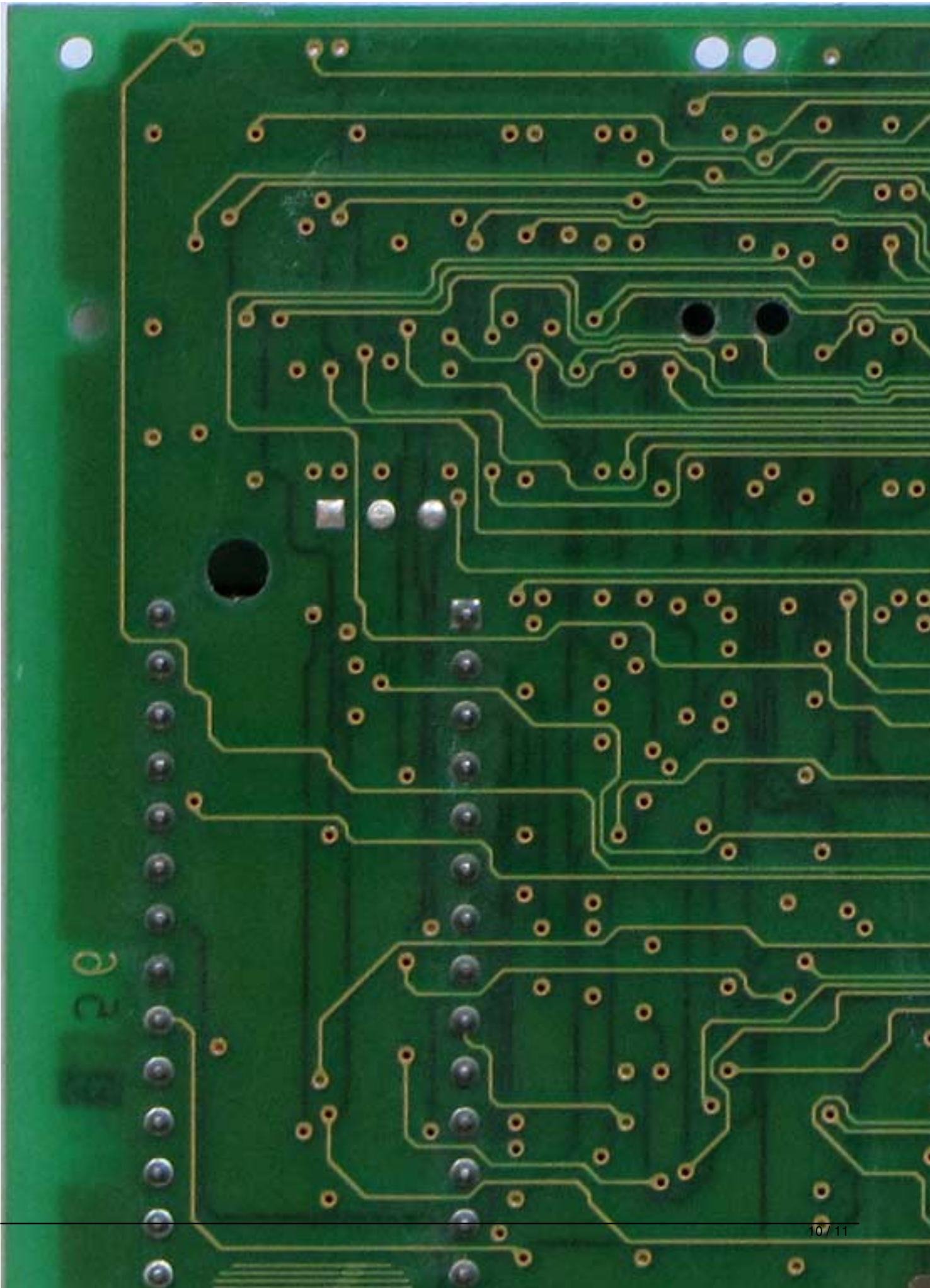
Written by Vlask

Wednesday, 11 May 2011 21:43 - Last Updated Wednesday, 11 May 2011 21:57

miro 20 Twin PCI

Written by Vlask

Wednesday, 11 May 2011 21:43 - Last Updated Wednesday, 11 May 2011 21:57



miro 20 Twin PCI

Written by Vlask

Wednesday, 11 May 2011 21:43 - Last Updated Wednesday, 11 May 2011 21:57

{/webgallery}