

## S3 Savage/IX

Written by Vlask

Thursday, 05 July 2012 14:27 - Last Updated Thursday, 05 July 2012 14:56

---



**Core:** 86C298 100,2MHz 128bit

**Memory:** 8MB (4, 16MB max) SDR integrated 100,2MHz 64bit

**Year:** 1999 **Bus:** AGP 2x

**Made:** 0,18µm Taiwan **Links:** [Press](#) [OpenGL](#)

**Note:** big thx goes to [Slaventus](#) for sending me this card

**Bios:** [Apollo](#)

{webgallery}

# S3 Savage/IX

Written by Vlask

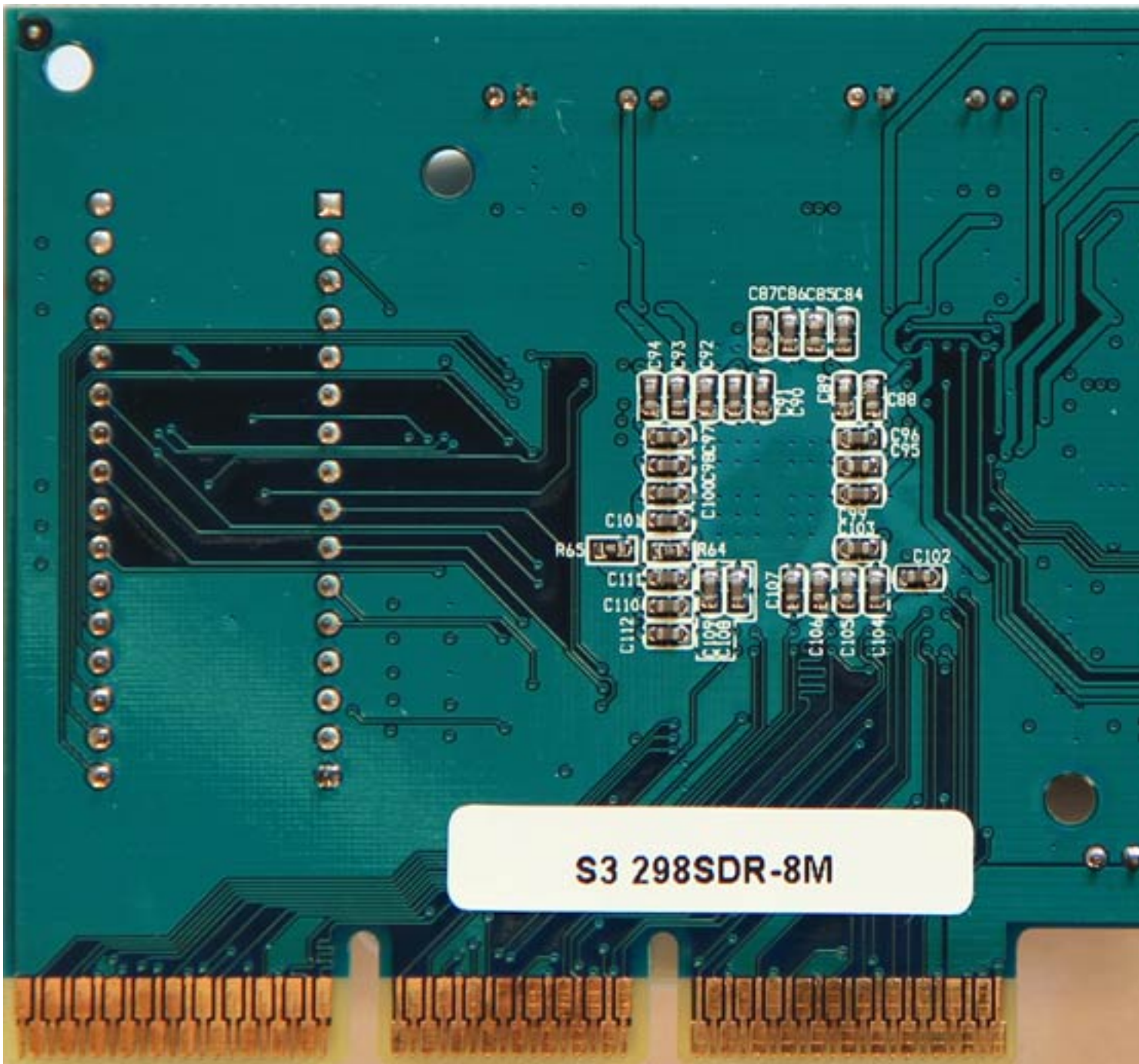
Thursday, 05 July 2012 14:27 - Last Updated Thursday, 05 July 2012 14:56



## S3 Savage/IX

Written by Vlask

Thursday, 05 July 2012 14:27 - Last Updated Thursday, 05 July 2012 14:56



# S3 Savage/IX

Written by Vlask

Thursday, 05 July 2012 14:27 - Last Updated Thursday, 05 July 2012 14:56



## S3 Savage/IX

Written by Vlask

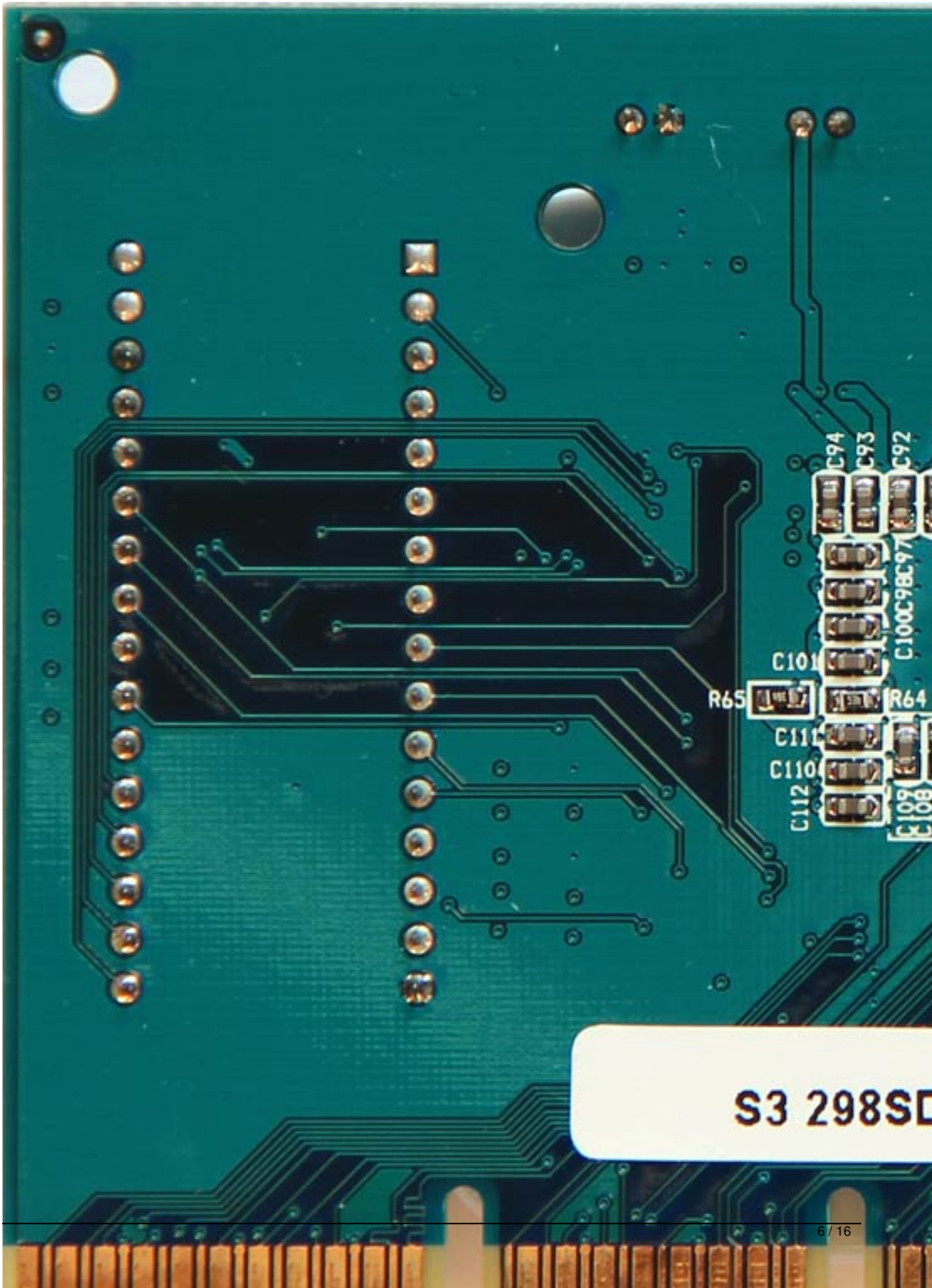
Thursday, 05 July 2012 14:27 - Last Updated Thursday, 05 July 2012 14:56

---

## S3 Savage/IX

Written by Vlask

Thursday, 05 July 2012 14:27 - Last Updated Thursday, 05 July 2012 14:56

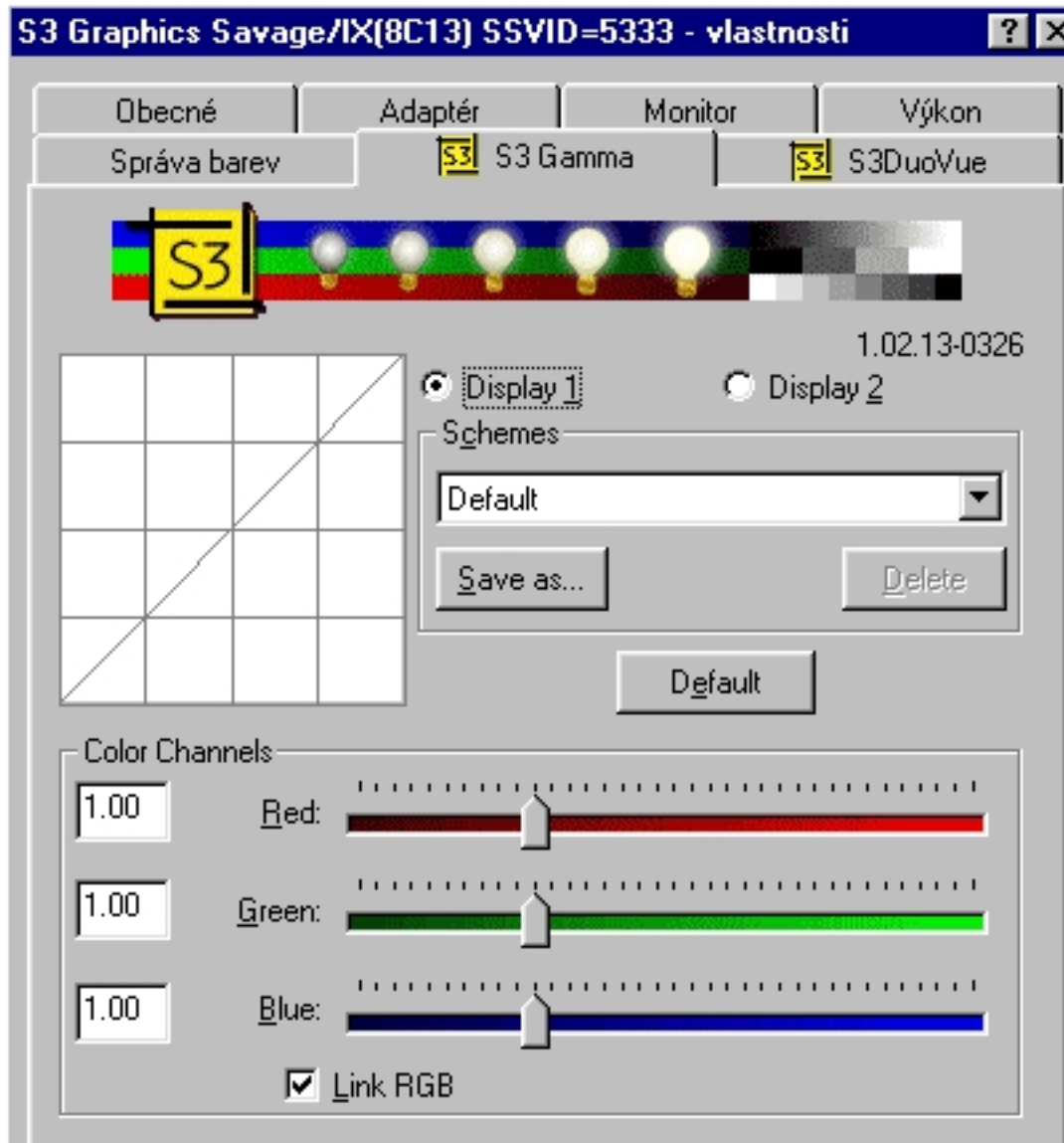


S3 298SD

## S3 Savage/IX

Written by Vlask

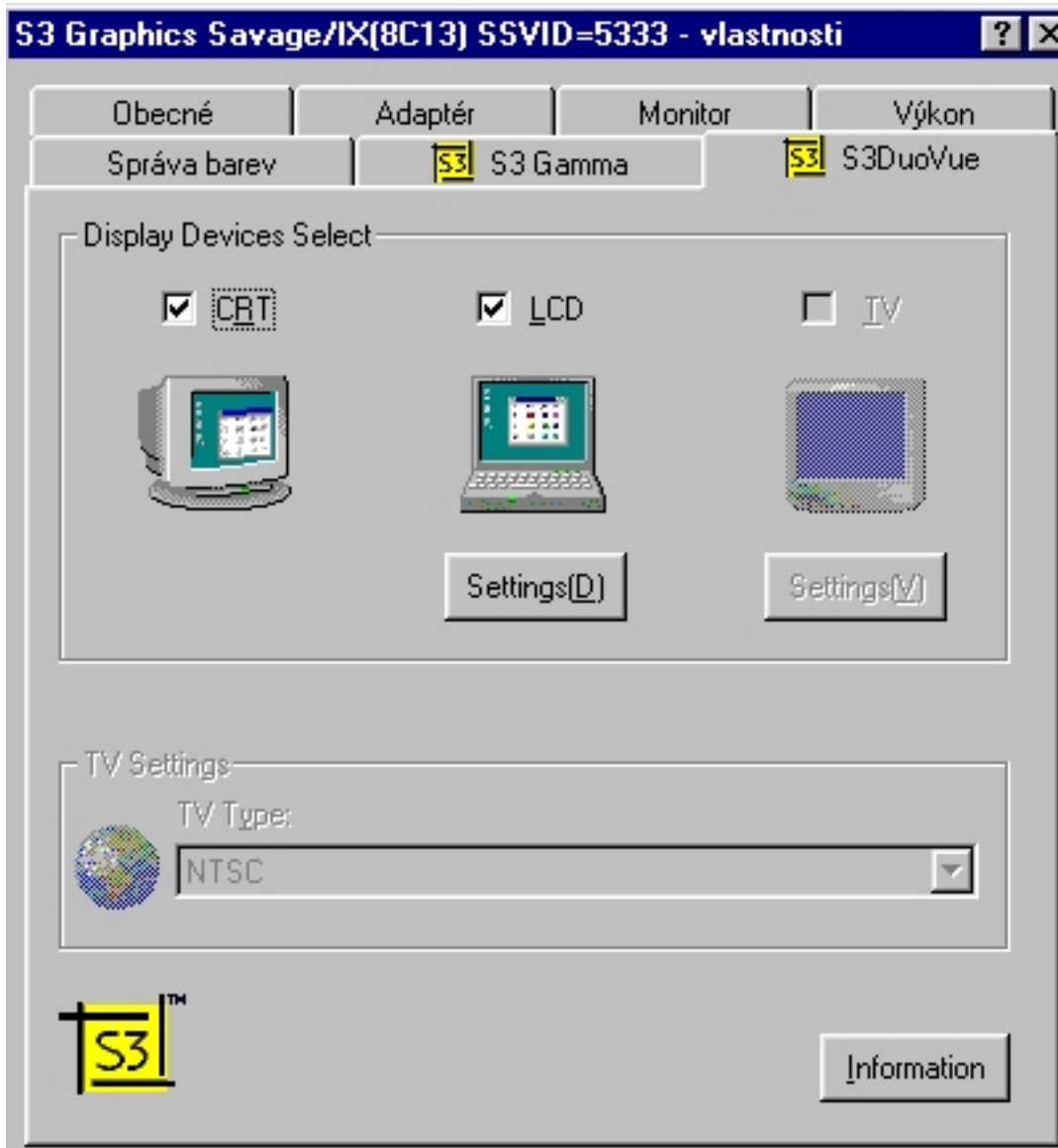
Thursday, 05 July 2012 14:27 - Last Updated Thursday, 05 July 2012 14:56



## S3 Savage/IX

Written by Vlask

Thursday, 05 July 2012 14:27 - Last Updated Thursday, 05 July 2012 14:56






## S3 Savage/IX

Written by Vlask

Thursday, 05 July 2012 14:27 - Last Updated Thursday, 05 July 2012 14:56

**S3DuoVue - vlastnosti** [?] [X]

Information



S3 Graphics adapter

Chip type:	Savage/IX
Video memory:	8 MB
BIOS version:	4.03.00 - 60



S3 Driver

Display driver:	s3_7.drv
Version:	4.12.01.7109-7.15.30
Date:	28.11.2001

VPM driver

Version:	4.10.32
Date:	23.11.1999



S3 display configuration utility

Version:	1.00.50-0710
Resources:	< none >

## S3 Savage/IX

Written by Vlask

Thursday, 05 July 2012 14:27 - Last Updated Thursday, 05 July 2012 14:56

---

### About S3Tweak - [v1.10a]



S3Tweak is a tray applet utility that provides a quick, easy way to adjust settings for your Savage-family card on the fly.

#### Video Info

Chip type: Savage/IX, rev E ID: 8C13  
Mclk: 100.2 MHz  
RAM: 8 MB SDRAM Bus: AGP  
BIOS ver: 4.03.00 - 60  
Subsystem: S3 Inc. (53338C13)  
System\CurrentControlSet\Services\Class\Display\0000  
Driver ver: 4.12.01.7109-7.15.30 (s3\_7.drv)  
Metal ver: 1, 0, 2, 5 (metal.dll)  
ICD ver: 2.10.68 (mxicd.dll)

#### System Info

CPU Type: AuthenticAMD Athlon (Model 8) at 1806.0 MHz  
Features: MMX, Streaming SIMD, Extended  
CPU Info: Stepping 1 L1=128KB L2=256KB  
RAM: 256 MB/193 MB free, virt=1793 MB/1762 MB free  
OS ver: Windows 98 (4.10A bld 2222)  
DirectX ver: 4.09.00.0904 (DirectX 9.0)  
DxMedia ver: 6.05.01.0900

Right!



## S3 Savage/IX

Written by Vlask

Thursday, 05 July 2012 14:27 - Last Updated Thursday, 05 July 2012 14:56

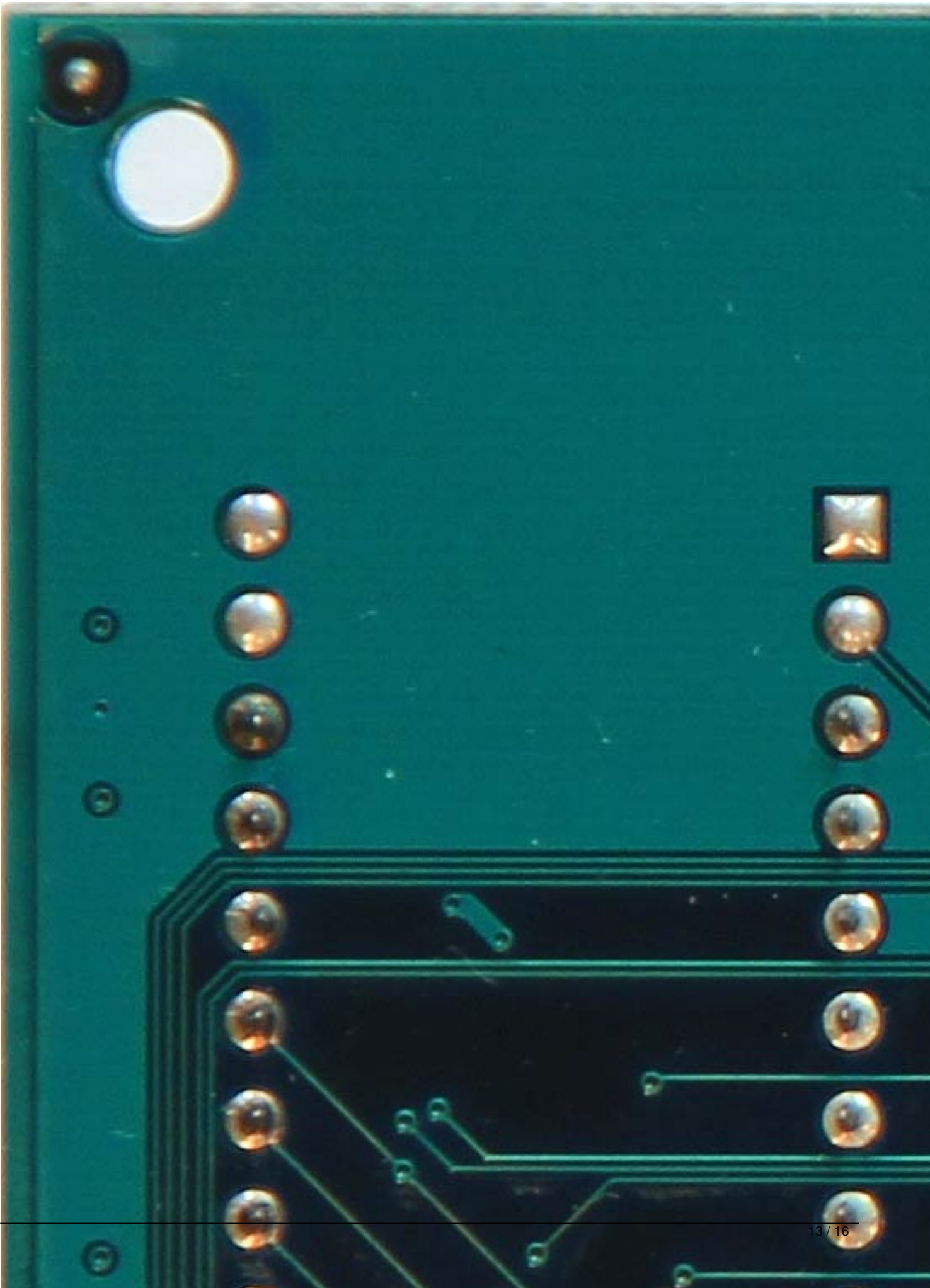
---

## S3 Savage/IX

Written by Vlask

Thursday, 05 July 2012 14:27 - Last Updated Thursday, 05 July 2012 14:56

---



## S3 Savage/IX

Written by Vlask

Thursday, 05 July 2012 14:27 - Last Updated Thursday, 05 July 2012 14:56

---



## S3 Savage/IX

Written by Vlask

Thursday, 05 July 2012 14:27 - Last Updated Thursday, 05 July 2012 14:56

---

{/webgallery}