

S3 P86C805

Written by Vlask

Sunday, 01 November 2009 18:08 - Last Updated Thursday, 04 March 2010 20:03



Core: P86C805 ?MHz 32bit

Memory: 1MB DRAM ?MHz ?bit

Year: 1992 **Bus:** integrated/VL-Bus

Made: Japan **Links:** [Gbooks](#)

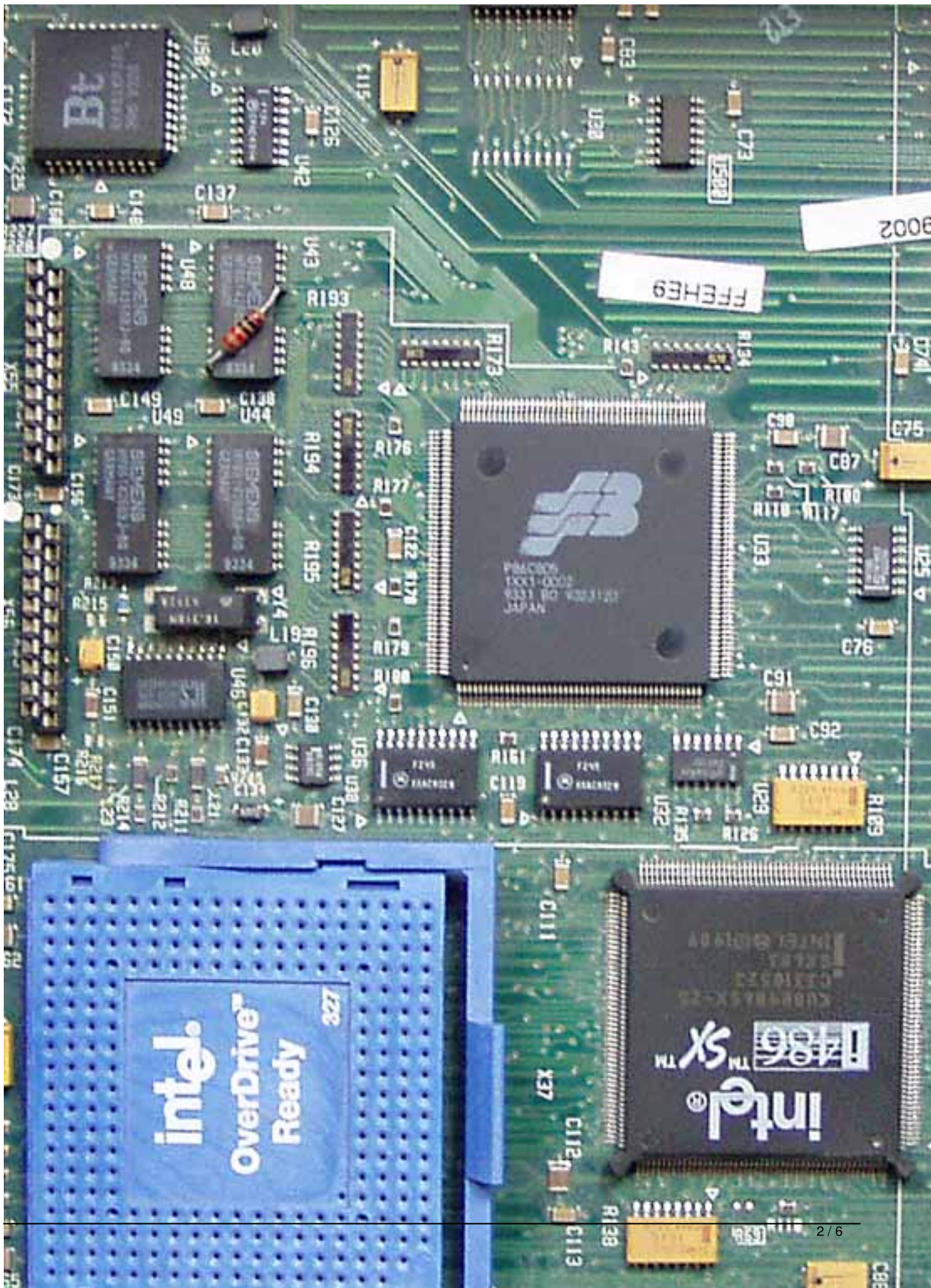
Bios: [VL-Bus](#)

{webgallery}

S3 P86C805

Written by Vlask

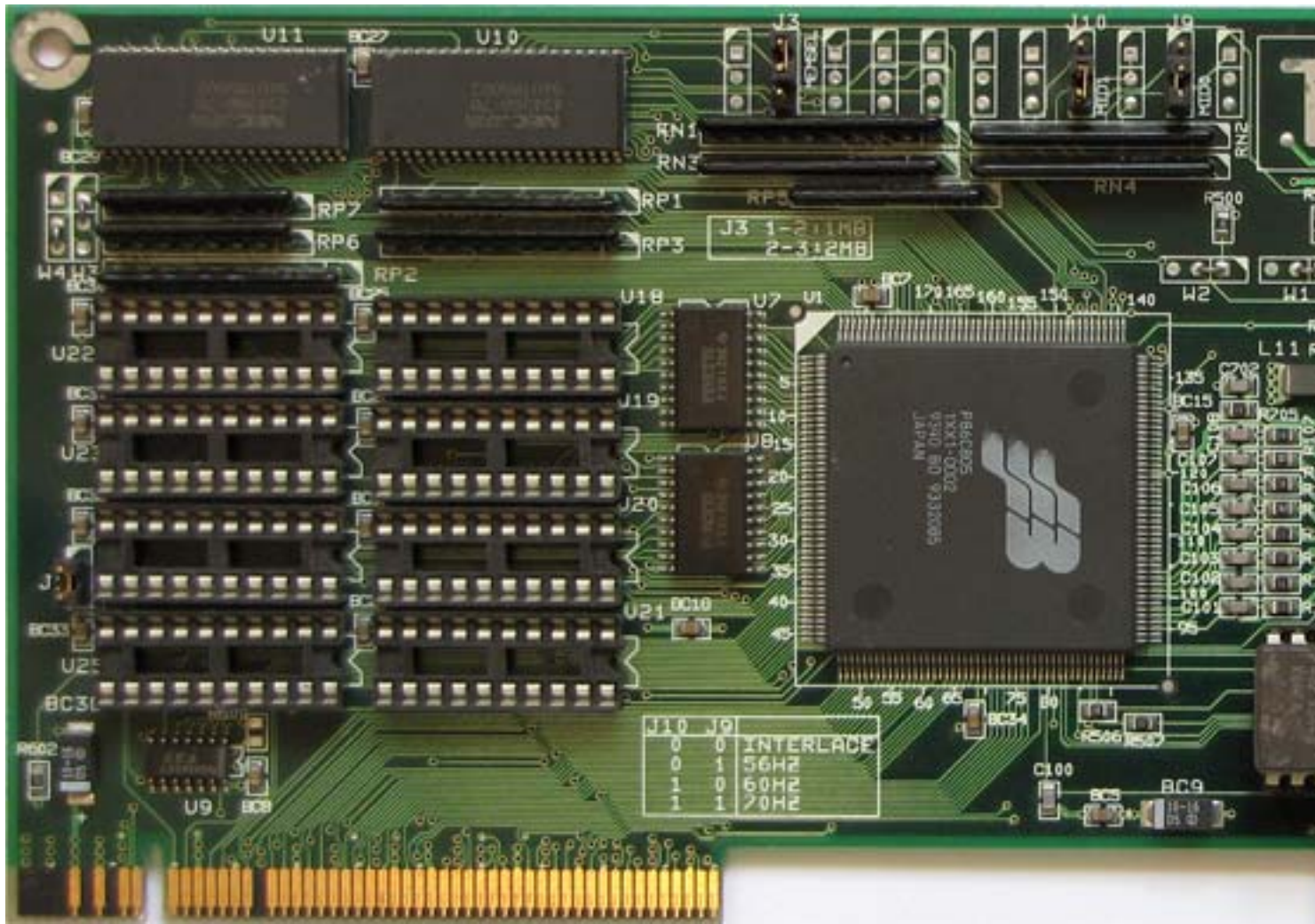
Sunday, 01 November 2009 18:08 - Last Updated Thursday, 04 March 2010 20:03



S3 P86C805

Written by Vlask

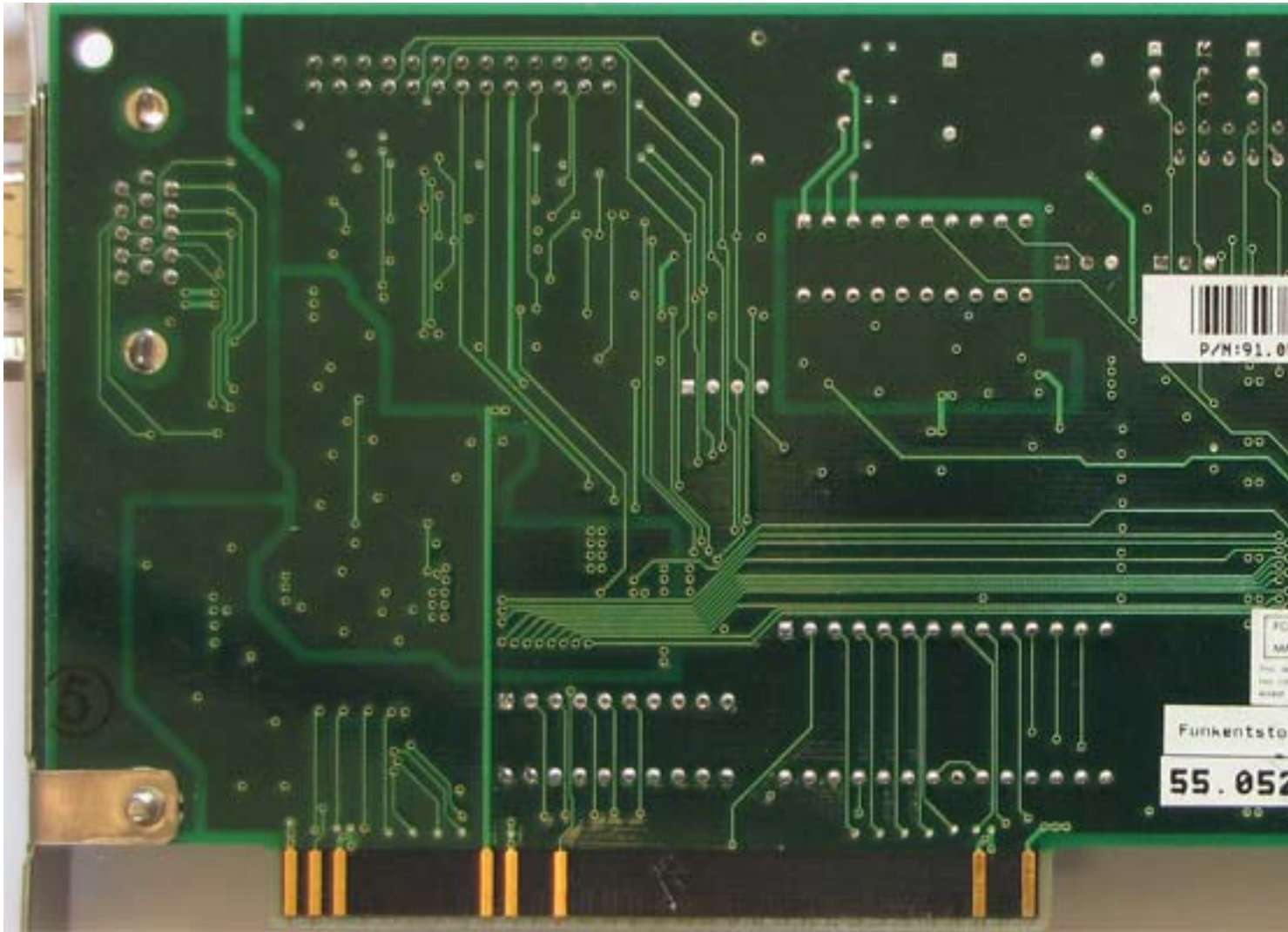
Sunday, 01 November 2009 18:08 - Last Updated Thursday, 04 March 2010 20:03



S3 P86C805

Written by Vlask

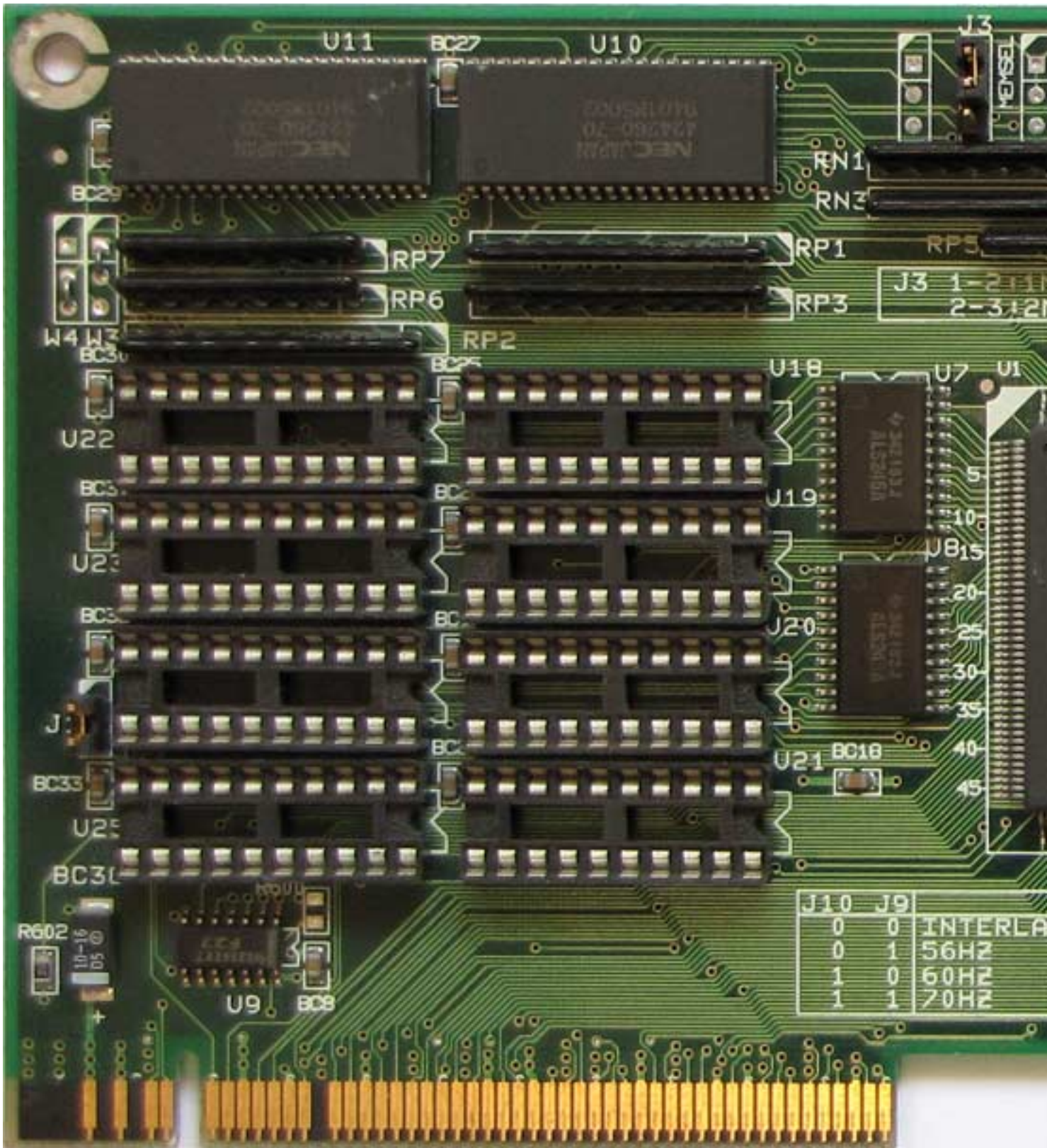
Sunday, 01 November 2009 18:08 - Last Updated Thursday, 04 March 2010 20:03



S3 P86C805

Written by Vlask

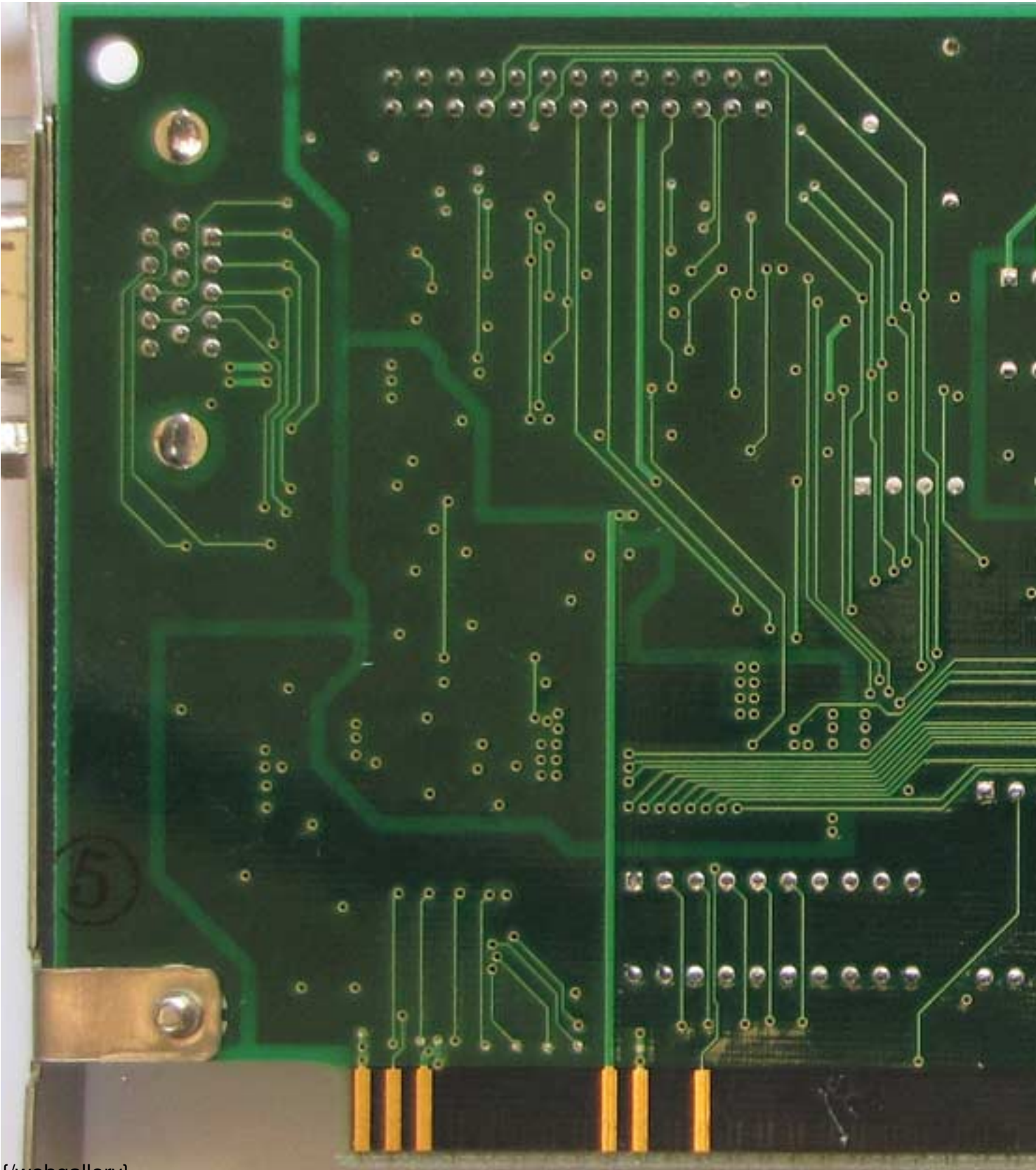
Sunday, 01 November 2009 18:08 - Last Updated Thursday, 04 March 2010 20:03



S3 P86C805

Written by Vlask

Sunday, 01 November 2009 18:08 - Last Updated Thursday, 04 March 2010 20:03



{/webgallery}