

## S3 Virge/DX

Written by Vlask

Thursday, 05 November 2009 22:33 - Last Updated Thursday, 15 September 2011 00:22

---



**Core:** 86C375 50,11/66,22/72,19MHz 64bit

**Memory:** 4MB 1 cycle EDO 50,11/66,22/72,19MHz 64bit

**Year:** 1996 **Bus:** PCI

**Made:** Taiwan, Korea **Links:** [Pdf](#) [Vintage3D](#)

**Bios:** [Eagles](#) [CardExpert](#) [Diamond](#)

**Variants:** Eagles 4MB 50,11MHz 1cycle EDO 3,5ns

CardExpert 4MB 66,22MHz EDO 1cycle 3,5ns

Diamond 4MB 72,19MHz EDO 1cycle 0ns

{webgallery}

# S3 Virge/DX

Written by Vlask

Thursday, 05 November 2009 22:33 - Last Updated Thursday, 15 September 2011 00:22



## S3 Virge/DX

Written by Vlask

Thursday, 05 November 2009 22:33 - Last Updated Thursday, 15 September 2011 00:22

---



# S3 Virge/DX

Written by Vlask

Thursday, 05 November 2009 22:33 - Last Updated Thursday, 15 September 2011 00:22

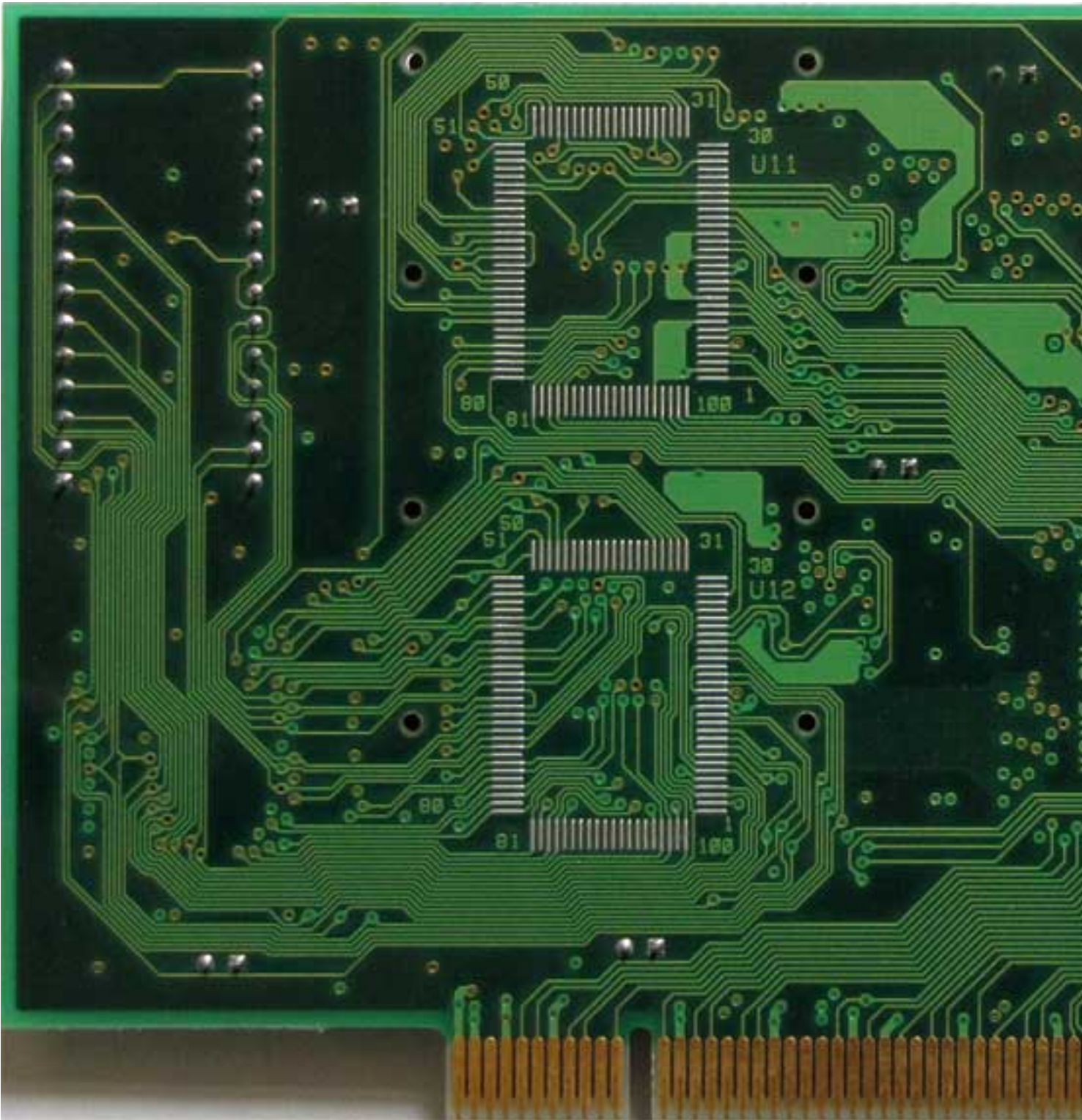


### S3 Virge/DX

Written by Vlask

Thursday, 05 November 2009 22:33 - Last Updated Thursday, 15 September 2011 00:22

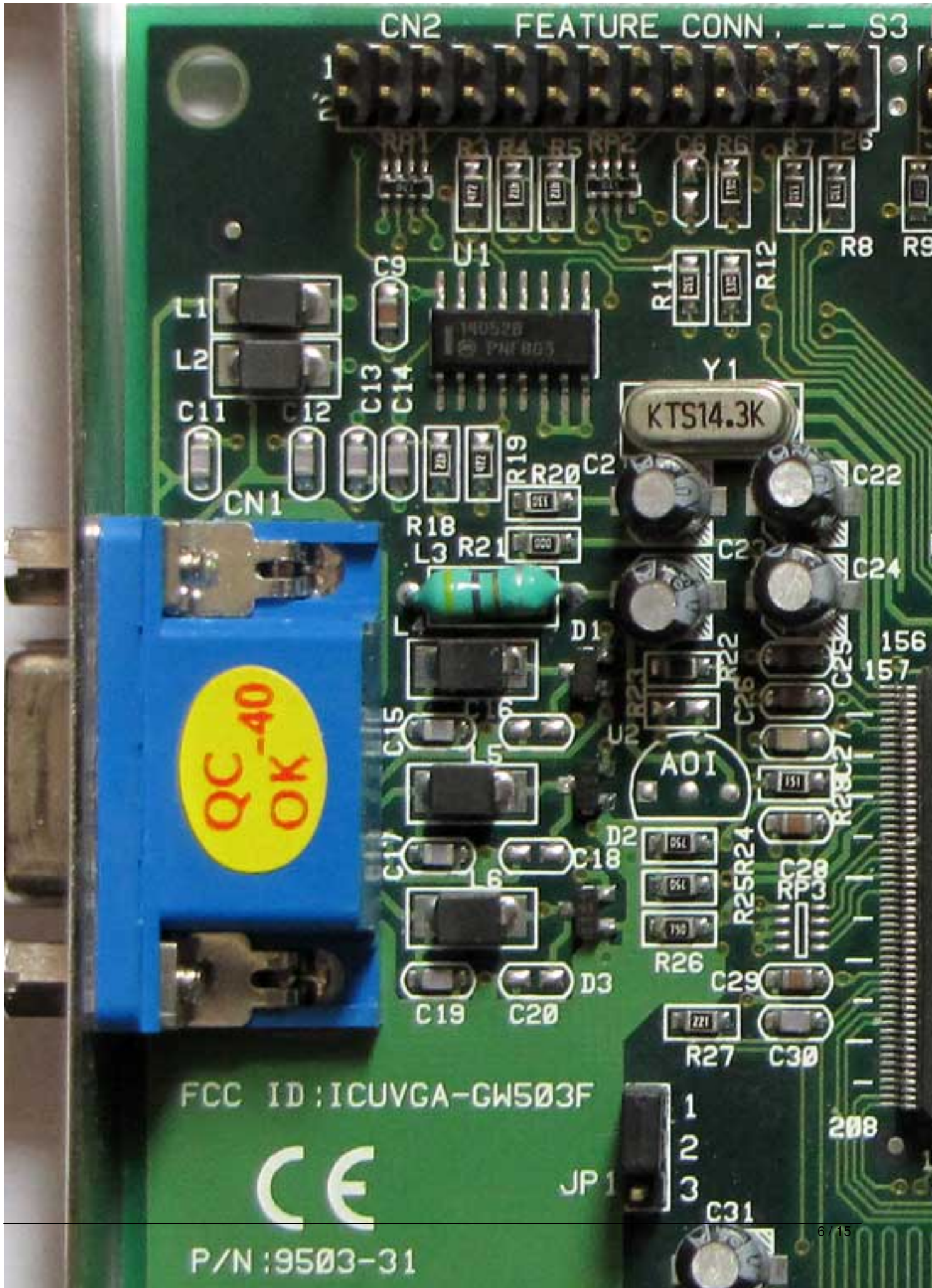
---



# S3 Virge/DX

Written by Vlask

Thursday, 05 November 2009 22:33 - Last Updated Thursday, 15 September 2011 00:22



## S3 Virge/DX

Written by Vlask

Thursday, 05 November 2009 22:33 - Last Updated Thursday, 15 September 2011 00:22

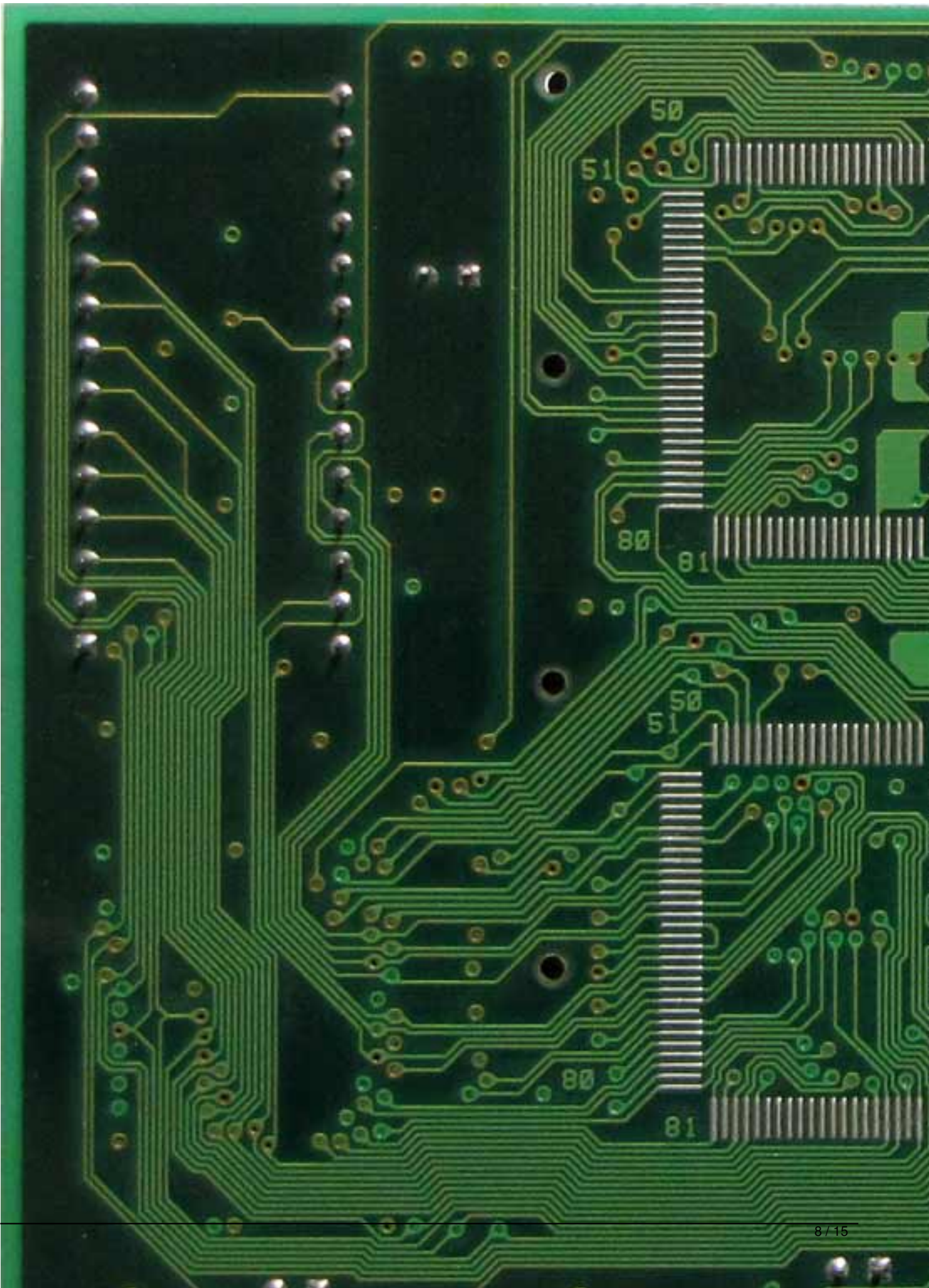
---

## S3 Virge/DX

Written by Vlask

Thursday, 05 November 2009 22:33 - Last Updated Thursday, 15 September 2011 00:22

---

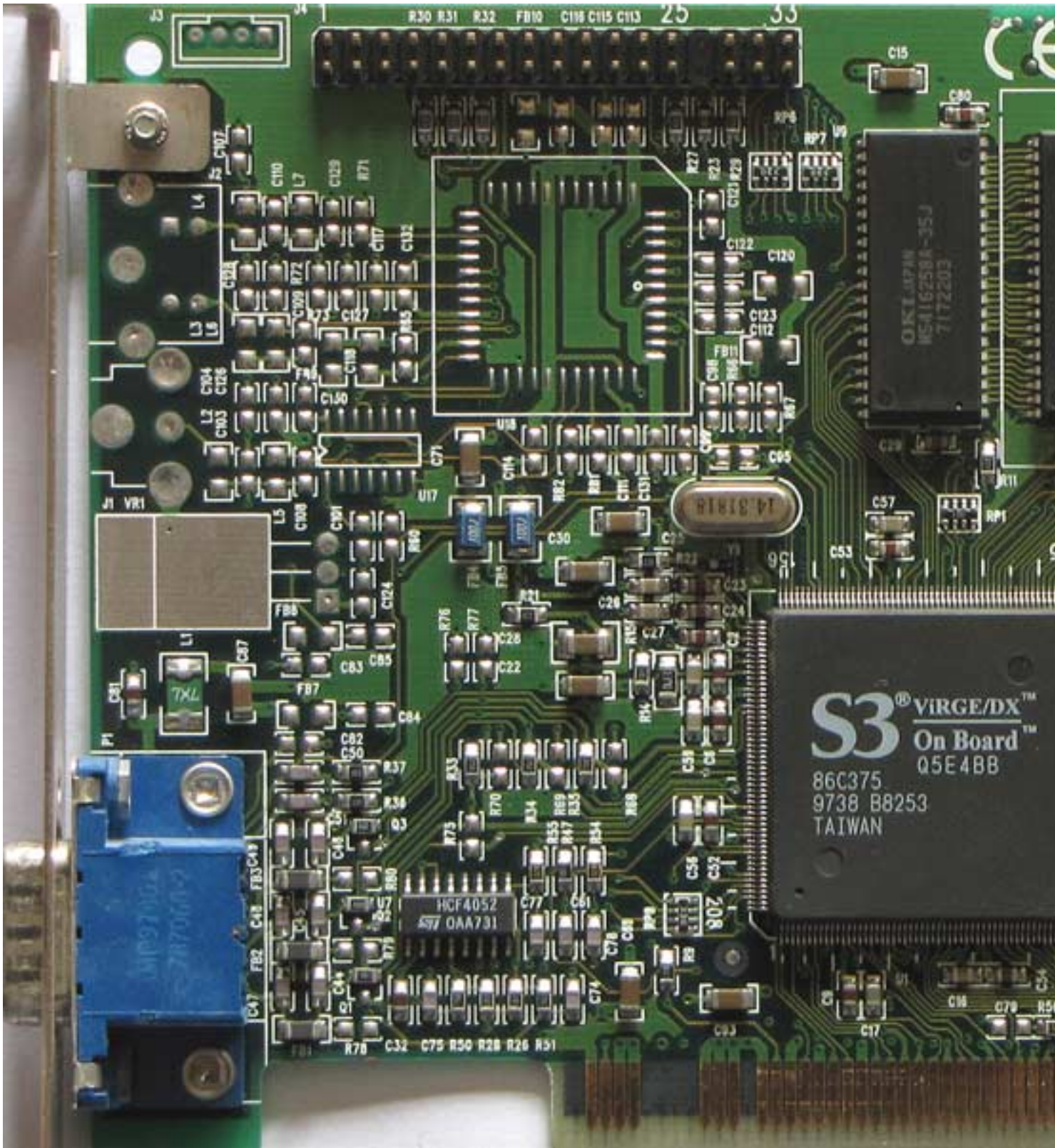




# S3 Virge/DX

Written by Vlask

Thursday, 05 November 2009 22:33 - Last Updated Thursday, 15 September 2011 00:22



# S3 Virge/DX

Written by Vlask

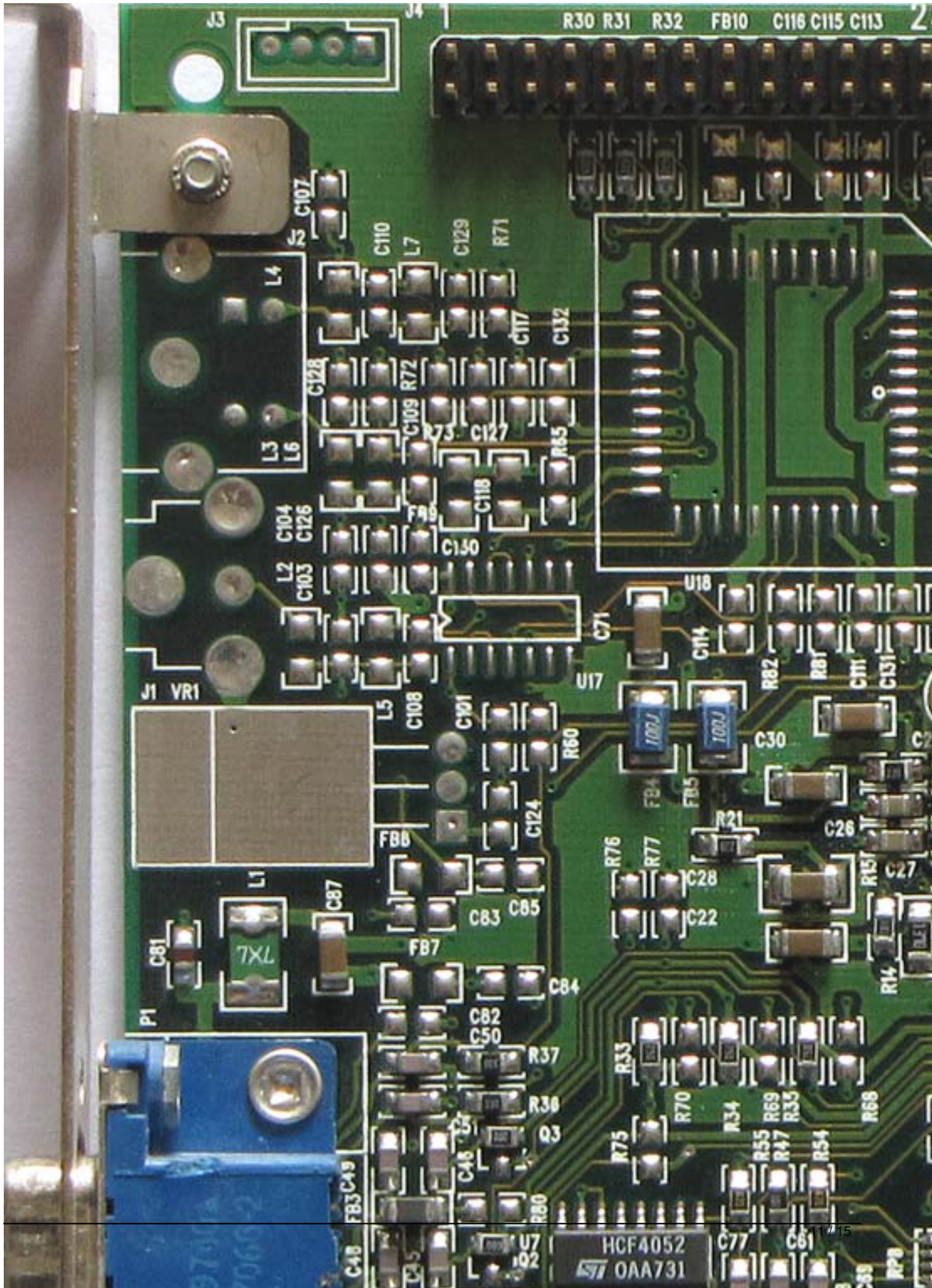
Thursday, 05 November 2009 22:33 - Last Updated Thursday, 15 September 2011 00:22



### S3 Virge/DX

Written by Vlask

Thursday, 05 November 2009 22:33 - Last Updated Thursday, 15 September 2011 00:22



## S3 Virge/DX

Written by Vlask

Thursday, 05 November 2009 22:33 - Last Updated Thursday, 15 September 2011 00:22

---

S3 Virge/DX

Written by Vlask

Thursday, 05 November 2009 22:33 - Last Updated Thursday, 15 September 2011 00:22



S/N 457 0100024997  
P/N 23033231-404  
ST 3D 2K PRO NO/TV 4MB S3 Diamond Multimedia Systems, Inc.

Multimedia, Inc. Stealth 3D 2000 Pro  
Tested To Comply  
With FCC Standards  
FOR HOME OR OFFICE USE

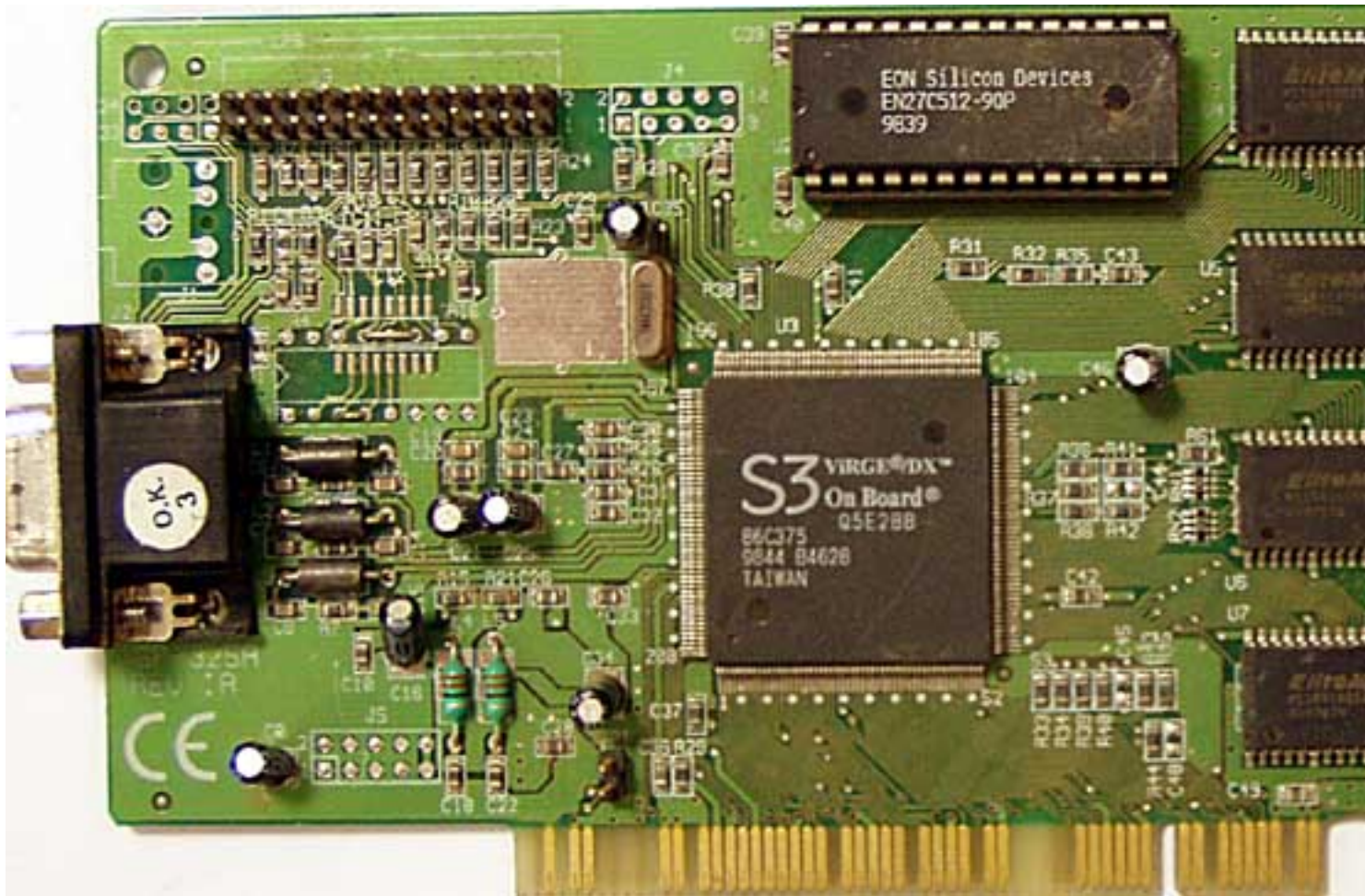
DMASI  
T68

## S3 Virge/DX

Written by Vlask

Thursday, 05 November 2009 22:33 - Last Updated Thursday, 15 September 2011 00:22

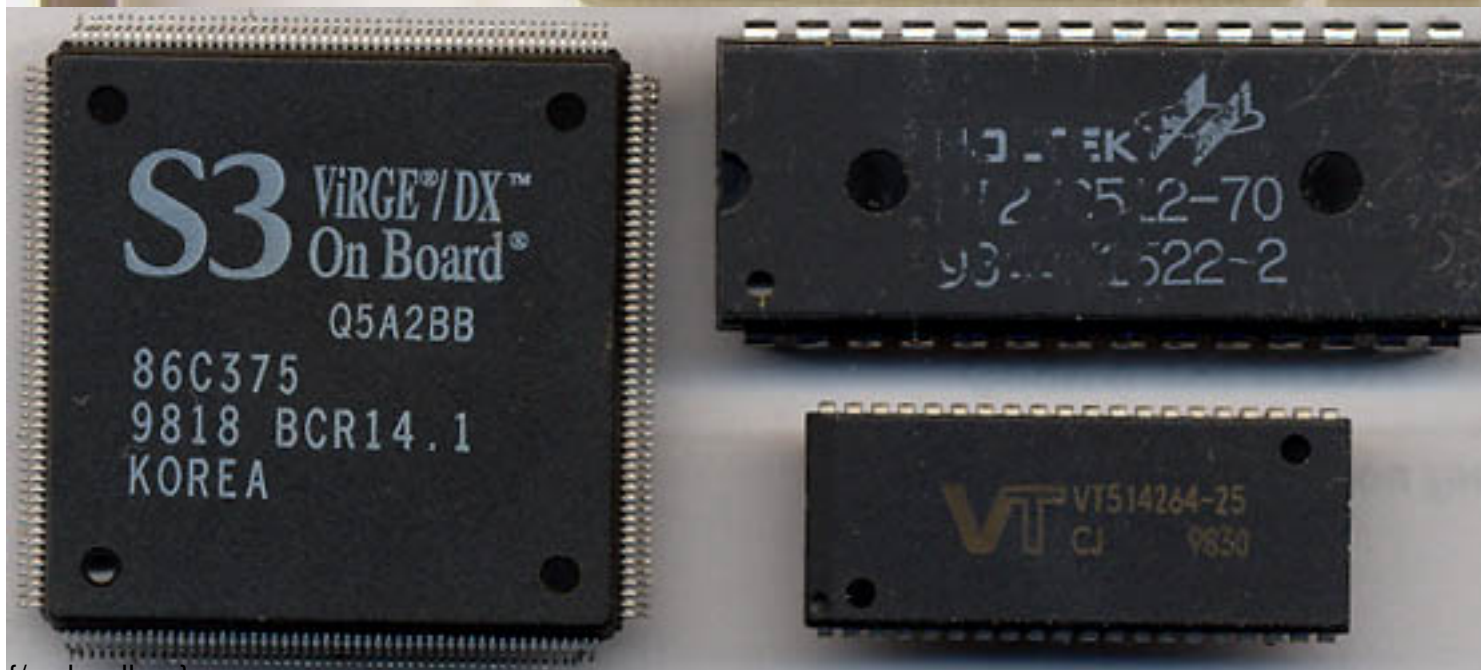
---



## S3 Virge/DX

Written by Vlask

Thursday, 05 November 2009 22:33 - Last Updated Thursday, 15 September 2011 00:22



{/webgallery}