

XGI Volari V8

Written by Vlask

Wednesday, 28 July 2010 10:31 - Last Updated Saturday, 14 January 2012 11:12



Core: XGI Volari V8 280MHz 256bit

Memory: 128MB DDR 500MHz 128bit

Year: 2004 **Bus:** AGP 8x

Made: UMC 0,13µm **Links:** [PCStats](#) [Bigbruin](#)

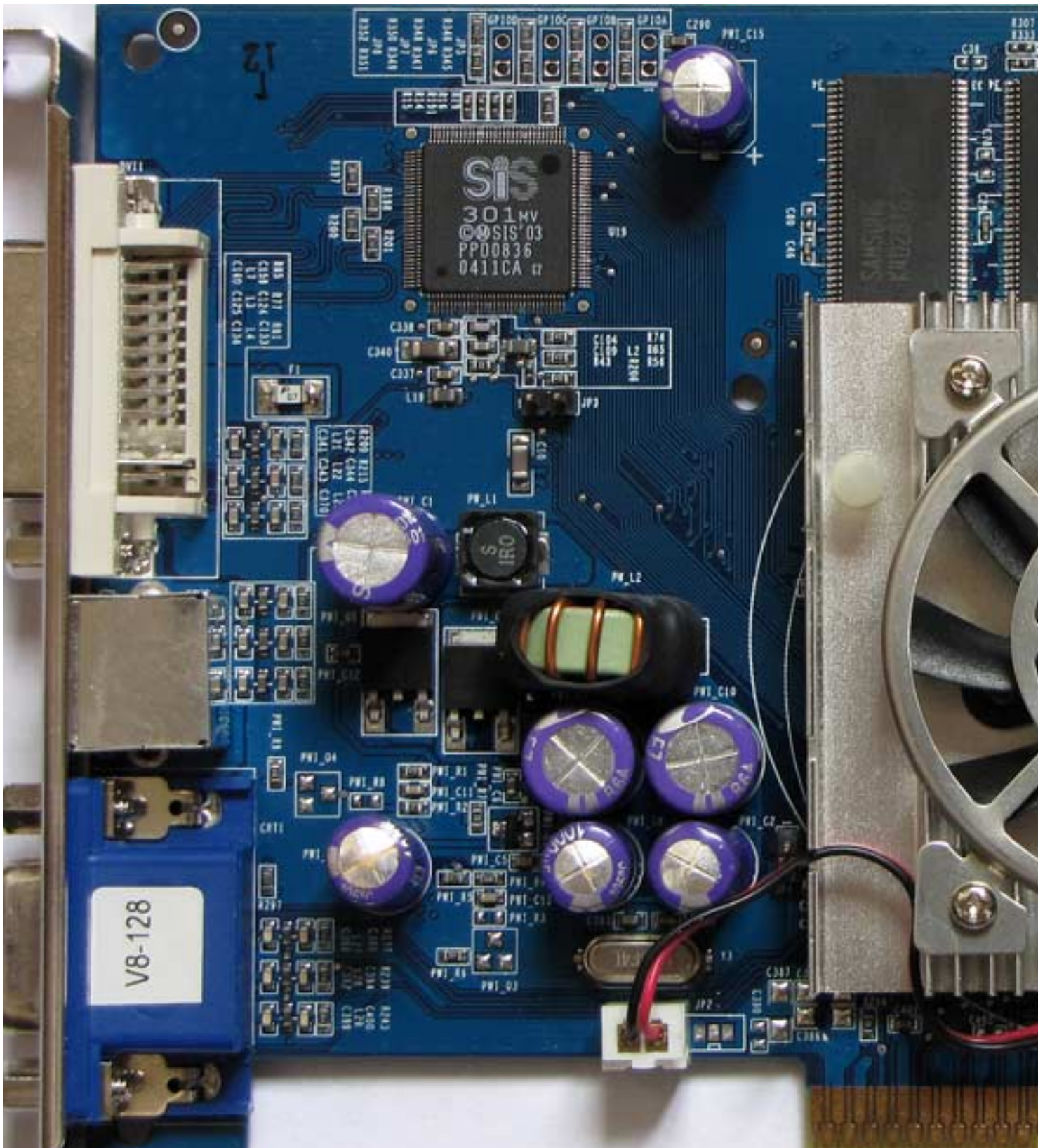
Bios: [Fic](#)

{webgallery}

XGI Volari V8

Written by Vlask

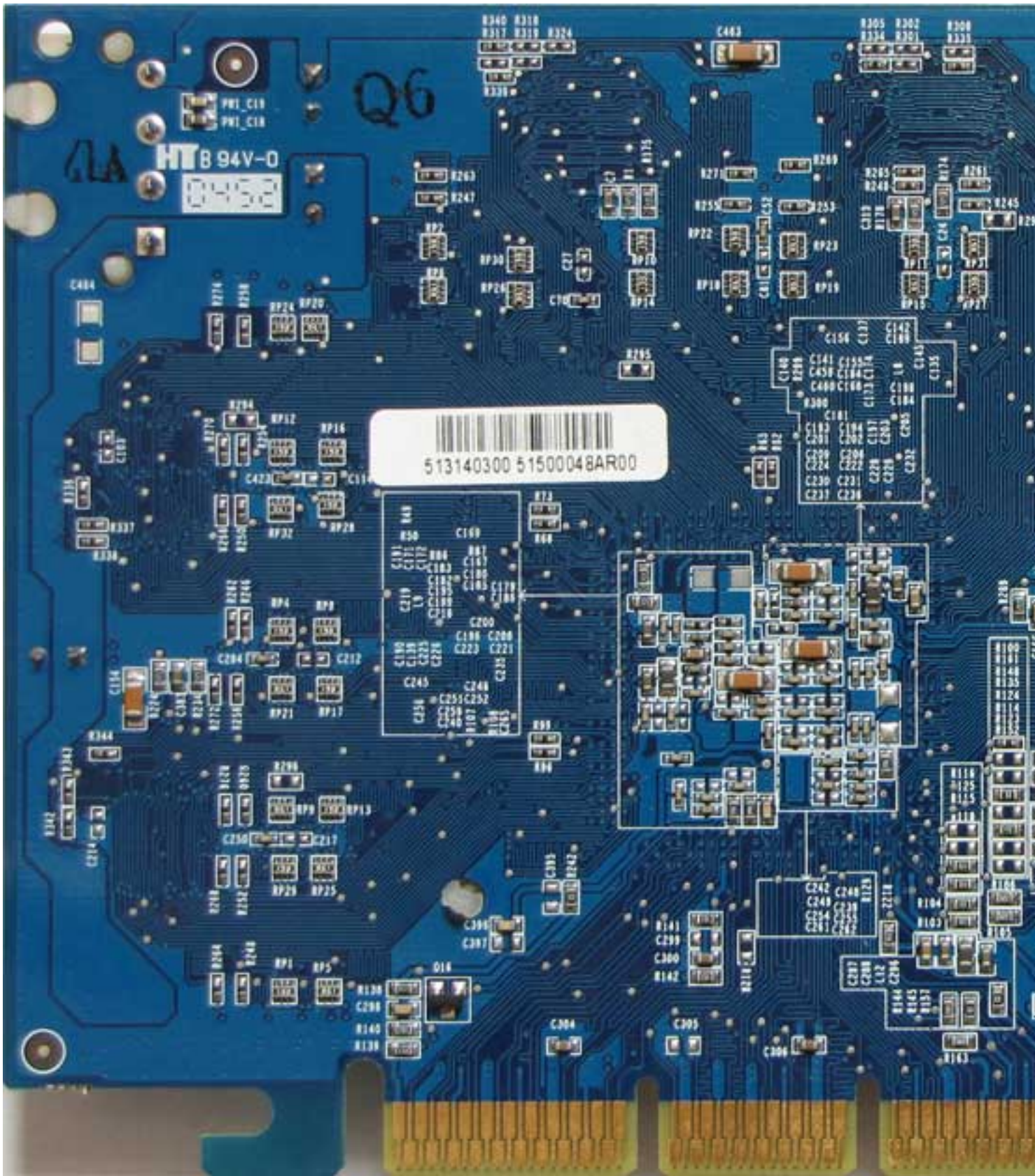
Wednesday, 28 July 2010 10:31 - Last Updated Saturday, 14 January 2012 11:12



XGI Volari V8

Written by Vlask

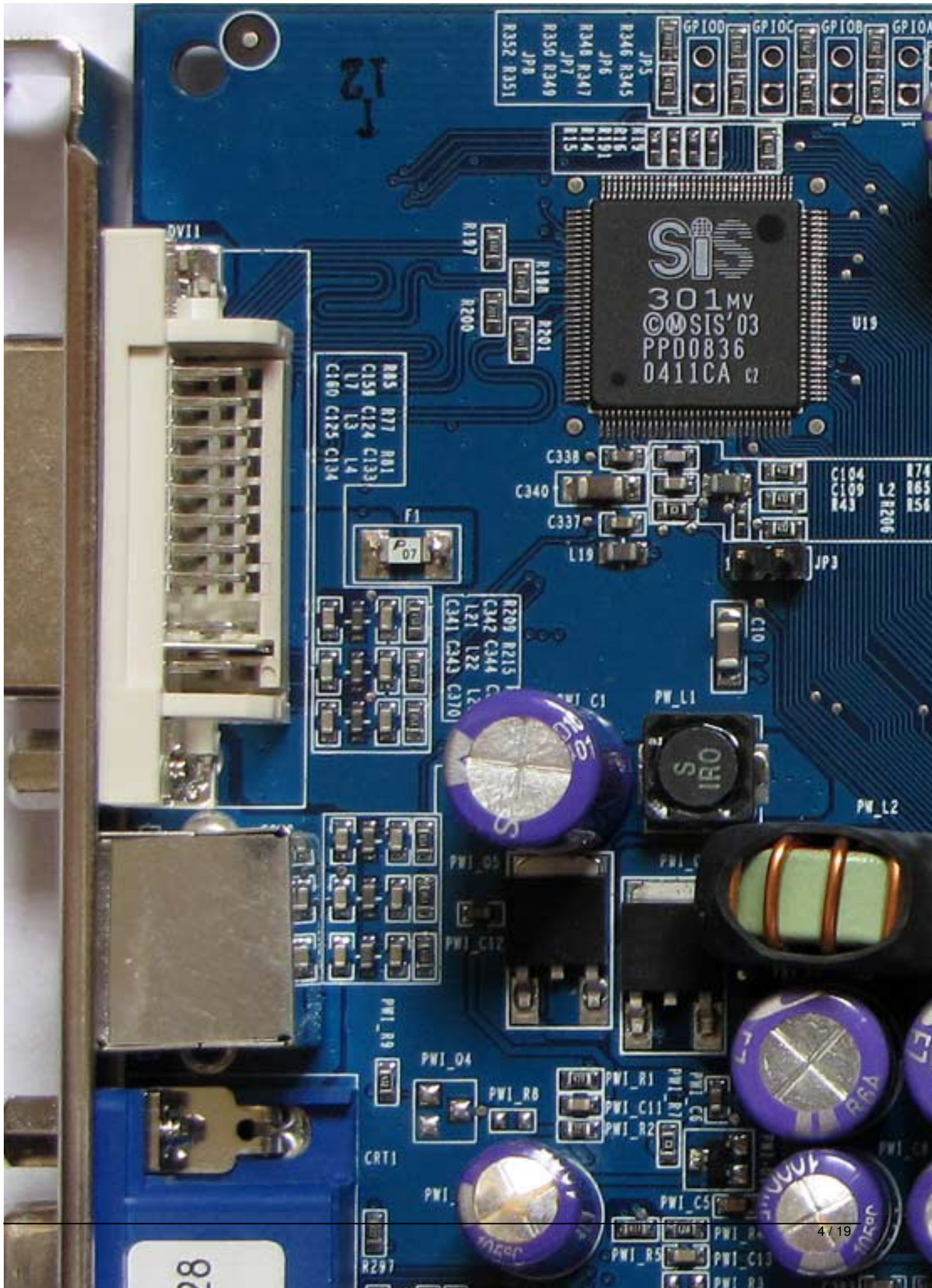
Wednesday, 28 July 2010 10:31 - Last Updated Saturday, 14 January 2012 11:12



XGI Volari V8

Written by Vlask

Wednesday, 28 July 2010 10:31 - Last Updated Saturday, 14 January 2012 11:12



XGI Volari V8

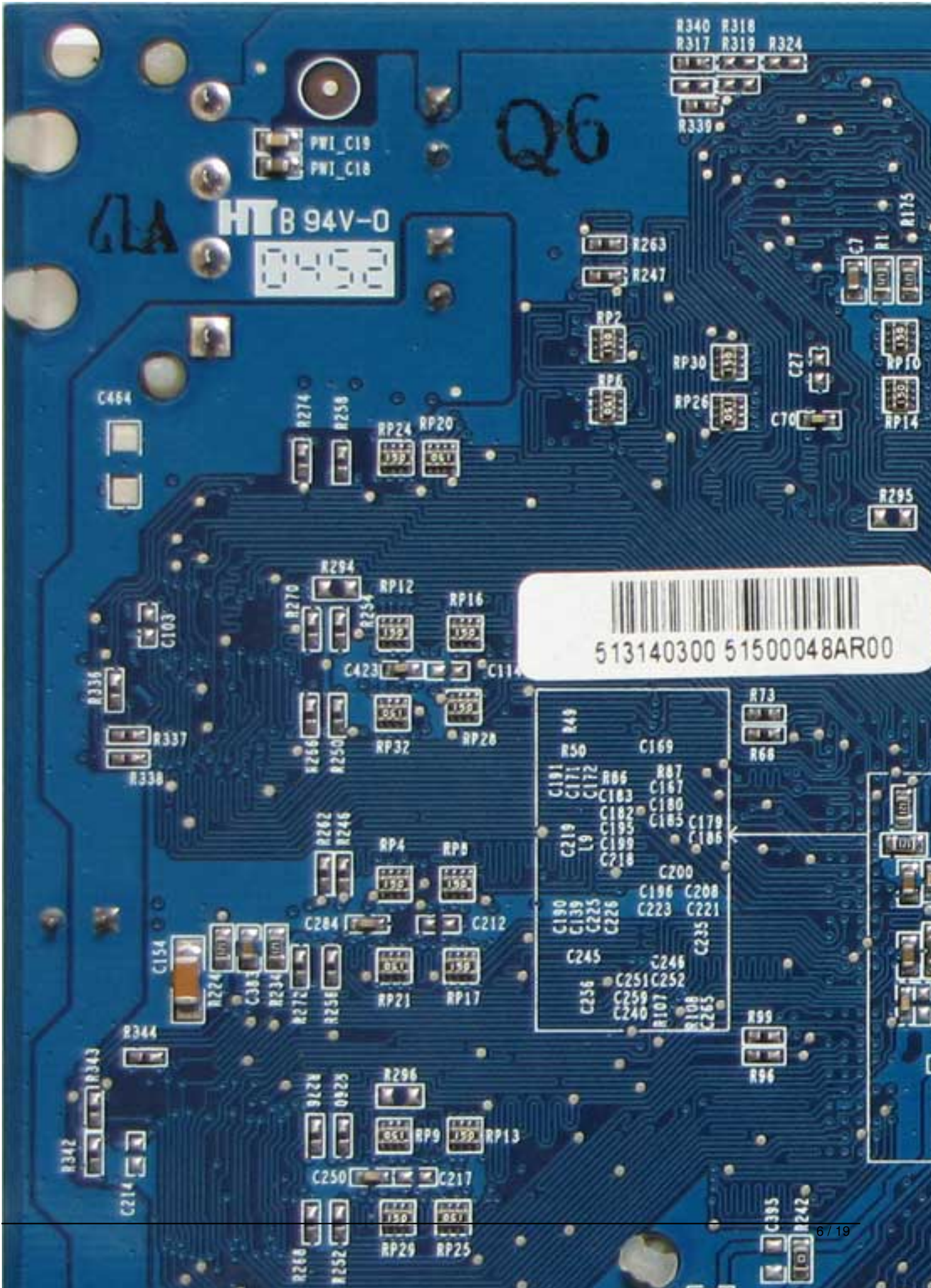
Written by Vlask

Wednesday, 28 July 2010 10:31 - Last Updated Saturday, 14 January 2012 11:12

XGI Volari V8

Written by Vlask

Wednesday, 28 July 2010 10:31 - Last Updated Saturday, 14 January 2012 11:12



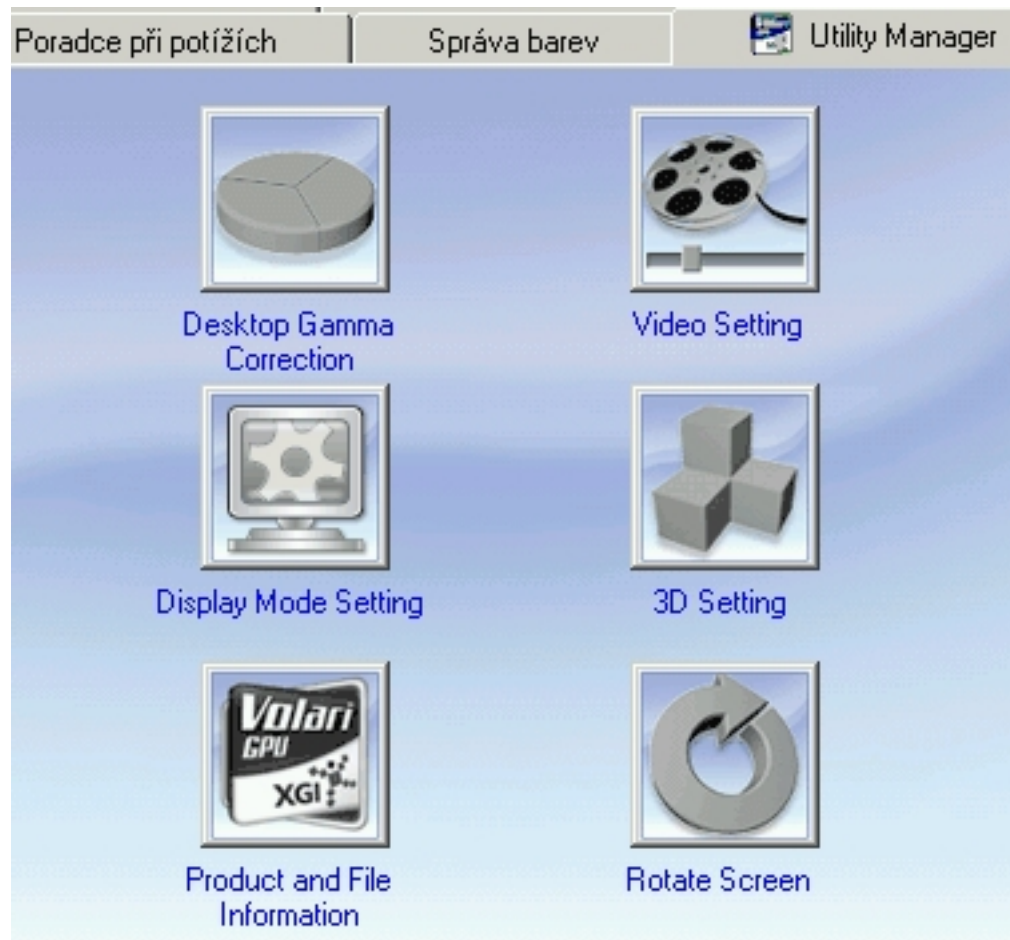
513140300 51500048AR00

R49
R50
C191
C171
C172
R86
R87
C183
C187
C182
C180
C195
C185
C179
C186
C219
L9
C199
C218
C200
C196
C208
C223
C221
C245
C246
C251
C252
C256
C259
C240
R107
R108
C265

XGI Volari V8

Written by Vlask

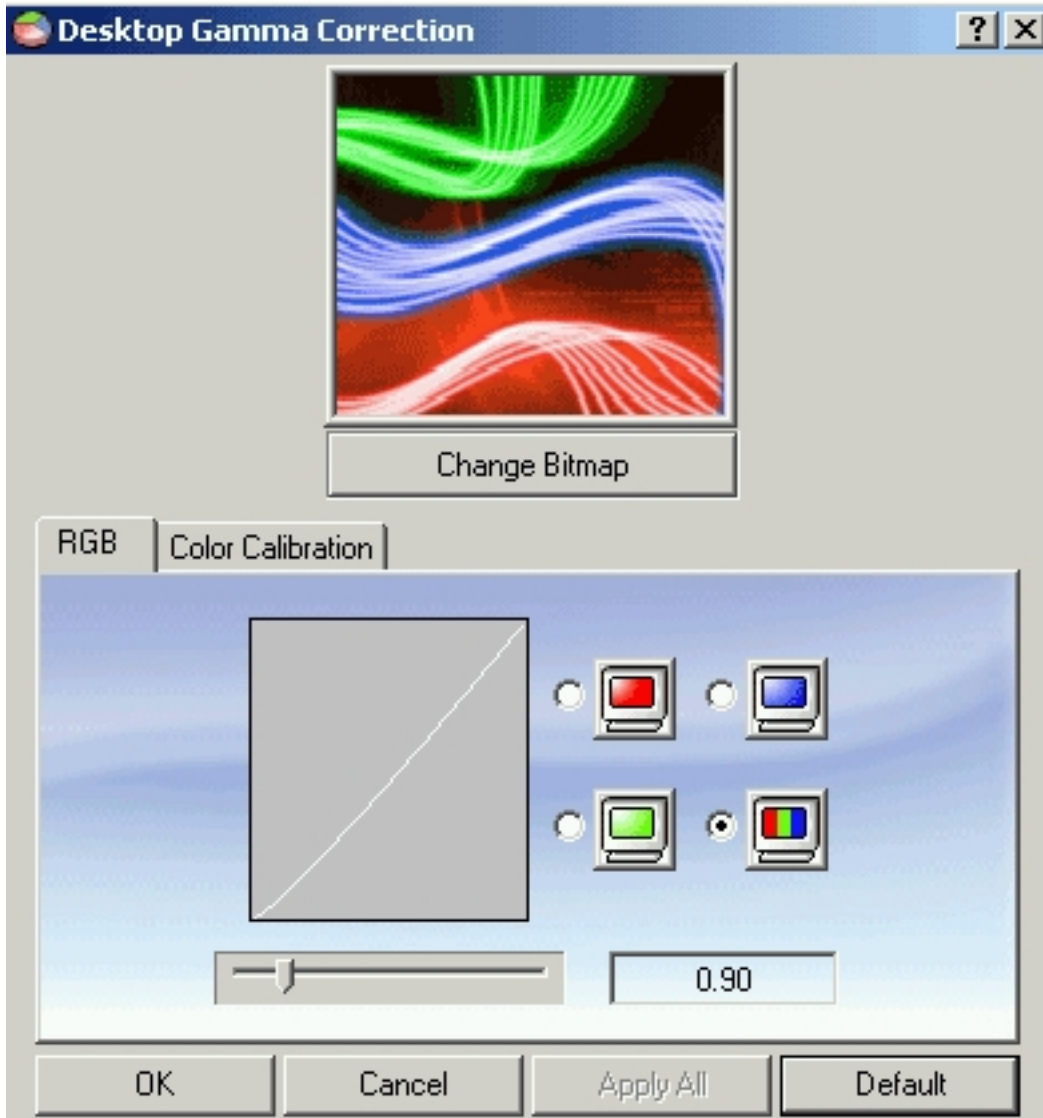
Wednesday, 28 July 2010 10:31 - Last Updated Saturday, 14 January 2012 11:12



XGI Volari V8

Written by Vlask

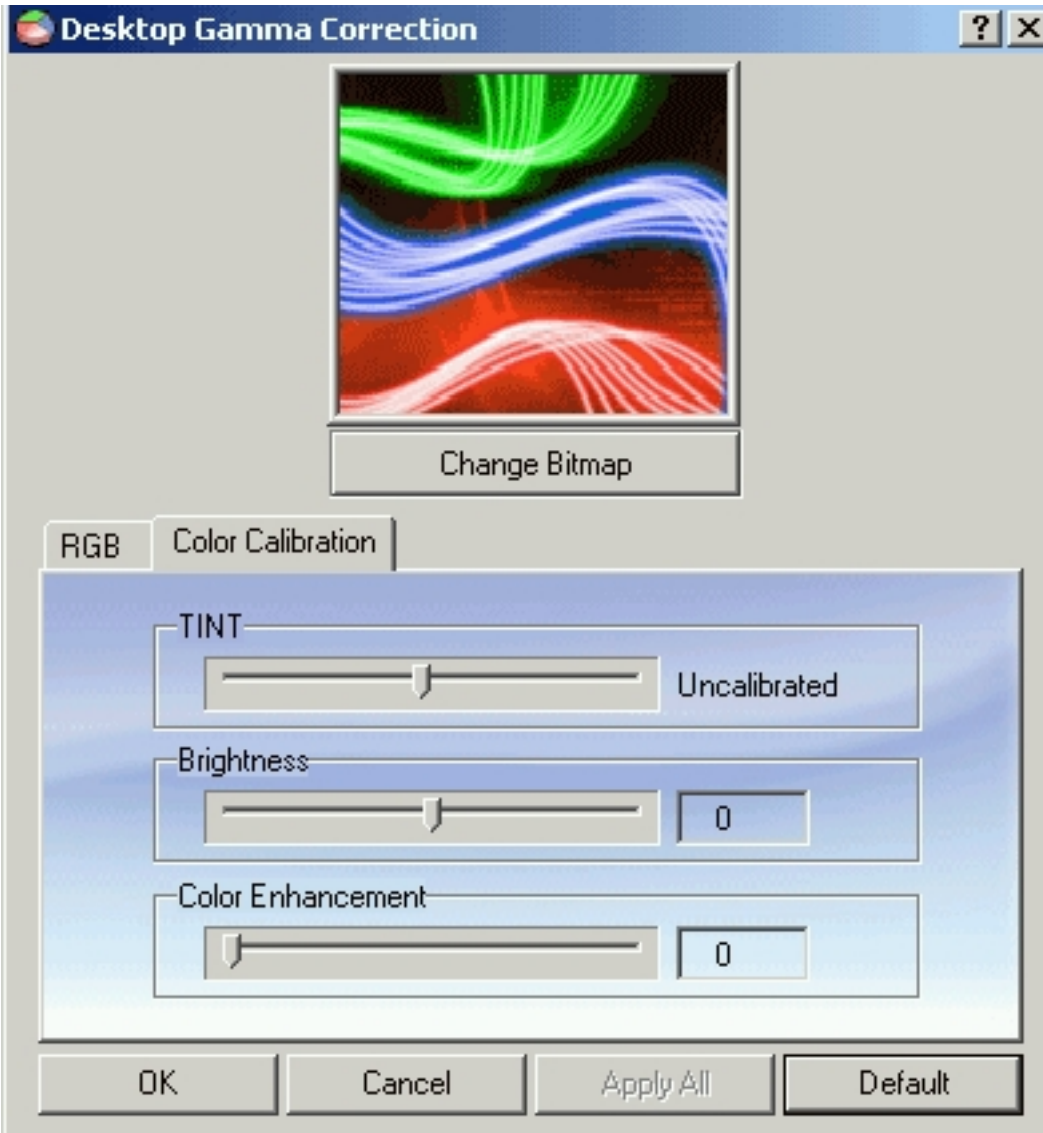
Wednesday, 28 July 2010 10:31 - Last Updated Saturday, 14 January 2012 11:12



XGI Volari V8

Written by Vlask

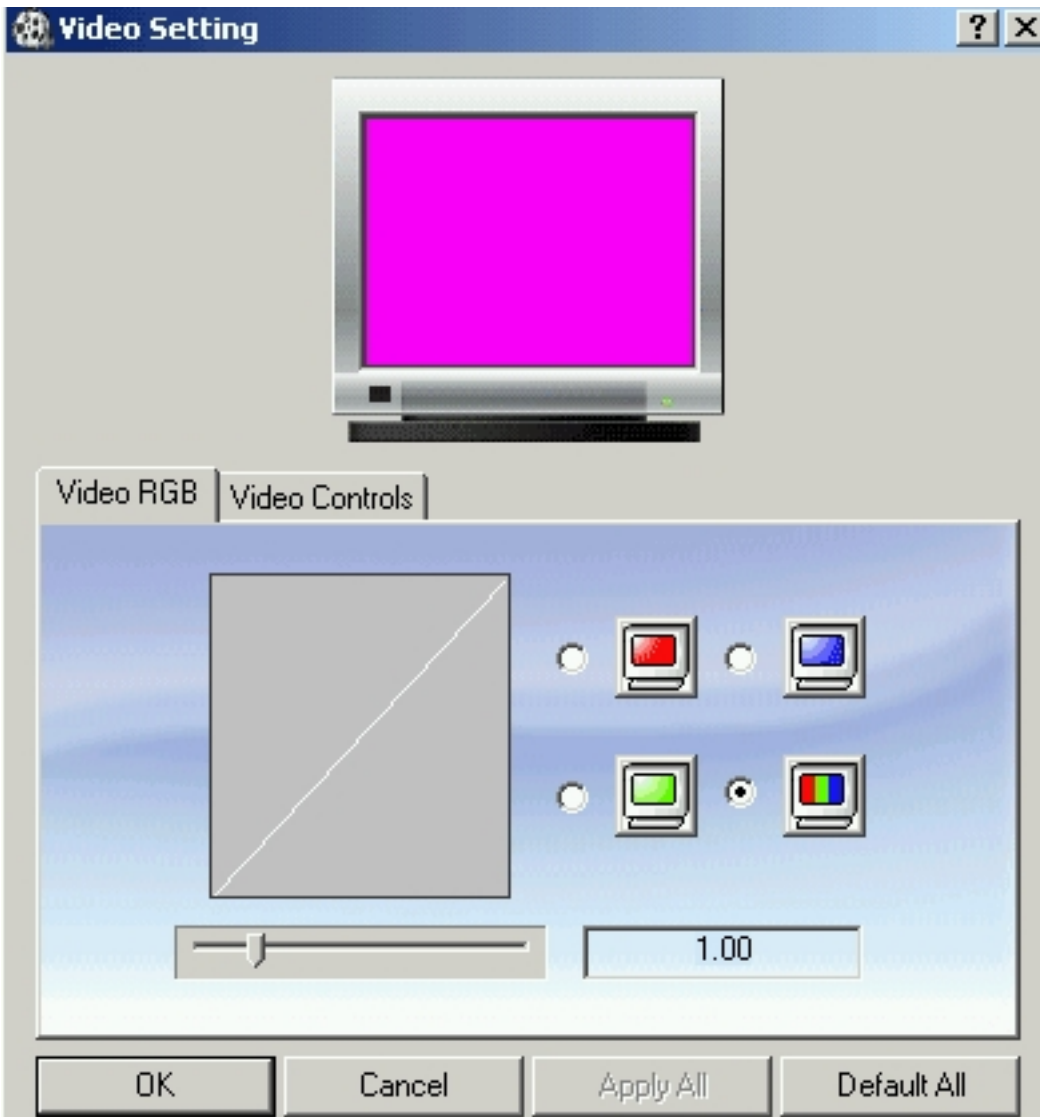
Wednesday, 28 July 2010 10:31 - Last Updated Saturday, 14 January 2012 11:12



XGI Volari V8

Written by Vlask

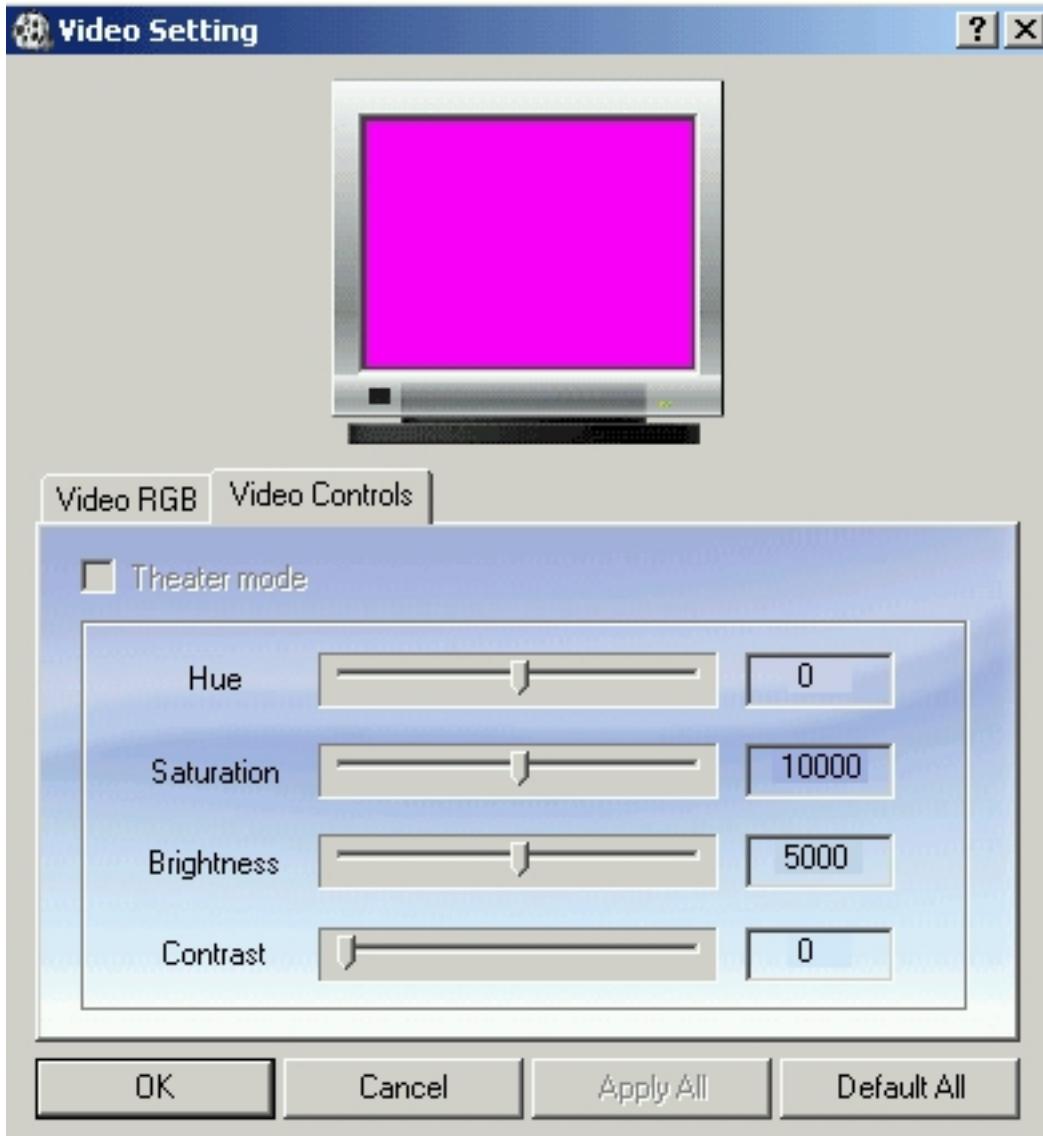
Wednesday, 28 July 2010 10:31 - Last Updated Saturday, 14 January 2012 11:12



XGI Volari V8

Written by Vlask

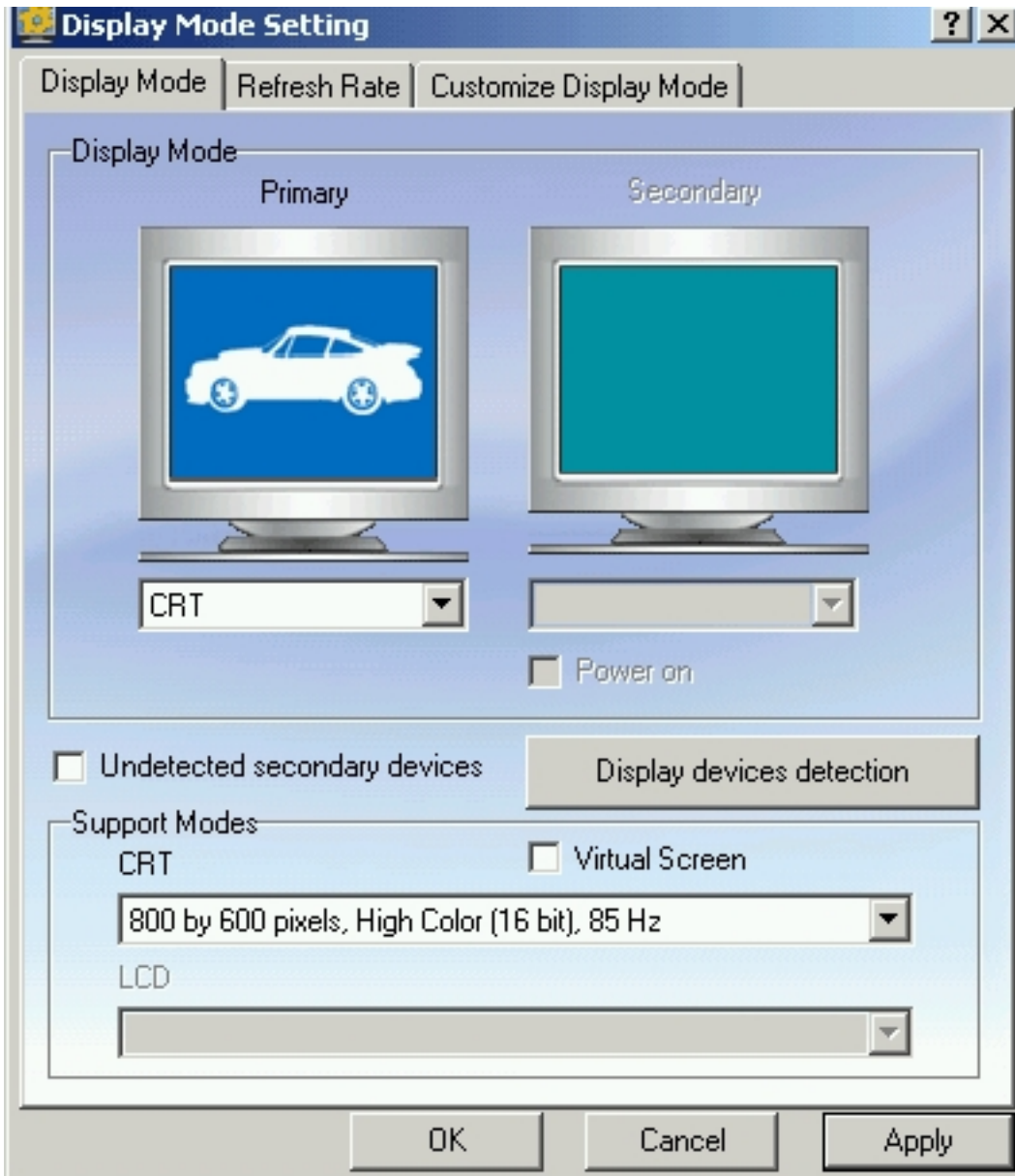
Wednesday, 28 July 2010 10:31 - Last Updated Saturday, 14 January 2012 11:12



XGI Volari V8

Written by Vlask

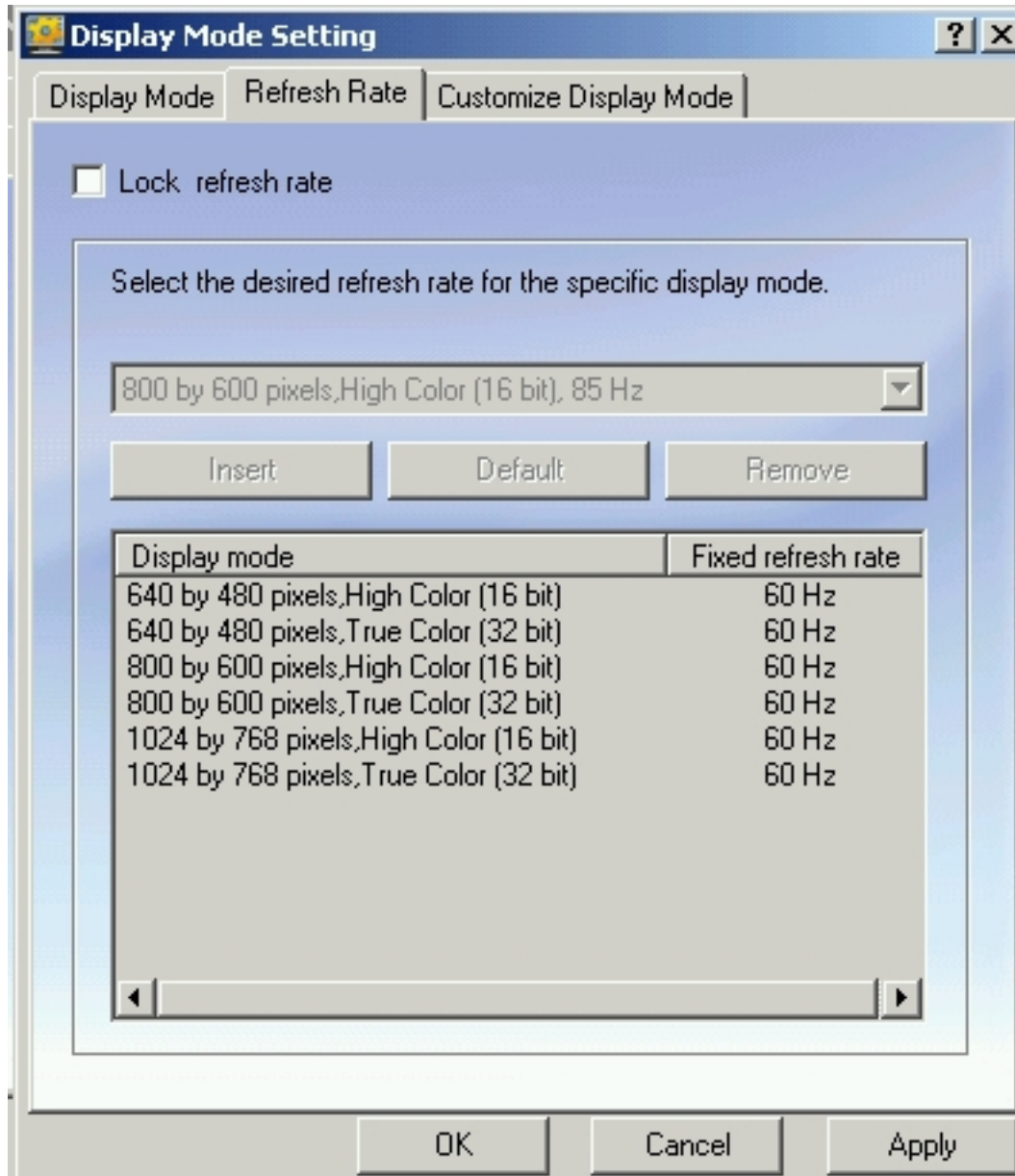
Wednesday, 28 July 2010 10:31 - Last Updated Saturday, 14 January 2012 11:12



XGI Volari V8

Written by Vlask

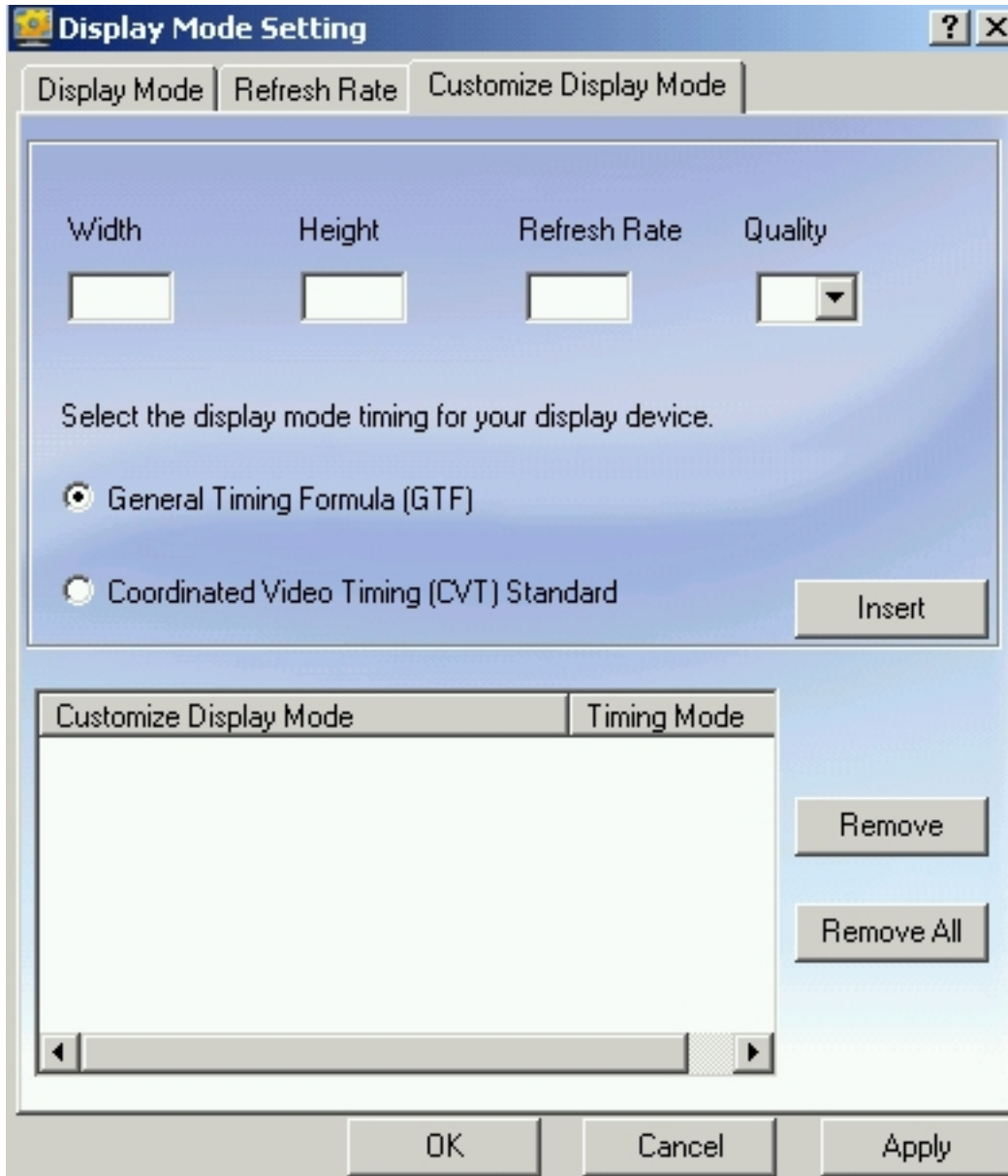
Wednesday, 28 July 2010 10:31 - Last Updated Saturday, 14 January 2012 11:12



XGI Volari V8

Written by Vlask

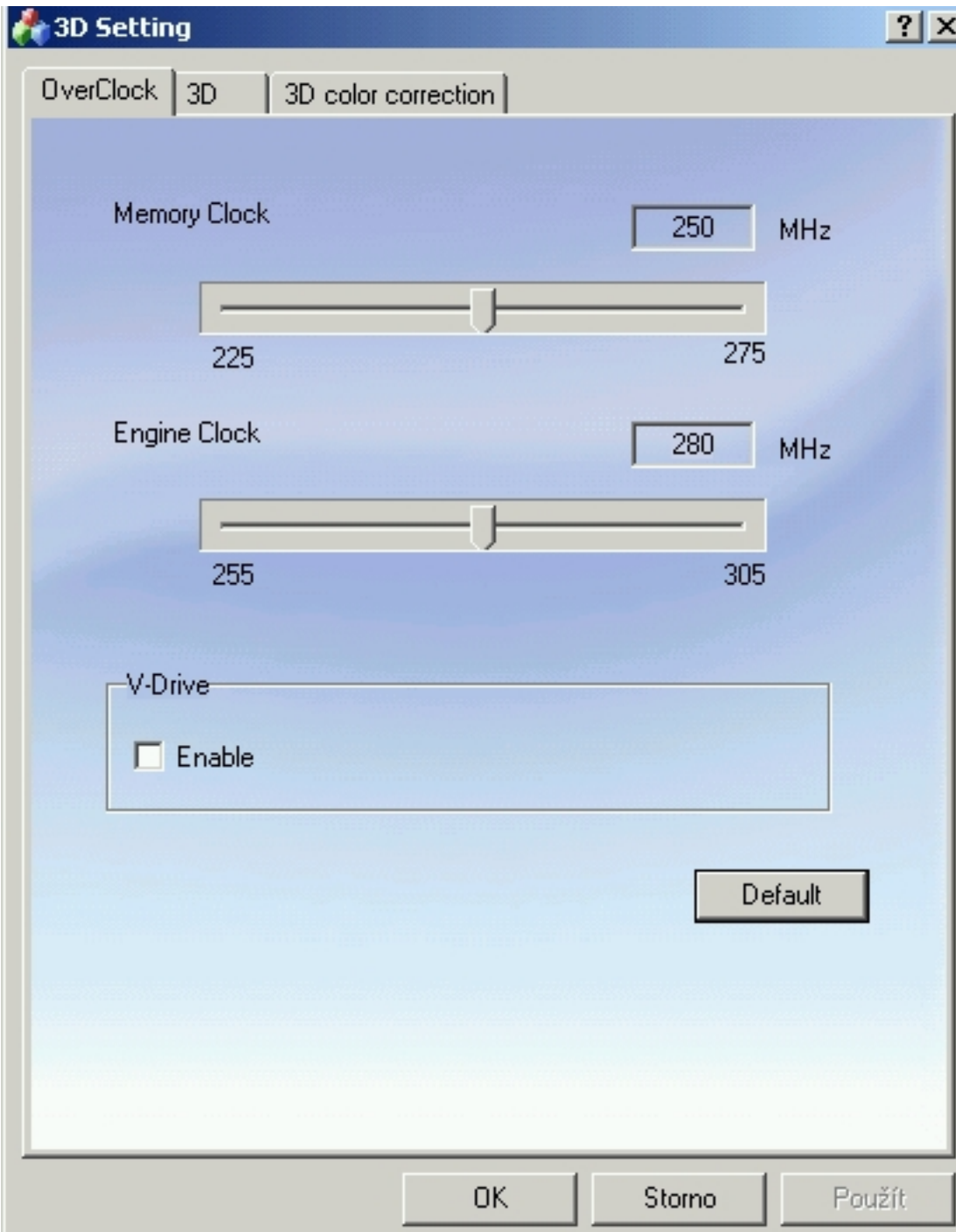
Wednesday, 28 July 2010 10:31 - Last Updated Saturday, 14 January 2012 11:12



XGI Volari V8

Written by Vlask

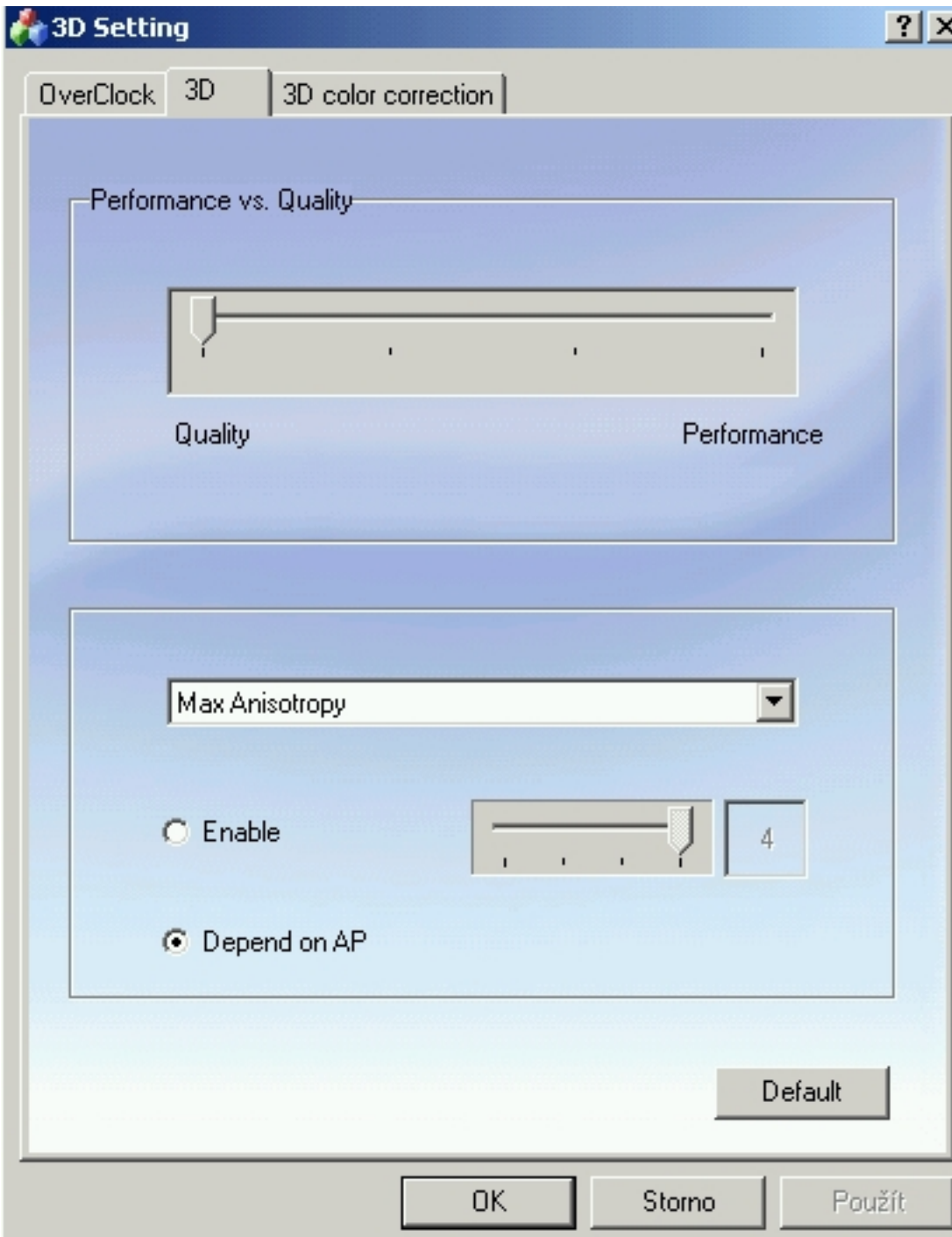
Wednesday, 28 July 2010 10:31 - Last Updated Saturday, 14 January 2012 11:12



XGI Volari V8

Written by Vlask

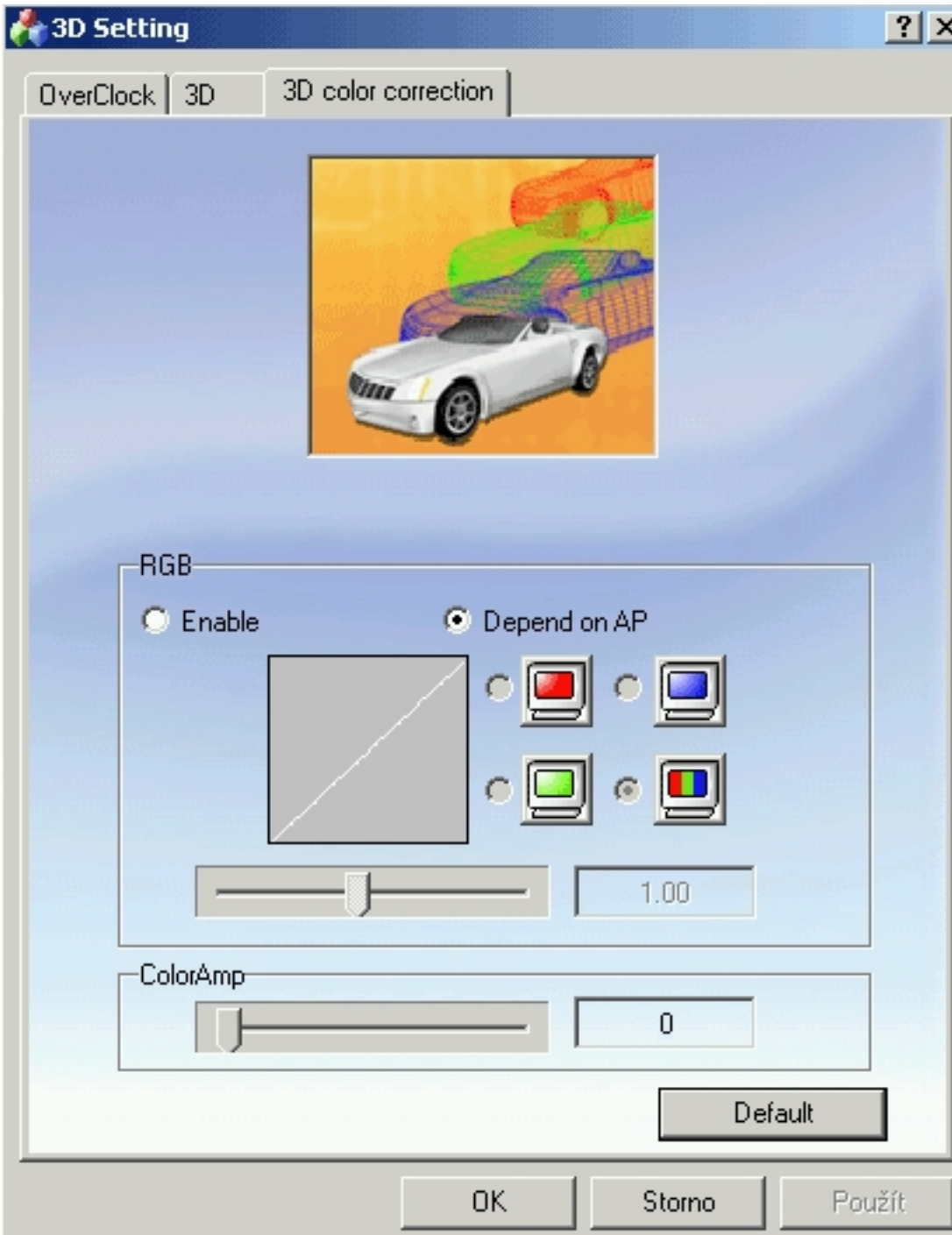
Wednesday, 28 July 2010 10:31 - Last Updated Saturday, 14 January 2012 11:12



XGI Volari V8

Written by Vlask

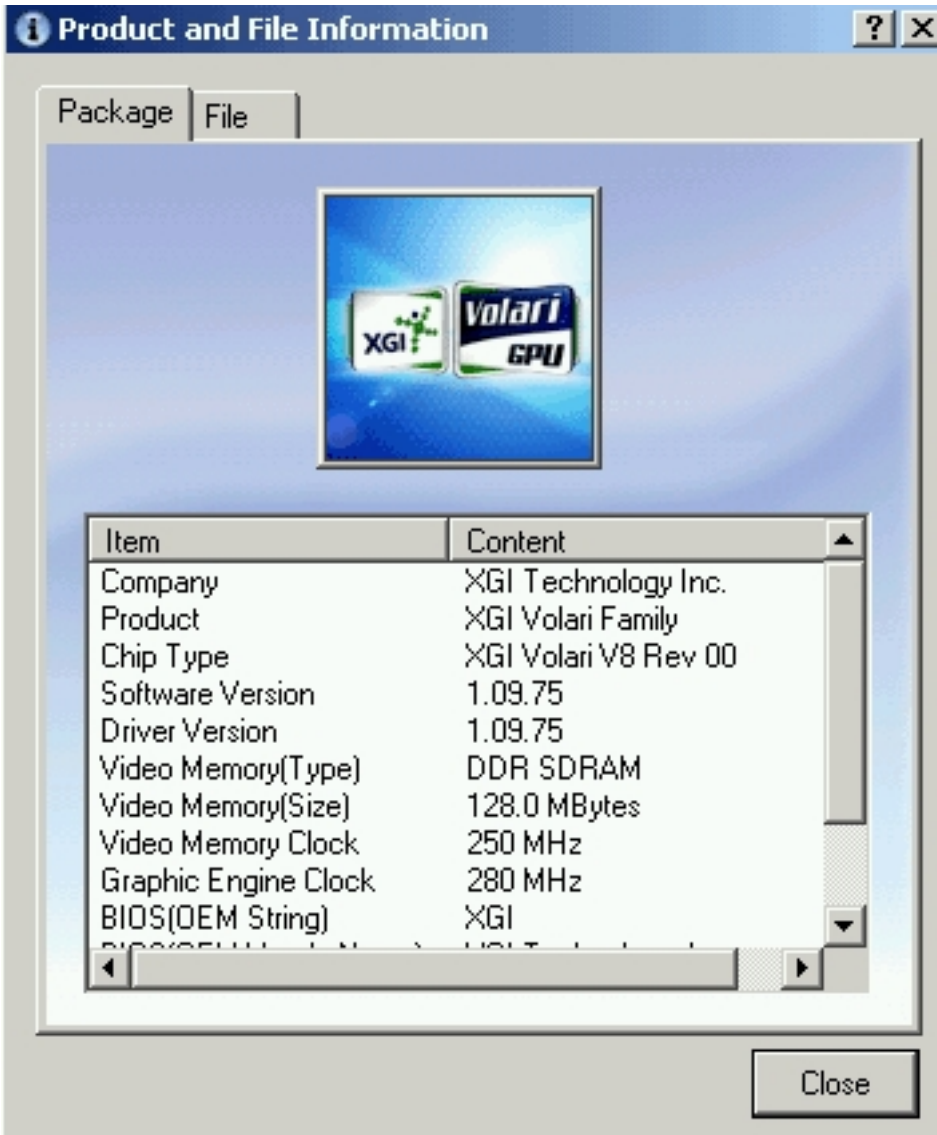
Wednesday, 28 July 2010 10:31 - Last Updated Saturday, 14 January 2012 11:12



XGI Volari V8

Written by Vlask

Wednesday, 28 July 2010 10:31 - Last Updated Saturday, 14 January 2012 11:12



The screenshot shows a Windows-style dialog box titled "Product and File Information". It has a blue header bar with a question mark icon and a close button. Below the header, there are two tabs: "Package" (selected) and "File". The main content area features a blue background with a central logo for "XGI Volari GPU". Below the logo is a table with two columns: "Item" and "Content". The table lists various system and software details. At the bottom right of the dialog is a "Close" button.

Item	Content
Company	XGI Technology Inc.
Product	XGI Volari Family
Chip Type	XGI Volari V8 Rev 00
Software Version	1.09.75
Driver Version	1.09.75
Video Memory(Type)	DDR SDRAM
Video Memory(Size)	128.0 MBytes
Video Memory Clock	250 MHz
Graphic Engine Clock	280 MHz
BIOS(OEM String)	XGI

XGI Volari V8

Written by Vlask

Wednesday, 28 July 2010 10:31 - Last Updated Saturday, 14 January 2012 11:12



{/webgallery}