

Rendition Vérité 2200

Written by Vlask

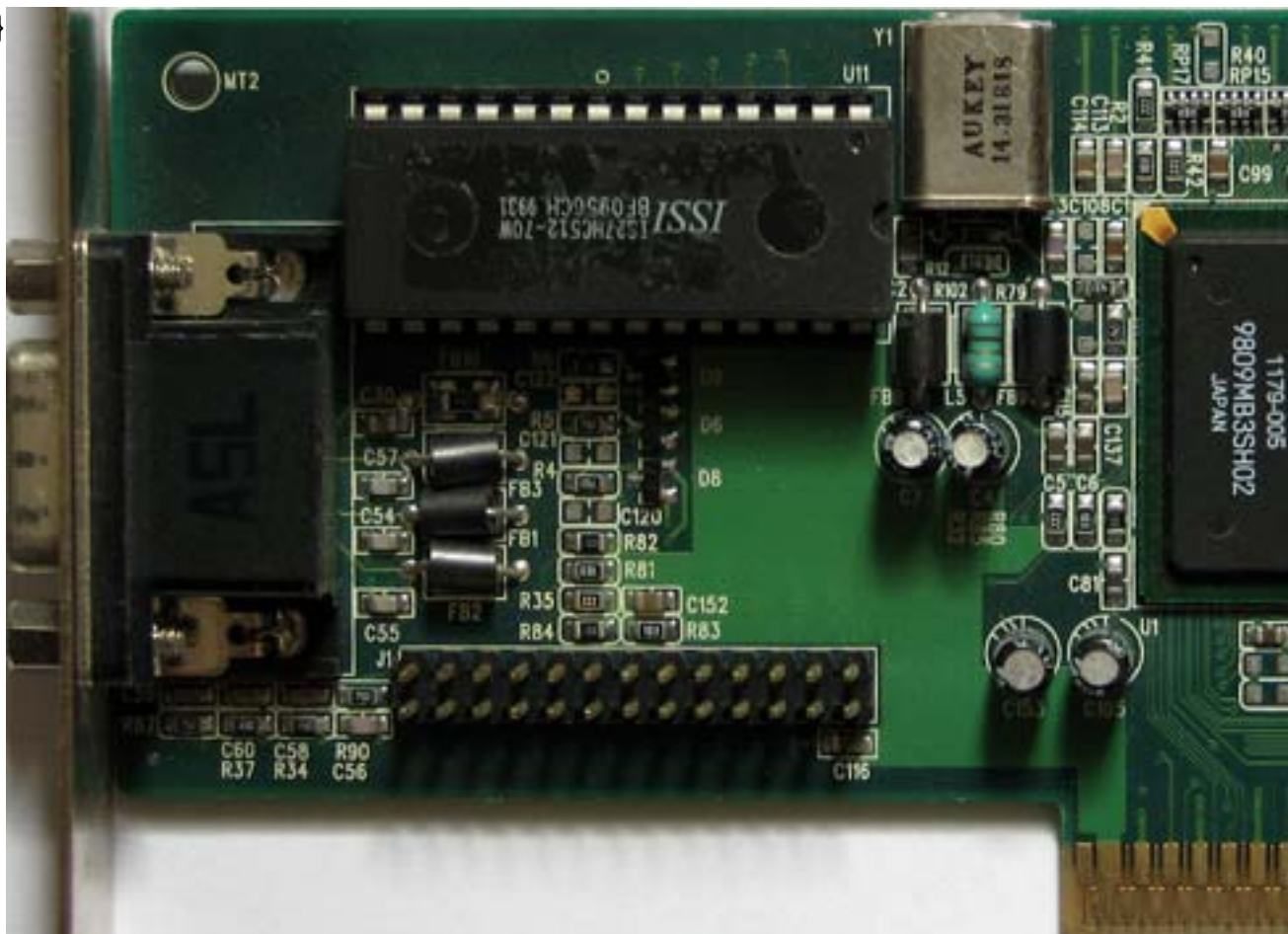
Saturday, 19 December 2009 20:31 - Last Updated Thursday, 25 July 2013 15:33



Core: Vérité 2200 55MHz 32bit
Memory: 8MB SGR 111MHz 64bit
Year: 1997 **Bus:** AGP 1x / PCI
Made: 0,35µm Japan **Links:** [Wikipedia](#) [Info](#) [Datasheet](#)

Bios: [Rendition](#)

{webgallery}



Rendition Vérité 2200

Written by Vlask

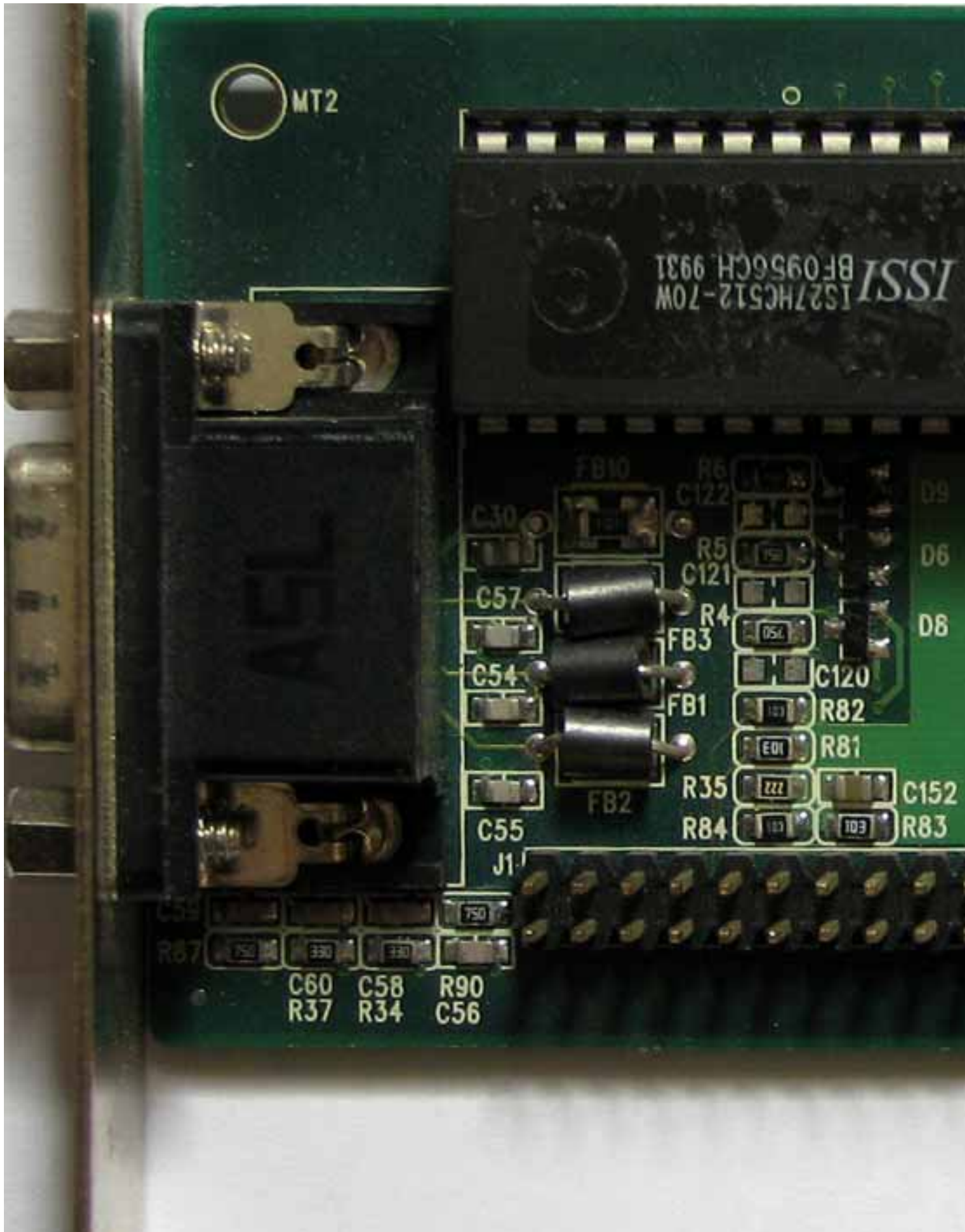
Saturday, 19 December 2009 20:31 - Last Updated Thursday, 25 July 2013 15:33



Rendition Vérité 2200

Written by Vlask

Saturday, 19 December 2009 20:31 - Last Updated Thursday, 25 July 2013 15:33



Rendition Vérité 2200

Written by Vlask

Saturday, 19 December 2009 20:31 - Last Updated Thursday, 25 July 2013 15:33

Rendition Vérité 2200

Written by Vlask

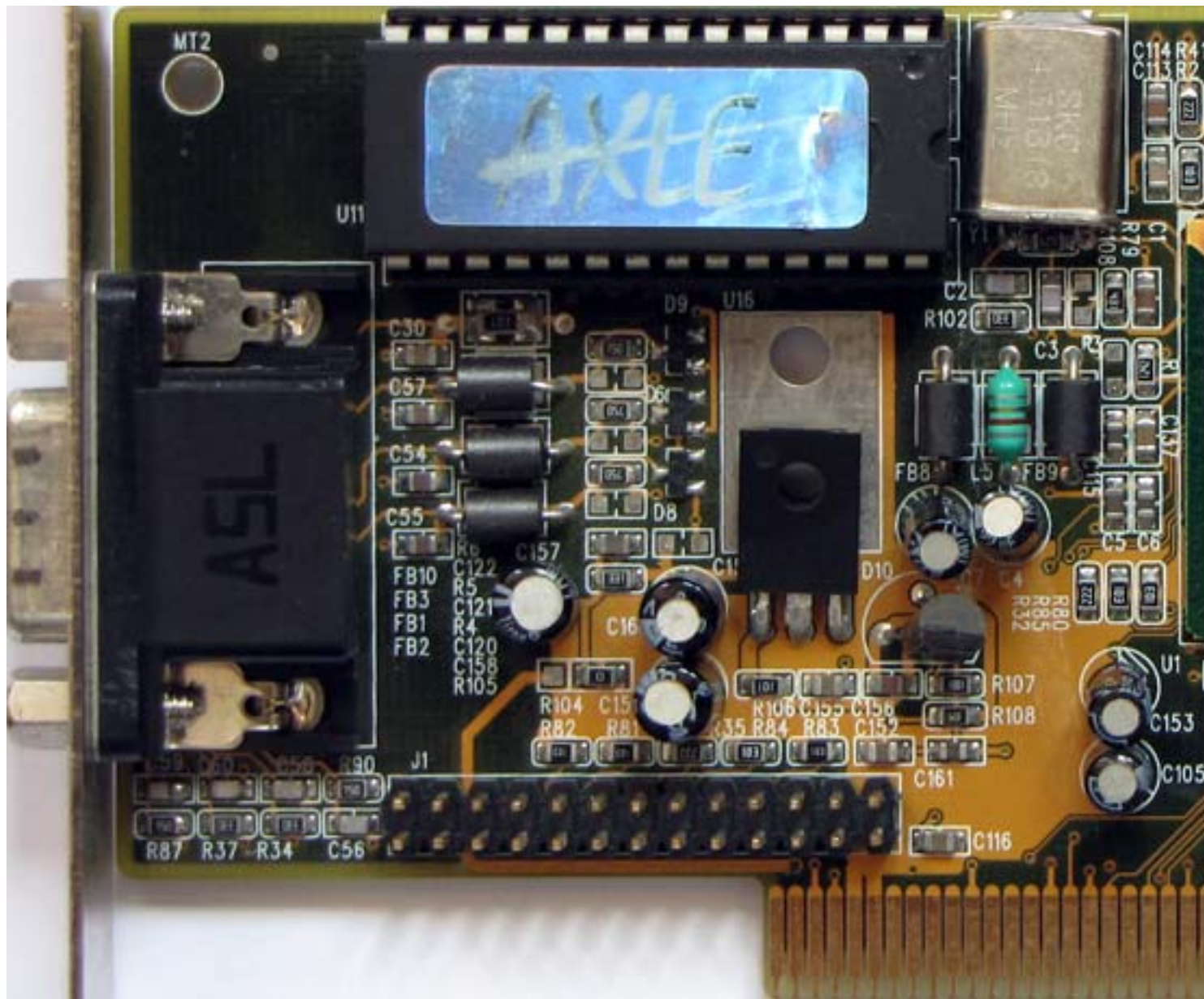
Saturday, 19 December 2009 20:31 - Last Updated Thursday, 25 July 2013 15:33



Rendition Vérité 2200

Written by Vlask

Saturday, 19 December 2009 20:31 - Last Updated Thursday, 25 July 2013 15:33



Rendition Vérité 2200

Written by Vlask

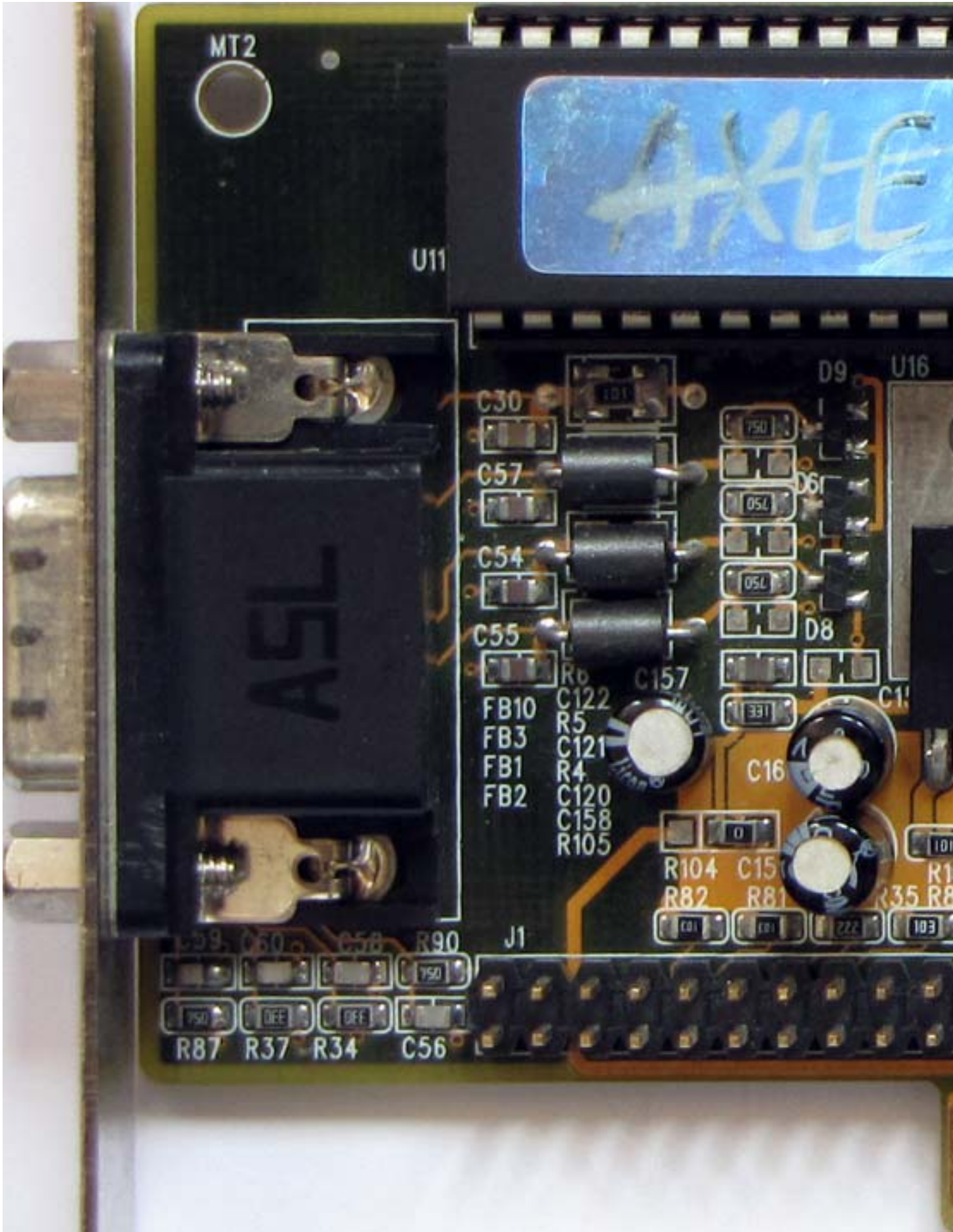
Saturday, 19 December 2009 20:31 - Last Updated Thursday, 25 July 2013 15:33



Rendition Vérité 2200

Written by Vlask

Saturday, 19 December 2009 20:31 - Last Updated Thursday, 25 July 2013 15:33



Rendition Vérité 2200

Written by Vlask

Saturday, 19 December 2009 20:31 - Last Updated Thursday, 25 July 2013 15:33

Rendition Vérité 2200

Written by Vlask

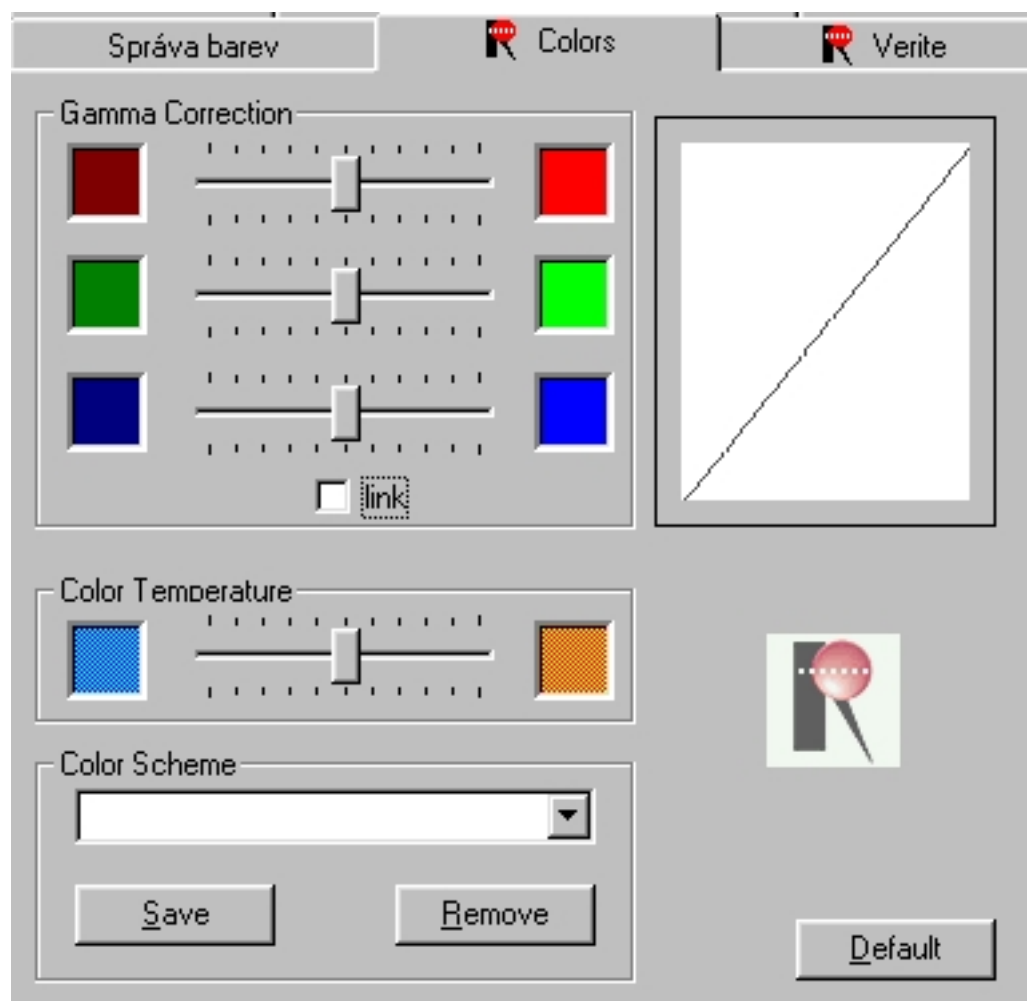
Saturday, 19 December 2009 20:31 - Last Updated Thursday, 25 July 2013 15:33



Rendition Vérité 2200

Written by Vlask





Saturday, 19 December 2009 20:31 - Last Updated Thursday, 25 July 2013 15:33



Rendition Vérité 2200

Written by Vlask

Saturday, 19 December 2009 20:31 - Last Updated Thursday, 25 July 2013 15:33

Správa barev		Colors	Verite
Info Board: V2200B3 (8MB) Driver: 4.11.01.5176 Bios: 1.61 Encoder: (None) Features: May 10 1999		Bilinear Filter <input checked="" type="radio"/> Auto <input type="radio"/> Always On <input type="radio"/> Always Off	Direct Draw <input type="checkbox"/> MipMap <input checked="" type="checkbox"/> VSync
<input checked="" type="checkbox"/> CRTC Position:  Size: 		Refresh Rate [70] <input type="radio"/> Default <input checked="" type="radio"/> Predefined: <input type="text" value="70"/> <input type="radio"/> Optimal <input type="radio"/> Custom: <input type="text" value=""/> Hz	
<input type="checkbox"/> IV  		<input type="checkbox"/> Flicker Filter <input checked="" type="radio"/> NTSC <input type="radio"/> PAL	<input checked="" type="radio"/> Fullscan <input type="radio"/> Underscan
<input type="button" value="Default"/>			

{/webgallery}