

ATi Radeon HD5450

Written by Zaatharen

Monday, 08 April 2013 22:43 - Last Updated Saturday, 17 May 2014 01:29



Core: Cedar Pro 650MHz 128bit

Memory: 512MB DDR3 1334MHz 64bit **Year:** 2010 **Bus:** PCI-E16x 2.1 **Made:** 40nm **Transistors:** 292 million

Pixel Pipelines: 4 **TMUs:** 8 **DirectX:** 11 **Unified shaders:** 80 (v 5.0) **Memory bandwidth:** 10,4 GB/s

Pixel Fillrate:

2600 MPixel/s

Texel Fillrate:

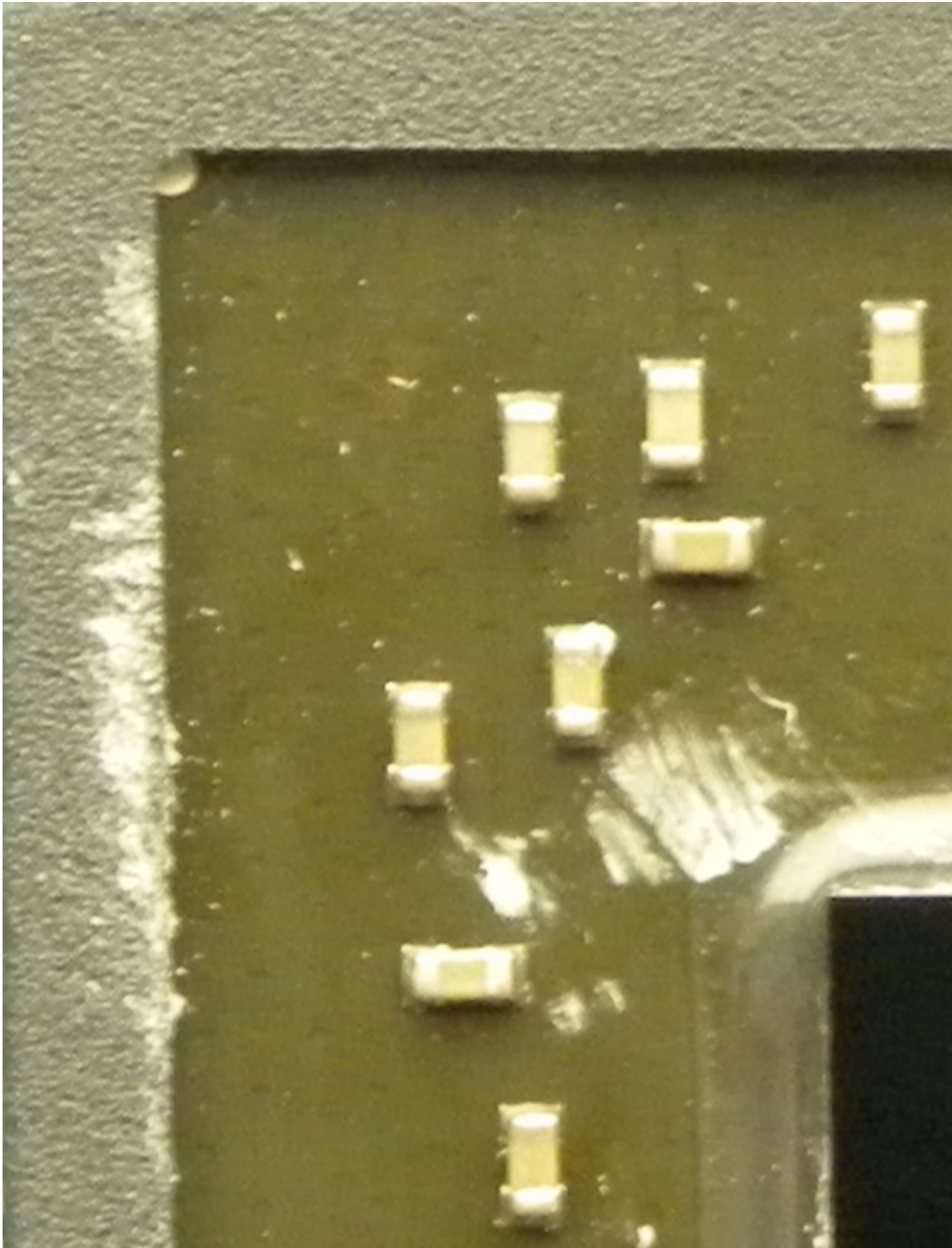
5200 MTexel/s

{webgallery}

ATi Radeon HD5450

Written by Zaatharen

Monday, 08 April 2013 22:43 - Last Updated Saturday, 17 May 2014 01:29



ATi Radeon HD5450

Written by Zaatharen

Monday, 08 April 2013 22:43 - Last Updated Saturday, 17 May 2014 01:29



ATi Radeon HD5450

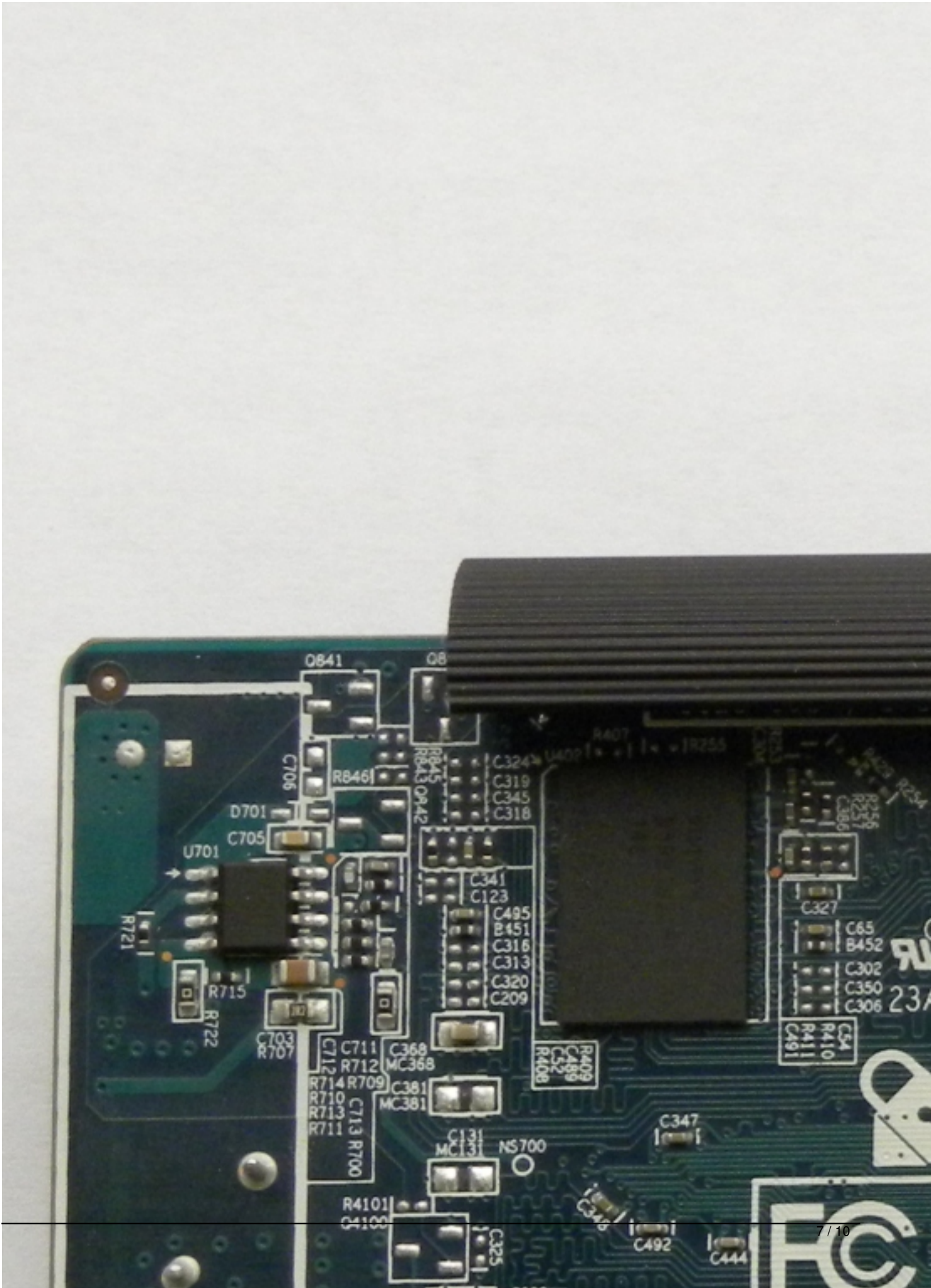
Written by Zaatharen

Monday, 08 April 2013 22:43 - Last Updated Saturday, 17 May 2014 01:29

ATi Radeon HD5450

Written by Zaatharen

Monday, 08 April 2013 22:43 - Last Updated Saturday, 17 May 2014 01:29



ATi Radeon HD5450

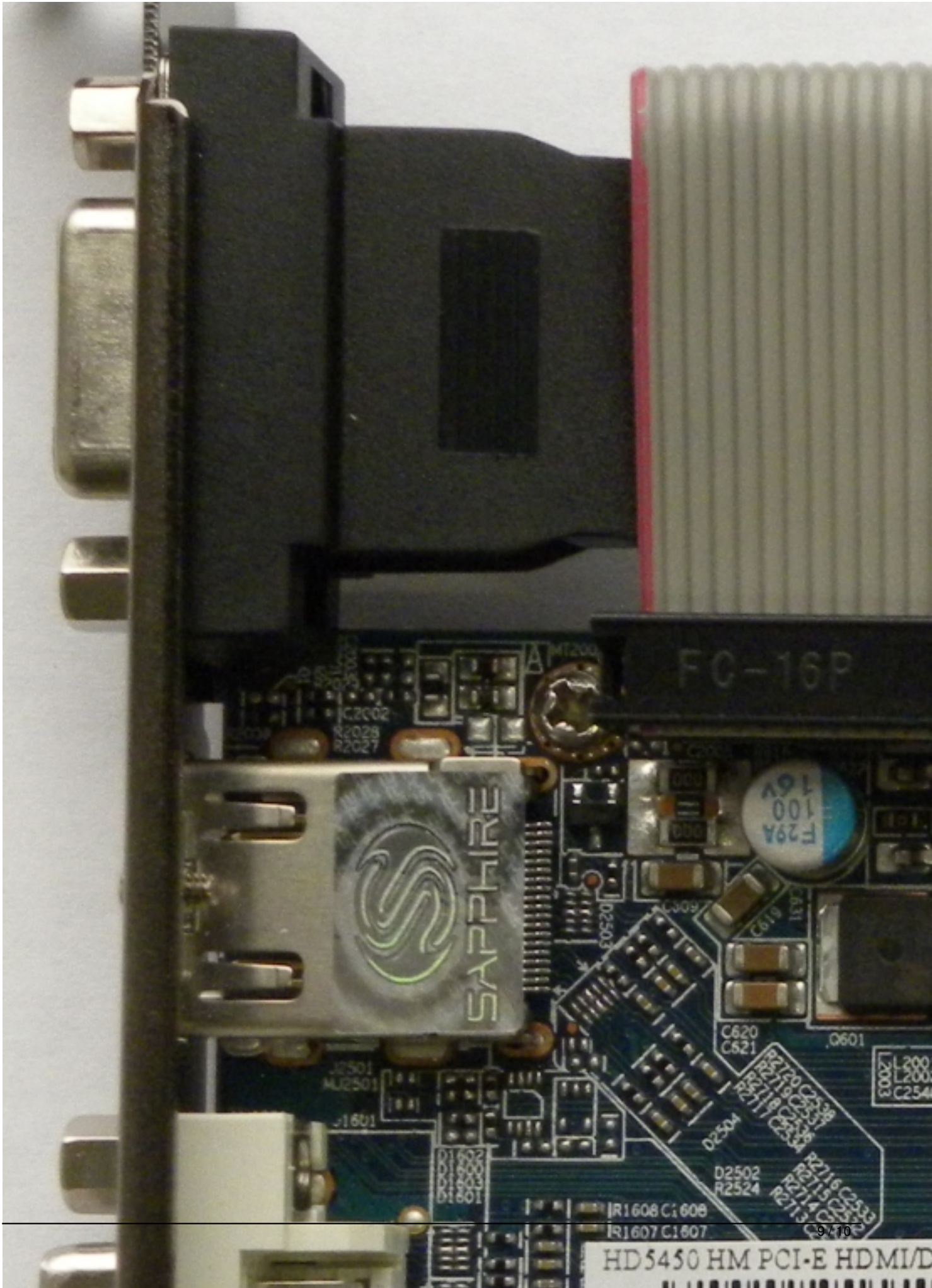
Written by Zaatharen

Monday, 08 April 2013 22:43 - Last Updated Saturday, 17 May 2014 01:29

ATi Radeon HD5450

Written by Zaatharen

Monday, 08 April 2013 22:43 - Last Updated Saturday, 17 May 2014 01:29



ATi Radeon HD5450

Written by Zaatharen

Monday, 08 April 2013 22:43 - Last Updated Saturday, 17 May 2014 01:29

{/webgallery}