

ATi Radeon X1600 XT

Written by Zaatharen

Friday, 25 April 2014 12:46 - Last Updated Friday, 25 April 2014 13:03



Core: RV530 XT 588MHz 256bit

Memory: 256MB 1400MHz GDDR3 128bit **Year:** 2006 **Bus:** PCI-E 16x **Made:** 90nm **Transistors:** 15

7 milion

Pixel pipelines: 12 **TMU per pipeline:** 1 **Vertex shaders:** 5 (v 3.0) **Pixel Shaders:** 12 (v 3.0)

DirectX:

9.0c

Memory bandwidth:

22,2 GB/s

Pixel write speed:

7044 MPixel/s

Texel write speed:

7044

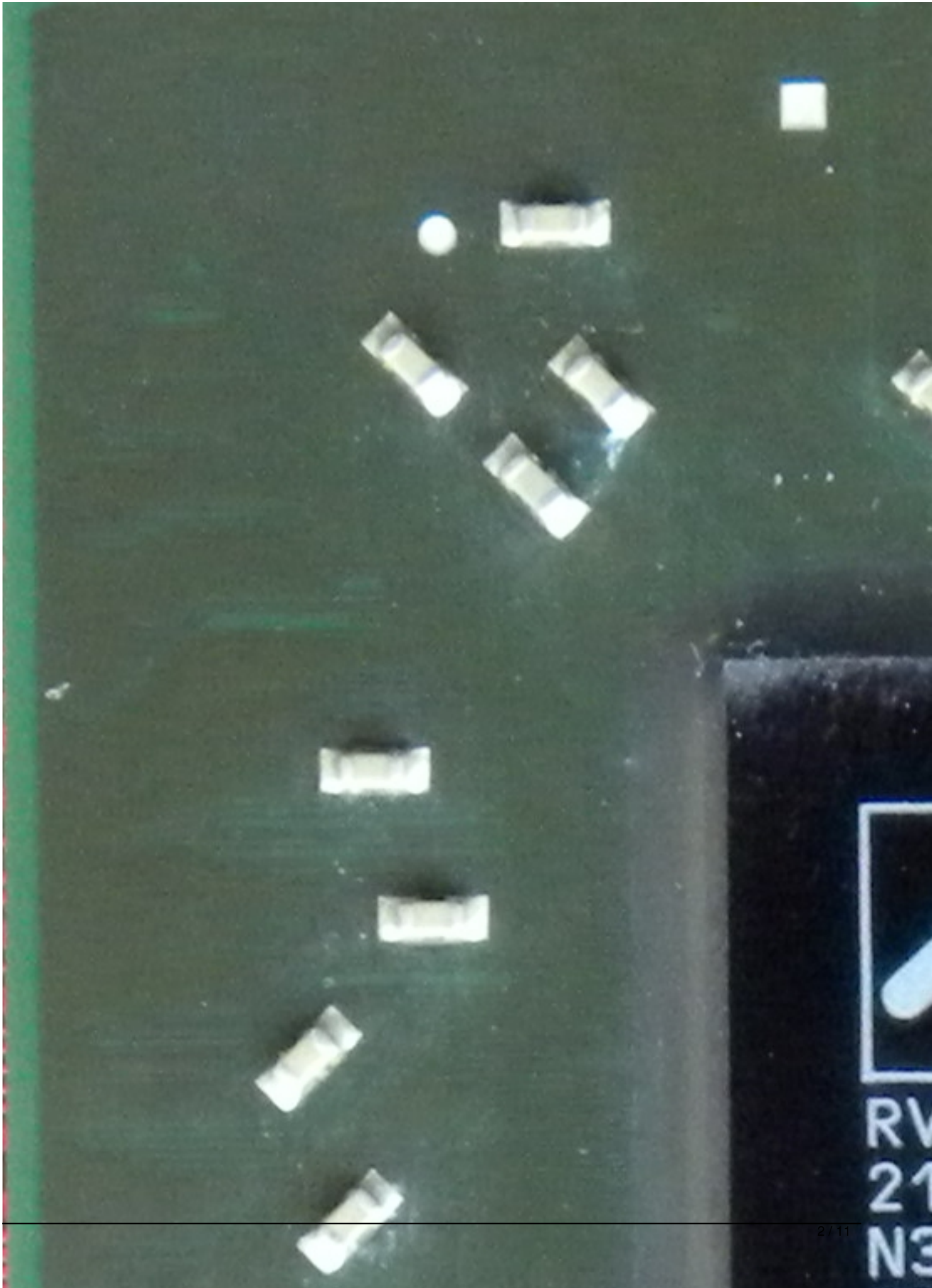
MTexel/s

{webgallery}

ATi Radeon X1600 XT

Written by Zaatharen

Friday, 25 April 2014 12:46 - Last Updated Friday, 25 April 2014 13:03



RV
21
N3

ATi Radeon X1600 XT

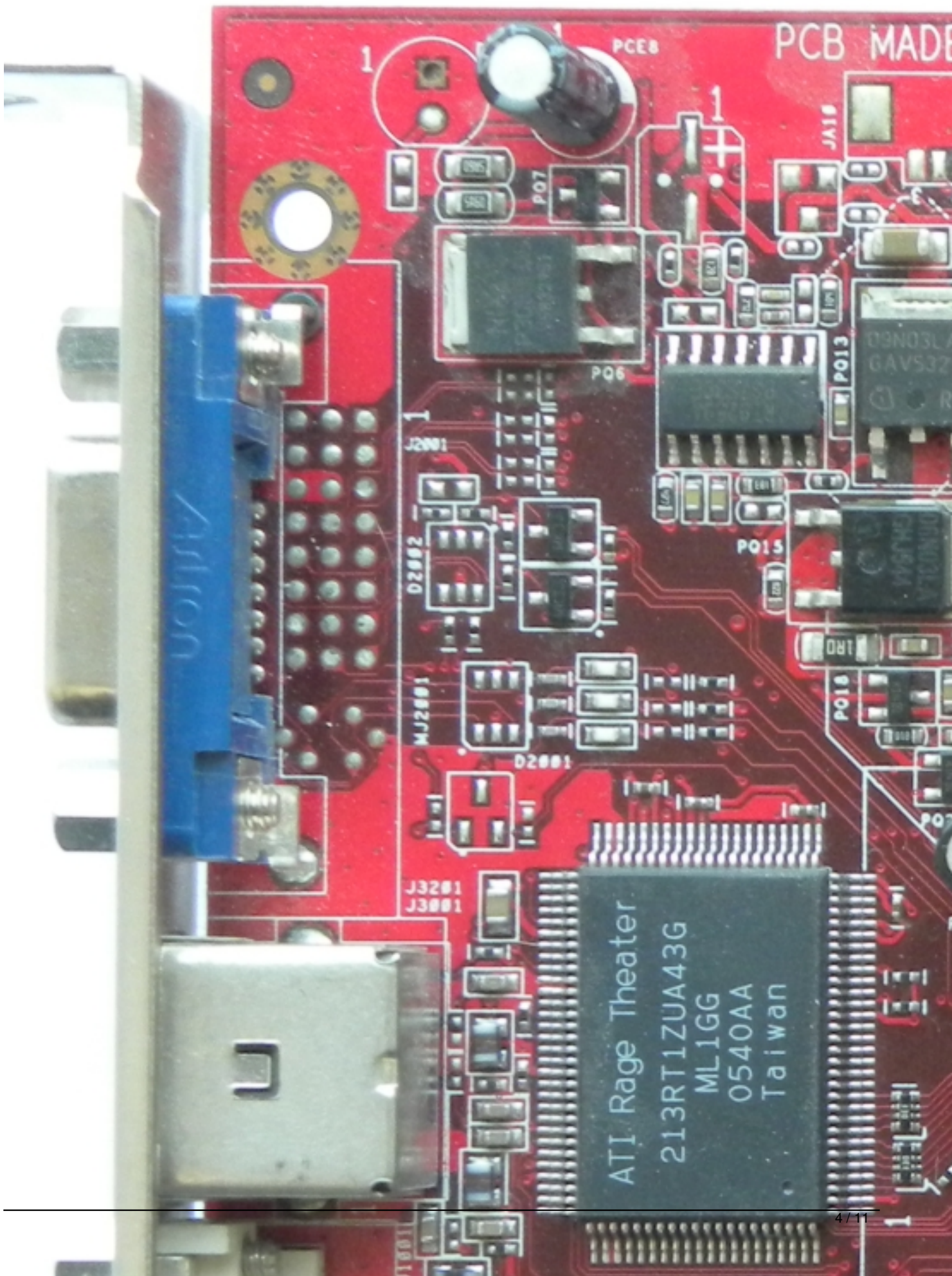
Written by Zaatharen

Friday, 25 April 2014 12:46 - Last Updated Friday, 25 April 2014 13:03

ATi Radeon X1600 XT

Written by Zaatharen

Friday, 25 April 2014 12:46 - Last Updated Friday, 25 April 2014 13:03



ATi Radeon X1600 XT

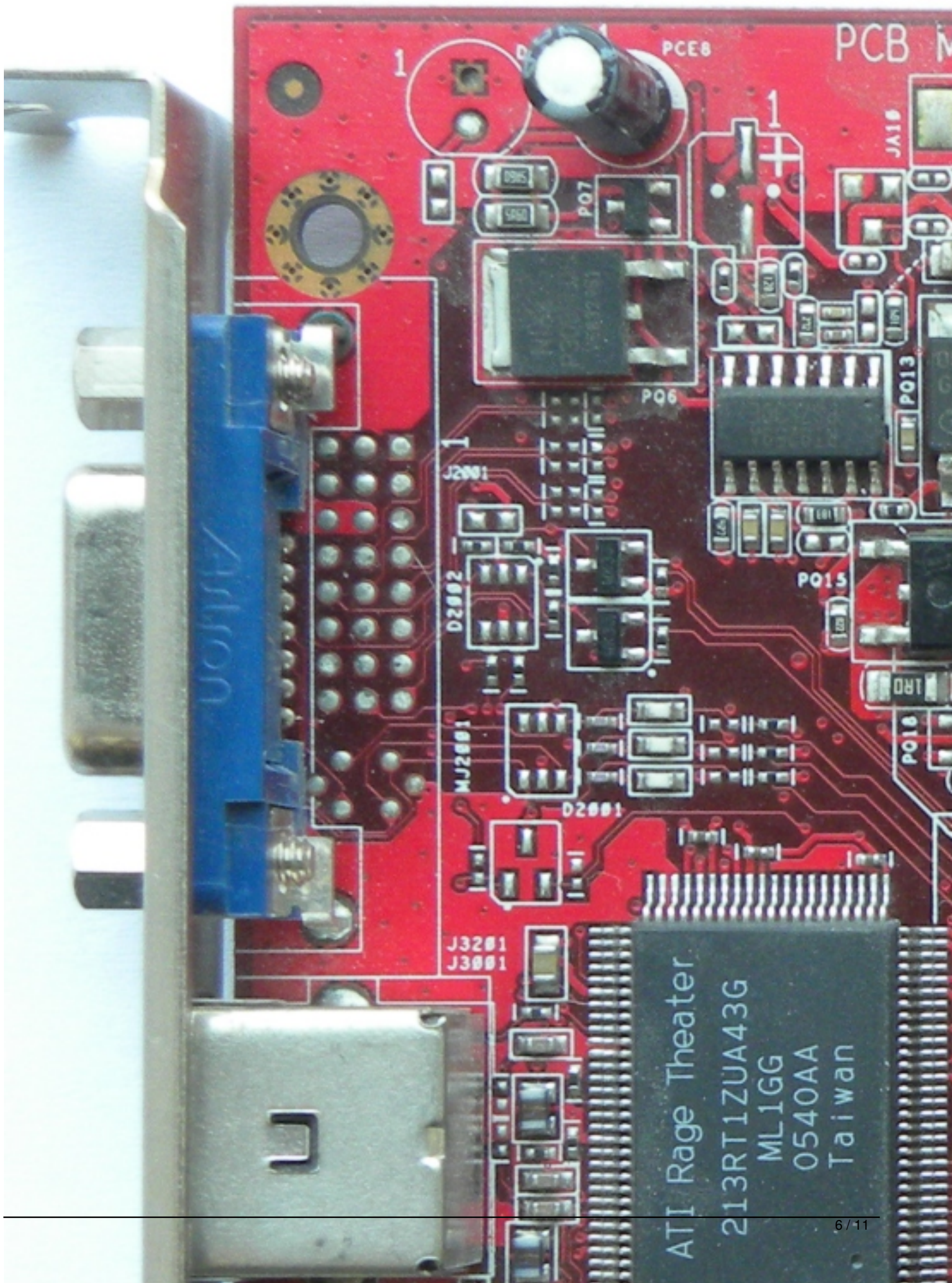
Written by Zaatharen

Friday, 25 April 2014 12:46 - Last Updated Friday, 25 April 2014 13:03

ATi Radeon X1600 XT

Written by Zaatharen

Friday, 25 April 2014 12:46 - Last Updated Friday, 25 April 2014 13:03



ATi Radeon X1600 XT

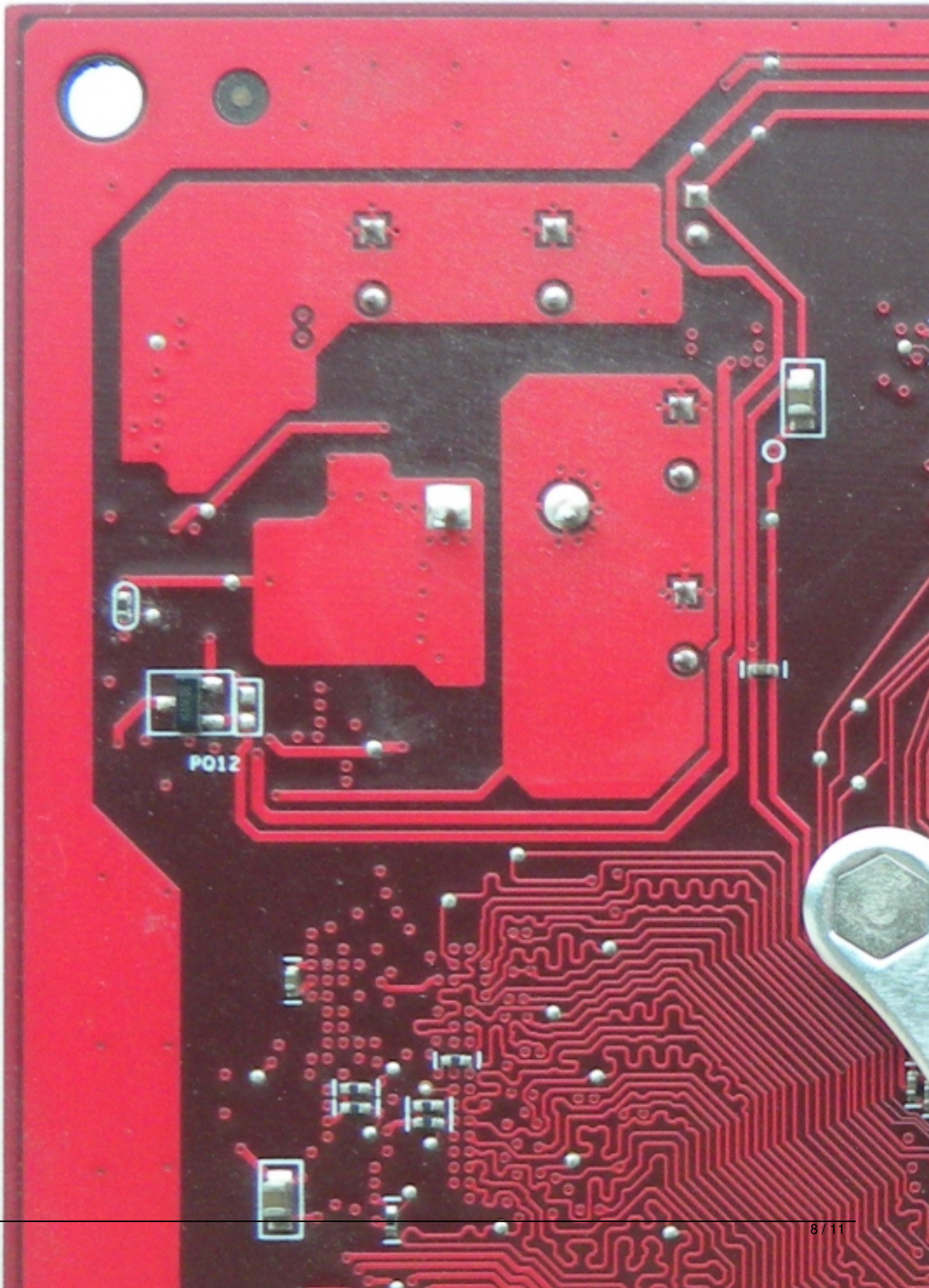
Written by Zaatharen

Friday, 25 April 2014 12:46 - Last Updated Friday, 25 April 2014 13:03

ATi Radeon X1600 XT

Written by Zaatharen

Friday, 25 April 2014 12:46 - Last Updated Friday, 25 April 2014 13:03



ATi Radeon X1600 XT

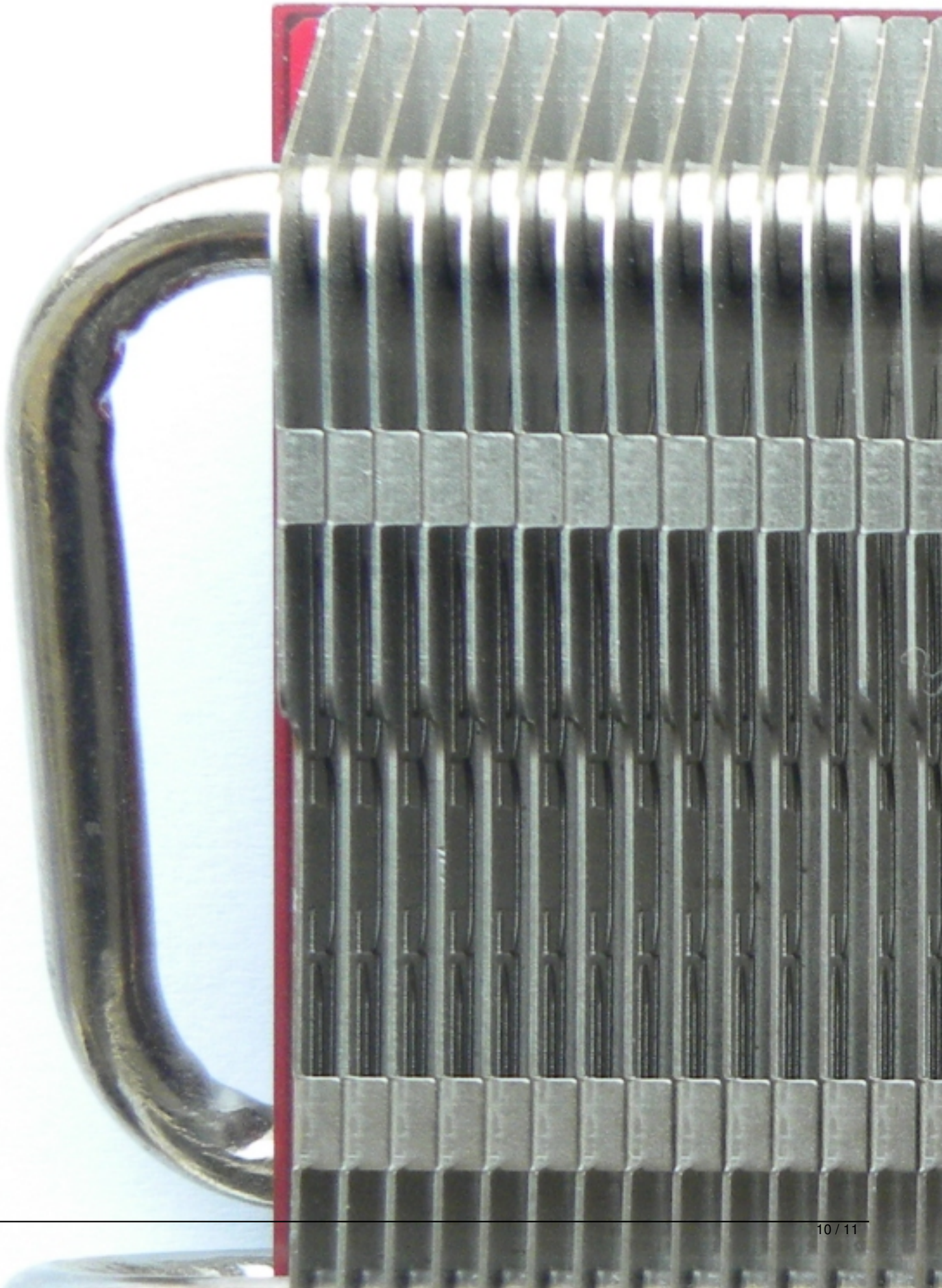
Written by Zaatharen

Friday, 25 April 2014 12:46 - Last Updated Friday, 25 April 2014 13:03

ATi Radeon X1600 XT

Written by Zaatharen

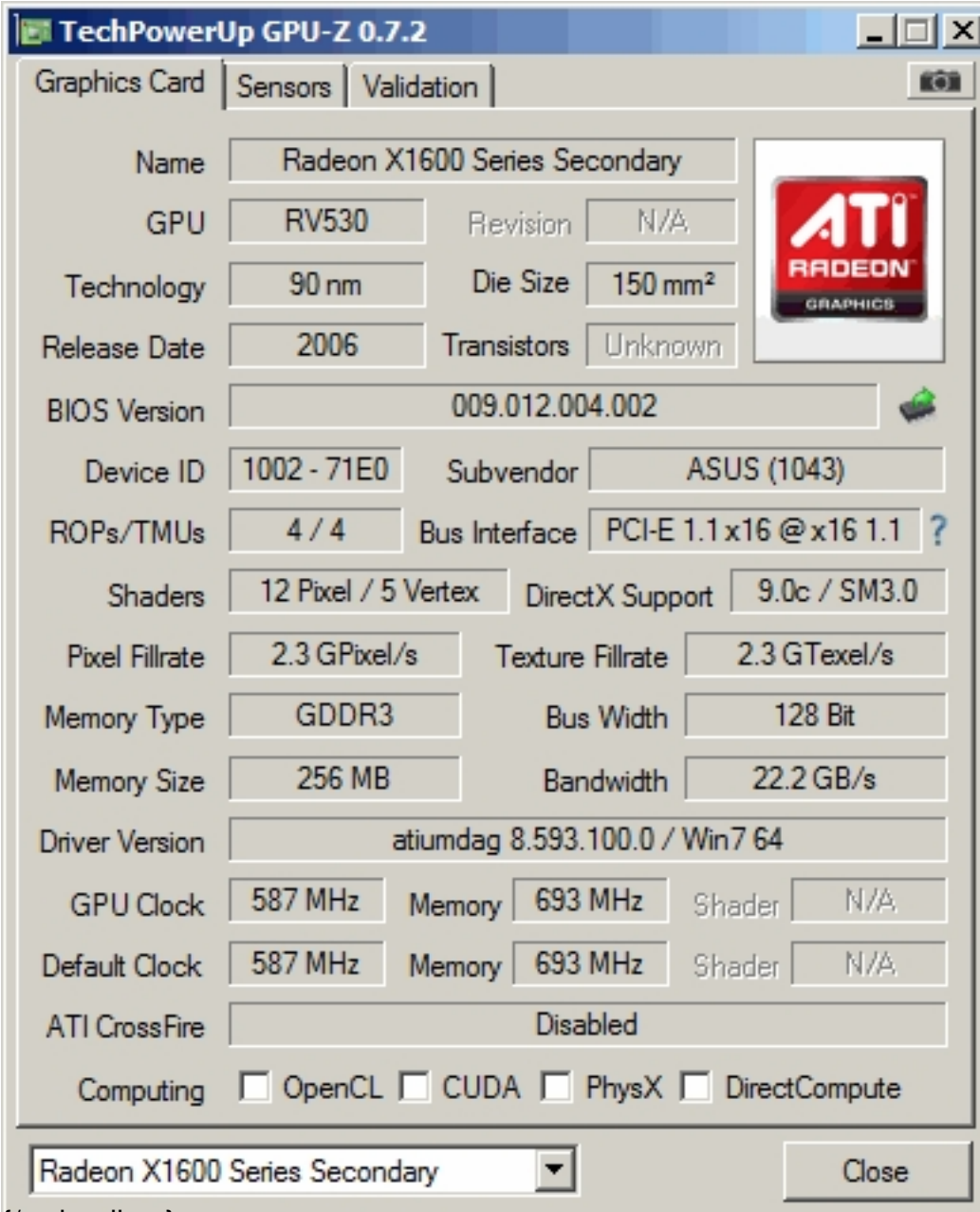
Friday, 25 April 2014 12:46 - Last Updated Friday, 25 April 2014 13:03



ATi Radeon X1600 XT

Written by Zaatharen

Friday, 25 April 2014 12:46 - Last Updated Friday, 25 April 2014 13:03



The screenshot displays the TechPowerUp GPU-Z 0.7.2 application window. The 'Graphics Card' tab is active, showing the following specifications:

Category	Value
Name	Radeon X1600 Series Secondary
GPU	RV530
Revision	N/A
Technology	90 nm
Die Size	150 mm ²
Release Date	2006
Transistors	Unknown
BIOS Version	009.012.004.002
Device ID	1002 - 71E0
Subvendor	ASUS (1043)
ROPs/TMUs	4 / 4
Bus Interface	PCI-E 1.1 x16 @ x16 1.1
Shaders	12 Pixel / 5 Vertex
DirectX Support	9.0c / SM3.0
Pixel Fillrate	2.3 GPixel/s
Texture Fillrate	2.3 GTexel/s
Memory Type	GDDR3
Bus Width	128 Bit
Memory Size	256 MB
Bandwidth	22.2 GB/s
Driver Version	atiumdag 8.593.100.0 / Win7 64
GPU Clock	587 MHz
Memory Clock	693 MHz
Shader Clock	N/A
Default GPU Clock	587 MHz
Default Memory Clock	693 MHz
Default Shader Clock	N/A
ATI CrossFire	Disabled
Computing	<input type="checkbox"/> OpenCL <input type="checkbox"/> CUDA <input type="checkbox"/> PhysX <input type="checkbox"/> DirectCompute

At the bottom of the window, there is a dropdown menu showing 'Radeon X1600 Series Secondary' and a 'Close' button.

{/webgallery}