

ATi Mach64 CT

Written by Zaatharen

Saturday, 25 September 2010 23:46 - Last Updated Sunday, 26 September 2010 00:06



Core: ATi Mach64 215CT22200 45MHz

Memory: 2MB EDO 50MHz **Year:** 1995 **Bus:** PCI

Note: I uploaded GPU-Z screenshot just for fun, dont take it serious. GPU-Z is quite full of mistakes when detecting older cards.

{webgallery}

ATi Mach64 CT

Written by Zaatharen

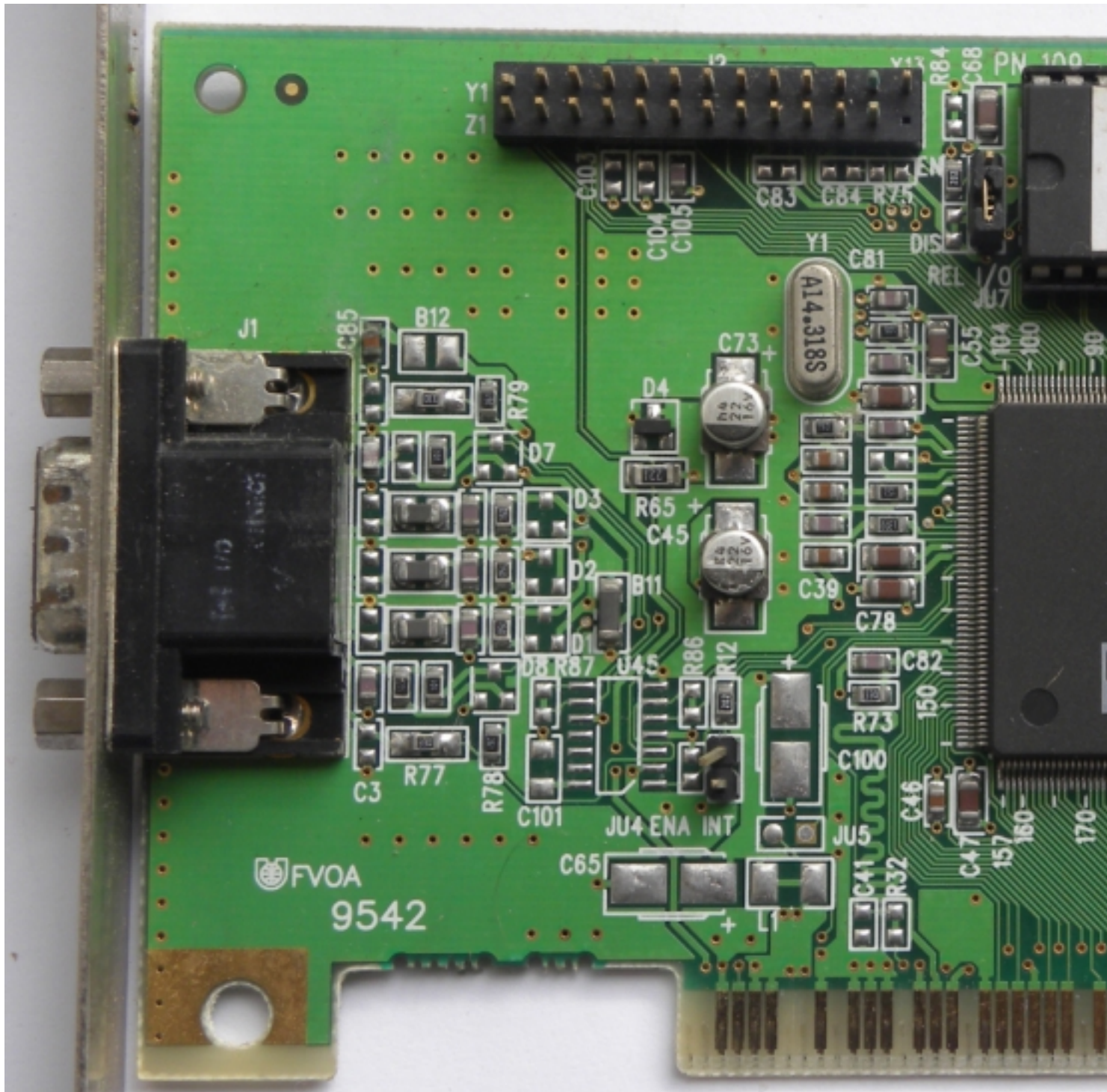
Saturday, 25 September 2010 23:46 - Last Updated Sunday, 26 September 2010 00:06



ATi Mach64 CT

Written by Zaatharen

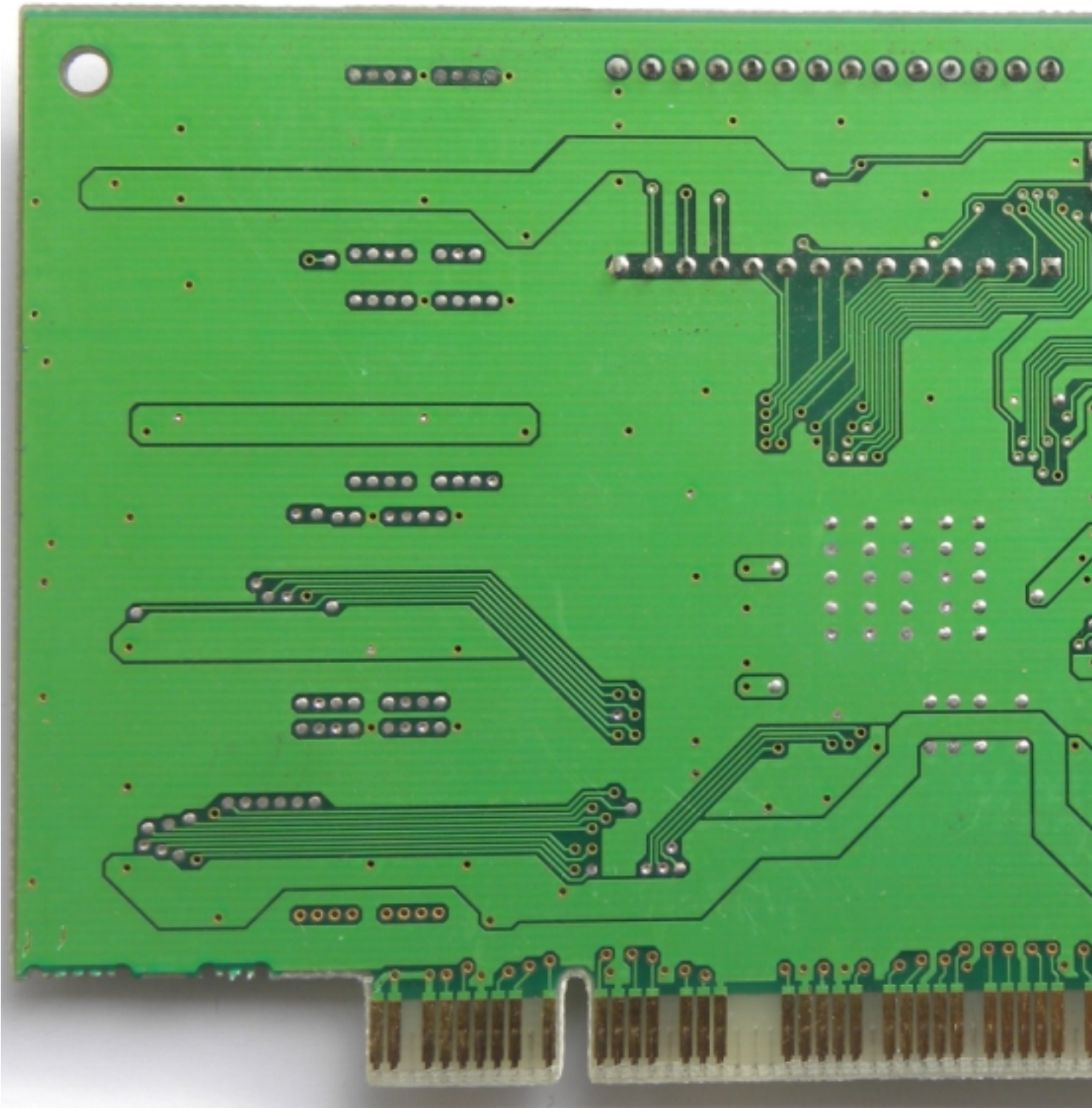
Saturday, 25 September 2010 23:46 - Last Updated Sunday, 26 September 2010 00:06



ATi Mach64 CT

Written by Zaatharen

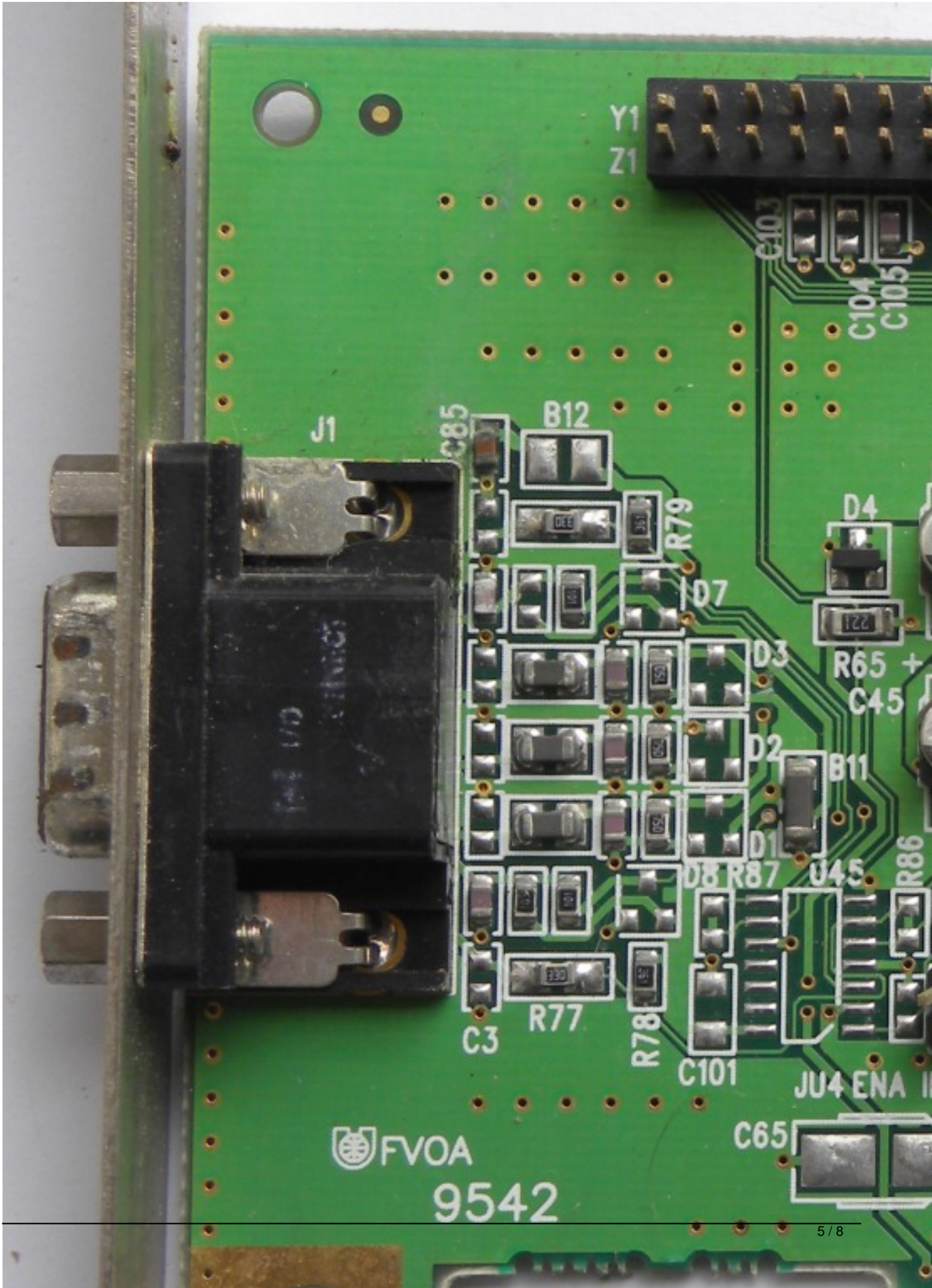
Saturday, 25 September 2010 23:46 - Last Updated Sunday, 26 September 2010 00:06



ATi Mach64 CT

Written by Zaatharen

Saturday, 25 September 2010 23:46 - Last Updated Sunday, 26 September 2010 00:06



ATi Mach64 CT

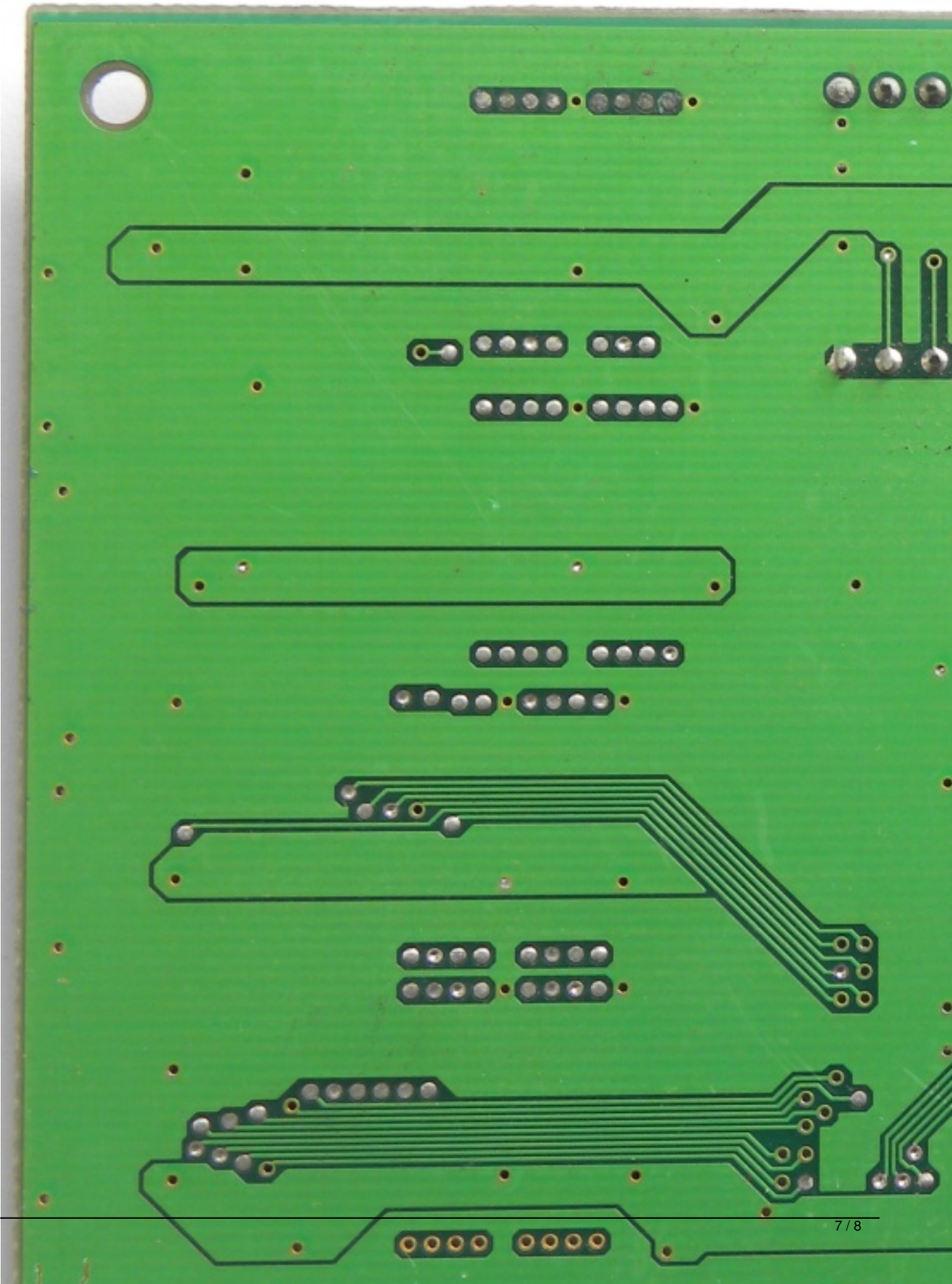
Written by Zaatharen

Saturday, 25 September 2010 23:46 - Last Updated Sunday, 26 September 2010 00:06

ATi Mach64 CT

Written by Zaatharen

Saturday, 25 September 2010 23:46 - Last Updated Sunday, 26 September 2010 00:06



ATI Mach64 CT

Written by Zaatharen

Saturday, 25 September 2010 23:46 - Last Updated Sunday, 26 September 2010 00:06

The screenshot shows the TechPowerUp GPU-Z 0.4.4 application window. The main display area is titled 'ATI Technologies Inc. mach64 CT PCI' and features an ATI RADEON GRAPHICS logo. The interface is organized into several sections:

- Graphics Card:** Name (ATI Technologies Inc. mach64 CT PCI), GPU (4354), Revision (N/A), Technology (Unknown), Die Size (Unknown), Release Date (Unknown), Transistors (Unknown).
- BIOS Version:** II
- Device ID:** 1002 - 4354, Subvendor: Undefined (0000)
- ROPs:** Unknown, Bus Interface: PCI
- Shaders:** Unified, DirectX Support: Unknown
- Pixel Fillrate:** Unknown, Texture Fillrate: Unknown
- Memory Type:** DDR, Bus Width: 32 Bit
- Memory Size:** 3840 MB, Bandwidth: 18.0 GB/s
- Driver Version:** ati2mtag 5.1.2535.0 / XP
- Clocks:** GPU Clock (0 MHz), Memory (2256 MHz), Shader (empty); Default Clock (508 MHz), Memory (514 MHz), Shader (empty)
- ATI CrossFire:** Disabled
- Computing:** OpenCL, CUDA, PhysX, DirectCompute (all unchecked)

At the bottom, there is a dropdown menu showing 'ATI Technologies Inc. mach64 CT PCI' and a 'Close' button.

{/webgallery}