

ATi Mach64 VT

Written by Zaatharen

Wednesday, 23 November 2011 15:35 - Last Updated Wednesday, 23 November 2011 15:47



Core: ATi-264VT 60MHz

Memory: 1/2MB EDO 60MHz **Year:** 1996 **Bus:** PCI

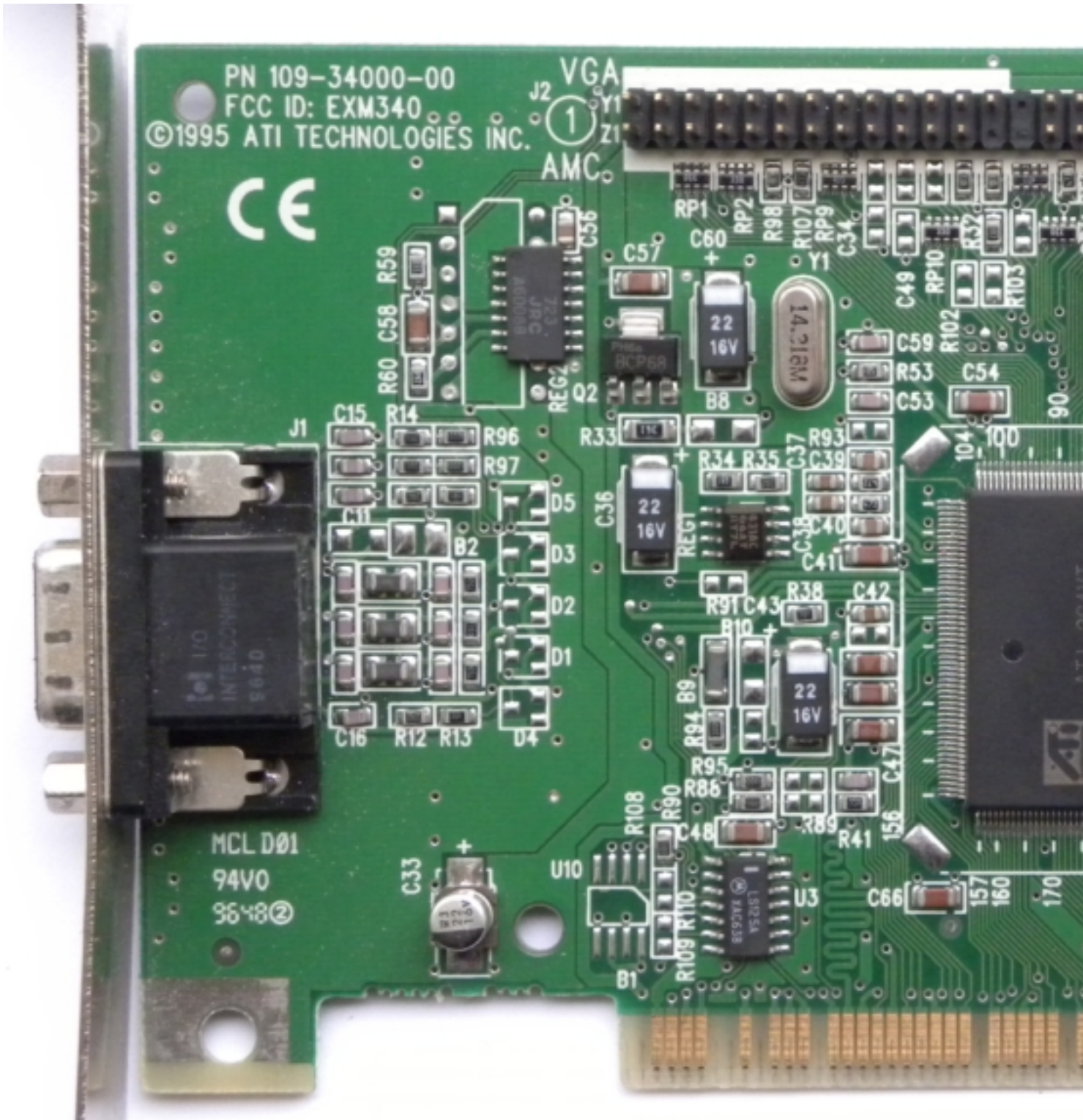
Note: If you were wondering what for is that long connector on almost all ATi Mach/Rage cards, now you know it's for external ISA TV tuner. Tuner itself is powered by ISA bus and all data are coming thru ATi card via PCI/AGP 2x bus.

{webgallery}

ATI Mach64 VT

Written by Zaatharen

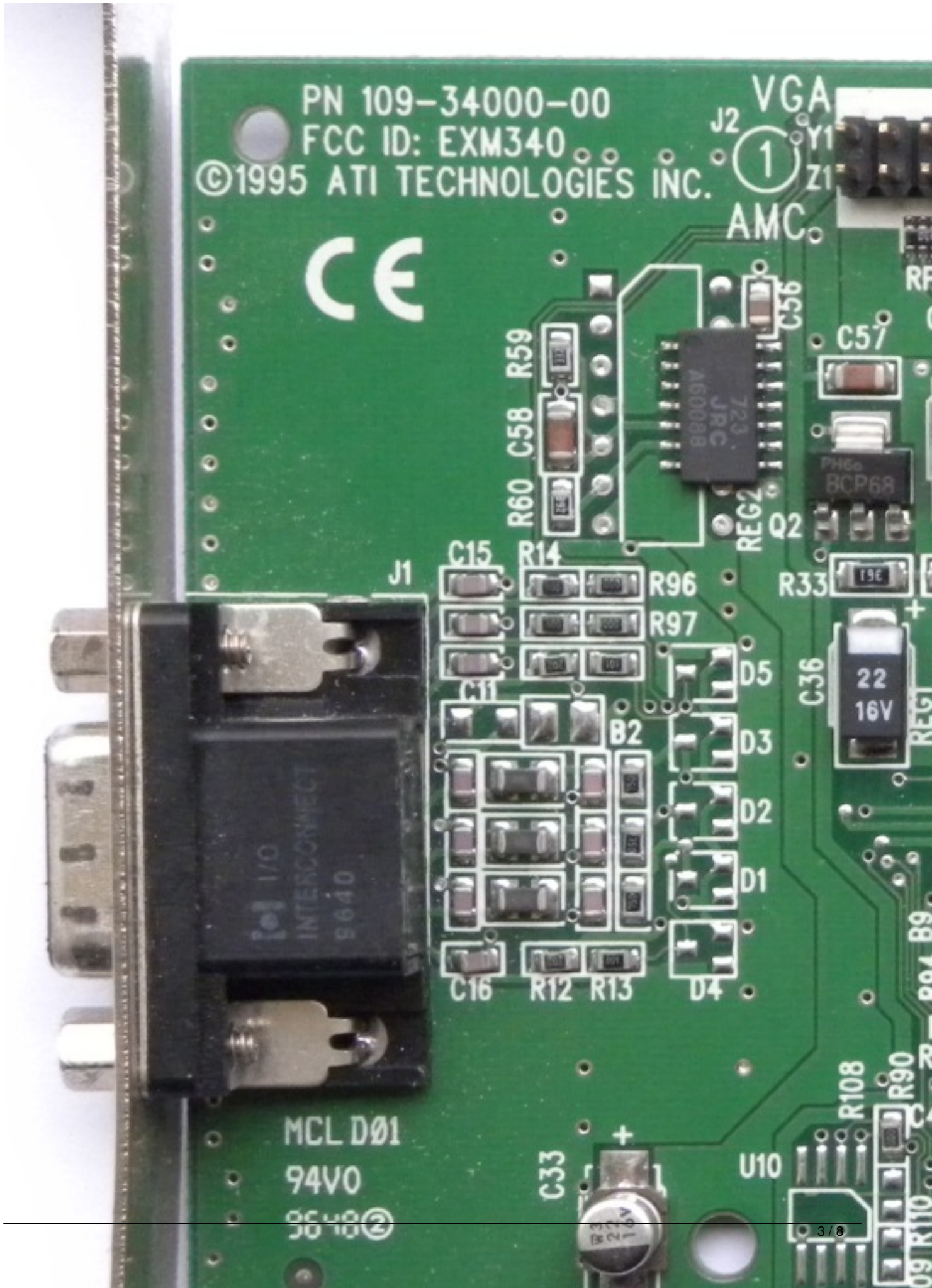
Wednesday, 23 November 2011 15:35 - Last Updated Wednesday, 23 November 2011 15:47



ATi Mach64 VT

Written by Zaatharen

Wednesday, 23 November 2011 15:35 - Last Updated Wednesday, 23 November 2011 15:47



ATi Mach64 VT

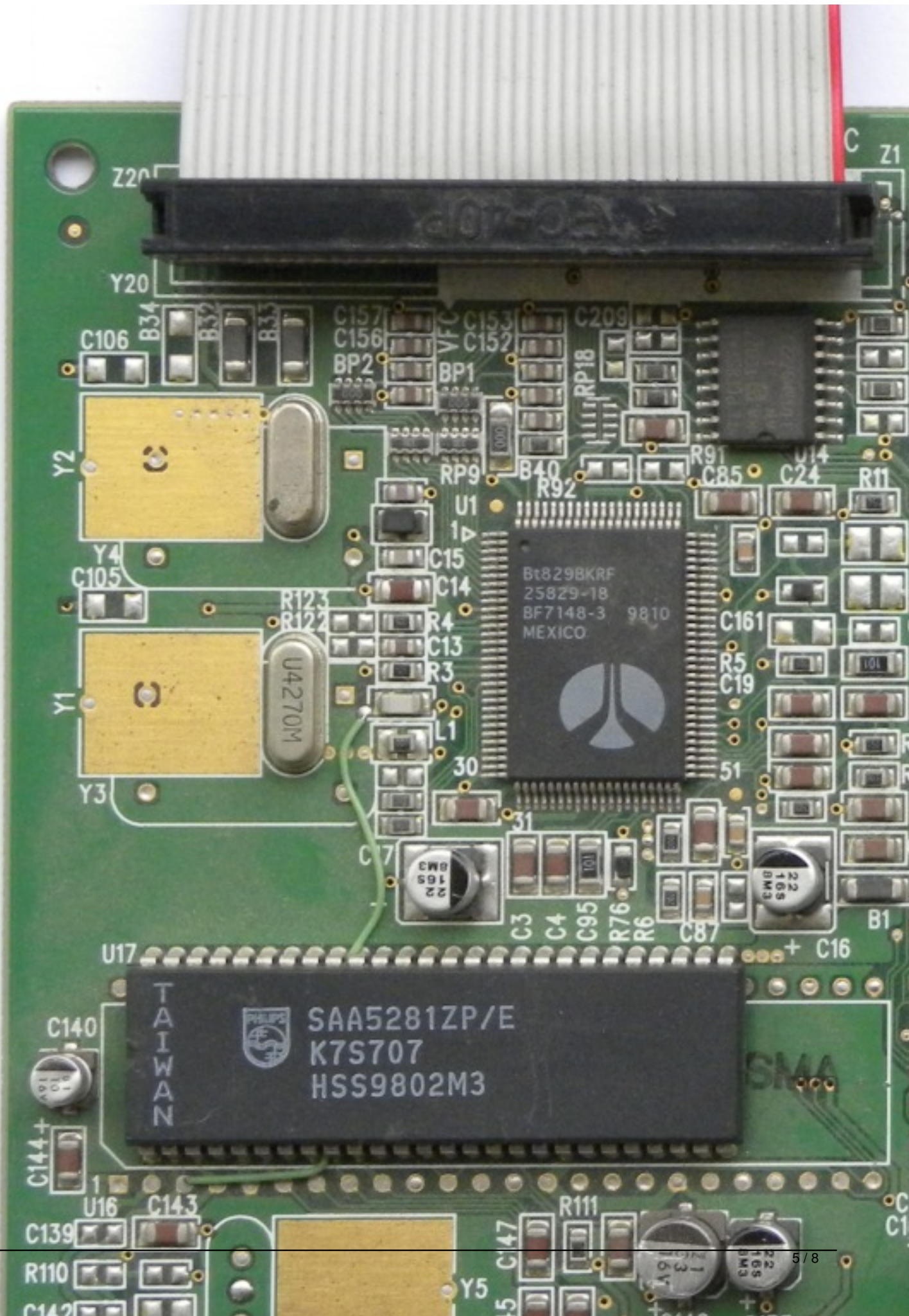
Written by Zaatharen

Wednesday, 23 November 2011 15:35 - Last Updated Wednesday, 23 November 2011 15:47

ATi Mach64 VT

Written by Zaatharen

Wednesday, 23 November 2011 15:35 - Last Updated Wednesday, 23 November 2011 15:47



ATi Mach64 VT

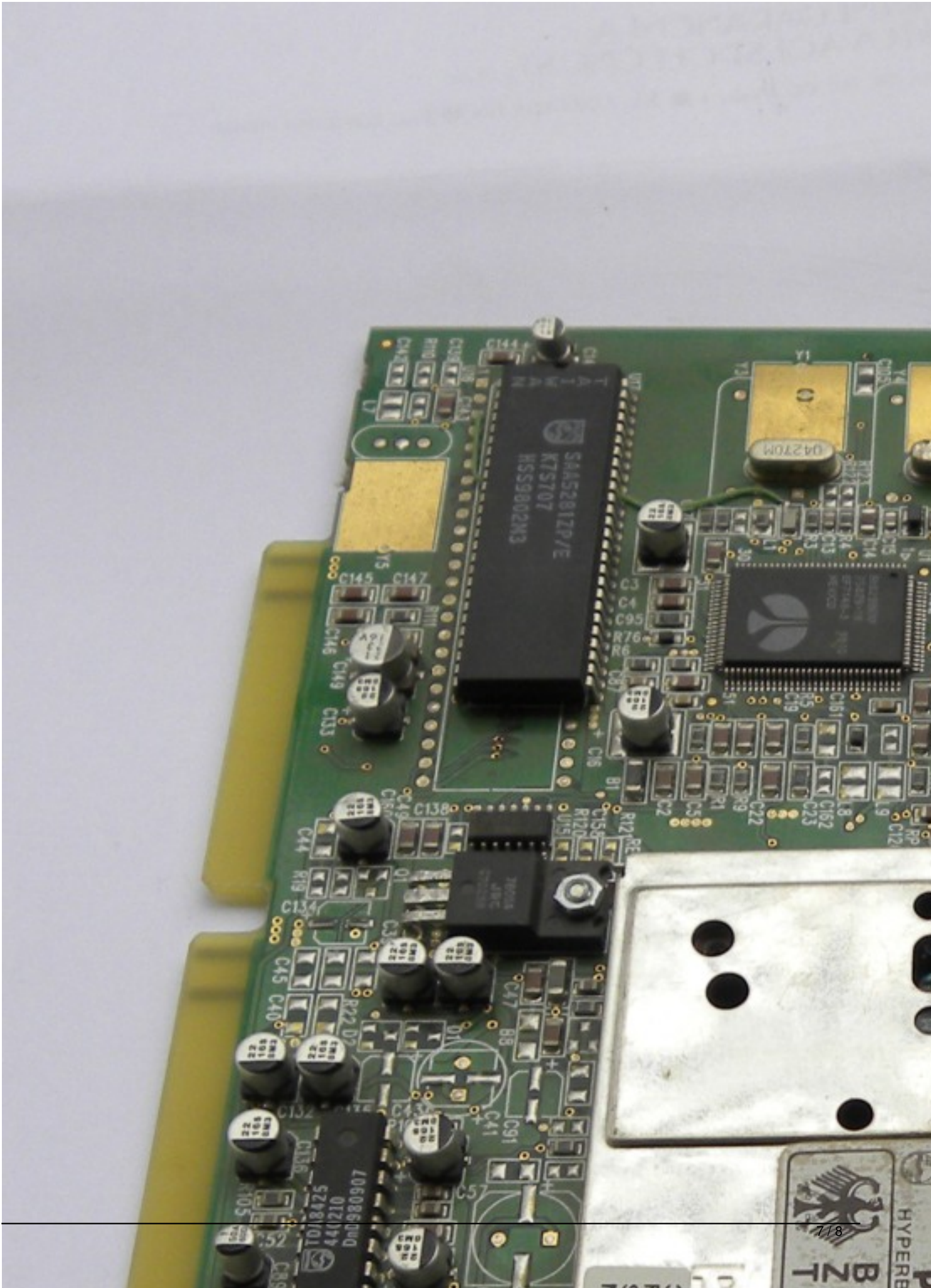
Written by Zaatharen

Wednesday, 23 November 2011 15:35 - Last Updated Wednesday, 23 November 2011 15:47

ATi Mach64 VT

Written by Zaatharen

Wednesday, 23 November 2011 15:35 - Last Updated Wednesday, 23 November 2011 15:47



ATi Mach64 VT

Written by Zaatharen

Wednesday, 23 November 2011 15:35 - Last Updated Wednesday, 23 November 2011 15:47

{/webgallery}