

Cirrus Logic CL-GD5430 PCI

Written by Zaatharen

Monday, 19 April 2010 15:03 - Last Updated Sunday, 13 June 2010 16:20



Core: CL-GD5430 78MHz 32bit

Memory: 1MB (2MB max) FPM 60MHz 32bit

Year: 1994 **Bus:** PCI

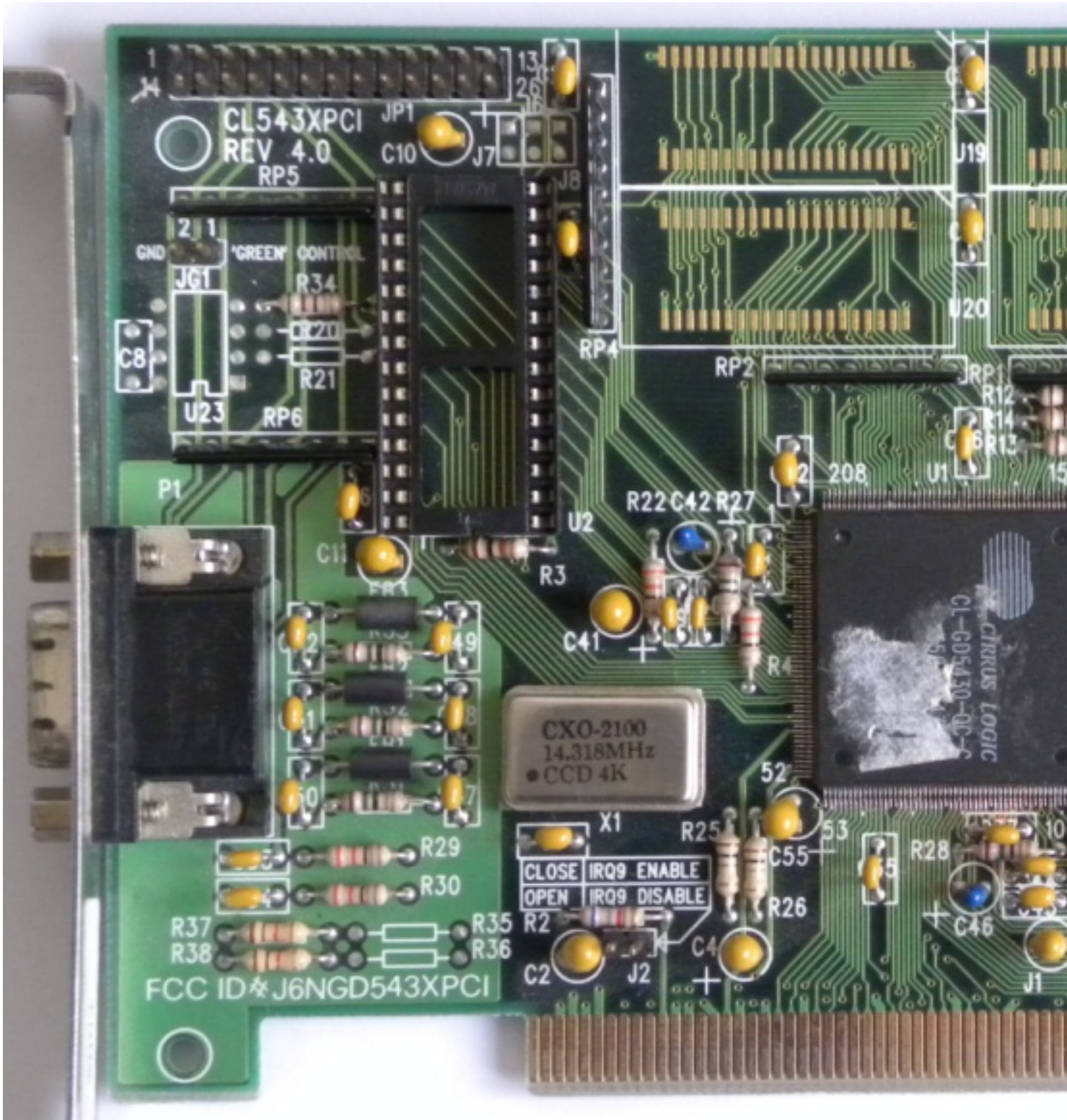
Made: Korea **Links:** [Pdf](#)

{webgallery}

Cirrus Logic CL-GD5430 PCI

Written by Zaatharen

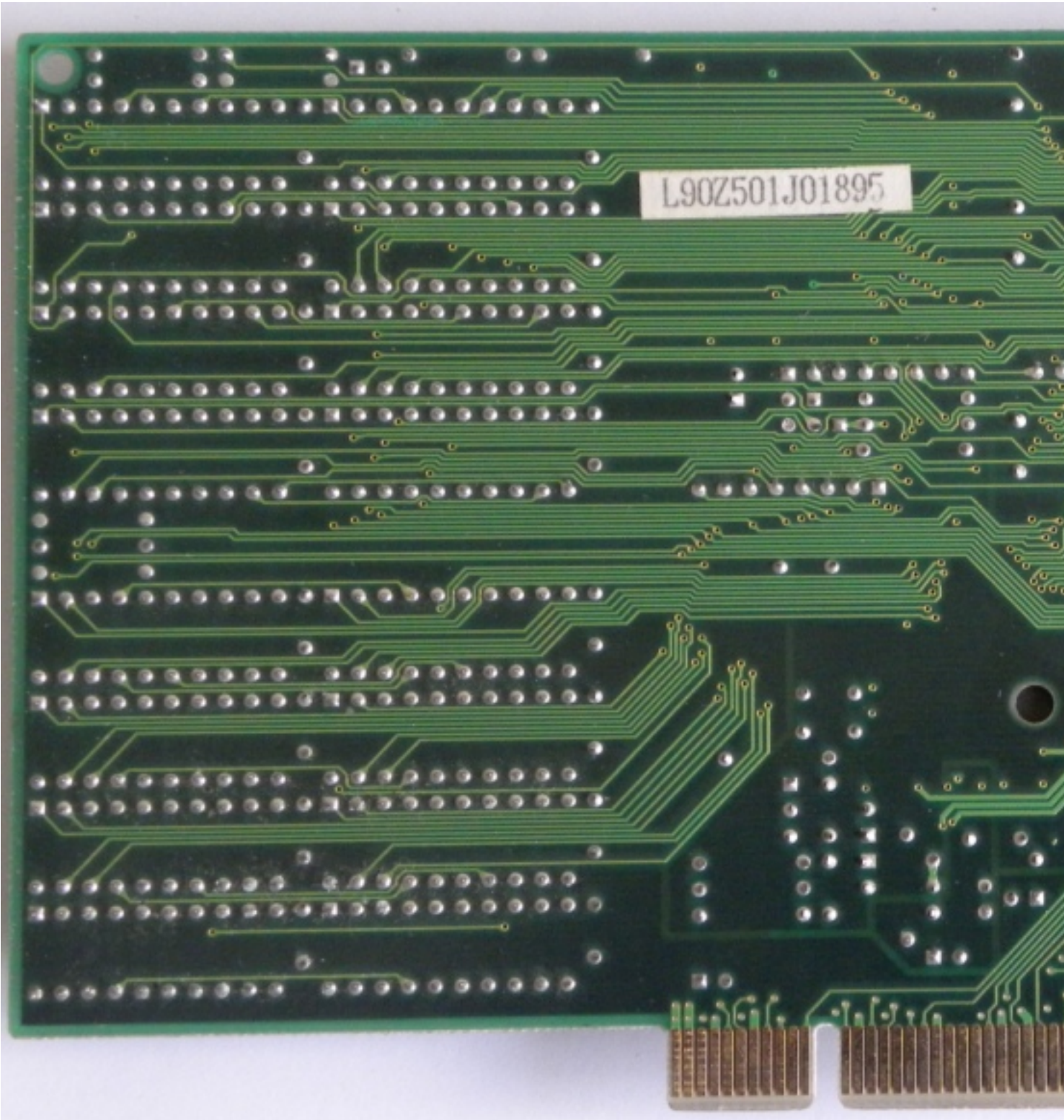
Monday, 19 April 2010 15:03 - Last Updated Sunday, 13 June 2010 16:20



Cirrus Logic CL-GD5430 PCI

Written by Zaatharen

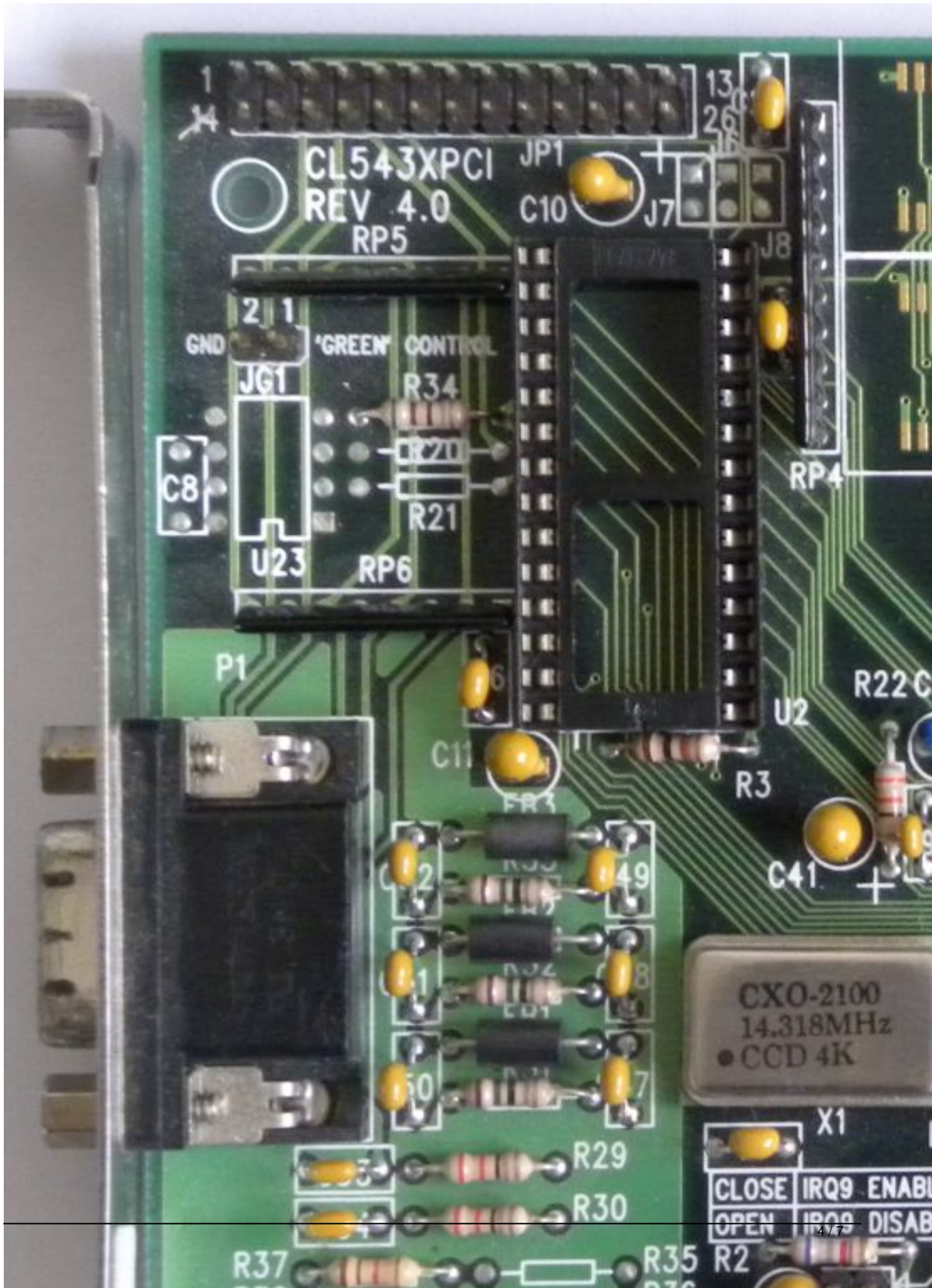
Monday, 19 April 2010 15:03 - Last Updated Sunday, 13 June 2010 16:20



Cirrus Logic CL-GD5430 PCI

Written by Zaatharen

Monday, 19 April 2010 15:03 - Last Updated Sunday, 13 June 2010 16:20



Cirrus Logic CL-GD5430 PCI

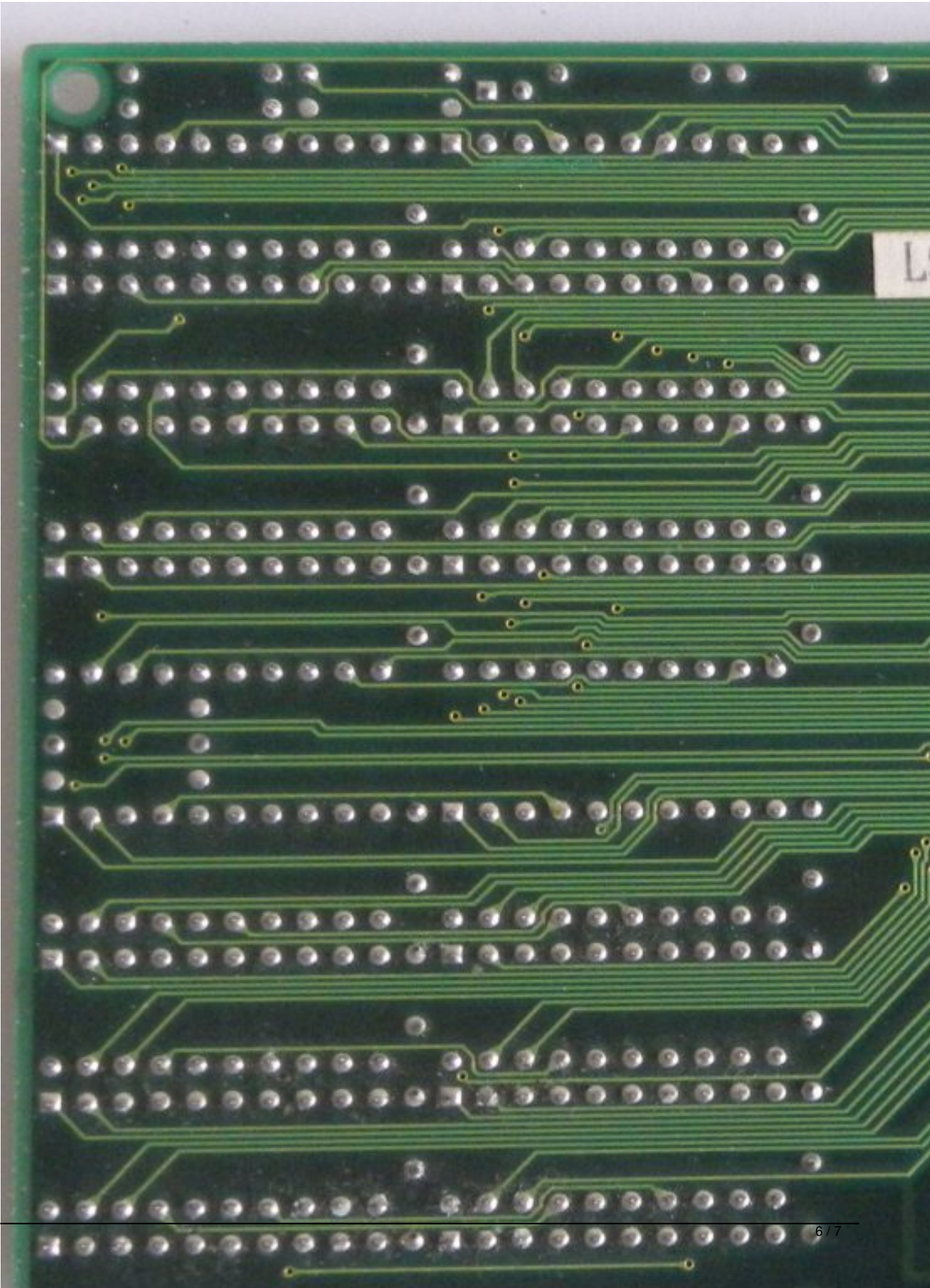
Written by Zaatharen

Monday, 19 April 2010 15:03 - Last Updated Sunday, 13 June 2010 16:20

Cirrus Logic CL-GD5430 PCI

Written by Zaatharen

Monday, 19 April 2010 15:03 - Last Updated Sunday, 13 June 2010 16:20



Cirrus Logic CL-GD5430 PCI

Written by Zaatharen

Monday, 19 April 2010 15:03 - Last Updated Sunday, 13 June 2010 16:20

{/webgallery}